

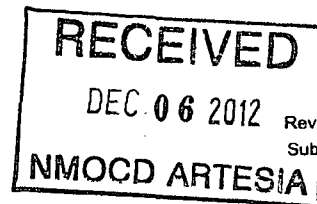
DISTRICT I
1625 N. FRENCH DR., HOBBS, NM 88240

DISTRICT II
1301 W. GRAND AVENUE, ARTESIA, NM 88210

DISTRICT III
1000 RIO BRAZOS RD., AZTEC, NM 87410

DISTRICT IV
11885 S. ST. FRANCIS DR., SANTA FE, NM 87505

State of New Mexico
Energy, Minerals & Natural Resources Department
OIL CONSERVATION DIVISION
1220 South St. Francis Dr.
Santa Fe, New Mexico 87505



Form C-102
Revised July 16, 2010
Submit to Appropriate
District Office

☐ AMENDED REPORT

WELL LOCATION AND ACREAGE DEDICATION PLAT

As Drilled

| | | |
|----------------------------|--|---------------------------------------|
| API Number 30-015-39947 | Pool Code 96718 | Pool Name Loco Hills;Glorieta-Yeso |
| Property Code 302499 | Property Name GISSLER FEDERAL | Well Number 5H |
| OGRID No. 299137 | Operator Name COG OPERATING, LLC | Elevation 3686' |

Surface Location

| UL or lot No. | Section | Township | Range | Lot Idn | Feet from the | North/South line | Feet from the | East/West line | County |
|---------------|---------|----------|-------|---------|---------------|------------------|---------------|----------------|--------|
| M | 5 | 17-S | 30-E | | 330 | SOUTH | 330 | WEST | EDDY |

Bottom Hole Location If Different From Surface

| UL or lot No. | Section | Township | Range | Lot Idn | Feet from the | North/South line | Feet from the | East/West line | County |
|------------------------|-----------------|--------------------|-----------|---------|---------------|------------------|---------------|----------------|--------|
| P | 5 | 17-S | 30-E | | 395 | SOUTH | 340 | EAST | EDDY |
| Dedicated Acres 160 | Joint or Infill | Consolidation Code | Order No. | | | | | | |

NO ALLOWABLE WILL BE ASSIGNED TO THIS COMPLETION UNTIL ALL INTERESTS HAVE BEEN CONSOLIDATED OR A NON-STANDARD UNIT HAS BEEN APPROVED BY THE DIVISION

| | | | |
|--|--------------------|--------------------|--------------------|
| LOT 4 39.41 AC. | LOT 3 39.43 AC. | LOT 2 39.45 AC. | LOT 1 39.47 AC. |
| <p>SECTION, QUARTER & SIXTEENTH CORNER COORDINATES</p> <p>(A) - Y=676676.3, X=601664.6 (B) - Y=675356.2, X=601669.3 (C) - Y=675364.4, X=604310.1 (D) - Y=676692.5, X=606946.0 (E) - Y=675372.5, X=606950.0</p> | | | |
| <p>GEODETIC COORDINATES NAD 27 NME</p> <p>SURFACE LOCATION Y=675687.1 N X=607997.9 E LAT.=32.857107° N LONG.=104.001176° W</p> <p>BOTTOM HOLE LOCATION Y=675701.4 N X=606619.1 E</p> | | <p>DETAIL</p> | |
| <p>GRID AZ. -89°49'18"</p> <p>HORZ. DIST. -4622.3'</p> <p>330' S.L. 330'</p> <p>340' B.H. 395'</p> | | | |

OPERATOR CERTIFICATION

I hereby certify that the information herein is true and complete to the best of my knowledge and belief, and that this organization either owns a working interest or unleased mineral interest in the land including the proposed bottom hole location or has a right to drill this well at this location pursuant to a contract with an owner of such mineral or working interest, or to a voluntary pooling agreement or a compulsory pooling order heretofore entered by the division.

Brian Maiorino 11/30/12
Signature Date

Brian Maiorino
Printed Name

bmaiorino@concho.com
E-mail Address

SURVEYOR CERTIFICATION

I hereby certify that the well location shown on this plat was plotted from field notes of actual surveys made by me or under my supervision, and that the same is true and correct to the best of my belief.

JULY 12, 2011

Date of Survey

Signature & Seal of Professional Surveyor:

Ronald J. Eidson 7/25/2011
Certificate Number Gary G. Eidson 12641
Ronald J. Eidson 3233

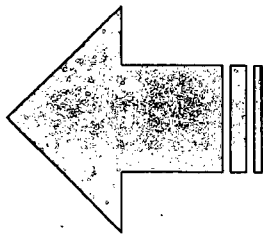
LA REV: 7/25/11 JWSC W.O.: 11.11.1494



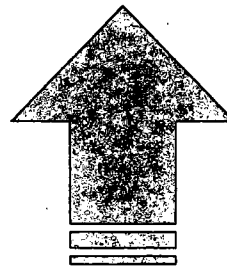
This is a Patch T type separator sheet.



Form Type = "Well file form"
CODE128 type barcode



Landscape Feed
New Form Follows...



Portrait Feed
New Form Follows...

This is a Patch T type separator sheet.

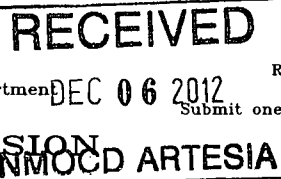


Form Type = "Well file form"
CODE128 type barcode

DISTRICT I
1625 N. French Dr., Hobbs, NM 88240
DISTRICT II
1301 W. Grand Avenue, Artesia, NM 88210
DISTRICT III
1000 Rio Brazos Rd., Aztec, NM 87410
DISTRICT IV
1220 S. St. Francis Dr., Santa Fe, NM 87505

State of New Mexico
Energy, Minerals and Natural Resources Department

OIL CONSERVATION DIVISION
1220 South St. Francis Dr.
Santa Fe, New Mexico 87505



Form C-102
Revised July 16, 2010
Submit one copy to appropriate District Office

WELL LOCATION AND ACREAGE DEDICATION PLAT

☐ AMENDED REPORT
as Drilled

| | | |
|----------------------------|-----------------------------------|--------------------------------------|
| API Number 30-015-39972 | Pool Code 50443 | Pool Name Quahada Ridge, SE (Del) |
| Property Code 306407 | Property Name JAMES RANCH UNIT | Well Number 141H |
| OGRID No. 260737 | Operator Name BOPCO, L.P. | Elevation 3346' |

Surface Location

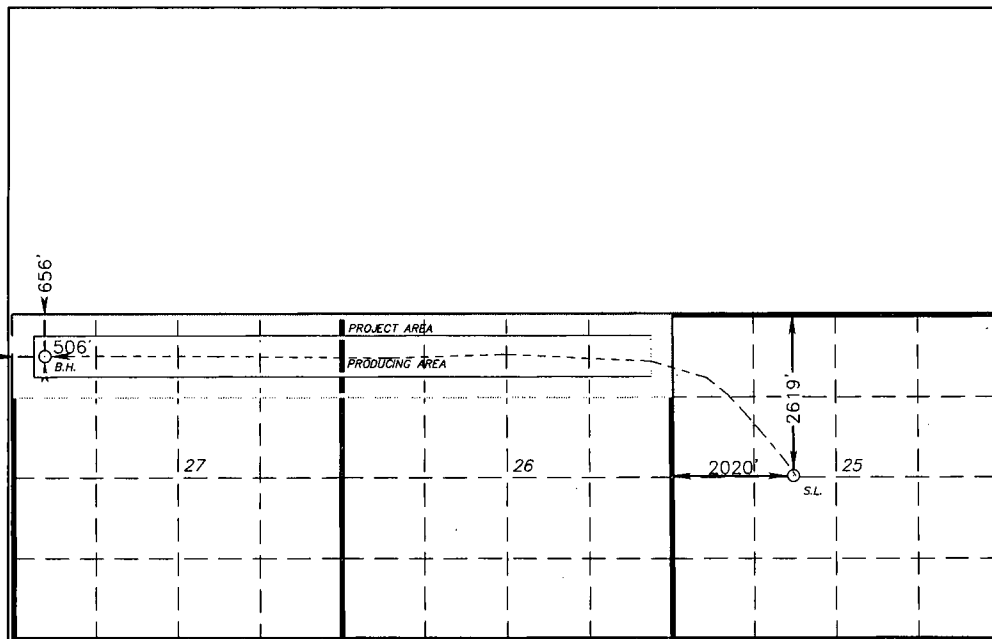
| UL or lot No. | Section | Township | Range | Lot Idn | Feet from the | North/South line | Feet from the | East/West line | County |
|---------------|---------|----------|-------|---------|---------------|------------------|---------------|----------------|--------|
| F | 25 | 22 S | 30 E | | 2619 | NORTH | 2020 | WEST | EDDY |

Bottom Hole Location If Different From Surface

| UL or lot No. | Section | Township | Range | Lot Idn | Feet from the | North/South line | Feet from the | East/West line | County |
|---------------|---------|----------|-------|---------|---------------|------------------|---------------|----------------|--------|
| D | 27 | 22 S | 30 E | | 656 | NORTH | 506 | WEST | EDDY |

| | | | |
|------------------------|-----------------|--------------------|-----------|
| Dedicated Acres 320 | Joint or Infill | Consolidation Code | Order No. |
|------------------------|-----------------|--------------------|-----------|

NO ALLOWABLE WILL BE ASSIGNED TO THIS COMPLETION UNTIL ALL INTERESTS HAVE BEEN CONSOLIDATED
OR A NON-STANDARD UNIT HAS BEEN APPROVED BY THE DIVISION



BOTTOM HOLE LOCATION
Lat - N 32°22'06.72"
Long - W 103°52'31.65"
NMSPCE- N 498090.06
E 641369.07
(NAD-27)

SURFACE LOCATION
DELAWARE PP
Lat - N 32°21'47.01"
Long - W 103°50'09.20"
NMSPCE- N 496152.977
E 653594.881
(NAD-27)

SCALE 1"=3000'

OPERATOR CERTIFICATION

I hereby certify that the information contained herein is true and complete to the best of my knowledge and belief, and that this organization either owns a working interest or unleased mineral interest in the land including the proposed bottom hole location or has a right to drill this well at this location pursuant to a contract with an owner of such a mineral or working interest, or to a voluntary pooling agreement or a compulsory pooling order heretofore entered by the division.

Charles Warner 10-23-12
Signature Date
Charles Warner
Printed Name
ckwarner@kasspet.com
Email Address

SURVEYOR CERTIFICATION

I hereby certify that the well location shown on this plat was plotted from field notes of actual surveys made by me or under my supervision, and that the same is true and correct to the best of my belief.

| | |
|---|--------------------|
| Date Surveyed | GARY L. JONES |
| Signature & Seal of Professional Surveyor | |
| Certificate No. | Gary L. Jones 7977 |
| BASIN SURVEYS | 25990 |