

District I
1625 N. French Dr., Hobbs, NM 88240
District II
1301 W. Grand Avenue, Artesia, NM 88210
District III
1000 Rio Brazos Road, Aztec, NM 87410
District IV
1220 S. St. Francis Dr., Santa Fe, NM 87505

State of New Mexico
Energy Minerals and Natural Resources

Form C-101
May 27, 2004

Oil Conservation Division
1220 South St. Francis Dr.
Santa Fe, NM 87505

Submit to appropriate District Office

☐ AMENDED REPORT

SEP 20 2005

OCD-ARTESIA

APPLICATION FOR PERMIT TO DRILL, RE-ENTER, DEEPEN, PLUGBACK, OR ADD A ZONE

Operator Name and Address MARBOB ENERGY CORPORATION PO BOX 227, ARTESIA, NM 88211-0227				OGRID Number 14049					
Property Code 34326				Property Name DIME STATE					
Well No. 1				API Number 30-015-33659					
Proposed Pool 1 Wildcat; ATOKA				Proposed Pool 2 Wildcat; STRAWN					
PROPOSED POOL 3: CANYON				PROPOSED POOL 4: WOLFCAMP					
UL or lot no. J	Section 30	Township 18S	Range 28E	Lot Idn	Feet from the 1980	North/South line SOUTH	Feet from the 1580	East/West line EAST	County EDDY

Proposed Bottom Hole Location If Different From Surface

UL or lot no.	Section	Township	Range	Lot Idn	Feet from the	North/South line	Feet from the	East/West line	County
---------------	---------	----------	-------	---------	---------------	------------------	---------------	----------------	--------

Additional Well Information

Work Type Code P	Well Type Code G	Cable/Rotary R	Lease Type Code S	Ground Level Elevation 3561' GL
Multiple N	Proposed Depth 10780'	Formation MORROW	Contractor	Spud Date 11/9/04
Depth to Groundwater		Distance from nearest fresh water well		Distance from nearest surface water
Pit: Liner: Synthetic <input type="checkbox"/> _____mils thick Clay <input type="checkbox"/> Pit Volume: _____bbls Drilling Method: _____				
Closed-Loop System <input type="checkbox"/> Fresh Water <input type="checkbox"/> Brine <input type="checkbox"/> Diesel/Oil-based <input type="checkbox"/> Gas/Air <input type="checkbox"/>				

EXISTING

Proposed Casing and Cement Program

Hole Size	Casing Size	Casing weight/foot	Setting Depth	Sacks of Cement	Estimated TOC
17 1/2"	13 3/8"	54.5#	432'	425 SX	
12 1/4"	9 5/8"	36#	2235'	800 SX	
8 3/4"	5 1/2"	17#	10757'	1750 SX	

Describe the proposed program. If this application is to DEEPEN or PLUG BACK, give the data on the present productive zone and proposed new productive zone. Describe the blowout prevention program, if any. Use additional sheets if necessary.

SET 10K COMPOSITE FRAC PLUG @ 10175'. PERF THE ATOKA @ 9937'-10129' (15 SHOTS). ACDZ W/ 2500 GAL NEFE 15% HCL. SWAB/FLOW TEST. PLUG BACK TECHNIQUE WILL BE DETERMINED BASED ON RESULTS OF PREVIOUS ZONES. PERF THE STRAWN @ 9529'-9750' (44 SHOTS). ACDZ @ 9734'-9750' W/ 1500 GAL NEFE 15% HCL. SWAB/FLOW TEST. ACDZ @ 9529'-9545' W/ 1000 GAL NEFE 7 1/2% HCL. SWAB/FLOW TEST. IF DECISION MADE TO FRAC, SET PLUG @ 9570' & FRAC DOWN CSG W/ 25K# 18/40 VERSAPROP. PLUG BACK TECHNIQUE WILL BE DETERMINED BASED ON RESULTS OF PREVIOUS ZONES. PERF THE CANYON @ 8965'-9104' (18 SHOTS). ACDZ W/ 3000 GAL NEFE 15% HCL. SWAB/FLOW TEST. PLUG BACK TECHNIQUE WILL BE DETERMINED BASED ON RESULTS OF PREVIOUS ZONES. PERF THE WOLFCAMP @ 8289'-8488' (18 SHOTS). ACDZ W/ 3000 GAL NEFE 15% HCL. SWAB/FLOW TEST. PLUG BACK TECHNIQUE WILL BE DETERMINED BASED ON RESULTS OF PREVIOUS ZONES. PERF THE WOLFCAMP @ 7910'-7916' (14 SHOTS). SWAB/FLOW TEST. ACDZ W/ 1000 GAL NEFE 20% HCL. SWAB/FLOW TEST.

I hereby certify that the information given above is true and complete to the best of my knowledge and belief. I further certify that the drilling pit will be constructed according to NMOC guidelines ☐ a general permit ☐ or an (attached) alternative OCD-approved plan ☐.

OIL CONSERVATION DIVISION

Approved by:

[Signature]
District II Supervisor

Printed name: DIANA J. BRIGGS

Title:

Title: PRODUCTION ANALYST

Approval Date: OCT 02 2005

Expiration Date:

OCT 02 2006

E-mail Address: PRODUC

If an earthen pit(s) will be utilized in association with this work, a permit must be obtained prior to pit construction.

Date: 9/19/05

Conditions of Approval Attached ☐

On PB operator to sent BP ~ 135' cement 100' above last perfs.

RECEIVED

SEP 20 2005

DISTRICT I

1625 N. FRENCH DR., HOBBS, NM 88240

State of New Mexico

Energy, Minerals and Natural Resources Department

CCU-ARTESIA

Form C-102

Revised JUNE 10, 2003

DISTRICT II

1301 W. GRAND AVENUE, ARTESIA, NM 88210

OIL CONSERVATION DIVISION

Submit to Appropriate District Office

1220 SOUTH ST. FRANCIS DR.

State Lease - 4 Copies

Santa Fe, New Mexico 87505

Fee Lease - 3 Copies

DISTRICT III

1000 Rio Brazos Rd., Aztec, NM 87410

DISTRICT IV

1220 S. ST. FRANCIS DR., SANTA FE, NM 87505

WELL LOCATION AND ACREAGE DEDICATION PLAT

☐ AMENDED REPORT

API Number 30-015-33659	Pool Code 96086	Pool Name Wildcat; WOLFCAMP
Property Code 34326	Property Name DIME STATE	Well Number 1
OGRID No. 14049	Operator Name MARBOB ENERGY CORPORATION	Elevation 3561'

Surface Location

UL or lot No.	Section	Township	Range	Lot Idn	Feet from the	North/South line	Feet from the	East/West line	County
J	30	18-S	28-E		1980'	SOUTH	1580'	EAST	EDDY

Bottom Hole Location If Different From Surface

UL or lot No.	Section	Township	Range	Lot Idn	Feet from the	North/South line	Feet from the	East/West line	County
Dedicated Acres 326.48	Joint or Infill	Consolidation Code	Order No.						

NO ALLOWABLE WILL BE ASSIGNED TO THIS COMPLETION UNTIL ALL INTERESTS HAVE BEEN CONSOLIDATED
OR A NON-STANDARD UNIT HAS BEEN APPROVED BY THE DIVISION

<p>LOT 1</p> <p>LOT 2</p> <p>LOT 3</p> <p>LOT 4</p> <p>GEODETC COORDINATES NAD 27 NME</p> <p>Y=624351.5 N X=537686.9 E</p> <p>LAT.=32°42'58.97" N LONG.=104°12'38.87" W</p> <p>1580'</p> <p>1980'</p>	<p>OPERATOR CERTIFICATION</p> <p>I hereby certify the the information contained herein is true and complete to the best of my knowledge and belief.</p> <p><i>[Signature]</i> Signature DIANA J. BRIGGS Printed Name PRODUCTION ANALYST Title SEPTEMBER 19, 2005 Date</p>
	<p>SURVEYOR CERTIFICATION</p> <p>I hereby certify that the well location shown on this plat was plotted from field notes of actual surveys made by me or under my supervision, and that the same is true and correct to the best of my belief.</p> <p>AUGUST 31, 2004 Date Surveyed LA</p>
	<p>Signature & Seal of Professional Surveyor</p> <p><i>[Signature]</i> 04.11.1110 Certificate No. GARY RIDSON 12841</p>

RECEIVED

SEP 20 2005

OCCUPANCY

DISTRICT I

1625 N. FRENCH DR., HOBBS, NM 88240

DISTRICT II

1301 W. GRAND AVENUE, ARTESIA, NM 88210

DISTRICT III

1000 Rio Brazos Rd., Aztec, NM 87410

DISTRICT IV

1220 S. ST. FRANCIS DR., SANTA FE, NM 87505

State of New Mexico

Energy, Minerals and Natural Resources Department

OIL CONSERVATION DIVISION

1220 SOUTH ST. FRANCIS DR.

Santa Fe, New Mexico 87505

Form C-102

Revised JUNE 10, 2003

Submit to Appropriate District Office

State Lease - 4 Copies

Fee Lease - 3 Copies

WELL LOCATION AND ACREAGE DEDICATION PLAT

☐ AMENDED REPORT

API Number 30-015-33659	Pool Code 96081	Pool Name Wjldcat
Property Code 34326	Property Name DIME STATE	Well Number 1
OGRID No. 14049	Operator Name MARBOB ENERGY CORPORATION	Elevation 3561'

Surface Location

UL or lot No.	Section	Township	Range	Lot Idn	Feet from the	North/South line	Feet from the	East/West line	County
J	30	18-S	28-E		1980'	SOUTH	1580'	EAST	EDDY

Bottom Hole Location If Different From Surface

UL or lot No.	Section	Township	Range	Lot Idn	Feet from the	North/South line	Feet from the	East/West line	County
Dedicated Acres 326.48	Joint or Infill	Consolidation Code	Order No.						

NO ALLOWABLE WILL BE ASSIGNED TO THIS COMPLETION UNTIL ALL INTERESTS HAVE BEEN CONSOLIDATED
OR A NON-STANDARD UNIT HAS BEEN APPROVED BY THE DIVISION

<p>LOT 1</p> <p>LOT 2</p> <p>LOT 3</p> <p>LOT 4</p> <p>GEODETIC COORDINATES NAD 27 NME</p> <p>Y=624351.5 N X=537686.9 E</p> <p>LAT.=32°42'58.97" N LONG.=104°12'38.87" W</p> <p>1580'</p> <p>1980'</p>	<p>OPERATOR CERTIFICATION</p> <p>I hereby certify the the information contained herein is true and complete to the best of my knowledge and belief.</p> <p><i>Diana J. Briggs</i></p> <p>Signature</p> <p>DIANA J. BRIGGS</p> <p>Printed Name</p> <p>PRODUCTION ANALYST</p> <p>Title</p> <p>SEPTEMBER 19, 2005</p> <p>Date</p>	
	<p>SURVEYOR CERTIFICATION</p> <p>I hereby certify that the well location shown on this plat was plotted from field notes of actual surveys made by me or under my supervision, and that the same is true and correct to the best of my belief.</p> <p>AUGUST 31, 2004</p> <p>Date Surveyed</p> <p>Signature & Seal of Professional Surveyor</p> <p><i>Gary E. Edson</i> 9/3/04</p> <p>04.11.1110</p> <p>Certificate No. GARY EDSON 12841</p>	

RECEIVED

State of New Mexico

SEP 20 2005

DISTRICT I

1625 N. FRENCH DR., HOBBS, NM 88240

Energy, Minerals and Natural Resources Department

OCCUPANCY

Form C-102

Revised JUNE 10, 2003

Submit to Appropriate District Office

State Lease - 4 Copies

Fee Lease - 3 Copies

DISTRICT II

1301 W. GRAND AVENUE, ARTESIA, NM 88210

OIL CONSERVATION DIVISION

1220 SOUTH ST. FRANCIS DR.

Santa Fe, New Mexico 87505

DISTRICT III

1000 Rio Brazos Rd., Aztec, NM 87410

DISTRICT IV

1220 S. ST. FRANCIS DR., SANTA FE, NM 87505

WELL LOCATION AND ACREAGE DEDICATION PLAT

☐ AMENDED REPORT

API Number 30-015-33659	Pool Code 96072	Pool Name WILDCAT CANYON
Property Code 34326	Property Name DIME STATE	Well Number 1
OGRID No. 14049	Operator Name MARBOB ENERGY CORPORATION	Elevation 3561'

Surface Location

UL or lot No.	Section	Township	Range	Lot Idn	Feet from the	North/South line	Feet from the	East/West line	County
J	30	18-S	28-E		1980'	SOUTH	1580'	EAST	EDDY

Bottom Hole Location If Different From Surface

UL or lot No.	Section	Township	Range	Lot Idn	Feet from the	North/South line	Feet from the	East/West line	County
Dedicated Acres 326.48	Joint or Infill	Consolidation Code	Order No.						

NO ALLOWABLE WILL BE ASSIGNED TO THIS COMPLETION UNTIL ALL INTERESTS HAVE BEEN CONSOLIDATED
OR A NON-STANDARD UNIT HAS BEEN APPROVED BY THE DIVISION

	OPERATOR CERTIFICATION I hereby certify the the information contained herein is true and complete to the best of my knowledge and belief. <i>[Signature]</i> Signature DIANA J. BRIGGS Printed Name PRODUCTION ANALYST Title SEPTEMBER 19, 2005 Date	
	SURVEYOR CERTIFICATION I hereby certify that the well location shown on this plat was plotted from field notes of actual surveys made by me or under my supervision, and that the same is true and correct to the best of my belief. AUGUST 31, 2004 Date Surveyed Signature & Seal of Professional Surveyor <i>[Signature]</i> 9/3/04 04.11.1110 Certificate No. GARY EIDSON 12841	

RECEIVED

SEP 20 2005

DISTRICT I

1625 N. FRENCH DR., HOBBS, NM 88240

DISTRICT II

1301 W. GRAND AVENUE, ARTESIA, NM 88210

DISTRICT III

1000 Rio Brazos Rd., Aztec, NM 87410

DISTRICT IV

1220 S. ST. FRANCIS DR., SANTA FE, NM 87505

State of New Mexico

Energy, Minerals and Natural Resources Department

OCC-ARTESIA

Form C-102

Revised JUNE 10, 2003

Submit to Appropriate District Office

State Lease - 4 Copies

Fee Lease - 3 Copies

OIL CONSERVATION DIVISION

1220 SOUTH ST. FRANCIS DR.

Santa Fe, New Mexico 87505

WELL LOCATION AND ACREAGE DEDICATION PLAT

☐ AMENDED REPORT

API Number 30-015-33659	Pool Code 96049	Pool Name WILDCAT	ATOKA
Property Code 34326	Property Name DIME STATE		Well Number 1
OGRID No. 14049	Operator Name MARBOB ENERGY CORPORATION		Elevation 3561'

Surface Location

UL or lot No.	Section	Township	Range	Lot Idn	Feet from the	North/South line	Feet from the	East/West line	County
J	30	18-S	28-E		1980'	SOUTH	1580'	EAST	EDDY

Bottom Hole Location If Different From Surface

UL or lot No.	Section	Township	Range	Lot Idn	Feet from the	North/South line	Feet from the	East/West line	County
Dedicated Acres	Joint or Infill	Consolidation Code	Order No.						
326.48									

NO ALLOWABLE WILL BE ASSIGNED TO THIS COMPLETION UNTIL ALL INTERESTS HAVE BEEN CONSOLIDATED
OR A NON-STANDARD UNIT HAS BEEN APPROVED BY THE DIVISION

	OPERATOR CERTIFICATION I hereby certify the the information contained herein is true and complete to the best of my knowledge and belief. Signature DIANA J. BRIGGS Printed Name PRODUCTION ANALYST Title SEPTEMBER 19, 2005 Date
	SURVEYOR CERTIFICATION I hereby certify that the well location shown on this plat was plotted from field notes of actual surveys made by me or under my supervision, and that the same is true and correct to the best of my belief. AUGUST 31, 2004 Date Surveyed LA
	Signature & Seal of Professional Surveyor Certificate No. GARY EDSON 12641

**Dime St 1
J-30-18S-28E
Eddy Co., NM**

**Recompletion Procedure 1
6 Sept 2005**

Basic Data:

13-3/8" @ 432' Circ. Cmt.

9-5/8" @ 2235' Circ. Cmt.

5.5"/17ppf/M95-110/LTC Burst=10640 psi, 8512 psi at 80% Nom. ID=4.892" Drift ID=4.767"

2.375"/4.7ppf/L80/EUE Burst=11200 psi, 8960 psi at 80% Nom ID=1.995" Drift ID=1.901"

Collapse=11780 psi, 9424 at 80%

Tensile=104,300 lb with no safety factor

Objective: Recomplete well to the Atoka, Strawn, Canyon and/or Wolfcamp.

Procedure:

1. When ready to move to next zone, blow well down, pump small slug of 7% KCl water down tubing, NU BOP and TOOH with packer using as little fluid to control well as possible.
2. RU lubricator, run gauge ring to 10200', set 10k composite frac plug (ball on top) at 10175', load casing with KCl water, test casing to 2000 psi and perf the Atoka with 3-3/8" or 4" casing guns loaded 1 spf at any phasing at the depths shown below.

Atoka: 9937', 9941', 9954', 9970', 10006', 10017', 10025', 10027', 10029', 10048', 10057',
10103', 10107', 10109', 10129' (15 shots)

3. RIH with packer assembly to approx. 9900', space out, set packer, test annulus to 500 psi, tree up, swab tubing dry, install tree saver and acidize with 2500 gals. NE Fe 15% HCl acid at 3-5 bpm while limiting treating pressure to 8500 psi and holding 1000 psi on annulus. Drop 45 ballsealers throughout job. Swab/flow test until notified to do otherwise.

-
4. When ready to move to next zone, plugback technique will be determined based on results of previous zone(s). RU lubricator and perf the Strawn with 3-3/8" or 4" casing guns loaded 2 spf at any phasing at the depths shown below.

Strawn: 9529-9534', 9539-9545', 9734', 9736', 9738', 9740', 9742', 9744', 9746', 9748', 9750' (44 shots)

5. RIH with packer/RBP (ball catcher) assembly, straddle 9734-9750', pump acid close to packer, close bypass and acidize with 1500 gals. NE Fe 15% HCl acid at 3-5 bpm while limiting treating pressure to 8000 psi and holding 1000 psi on annulus. Drop 40 ballsealers through job. Swab/flow test until notified to do otherwise.

6. When ready to move up hole, straddle 9529-9545', pump acid close to packer, close bypass and acidize with 1000 gals. NE Fe 7.5% HCl acid at 3-5 bpm while limiting treating pressure to 8000 psi and holding 1000 psi on annulus. Drop 40 ballsealers through job. Swab/flow test until notified to do otherwise.
 7. If decision made to frac, kill well, install 10k frac valve with BOP on top, unseat packer, swab as much fluid out of casing as possible while still allowing for a safe trip OOH, and TOO H with packer and tubing. RU lubricator, run gauge ring to 9600', set CIBP/composite BP/composite frac plug (to be determined) at 9570' and reperf 9529-34' and 9539-45' with 3 spf at 120° phasing using 3-3/8" or 4" casing gun.
 8. Install casing saver and frac down casing at 20 bpm with 65Q CO2 foam carrying approx. 25,000 lbs. 18/40 versaprop. Flow back until gas burns. Dump 15 bbls clean 7% KCl water down casing, shut in overnight, set a retrievable packer with pump out plug on wireline, blow casing down, run tubing, circulate packer fluid, tree up, pump out plug, swab well in, clean it up and SIWOPL.
-

9. When ready to move to next zone, plugback technique will be determined based on results of previous zone(s). RU lubricator and perf the Canyon with 3-3/8" or 4" casing guns loaded 1 spf at any phasing at the depths shown below.

Canyon: 8965', 8973', 8980', 8986', 8999', 9011', 9029', 9037', 9058', 9061', 9064',
9071', 9074', 9078', 9087', 9095', 9099', 9104' (18 shots)

10. RIH with packer assembly to approx. 8900', space out, set packer, test annulus to 500 psi, tree up, swab tubing dry, install tree saver and acidize with 3000 gals. NE Fe 15% HCl acid at 3-5 bpm while limiting treating pressure to 8500 psi and holding 1000 psi on annulus. Drop 60 ballsealers throughout job. Swab/flow test until notified to do otherwise.
-

11. When ready to move to next zone, plugback technique will be determined based on results of previous zone(s). RU lubricator and perf the Wolfcamp with 3-3/8" or 4" casing guns loaded 2 spf at any phasing at the depths shown below.

Wolfcamp: 8289', 8290', 8291', 8336', 8337', 8338', 8486', 8487', 8488' (18 shots)

12. RIH with packer assembly, pump acid close to packer, close bypass and acidize with 3000 gals. NE Fe 15% HCl acid at 3-5 bpm while limiting treating pressure to 8000 psi and holding 1000 psi on annulus. Drop 60 ballsealers throughout job. Swab/flow test until notified to do otherwise.
-

13. When ready to move to next zone, plugback technique will be determined based on results of previous zone(s). Spot 500 gals double inhibited NE Fe 20% HCl acid at 7900'. RU lubricator, pressurize the casing to 1500 psi and perf the Wolfcamp Dolomite with 3-3/8" or 4" casing guns loaded 2 spf at any phasing at the depths shown below. If well doesn't go on vacuum, pump the spot acid away at 1/2 to 1 bpm. If well comes in flowing, be prepared to lubricate a packer in on wireline.

Wolfcamp Dolomite: 7910-7916' (14 shots)

14. RIH with packer assembly and swab/flow test until notified to do otherwise.
15. If decision is made to acidize, pump 1000 gals. NE Fe 20% HCl acid at 1-2 bpm while limiting treating pressure to 5000 psi and holding 1000 psi on annulus. No ballsealers will be used. Swab/flow test until notified to do otherwise.

Kbc/dime st 1 atoka

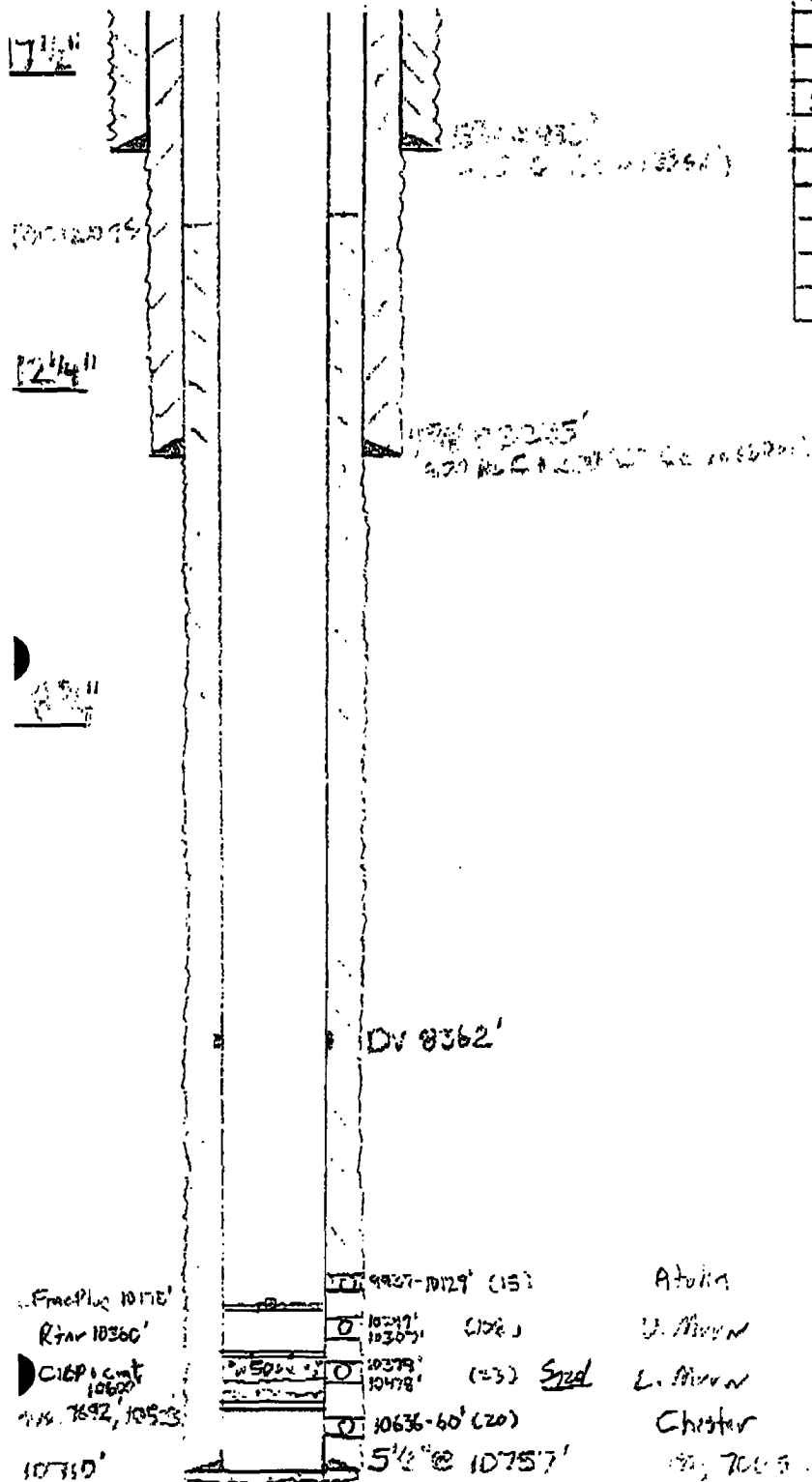
Well: Dime St. 1

Location: 1780' FSL 1580' FSL
J-30-180-282
Edin, NM

Env: 16' AGL
 KB: 3577'
 GL: 3561'

Casing Program:

Size	Wt.	Grade	Conn.	Depth
1 3/4"	54.5	J55	STC	532'
2 1/8"	36	J55	STC	2235'
5 1/2"	17	M95-110	LTC	10757'



Atkin

U. Allen

L. Allen

Chester

107 700 5 1/2" (107 700 5 1/2")

107 575 1 1/2" (107 575 1 1/2") + 150 5 1/2" (107 575 1 1/2")

107 575 1 1/2" (107 575 1 1/2")

AFTER



marbob
energy corporation

September 22, 2005

Oil Conservation Division
1301 W. Grand Ave.
Artesia, NM 88210

Attention: Bryan Arrant

Re: Dime State #1
1980' FSL & 1580' FEL
Section 30, T18S, R28E
Eddy County, New Mexico

Dear Bryan:

Marbob Energy Corporation plans to recompleate this well in the Atoka, Strawn, Canyon or Wolfcamp formation and we don't anticipate opening any formations that contain H2S gas during the recompletion process. Therefore, we do not believe that an H2S contingency plan is necessary.

If you have questions or need further information, please call.

Sincerely,

Diana Briggs
Production Analyst

DB/mp