

Office:

District I

1625 N. French Dr., Hobbs, NM 88240

District II

1301 W. Grand Ave., Artesia, NM 88210

District III

1000 Rio Brazos Rd., Aztec, NM 87411

District IV

1220 S. St. Francis Dr., Santa Fe, NM 87505

RECEIVED

MAR 11 2013

NMOCD ARTESIA

Minerals and Natural Resources

OIL CONSERVATION DIVISION

1220 South St. Francis Dr.

Santa Fe, NM 87505

June 19, 2008

WELL API NO.

30-015-41034

5. Indicate Type of Lease

STATE ☐ FEE ☒

6. State Oil &amp; Gas Lease No.

7. Lease Name or Unit Agreement Name

Regulator 29 SWD

8. Well Number #1

9. OGRID Number

258462

10. Pool name or Wildcat

SWD, Devonian (96101)

## SUNDRY NOTICES AND REPORTS ON WELLS

(DO NOT USE THIS FORM FOR PROPOSALS TO DRILL OR TO DEEPEN OR PLUG BACK TO A DIFFERENT RESERVOIR. USE "APPLICATION FOR PERMIT" (FORM C-101) FOR SUCH PROPOSALS.)

1. Type of Well: Oil Well ☐ Gas Well ☒ Other

2. Name of Operator

Nadel and Gussman HEYCO, LLC

3. Address of Operator

P.O. Box 1936, Roswell, NM 88202

4. Well Location

Unit I : 1650' feet from the South line and 990' feet from the East line

Section 29

Township 18S

Range 26E

NMPM EDDY

County

11. Elevation (Show whether DR, RKB, RT, GR, etc.)

3412' GR

## 12. Check Appropriate Box to Indicate Nature of Notice, Report or Other Data

## NOTICE OF INTENTION TO:

PERFORM REMEDIAL WORK ☐PLUG AND ABANDON ☐TEMPORARILY ABANDON ☐CHANGE PLANS ☐PULL OR ALTER CASING ☐MULTIPLE COMPL ☐DOWNHOLE COMMINGLE ☐

## SUBSEQUENT REPORT OF:

REMEDIAL WORK ☐ALTERING CASING ☐COMMENCE DRILLING OPNS. ☐P AND A ☐CASING/CEMENT JOB ☐OTHER: ☐OTHER: ☒ Spud/Surface Csg and Cement Report

13. Describe proposed or completed operations. (Clearly state all pertinent details, and give pertinent dates, including estimated date of starting any proposed work). SEE RULE 1103. For Multiple Completions: Attach wellbore diagram of proposed completion or recompletion.

2/26/13 - Spud 3:30 P.M.

3/1/13 - Surface, Hole Size 17 1/2" to 926'. Run 23 Jts, 13 3/8" J-55, 54.5# BTC Csg. Lead: 580 sks, Class "C" +4%PF20+2%PF1+0.125# sksPF29+.25#/sksPF46, Wt 135, Yield:1.74, Gal/SK 9.14. Tail:200 sks. Class "C"+1%PF1 Wt. 14.80 Yield 1.33 Gal/SK 6.32. TD Surface Hole with full returns. Pump sweep and spot Hi Vis Pill f/csg.

See Attachments

Spud Date:

2/26/2013

Rig Release Date:

I hereby certify that the information above is true and complete to the best of my knowledge and belief.

SIGNATURE

TITLE

Production Analyst

DATE

3/89/2013

Type or print name: Tammy R. Link

E-mail address: tlink@heycoenergy.com

PHONE: 575-623-6601

For State Use Only

APPROVED

BY:

TITLE

Dist R Supervisor

DATE

3/14/2013

Conditions of Approval (if any):

# SUMMARY CASING AND CEMENTING REPORT

STRING:

SURFACE

DATE: 11/5/2012

OPERATOR:

NADEL & GUSSMAN HEYCO

WELL: REGULATOR 29 SWD 1

CONTRACTOR:

SILVER OAK

RIG: #1

REP: KEITH CANNON

## CASING DETAIL

HOLE SIZE:

17 1/2

DEPTH: 926

17 1/2" HOLE

926.00

13 3/8 FLOAT SHOE

0.75

2 JT. 13 3/8 J-55 54.5# BTC CSG

925.25

13 3/8 FLOAT COLLAR

85.69

839.56

21- JTS. 13 3/8 J-55 54.5# BTC CSG

1.10

838.46

844.33

-5.87

KB TO GL

17.00

CENTRALIZERS PLACED: 883.45', 840.56', 796.86', 713.23', 629.84'

## REMARKS:

TOTAL CASING DELIVERED.... 24 JTS. 54.5# J-55 13 3/8 BTC (1030.20') FROM KC Pipe  
ALL CASING WAS DRIFTED, CLEANED, & VISUALLY INSPECTED ON LOCATION.  
ELECT. WELD SHOE TOP AND BOTTOM OF 1ST COLLAR AND BTM OF 2ND COLLAR UP.  
TAGGED BOTTOM WASH 6' TO BTM. CIRCULATED CAPACITY & ANNULAR VOLUME

## EXCESS CASING

CASING NOT USED .... 2 JTS. NOT USED J-55 54.5# BTC ( 85.77' )

DISPOSITION

## CEMENTING DATA

COMPANY: PAR FIVE

DISTRICT: ARTESIA

## 1ST STAGE:

PREFLUSH: 20 bbls F/W SPACER

LEAD:

580 SKS. CLASS "C" + 4% PF20 + 2% PF1 + 0.125#/sks PF29 + .25#/sks PF46, WT 13.5, YIELD  
1.74, GAL/SK 9.14

TAIL:

200 SKS. CLASS "C" + 1% PF1 WT 14.80 YIELD 1.33 GAL/SK 6.32

# SUMMARY CASING AND CEMENTING REPORT

**NOTE:**

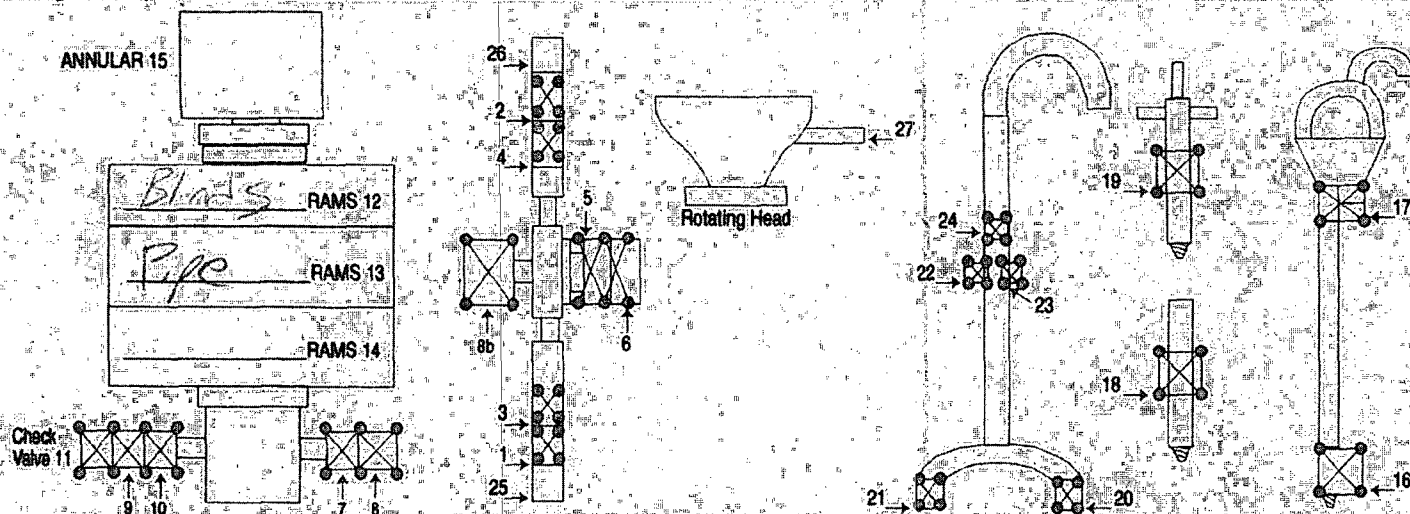
TD SURF HOLE WITH FULL RETURNS. PUMP SWEEP AND SPOT HI VIS PILL F/ CSG -  
RU AND CEMENTED. PLUG DN @ 2:35PM 2/28/13. CIRC 106 SKS (33BBLS) TO PIT  
WOC 18 HRS. TEST CSG T/ 1000PSI OK



**WELD • BOP TESTING**  
**NIPPLE UP SERVICE • BOP LIFTS • TANDEM**  
**MUD AND GAS SEPARATORS**  
**Lovington, NM • 575-398-4540**

VOICE  
17585

Company Madell & Gossing, Hefco Date 7-13 Start Time 5:00 ☐ am ☐ pm  
Lease Regulator - 99 - Sub #1 County Idaho State NM  
Company Man \_\_\_\_\_  
Wellhead Vendor \_\_\_\_\_ Tester Sean Sacher  
Drig. Contractor Silver Oak Rig # 1  
Tool Pusher \_\_\_\_\_  
Plug Type C-22 Plug Size 12" Drill Pipe Size 4 1/2" x 11' x 1.4  
Casing Valve Opened \_\_\_\_\_ Check Valve Open \_\_\_\_\_

[illegible]

4 HR@ [REDACTED]

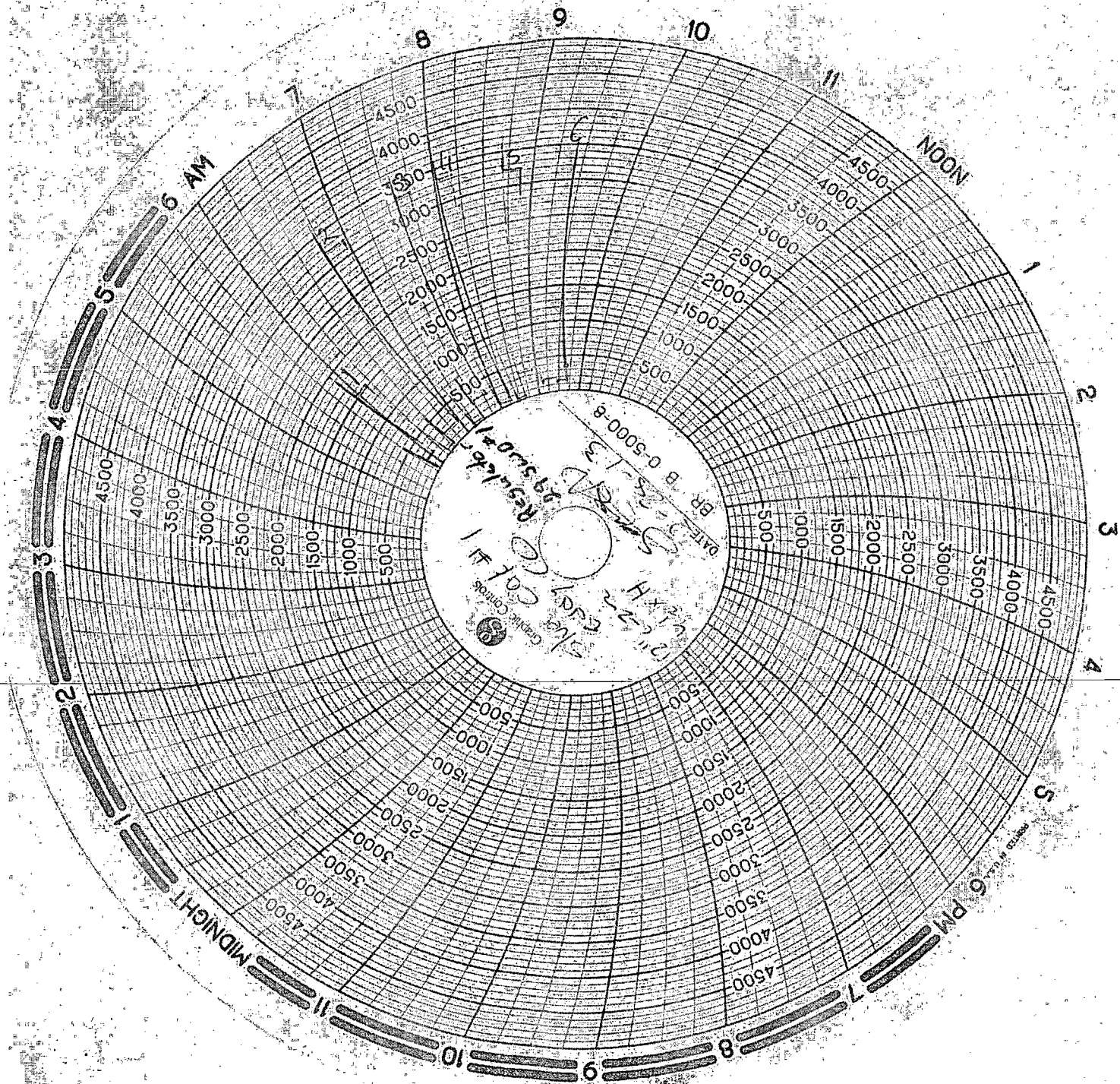
HR @

Mileage                      @                     

**SUB TOTAL**

# TAX

**TOTAL**



# PAR FIVE

**DESIGN – EXECUTE – EVALUATE – REPORT**

**13 3/8 SURFACE**

**NADEL & GUSSMAN/HEYCO  
REGULATOR 29 SWD 1  
EDDY COUNTY, NEW MEXICO**

**Prepared By: Diego Ortega**

**FIELD SPECIALIST**

**ARTESIA DISTRICT**

**1-575-513-0993**

**28 FEBUARY 2013**



**Cementing Service  
Report**

Treatment Number: 00002136	Date: 2-28-2013
STAGE:	API NO:

WELL NAME AND NO.: REGULATOR 29 SWD 1		LOCATION (LEAGAL)		RIG NAME: Silver Oak #1	
FIELD/POOL	FORMATION	PO#	WELL DATA	BOTTOM	TOP
COUNTY/PARISH: Eddy	STATE: NM	AFE NO.	BIT SIZE: 17.5	CSG/Liner Size: 13.375	
NAME: NADEL & GUSSMAN/HEYCO			TOTAL DEPTH: 926'	WEIGHT: 54.5	
			ROT: CABLE	FOOTAGE: 931.87	
AND			MUD TYPE	THREAD	
			MUD DENSITY	LESS FOOTAGE SHOE JOINT(S)	87.54'
ADDRESS			MUD VISC	Disp. Capacity	131
			NOTE: Include Footage From Ground Level To Head In Disp. Capacity		
ZIP CODE			SHOE FLOAT	TYPE: Insert	
SPECIAL INSTRUCTIONS Cmt 13 3/8 Surf Csg as per Co. Rep.			DEPTH	844.33'	
			SHOE	TYPE: Guide	
			DEPTH	931.87'	
			TBG	D.P.	
IS CASING/TUBING SECURED? YES			SIZE		
CASING WEIGHT + SURFACE AREA (3.14 X R <sup>2</sup> )			WEIGHT		
LIFT PRESSURE: 315 PSI			GRADE	TAIL PIPE: SIZE	DEPTH
PRESSURE LIMIT: 2000 PSI			THREAD	TUBING VOLUME	Bbls
BUMP PLUG TO: +/- 500 PSI			NEW USED	CASING VOL. BELOW TOOL	Bbls
			DEPTH	TOTAL	Bbls
				ANNUAL VOLUME	Bbls

TIME	PRESSURE		VOLUME PUMPED		JOB SCHEDULED FOR			ARRIVED ON LOCATION		LEFT LOCATION	
	TBG OR D.P.	CASING	INCREMENT	CUM	INJET RATE	FLUID TYPE	FLUID DENSITY	TIME	DATE	TIME	DATE
13:00								3:00	2-28-2013	15:00	2-28-2013
13:19	XXX	2000				FW	8.33	SERVICE LOG DETAIL			
13:21	XXX	110			4			PRE-JOB SAFETY MEETING			
13:26	XXX		20					PSI TEST			
13:26	XXX	250			5.5	CMT	13.5	START FW SPACER			
13:54	XXX		180		5.6	CMT	14.8	END SPACER			
13:54	XXX	270						START LEAD			
14:04	XXX		47					END LEAD			
14:04	XXX							START TAIL			
14:05	XXX							END TAIL			
14:06	XXX	160			6	FW	8.33	SHUT DOWN			
14:29	XXX	300	120		3			DROP PLUG			
14:32	XXX	1010	131		3			START DISP			
14:33	XXX							SLOW RATE			
XXX								BUMP PLUG			
XXX								CHECK FLOATS			
XXX								106 SKS TO SURF			
XXX								33 BBLS TO SURF			
XXX								THANK YOU PAR-FIVE			

SYSTEM CODE	NO. OF SACKS	YIELD CU. FT/SK	COMPOSITION OF CEMENTING SYSTEMS				SLURRY MIXED	
1	580	1.75	C + 4% PF20 + 2% PF1 + 0.125#/sk PF29 + 25#/sk PF46				BBLs	DENSITY
2	200	1.33	C + 1% PF1				180	13.5
3			200# PF999 SUGAR				47	14.8
4			1-13 3/8 TRP					
5			(PAR-FIVE PROVIDED TOP PLUG)					
6								

BREAKDOWN FLUID TYPE		VOLUME		DENSITY		PRESSURE		500		MAX		0		MIN	
HESITATION SQ.		RUNNING SQ.		CIRCULATION LOST		YES		NO		Cement Circulated To Surf.		Yes		No	
BREAKDOWN		PSI		FINAL		PSI		DISPLACEMENT VOL		131		Bbls			
Washed Thru Perfs		Yes		No		TO		FT		MEASURED DISPLACEMENT		WIRELINE			
PERFORATIONS		TO		TO		TO		TO		CUSTOMER REPRESENTATIVE		Mr. Keith Cannon			
		TO		TO		TO		TO				Diego Ortega			

NADEL&GUSSMAN/HEYCO  
REGULATOR 29 SWD 1  
13 3/8" SURF. 2/28/2013

LIFT 320#  
DIFF 300#

Recipe:  
PSI Test 2000#

20 Bbls FW  
180 Bbls @ 13.5# in BIN R/T ABT  
(126 Bbls H2O)  
47 Bbls @ 14.8# in F/T ABT  
(30 Bbls H2O)

SHUT DOWN & DROP PLUG

DISPLACEMENT = 131 Bbls  
131 Bbls FW @ 6 BPM  
SLOW RATE @ 121  
NO MORE THAN 1 BBLS OVER.  
Bump Plug 500# over.  
PLUG DOWN @ 14:32 NM TIME W/ 1010#  
106 Sks = 33 Bbls to Surf.

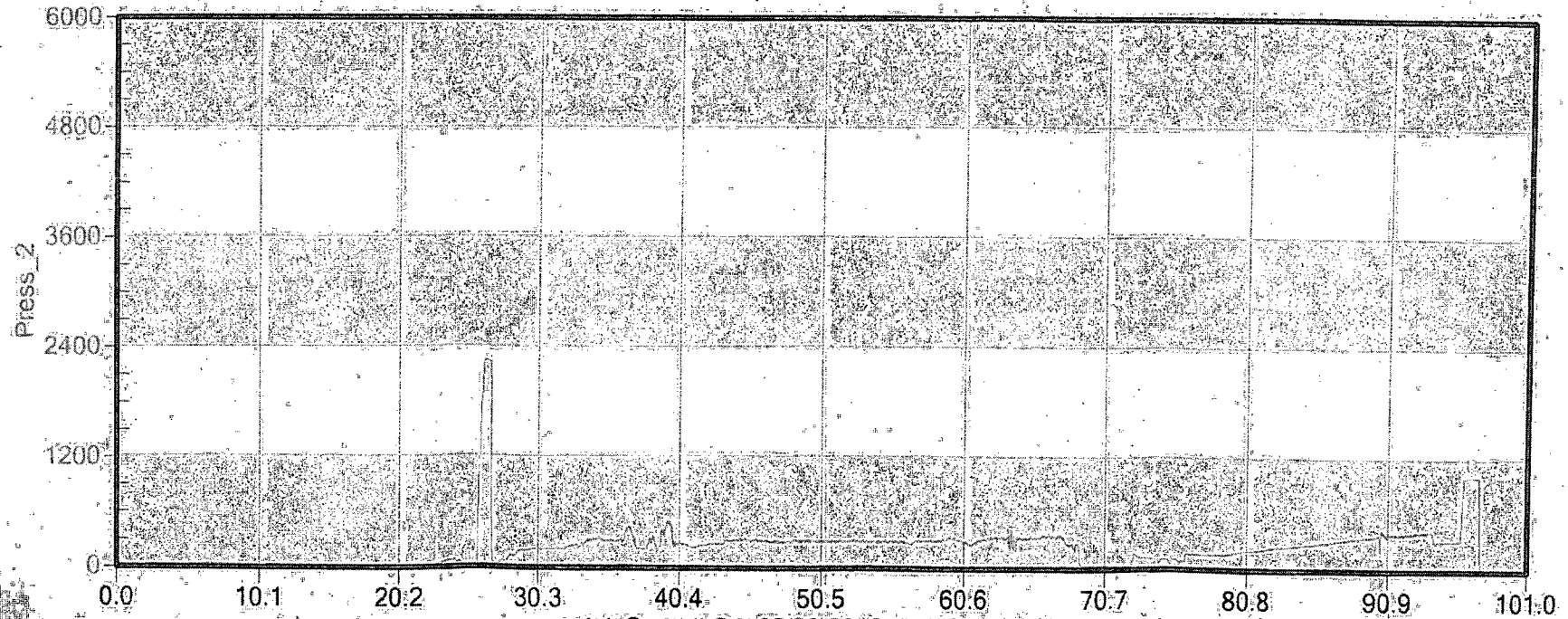
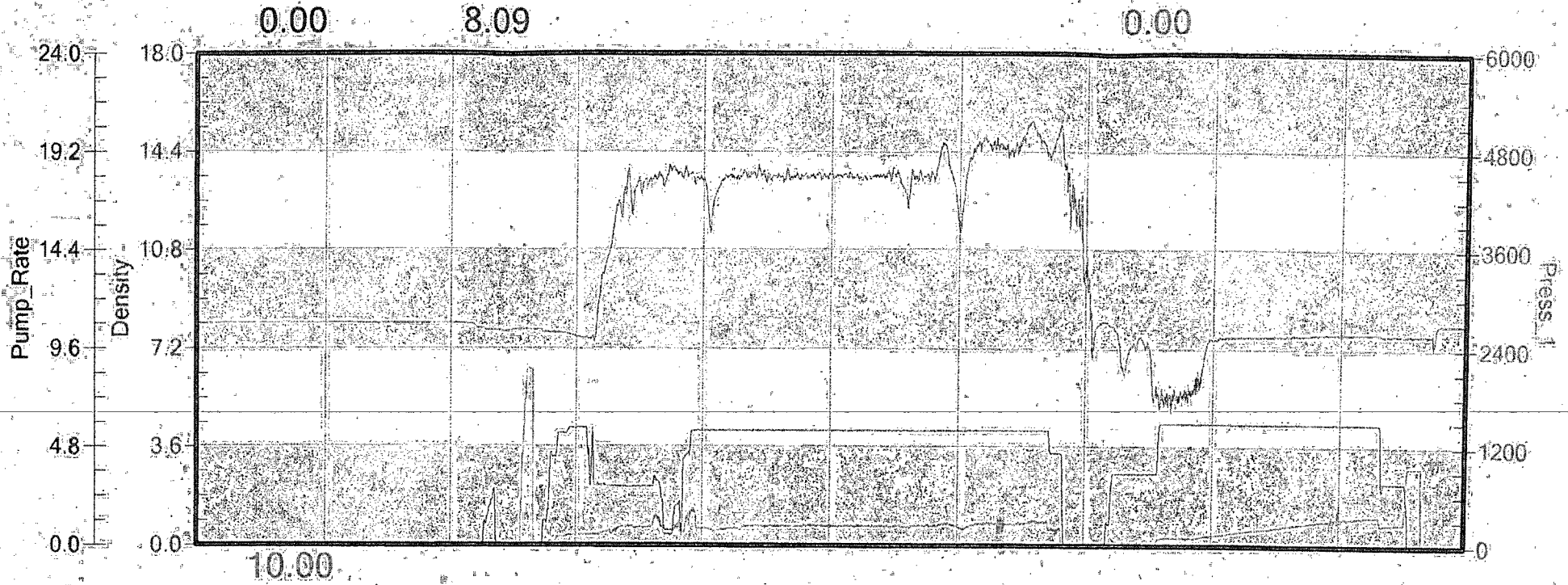
Lead = 580 Sks C + adds.  
Yield = 1.74 H2O = 9.14 gal/sk  
Tail = 200 Sks C + adds.  
Yield = 1.33 H2O = 6.32 gal/sk

TOTAL H2O NEEDED = 600 Bbls

Casing 54.5#  
Burst 2184  
Collapse 904



Nadel & Gussman  
Regulator 29 SWD #1



Job Started On: 02/28/2013 @ 12:53:28 PM