

District I  
1625 N. French Dr., Hobbs, NM 88240  
District II  
1301 W. Grand Avenue, Artesia, NM 88210  
District III  
1000 Rio Brazos Rd., Aztec, NM 87410  
District IV  
1220 S. St. Francis Dr., Santa Fe, NM 87505

State of New Mexico  
Energy, Minerals & Natural Resources

Oil Conservation Division  
1220 S. St. Francis Dr.  
Santa Fe, NM 87505

Form C-101

March 4, 2004

RECEIVED

SEP 27 2005

OCD-ARTESIA

Submit to appropriate District Office

State Lease - 6 Copies

Fee Lease - 5 Copies

☐ AMENDED REPORT

**APPLICATION FOR PERMIT TO DRILL, RE-ENTER, DEEPEN, PLUGBACK, OR ADD A ZONE**

<sup>1</sup> Operator Name and Address Nearburg Producing Company 3300 N A St., Bldg 2, Ste 120, Midland, TX 79705		<sup>2</sup> OGRID Number 015742
<sup>4</sup> Property Code 35141	<sup>5</sup> Property Name Red Lake 32 State 0	<sup>3</sup> API Number 30- 015- 34369
		<sup>6</sup> Well No. 1

<sup>7</sup> Surface Location

UL or lot no.	Section	Township	Range	Lot. Idn	Feet from the	North/South Line	Feet from the	East/West line	County
0	32	17S	27E		990	South	1650	East	Eddy

<sup>8</sup> Proposed Bottom Hole Location If Different From Surface

UL or lot no.	Section	Township	Range	Lot. Idn	Feet from the	North/South Line	Feet from the	East/West line	County

<sup>9</sup> Proposed Pool 1 Red Lake; Glorietta - Yeso 51120	<sup>10</sup> Proposed Pool 2
--	-------------------------------

Drilling Pit Location and Other Information

UL or lot no.	Section	Township	Range	Lot. Idn	Feet from the	North/South Line	Feet from the	East/West line	County
0	32	17S	27E		990	South	1650	East	Eddy

Depth to ground water	Distance from nearest fresh water well	Distance from nearest surface water
-----------------------	--	-------------------------------------

<sup>11</sup> Work Type Code N	<sup>12</sup> Well Type Code 0	<sup>13</sup> Cable/Rotary Rotary	<sup>14</sup> Lease Type Code S	<sup>15</sup> Ground Level Elevation 3479
<sup>16</sup> Multiple No	<sup>17</sup> Proposed Depth 3700'	<sup>18</sup> Formation Glorietta-Yeso	<sup>19</sup> Contractor United	<sup>20</sup> Spud Date 10/15/05

<sup>21</sup> Proposed Casing and Cement Program

Hole Size	Casing Size	Casing weight/foot	Setting Depth	Sacks of Cement	Estimated TOC
12-1/4	8-5/8	32#	1200	600	Surface
7-7/8	5-1/2	17#	3700	500	Surface

<sup>22</sup> Describe the proposed program. If this application is to DEEPEN or PLUG BACK, give the data on the present productive zone and proposed new productive zone. Describe the blowout prevention program, if any. Use additional sheets if necessary.

Propose to drill well to sufficient depth to evaluate the Yeso formation. Perf, test and stimulate as necessary to establish production.

Acreege dedication is 40 acres.

<sup>23</sup> I hereby certify that the information given above is true and complete to the best of my knowledge and belief. I further certify that the drilling pit will be constructed according to NMOCD guidelines ☒ a general permit ☐, or an (attached) alternative OCD-approved plan ☐.

Signature: *Sarah Jordan*

Printed name: Sarah Jordan

Title: Production Analyst

E-mail Address: sjordan@nearburg.com

Date: 9.26.05

Phone: 432/686-8235 x 203

Approved by:

OIL CONSERVATION DIVISION

*James L. Brown*  
District II Supervisor

Title:

Approval Date:

SEP 30 2005

Expiration Date:

SEP 30 2006

Conditions of A  
Attached ☐

NOTIFY OCD OF SPUD & TIME  
TO WITNESS CEMENTING OF  
SURFACE CASING

# State of New Mexico

## DISTRICT I

1625 N. FRENCH DR., HOBBS, NM 88240

Energy, Minerals and Natural Resources Department

Form C-102

## DISTRICT II

1301 W. GRAND AVENUE, ARTESIA, NM 88210

## OIL CONSERVATION DIVISION

1220 SOUTH ST. FRANCIS DR.  
Santa Fe, New Mexico 87505

Submit to Appropriate District Office

State Lease - 4 Copies

Fee Lease - 3 Copies

## DISTRICT III

1000 Rio Brazos Rd., Aztec, NM 87410

## DISTRICT IV

1220 S. ST. FRANCIS DR., SANTA FE, NM 87505

## WELL LOCATION AND ACREAGE DEDICATION PLAT

☐ AMENDED REPORT

API Number	Pool Code 51120	Pool Name Red Lake - Gloriette - Veso
Property Code	Property Name RED LAKE 32 STATE 0	Well Number 1
OGRID No. 015742	Operator Name NEARBURG PRODUCING COMPANY	Elevation 3479'

### Surface Location

UL or lot No.	Section	Township	Range	Lot Idn	Feet from the	North/South line	Feet from the	East/West line	County
0	32	17-S	27-E		990	SOUTH	1650	EAST	EDDY

### Bottom Hole Location If Different From Surface

UL or lot No.	Section	Township	Range	Lot Idn	Feet from the	North/South line	Feet from the	East/West line	County
Dedicated Acres 40	Joint or Infill	Consolidation Code	Order No.						

NO ALLOWABLE WILL BE ASSIGNED TO THIS COMPLETION UNTIL ALL INTERESTS HAVE BEEN CONSOLIDATED  
OR A NON-STANDARD UNIT HAS BEEN APPROVED BY THE DIVISION

<p>GEODETIC COORDINATES NAD 27 NME</p> <p>Y=649803.4 N X=511199.4 E</p> <p>LAT.=32°47'11.02" N LONG.=104°17'48.81" W</p>	<p><b>OPERATOR CERTIFICATION</b></p> <p>I hereby certify the the information contained herein is true and complete to the best of my knowledge and belief.</p> <p><i>[Signature]</i> Signature</p> <p><i>[Printed Name]</i> Printed Name</p> <p><i>[Title]</i> Title</p> <p><i>[Date]</i> Date</p>
	<p><b>SURVEYOR CERTIFICATION</b></p> <p>I hereby certify that the well location shown on this plat was plotted from field notes of actual surveys made by me or under my supervision, and that the same is true and correct to the best of my belief.</p> <p>SEPTEMBER 9, 2005</p> <p>Date Surveyed _____ JR</p> <p>Signature &amp; Seal of Professional Surveyor</p> <p><i>[Signature]</i> GARY E. ELLISON 05.11.1390 12641</p>
	<p>Certificate No. GARY E. ELLISON 12641</p>
	<p>REGISTERED PROFESSIONAL SURVEYOR</p>

District I  
1625 N. French Dr., Hobbs, NM 88240  
District II  
1301 W. Grand Avenue, Artesia, NM 88210  
District III  
1000 Rio Brazos Road, Aztec, NM 87410  
District IV  
1220 S. St. Francis Dr., Santa Fe, NM 87505

State of New Mexico  
Energy, Minerals and Natural Resources

Oil Conservation Division  
1220 South St. Francis Dr.  
Santa Fe, NM 87505

Form C-144  
March 12, 2004

For drilling and production facilities, submit to appropriate NMOCD District Office.  
For downstream facilities, submit to Santa Fe office.

Pit or Below-Grade Tank Registration or Closure

Is pit or below-grade tank covered by a "general plan"? Yes ☐ No ☒  
Type of action: Registration of a pit or below-grade tank ☒ Closure of a pit or below-grade tank ☐

RECEIVED

SEP 27 2005

OOD-ARTESIA

Operator: Nearburg Producing Company Telephone: 686-8235 e-mail address: s.jordan@nearburg.com  
Address: 3300 N A St., Bldg 2, Ste 120, Midland, TX 79705  
Facility or well name: Red Lake 32 St 0 #1 API #: 30-015-34369 U/L or Qtr/Qtr 0 Sec 32 T 17S R 27E  
County: Eddy Latitude \_\_\_\_\_ Longitude \_\_\_\_\_ NAD: 1927 ☒ 1983 ☐ Surface Owner Federal ☐ State ☒ Private ☐ Indian ☐

Pit

Type: Drilling ☒ Production ☐ Disposal ☐  
Workover ☐ Emergency ☐  
Lined ☒ Unlimited ☐  
Liner type: Synthetic ☒ Thickness 12mil Clay ☐ Volume \_\_\_\_\_ bbl

Below-grade tank

Volume: \_\_\_\_\_ bbl Type of fluid: \_\_\_\_\_  
Construction material: \_\_\_\_\_  
Double-walled, with leak detection? Yes ☐ If not, explain why not. \_\_\_\_\_

Depth to ground water (vertical distance from bottom of pit to seasonal high water elevation of ground water.)

Less than 50 feet	(20 points)
50 feet or more, but less than 100 feet	(10 points)
100 feet or more	(0 points) X

Wellhead protection area. (Less than 200 feet from a private domestic water source, or less than 1000 feet from all other water sources.)

Yes	(20 points)
No	(0 points) X

Distance to surface water: (horizontal distance to all wetlands, playas, irrigation canals, ditches, and perennial and ephemeral watercourses.)

Less than 200 feet	(20 points)
200 feet or more, but less than 1000 feet	(10 points)
1000 feet or more	(0 points) X

Ranking Score (Total Points)	0
------------------------------	---

If this is a pit closure: (1) attach a diagram of the facility showing the pit's relationship to other equipment and tanks. (2) Indicate disposal location: onsite ☐ offsite ☐ If offsite, name of facility \_\_\_\_\_ (3) Attach a general description of remedial action taken including remediation start date and end date. (4) Groundwater encountered: No ☐ Yes ☐ If yes, show depth below ground surface \_\_\_\_\_ ft. and attach sample results. (5) Attach soil sample results and a diagram of sample locations and excavations.

I hereby certify that the information above is true and complete to the best of my knowledge and belief. I further certify that the above-described pit or below-grade tank has been/will be constructed or closed according to NMOCD guidelines ☒, a general permit ☐, or an (attached) alternative OCD-approved plan ☐.

Date: 9/26/05

Printed Name/Title: Sarah Jordan, Production Analyst

Signature: [Signature]

Your certification and NMOCD approval of this application/closure does not relieve the operator of liability should the contents of the pit or tank contaminate ground water or otherwise endanger public health or the environment. Nor does it relieve the operator of its responsibility for compliance with any other federal, state, or local laws and/or regulations.

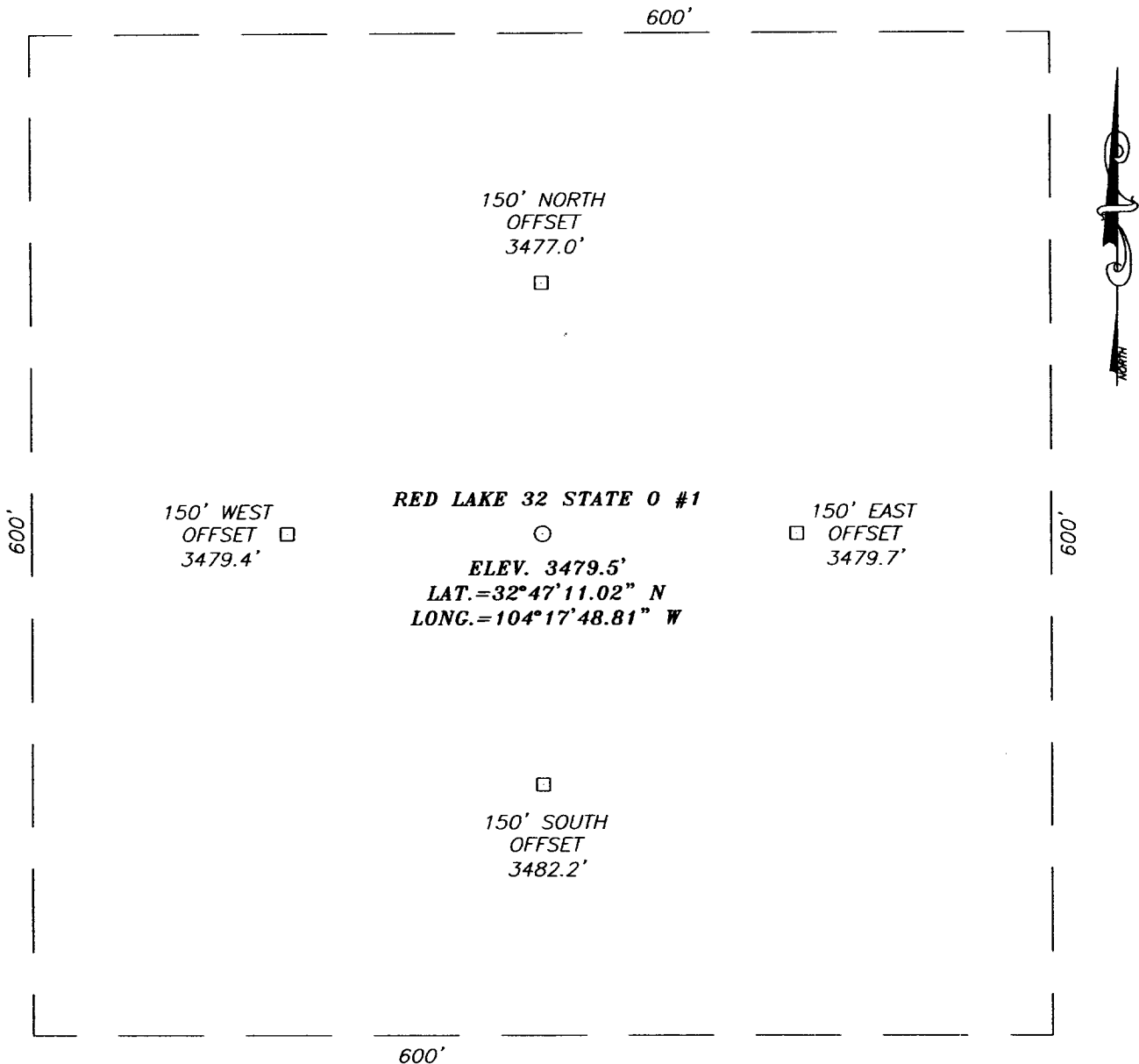
Approval:

Date: 9/30/05

Printed Name/Title: Mike Bratcher Asst. Dir.

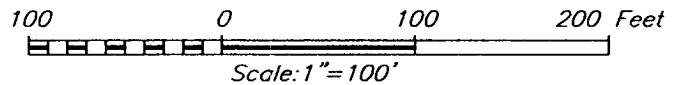
Signature: [Signature]

**SECTION 32, TOWNSHIP 17 SOUTH, RANGE 27 EAST, N.M.P.M.,**  
 EDDY COUNTY, NEW MEXICO



**DIRECTIONS TO LOCATION**

FROM U.S. HWY. #82 AND CO. RD. #201 (CHALK BLUFF RD.) GO SOUTH ON CO. RD. #201 APPROX. 3.3 MILES TO A CALICHE ROAD ON THE LEFT. TURN LEFT (EAST) AND GO APPROX. 0.2 MILES. THIS LOCATION IS APPROX. 500' SOUTH.



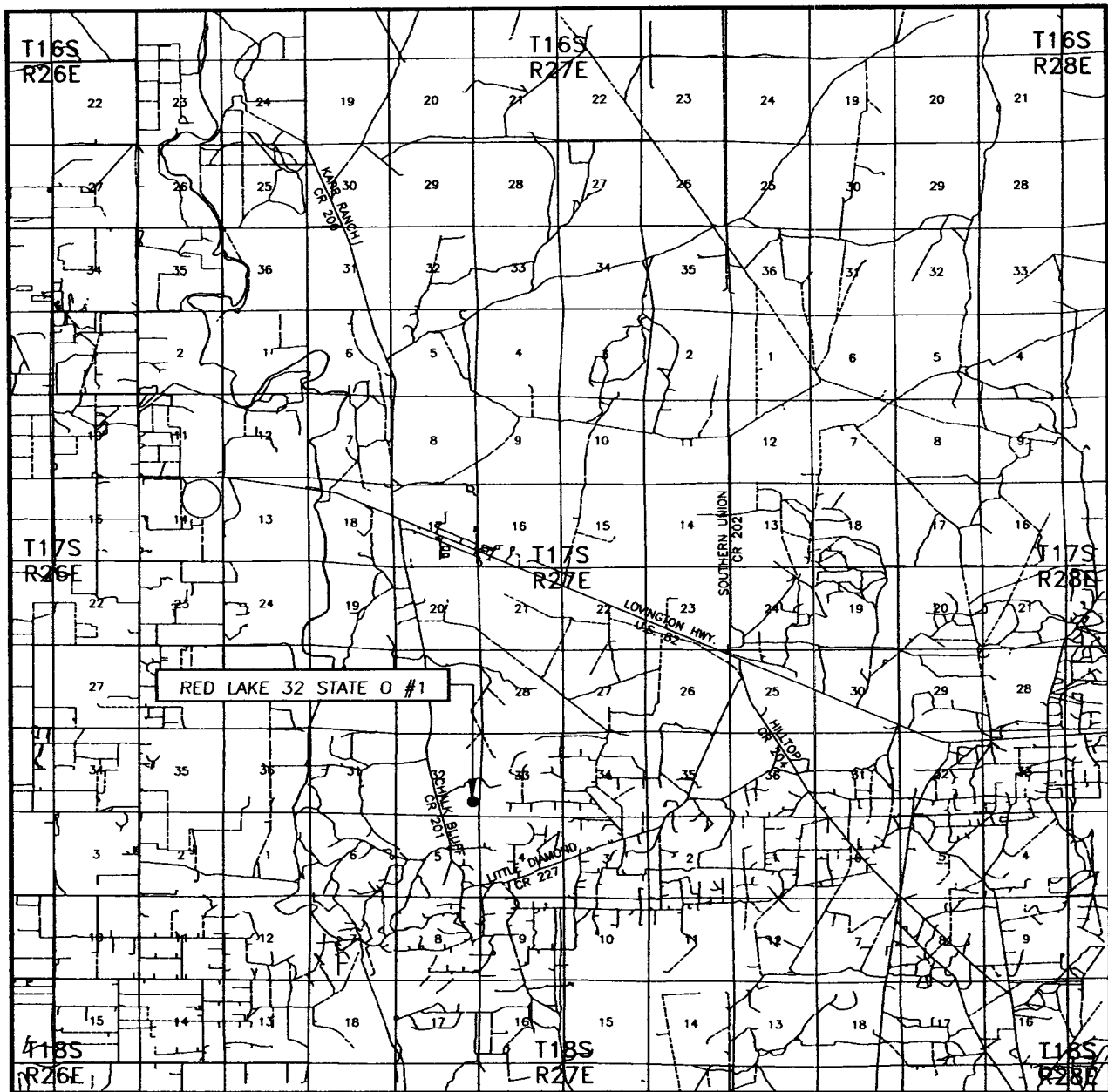
**NEARBURG PRODUCING COMPANY**

RED LAKE 32 STATE O #1 WELL  
 LOCATED 990 FEET FROM THE SOUTH LINE  
 AND 1650 FEET FROM THE EAST LINE OF SECTION 32,  
 TOWNSHIP 17 SOUTH, RANGE 27 EAST, N.M.P.M.,  
 EDDY COUNTY, NEW MEXICO.

Survey Date: 09/09/05	Sheet 1 of 1 Sheets
W.O. Number: 05.11.1390	Dr By: J.R.
Date: 09/19/05	Disk: CD#5
05111390	Scale: 1"=100'

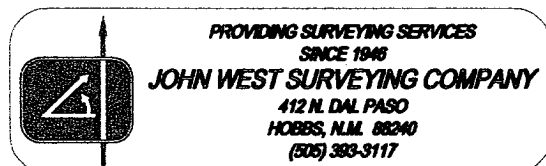
PROVIDING SURVEYING SERVICES  
 SINCE 1946  
**JOHN WEST SURVEYING COMPANY**  
 412 N. DAL PASO  
 HOBBS, N.M. 88240  
 (505) 383-3117

# VICINITY MAP



SCALE: 1" = 2 MILES

SEC. 32 TWP. 17-S RGE. 27-E  
 SURVEY N.M.P.M.  
 COUNTY EDDY  
 DESCRIPTION 990' FSL & 1650' FEL  
 ELEVATION 3479'  
 OPERATOR NEARBURG PRODUCING COMPANY  
 LEASE RED LAKE 32 STATE O





CONTOUR INTERVAL:  
SPRING LAKE, N.M. - 10'

CONTOUR INTERVAL:  
SPRING LAKE, N.M. - 10'

CONTOUR INTERVAL:  
SPRING LAKE, N.M. - 10'

CONTOUR INTERVAL:  
SPRING LAKE, N.M. - 10'

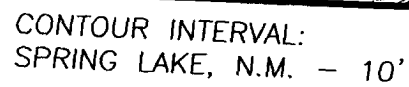
CONTOUR INTERVAL:  
SPRING LAKE, N.M. - 10'

CONTOUR INTERVAL:  
SPRING LAKE, N.M. - 10'

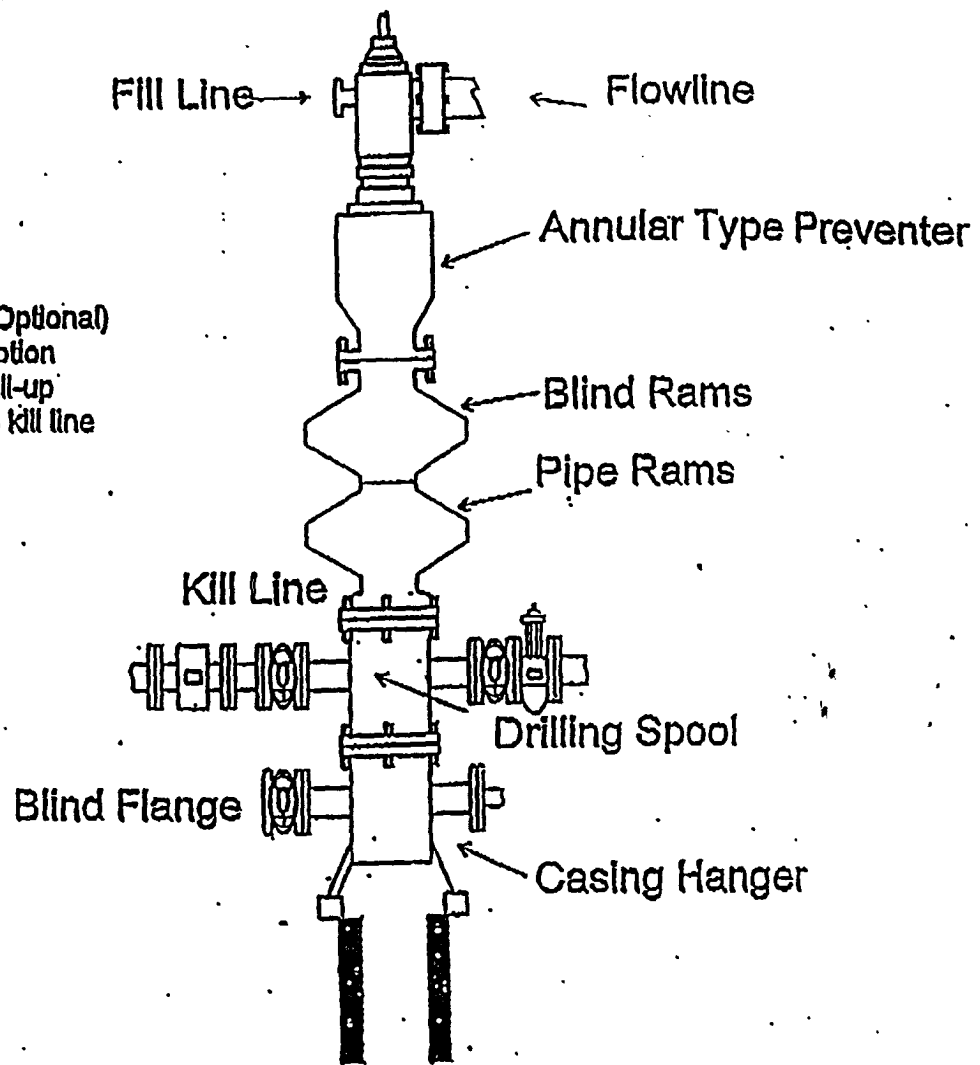
CONTOUR INTERVAL:  
SPRING LAKE, N.M. - 10'

CONTOUR INTERVAL:  
SPRING LAKE, N.M. - 10'

CONTOUR INTERVAL:  
SPRING LAKE, N.M. - 10'

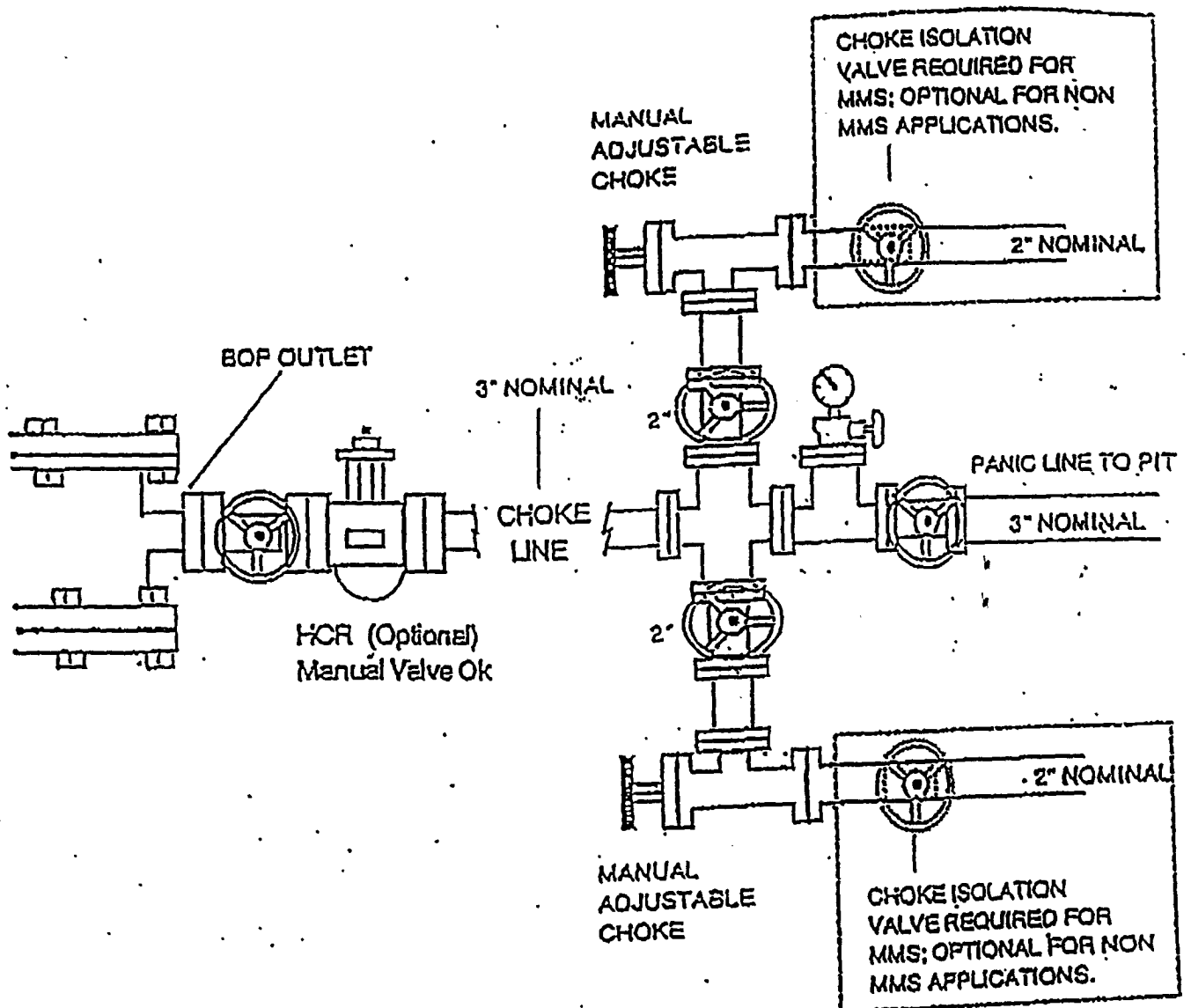


Rotating Head (Optional)  
Drilling Nipple option  
must include a fill-up  
line. Do not use kill line  
for fill up.



1500 Series

# CHOKE MANIFOLD 5M SERVICE





**Nearburg Producing Company**

---

Exploration and Production  
3300 North "A" Street  
Building 2, Suite 120  
Midland, Texas 79705  
432/686-8235  
FAX: 432/686-7806

August 30, 2005 9.26.05

NM Oil Conservation Division  
1301 W. Grand Ave  
Artesia, NM 88210

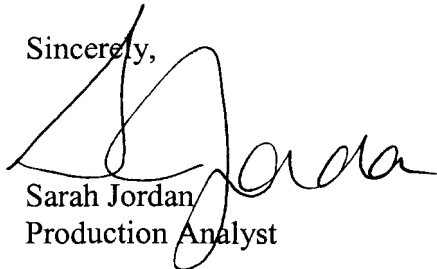
Ref: Red Lake 32 State O #1  
990 FSL and 1650 FEL  
Sec 32, 17S, 27E  
Eddy County, New Mexico

Sirs:

This is a new drill to the Yeso formation. We do not anticipate encountering H2S and fill no contingency plan is needed. Nearburg will have proper equipment on location in case H2S is encountered.

If you have any questions or need further information, please call me at the letterhead number.

Sincerely,

  
Sarah Jordan  
Production Analyst

/sj