

Bratcher, Mike, EMNRD

From: Randall Hicks <r@rthicksconsult.com>
Sent: Wednesday, February 06, 2013 11:20 AM
To: Bratcher, Mike, EMNRD
Cc: mstewart@helmsoil.com; cstoker@helmsoil.com
Subject: Alamo Permian - Three Pit Permits
Attachments: Alamo2013Wells.pdf

Mike

Before I deliver 3 pit permits to you on 2/13, I need to be sure that OCD review/approval of the permits will be quick enough to meet a construction schedule that begins as early as 3/10/13. Alamo Resources will be drilling most of their program using closed loop but desire to use lined pits for three wells. The first well is Wilson #3 (NW of Maljamar on the attached map). The next two wells are the Cedar Lake #5 and State BK #9, east of Loco Hills and we will need approval for these two wells on or soon after 3/20. We need to field check the sites next Tuesday, but from past visits to the area and looking at the published data, all three look good for pits. I will deliver a paper copy of the Wilson permit to you on Wednesday.

I can give you relief on pit permit review for Murchison, as they are starting a 60+ day drilling schedule in Lea County in about 10 days. None of the pending pit permits on your desk need immediate attention. If you need Greg to confirm this delay in needing pit permits from you, I will have him call.

In order to ease the Alamo Resources permit review effort:

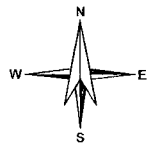
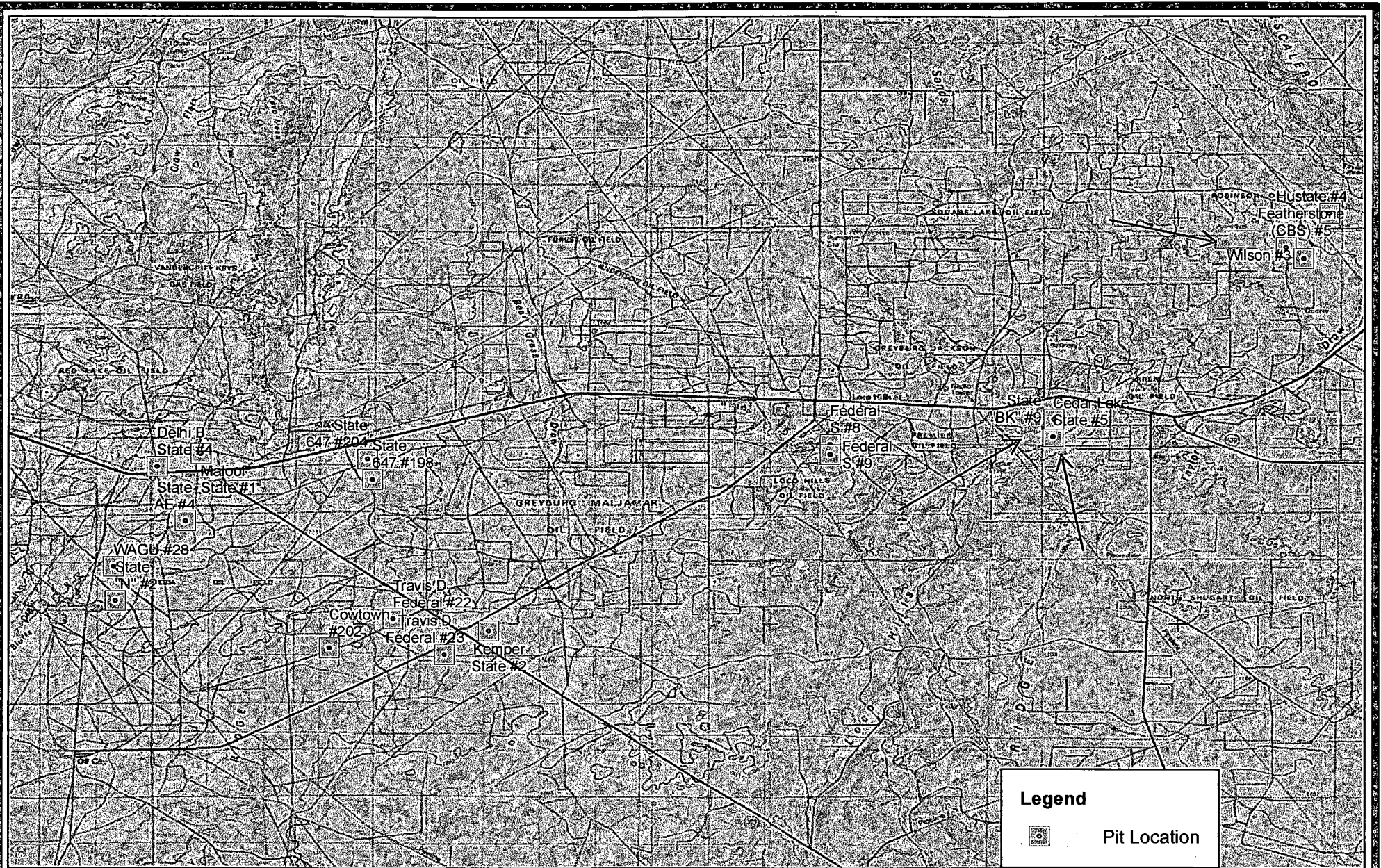
1. We will be using previously approved "generic plans" for pits
2. The pit design for all wells will be identical – however, you will note that the size of the pits are larger than needed. This increase in size will make on-site burial easier than some previously permitted pits.
3. The siting criteria demonstration will follow the same format you have seen in past permits.

For the Wilson #3, you have less than 30 days to review and you will have more than 30 days for the other two wells.

I do not expect a guarantee of approval, but do you think you can review the permits in this timeframe?

Let me know if there is anything I can do to make the permit review faster/easier for you.

Randall Hicks
RT Hicks Consultants
Office: 505-266-5004
Cell: 505-238-9515



0 2
Miles

R.T. Hicks Consultants, Ltd
901 Rio Grande Blvd NW Suite F-142
Albuquerque, NM 87104
Ph: 505.266.5004

Location Map

Alamo Permian


Plate #

Feb 2013

Legend

 Pit Location

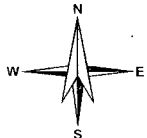
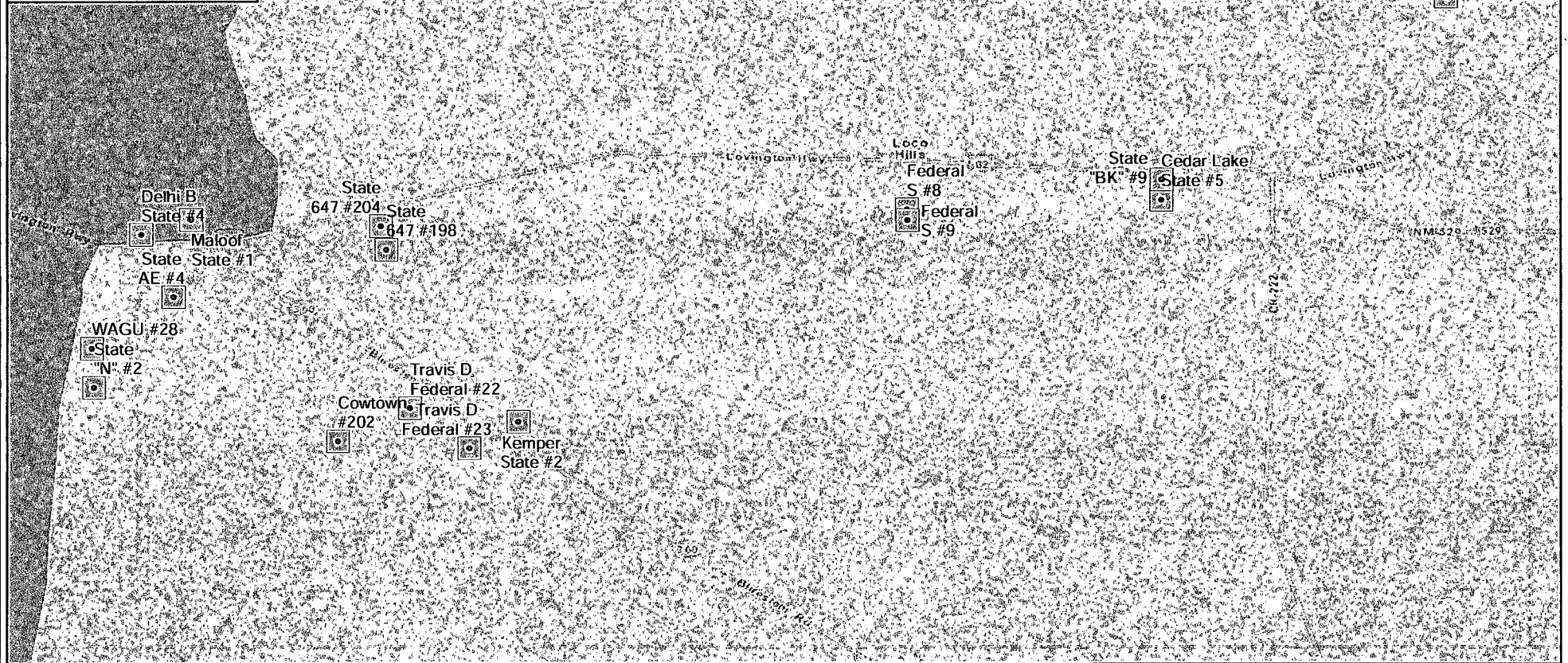
Potential

 CRITICAL

 HIGH

 MEDIUM

 LOW



0 2
Miles

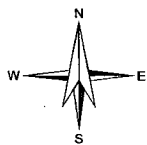
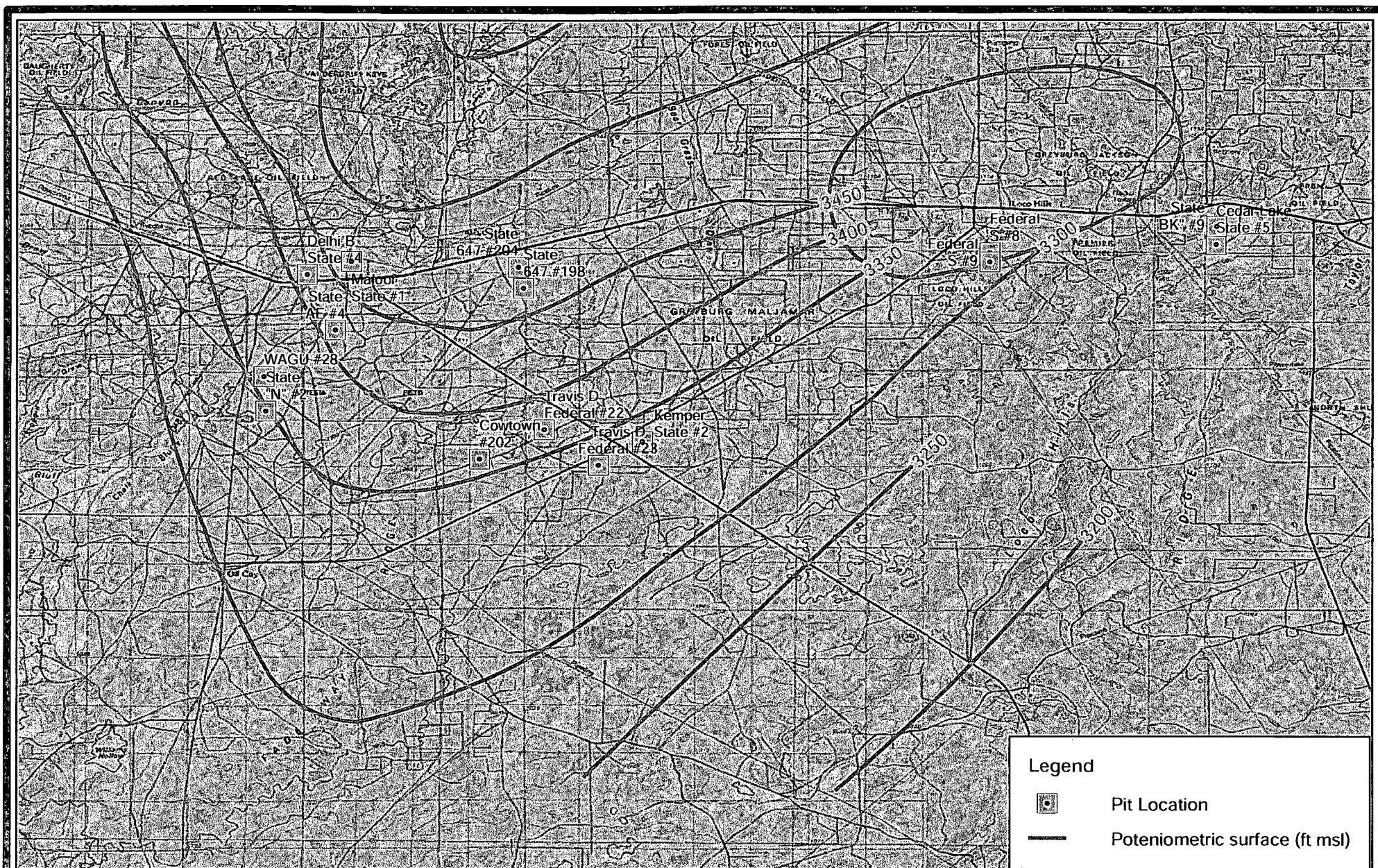
R.T. Hicks Consultants, Ltd
901 Rio Grande Blvd NW Suite F-142
Albuquerque, NM 87104
Ph: 505.266.5004

BLM Cave/Karst Potential Map

Alamo Permian

Plate #

Feb 2013



0 2
Miles

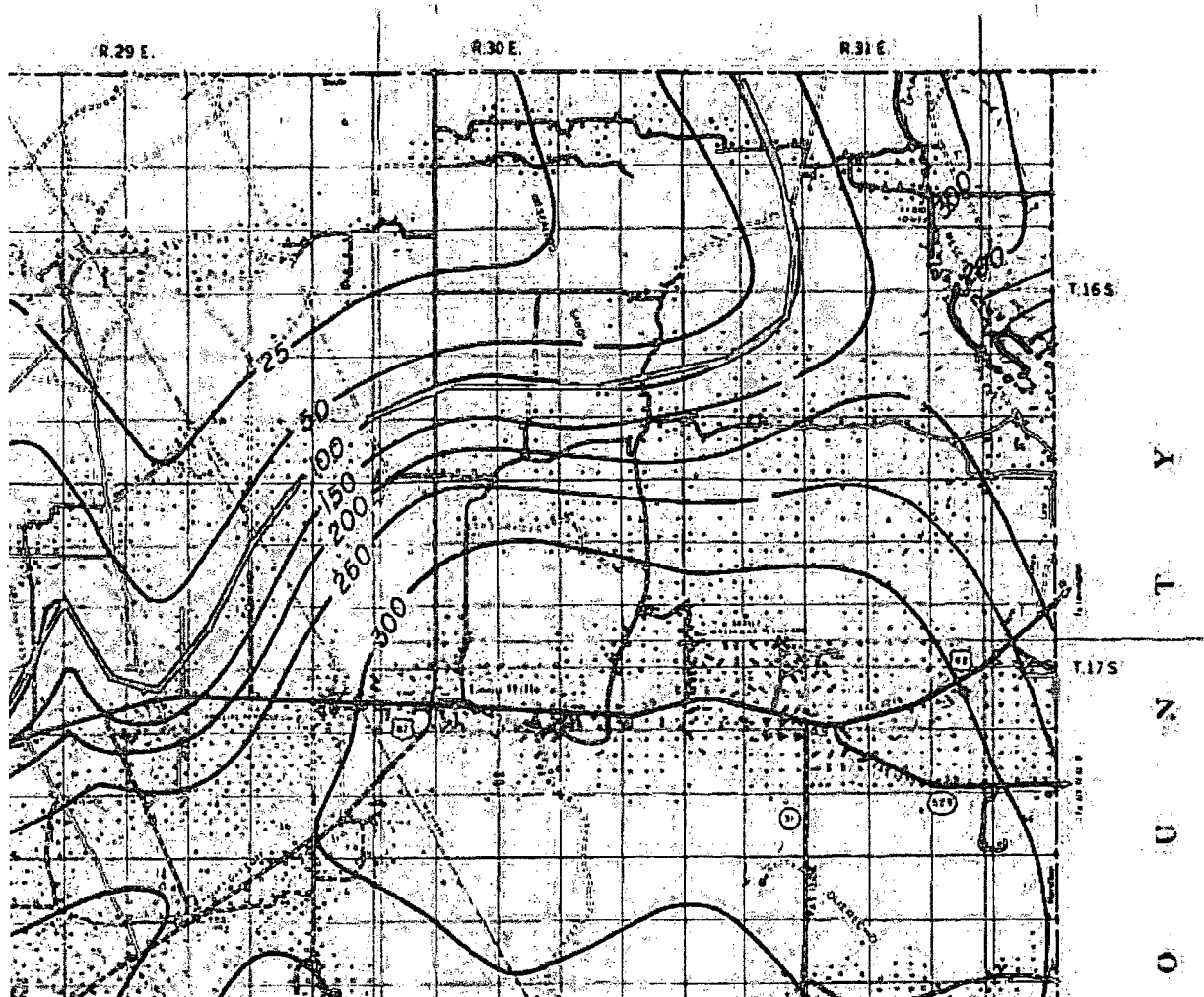
R.T. Hicks Consultants, Ltd
901 Rio Grande Blvd NW Suite F-142
Albuquerque, NM 87104
Ph: 505.266.5004

Groundwater Elevation Map

Alamo Permian

Plate #

Feb 2013



Depth to groundwater based upon published Open File Report OF-95 shows that depth to groundwater in T17S R31E exceeds 100 feet.