



A GYRO TECHNOLOGIES INC. COMPANY

PO Box 261021
Corpus Christi, Texas 78426
(361) 767-0602 • (800) 606-GYRO • Fax (361) 767-0612

January 21, 2013

30 015 40626

Devon Energy Production Company
333 West Sheridan Ave
Oklahoma City, Oklahoma 73102-5010

Attn: Patti Riechers

Re: **Mimosa 24 Federal Com No 001H**

Please find enclosed a copy of the survey from 0' to 9,578' ran on the above referenced well.

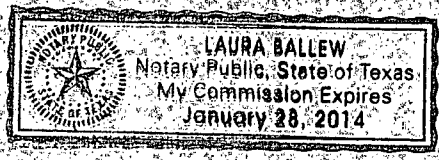
If I can be of any further service, please do not hesitate to call me at 800-606-4976.

Sincerely,

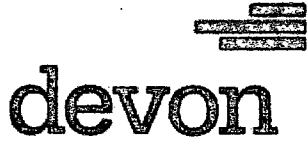
Keith Havelka
Operations

STATE OF TEXAS §
§
COUNTY OF NUECES §

This instrument was acknowledged before me on the 21st day of January
A.D., 2013, by Keith Havelka.



Laura Balley
Notary Public, State of Texas



Company: Devon Energy Production Co., LP
 Lease/Well: Mimosa 24 Federal Com/No 001H



Rig Name: H&P 300
 State/County: New Mexico/Eddy
 Latitude: 32.65, Longitude: -103.83
 GRID North is 0.27 Degrees East of True North
 VS-Azi: 103.62 Degrees

Depth Reference : RKB = 26'

DRILLOG HA GYRO SURVEY CALCULATIONS

Filename: gyro survey.ut
 Minimum Curvature Method
 Report Date/Time: 1/21/2013 / 12:15

Vaughn Energy Services
 Midland, Texas
 432-563-5444

Surveyor: Tim Dillon

Mimosa 24 Federal Com No 001H / API 30-015-40626

Measured Depth FT	Incl Angle Deg	Drift Direction Deg	TVD FT	+N/-S FT	+E/-W FT	Vertical Section FT	Closure Distance FT	Closure Direction Deg	Dogleg Severity Deg/100
0.00	0.00	0.00	0.00	0.00	0.00	0.00	0.00	0.00	****
100.00	0.19	236.26	100.00	-0.09	-0.14	-0.11	0.16	236.26	0.19
200.00	0.19	213.90	200.00	-0.32	-0.37	-0.28	0.49	228.69	0.07
300.00	0.24	221.66	300.00	-0.62	-0.60	-0.44	0.86	224.11	0.06
400.00	0.26	225.57	400.00	-0.93	-0.90	-0.65	1.30	223.97	0.03
500.00	0.49	226.27	500.00	-1.39	-1.37	-1.01	1.95	224.66	0.23
600.00	0.81	239.66	599.99	-2.04	-2.29	-1.75	3.07	228.31	0.35
700.00	0.87	241.06	699.98	-2.77	-3.57	-2.81	4.51	232.20	0.06
800.00	0.90	241.46	799.97	-3.51	-4.92	-3.95	6.04	234.50	0.03
900.00	1.39	209.52	899.95	-4.94	-6.20	-4.87	7.93	231.48	0.79
1000.00	1.40	213.41	999.92	-7.01	-7.47	-5.61	10.25	226.82	0.09
1100.00	1.47	219.42	1099.89	-9.02	-8.96	-6.58	12.71	224.81	0.17
1200.00	1.43	219.94	1199.85	-10.96	-10.57	-7.69	15.23	223.96	0.04
1300.00	1.30	211.75	1299.83	-12.89	-11.97	-8.60	17.59	222.89	0.23
1400.00	1.13	210.13	1399.80	-14.70	-13.06	-9.23	19.66	221.62	0.18
1500.00	1.17	208.19	1499.78	-16.45	-14.04	-9.77	21.62	220.47	0.06
1600.00	0.92	209.56	1599.77	-18.05	-14.92	-10.25	23.42	219.57	0.25
1700.00	0.34	163.75	1699.76	-19.04	-15.23	-10.32	24.38	218.66	0.73
1800.00	0.25	120.43	1799.76	-19.43	-14.96	-9.96	24.52	217.59	0.23



A Schlumberger Company



Devon Energy, Inc.

Eddy County (NAD83)

Mimosa 24 Federal

#1H

OH

Design: OH

Pathfinder X&Y Report

05 February, 2013





A Schlumberger Company

Pathfinder
Pathfinder X&Y Report



Company: Devon Energy, Inc.
Project: Eddy County (NAD83)
Site: Mimosa 24 Federal
Well: #1H
Wellbore: IOH
Design: OH

Local Co-ordinate Reference: Well #1H
TVD Reference: KB = 26 @ 3563.5usft (H&P 300)
MD Reference: KB = 26 @ 3563.5usft (H&P 300)
North Reference: Grid
Survey Calculation Method: Minimum Curvature
Database: EDM 5000.1 Single User Db

Project: Eddy County (NAD83)

Map System: US State Plane 1983
Geo Datum: North American Datum 1983
Map Zone: New Mexico Eastern Zone
System Datum: Mean Sea Level

Site: Mimosa 24 Federal

Site Position: Northing: 601,165.150 usft Latitude: 32.651643
From: Map Easting: 696,100.350 usft Longitude: -103.830493
Position Uncertainty: 0.0 usft Slot Radius: 13-3/16 " Grid Convergence: 0.27 °

Well: #1H

Well Position: +N-S 0.0 usft Northing: 601,165.150 usft Latitude: 32.651643
+E-W 0.0 usft Easting: 696,100.350 usft Longitude: -103.830493
Position Uncertainty: 0.0 usft Wellhead Elevation: usft Ground Level: 3,537.5 usft

Wellbore: OH

Magnetics	Model Name	Sample Date	Declination (°)	Dip Angle (°)	Field Strength (nT)
	IGRF200510	4/2/2012	7.63	60.54	48,804

Design: OH

Audit Notes:
Version: 1.0 Phase: ACTUAL Tie On Depth: 0.0

Vertical Section:	Depth From (TVD) (usft)	+N-S (usft)	+E-W (usft)	Direction (°)
	0.0	0.0	0.0	87.39



A Schlumberger Company

Pathfinder
Pathfinder X&Y Report



Company:	Devon Energy, Inc.	Local Co-ordinate Reference:	Well #1H
Project:	Eddy County (NAD83)	TVD Reference:	KB = 26 @ 3563.5usft (H&P 300)
Site:	Mimosa 24 Federal	MD Reference:	KB = 26 @ 3563.5usft (H&P 300)
Well:	#1H	North Reference:	Grid
Wellbore:	OH	Survey Calculation Method:	Minimum Curvature
Design:	OH	Database:	EDM 5000.1 Single User Db

From (usft)	To (usft)	Survey (Wellbore)	Tool Name	Description
100.0	8,600.0	Gyro #1 (OH)	NS-GYRO-MS	North sensing gyrocompassing m/s
8,773.0	13,679.0	MWD #2 (OH)	MWD	MWD - Standard

MD (usft)	Inc (°)	Azi (azimuth) (°)	TVD (usft)	TVDSS (usft)	N/S (usft)	E/W (usft)	V. Sec (usft)	DLeg (°/100usft)	Northing (usft)	Easting (usft)
0.0	0.00	0.00	0.0	-3,563.5	0.0	0.0	0.0	0.00	601,165.15	696,100.35
100.0	0.19	236.26	100.0	-3,463.5	-0.1	-0.1	-0.1	0.19	601,165.06	696,100.21
200.0	0.19	213.90	200.0	-3,363.5	-0.3	-0.4	-0.4	0.07	601,164.83	696,099.98
300.0	0.24	221.66	300.0	-3,263.5	-0.6	-0.6	-0.6	0.06	601,164.53	696,099.75
400.0	0.26	225.57	400.0	-3,163.5	-0.9	-0.9	-0.9	0.03	601,164.22	696,099.45
500.0	0.49	226.27	500.0	-3,063.5	-1.4	-1.4	-1.4	0.23	601,163.76	696,098.98
600.0	0.81	239.66	600.0	-2,963.5	-2.0	-2.3	-2.4	0.35	601,163.11	696,098.06
700.0	0.87	241.06	700.0	-2,863.5	-2.8	-3.6	-3.7	0.06	601,162.39	696,096.78
800.0	0.90	241.46	800.0	-2,763.5	-3.5	-4.9	-5.1	0.03	601,161.64	696,095.43
900.0	1.39	209.52	899.9	-2,663.6	-4.9	-6.2	-6.4	0.79	601,160.21	696,094.14
1,000.0	1.40	213.41	999.9	-2,563.6	-7.0	-7.5	-7.8	0.10	601,158.14	696,092.87
1,100.0	1.47	219.42	1,099.9	-2,463.6	-9.0	-9.0	-9.4	0.17	601,156.13	696,091.39
1,200.0	1.43	219.94	1,199.9	-2,363.6	-11.0	-10.6	-11.1	0.04	601,154.18	696,089.77
1,300.0	1.30	211.75	1,299.8	-2,263.7	-12.9	-12.0	-12.6	0.23	601,152.26	696,088.37
1,400.0	1.13	210.13	1,399.8	-2,163.7	-14.7	-13.1	-13.7	0.17	601,150.44	696,087.28
1,500.0	1.17	208.19	1,499.8	-2,063.7	-16.5	-14.0	-14.8	0.06	601,148.69	696,086.30
1,600.0	0.92	209.56	1,599.8	-1,963.7	-18.1	-14.9	-15.7	0.25	601,147.09	696,085.42
1,700.0	0.34	163.75	1,699.8	-1,863.7	-19.0	-15.2	-16.1	0.73	601,146.11	696,085.11
1,800.0	0.25	120.43	1,799.8	-1,763.7	-19.4	-15.0	-15.8	0.23	601,145.71	696,085.38
1,900.0	0.76	53.96	1,899.8	-1,663.7	-19.2	-14.2	-15.1	0.70	601,145.99	696,086.11
2,000.0	0.64	63.22	1,999.7	-1,563.8	-18.5	-13.2	-14.0	0.16	601,146.63	696,087.14



A Schlumberger Company

Pathfinder
Pathfinder X&Y Report



Company: Devon Energy, Inc.
Project: Eddy County (NAD83)
Site: Mimoso 24 Federal
Well: #1H
Wellbore: OH
Design: OH

Local Co-ordinate Reference: Well #1H
TVD Reference: KB = 26 @ 3563.5usft (H&P 300)
MD Reference: KB = 26 @ 3563.5usft (H&P 300)
North Reference: Grid
Survey Calculation Method: Minimum Curvature
Database: EDM 5000.1 Single User Db

MD (usft)	Inc. (°)	Azi (azimuth) (°)	TVD (usft)	TVDSS (usft)	N/S (usft)	E/W (usft)	V. Sec (usft)	DLeg (°/100usft)	Northing (usft)	Easting (usft)
2,100.0	1.30	44.09	2,099.7	-1,463.8	-17.4	-11.9	-12.7	0.73	601,147.70	696,088.43
2,200.0	1.42	50.82	2,199.7	-1,363.8	-15.9	-10.2	-10.9	0.20	601,149.30	696,090.18
2,300.0	1.37	53.69	2,299.7	-1,263.8	-14.4	-8.2	-8.9	0.09	601,150.79	696,092.10
2,400.0	1.08	64.72	2,399.7	-1,163.8	-13.3	-6.4	-7.0	0.37	601,151.90	696,093.92
2,500.0	0.79	54.38	2,499.6	-1,063.9	-12.4	-5.0	-5.6	0.33	601,152.70	696,095.33
2,600.0	0.54	73.21	2,599.6	-963.9	-11.9	-4.0	-4.5	0.33	601,153.24	696,096.34
2,700.0	0.53	76.16	2,699.6	-863.9	-11.7	-3.1	-3.6	0.03	601,153.49	696,097.24
2,800.0	0.49	87.83	2,799.6	-763.9	-11.5	-2.2	-2.8	0.11	601,153.61	696,098.12
2,900.0	0.69	79.96	2,899.6	-663.9	-11.4	-1.2	-1.7	0.22	601,153.74	696,099.14
3,000.0	0.94	78.87	2,999.6	-563.9	-11.2	0.2	-0.3	0.25	601,154.00	696,100.54
3,100.0	0.97	77.91	3,099.6	-463.9	-10.8	1.8	1.3	0.03	601,154.33	696,102.17
3,200.0	0.70	86.15	3,199.6	-363.9	-10.6	3.3	2.8	0.29	601,154.55	696,103.61
3,300.0	0.81	93.36	3,299.6	-263.9	-10.6	4.6	4.1	0.15	601,154.55	696,104.92
3,400.0	0.79	110.42	3,399.6	-163.9	-10.9	5.9	5.4	0.24	601,154.27	696,106.27
3,500.0	0.90	113.65	3,499.6	-63.9	-11.4	7.3	6.8	0.12	601,153.71	696,107.64
3,600.0	1.03	139.39	3,599.5	36.0	-12.4	8.6	8.0	0.45	601,152.72	696,108.94
3,700.0	0.87	136.74	3,699.5	136.0	-13.7	9.7	9.1	0.17	601,151.48	696,110.05
3,800.0	1.42	165.42	3,799.5	236.0	-15.4	10.5	9.8	0.78	601,149.73	696,110.88
3,900.0	1.22	162.35	3,899.5	336.0	-17.6	11.2	10.4	0.21	601,147.52	696,111.52
4,000.0	0.85	158.31	3,999.5	436.0	-19.3	11.8	10.9	0.38	601,145.81	696,112.11
4,100.0	0.62	154.03	4,099.5	536.0	-20.5	12.3	11.3	0.24	601,144.64	696,112.62
4,200.0	0.26	146.28	4,199.5	636.0	-21.2	12.6	11.7	0.36	601,143.96	696,112.99
4,300.0	0.21	118.34	4,299.5	736.0	-21.5	12.9	11.9	0.12	601,143.69	696,113.27
4,400.0	0.42	116.98	4,399.5	836.0	-21.7	13.4	12.4	0.21	601,143.43	696,113.76
4,500.0	0.24	101.17	4,499.4	935.9	-21.9	13.9	12.9	0.20	601,143.23	696,114.29
4,600.0	0.44	99.72	4,599.4	1,035.9	-22.0	14.5	13.5	0.20	601,143.12	696,114.88
4,700.0	0.41	84.70	4,699.4	1,135.9	-22.1	15.3	14.2	0.12	601,143.09	696,115.61



A Schlumberger Company

Pathfinder
Pathfinder X&Y Report



Company: Devon Energy, Inc.
Project: Eddy County (NAD83)
Site: Mimosa 24 Federal
Well: #1H
Wellbore: OH
Design: OH

Local Co-ordinate Reference
TVD Reference:
MD Reference:
North Reference:
Survey Calculation Method:
Database:

Well #1H
KB = 26 @ 3563.5usft (H&P 300)
KB = 26 @ 3563.5usft (H&P 300)
Grid
Minimum Curvature
EDM 5000.1 Single User Db

Survey

MD (usft)	Inc (°)	Azi (azimuth) (°)	TVD (usft)	TVDSS (usft)	N/S (usft)	E/W (usft)	V. Sec (usft)	DLeg ("/100usft)	Northing (usft)	Easting (usft)
4,800.0	0.27	89.48	4,799.4	1,235.9	-22.0	15.9	14.8	0.14	601,143.12	696,116.20
4,900.0	0.18	52.32	4,899.4	1,335.9	-21.9	16.2	15.2	0.17	601,143.22	696,116.56
5,000.0	0.31	66.33	4,999.4	1,435.9	-21.7	16.6	15.6	0.14	601,143.43	696,116.94
5,100.0	0.50	23.06	5,099.4	1,535.9	-21.2	17.0	16.0	0.35	601,143.94	696,117.35
5,200.0	1.40	11.99	5,199.4	1,635.9	-19.6	17.4	16.5	0.91	601,145.53	696,117.78
5,300.0	1.47	3.93	5,299.4	1,735.9	-17.1	17.8	17.0	0.21	601,148.01	696,118.12
5,400.0	1.35	0.79	5,399.4	1,835.9	-14.7	17.9	17.2	0.14	601,150.47	696,118.23
5,500.0	0.98	357.63	5,499.3	1,935.8	-12.7	17.9	17.3	0.38	601,152.50	696,118.21
5,600.0	1.23	0.37	5,599.3	2,035.8	-10.7	17.8	17.3	0.26	601,154.43	696,118.18
5,700.0	1.13	2.76	5,699.3	2,135.8	-8.7	17.9	17.5	0.11	601,156.48	696,118.23
5,800.0	1.16	6.60	5,799.3	2,235.8	-6.7	18.0	17.7	0.08	601,158.47	696,118.40
5,900.0	0.98	6.85	5,899.3	2,335.8	-4.8	18.3	18.0	0.18	601,160.33	696,118.61
6,000.0	0.85	3.86	5,999.3	2,435.8	-3.2	18.4	18.3	0.14	601,161.92	696,118.77
6,100.0	0.57	26.66	6,099.2	2,535.7	-2.0	18.7	18.6	0.39	601,163.10	696,119.04
6,200.0	0.66	20.28	6,199.2	2,635.7	-1.1	19.1	19.0	0.11	601,164.09	696,119.46
6,300.0	0.63	26.99	6,299.2	2,735.7	0.0	19.6	19.5	0.08	601,165.12	696,119.91
6,400.0	0.46	34.37	6,399.2	2,835.7	0.8	20.0	20.1	0.18	601,165.94	696,120.39
6,500.0	0.52	41.40	6,499.2	2,935.7	1.5	20.6	20.6	0.08	601,166.61	696,120.91
6,600.0	0.28	32.61	6,599.2	3,035.7	2.0	21.0	21.1	0.25	601,167.16	696,121.35
6,700.0	0.13	356.91	6,699.2	3,135.7	2.3	21.1	21.2	0.19	601,167.48	696,121.47
6,800.0	0.27	311.51	6,799.2	3,235.7	2.6	20.9	21.0	0.20	601,167.75	696,121.29
6,900.0	0.97	281.30	6,899.2	3,335.7	2.9	19.9	20.0	0.75	601,168.07	696,120.28
7,000.0	0.98	283.83	6,999.2	3,435.7	3.3	18.3	18.4	0.04	601,168.44	696,118.62
7,100.0	0.50	272.94	7,099.2	3,535.7	3.5	17.0	17.1	0.50	601,168.66	696,117.36
7,200.0	0.48	301.55	7,199.2	3,635.7	3.8	16.2	16.4	0.24	601,168.91	696,116.56
7,300.0	0.50	271.93	7,299.2	3,735.7	4.0	15.4	15.6	0.25	601,169.14	696,115.77
7,400.0	0.58	283.59	7,399.2	3,835.7	4.1	14.5	14.7	0.14	601,169.27	696,114.84



A Schlumberger Company

Pathfinder
Pathfinder X&Y Report



Company: Devon Energy, Inc.
 Project: Eddy County (NAD83)
 Site: Mimosas 24 Federal
 Well: #1H
 Wellbore: OH
 Design: OH

Local Co-ordinate Reference: Well #1H
 TVD Reference: KB = 26 @ 3563.5usft (H&P 300)
 MD Reference: KB = 26 @ 3563.5usft (H&P 300)
 North Reference: Grid
 Survey Calculation Method: Minimum Curvature
 Database: EDM 5000.1 Single User Db

Survey

MD (usft)	Inc (°)	Azi (azimuth) (°)	TVD (usft)	TVDSS (usft)	N/S (usft)	E/W (usft)	V. Sec (usft)	DLeg (°/100usft)	Northing (usft)	Easting (usft)
7,500.0	0.30	263.05	7,499.2	3,935.7	4.2	13.7	13.9	0.32	601,169.36	696,114.09
7,600.0	0.49	240.08	7,599.2	4,035.7	4.0	13.1	13.3	0.24	601,169.12	696,113.46
7,700.0	1.15	197.69	7,699.2	4,135.7	2.8	12.4	12.5	0.85	601,167.95	696,112.78
7,800.0	1.43	183.90	7,799.1	4,235.6	0.6	12.0	12.1	0.42	601,165.75	696,112.39
7,900.0	1.54	184.11	7,899.1	4,335.6	-2.0	11.9	11.8	0.11	601,163.16	696,112.21
8,000.0	1.51	189.77	7,999.1	4,435.6	-4.6	11.5	11.3	0.15	601,160.52	696,111.89
8,100.0	1.74	215.33	8,099.0	4,535.5	-7.2	10.4	10.1	0.75	601,157.98	696,110.79
8,200.0	2.20	215.59	8,199.0	4,635.5	-10.0	8.4	8.0	0.46	601,155.18	696,108.80
8,300.0	2.49	212.96	8,298.9	4,735.4	-13.3	6.1	5.5	0.31	601,151.80	696,106.50
8,400.0	2.45	210.54	8,398.8	4,835.3	-17.0	3.9	3.1	0.11	601,148.14	696,104.23
8,500.0	2.51	210.67	8,498.7	4,935.2	-20.7	1.7	0.7	0.06	601,144.41	696,102.03
8,600.0	2.46	205.26	8,598.6	5,035.1	-24.6	-0.4	-1.5	0.24	601,140.59	696,099.99
KOP - 8600.0 'MD, 8598.6 'TVD, -24.6 'N, -0.4 'E										
8,773.0	13.72	72.40	8,770.1	5,206.6	-21.7	17.7	16.7	8.96	601,143.45	696,118.08
8,805.0	16.88	76.70	8,801.0	5,237.5	-19.5	25.9	25.0	10.49	601,145.67	696,126.22
8,836.0	19.70	73.01	8,830.4	5,266.9	-16.9	35.2	34.4	9.83	601,148.23	696,135.60
8,868.0	22.25	76.53	8,860.3	5,296.8	-13.9	46.3	45.6	8.89	601,151.22	696,146.65
8,899.0	25.76	80.48	8,888.6	5,325.1	-11.4	58.7	58.1	12.45	601,153.70	696,159.00
8,931.0	28.31	82.33	8,917.1	5,353.6	-9.3	73.0	72.5	8.39	601,155.87	696,173.38
8,963.0	29.11	81.36	8,945.2	5,381.7	-7.1	88.3	87.8	2.89	601,158.05	696,188.60
8,994.0	30.95	80.22	8,972.0	5,408.5	-4.6	103.6	103.2	6.21	601,160.53	696,203.91
9,026.0	34.03	78.81	8,999.0	5,435.5	-1.5	120.5	120.3	9.91	601,163.67	696,220.81
9,057.0	37.20	78.37	9,024.2	5,460.7	2.1	138.2	138.1	10.26	601,167.24	696,238.50
9,089.0	39.48	78.90	9,049.3	5,485.8	6.0	157.6	157.7	7.20	601,171.15	696,257.96
9,120.0	41.42	79.16	9,072.9	5,509.4	9.8	177.4	177.6	6.28	601,174.98	696,277.71
9,152.0	44.23	79.52	9,096.3	5,532.8	13.9	198.7	199.2	8.81	601,179.00	696,299.08
9,184.0	46.69	79.87	9,118.8	5,555.3	17.9	221.2	221.8	7.73	601,183.08	696,321.52



A Schlumberger Company

Pathfinder
Pathfinder X&Y Report



Company:	Devon Energy, Inc.	Local Co-ordinate Reference:	Well #1H
Project:	Eddy County (NAD83)	TVD Reference:	KB = 26 @ 3563.5usft (H&P 300)
Site:	Mimosa 24 Federal	MD Reference:	KB = 26 @ 3563.5usft (H&P 300)
Well:	#1H	North Reference:	Grid
Wellbore:	OH	Survey Calculation Method:	Minimum Curvature
Design:	OH	Database:	EDM 5000.1 Single User Db

MD (usft)	Inc (%)	Azi (azimuth) (°)	TVD (usft)	TVDSS (usft)	N/S (usft)	E/W (usft)	V. Sec (usft)	DLeg (%/100usft)	Northing (usft)	Easting (usft)
9,215.0	50.21	80.04	9,139.3	5,575.8	22.0	244.0	244.8	11.36	601,187.12	696,344.36
9,247.0	53.73	79.96	9,159.1	5,595.6	26.4	268.8	269.7	11.00	601,191.50	696,369.18
9,278.0	57.24	79.78	9,176.6	5,613.1	30.8	294.0	295.1	11.33	601,195.99	696,394.32
9,310.0	61.11	78.73	9,193.0	5,629.5	36.0	321.0	322.3	12.42	601,201.12	696,421.31
9,341.0	64.81	78.37	9,207.1	5,643.6	41.5	348.0	349.5	11.98	601,206.60	696,448.37
9,372.0	68.32	78.11	9,219.4	5,655.9	47.2	375.9	377.6	11.35	601,212.40	696,476.21
9,404.0	71.67	77.85	9,230.4	5,666.9	53.5	405.3	407.3	10.50	601,218.66	696,505.62
9,435.0	74.04	77.93	9,239.5	5,676.0	59.7	434.2	436.5	7.65	601,224.88	696,534.58
9,466.0	77.29	77.67	9,247.2	5,683.7	66.1	463.6	466.1	10.52	601,231.22	696,563.93
9,498.0	80.55	77.32	9,253.3	5,689.8	72.9	494.2	497.0	10.24	601,238.02	696,594.58
9,529.0	83.89	76.70	9,257.5	5,694.0	79.8	524.2	527.2	10.95	601,244.92	696,624.51
9,576.0	87.76	75.91	9,261.0	5,697.5	90.9	569.7	573.2	8.40	601,256.02	696,670.04
9,670.0	87.76	76.79	9,264.6	5,701.1	113.0	661.0	665.4	0.94	601,278.19	696,761.32
9,749.0	87.49	78.63	9,267.9	5,704.4	129.8	738.1	743.2	2.35	601,294.99	696,838.44
9,843.0	87.93	80.73	9,271.7	5,708.2	146.7	830.5	836.3	2.28	601,311.81	696,930.84
9,937.0	89.08	82.46	9,274.1	5,710.6	160.4	923.4	929.8	2.21	601,325.55	697,023.79
10,031.0	90.31	85.70	9,274.6	5,711.1	170.1	1,016.9	1,023.6	3.69	601,335.24	697,117.27
LP - 10031.0 'MD, 9274.6 'TVD, 170.1 'N, 1016.9 'E										
10,126.0	90.04	88.23	9,274.3	5,710.8	175.1	1,111.8	1,118.6	2.68	601,340.27	697,212.13
10,220.0	88.02	90.08	9,275.9	5,712.4	176.5	1,205.7	1,212.5	2.91	601,341.66	697,306.10
10,314.0	87.58	90.30	9,279.5	5,716.0	176.2	1,299.7	1,306.3	0.52	601,341.34	697,400.03
10,408.0	87.49	90.51	9,283.6	5,720.1	175.5	1,393.6	1,400.1	0.24	601,340.68	697,493.94
10,502.0	88.11	89.17	9,287.2	5,723.7	175.8	1,487.5	1,494.0	1.57	601,340.94	697,587.87
10,597.0	87.85	89.20	9,290.5	5,727.0	177.1	1,582.4	1,588.9	0.28	601,342.29	697,682.80
10,691.0	89.08	89.00	9,293.0	5,729.5	178.6	1,676.4	1,682.8	1.33	601,343.77	697,776.75
10,786.0	89.96	89.40	9,293.8	5,730.3	179.9	1,771.4	1,777.7	1.02	601,345.10	697,871.74
10,881.0	89.96	89.48	9,293.9	5,730.4	180.9	1,866.4	1,872.7	0.08	601,346.02	697,966.73



A Schlumberger Company

Pathfinder
Pathfinder X&Y Report



Company: Devon Energy, Inc.
Project: Eddy County (NAD83)
Site: Mimosa 24 Federal
Well: #1H
Wellbore: OH
Design: OH

Local Co-ordinate Reference: Well #1H
TVD Reference: KB = 26 @ 3563.5usft (H&P 300)
MD Reference: KB = 26 @ 3563.5usft (H&P 300)
North Reference: Grid
Survey Calculation Method: Minimum Curvature
Database: EDM 5000.1 Single User Db

Survey

MD (usft)	Inc (°)	Azi (azimuth) (°)	TVD (usft)	TVDSS (usft)	N/S (usft)	E/W (usft)	V. Sec (usft)	DLeg (°/100usft)	Northing (usft)	Easting (usft)
10,975.0	89.25	90.01	9,294.5	5,731.0	181.3	1,960.4	1,966.6	0.94	601,346.44	698,060.73
11,070.0	88.81	90.21	9,296.2	5,732.7	181.1	2,055.4	2,061.5	0.51	601,346.26	698,155.71
11,164.0	88.64	88.26	9,298.2	5,734.7	182.4	2,149.3	2,155.4	2.08	601,347.52	698,249.68
11,259.0	88.20	87.78	9,300.9	5,737.4	185.6	2,244.2	2,250.4	0.69	601,350.80	698,344.58
11,353.0	88.20	89.18	9,303.8	5,740.3	188.1	2,338.2	2,344.3	1.49	601,353.29	698,438.50
11,448.0	87.85	89.54	9,307.1	5,743.6	189.2	2,433.1	2,439.2	0.53	601,354.35	698,533.44
11,543.0	89.52	90.06	9,309.3	5,745.8	189.5	2,528.1	2,534.1	1.84	601,354.68	698,628.41
11,630.5	90.80	89.25	9,309.0	5,745.5	190.1	2,615.6	2,621.5	1.73	601,355.20	698,715.94
Mid-Pt (MIM 24 #1H)										
11,657.0	91.19	89.01	9,308.6	5,745.1	190.5	2,642.0	2,648.0	1.73	601,355.61	698,742.40
11,751.0	90.40	90.06	9,307.3	5,743.8	191.2	2,736.0	2,741.9	1.40	601,356.37	698,836.38
11,846.0	90.57	90.85	9,306.5	5,743.0	190.5	2,831.0	2,836.8	0.85	601,355.61	698,931.38
11,940.0	90.40	90.06	9,305.7	5,742.2	189.7	2,925.0	2,930.6	0.86	601,354.87	699,025.37
12,035.0	90.57	90.33	9,304.9	5,741.4	189.4	3,020.0	3,025.5	0.34	601,354.54	699,120.37
12,129.0	90.84	90.24	9,303.7	5,740.2	188.9	3,114.0	3,119.4	0.30	601,354.08	699,214.36
12,224.0	91.89	88.04	9,301.4	5,737.9	190.4	3,209.0	3,214.3	2.57	601,355.50	699,309.31
12,319.0	92.07	88.04	9,298.2	5,734.7	193.6	3,303.9	3,309.2	0.19	601,358.75	699,404.20
12,413.0	91.01	88.83	9,295.6	5,732.1	196.2	3,397.8	3,403.2	1.41	601,361.31	699,498.13
12,508.0	89.52	89.54	9,295.2	5,731.7	197.5	3,492.8	3,498.1	1.74	601,362.67	699,593.12
12,603.0	90.22	89.01	9,295.4	5,731.9	198.7	3,587.8	3,593.1	0.92	601,363.87	699,688.11
12,697.0	92.15	88.66	9,293.5	5,730.0	200.6	3,681.7	3,687.0	2.09	601,365.78	699,782.06
12,792.0	92.51	89.18	9,289.6	5,726.1	202.4	3,776.6	3,781.9	0.67	601,367.57	699,876.97
12,886.0	91.80	90.59	9,286.1	5,722.6	202.6	3,870.5	3,875.8	1.68	601,367.76	699,970.90
12,981.0	90.57	91.29	9,284.1	5,720.6	201.0	3,965.5	3,970.6	1.49	601,366.20	700,065.86
13,076.0	90.92	92.08	9,282.9	5,719.4	198.3	4,060.5	4,065.3	0.91	601,363.40	700,160.81
13,171.0	91.45	91.82	9,280.9	5,717.4	195.0	4,155.4	4,160.0	0.62	601,360.17	700,255.74
13,265.0	91.10	91.12	9,278.8	5,715.3	192.6	4,249.3	4,253.7	0.83	601,357.76	700,349.68



A Schlumberger Company

Pathfinder
Pathfinder X&Y Report



Company:	Devon Energy, Inc.	Local Co-ordinate Reference:	Well #1H
Project:	Eddy County (NAD83)	TVD Reference:	KB = 26 @ 3563.5usft (H&P 300)
Site:	Mimosa 24 Federal	MD Reference:	KB = 26 @ 3563.5usft (H&P 300)
Well:	#1H	North Reference:	Grid
Wellbore:	OH	Survey Calculation Method:	Minimum Curvature
Design:	OH	Database:	EDM 5000.1 Single User Db

MD (usft)	Inc (%)	Azi (azimuth) (%)	TVD (usft)	TVDSS (usft)	N/S (usft)	E/W (usft)	V. Sec (usft)	DLeg (%/100usft)	Northing (usft)	Easting (usft)
13,360.0	90.92	88.92	9,277.1	5,713.6	192.6	4,344.3	4,348.6	2.32	601,357.73	700,444.66
13,455.0	91.36	87.60	9,275.2	5,711.7	195.5	4,439.2	4,443.5	1.46	601,360.61	700,539.60
13,549.0	91.01	87.87	9,273.3	5,709.8	199.2	4,533.2	4,537.5	0.47	601,364.33	700,633.50
13,599.0	90.57	88.22	9,272.6	5,709.1	200.9	4,583.1	4,587.5	1.12	601,366.03	700,683.47
13,679.0	90.57	88.22	9,271.8	5,708.3	203.4	4,663.1	4,667.5	0.00	601,368.52	700,763.43

PROJECTED BHL - 13679.0 'MD, 9271.8 'TVD, 203.4 'N, 4663.1 'E - PBHL (MIM 24 #1H)

Measured Depth (usft)	Vertical Depth (usft)	Local Coordinates		Comment
		+N/S (usft)	+E/W (usft)	
8,600.0	8,598.6	-24.6	-0.4	KOP - 8600.0 'MD, 8598.6 'TVD, -24.6 'N, -0.4 'E
10,031.0	9,274.6	170.1	1,016.9	LP - 10031.0 'MD, 9274.6 'TVD, 170.1 'N, 1016.9 'E
13,679.0	9,271.8	203.4	4,663.1	PROJECTED BHL - 13679.0 'MD, 9271.8 'TVD, 203.4 'N, 4663.1 'E

Checked By: _____ Approved By: _____ Date: _____

Devon - Mimosa 24 Federal #1H - EOW - TXT

 HEADER INFORMATION

COMPANY : Devon Energy, Inc.
 FIELD : Eddy County (NAD83)
 SITE : Mimosa 24 Federal
 WELL : #1H
 WELLPATH: OH
 DEPTHUNT: usft

 WELL INFORMATION

WELL EW MAP : 696100.35
 WELL NS MAP : 601165.15
 DATUM ELEVN : 3563.50
 VSECT ANGLE : 87.39
 VSECT NORTH : 0.00
 VSECT EAST : 0.00

 SURVEY TYPE INFORMATION

H 100.00 - 8600.00 GYRO #1 : NS-GYRO-MS
 H 8773.00 - 13679.00 MWD #2 : MWD

 SURVEY LIST

MD	INC	AZI	TVD	VSEC	N/S	E/W
0.00	0.00	0.00	0.00	0.00	0.00	0.00
100.00	0.19	236.26	100.00	-0.14	-0.09	-0.14
200.00	0.19	213.90	200.00	-0.38	-0.32	-0.37
300.00	0.24	221.66	300.00	-0.63	-0.62	-0.60
400.00	0.26	225.57	400.00	-0.94	-0.93	-0.90
500.00	0.49	226.27	500.00	-1.43	-1.39	-1.37
600.00	0.81	239.66	599.99	-2.38	-2.04	-2.29
700.00	0.87	241.06	699.98	-3.69	-2.76	-3.57
800.00	0.90	241.46	799.97	-5.07	-3.51	-4.92
900.00	1.39	209.52	899.95	-6.43	-4.94	-6.21
1000.00	1.40	213.41	999.92	-7.79	-7.01	-7.48
1100.00	1.47	219.42	1099.89	-9.37	-9.02	-8.96
1200.00	1.43	219.94	1199.85	-11.07	-10.97	-10.58
1300.00	1.30	211.75	1299.83	-12.55	-12.89	-11.98
1400.00	1.13	210.13	1399.80	-13.73	-14.71	-13.07
1500.00	1.17	208.19	1499.78	-14.78	-16.46	-14.05
1600.00	0.92	209.56	1599.77	-15.73	-18.06	-14.93
1700.00	0.34	163.75	1699.76	-16.09	-19.04	-15.24
1800.00	0.25	120.43	1799.76	-15.84	-19.44	-14.97
1900.00	0.76	53.96	1899.76	-15.10	-19.16	-14.24
2000.00	0.64	63.22	1999.75	-14.04	-18.52	-13.21
2100.00	1.30	44.09	2099.73	-12.70	-17.45	-11.92
2200.00	1.42	50.82	2199.71	-10.88	-15.85	-10.17
2300.00	1.37	53.69	2299.68	-8.89	-14.36	-8.25
2400.00	1.08	64.72	2399.65	-7.03	-13.25	-6.43
2500.00	0.79	54.38	2499.64	-5.58	-12.45	-5.02
2600.00	0.54	73.21	2599.63	-4.54	-11.91	-4.01
2700.00	0.53	76.16	2699.63	-3.63	-11.66	-3.11
2800.00	0.49	87.83	2799.62	-2.75	-11.54	-2.23
2900.00	0.69	79.96	2899.62	-1.73	-11.41	-1.21
3000.00	0.94	78.87	2999.61	-0.32	-11.15	0.19
3100.00	0.97	77.91	3099.60	1.33	-10.82	1.82
3200.00	0.70	86.15	3199.58	2.77	-10.60	3.26
3300.00	0.81	93.36	3299.58	4.09	-10.60	4.57
3400.00	0.79	110.42	3399.57	5.42	-10.88	5.92
3500.00	0.90	113.65	3499.56	6.76	-11.44	7.29
3600.00	1.03	139.39	3599.54	8.02	-12.43	8.59
3700.00	0.87	136.74	3699.53	9.07	-13.67	9.70
3800.00	1.42	165.42	3799.51	9.82	-15.42	10.53
3900.00	1.22	162.35	3899.48	10.35	-17.63	11.17
4000.00	0.85	158.31	3999.47	10.87	-19.34	11.76

		Devon	- Mimosa 24	Federal	#1H	- EOW	- TXT
4100.00	0.62	154.03	4099.46	11.33	-20.51	12.27	
4200.00	0.26	146.28	4199.45	11.66	-21.19	12.64	
4300.00	0.21	118.34	4299.45	11.93	-21.46	12.92	
4400.00	0.42	116.98	4399.45	12.41	-21.72	13.41	
4500.00	0.24	101.17	4499.45	12.93	-21.92	13.94	
4600.00	0.44	99.72	4599.45	13.51	-22.03	14.53	
4700.00	0.41	84.70	4699.45	14.24	-22.06	15.26	
4800.00	0.27	89.48	4799.44	14.84	-22.03	15.85	
4900.00	0.18	52.32	4899.44	15.20	-21.93	16.21	
5000.00	0.31	66.33	4999.44	15.58	-21.72	16.59	
5100.00	0.50	23.06	5099.44	16.02	-21.21	17.00	
5200.00	1.40	11.99	5199.42	16.52	-19.62	17.43	
5300.00	1.47	3.93	5299.39	16.97	-17.14	17.77	
5400.00	1.35	0.79	5399.36	17.19	-14.68	17.88	
5500.00	0.98	357.63	5499.34	17.26	-12.65	17.86	
5600.00	1.23	0.37	5599.32	17.32	-10.72	17.83	
5700.00	1.13	2.76	5699.30	17.47	-8.67	17.88	
5800.00	1.16	6.60	5799.28	17.72	-6.68	18.05	
5900.00	0.98	6.85	5899.26	18.03	-4.82	18.26	
6000.00	0.85	3.86	5999.25	18.25	-3.23	18.42	
6100.00	0.57	26.66	6099.24	18.58	-2.05	18.69	
6200.00	0.66	20.28	6199.24	19.04	-1.06	19.11	
6300.00	0.63	26.99	6299.23	19.54	-0.03	19.56	
6400.00	0.46	34.37	6399.23	20.05	0.79	20.04	
6500.00	0.52	41.40	6499.22	20.61	1.46	20.56	
6600.00	0.28	32.61	6599.22	21.07	2.01	21.00	
6700.00	0.13	356.91	6699.22	21.21	2.33	21.12	
6800.00	0.27	311.51	6799.22	21.04	2.60	20.94	
6900.00	0.97	281.30	6899.21	20.04	2.92	19.93	
7000.00	0.98	283.83	6999.20	18.40	3.29	18.27	
7100.00	0.50	272.94	7099.19	17.15	3.51	17.01	
7200.00	0.48	301.55	7199.19	16.37	3.76	16.21	
7300.00	0.50	271.93	7299.18	15.59	3.99	15.42	
7400.00	0.58	283.59	7399.18	14.66	4.12	14.49	
7500.00	0.30	263.05	7499.18	13.92	4.21	13.74	
7600.00	0.49	240.08	7599.17	13.28	3.97	13.11	
7700.00	1.15	197.69	7699.16	12.55	2.80	12.43	
7800.00	1.43	183.90	7799.14	12.06	0.60	12.04	
7900.00	1.54	184.11	7899.11	11.76	-1.99	11.86	
8000.00	1.51	189.77	7999.07	11.32	-4.63	11.54	
8100.00	1.74	215.33	8099.03	10.11	-7.17	10.44	
8200.00	2.20	215.59	8198.97	7.99	-9.97	8.45	
8300.00	2.49	212.96	8298.89	5.53	-13.35	6.15	
8400.00	2.45	210.54	8398.80	3.10	-17.01	3.88	
8500.00	2.51	210.67	8498.70	0.73	-20.74	1.68	
8600.00	2.46	205.26	8598.61	-1.47	-24.56	-0.36	
8773.00	13.72	72.40	8770.11	16.72	-21.70	17.73	
8805.00	16.88	76.70	8800.97	24.95	-19.48	25.87	
8836.00	19.70	73.01	8830.40	34.44	-16.92	35.25	
8868.00	22.25	76.53	8860.28	45.62	-13.93	46.30	
8899.00	25.76	80.48	8888.60	58.07	-11.45	58.65	
8931.00	28.31	82.33	8917.10	72.54	-9.28	73.03	
8963.00	29.11	81.36	8945.16	87.84	-7.10	88.25	
8994.00	30.95	80.22	8972.00	103.25	-4.62	103.56	
9026.00	34.03	78.81	8998.99	120.27	-1.48	120.46	
9057.00	37.20	78.37	9024.19	138.10	2.09	138.15	
9089.00	39.48	78.90	9049.29	157.72	6.00	157.61	
9120.00	41.42	79.16	9072.87	177.62	9.83	177.36	
9152.00	44.23	79.52	9096.34	199.16	13.85	198.73	
9184.00	46.69	79.87	9118.79	221.76	17.93	221.17	
9215.00	50.21	80.04	9139.34	244.76	21.97	244.01	
9247.00	53.73	79.96	9159.05	269.75	26.35	268.83	
9278.00	57.24	79.78	9176.62	295.07	30.84	293.97	

Devon - Mimosa 24 Federal #1H - EOW - TXT						
9310.00	61.11	78.73	9193.01	322.27	35.97	320.96
9341.00	64.81	78.37	9207.10	349.54	41.45	348.02
9372.00	68.32	78.11	9219.43	377.62	47.25	375.86
9404.00	71.67	77.85	9230.38	407.28	53.51	405.27
9435.00	74.04	77.93	9239.51	436.49	59.73	434.23
9466.00	77.29	77.67	9247.19	466.10	66.07	463.58
9498.00	80.55	77.32	9253.34	497.04	72.87	494.23
9529.00	83.89	76.70	9257.53	527.24	79.77	524.16
9576.00	87.76	75.91	9260.95	573.23	90.87	569.69
9670.00	87.76	76.79	9264.63	665.42	113.04	660.97
9749.00	87.49	78.63	9267.90	743.22	129.84	738.09
9843.00	87.93	80.73	9271.66	836.29	146.66	830.49
9937.00	89.08	82.46	9274.11	929.78	160.40	923.44
10031.00	90.31	85.70	9274.61	1023.60	170.09	1016.92
10126.00	90.04	88.23	9274.32	1118.59	175.12	1111.78
10220.00	88.02	90.08	9275.91	1212.52	176.51	1205.75
10314.00	87.58	90.30	9279.52	1306.34	176.19	1299.68
10408.00	87.49	90.51	9283.56	1400.13	175.53	1393.59
10502.00	88.11	89.17	9287.17	1493.97	175.79	1487.52
10597.00	87.85	89.20	9290.52	1588.86	177.14	1582.45
10691.00	89.08	89.00	9293.04	1682.79	178.62	1676.40
10786.00	89.96	89.40	9293.83	1777.74	179.95	1771.39
10881.00	89.96	89.48	9293.90	1872.67	180.87	1866.38
10975.00	89.25	90.01	9294.55	1966.59	181.29	1960.38
11070.00	88.81	90.21	9296.16	2061.47	181.11	2055.36
11164.00	88.64	88.26	9298.25	2155.40	182.37	2149.33
11259.00	88.20	87.78	9300.87	2250.35	185.65	2244.23
11353.00	88.20	89.18	9303.82	2344.29	188.14	2338.15
11448.00	87.85	89.54	9307.10	2439.18	189.20	2433.09
11543.00	89.52	90.06	9309.28	2534.06	189.53	2528.06
11657.00	91.19	89.01	9308.57	2647.98	190.46	2642.05
11751.00	90.40	90.06	9307.26	2741.90	191.22	2736.03
11846.00	90.57	90.85	9306.46	2836.76	190.46	2831.03
11940.00	90.40	90.06	9305.66	2930.62	189.72	2925.02
12035.00	90.57	90.33	9304.86	3025.50	189.39	3020.02
12129.00	90.84	90.24	9303.70	3119.38	188.93	3114.01
12224.00	91.89	88.04	9301.44	3214.30	190.35	3208.96
12319.00	92.07	88.04	9298.16	3309.24	193.60	3303.85
12413.00	91.01	88.83	9295.63	3403.18	196.16	3397.78
12508.00	89.52	89.54	9295.19	3498.13	197.52	3492.77
12603.00	90.22	89.01	9295.41	3593.08	198.72	3587.76
12697.00	92.15	88.66	9293.46	3687.03	200.63	3681.71
12792.00	92.51	89.18	9289.60	3781.91	202.42	3776.62
12886.00	91.80	90.59	9286.07	3875.76	202.61	3870.55
12981.00	90.57	91.29	9284.10	3970.55	201.05	3965.51
13076.00	90.92	92.08	9282.87	4065.28	198.25	4060.46
13171.00	91.45	91.82	9280.90	4159.96	195.02	4155.39
13265.00	91.10	91.12	9278.81	4253.69	192.61	4249.33
13360.00	90.92	88.92	9277.14	4348.57	192.58	4344.31
13455.00	91.36	87.60	9275.25	4443.54	195.46	4439.25
13549.00	91.01	87.87	9273.30	4537.52	199.18	4533.15
13599.00	90.57	88.22	9272.61	4587.51	200.88	4583.12
13679.00	90.57	88.22	9271.82	4667.50	203.37	4663.08

devon

Project: Eddy County (NAD83)
 Site: Mimosa 24 Federal
 Well: #1H
 Wellbore: OH
 Plan: Post Gyro Plan #4 (#1H/OH)

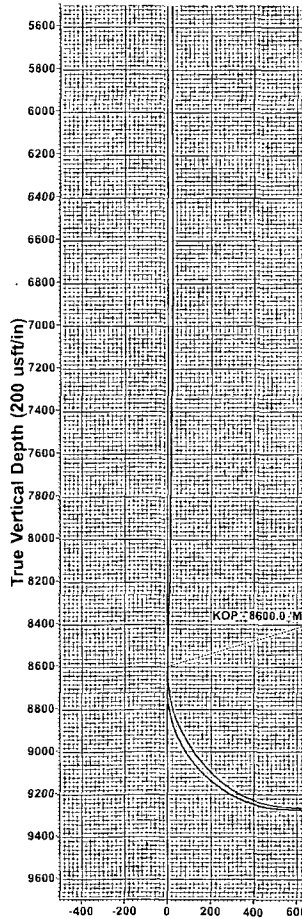
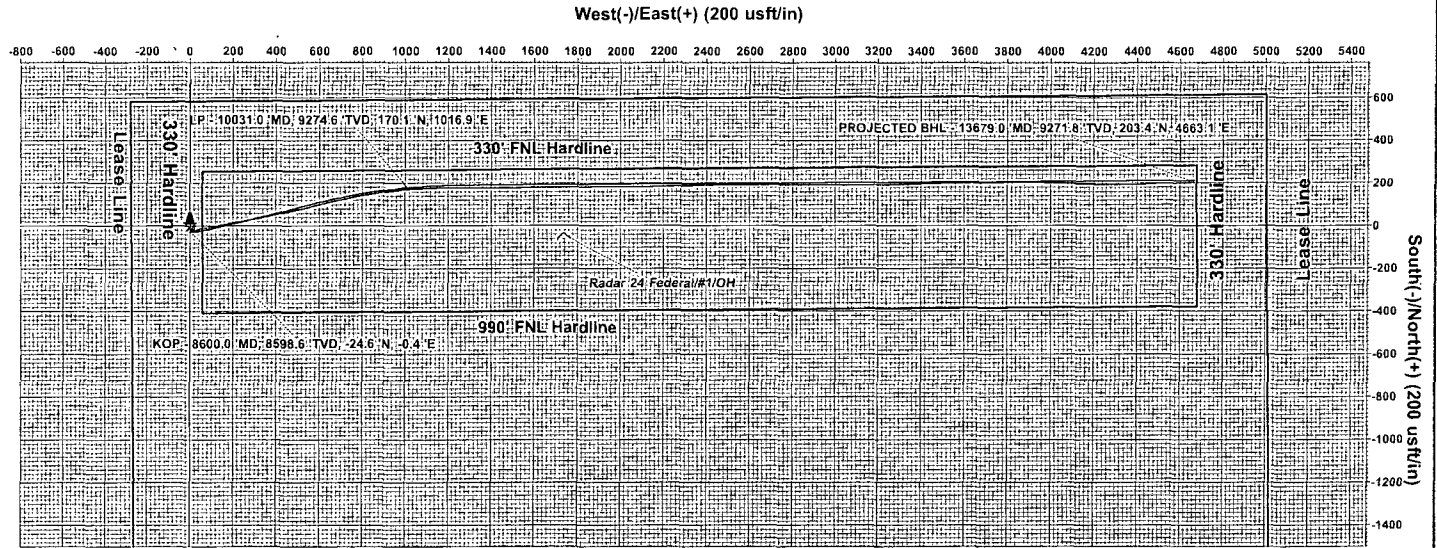


Azimuths to Grid North
 True North: -0.27°
 Magnetic North: 7.36°
 Magnetic Field
 Strength: 48803.6snT
 Dip Angle: 60.54°
 Date: 4/2/2012
 Model: IGRF200510

PATHFINDER®

A Schlumberger Company

PROJECT DETAILS: Eddy County (NAD83)
 Geodetic System: US State Plane 1983
 Datum: North American Datum 1983
 Ellipsoid: GRS 1980
 Zone: New Mexico Eastern Zone
 System Datum: Mean Sea Level
 Local North: Grid



WELL DETAILS: #1H

Ground Elevation: 3537.5
 RKB Elevation: KB = 26 @ 3563.5usft (H&P 300)
 Rig Name: H&P 300

+N/-S	+E/-W	Northing	Easting	Latitude	Longitude	Slot
0.0	0.0	601165.150	696100.350	32.851643	-103.830493	

SECTION DETAILS

Sec	MD	Inc	Azi	TVD	+N/-S	+E/-W	Dleg	TFace	VSect	Target
1	8684.6	2.32	203.38	8683.1	-27.8	-1.8	0.00	0.00	-3.1	
2	9587.9	88.90	75.32	9270.0	96.9	546.3	10.00	-128.07	550.1	
3	10303.4	88.90	89.63	9283.8	190.3	1253.7	2.00	90.15	1261.1	
4	11665.5	88.90	89.63	9310.0	199.0	2615.5	0.00	0.00	2621.9	Mid-Pt (MIM 24 #1H)
5	11779.7	91.18	89.63	9309.9	199.7	2729.7	2.00	-0.16	2736.0	
6	13716.1	91.18	89.63	9270.0	212.3	4665.6	0.00	0.00	4670.4	PBHL (MIM 24 #1H)

EOW

WELLBORE TARGET DETAILS (MAP CO-ORDINATES)

Name	TVD	+N/-S	+E/-W	Northing	Easting	Shape
PBHL (MIM 24 #1H)	9270.0	212.3	4665.6	601377.450	700765.960	Point
Mid-Pt (MIM 24 #1H)	9310.0	199.0	2615.5	601364.132	698715.874	Point

Plan: Post Gyro Plan #4 (#1H/OH)
 Created By: Sam Biffle Date: 14:22, February 05 2013
 Checked: _____ Date: _____

Rev: 001
 04/02/2012
 08:00
 08:00