

DISTRICT I
1625 N. French Dr., Hobbs, NM 88240
DISTRICT II
1301 W. Grand Avenue, Artesia, NM 88210
DISTRICT III
1000 Rio Brazos Rd., Aztec, NM 87410
DISTRICT IV
1220 S. St. Francis Dr., Santa Fe, NM 87505

State of New Mexico
Energy, Minerals and Natural Resources Department
OIL CONSERVATION DIVISION
1220 South St. Francis Dr.
Santa Fe, New Mexico 87505

RECEIVED

AUG 07 2013

Form C-102
Revised July 18, 2010

Submit one copy to appropriate
District Office

WELL LOCATION AND ACREAGE DEDICATION PLAT

X AMENDED REPORT
"As Drilled"

API Number 30-015-40951	Pool Code 96047	Pool Name Poker Lake; Delaware, SW
Property Code 306402	Property Name POKER LAKE UNIT	Well Number 393H
GRID No. 260737	Operator Name BOPCO, L.P.	Elevation 3495'

Surface Location

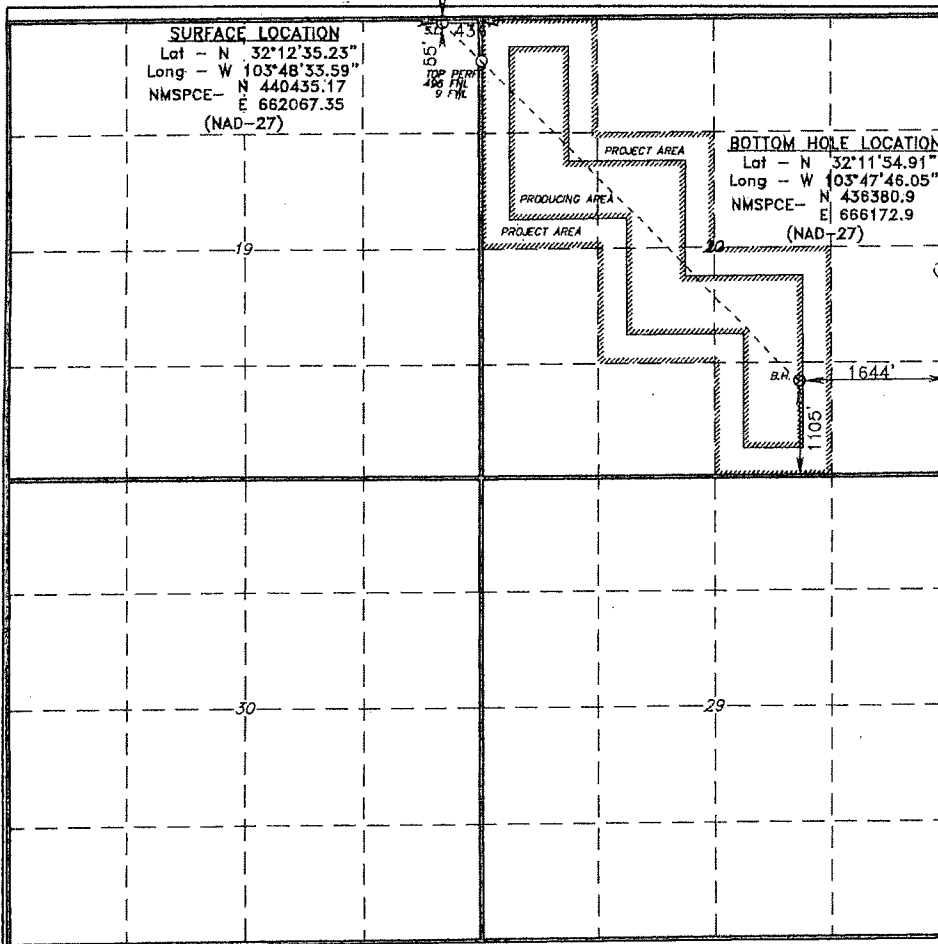
UL or lot No.	Section	Township	Range	Lot Idn	Feet from the	North/South line	Feet from the	East/West line	County
A	19	24 S	31 E		55	NORTH	435	EAST	EDDY

Bottom Hole Location If Different From Surface

UL or lot No.	Section	Township	Range	Lot Idn	Feet from the	North/South line	Feet from the	East/West line	County
O	20	24 S	31 E		1105	SOUTH	1644	EAST	EDDY

Dedicated Acres 240	Joint or Infill	Consolidation Code	Order No.
------------------------	-----------------	--------------------	-----------

NO ALLOWABLE WILL BE ASSIGNED TO THIS COMPLETION UNTIL ALL INTERESTS HAVE BEEN CONSOLIDATED
OR A NON-STANDARD UNIT HAS BEEN APPROVED BY THE DIVISION



OPERATOR CERTIFICATION

I hereby certify that the information contained herein is true and complete to the best of my knowledge and belief, and that this organization either owns a working interest or unleased mineral interest in the land including the proposed bottom hole location or has a right to drill this well at this location pursuant to a contract with an owner of such a mineral or working interest, or to a voluntary pooling agreement or a compulsory pooling order heretofore entered by the division.

Signature *Tracie J Cherry* Date *06-25-13*

Tracie J Cherry

Printed Name
tjcherry@basspet.com

Email Address

SURVEYOR CERTIFICATION

I hereby certify that the well location shown on this plat was plotted from field notes of actual surveys made by me or under my supervision and that the same is true and correct to the best of my belief.

Date Surveyed

Signature of Professional Surveyor

Professional Surveyor

Surveyor

Surveyor

Surveyor

Surveyor

Surveyor

Surveyor

Surveyor

Surveyor

Surveyor

Certificate No. Gary L. Jones 7977

BASIN SURVEYS 26960