

**District I**  
1625 N. French Dr., Hobbs, NM 88240  
Phone: (575) 393-6161 Fax: (575) 393-0720

**District II**  
811 S. First St., Artesia, NM 88210  
Phone: (575) 748-1283 Fax: (575) 748-9720

**District III**  
1000 Rio Brazos Road, Aztec, NM 87410  
Phone: (505) 334-6178 Fax: (505) 334-6170

**District IV**  
1220 S. St. Francis Dr., Santa Fe, NM 87505  
Phone: (505) 476-3460 Fax: (505) 476-3462

# State of New Mexico

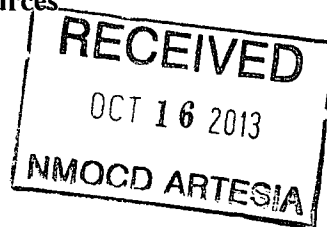
Form C-101  
Revised July 18, 2013

## Energy Minerals and Natural Resources

### Oil Conservation Division

1220 South St. Francis Dr.

Santa Fe, NM 87505



## APPLICATION FOR PERMIT TO DRILL, RE-ENTER, DEEPEN, PLUGBACK, OR ADD A ZONE

1. Operator Name and Address COG Operating LLC 2208 West Main Street Artesia, NM 88210		2. OGRID Number 229137
3. Property Code 40178	4. Property Name Myox 30 State Com	5. API Number 30-015-41735
		6. Well No 2H

### 7. Surface Location

UL - Lot	Section	Township	Range	Lot Idn	Feet from	N/S Line	Feet From	E/W Line	County
B	30	25S	28E	B	190	North	1980	East	Eddy

### 8. Proposed Bottom Hole Location

UL - Lot	Section	Township	Range	Lot Idn	Feet from	N/S Line	Feet From	E/W Line	County
O	31	25S	28E	O	330	South	1980	East	Eddy

### 9. Pool Information

Pool Name Hay Hollow; Bone Spring * North	Pool Code 30215
--	--------------------

### Additional Well Information

11. Work Type New Well	12. Well Type Oil	13. Cable/Rotary	14. Lease Type State	15. Ground Level Elevation 2994.1
16. Multiple N	17. Proposed Depth 17712'	18. Formation Bone Spring	19. Contractor	20. Spud Date 10/24/2013
Depth to Ground water		Distance from nearest fresh water well		Distance to nearest surface water

☒ We will be using a closed-loop system in lieu of lined pits

### 21. Proposed Casing and Cement Program

Type	Hole Size	Casing Size	Casing Weight/ft	Setting Depth	Sacks of Cement	Estimated TOC
Surface	17.5	13.375	48	300	315	
Intrmd	12.25	9.625	36	2300	790	
Production	7.875	5.5	17	17712	3010	2000

### Casing/Cement Program: Additional Comments

Drill 17-1/2" hole to ~300' w/ fresh water spud mud. Run 13-3/8" 48# H40 STC casing to TD and cement to surface in one stage. Will use 1" tubing and Class C w/ 2% CaCl<sub>2</sub> to cement to surface, if necessary.

Drill 12-1/4" hole to ~2300' with saturated brine water. Run 9-5/8" 36# J55 LTC casing to TD and cement to surface in one stage.

Drill 7-7/8" vertical hole, curve and lateral to 17712' with cut brine. Run 5-1/2" 17# P110 LTC casing to TD and cement in one stage bringing TOC to 2000' (300' overlap).

### 22. Proposed Blowout Prevention Program

Type	Working Pressure	Test Pressure	Manufacturer
Double Ram	3000	3000	Cameron

23. I hereby certify that the information given above is true and complete to the best of my knowledge and belief.

I further certify that I have complied with 19.15.14.9 (A) NMAC ☒ and/or 19.15.14.9 (B) NMAC ☒, if applicable.

Signature: *Mayte Reyes*

Printed name: Mayte Reyes

Title: Regulatory Analyst

E-mail Address: mreyes1@concho.com

Date: 10/15/2013

Phone: 575-748-6945

### OIL CONSERVATION DIVISION

Approved By:

*T. C. Shepard*

Title:

**"Geologist"**

Approved Date:

*10/16/2013*

Expiration Date:

*10/16/2015*

Conditions of Approval Attached

DISTRICT I  
1625 N. FRENCH DR., HOBBS, NM 88240  
Phone: (575) 393-6161 Fax: (575) 393-0720

DISTRICT II  
1301 W. GRAND AVENUE, ARTESIA, NM 88210  
Phone: (575) 748-1283 Fax: (575) 748-0720

DISTRICT III  
1000 RIO BRAZOS RD., AZTEC, NM 87410  
Phone: (505) 334-6178 Fax: (505) 334-6170

DISTRICT IV  
11685 S. ST. FRANCIS DR., SANTA FE, NM 87505  
Phone: (505) 478-3460 Fax: (505) 478-3462

State of New Mexico  
Energy, Minerals & Natural Resources Department  
**OIL CONSERVATION DIVISION**  
11885 SOUTH ST. FRANCIS DR.  
Santa Fe, New Mexico 87505

Form C-102  
Revised August 1, 2011  
Submit one copy to appropriate

☐ AMENDED REPORT

**WELL LOCATION AND ACREAGE DEDICATION PLAT**

API Number 30-015- <b>41735</b>	Pool Code <b>30215</b>	Pool Name Hay Hollow; Bone Spring, <b>North</b>
Property Code <b>40178</b>	Property Name <b>MYOX 30 STATE COM</b>	Well Number 2H
OGRID No. 229137	Operator Name <b>COG OPERATING, LLC</b>	Elevation 2994.1

**Surface Location**

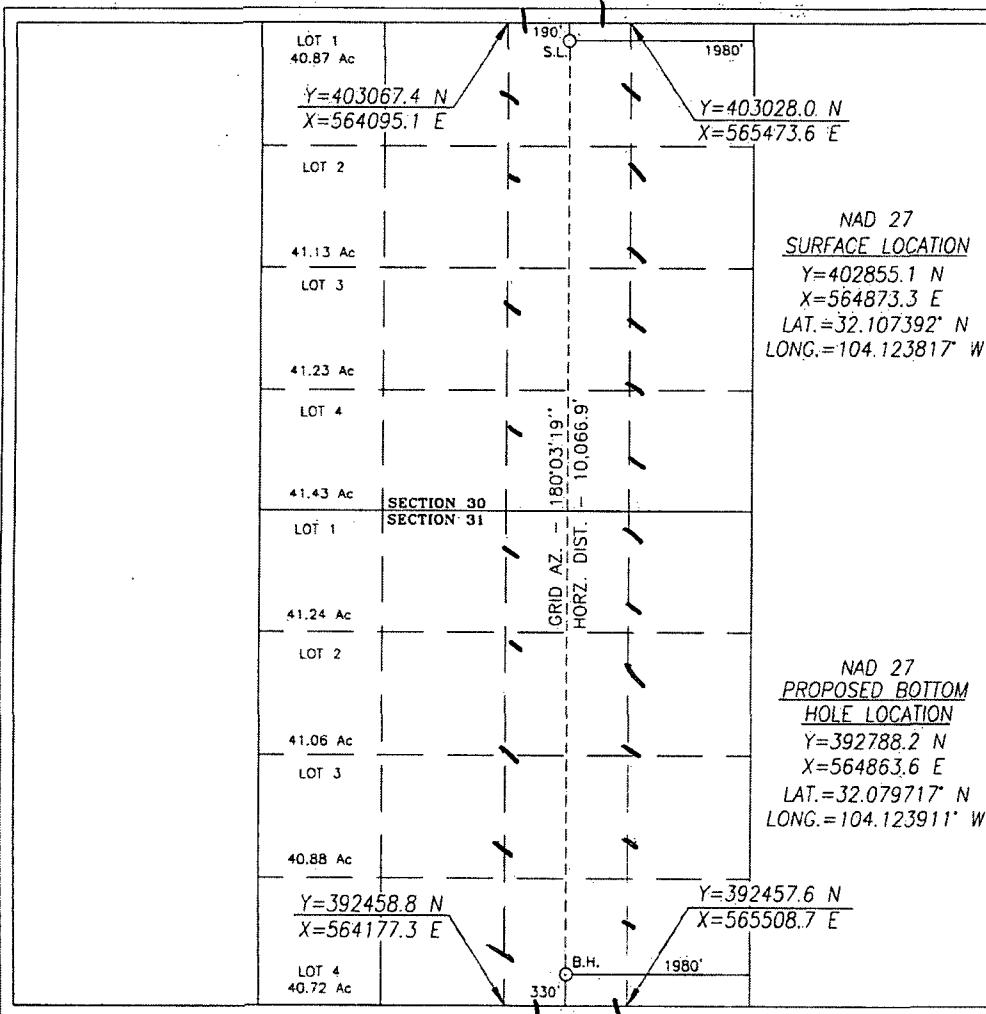
UL or lot No.	Section	Township	Range	Lot Idn	Feet from the	North/South line	Feet from the	East/West line	County
B	30	25-S	28-E		190	NORTH	1980	EAST	EDDY

**Bottom Hole Location If Different From Surface**

UL or lot No.	Section	Township	Range	Lot Idn	Feet from the	North/South line	Feet from the	East/West line	County
O	31	25-S	28-E		330	SOUTH	1980	EAST	EDDY

Dedicated Acres	Joint or Infill	Consolidation Code	Order No.
320			

NO ALLOWABLE WILL BE ASSIGNED TO THIS COMPLETION UNTIL ALL INTERESTS HAVE BEEN CONSOLIDATED  
OR A NON-STANDARD UNIT HAS BEEN APPROVED BY THE DIVISION



**OPERATOR CERTIFICATION**

I hereby certify that the information herein is true and complete to the best of my knowledge and belief, and that this organization either owns a working interest or unleased mineral interest in the land including the proposed bottom hole location or has a right to drill this well at this location pursuant to a contract with an owner of such mineral or working interest, or to a voluntary pooling agreement or a compulsory pooling order heretofore entered by the division.

*Melanie Parker* 10/15/13  
Signature Date  
*Melanie Parker*  
Printed Name  
mparker@concho.com  
E-mail Address

**SURVEYOR CERTIFICATION**

I hereby certify that the well location shown on this plat was plotted from field notes of actual surveys made by me or under my supervision, and that the same is true and correct to the best of my belief.

APRIL 5, 2013  
Date of Survey

Signature & Seal of Professional Surveyor

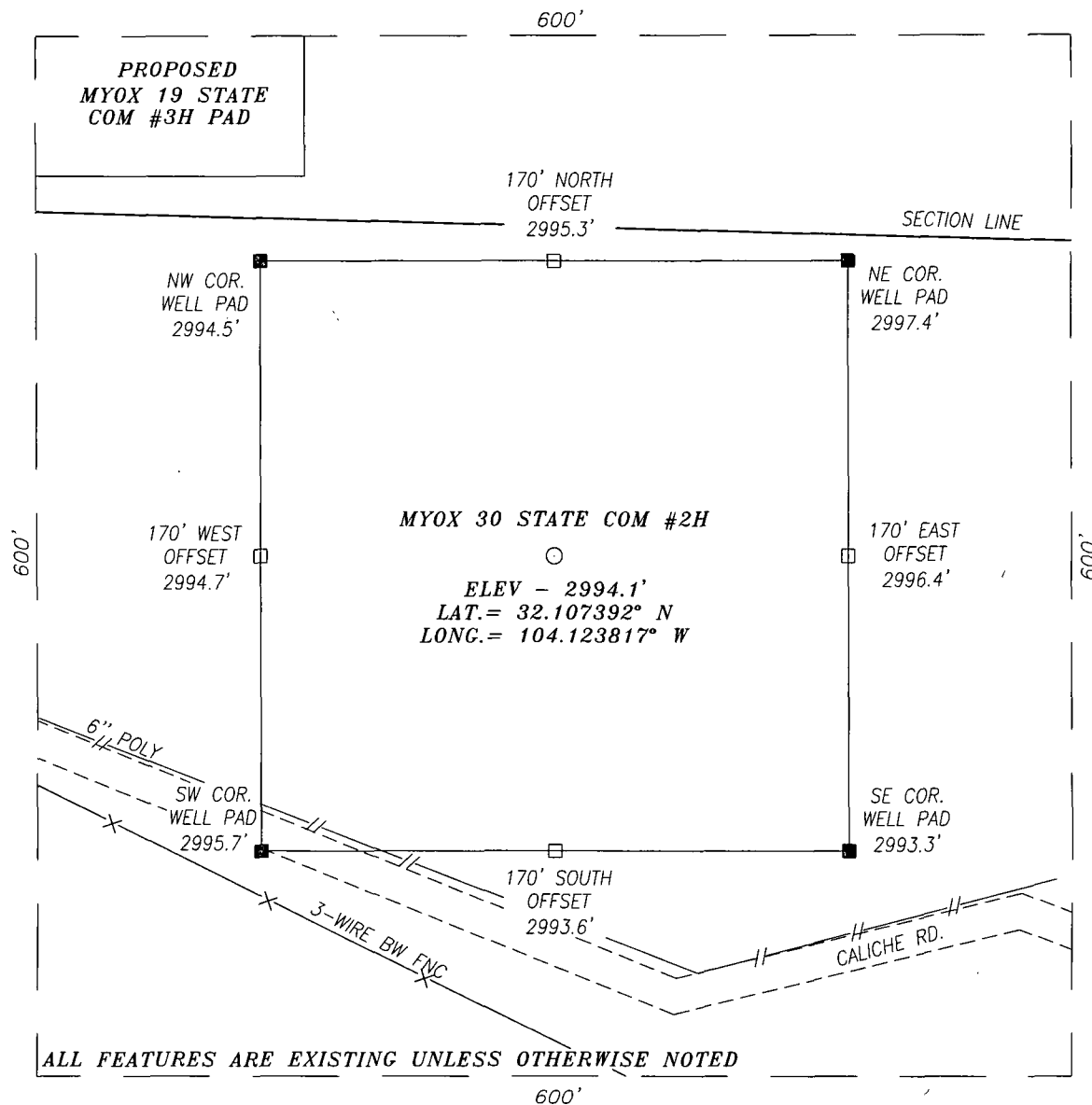
**CHAD L. HARCROW**  
**NEW MEXICO**  
**17777**  
**LICENSED PROFESSIONAL SURVEYOR**

*Chad Harcrow* 5/24/13  
Certificate No. CHAD HARCROW 17777  
W.O. # 13-306 DRAWN BY: VD

# SECTION 30, TOWNSHIP 25 SOUTH, RANGE 28 EAST, N.M.P.M.,

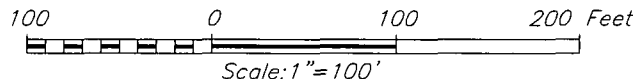
EDDY COUNTY

NEW MEXICO



## DIRECTIONS TO LOCATION

HEADING SOUTH ON HWY 285 0.9 MILES PAST MILE MARKER 10 TURN RIGHT (WEST) ONTO A CALICHE RD GO APPROX. 2.6 MILES TURN LEFT (SOUTHWEST) GO APPROX. 0.4 MILES TURN RIGHT (NORTHWEST) GO APPROX. 0.1 MILES TURN LEFT (SOUTHWEST) GO APPROX. 0.2 MILES TURN LEFT (SOUTH) GO APPROX. 0.3 MILES TURN LEFT (EAST) STAY ON WINDING ROAD FOR APPROX. 0.5 MILE AND PROPOSED WELL IS 435 FEET NORTHEAST.



## HARCROW SURVEYING, LLC

1107 WATSON, ARTESIA, N.M. 88210  
PH: (575) 513-2570 FAX: (575) 746-2158  
chad\_harcrow77@yahoo.com



## COG OPERATING, LLC

**MYOX 30 STATE COM #2H WELL**  
LOCATED 190 FEET FROM THE NORTH LINE  
AND 1980 FEET FROM THE EAST LINE OF SECTION 30,  
TOWNSHIP 25 SOUTH, RANGE 28 EAST, N.M.P.M.,  
EDDY COUNTY, NEW MEXICO

SURVEY DATE: 04/05/2013

PAGE: 1 OF 1

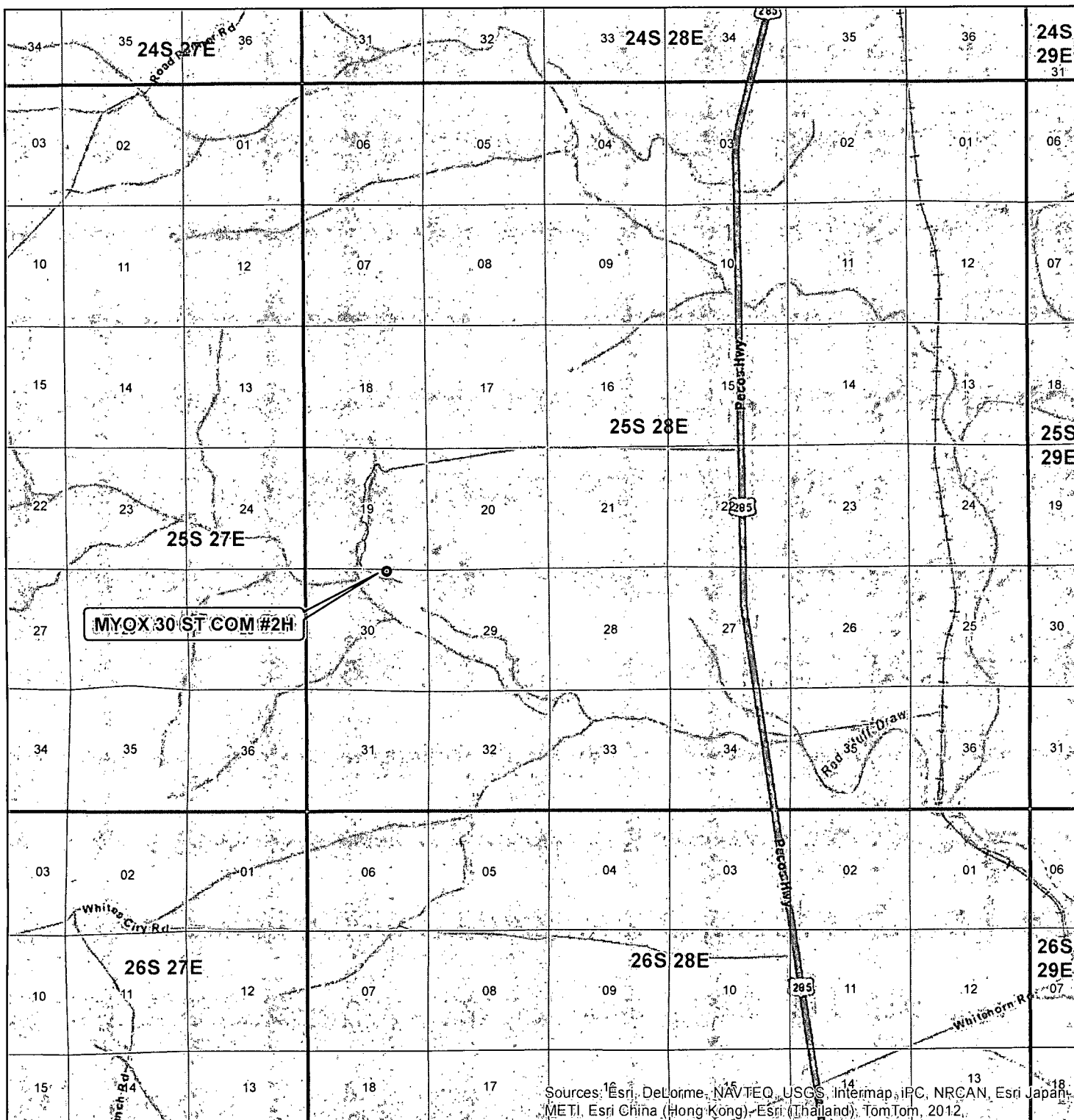
DRAFTING DATE: 04/08/2013

APPROVED BY: CH

DRAWN BY: VD

FILE: 13-166

# VICINITY MAP



Sources: Esri, DeLorme, NAVTEQ, USGS, Intermap, iPC, NRCAN, Esri Japan, METI, Esri China (Hong Kong), Esri (Thailand), TomTom, 2012.

SEC. 30, TWP. 25S, RGE. 28E  
 SURVEY: N.M.P.M.  
 COUNTY: EDDY STATE: NEW MEXICO  
 DESCRIPTION: MYOX 30 ST COM #2H  
 190' FNL & 1980' FEL

ELEVATION: 2994.1'  
 OPERATOR: COG OPERATING  
 LEASE: MYOX 30 ST COM

W.O. # 13-166



1 IN = 6,000 FT

0 0.25 0.5 0.75 1 1.25 1.5 1.75 MILES



- Well
- TOWNSHIP
- SECTION

HARCROW SURVEYING, LLC  
 1107 WATSON, ARTESIA N.M. 88210  
 PH: (575) 513-2570 FAX: (575) 746-2158  
 chad\_harcrow77@yahoo.com



MAP DATE: 4/4/2013

## Permit Conditions of Approval

API: 30-015-41735

OCD Reviewer	Condition
CSHAPARD	Once the well is spud, to prevent ground water contamination through whole or partial conduits from the surface, the operator shall drill without interruption through the fresh water zone or zones and shall immediately set in cement the water protection string