

**District I**  
1625 N. French Dr., Hobbs, NM 88240  
Phone: (575) 393-6161 Fax: (575) 393-0720

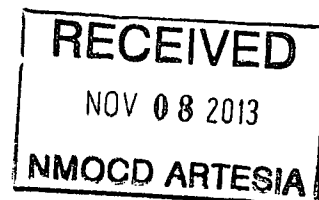
**District II**  
811 S. First St., Artesia, NM 88210  
Phone: (575) 748-1283 Fax: (575) 748-9720

**District III**  
1000 Rio Brazos Road, Aztec, NM 87410  
Phone: (505) 334-6178 Fax: (505) 334-6170

**District IV**  
1220 S. St. Francis Dr., Santa Fe, NM 87505  
Phone: (505) 476-3460 Fax: (505) 476-3462

**State of New Mexico**  
**Energy Minerals and Natural Resources**  
**Oil Conservation Division**  
**1220 South St. Francis Dr.**  
**Santa Fe, NM 87505**

Form C-101  
Revised July 18, 2013



**APPLICATION FOR PERMIT TO DRILL, RE-ENTER, DEEPEN, PLUGBACK, OR ADD A ZONE**

|   |  |   |
|---|--|---|
| <sup>1</sup> Operator Name and Address<br>COG Operating LLC<br>2208 West Main Street<br>Artesia, NM 88210 |  | <sup>2</sup> OGRID Number<br>229137     |
| <sup>4</sup> Property Code<br>40220   | <sup>3</sup> Property Name<br>Myox 6 State | <sup>5</sup> API Number<br>30-015-41788 |
|   |  | <sup>6</sup> Well No<br>3H              |

<sup>7</sup> Surface Location
 

| UL - Lot | Section | Township | Range | Lot Idn | Feet from | N/S Line | Feet From | E/W Line | County |
|----------|---------|----------|-------|---------|-----------|----------|-----------|----------|--------|
| 80       | 6       | 26S      | 28E   | 7       | 190       | North    | 1980      | West     | Eddy   |

<sup>8</sup> Proposed Bottom Hole Location
 

| UL - Lot | Section | Township | Range | Lot Idn | Feet from | N/S Line | Feet From | E/W Line | County |
|----------|---------|----------|-------|---------|-----------|----------|-----------|----------|--------|
| N        | 7       | 26S      | 28E   | N       | 330       | South    | 1980      | West     | Eddy   |

<sup>9</sup> Pool Information
 

|                                      |                    |
|--------------------------------------|--------------------|
| Pool Name<br>Hay Hollow; Bone Spring | Pool Code<br>30215 |
|--------------------------------------|--------------------|

**Additional Well Information**

|                                     |  |  |                                   |  |
|-------------------------------------|--|--|-----------------------------------|--|
| <sup>11</sup> Work Type<br>New Well | <sup>12</sup> Well Type<br>Oil         | <sup>13</sup> Cable/Rotary             | <sup>14</sup> Lease Type<br>State | <sup>15</sup> Ground Level Elevation<br>3067.9 |
| <sup>16</sup> Multiple<br>N         | <sup>17</sup> Proposed Depth<br>17819' | <sup>18</sup> Formation<br>Bone Spring | <sup>19</sup> Contractor          | <sup>20</sup> Spud Date<br>11/15/2013          |
| Depth to Ground water               |  | Distance from nearest fresh water well |                                   | Distance to nearest surface water              |

☒ We will be using a closed-loop system in lieu of lined pits

<sup>21</sup> Proposed Casing and Cement Program
 

| Type              | Hole Size | Casing Size | Casing Weight/ft | Setting Depth | Sacks of Cement | Estimated TOC |
|-------------------|-----------|-------------|------------------|---------------|-----------------|---------------|
| Surface           | 17.5      | 13.375      | 48               | 350           | 365             |               |
| Intrmd            | 12.25     | 9.625       | 36               | 2340          | 800             |               |
| Pilot Hole Plug 1 | 7.875     | -           | -                | 9350          | 140             | 9000          |
| Pilot Hole Plug 2 | 7.875     | -           | -                | 8100          | 340             | 7200          |
| Production        | 7.875     | 5.5         | 17               | 17819         | 3020            | 2040          |

**Casing/Cement Program: Additional Comments**

Drill 17-1/2" hole to ~350' w/ fresh water spud mud. Run 13-3/8" 48# H40 STC casing to TD and cement to surface in one stage. Will use 1" tubing and Class C w/ 2% CaCl<sub>2</sub> to cement to surface, if necessary.

Drill 12-1/4" hole to ~2340' with saturated brine water. Run 9-5/8" 36# J55 LTC casing to TD and cement to surface in one stage.

Drill 7-7/8" pilot hole to 9350', log and plug back with 140 sx cement plug f/ 9000' - 9350' and 340 sx cement plug f/ 7200' - 8100'.

Drill 7-7/8" curve and lateral to 17819' with cut brine. Run 5-1/2" 17# P110 LTC casing to TD and cement in one stage bringing TOC to 2040' (300' overlap).

<sup>22</sup> Proposed Blowout Prevention Program
 

| Type       | Working Pressure | Test Pressure | Manufacturer |
|------------|------------------|---------------|--------------|
| Double Ram | 3000             | 3000          | Cameron      |

|  |   |
|--|---|
| <sup>23</sup> I hereby certify that the information given above is true and complete to the best of my knowledge and belief.<br>I further certify that I have complied with 19.15.14.9 (A) NMAC <input checked="" type="checkbox"/> and/or 19.15.14.9 (B) NMAC <input checked="" type="checkbox"/> if applicable.<br>Signature: <i>Mayte Reyes</i> | <b>OIL CONSERVATION DIVISION</b>                                    |
| Printed name: Mayte Reyes  | Approved By: <i>T. C. Shepard</i><br><b>"Geologist"</b>             |
| Title: Regulatory Analyst  | Approved Date: <i>11/12/2013</i> Expiration Date: <i>11/12/2013</i> |
| E-mail Address: mreyes1@concho.com   |   |

|                 |                     |                                 |
|-----------------|---------------------|---------------------------------|
| Date: 11/8/2013 | Phone: 575-748-6945 | Conditions of Approval Attached |
|-----------------|---------------------|---------------------------------|

Form C-102  
Revised August 1, 2011  
Submit one copy to appropriate

**DISTRICT II**  
1301 W. GRAND AVENUE, ARTESIA, NM 88210  
Phone: (575) 748-1283 Fax: (575) 748-9720

**DISTRICT III**  
1000 RIO BRAZOS RD., AZTEC, NM 87410  
Phone: (505) 334-6178 Fax: (505) 334-6170

**DISTRICT IV**  
11885 S. ST. FRANCIS DR., SANTA FE, NM 87505  
Phone: (505) 478-3460 Fax: (505) 478-3462

☐ AMENDED REPORT

## WELL LOCATION AND ACREAGE DEDICATION PLAT

|                             |                                     |                                      |
|-----------------------------|-------------------------------------|--------------------------------------|
| API Number<br>30-015- 41788 | Pool Code<br>30215                  | Pool Name<br>Hay Hollow; Bone Spring |
| Property Code<br>40220      | Property Name<br>MYOX 6 STATE       | Well Number<br>3H                    |
| OGRID No.<br>229137         | Operator Name<br>COG OPERATING, LLC | Elevation<br>3067.9                  |

### Surface Location

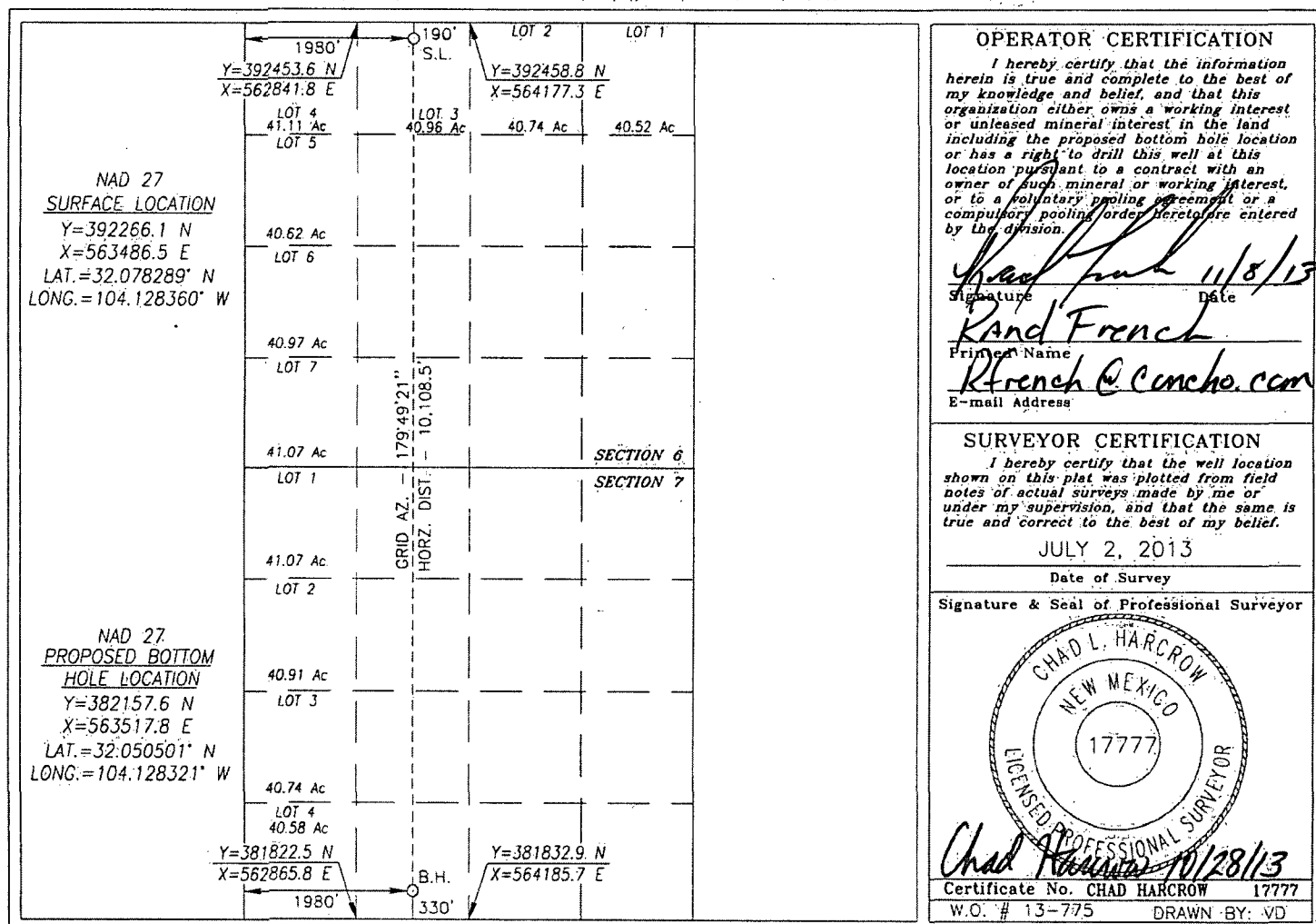
|               |         |          |       |         |               |                  |               |                |        |
|---------------|---------|----------|-------|---------|---------------|------------------|---------------|----------------|--------|
| UL or lot No. | Section | Township | Range | Lot Idn | Feet from the | North/South line | Feet from the | East/West line | County |
| 7C            | 6       | 26-S     | 28-E  |         | 190           | NORTH            | 1980          | WEST           | EDDY   |

## Bottom Hole Location If Different From Surface

|               |         |          |       |         |               |                  |               |                |        |
|---------------|---------|----------|-------|---------|---------------|------------------|---------------|----------------|--------|
| UL or lot No. | Section | Township | Range | Lot Idn | Feet from the | North/South line | Feet from the | East/West line | County |
| N.            | 7       | 26-S     | 28-E  |         | 330           | SOUTH            | 1980          | WEST           | EDDY   |

|                 |                 |                    |           |
|-----------------|-----------------|--------------------|-----------|
| Dedicated Acres | Joint or Infill | Consolidation Code | Order No. |
| 320.86          |                 |                    |           |

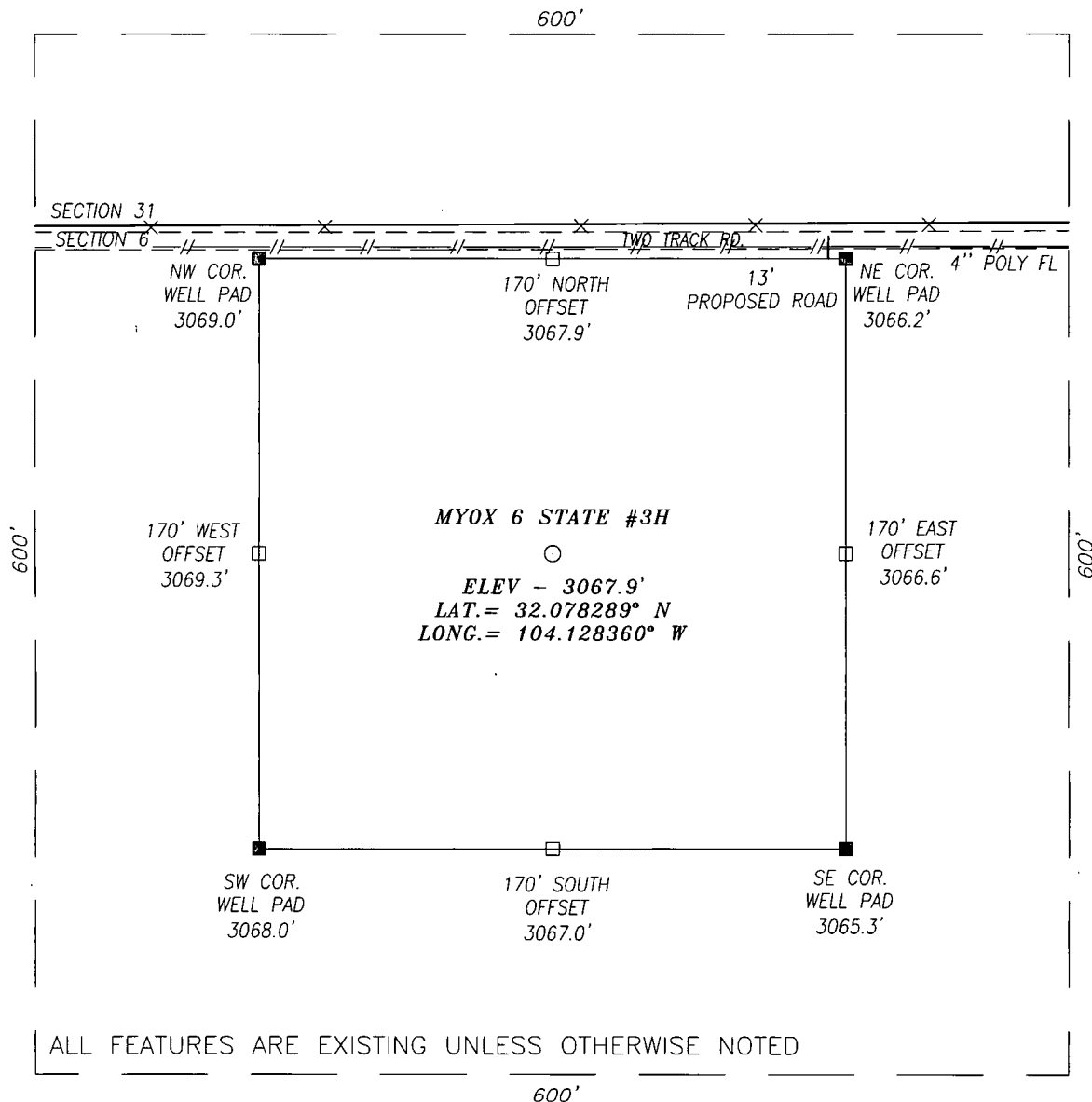
NO ALLOWABLE WILL BE ASSIGNED TO THIS COMPLETION UNTIL ALL INTERESTS HAVE BEEN CONSOLIDATED  
OR A NON-STANDARD UNIT HAS BEEN APPROVED BY THE DIVISION



# SECTION 6, TOWNSHIP 26 SOUTH, RANGE 28 EAST, N.M.P.M.,

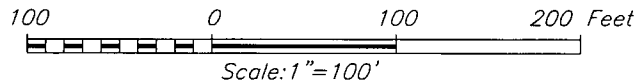
EDDY COUNTY

NEW MEXICO



## DIRECTIONS TO LOCATION

HEADING SOUTH ON HWY 285 TURN RIGHT (WEST) ONTO CR #724 (WHITES CITY RD) AND GO APPROX. 4.0 MILES; THEN TURN RIGHT (NORTH) ONTO A CALICHE RD AND GO APPROX. 1.0 MILE; THEN TURN RIGHT (EAST) ONTO A TWO TRACK RD AND GO APPROX. 0.4 MILE; THEN PROPOSED WELL IS APPROX. 190 FEET SOUTH.



## HARCROW SURVEYING, LLC

1107 WATSON, ARTESIA, N.M. 88210

PH: (575) 513-2570 FAX: (575) 746-2158

chad\_harcrow77@yahoo.com



## CONCHO COG OPERATING, LLC

MYOX 6 STATE #3H WELL  
LOCATED 190 FEET FROM THE NORTH LINE  
AND 1980 FEET FROM THE WEST LINE OF SECTION 6,  
TOWNSHIP 26 SOUTH, RANGE 28 EAST, N.M.P.M.,  
EDDY COUNTY, NEW MEXICO

SURVEY DATE: 07/02/2013

PAGE: 1 OF 1

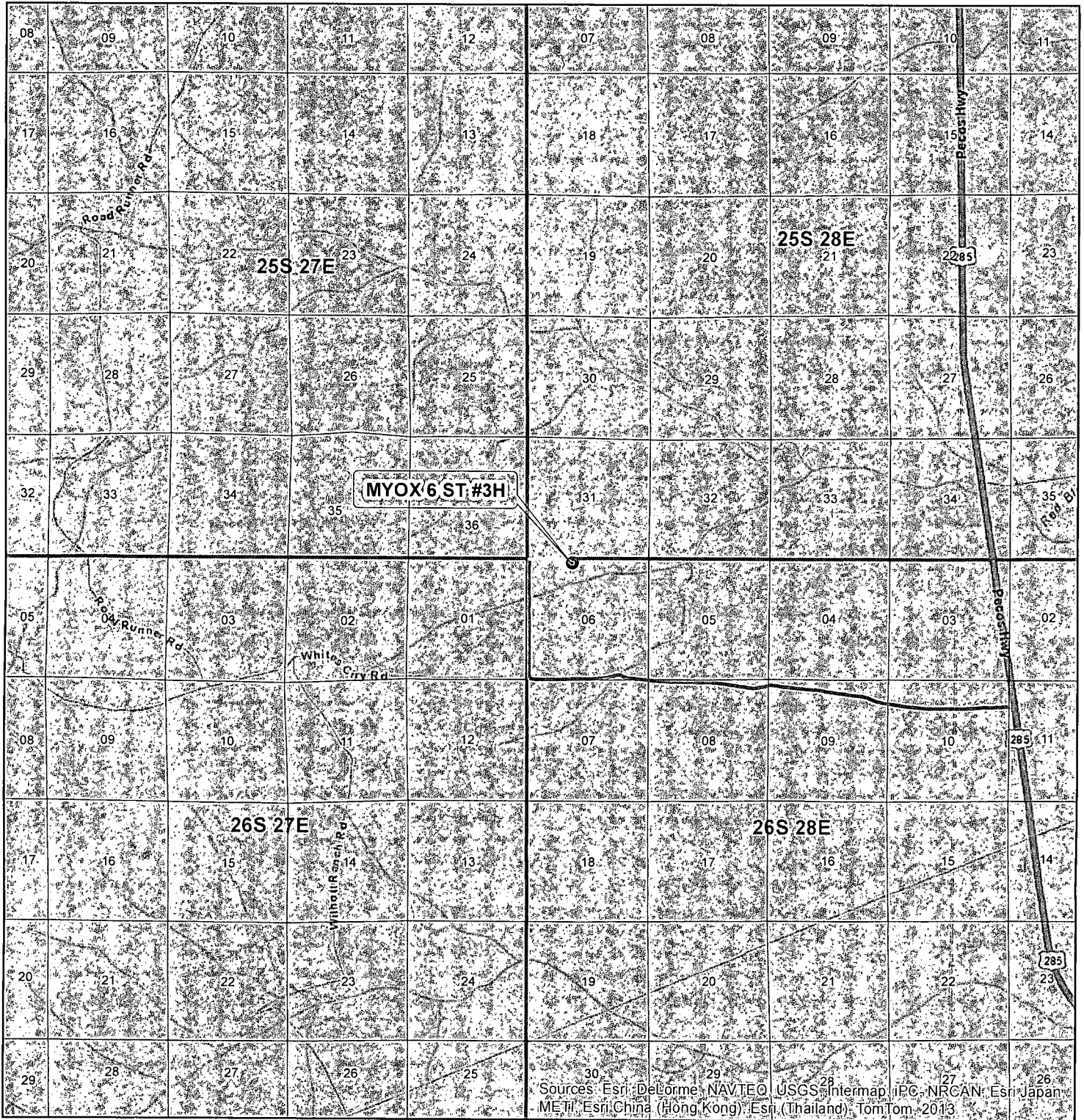
DRAFTING DATE: 07/05/2013

APPROVED BY: CH

DRAWN BY: VD

FILE: 13-775

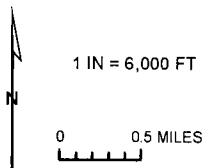
# VICINITY MAP



SEC. 6, TWP. 26S, RGE. 28E  
 SURVEY: N.M.P.M.  
 COUNTY: EDDY STATE: NEW MEXICO  
 DESCRIPTION: MYOX 6 ST #3H  
 190' FNL, 1980' FWL

ELEVATION: 3067.9'  
 OPERATOR: COG OPERATING LLC  
 LEASE: MYOX 6 ST

W.O. # 13-775



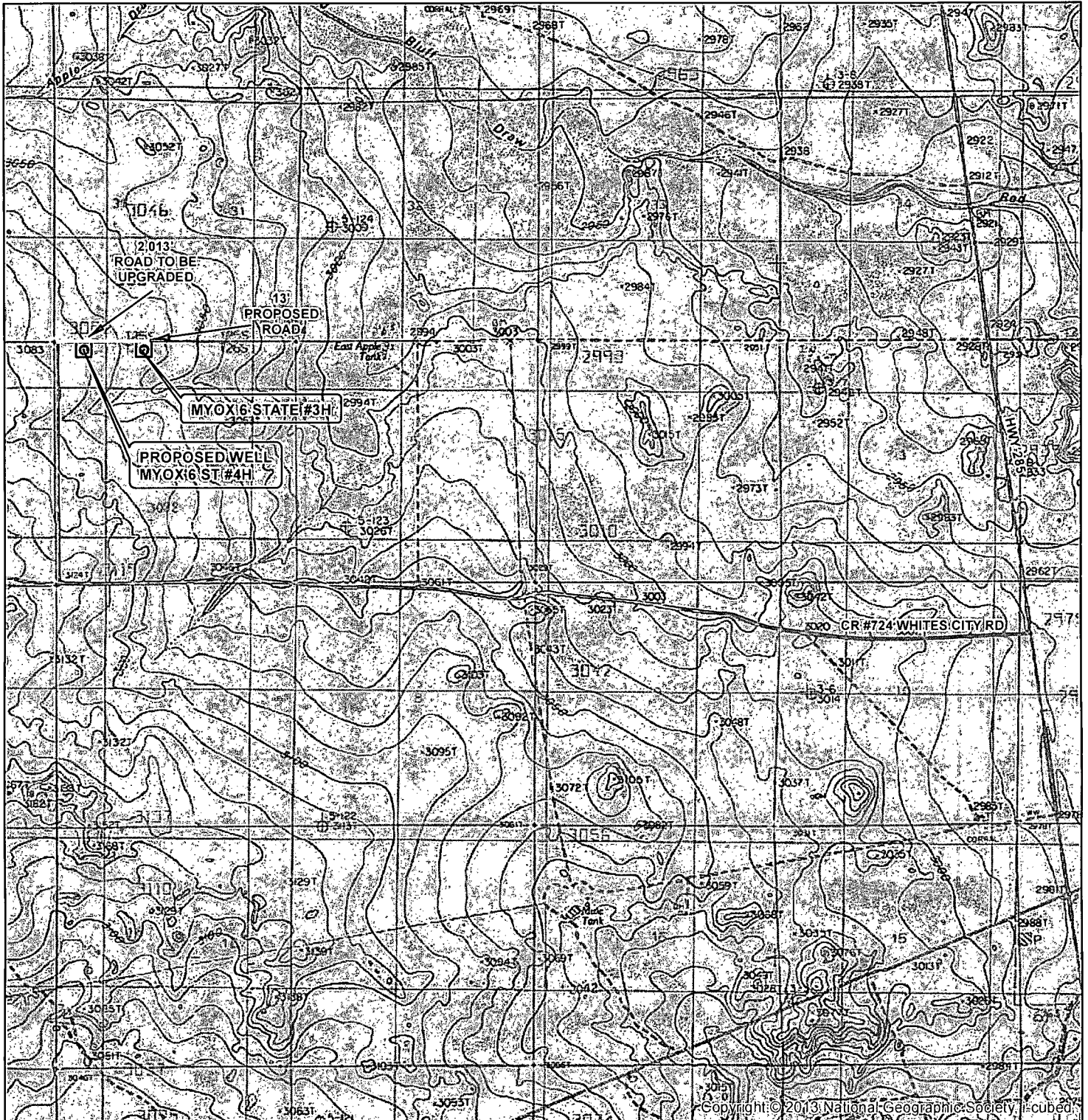
● WELL  
 □ TOWNSHIP  
 □ SECTION

HARCROW SURVEYING, LLC  
 1107 WATSON, ARTESIA N.M. 88210  
 PH: (575) 513-2570 FAX: (575) 746-2158  
 chad\_harcrow77@yahoo.com



MAP DATE: 7/10/2013

# LOCATION VERIFICATION MAP



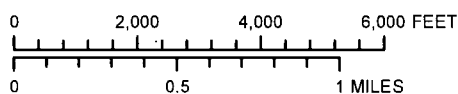
SEC. 6, TWP. 26S, RGE. 28E  
 SURVEY: N.M.P.M  
 COUNTY: EDDY STATE: NEW MEXICO  
 DESCRIPTION: MYOX 6 ST #3H  
 190' FNL, 1980' FWL

ELEVATION: 3067.9'  
 OPERATOR: COG OPERATING LLC  
 LEASE: MYOX 6 ST

W.O. # 13-775



1 IN = 3,000 FT



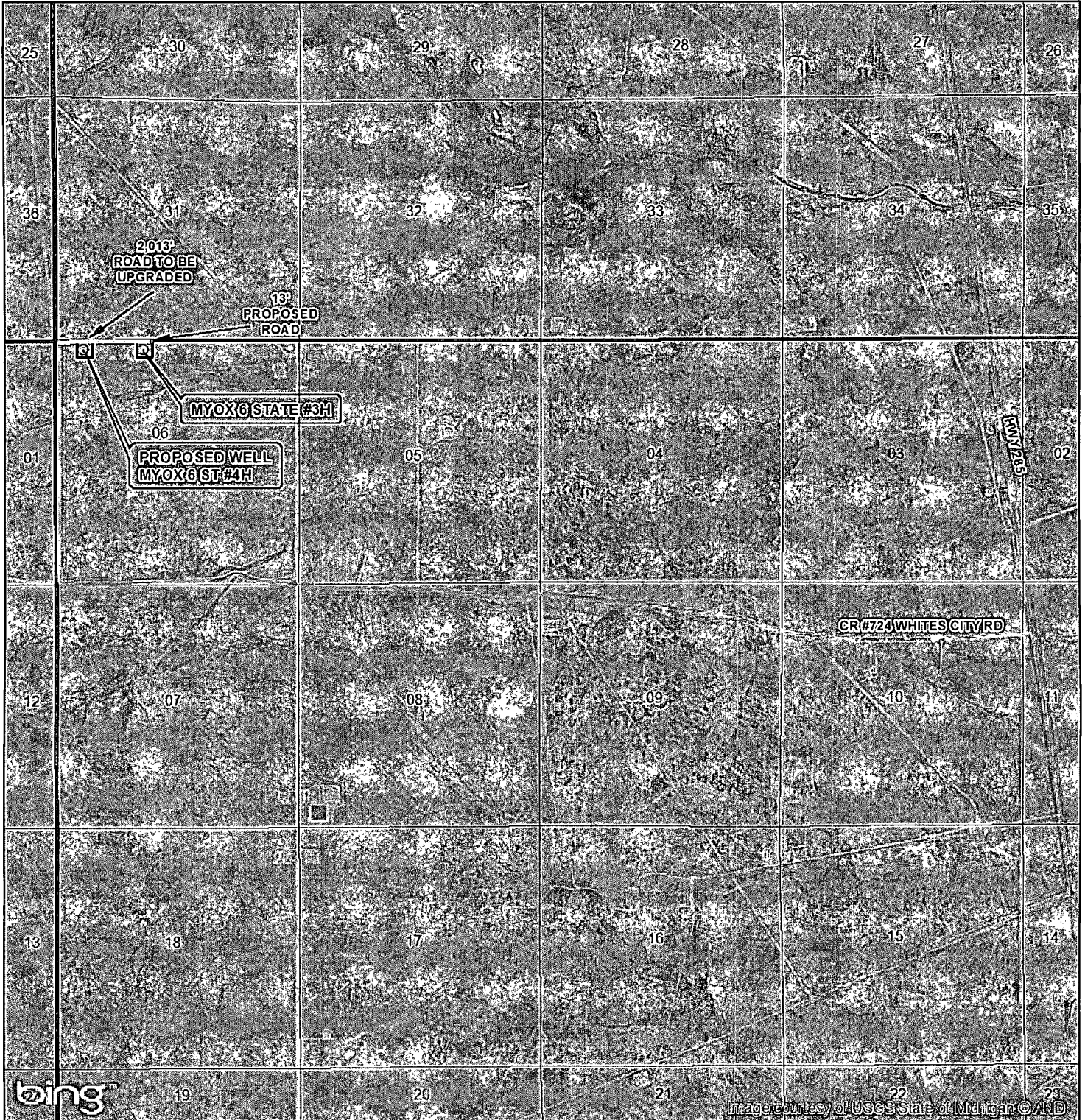
- WELL
- WELL PAD
- MAIN ROAD
- PROPOSED ROAD
- TWO TRACK ROAD

HARCROW SURVEYING, LLC  
 1107 WATSON, ARTESIA N.M. 88210  
 PH: (575) 513-2570 FAX: (575) 746-2158  
 chad\_harcrow77@yahoo.com



MAP DATE: 7/10/2013

# LOCATION VERIFICATION MAP



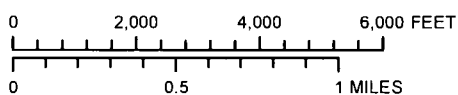
SEC. 6, TWP. 26S, RGE. 28E  
 SURVEY: N.M.P.M.  
 COUNTY: EDDY STATE: NEW MEXICO  
 DESCRIPTION: MYOX 6 ST #3H  
 190' FNL, 1980' FWL

ELEVATION: 3067.9'  
 OPERATOR: COG OPERATING LLC  
 LEASE: MYOX 6 ST

W.O. # 13-775



1 IN = 3,000 FT



- WELL
- WELL PAD
- MAIN ROAD
- PROPOSED ROAD
- TWO TRACK ROAD

HARCROW SURVEYING, LLC  
 1107 WATSON, ARTESIA N.M. 88210  
 PH: (575) 513-2570 FAX: (575) 746-2158  
 chad\_harcrow77@yahoo.com



MAP DATE: 7/10/2013