

District I
1625 N. French Dr., Hobbs, NM 88240
Phone: (575) 393-6161 Fax: (575) 393-0720

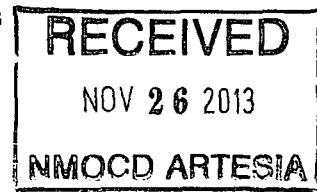
District II
811 S. First St., Artesia, NM 88210
Phone: (575) 748-1283 Fax: (575) 748-9720

District III
1000 Rio Brazos Road, Aztec, NM 87410
Phone: (505) 334-6178 Fax: (505) 334-6170

District IV
1220 S. St. Francis Dr., Santa Fe, NM 87505
Phone: (505) 476-3460 Fax: (505) 476-3462

State of New Mexico
Energy Minerals and Natural Resources
Oil Conservation Division
1220 South St. Francis Dr.
Santa Fe, NM 87505

Form C-101
Revised July 18, 2013



APPLICATION FOR PERMIT TO DRILL, RE-ENTER, DEEPEN, PLUGBACK, OR ADD A ZONE

Operator Name and Address COG Operating LLC 2208 West Main Street Artesia, NM 88210		OGRID Number 229137
Property Code 392f2		API Number 30-05-41830
Property Name Salada Vista 36 State		Well No SH

7. Surface Location

UL - Lot	Section	Township	Range	Lot Idn	Feet from	N/S Line	Feet From	E/W Line	County
3	31	19S	31E	3	1830	South	190	West	Eddy

*** Proposed Bottom Hole Location**

UL - Lot	Section	Township	Range	Lot Idn	Feet from	N/S Line	Feet From	E/W Line	County
M	36	19S	30E	M	380	South	330	West	Eddy

9. Pool Information

Pool Name	Pool Code
Gatuna Canyon Bone Spring	96688

Additional Well Information

11. Work Type New Well	12. Well Type Oil	13. Cable/Rotary	14. Lease Type State	15. Ground Level Elevation 3401.2
16. Multiple N	17. Proposed Depth 14496	18. Formation Bone Spring	19. Contractor	20. Spud Date 12/1/2013
Depth to Ground water		Distance from nearest fresh water well		Distance to nearest surface water

☒ We will be using a closed-loop system in lieu of lined pits

21. Proposed Casing and Cement Program

Type	Hole Size	Casing Size	Casing Weight/ft	Setting Depth	Sacks of Cement	Estimated TOC
Surface	17.5	13.375	48	480	400	
Intemd	12.25	9.625	36	4050	1200	
Production	7.875	5.5	17	14496	2000	2150

Casing/Cement Program: Additional Comments

Plan to drill a 17-1/2" hole to 480' with Fresh Water. Run 13-3/8", 48#, H-40 csg and cmt to surface. Drill 12-1/4" hole to 4050' with Brine, and run 9-5/8", 36#/40#, J-55 and cement to surface in 2 stages. Drill 7-7/8" curve and lateral with cut brine to approx 14,496' MD. Run 5-1/2", 17#, P-110 csg and cement to 2150'.

22. Proposed Blowout Prevention Program

Type	Working Pressure	Test Pressure	Manufacturer
Double Ram	3000	3000	Cameron

23. I hereby certify that the information given above is true and complete to the best of my knowledge and belief.
I further certify that I have complied with 19.15.14.9 (A) NMAC ☒ and/or 19.15.14.9 (B) NMAC ☒, if applicable.

Printed name: **Mayte Reyes**

Title: **Regulatory Analyst**

E-mail Address: **mreyes1@concho.com**

Date: **11/27/2013**

Phone: **575-748-6945**

OIL CONSERVATION DIVISION

Approved By:

Title:

Approved Date:

Expiration Date:

Conditions of Approval Attached

DISTRICT I
1825 N. FRENCH DR., HOBBS, NM 88240
Phone: (575) 363-6161 Fax: (575) 363-0720

DISTRICT II
811 S. FIRST ST., ARTESIA, NM 88210
Phone: (575) 748-1803 Fax: (575) 748-0720

DISTRICT III
1000 RIO BRAZOS RD., AZTEC, NM 87410
Phone: (505) 334-8178 Fax: (505) 334-8170

DISTRICT IV
1820 S. ST. FRANCIS DR., SANTA FE, NM 87505
Phone: (505) 478-3460 Fax: (505) 478-3462

State of New Mexico
Energy, Minerals & Natural Resources Department
OIL CONSERVATION DIVISION
1220 SOUTH ST. FRANCIS DR.
Santa Fe, New Mexico 87505

Form C-102
Revised August 1, 2011
Submit one copy to appropriate
District Office

☐ AMENDED REPORT

WELL LOCATION AND ACREAGE DEDICATION PLAT

API Number 30-015- 41830	Pool Code 96688	Pool Name Gatuna Canyon; Bone Spring
Property Code 39212	Property Name SALADA VISTA 36 STATE	Well Number 5H
OCRID No. 229137	Operator Name COG OPERATING, LLC	Elevation 3401.2'

Surface Location

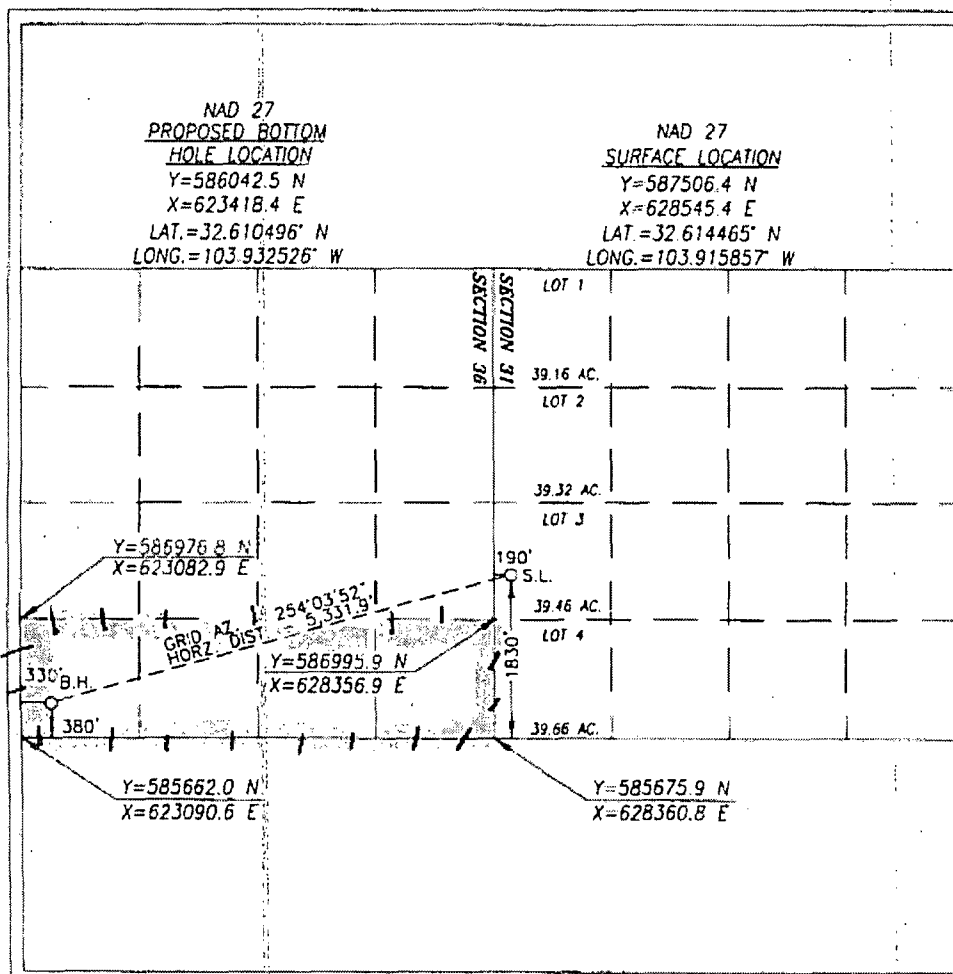
UL or lot No.	Section	Township	Range	Lot Idn	Feet from the	North/South line	Feet from the	East/West line	County
L 3	31	19-S	31-E		1830	SOUTH	190	WEST	EDDY

Bottom Hole Location If Different From Surface

UL or lot No.	Section	Township	Range	Lot Idn	Feet from the	North/South line	Feet from the	East/West line	County
M	36	19-S	30-E		380	SOUTH	330	WEST	EDDY

Dedicated Acres	Joint or Infill	Consolidation Code	Order No.
160			

NO ALLOWABLE WILL BE ASSIGNED TO THIS COMPLETION UNTIL ALL INTERESTS HAVE BEEN CONSOLIDATED
OR A NON-STANDARD UNIT HAS BEEN APPROVED BY THE DIVISION



OPERATOR CERTIFICATION

I hereby certify that the information herein is true and complete to the best of my knowledge and belief, and that this organization either owns a working interest or unleased mineral interest in the land including the proposed bottom hole location or has a right to drill this well at this location pursuant to a contract with an owner of such mineral or working interest, or to a voluntary pooling agreement or a compulsory pooling order heretofore entered by the division.

Melanie Parker 11/27/13
Signature Date
Melanie J. Parker
Printed Name
mparker@concho.com
E-mail Address

SURVEYOR CERTIFICATION

I hereby certify that the well location shown on this plat was plotted from field notes of actual surveys made by me or under my supervision, and that the same is true and correct to the best of my belief.

OCTOBER 8, 2013

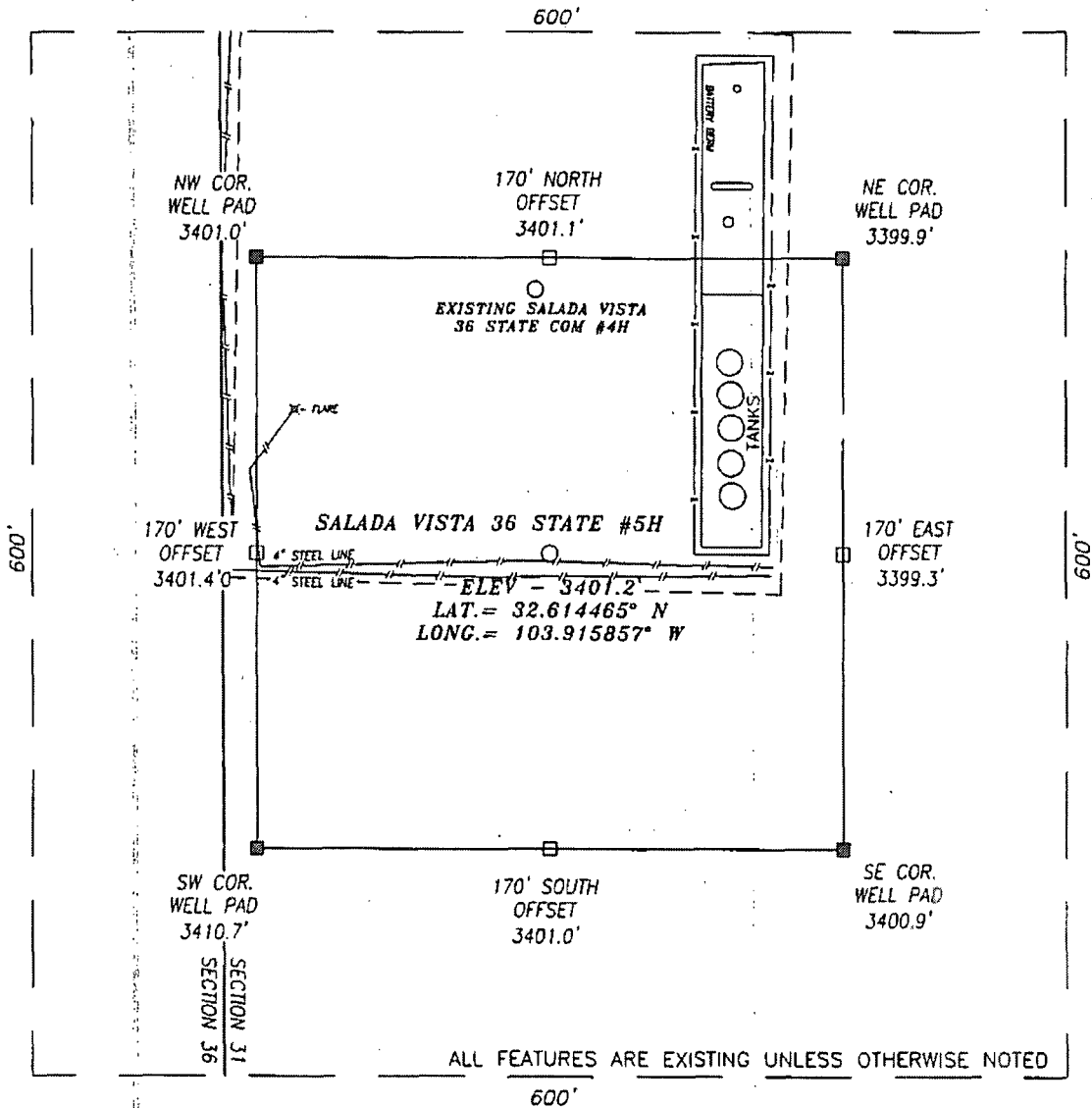
Date of Survey

Signature & Seal of Professional Surveyor



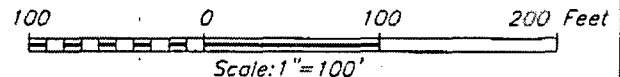
Chad Hargrow 11/26/13
Certificate No. CHAD HARGROW 17777
W.O. # 13-822 DRAWN BY: TL

SECTION 31, TOWNSHIP 19 SOUTH, RANGE 31 EAST, N.M.P.M.,
EDDY COUNTY. NEW MEXICO



DIRECTIONS TO LOCATION:

FROM THE INTERSECTION OF HWY 360 AND CR #222 (SHUGART RD) GO EAST ALONG CR #222 AND GO APPROX. 3.2 MILES; THEN TURN LEFT (NORTH) ONTO A CALICHE RD AND GO APPROX. 0.4 MILE; THEN TURN RIGHT (EAST) AND GO APPROX. 0.3 MILE; THEN TURN RIGHT (SOUTH) AND GO APPROX. 0.3 MILE TO EXISTING SALADA VISTA 36 STATE #4H; THEN GO TO THE SOUTH LINE OF THE PAD ARRIVING AT PROPOSED WELL.



HARCROW SURVEYING, LLC
2314 W. MAIN ST, ARTESIA, N.M. 88210
PH: (575) 513-2570 FAX: (575) 746-2158
chad_harcrow77@yahoo.com



COG OPERATING, LLC

SALADA VISTA 36 STATE #5H WELL
LOCATED 1830 FEET FROM THE SOUTH LINE
AND 190 FEET FROM THE WEST LINE OF SECTION 31,
TOWNSHIP 19 SOUTH, RANGE 31 EAST, N.M.P.M.,
EDDY COUNTY, NEW MEXICO

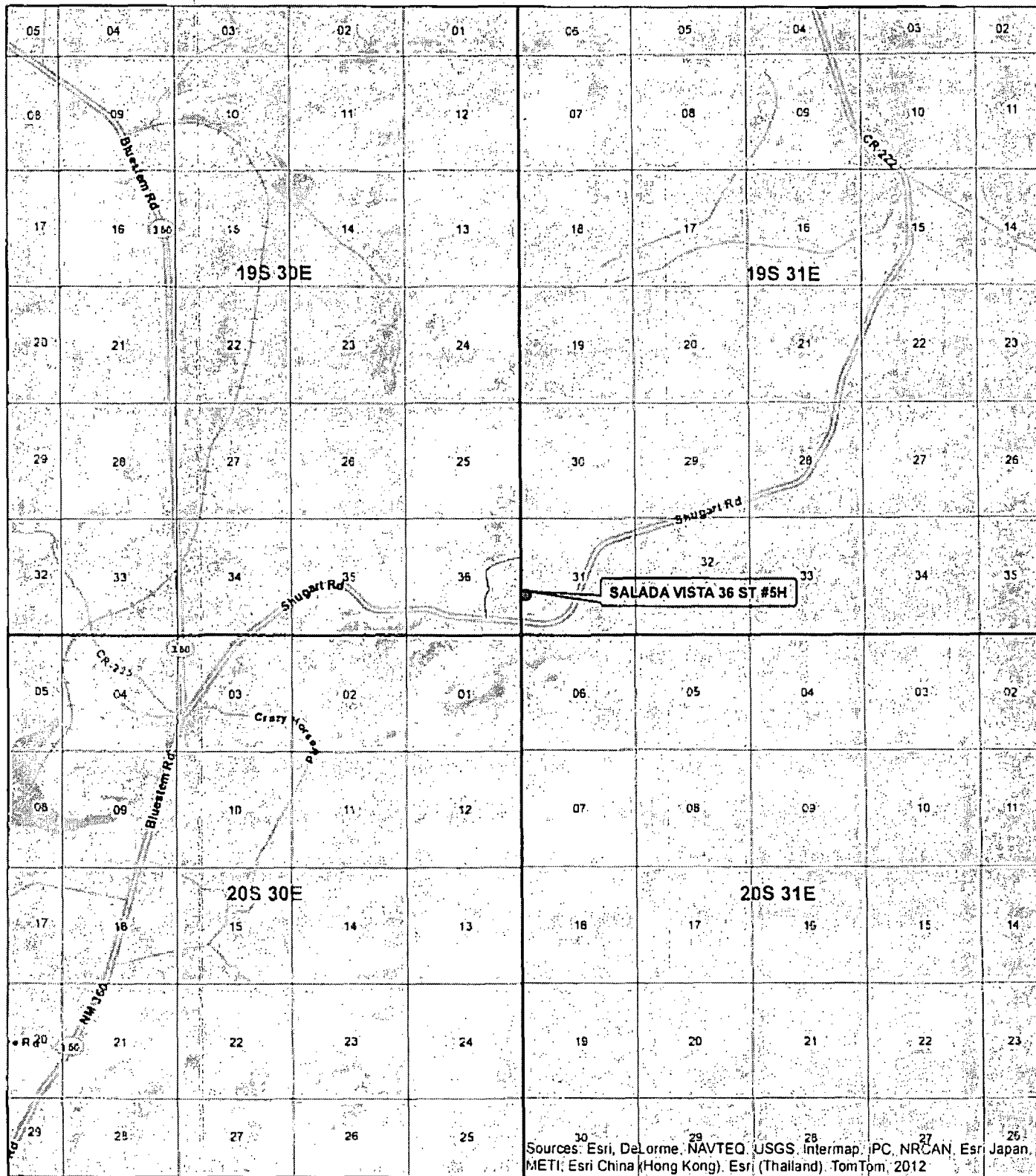
SURVEY DATE: 10/8/2013

PAGE: 1 OF 1

DRAFTING DATE: 10/9/2013

APPROVED BY: CH	DRAWN BY: TL
-----------------	--------------

FILE: 13-822



Sources: Esri, DeLorme, NAVTEQ, USGS, Intermap, IPC, NRCAN, Esri Japan, METI, Esri China (Hong Kong), Esri (Thailand), TomTom, 2012

SECTION: 31 TOWNSHIP: 19 S. RANGE: 31 E. SURVEY: N.M.P.M

COUNTY: EDDY STATE: NEW MEXICO ELEVATION: 3401.2'

WELL NAME: SALADA VISTA 36 ST #5H

LEGEND:

Well

Existing Road

1830' FSL, 190' FWL W.O. # 13-822

LEASE: SALADA VISTA 36 ST

0 4,000 8,000 12,000 FEET

1 IN = 6,000 FT

0 0.5 1 1.5 2 2.5 MILES



COG OPERATING, LLC

HARCROW SURVEYING, LLC

1107 WATSON, ARTESIA N.M. 88210

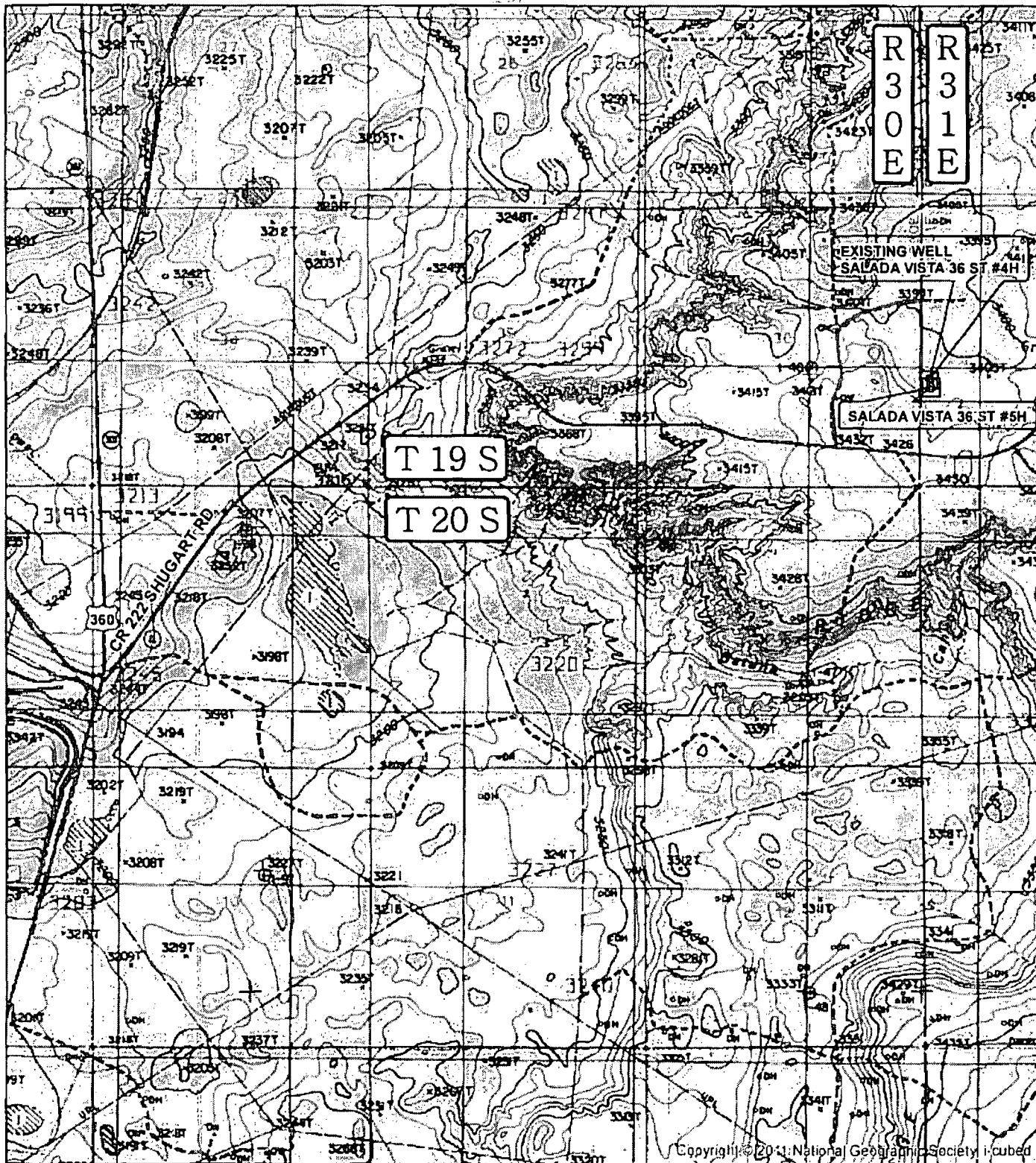
PH: (575) 513-2570 FAX: (575) 746-2158

chad_harcrow77@yahoo.com



VICINITY MAP

10/10/2013



SECTION: 31 TOWNSHIP: 19 S. RANGE: 31 E. SURVEY: N.M.P.M

COUNTY: EDDY STATE: NEW MEXICO ELEVATION: 3401.2'

WELL NAME: SALADA VISTA 36 ST #5H

LEGEND:

- WELL
- WELL PAD
- MAIN ROAD

1830' FSL, 190' FWL W.O. # 13-822

LEASE: SALADA VISTA 36 ST

0 2,000 4,000 FEET

0 0.5 1 MILES 1 IN = 2,500 FT

CONCHO COG OPERATING, LLC

HARCROW SURVEYING, LLC

1107 WATSON, ARTESIA N.M. 88210

PH: (575) 513-2570 FAX: (575) 746-2158

chad_harcrow77@yahoo.com



LOCATION MAP

TOPO

10/10/2013



SECTION: 31 TOWNSHIP: 19 S. RANGE: 31 E. SURVEY: N.M.P.M.

COUNTY: EDDY STATE: NEW MEXICO ELEVATION: 3401.2'

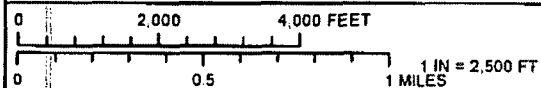
WELL NAME: SALADA VISTA 36 ST #5H

LEGEND:

- WELL
- WELL PAD
- MAIN ROAD

1830' FSL, 190' FWL W.O. # 13-822

LEASE: SALADA VISTA 36 ST



COG OPERATING, LLC

HARCROW SURVEYING, LLC

1107 WATSON, ARTESIA N.M. 88210

PH: (575) 513-2570 FAX: (575) 746-2158

chad_harcrow77@yahoo.com



LOCATION MAP

IMAGERY 10/10/2013

Salada Vista 36 State 5H

	Hole Size	Casing	Wt	Depth	Cmt	TOC
Surface	17.5	13.375	48	480'	400	0
Intrmd	12.25	9.625	36/40	4050'	1200	0
Prod	7.875	5.5	17	14,496'	2000	2150'

Plan to drill a 17-1/2" hole to 480' with Fresh Water. Run 13-3/8", 48#, H-40 csg and cmt to surface. Drill 12-1/4" hole to 4050' with Brine, and run 9-5/8", 36#/40#, J-55 and cement to surface in 2 stages. Drill 7-7/8" curve and lateral with cut brine to approx 14,496' MD. Run 5-1/2", 17#, P-110 csg and cement to 2150'.

Well Control

Type	Pressure	Test	Manufacture
Double Ram	3000	3000	Cameron

Permit Conditions of Approval

API: 30-015-41830

OCD Reviewer	Condition
CSHAPARD	Once the well is spud, to prevent ground water contamination through whole or partial conduits from the surface, the operator shall drill without interruption through the fresh water zone or zones and shall immediately set in cement the water protection string.

*Well will be evaluated for NSL subsequent
to drilling JD*