

District I
1625 N. French Dr., Hobbs, NM 88240
Phone: (575) 393-6161 Fax: (575) 393-0720

District II
811 S. First St., Artesia, NM 88210
Phone: (575) 748-1283 Fax: (575) 748-9720

District III
1000 Rio Brazos Road, Aztec, NM 87410
Phone: (505) 334-6178 Fax: (505) 334-6170

District IV
1220 S. St. Francis Dr., Santa Fe, NM 87505
Phone: (505) 476-3460 Fax: (505) 476-3462

State of New Mexico

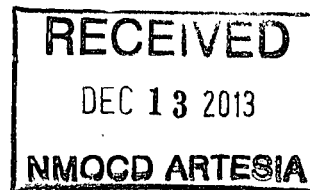
Form C-101
Revised July 18, 2013

Energy Minerals and Natural Resources

Oil Conservation Division

1220 South St. Francis Dr.

Santa Fe, NM 87505



APPLICATION FOR PERMIT TO DRILL, RE-ENTER, DEEPEN, PLUGBACK, OR ADD A ZONE

¹ Operator Name and Address COG Operating LLC 2208 West Main Street Artesia, NM 88210		² OGRID Number 229137
³ Property Code 40152		⁴ API Number 30-05-41864
⁵ Property Name Myox 19 State Com		⁶ Well No 3H

⁷ Surface Location

UL - Lot	Section	Township	Range	Lot Idn	Feet from	N/S Line	Feet From	E/W Line	County
O	19	25S	28E	O	190	South	2290	East	Eddy

⁸ Proposed Bottom Hole Location

UL - Lot	Section	Township	Range	Lot Idn	Feet from	N/S Line	Feet From	E/W Line	County
B	18	25S	28E	B	330	North	1980	East	Eddy

⁹ Pool Information

Pool Name	Pool Code
Hay Hollow: Bone Spring, North	30216

Additional Well Information

¹¹ Work Type New Well	¹² Well Type Oil	¹³ Cable/Rotary	¹⁴ Lease Type State	¹⁵ Ground Level Elevation 2995.5'
¹⁶ Multiple N	¹⁷ Proposed Depth 17816	¹⁸ Formation Bone Spring	¹⁹ Contractor	²⁰ Spud Date 12/20/2013
Depth to Ground water		Distance from nearest fresh water well		Distance to nearest surface water

☒ We will be using a closed-loop system in lieu of lined pits

²¹ Proposed Casing and Cement Program

Type	Hole Size	Casing Size	Casing Weight/ft	Setting Depth	Sacks of Cement	Estimated TOC
Surface	17.5	13.375	48	315	250	
Intrmd	12.25	9.625	36	2280	625	
Production	7.875	5.5	17	17816	2500	2080

Casing/Cement Program: Additional Comments

Plan to drill a 17-1/2" hole to 315' with Fresh Water. Run 13-3/8", 48#, H-40 csg and cmt to surface. Drill 12-1/4" hole to 2,280' with Brine, and run 9-5/8", 36#, J-55 and cement to surface in 1 stage. Drill 7-7/8" curve and lateral with cut brine to approx 17,816' MD. Run 5-1/2", 17#, P-110 csg and cement to 2,080' in 1 stage.

²² Proposed Blowout Prevention Program

Type	Working Pressure	Test Pressure	Manufacturer
Double Ram	3000	3000	Cameron

²³ I hereby certify that the information given above is true and complete to the best of my knowledge and belief. I further certify that I have complied with 19.15.14.9 (A) NMAC <input checked="" type="checkbox"/> and/or 19.15.14.9 (B) NMAC <input checked="" type="checkbox"/> , if applicable. Signature: <i>Mayte Reyes</i>		OIL CONSERVATION DIVISION	
Printed name: Mayte Reyes		Approved By: <i>T. C. Shepard</i>	
Title: Regulatory Analyst		Title: "Geologist"	
E-mail Address: mreyes1@concho.com		Approved Date: <i>12/13/2013</i> Expiration Date: <i>12/13/2015</i>	
Date: 12/12/2013	Phone: 575-748-6945	Conditions of Approval Attached	

DISTRICT I
1625 N. FRENCH DR., HOBBS, NM 88240
Phone: (575) 393-6161 Fax: (575) 393-0720

DISTRICT II
811 S. FIRST ST., ARTESIA, NM 88210
Phone: (575) 748-1283 Fax: (575) 748-0720

DISTRICT III
1000 RIO BRAZOS RD., AZTEC, NM 87410
Phone: (505) 334-6178 Fax: (505) 334-6170

DISTRICT IV
1220 S. ST. FRANCIS DR., SANTA FE, NM 87505
Phone: (505) 478-3480 Fax: (505) 478-3482

State of New Mexico
Energy, Minerals & Natural Resources Department

OIL CONSERVATION DIVISION

1220 SOUTH ST. FRANCIS DR.
Santa Fe, New Mexico 87505

Form C-102

Revised August 1, 2011

Submit one copy to appropriate
District Office

RECEIVED

DEC 13 2013

☐ AMENDED REPORT

NMOCD ARTESIA

WELL LOCATION AND ACREAGE DEDICATION PLAT

API Number 30-015- 41864	Pool Code 30216	Pool Name Hay Hollow; Bone Spring, North
Property Code 40152	Property Name MYOX 19 STATE COM	Well Number 3H
OGRID No. 229137	Operator Name COG OPERATING, LLC	Elevation 2995.5'

Surface Location

UL or lot No.	Section	Township	Range	Lot Idn	Feet from the	North/South line	Feet from the	East/West line	County
0	19	25-S	28-E		190	SOUTH	2290	EAST	EDDY

Bottom Hole Location If Different From Surface

UL or lot No.	Section	Township	Range	Lot Idn	Feet from the	North/South line	Feet from the	East/West line	County
B	18	25-S	28-E		330	NORTH	1980	EAST	EDDY

Dedicated Acres 320	Joint or Infill	Consolidation Code	Order No.
------------------------	-----------------	--------------------	-----------

NO ALLOWABLE WILL BE ASSIGNED TO THIS COMPLETION UNTIL ALL INTERESTS HAVE BEEN CONSOLIDATED
OR A NON-STANDARD UNIT HAS BEEN APPROVED BY THE DIVISION

<p>NAD 27 <u>PROPOSED BOTTOM HOLE LOCATION</u> Y=413379.9 N X=564757.0 E LAT.=32.136325' N LONG.=104.124126' W</p>	LOT 1 40.97 Ac. Y=413708.0 N X=564072.6 E	330' B.H.	1980'	Y=413711.7 N X=565403.0 E			
	LOT 2						
<p>NAD 27 <u>SURFACE LOCATION</u> Y=403244.2 N X=564559.4 E LAT.=32.108463' N LONG.=104.124828' W</p>	41.06 Ac. LOT 3	GRID AZ. - 1°07'01" HORZ. DIST. - 10.137.6	SECTION 18 SECTION 19	Y=403067.4 N X=564095.1 E			
	41.19 Ac. LOT 4						
	41.22 Ac. LOT 1						
	40.97 Ac. LOT 2						
	40.78 Ac. LOT 3						
	40.52 Ac. LOT 4						
	40.43 Ac.				190' S.L.	2290'	Y=403028.0 N X=565473.6 E

OPERATOR CERTIFICATION

I hereby certify that the information herein is true and complete to the best of my knowledge and belief, and that this organization either owns a working interest or unleased mineral interest in the land including the proposed bottom hole location or has a right to drill this well at this location pursuant to a contract with an owner of such mineral or working interest, or to a voluntary pooling agreement or a compulsory pooling order heretofore entered by the division.

Mayte Reyes 12-12-13
Signature Date
MAYTE REYES
Printed Name
mreyes@concho.com
E-mail Address

SURVEYOR CERTIFICATION

I hereby certify that the well location shown on this plat was plotted from field notes of actual surveys made by me or under my supervision, and that the same is true and correct to the best of my belief.

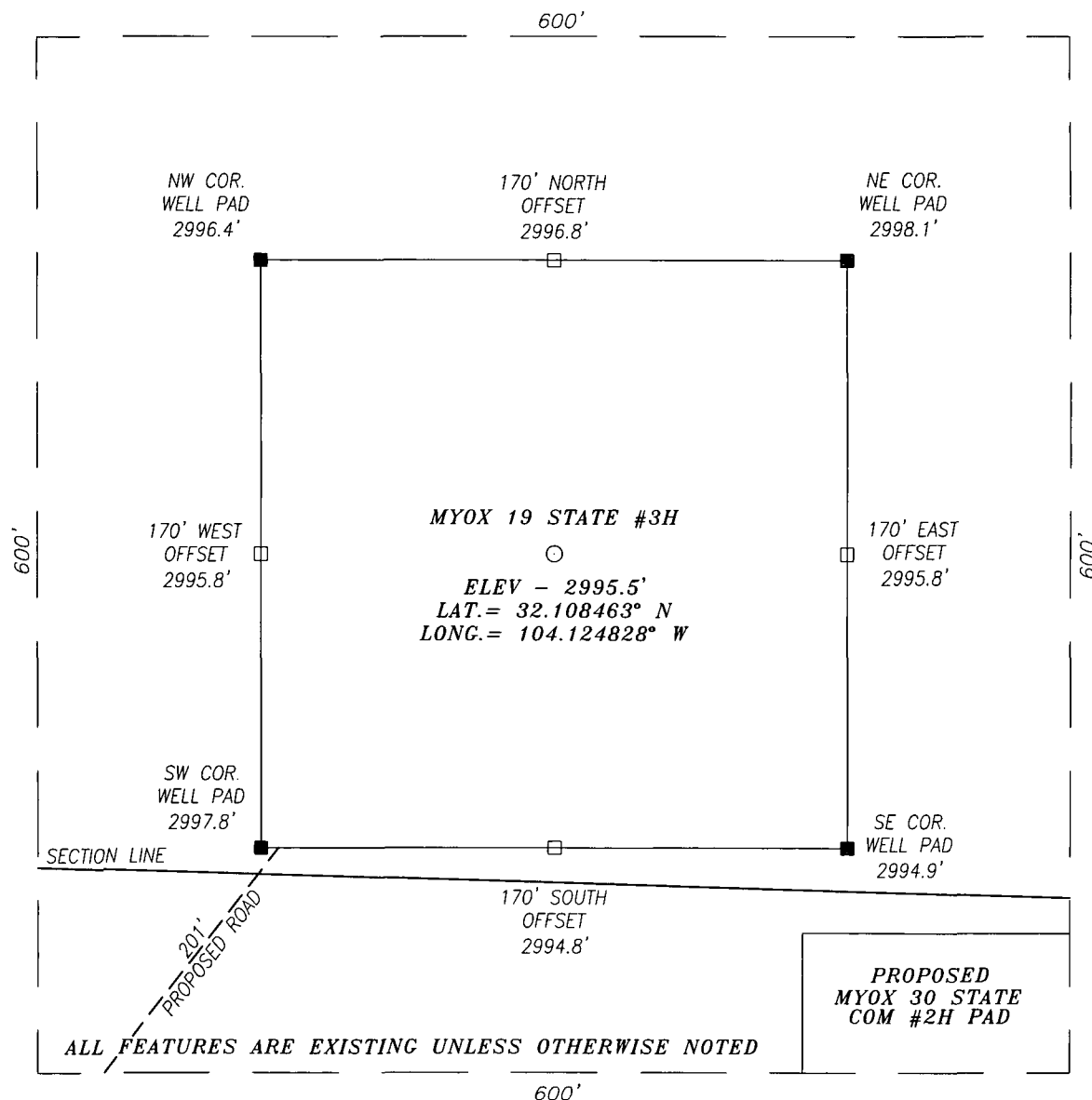
APRIL 5, 2013
Date of Survey

Signature & Seal of Professional Surveyor

CHAD L. HARCROW
NEW MEXICO
17777
LICENSED PROFESSIONAL SURVEYOR

Chad Harcrow 10/28/13
Certificate No. CHAD HARCROW 17777
W.O. # 13-757 DRAWN BY: TL

SECTION 19, TOWNSHIP 25 SOUTH, RANGE 28 EAST, N.M.P.M.,
EDDY COUNTY NEW MEXICO



DIRECTIONS TO LOCATION

HEADING SOUTH ON HWY 285 0.9 MILES PAST MILE MARKER 10 TURN RIGHT (WEST) ONTO A CALICHE RD GO APPROX. 2.6 MILES TURN LEFT (SOUTHWEST) GO APPROX. 0.4 MILES TURN RIGHT (NORTHWEST) GO APPROX. 0.1 MILES TURN LEFT (SOUTHWEST) GO APPROX. 0.2 MILES TURN LEFT (SOUTH) GO APPROX. 0.3 MILES TURN LEFT (EAST) STAY ON WINDING ROAD FOR APPROX. 0.5 MILE AND PROPOSED WELL IS APPROX. 445 FEET NORTHEAST.

HARCROW SURVEYING, LLC

1107 WATSON, ARTESIA, N.M. 88210

PH: (575) 513-2570 FAX: (575) 746-2158

chad_harcrow77@yahoo.com



COG OPERATING, LLC

MYOX 19 STATE #3H WELL
LOCATED 190 FEET FROM THE SOUTH LINE
AND 2290 FEET FROM THE EAST LINE OF SECTION 19,
TOWNSHIP 25 SOUTH, RANGE 28 EAST, N.M.P.M.,
EDDY COUNTY, NEW MEXICO

SURVEY DATE: 04/05/2013

PAGE: 1 OF 1

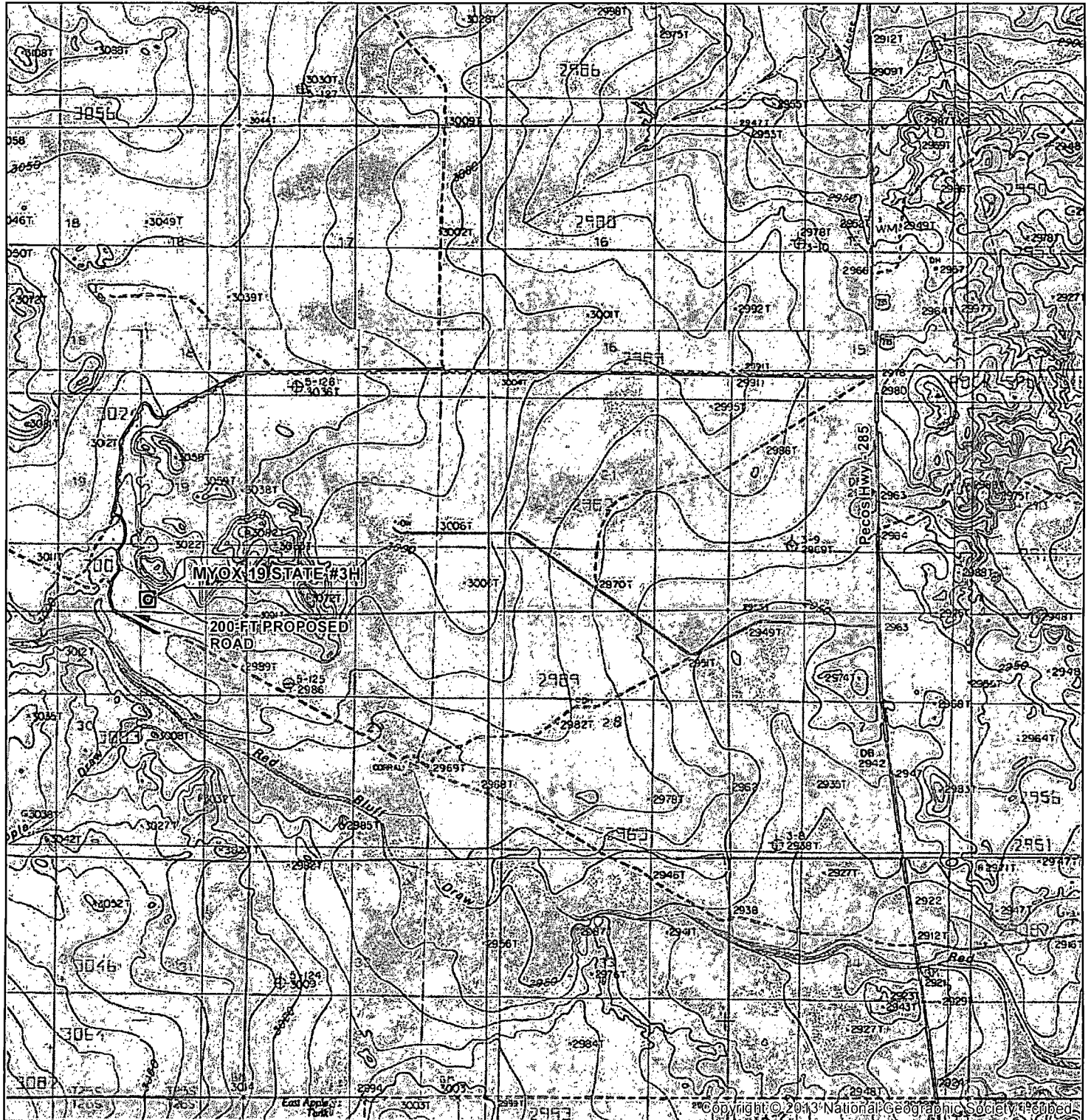
DRAFTING DATE: 04/09/2013

APPROVED BY: CH

DRAWN BY: VD

FILE: 13-170

LOCATION VERIFICATION MAP



SEC. 19, TWP. 25S, RGE. 28E
 SURVEY: N.M.P.M.
 COUNTY: EDDY STATE: NEW MEXICO
 DESCRIPTION: MYOX 19 STATE #3H
 190' FSL & 2290' FEL

ELEVATION: 2995.5'
 OPERATOR: COG OPERATING
 LEASE: MYOX 19 STATE

W.O. # 13-170

1 IN = 3,000 FT

0 1,000 2,000 3,000 4,000 FEET
 0 0.1 0.2 0.3 0.4 0.5 0.6 0.7 0.8 MILES

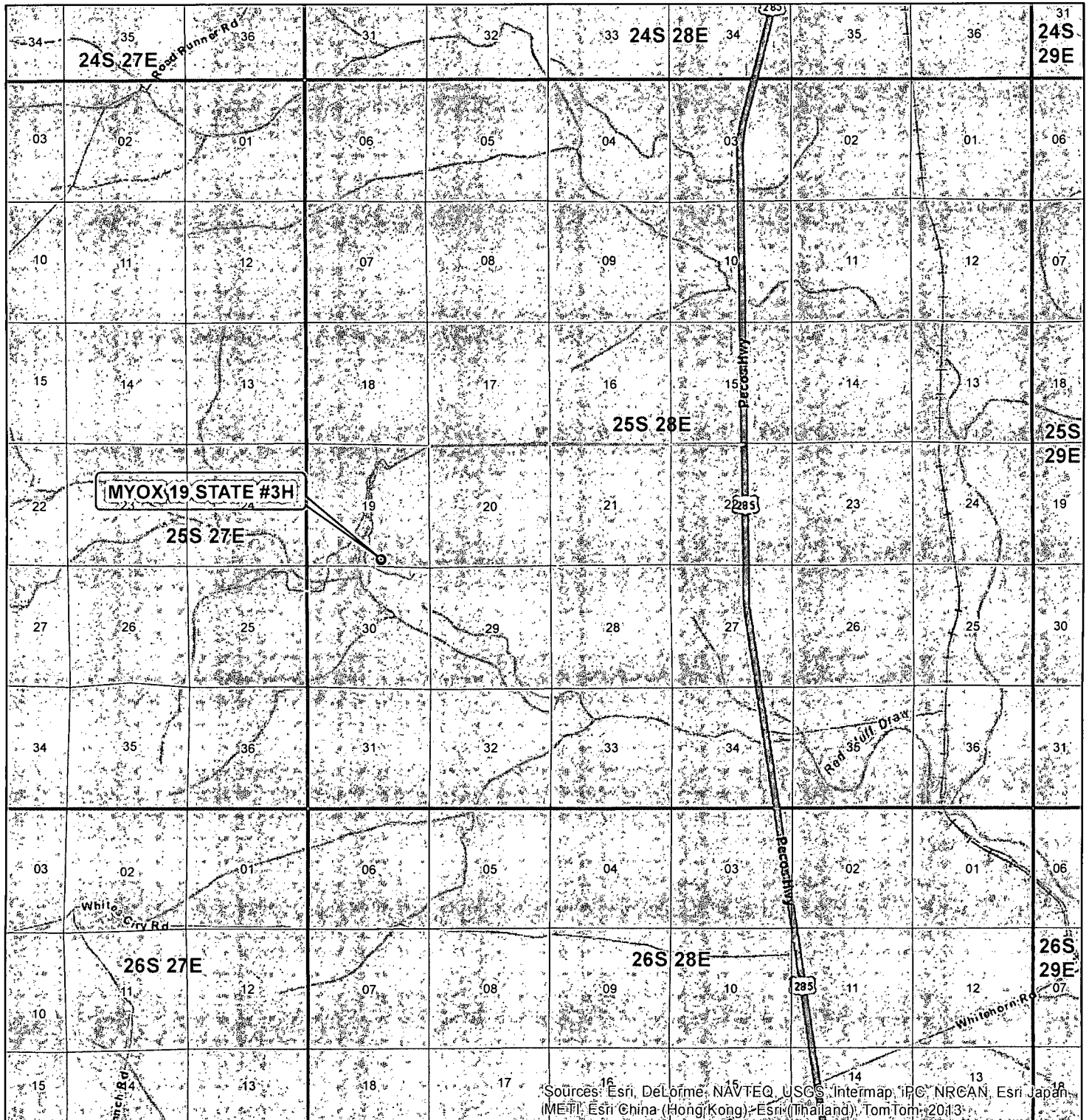
- WELL
- WELL PAD
- EXISTING ROAD
- PROPOSED ROAD

HARCROW SURVEYING, LLC
 1107 WATSON, ARTESIA N.M. 88210
 PH: (575) 513-2570 FAX: (575) 746-2158
 chad_harcrow77@yahoo.com



MAP DATE: 4/10/2013

VICINITY MAP



SEC. 19, TWP. 25S, RGE. 28E
 SURVEY: N.M.P.M.
 COUNTY: EDDY STATE: NEW MEXICO
 DESCRIPTION: MYOX 19 STATE #3H
 190' FSL & 2290' FEL

ELEVATION: 2995.5'
 OPERATOR: COG OPERATING
 LEASE: MYOX 19 STATE

W.O. # 13-170



1 IN = 6,000 FT

0 0.25 0.5 0.75 1 1.25 1.5 1.75 MILES

Well

TOWNSHIP
 SECTION

HARCROW SURVEYING, LLC
 1107 WATSON, ARTESIA N.M. 88210
 PH: (575) 513-2570 FAX: (575) 746-2158
 chad_harcrow77@yahoo.com



MAP DATE: 4/4/2013

Myox 19 State Com 3H

	Hole Size	Casing	Wt	Depth	Cmt	TOC
Surface	17.5	13.375	48	315'	250	0
Intrmd	12.25	9.625	36	2,280'	625	0
Prod	7.875	5.5	17	17,816'	2500	2,080'

Plan to drill a 17-1/2" hole to 315' with Fresh Water. Run 13-3/8", 48#, H-40 csg and cmt to surface. Drill 12-1/4" hole to 2,280' with Brine, and run 9-5/8", 36#, J-55 and cement to surface in 1 stage. Drill 7-7/8" curve and lateral with cut brine to approx 17,816' MD. Run 5-1/2", 17#, P-110 csg and cement to 2,080' in 1 stage.

Well Control

Type	Pressure	Test	Manufacture
Double Ram	3000	3000	Cameron

Permit Conditions of Approval

API: 30-015-41864
Myox 19 State Com #3H

OCD Reviewer	Condition
CSHAPARD	Once the well is spud, to prevent ground water contamination through whole or partial conduits from the surface, the operator shall drill without interruption through the fresh water zone or zones and shall immediately set in cement the water protection string