



Actual Wellpath Report

No. 126H AWP

Page 1 of 8



BAKER HUGHES

30 01539254

REFERENCE WELLPATH IDENTIFICATION

Operator	BOPCO, L.P.	Slot	JRU No.126H (Slot 4)
Area	Eddy County, NM	Well	No.126H (Slot 4)
Field	JRU NAD27	Wellbore	No. 126H AWB
Facility	Drilling Island 1		

REPORT SETUP INFORMATION

Projection System	NAD27 / TM New Mexico SP, Eastern Zone (3001), US feet	Software System	WellArchitect® 3.0.0
North Reference	Grid	User	Gentbry
Scale	0.999931	Report Generated	23/Sep/2013 at 08:19
Divergence at slot	0.24° East	Database/Source file	Midland DB/No. _126H_AWB.xml

WELLPATH LOCATION

	Local coordinates		Grid coordinates		Geographic coordinates	
	North[ft]	East[ft]	Easting[US ft]	Northing[US ft]	Latitude	Longitude
Spot Location	19.50	-0.18	639019.90	502574.60	32°22'51.197"N	103°52'58.817"W
Facility Reference Pt			639020.08	502555.10	32°22'51.004"N	103°52'58.816"W
Field Reference Pt			652495.44	494904.92	32°21'34.711"N	103°50'22.090"W

WELLPATH DATUM

Calculation method	Minimum curvature	Rig on No.4H SHL (KB) to Facility Vertical Datum	3190.00ft
Horizontal Reference Pt	Slot	Rig on No.4H SHL (KB) to Mean Sea Level	3190.00ft
Vertical Reference Pt	Rig on No.4H SHL (KB)	Rig on No.4H SHL (KB) to Mud Line at Slot (JRU No.126H (Slot 4))	3190.00ft
Section Origin Reference Pt	Rig on No.4H SHL (KB)	Section Origin	N 0.00, E 0.00
Section Vertical Reference	Mean Sea Level	Section Azimuth	273.08°



Actual Wellpath Report

No. 126H AWP

Page 2 of 8



BAKER HUGHES

REFERENCE WELLPATH IDENTIFICATION

Operator	BOPCO, L.P.	Slot	JRU No.126H (Slot 4)
Area	Eddy County, NM	Well	No.126H (Slot 4)
Field	JRU NAD27	Wellbore	No. 126H AWB
Facility	Drilling Island 1		

WELLPATH DATA (276 stations) † = interpolated/extrapolated station

MD [ft]	Inclination [°]	Azimuth [°]	TVD [ft]	Vert Sect [ft]	North [ft]	East [ft]	Grid East [US ft]	Grid North [US ft]	Latitude	Longitude	DLS [°/100ft]	Comment
0.00†	0.000	140.750	0.00	0.00	0.00	0.00	639019.90	502574.60	32°22'51.197"N	103°52'58.817"W	0.00	
25.00	0.000	140.750	25.00	0.00	0.00	0.00	639019.90	502574.60	32°22'51.197"N	103°52'58.817"W	0.00	
100.00	0.410	140.750	100.00	-0.18	-0.21	0.17	639020.07	502574.39	32°22'51.195"N	103°52'58.816"W	0.55	
200.00	0.530	144.720	200.00	-0.71	-0.86	0.66	639020.56	502573.74	32°22'51.189"N	103°52'58.810"W	0.12	
300.00	0.360	124.810	299.99	-1.26	-1.42	1.19	639021.09	502573.18	32°22'51.183"N	103°52'58.804"W	0.23	
400.00	0.530	122.730	399.99	-1.93	-1.85	1.84	639021.74	502572.75	32°22'51.179"N	103°52'58.796"W	0.17	
430.00	0.550	109.080	429.99	-2.19	-1.97	2.09	639021.99	502572.63	32°22'51.178"N	103°52'58.793"W	0.43	
561.00	0.480	139.600	560.98	-3.17	-2.59	3.04	639022.94	502572.01	32°22'51.171"N	103°52'58.782"W	0.21	
654.00	0.100	186.400	653.98	-3.44	-2.97	3.28	639023.18	502571.63	32°22'51.168"N	103°52'58.779"W	0.45	
748.00	0.490	148.900	747.98	-3.66	-3.40	3.48	639023.38	502571.20	32°22'51.163"N	103°52'58.777"W	0.44	
841.00	0.900	161.500	840.97	-4.15	-4.43	3.92	639023.82	502570.17	32°22'51.153"N	103°52'58.772"W	0.47	
935.00	0.180	160.000	934.97	-4.48	-5.27	4.20	639024.10	502569.33	32°22'51.145"N	103°52'58.769"W	0.77	
998.00	0.410	98.000	997.97	-4.74	-5.39	4.46	639024.36	502569.21	32°22'51.144"N	103°52'58.766"W	0.57	
1093.00	0.520	113.900	1092.97	-5.48	-5.62	5.19	639025.09	502568.98	32°22'51.141"N	103°52'58.757"W	0.18	
1188.00	0.570	111.800	1187.96	-6.33	-5.97	6.02	639025.92	502568.63	32°22'51.138"N	103°52'58.748"W	0.06	
1284.00	0.700	136.300	1283.96	-7.21	-6.57	6.87	639026.77	502568.03	32°22'51.132"N	103°52'58.738"W	0.31	
1378.00	0.470	104.600	1377.95	-8.01	-7.08	7.64	639027.54	502567.52	32°22'51.127"N	103°52'58.729"W	0.41	
1473.00	0.760	145.700	1472.95	-8.77	-7.70	8.37	639028.27	502566.90	32°22'51.121"N	103°52'58.720"W	0.54	
1567.00	0.900	123.700	1566.94	-9.79	-8.62	9.34	639029.24	502565.98	32°22'51.111"N	103°52'58.709"W	0.37	
1662.00	0.550	100.000	1661.93	-10.88	-9.12	10.41	639030.31	502565.48	32°22'51.107"N	103°52'58.697"W	0.48	
1757.00	0.600	140.300	1756.92	-11.67	-9.58	11.17	639031.07	502565.02	32°22'51.102"N	103°52'58.688"W	0.42	
1846.00	0.940	84.500	1845.91	-13.88	-10.19	13.35	639033.25	502564.41	32°22'51.096"N	103°52'58.662"W	0.41	
1941.00	1.760	359.500	2040.89	-14.56	-8.66	14.11	639034.01	502565.94	32°22'51.111"N	103°52'58.653"W	2.02	
2035.00	3.410	351.100	2134.79	-13.89	-4.45	13.67	639033.57	502570.15	32°22'51.153"N	103°52'58.658"W	1.80	
2130.00	5.500	341.030	2229.50	-11.59	2.65	11.75	639031.65	502577.25	32°22'51.223"N	103°52'58.680"W	2.34	
2225.00	6.480	344.180	2323.98	-8.15	12.11	8.81	639028.71	502586.71	32°22'51.317"N	103°52'58.714"W	1.09	
2318.00	5.600	336.760	2416.46	-4.43	21.33	5.59	639025.49	502595.93	32°22'51.408"N	103°52'58.751"W	1.26	
2413.00	5.210	333.860	2511.04	-0.27	29.46	1.86	639021.76	502604.06	32°22'51.489"N	103°52'58.794"W	0.50	
2507.00	4.980	340.110	2604.67	3.40	37.13	-1.41	639018.49	502611.73	32°22'51.565"N	103°52'58.832"W	0.64	
2602.00	4.790	345.280	2699.33	6.23	44.84	-3.82	639016.08	502619.44	32°22'51.641"N	103°52'58.860"W	0.50	
2697.00	4.700	346.890	2794.00	8.52	52.47	-5.71	639014.19	502627.06	32°22'51.717"N	103°52'58.881"W	0.17	
2792.00	5.110	337.800	2888.65	11.42	60.18	-8.19	639011.71	502634.77	32°22'51.793"N	103°52'58.910"W	0.92	
2887.00	5.360	337.200	2983.26	15.16	68.18	-11.51	639008.39	502642.78	32°22'51.872"N	103°52'58.948"W	0.27	
2981.00	4.820	339.200	3076.89	18.68	75.92	-14.61	639005.29	502650.52	32°22'51.949"N	103°52'58.984"W	0.60	
3076.00	5.320	334.100	3171.52	22.43	83.62	-17.96	639001.95	502658.21	32°22'52.025"N	103°52'59.023"W	0.71	
3171.00	5.570	333.800	3266.09	26.81	91.71	-21.91	638997.99	502666.31	32°22'52.106"N	103°52'59.069"W	0.26	
3266.00	4.860	333.400	3360.69	31.06	99.45	-25.75	638994.15	502674.04	32°22'52.182"N	103°52'59.113"W	0.75	
3361.00	4.240	330.900	3455.39	34.93	106.12	-29.26	638990.64	502680.71	32°22'52.248"N	103°52'59.153"W	0.69	
3454.00	4.250	334.300	3498.27	36.54	108.94	-30.73	638989.18	502683.53	32°22'52.276"N	103°52'59.170"W	0.59	
3555.00	5.100	340.000	3559.07	38.69	113.53	-32.63	638987.27	502688.12	32°22'52.322"N	103°52'59.192"W	1.59	
3636.00	5.700	336.760	3629.76	41.49	119.73	-35.10	638984.80	502694.32	32°22'52.383"N	103°52'59.221"W	0.95	
3730.00	5.580	339.260	3723.30	45.41	128.29	-38.56	638981.34	502702.89	32°22'52.468"N	103°52'59.261"W	0.29	
3825.00	5.070	336.890	3817.89	49.13	136.47	-41.85	638978.06	502711.07	32°22'52.549"N	103°52'59.299"W	0.58	
3920.00	5.230	336.490	3912.51	52.92	144.31	-45.22	638974.68	502718.90	32°22'52.627"N	103°52'59.338"W	0.17	
4015.00	4.910	338.270	4007.14	56.56	152.05	-48.45	638971.45	502726.64	32°22'52.704"N	103°52'59.375"W	0.38	



Actual Wellpath Report

No. 126H AWP

Page 3 of 8



BAKER HUGHES

REFERENCE WELLPATH IDENTIFICATION

Operator	BOPCO, L.P.	Slot	JRU No.126H (Slot 4)
Area	Eddy County, NM	Well	No.126H (Slot 4)
Field	JRU NAD27	Wellbore	No. 126H AWB
Facility	Drilling Island 1		

WELLPATH DATA (276 stations)

MD [ft]	Inclination [°]	Azimuth [°]	TVD [ft]	Vert Sect [ft]	North [ft]	East [ft]	Grid East [US ft]	Grid North [US ft]	Latitude	Longitude	DLS [°/100ft]	Comment
109.00	5.100	339.060	4100.78	59.95	159.69	-51.44	638968.47	502734.28	32°22'52.779"N	103°52'59.409"W	0.22	
203.00	4.790	337.750	4194.43	63.33	167.23	-54.42	638965.49	502741.81	32°22'52.854"N	103°52'59.444"W	0.35	
298.00	4.460	336.090	4289.12	66.70	174.27	-57.42	638962.49	502748.86	32°22'52.924"N	103°52'59.478"W	0.37	
392.00	4.270	335.660	4382.85	69.97	180.80	-60.34	638959.57	502755.39	32°22'52.989"N	103°52'59.512"W	0.21	
487.00	5.080	334.170	4477.53	73.64	187.81	-63.63	638956.28	502762.40	32°22'53.058"N	103°52'59.550"W	0.86	
581.00	5.060	332.770	4571.16	77.74	195.24	-67.34	638952.57	502769.83	32°22'53.132"N	103°52'59.593"W	0.13	
676.00	5.070	333.450	4665.79	81.93	202.72	-71.13	638948.77	502777.31	32°22'53.206"N	103°52'59.637"W	0.06	
771.00	4.800	332.820	4760.44	86.01	210.02	-74.82	638945.08	502784.60	32°22'53.278"N	103°52'59.680"W	0.29	
866.00	4.800	333.470	4855.10	89.98	217.11	-78.42	638941.49	502791.69	32°22'53.349"N	103°52'59.721"W	0.06	
960.00	4.650	333.210	4948.79	93.82	224.03	-81.89	638938.02	502798.61	32°22'53.417"N	103°52'59.761"W	0.16	
1055.00	5.370	338.750	5043.42	97.57	231.61	-85.24	638934.67	502806.19	32°22'53.493"N	103°52'59.800"W	0.91	
1150.00	5.350	338.640	5138.01	101.23	239.88	-88.46	638931.45	502814.46	32°22'53.574"N	103°52'59.837"W	0.02	
1245.00	5.030	332.270	5232.62	105.20	247.69	-92.01	638927.89	502822.27	32°22'53.652"N	103°52'59.878"W	0.69	
1339.00	5.130	338.890	5326.25	109.03	255.26	-95.44	638924.46	502829.84	32°22'53.727"N	103°52'59.918"W	0.63	
1433.00	5.310	341.220	5419.86	112.37	263.29	-98.36	638921.55	502837.87	32°22'53.807"N	103°52'59.951"W	0.30	
1527.00	5.540	339.150	5513.44	115.83	271.65	-101.37	638918.54	502846.23	32°22'53.889"N	103°52'59.986"W	0.32	
1622.00	4.900	340.670	5608.04	119.24	279.77	-104.35	638915.56	502854.35	32°22'53.970"N	103°53'00.020"W	0.69	
1717.00	5.380	341.320	5702.66	122.44	287.81	-107.12	638912.79	502862.39	32°22'54.050"N	103°53'00.052"W	0.51	
1811.00	4.870	338.490	5796.29	125.73	295.70	-109.99	638909.92	502870.28	32°22'54.128"N	103°53'00.086"W	0.61	
1906.00	4.260	341.210	5890.98	128.72	302.79	-112.61	638907.30	502877.37	32°22'54.198"N	103°53'00.116"W	0.68	
2001.00	4.690	342.990	5985.69	131.37	309.85	-114.88	638905.03	502884.43	32°22'54.268"N	103°53'00.142"W	0.48	
2096.00	5.990	346.090	6080.28	134.16	318.37	-117.21	638902.70	502892.95	32°22'54.352"N	103°53'00.169"W	1.40	
2191.00	5.820	344.110	6174.78	137.17	327.82	-119.72	638900.19	502902.39	32°22'54.446"N	103°53'00.197"W	0.28	
2285.00	5.460	343.720	6268.32	140.20	336.69	-122.28	638897.63	502911.27	32°22'54.534"N	103°53'00.227"W	0.39	
2380.00	4.920	346.130	6362.93	142.89	344.99	-124.52	638895.39	502919.56	32°22'54.616"N	103°53'00.252"W	0.61	
2474.00	4.380	345.780	6456.62	145.13	352.38	-126.37	638893.54	502926.96	32°22'54.689"N	103°53'00.274"W	0.58	
2569.00	4.960	344.070	6551.31	147.55	359.85	-128.39	638891.52	502934.42	32°22'54.763"N	103°53'00.297"W	0.63	
2664.00	4.730	345.800	6645.97	150.05	367.59	-130.47	638889.44	502942.17	32°22'54.840"N	103°53'00.321"W	0.29	
2758.00	5.500	347.050	6739.59	152.45	375.74	-132.43	638887.48	502950.31	32°22'54.921"N	103°53'00.343"W	0.83	
2853.00	5.520	346.060	6834.15	155.04	384.61	-134.55	638885.35	502959.18	32°22'55.009"N	103°53'00.368"W	0.10	
2948.00	5.320	345.840	6928.73	157.68	393.32	-136.73	638883.18	502967.89	32°22'55.095"N	103°53'00.393"W	0.21	
3042.00	5.160	343.600	7022.34	160.39	401.60	-138.99	638880.92	502976.17	32°22'55.177"N	103°53'00.418"W	0.28	
3137.00	4.930	346.980	7116.97	162.94	409.67	-141.12	638878.79	502984.24	32°22'55.257"N	103°53'00.443"W	0.40	
3232.00	5.460	340.900	7211.58	165.78	417.92	-143.52	638876.39	502992.49	32°22'55.339"N	103°53'00.470"W	0.80	
3327.00	5.040	336.220	7306.18	169.37	426.01	-146.68	638873.23	503000.58	32°22'55.419"N	103°53'00.507"W	0.63	
3421.00	4.240	331.090	7399.87	173.08	432.83	-150.02	638869.89	503007.40	32°22'55.486"N	103°53'00.546"W	0.96	
3516.00	4.050	332.960	7494.62	176.62	438.89	-153.25	638866.66	503013.46	32°22'55.546"N	103°53'00.583"W	0.25	
3611.00	4.530	331.830	7589.36	180.25	445.19	-156.54	638863.37	503019.76	32°22'55.609"N	103°53'00.621"W	0.51	
3705.00	5.030	336.690	7683.03	184.01	452.24	-159.93	638859.99	503026.81	32°22'55.679"N	103°53'00.660"W	0.68	
3800.00	4.010	338.330	7777.73	187.25	459.16	-162.80	638857.11	503033.72	32°22'55.747"N	103°53'00.693"W	1.08	
3895.00	4.870	345.620	7872.45	189.85	466.15	-165.03	638854.88	503040.72	32°22'55.817"N	103°53'00.719"W	1.08	
3989.00	4.830	339.750	7966.11	192.62	473.73	-167.39	638852.52	503048.29	32°22'55.892"N	103°53'00.746"W	0.53	
4084.00	4.500	329.340	8060.80	196.27	480.69	-170.67	638849.24	503055.25	32°22'55.961"N	103°53'00.784"W	0.95	
4179.00	5.250	324.540	8155.45	201.05	487.43	-175.10	638844.82	503062.00	32°22'56.028"N	103°53'00.835"W	0.90	
4261.00	5.700	317.900	8237.08	206.28	493.51	-180.00	638839.91	503068.07	32°22'56.088"N	103°53'00.892"W	0.95	



Actual Wellpath Report

No. 126H AWP

Page 4 of 8



BAKER HUGHES

REFERENCE WELLPATH IDENTIFICATION			
Operator	BOPCO, L.P.	Slot	JRU No.126H (Slot 4)
Area	Eddy County, NM	Well	No.126H (Slot 4)
Field	JRU NAD27	Wellbore	No. 126H AWP
Facility	Drilling Island 1		

WELLPATH DATA (276 stations)

MD [ft]	Inclination [°]	Azimuth [°]	TVD [ft]	Vert Sect [ft]	North [ft]	East [ft]	Grid East [US ft]	Grid North [US ft]	Latitude	Longitude	DLS [°/100ft]	Comment
293.00	7.600	303.600	8268.87	209.23	495.86	-182.83	638837.08	503070.42	32°22'56.111"N	103°53'00.925"W	7.83	
324.00	9.300	294.900	8299.53	213.32	498.05	-186.81	638833.10	503072.61	32°22'56.133"N	103°53'00.971"W	6.85	
356.00	10.900	289.200	8331.03	218.63	500.13	-192.01	638827.90	503074.70	32°22'56.154"N	103°53'01.032"W	5.89	
387.00	12.600	286.300	8361.38	224.74	502.05	-198.03	638821.89	503076.61	32°22'56.173"N	103°53'01.102"W	5.80	
419.00	14.100	283.300	8392.52	231.97	503.92	-205.17	638814.74	503078.49	32°22'56.192"N	103°53'01.185"W	5.16	
450.00	16.900	280.500	8422.39	240.16	505.61	-213.28	638806.64	503080.18	32°22'56.209"N	103°53'01.280"W	9.35	
482.00	19.700	278.700	8452.77	250.14	507.28	-223.19	638796.73	503081.84	32°22'56.226"N	103°53'01.395"W	8.93	
513.00	22.300	277.700	8481.71	261.20	508.86	-234.18	638785.74	503083.42	32°22'56.242"N	103°53'01.523"W	8.47	
545.00	24.000	277.700	8511.13	273.74	510.54	-246.65	638773.27	503085.10	32°22'56.259"N	103°53'01.668"W	5.31	
576.00	24.500	277.400	8539.39	286.44	512.21	-259.27	638760.65	503086.78	32°22'56.276"N	103°53'01.816"W	1.66	
608.00	25.300	277.900	8568.42	299.87	514.01	-272.62	638747.30	503088.57	32°22'56.295"N	103°53'01.971"W	2.59	
640.00	26.600	280.000	8597.19	313.79	516.19	-286.45	638733.47	503090.76	32°22'56.317"N	103°53'02.132"W	4.97	
671.00	27.700	282.500	8624.78	327.79	518.96	-300.32	638719.60	503093.52	32°22'56.345"N	103°53'02.294"W	5.11	
703.00	28.200	284.300	8653.04	342.54	522.43	-314.91	638705.01	503097.00	32°22'56.380"N	103°53'02.464"W	3.06	
734.00	29.600	286.500	8680.18	357.18	526.42	-329.35	638690.57	503100.98	32°22'56.420"N	103°53'02.632"W	5.67	
766.00	30.700	286.700	8707.85	372.80	531.01	-344.75	638675.17	503105.57	32°22'56.466"N	103°53'02.811"W	3.45	
797.00	31.400	286.400	8734.41	388.35	535.56	-360.08	638659.85	503110.13	32°22'56.512"N	103°53'02.990"W	2.31	
829.00	32.300	286.300	8761.59	404.79	540.32	-376.28	638643.65	503114.88	32°22'56.559"N	103°53'03.179"W	2.82	
860.00	33.100	285.700	8787.68	421.11	544.93	-392.38	638627.55	503119.49	32°22'56.606"N	103°53'03.366"W	2.78	
892.00	33.600	285.300	8814.41	438.29	549.63	-409.33	638610.60	503124.19	32°22'56.653"N	103°53'03.564"W	1.71	
923.00	34.200	284.500	8840.14	455.22	554.08	-426.04	638593.89	503128.64	32°22'56.698"N	103°53'03.758"W	2.41	
955.00	36.200	282.900	8866.29	473.35	558.44	-443.96	638575.97	503133.00	32°22'56.741"N	103°53'03.967"W	6.88	
986.00	37.300	281.500	8891.13	491.66	562.36	-462.09	638557.84	503136.92	32°22'56.781"N	103°53'04.178"W	4.46	
1018.00	38.300	280.200	8916.41	511.09	566.05	-481.35	638538.58	503140.61	32°22'56.818"N	103°53'04.403"W	4.00	
1049.00	41.100	279.800	8940.26	530.75	569.48	-500.85	638519.09	503144.04	32°22'56.853"N	103°53'04.630"W	9.07	
1097.00	44.200	283.500	8975.57	562.88	576.08	-532.68	638487.26	503150.64	32°22'56.920"N	103°53'05.001"W	8.30	
1129.00	46.400	284.800	8998.07	585.20	581.64	-554.73	638465.21	503156.20	32°22'56.976"N	103°53'05.257"W	7.46	
1161.00	49.000	286.100	9019.61	608.32	587.95	-577.54	638442.40	503162.51	32°22'57.039"N	103°53'05.523"W	8.66	
1192.00	51.000	286.400	9039.54	631.44	594.60	-600.34	638419.61	503169.15	32°22'57.106"N	103°53'05.789"W	6.49	
1224.00	53.100	287.100	9059.21	655.96	601.87	-624.50	638395.45	503176.43	32°22'57.179"N	103°53'06.070"W	6.79	
1255.00	55.900	287.500	9077.21	680.42	609.38	-648.59	638371.36	503183.93	32°22'57.254"N	103°53'06.351"W	9.09	
1287.00	58.300	287.900	9094.59	706.41	617.54	-674.18	638345.76	503192.10	32°22'57.336"N	103°53'06.649"W	7.57	
1318.00	61.400	287.500	9110.16	732.35	625.69	-699.72	638320.23	503200.25	32°22'57.418"N	103°53'06.946"W	10.06	
1350.00	64.700	287.600	9124.66	759.97	634.29	-726.91	638293.04	503208.85	32°22'57.504"N	103°53'07.263"W	10.32	
1381.00	67.800	287.300	9137.15	787.45	642.80	-753.98	638265.98	503217.35	32°22'57.589"N	103°53'07.578"W	10.04	
1413.00	70.100	286.900	9148.64	816.42	651.58	-782.52	638237.44	503226.13	32°22'57.677"N	103°53'07.910"W	7.28	
1445.00	72.500	285.500	9158.90	845.94	660.03	-811.63	638208.33	503234.59	32°22'57.762"N	103°53'08.249"W	8.57	
1476.00	74.600	284.000	9167.68	875.06	667.60	-840.37	638179.59	503242.15	32°22'57.838"N	103°53'08.584"W	8.21	
1508.00	76.200	282.700	9175.74	905.53	674.75	-870.50	638149.46	503249.30	32°22'57.910"N	103°53'08.935"W	6.36	
1539.00	78.400	281.900	9182.56	935.37	681.19	-900.05	638119.92	503255.74	32°22'57.975"N	103°53'09.279"W	7.53	
1571.00	78.600	281.700	9188.94	966.37	687.60	-930.74	638089.22	503262.15	32°22'58.040"N	103°53'09.637"W	0.88	
1602.00	79.700	281.400	9194.77	996.48	693.70	-960.57	638059.40	503268.25	32°22'58.101"N	103°53'09.984"W	3.67	
1634.00	81.100	280.900	9200.11	1027.72	699.80	-991.53	638028.44	503274.35	32°22'58.163"N	103°53'10.345"W	4.64	
1666.00	82.000	280.500	9204.81	1059.09	705.68	-1022.63	637997.34	503280.23	32°22'58.222"N	103°53'10.707"W	3.07	
1697.00	82.600	279.600	9208.97	1089.59	711.04	-1052.88	637967.10	503285.59	32°22'58.277"N	103°53'11.060"W	3.47	



Actual Wellpath Report

No. 126H AWP

Page 5 of 8



BAKER HUGHES

REFERENCE WELLPATH IDENTIFICATION

Operator	BOPCO, L.P.	Slot	JRU No.126H (Slot 4)
Area	Eddy County, NM	Well	No.126H (Slot 4)
Field	JRU NAD27	Wellbore	No. 126H AWB
Facility	Drilling Island 1		

WELLPATH DATA (276 stations)

MD [ft]	Inclination [°]	Azimuth [°]	TVD [ft]	Vert Sect [ft]	North [ft]	East [ft]	Grid East [US ft]	Grid North [US ft]	Latitude	Longitude	DLS [°/100ft]	Comment
9729.00	82.700	279.300	9213.06	1121.13	716.25	-1084.18	637935.79	503290.80	32°22'58.330"N	103°53'11.425"W	0.98	
9760.00	83.600	278.900	9216.76	1151.74	721.11	-1114.58	637905.40	503295.66	32°22'58.379"N	103°53'11.779"W	3.17	
9792.00	85.700	277.700	9219.74	1183.46	725.71	-1146.10	637873.88	503300.26	32°22'58.426"N	103°53'12.146"W	7.55	
9824.00	88.300	276.800	9221.42	1215.33	729.74	-1177.80	637842.19	503304.29	32°22'58.467"N	103°53'12.516"W	8.60	
9855.00	89.500	276.000	9222.01	1246.27	733.20	-1208.60	637811.39	503307.75	32°22'58.502"N	103°53'12.875"W	4.65	
9887.00	90.700	274.200	9221.95	1278.25	736.04	-1240.47	637779.52	503310.59	32°22'58.532"N	103°53'13.246"W	6.76	
9950.00	91.400	273.800	9220.80	1341.23	740.44	-1303.30	637716.69	503314.99	32°22'58.578"N	103°53'13.979"W	1.28	
9981.00	91.700	274.400	9219.96	1372.22	742.65	-1334.21	637685.78	503317.20	32°22'58.601"N	103°53'14.339"W	2.16	
0076.00	90.500	272.200	9218.14	1467.19	748.12	-1429.03	637590.97	503322.67	32°22'58.659"N	103°53'15.444"W	2.64	
0171.00	91.200	271.900	9216.73	1562.16	751.52	-1523.96	637496.05	503326.07	32°22'58.697"N	103°53'16.551"W	0.80	
0265.00	92.400	271.900	9213.78	1656.10	754.63	-1617.86	637402.15	503329.18	32°22'58.731"N	103°53'17.646"W	1.28	
0360.00	90.200	270.800	9211.62	1751.02	756.87	-1712.80	637307.22	503331.42	32°22'58.757"N	103°53'18.753"W	2.59	
0454.00	90.800	270.110	9210.80	1844.92	757.62	-1806.79	637213.23	503332.16	32°22'58.769"N	103°53'19.849"W	0.97	
0549.00	89.200	268.200	9210.80	1939.69	756.22	-1901.78	637118.26	503330.76	32°22'58.759"N	103°53'20.956"W	2.62	
0643.00	89.800	268.500	9211.62	2033.36	753.51	-1995.73	637024.31	503328.06	32°22'58.736"N	103°53'22.052"W	0.71	
0738.00	89.900	268.000	9211.87	2128.02	750.61	-2090.69	636929.36	503325.16	32°22'58.711"N	103°53'23.159"W	0.54	
0833.00	90.500	267.900	9211.54	2222.64	747.21	-2185.63	636834.43	503321.76	32°22'58.681"N	103°53'24.267"W	0.64	
0928.00	88.200	268.400	9212.62	2317.28	744.14	-2280.56	636739.50	503318.69	32°22'58.655"N	103°53'25.374"W	2.48	
1022.00	89.100	268.600	9214.83	2410.95	741.68	-2374.50	636645.56	503316.23	32°22'58.634"N	103°53'26.469"W	0.98	
1117.00	89.800	268.300	9215.74	2505.64	739.11	-2469.47	636550.61	503313.66	32°22'58.613"N	103°53'27.577"W	0.80	
1211.00	90.500	268.700	9215.50	2599.33	736.65	-2563.43	636456.65	503311.20	32°22'58.592"N	103°53'28.673"W	0.86	
1306.00	90.400	268.500	9214.75	2694.04	734.33	-2658.40	636361.69	503308.88	32°22'58.573"N	103°53'29.780"W	0.24	
1401.00	90.700	268.200	9213.84	2788.71	731.60	-2753.36	636266.74	503306.15	32°22'58.550"N	103°53'30.887"W	0.45	
1496.00	90.300	269.700	9213.01	2883.46	729.86	-2848.33	636171.77	503304.40	32°22'58.537"N	103°53'31.995"W	1.63	
1590.00	90.900	270.100	9212.02	2977.31	729.69	-2942.33	636077.78	503304.24	32°22'58.539"N	103°53'33.091"W	0.77	
1685.00	92.100	270.600	9209.54	3072.16	730.27	-3037.29	635982.82	503304.82	32°22'58.548"N	103°53'34.198"W	1.37	
1779.00	90.800	271.600	9207.16	3166.08	732.08	-3131.24	635888.88	503306.62	32°22'58.570"N	103°53'35.294"W	1.74	
1874.00	92.000	272.000	9204.84	3261.02	735.06	-3226.16	635793.96	503309.61	32°22'58.604"N	103°53'36.401"W	1.33	
1969.00	90.800	271.500	9202.52	3355.97	737.96	-3321.09	635699.05	503312.51	32°22'58.636"N	103°53'37.507"W	1.37	
2064.00	91.500	271.400	9200.61	3450.91	740.36	-3416.04	635604.10	503314.91	32°22'58.664"N	103°53'38.614"W	0.74	
2158.00	90.200	271.500	9199.22	3544.86	742.74	-3510.00	635510.15	503317.29	32°22'58.691"N	103°53'39.710"W	1.39	
2253.00	90.700	271.200	9198.47	3639.81	744.98	-3604.97	635415.19	503319.53	32°22'58.717"N	103°53'40.817"W	0.61	
2348.00	90.000	270.400	9197.89	3734.73	746.31	-3699.95	635320.21	503320.85	32°22'58.734"N	103°53'41.925"W	1.12	
2442.00	90.500	270.500	9197.48	3828.63	747.04	-3793.95	635226.22	503321.59	32°22'58.745"N	103°53'43.021"W	0.54	
2537.00	89.700	270.300	9197.31	3923.53	747.71	-3888.95	635131.23	503322.25	32°22'58.756"N	103°53'44.128"W	0.87	
2632.00	89.900	269.800	9197.65	4018.39	747.79	-3983.95	635036.24	503322.34	32°22'58.760"N	103°53'45.236"W	0.57	
2726.00	91.700	270.100	9196.33	4112.24	747.71	-4077.93	634942.26	503322.26	32°22'58.763"N	103°53'46.332"W	1.94	
2905.00	89.900	268.700	9193.83	4290.84	745.83	-4256.89	634763.31	503320.38	32°22'58.752"N	103°53'48.419"W	1.27	
3000.00	90.100	268.300	9193.83	4385.54	743.35	-4351.86	634668.35	503317.89	32°22'58.731"N	103°53'49.527"W	0.47	
3095.00	92.200	269.600	9191.93	4480.26	741.61	-4446.82	634573.40	503316.15	32°22'58.718"N	103°53'50.634"W	2.60	
3191.00	92.300	270.500	9188.16	4576.05	741.69	-4542.74	634477.48	503316.24	32°22'58.722"N	103°53'51.752"W	0.94	
3286.00	89.700	269.100	9186.50	4670.87	741.36	-4637.72	634382.51	503315.91	32°22'58.723"N	103°53'52.860"W	3.11	
3381.00	90.000	268.200	9186.75	4765.59	739.12	-4732.69	634287.54	503313.67	32°22'58.705"N	103°53'53.967"W	1.00	
3476.00	91.900	269.500	9185.17	4860.31	737.21	-4827.65	634192.59	503311.76	32°22'58.690"N	103°53'55.075"W	2.42	
3571.00	90.500	270.600	9183.18	4955.15	737.30	-4922.63	634097.62	503311.84	32°22'58.694"N	103°53'56.182"W	1.87	



Actual Wellpath Report

No. 126H AWP

Page 6 of 8



BAKER HUGHES

REFERENCE WELLPATH IDENTIFICATION			
Operator	BOPCO, L.P.	Slot	JRU No.126H (Slot 4)
Area	Eddy County, NM	Well	No.126H (Slot 4)
Field	JRU NAD27	Wellbore	No. 126H AWB
Locality	Drilling Island 1		

WELLPATH DATA (276 stations)

MD [ft]	Inclination [°]	Azimuth [°]	TVD [ft]	Vert Sect [ft]	North [ft]	East [ft]	Grid East [US ft]	Grid North [US ft]	Latitude	Longitude	DLS [°/100ft]	Comment
3667.00	89.700	271.700	9183.02	5051.09	739.22	-5018.61	634001.65	503313.77	32°22'58.717"N	103°53'57.301"W	1.42	
3762.00	90.100	271.800	9183.18	5146.07	742.12	-5113.56	633906.70	503316.67	32°22'58.750"N	103°53'58.409"W	0.43	
3857.00	89.600	273.000	9183.43	5241.06	746.10	-5208.47	633811.79	503320.65	32°22'58.793"N	103°53'59.515"W	1.37	
3952.00	89.600	274.100	9184.09	5336.05	751.98	-5303.29	633716.99	503326.53	32°22'58.855"N	103°54'00.620"W	1.16	
4047.00	89.700	275.700	9184.67	5431.00	760.10	-5397.94	633622.35	503334.64	32°22'58.939"N	103°54'01.724"W	1.69	
4142.00	89.100	276.900	9185.67	5525.84	770.52	-5492.36	633527.93	503345.07	32°22'59.046"N	103°54'02.824"W	1.41	
4237.00	89.100	276.700	9187.16	5620.63	781.77	-5586.68	633433.62	503356.31	32°22'59.161"N	103°54'03.924"W	0.21	
4332.00	89.000	276.900	9188.74	5715.42	793.02	-5680.99	633339.31	503367.56	32°22'59.276"N	103°54'05.023"W	0.24	
4427.00	88.700	273.300	9190.64	5810.32	801.46	-5775.58	633244.73	503376.00	32°22'59.363"N	103°54'06.125"W	3.80	
4522.00	89.500	269.200	9192.14	5905.24	803.53	-5870.53	633149.79	503378.07	32°22'59.388"N	103°54'07.232"W	4.40	
4617.00	89.900	269.500	9192.63	6000.04	802.45	-5965.52	633054.80	503376.99	32°22'59.381"N	103°54'08.340"W	0.53	
4712.00	89.600	267.900	9193.05	6094.76	800.30	-6060.49	632959.84	503374.84	32°22'59.363"N	103°54'09.448"W	1.71	
4807.00	90.400	265.900	9193.05	6189.20	795.16	-6155.35	632864.99	503369.70	32°22'59.316"N	103°54'10.554"W	2.27	
4903.00	90.100	263.700	9192.63	6284.19	786.46	-6250.95	632769.40	503361.00	32°22'59.234"N	103°54'11.669"W	2.31	
4998.00	90.300	262.800	9192.30	6377.79	775.29	-6345.29	632675.06	503349.84	32°22'59.127"N	103°54'12.770"W	0.97	
5093.00	90.700	264.100	9191.47	6471.45	764.46	-6439.66	632580.70	503339.00	32°22'59.024"N	103°54'13.871"W	1.43	
5188.00	90.900	265.500	9190.14	6565.45	755.85	-6534.26	632486.11	503330.39	32°22'58.942"N	103°54'14.974"W	1.49	
5283.00	91.000	264.700	9188.57	6659.51	747.73	-6628.90	632391.47	503322.28	32°22'58.866"N	103°54'16.078"W	0.85	
5379.00	90.600	263.600	9187.23	6754.34	737.95	-6724.38	632295.99	503312.50	32°22'58.773"N	103°54'17.192"W	1.22	
5474.00	91.200	263.300	9185.74	6847.99	727.12	-6818.75	632201.63	503301.66	32°22'58.669"N	103°54'18.293"W	0.71	
5569.00	91.100	266.600	9183.83	6942.00	718.76	-6913.35	632107.04	503293.31	32°22'58.590"N	103°54'19.396"W	3.47	
5665.00	90.400	269.800	9182.57	7037.63	715.74	-7009.28	632011.11	503290.29	32°22'58.564"N	103°54'20.515"W	3.41	
5760.00	89.900	268.500	9182.32	7132.40	714.33	-7104.27	631916.13	503288.88	32°22'58.554"N	103°54'21.623"W	1.47	
5855.00	90.300	268.700	9182.16	7227.11	712.01	-7199.24	631821.17	503286.56	32°22'58.535"N	103°54'22.730"W	0.47	
5950.00	90.200	269.900	9181.74	7321.90	710.85	-7294.23	631726.18	503285.40	32°22'58.527"N	103°54'23.838"W	1.27	
6045.00	91.100	271.700	9180.66	7416.82	712.18	-7389.21	631631.21	503286.73	32°22'58.544"N	103°54'24.946"W	2.12	
6137.00	90.400	274.500	9179.46	7508.80	717.15	-7481.06	631539.37	503291.70	32°22'58.597"N	103°54'26.016"W	3.14	
6229.00	90.500	274.500	9178.74	7600.77	724.37	-7572.77	631447.66	503298.92	32°22'58.672"N	103°54'27.085"W	0.11	
6322.00	90.300	274.500	9178.09	7693.74	731.67	-7665.48	631354.96	503306.21	32°22'58.748"N	103°54'28.166"W	0.22	
6417.00	89.000	273.200	9178.67	7788.72	738.04	-7760.26	631260.19	503312.59	32°22'58.814"N	103°54'29.271"W	1.94	
6513.00	89.400	272.600	9180.01	7884.71	742.90	-7856.13	631164.33	503317.45	32°22'58.866"N	103°54'30.389"W	0.75	
6605.00	91.000	271.800	9179.69	7976.70	746.43	-7948.06	631072.40	503320.98	32°22'58.905"N	103°54'31.461"W	1.94	
6700.00	91.500	271.900	9177.62	8071.65	749.50	-8042.99	630977.48	503324.05	32°22'58.939"N	103°54'32.567"W	0.54	
6796.00	91.700	271.700	9174.93	8167.59	752.51	-8138.90	630881.57	503327.06	32°22'58.972"N	103°54'33.686"W	0.29	
6891.00	92.700	271.300	9171.29	8262.48	755.00	-8233.80	630786.69	503329.54	32°22'59.001"N	103°54'34.792"W	1.13	
6986.00	93.200	270.800	9166.40	8357.30	756.74	-8328.65	630691.83	503331.28	32°22'59.022"N	103°54'35.898"W	0.74	
7081.00	92.200	269.800	9161.92	8452.08	757.23	-8423.55	630596.95	503331.78	32°22'59.030"N	103°54'37.005"W	1.49	
7177.00	90.900	269.600	9159.33	8547.87	756.73	-8519.51	630501.00	503331.28	32°22'59.029"N	103°54'38.124"W	1.37	
7272.00	89.200	268.400	9159.24	8642.63	755.07	-8614.49	630406.02	503329.62	32°22'59.016"N	103°54'39.231"W	2.19	
7367.00	89.300	267.900	9160.49	8737.27	752.01	-8709.43	630311.09	503326.55	32°22'58.990"N	103°54'40.338"W	0.54	
7462.00	89.200	266.700	9161.73	8831.77	747.53	-8804.31	630216.21	503322.08	32°22'58.949"N	103°54'41.445"W	1.27	
7558.00	90.100	266.000	9162.32	8927.11	741.42	-8900.12	630120.41	503315.97	32°22'58.892"N	103°54'42.562"W	1.19	
7653.00	90.600	265.900	9161.74	9021.37	734.71	-8994.88	630025.66	503309.26	32°22'58.830"N	103°54'43.668"W	0.54	
7748.00	90.200	265.500	9161.07	9115.58	727.59	-9089.61	629930.94	503302.14	32°22'58.763"N	103°54'44.773"W	0.60	
7843.00	89.800	265.100	9161.07	9209.70	719.80	-9184.29	629836.26	503294.35	32°22'58.690"N	103°54'45.877"W	0.60	



Actual Wellpath Report

No. 126H AWP

Page 7 of 8



BAKER HUGHES

REFERENCE WELLPATH IDENTIFICATION

Operator	BOPCO, L.P.	Slot	JRU No.126H (Slot 4)
Area	Eddy County, NM	Well	No.126H (Slot 4)
Field	JRU NAD27	Wellbore	No. 126H AWB
Facility	Drilling Island 1		

WELLPATH DATA (276 stations)

MD [ft]	Inclination [°]	Azimuth [°]	TVD [ft]	Vert Sect [ft]	North [ft]	East [ft]	Grid East [US ft]	Grid North [US ft]	Latitude	Longitude	DLS [°/100ft]	Comment
7938.00	89.300	265.300	9161.82	9303.80	711.85	-9278.95	629741.61	503286.40	32°22'58.615"N	103°54'46.981"W	0.57	
8034.00	89.700	265.100	9162.66	9398.89	703.82	-9374.61	629645.95	503278.37	32°22'58.539"N	103°54'48.097"W	0.47	
8129.00	89.700	265.400	9163.16	9493.00	695.96	-9469.28	629551.29	503270.51	32°22'58.465"N	103°54'49.201"W	0.32	
8224.00	88.900	266.800	9164.32	9587.29	689.49	-9564.05	629456.53	503264.05	32°22'58.404"N	103°54'50.307"W	1.70	
8319.00	88.900	268.600	9166.14	9681.85	685.68	-9658.95	629361.63	503260.23	32°22'58.370"N	103°54'51.414"W	1.89	
8414.00	89.200	271.100	9167.71	9776.68	685.43	-9753.93	629266.66	503259.99	32°22'58.372"N	103°54'52.521"W	2.65	
8509.00	89.600	272.500	9168.71	9871.65	688.42	-9848.88	629171.72	503262.97	32°22'58.405"N	103°54'53.628"W	1.53	
8605.00	89.600	272.700	9169.38	9967.64	692.77	-9944.78	629075.83	503267.32	32°22'58.452"N	103°54'54.746"W	0.21	
8700.00	90.500	273.900	9169.30	10062.64	698.24	-10039.62	628980.99	503272.79	32°22'58.509"N	103°54'55.852"W	1.58	
8795.00	91.100	273.700	9167.97	10157.62	704.54	-10134.40	628886.22	503279.09	32°22'58.575"N	103°54'56.957"W	0.67	
8890.00	91.100	273.200	9166.15	10252.60	710.25	-10229.21	628791.42	503284.80	32°22'58.636"N	103°54'58.062"W	0.53	
8985.00	91.100	272.800	9164.32	10347.58	715.22	-10324.06	628696.57	503289.77	32°22'58.688"N	103°54'59.168"W	0.42	
9081.00	91.100	272.400	9162.48	10443.56	719.58	-10419.94	628600.69	503294.13	32°22'58.735"N	103°55'00.286"W	0.42	
9176.00	90.600	271.600	9161.07	10538.53	722.89	-10514.87	628505.77	503297.44	32°22'58.772"N	103°55'01.392"W	0.99	
9271.00	90.100	271.200	9160.49	10633.49	725.21	-10609.84	628410.81	503299.76	32°22'58.798"N	103°55'02.500"W	0.67	
9367.00	90.700	271.000	9159.82	10729.43	727.06	-10705.82	628314.83	503301.60	32°22'58.820"N	103°55'03.619"W	0.66	
9462.00	91.600	270.700	9157.91	10824.34	728.47	-10800.79	628219.87	503303.01	32°22'58.838"N	103°55'04.726"W	1.00	
9557.00	92.800	270.800	9154.27	10919.19	729.71	-10895.71	628124.96	503304.26	32°22'58.854"N	103°55'05.833"W	1.27	
9653.00	90.900	271.300	9151.17	11015.07	731.47	-10991.64	628029.04	503306.01	32°22'58.875"N	103°55'06.952"W	2.05	
9748.00	90.800	271.500	9149.76	11110.02	733.79	-11086.60	627934.08	503308.33	32°22'58.901"N	103°55'08.059"W	0.24	
9843.00	90.800	272.400	9148.43	11204.99	737.02	-11181.54	627839.15	503311.57	32°22'58.937"N	103°55'09.166"W	0.95	
9938.00	90.700	273.000	9147.19	11299.98	741.49	-11276.42	627744.27	503316.04	32°22'58.985"N	103°55'10.272"W	0.64	
10032.00	90.700	272.700	9146.04	11393.97	746.17	-11370.30	627650.40	503320.71	32°22'59.035"N	103°55'11.366"W	0.32	
10128.00	90.100	269.900	9145.37	11489.91	748.34	-11466.26	627554.45	503322.89	32°22'59.060"N	103°55'12.485"W	2.98	
10223.00	90.100	269.900	9145.20	11584.77	748.18	-11561.26	627459.46	503322.73	32°22'59.062"N	103°55'13.593"W	0.00	
10318.00	90.300	270.300	9144.87	11679.64	748.34	-11656.26	627364.46	503322.89	32°22'59.067"N	103°55'14.701"W	0.47	
10413.00	90.700	270.500	9144.04	11774.53	749.01	-11751.26	627269.48	503323.56	32°22'59.078"N	103°55'15.808"W	0.47	
10508.00	90.800	270.500	9142.80	11869.43	749.84	-11846.24	627174.49	503324.38	32°22'59.089"N	103°55'16.916"W	0.11	
10603.00	90.400	270.600	9141.81	11964.33	750.75	-11941.23	627079.51	503325.30	32°22'59.102"N	103°55'18.024"W	0.43	
10698.00	90.300	270.400	9141.22	12059.23	751.58	-12036.23	626984.52	503326.12	32°22'59.114"N	103°55'19.131"W	0.24	
10793.00	89.400	271.100	9141.47	12154.15	752.82	-12131.22	626889.54	503327.37	32°22'59.130"N	103°55'20.239"W	1.20	
10888.00	89.000	270.900	9142.80	12249.08	754.48	-12226.19	626794.57	503329.03	32°22'59.150"N	103°55'21.346"W	0.47	
10983.00	89.000	271.200	9144.46	12344.00	756.22	-12321.16	626699.61	503330.77	32°22'59.171"N	103°55'22.454"W	0.32	
11078.00	89.000	270.900	9146.12	12438.93	757.96	-12416.13	626604.65	503332.51	32°22'59.191"N	103°55'23.561"W	0.32	
11172.00	89.100	269.800	9147.67	12532.81	758.53	-12510.12	626510.67	503333.08	32°22'59.201"N	103°55'24.657"W	1.17	
11267.00	89.100	268.400	9149.17	12627.56	757.04	-12605.09	626415.70	503331.59	32°22'59.189"N	103°55'25.764"W	1.47	
11362.00	89.800	267.900	9150.08	12722.21	753.98	-12700.04	626320.76	503328.52	32°22'59.163"N	103°55'26.872"W	0.91	
11456.00	90.300	268.300	9150.00	12815.85	750.86	-12793.98	626226.82	503325.41	32°22'59.135"N	103°55'27.967"W	0.68	
11550.00	90.500	269.600	9149.34	12909.60	749.14	-12887.96	626132.85	503323.68	32°22'59.122"N	103°55'29.063"W	1.40	
11644.00	90.400	271.200	9148.60	13003.49	749.79	-12981.96	626038.86	503324.34	32°22'59.132"N	103°55'30.159"W	1.71	
11739.00	90.300	270.600	9148.02	13098.42	751.29	-13076.94	625943.88	503325.83	32°22'59.150"N	103°55'31.267"W	0.64	
11833.00	90.200	271.100	9147.61	13192.35	752.68	-13170.93	625849.90	503327.23	32°22'59.168"N	103°55'32.363"W	0.54	
11927.00	90.100	271.100	9147.37	13286.29	754.48	-13264.91	625755.93	503329.03	32°22'59.189"N	103°55'33.458"W	0.11	
12022.00	90.300	271.300	9147.03	13381.24	756.47	-13359.89	625660.95	503331.02	32°22'59.212"N	103°55'34.566"W	0.30	
12116.00	90.000	269.200	9146.79	13475.12	756.88	-13453.88	625566.97	503331.43	32°22'59.220"N	103°55'35.662"W	2.26	



Actual Wellpath Report

No. 126H AWP

Page 8 of 8



REFERENCE WELLPATH IDENTIFICATION

Operator	BOPCO, L.P.	Slot	JRU No.126H (Slot 4)
Area	Eddy County, NM	Well	No.126H (Slot 4)
Field	JRU NAD27	Wellbore	No. 126H AWB
Facility	Drilling Island 1		

WELLPATH DATA (276 stations)

MD [ft]	Inclination [°]	Azimuth [°]	TVD [ft]	Vert Sect [ft]	North [ft]	East [ft]	Grid East [US ft]	Grid North [US ft]	Latitude	Longitude	DLS [°/100ft]	Comment
2210.00	90.100	267.900	9146.71	13568.82	754.51	-13547.85	625473.01	503329.05	32°22'59.200"N	103°55'36.758"W	1.39	
2304.00	90.100	269.600	9146.54	13662.55	752.45	-13641.83	625379.04	503327.00	32°22'59.183"N	103°55'37.854"W	1.81	
2398.00	90.000	270.700	9146.46	13756.43	752.70	-13735.82	625285.05	503327.25	32°22'59.189"N	103°55'38.950"W	1.18	
2493.00	89.900	271.400	9146.54	13851.37	754.44	-13830.81	625190.07	503328.99	32°22'59.210"N	103°55'40.057"W	0.74	
2515.00	90.000	271.500	9146.56	13873.36	755.00	-13852.80	625168.08	503329.54	32°22'59.216"N	103°55'40.314"W	0.64	
2593.00	90.000	271.500	9146.56	13951.33	757.04	-13930.77	625090.11	503331.59	32°22'59.239"N	103°55'41.223"W	0.00	Proj to Bit

TARGETS

Name	MD [ft]	TVD [ft]	North [ft]	East [ft]	Grid East [US ft]	Grid North [US ft]	Latitude	Longitude	Shape
JRU No.126H PBHL		9145.00	750.25	-13932.69	625088.20	503324.80	32°22'59.172"N	103°55'41.245"W	point

WELLPATH COMPOSITION - Ref Wellbore: No. 126H AWB Ref Wellpath: No. 126H AWP

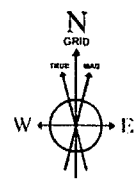
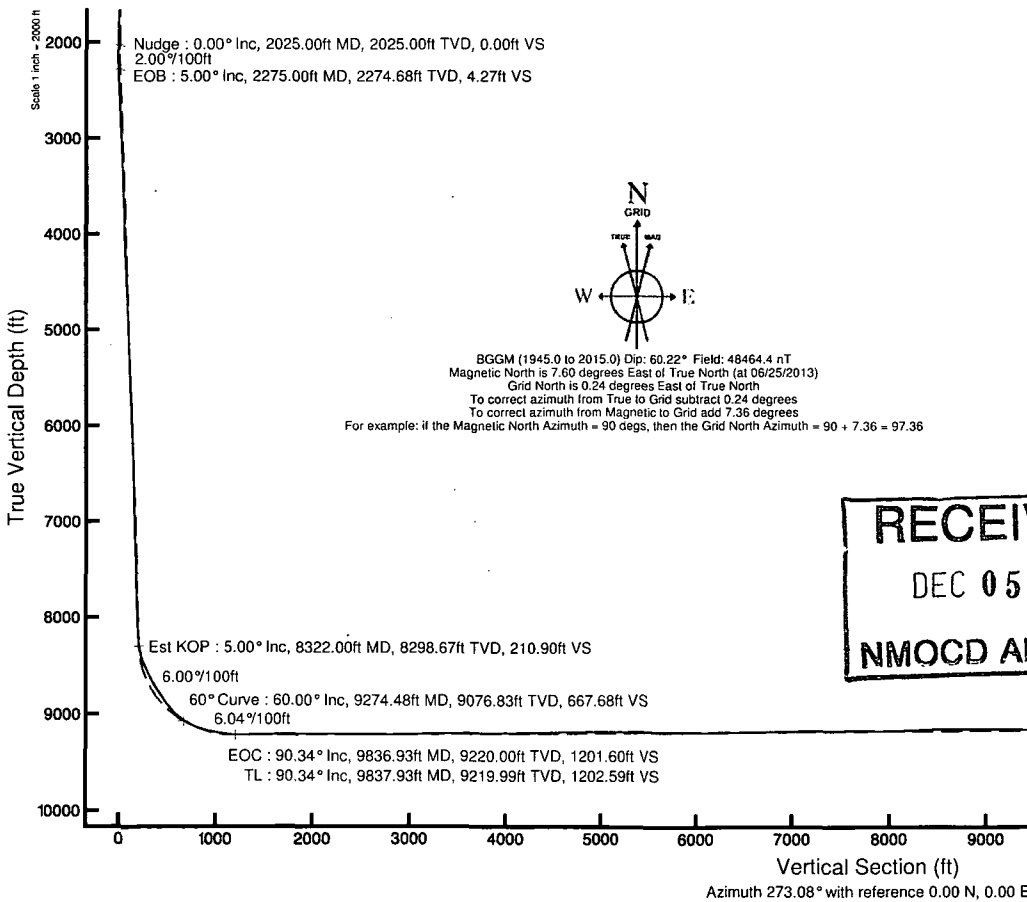
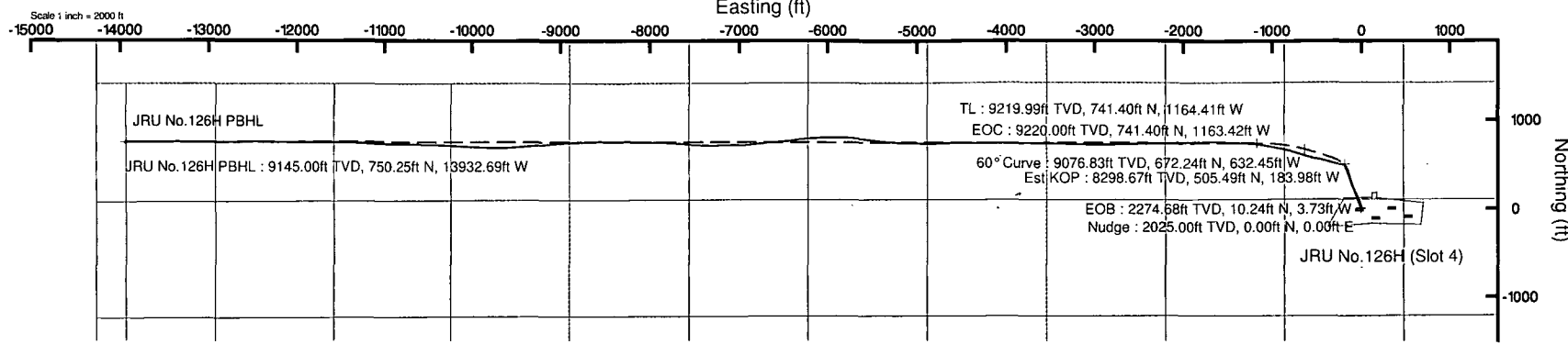
Start MD [ft]	End MD [ft]	Positional Uncertainty Model	Log Name/Comment	Wellbore
25.00	430.00	Generic gyro - northseeking (Standard)	Unknown Gyros <100-430>	No. 126H AWB
430.00	22515.00	NaviTrak (Standard)	BHI MWD NaviTrak <561-XXXX>	No. 126H AWB
22515.00	22593.00	Blind Drilling (std)	Projection to bit	No. 126H AWB



BOPCO, L.P.

Location: Eddy County, NM
 Field: JRU NAD27
 Facility: JRU Pad

Slot: JRU No.126H (Slot 4)
 Well: No.126H (Slot 4)
 Wellbore: No.126H PWB (Slot 4)



BGGM (1945.0 to 2015.0) Dip: 60.22° Field: 48464.4 nT
 Magnetic North is 7.60 degrees East of True North (at 06/25/2013)
 Grid North is 0.24 degrees East of True North
 To correct azimuth from True to Grid subtract 0.24 degrees
 To correct azimuth from Magnetic to Grid add 7.36 degrees
 For example: if the Magnetic North Azimuth = 90 degs, then the Grid North Azimuth = 90 + 7.36 = 97.36

Well Profile Data								
Design Comment	MD (ft)	Inc (°)	Az (°)	TVD (ft)	Local N (ft)	Local E (ft)	DLS (°/100ft)	VS (ft)
Tie On	25.00	0.000	340.000	25.00	0.00	0.00	0.00	0.00
Nudge	2025.00	0.000	340.000	2025.00	0.00	0.00	0.00	0.00
EOB	2275.00	5.000	340.000	2274.68	10.24	-3.73	2.00	4.27
Est KOP	8322.00	5.000	340.000	8298.67	505.49	-183.98	0.00	210.90
60° Curve	9274.48	60.000	286.000	9076.83	672.24	-632.45	6.00	667.68
EOC	9836.93	90.337	270.000	9220.00	741.40	-1163.42	6.04	1201.60
TL	9837.93	90.337	270.040	9219.99	741.40	-1164.41	4.00	1202.59
JRU No.126H PBHL	22606.43	90.337	270.040	9145.00	750.25	-13932.69	0.00	13952.87

Plot reference wellpath is Rev-I.0	
True vertical depths are referenced to Rig on No.4H SHL (KB)	Grid System: NAD27 / TM New Mexico SP, Eastern Zone (3001), US feet
Measured depths are referenced to Rig on No.4H SHL (KB)	North Reference: Grid north
Rig on No.4H SHL (KB) to Mean Sea Level: 3190 feet	Scale: True distance
Mean Sea Level to Mud line (At Slot, JRU No.126H (Slot 4)): 0 feet	Depths are in feet
Coordinates are in feet referenced to Slot	Created by: genby on 07/16/2013

RECEIVED
 DEC 05 2013
NMOCD ARTESIA

JRU No.126H PBHL
 JRU No.126H PBHL : 90.34° Inc, 22606.43ft MD, 9145.00ft TVD, 13952.87ft VS

Vertical Section (ft)
 Azimuth 273.08° with reference 0.00 N, 0.00 E