

DISTRICT I
1625 N. French Dr., Hobbs, NM 88240
Phone (576) 393-6181 Fax: (576) 393-0720

DISTRICT II
1301 W. Grand Avenue, Artesia, NM 88210
Phone (505) 746-1283 Fax: (505) 748-9720

DISTRICT III
1000 Rio Brazos Rd., Aztec, NM 87410
Phone (505) 334-6178 Fax: (505) 334-6170

DISTRICT IV
1220 S. St. Francis Dr., Santa Fe, NM 87505
Phone (505) 476-3460 Fax: (505) 476-3462

State of New Mexico
Energy, Minerals and Natural Resources Department

RECEIVED
FEB 12 2014
Submission one copy to appropriate District Office

Form C-102
Revised August 1, 2011
Submission one copy to appropriate District Office

OIL CONSERVATION DIVISION
1220 South St. Francis, **MOCCO ARTESIA**
Santa Fe, New Mexico 87505

WELL LOCATION AND ACREAGE DEDICATION PLAT

AMENDED REPORT

API Number 30-015-42059	Pool Code 30215	Pool Name Hay Hollow; Undesignated 2nd Bone Springs
Property Code 38216	Property Name CHAMAELEON "BIN" STATE COM	
OGRID No. 025575	Operator Name YATES PETROLEUM CORP.	
		Well Number 2H
		Elevation 3110'

Surface Location

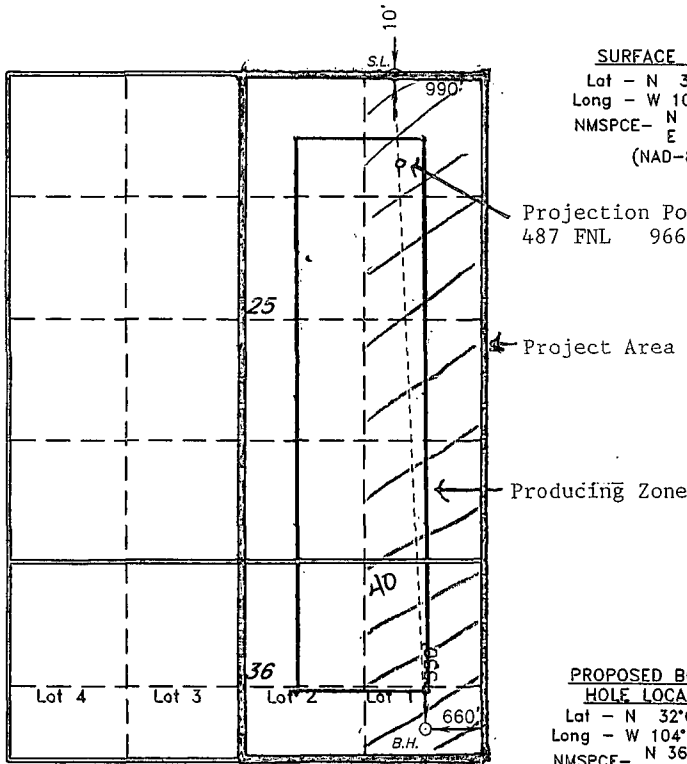
UL or lot No.	Section	Township	Range	Lot Idn	Feet from the	North/South line	Feet from the	East/West line	County
A	25	26 S	27 E		10	NORTH	990	EAST	EDDY

Bottom Hole Location If Different From Surface

UL or lot No.	Section	Township	Range	Lot Idn	Feet from the	North/South line	Feet from the	East/West line	County
LOT 1	36	26 S	27 E		330	SOUTH	660	EAST	EDDY

Dedicated Acres	Joint or Infill	Consolidation Code	Order No.
160	224.02		

NO ALLOWABLE WILL BE ASSIGNED TO THIS COMPLETION UNTIL ALL INTERESTS HAVE BEEN CONSOLIDATED OR A NON-STANDARD UNIT HAS BEEN APPROVED BY THE DIVISION



SURFACE LOCATION
Lat - N 32°01'13.55"
Long - W 104°08'18.06"
NMSPC- N 371226.09
E 601766.64
(NAD-83)

Projection Point
487 FNL 966 FEL

Project Area

Producing Zone

PROPOSED BOTTOM HOLE LOCATION
Lat - N 32°00'03.20"
Long - W 104°08'14.13"
NMSPC- N 364117.68
E 602118.10
(NAD-83)

OPERATOR CERTIFICATION

I hereby certify that the information contained herein is true and complete to the best of my knowledge and belief, and that this organization either owns a working interest or unleased mineral interest in the land including the proposed bottom hole location or has a right to drill this well at this location pursuant to a contract with an owner of such a mineral or working interest, or to a voluntary pooling agreement or a compulsory pooling order heretofore entered by the division.

Bill McCrory
Signature Date

Bill McCrory

Printed Name

bmcrrory@yatespetroleum.com
Email Address

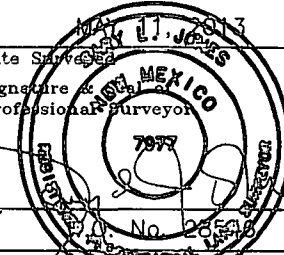
SURVEYOR CERTIFICATION

I hereby certify that the well location shown on this plat was plotted from field notes of actual surveys made by me or under my supervision, and that the same is true and correct to the best of my belief.

Date Surveyed
Signature
Professional Surveyor

Gary L. Jones
Signature
Professional Surveyor

Certificate No. Gary L. Jones 7977



Well Name: Chamaeleon BIN State Com #2H	Tgt N-S: -7108.41	EOC TVD/MD: 7715.34 / 7987.54
Surface Location: Section 25 , Township 26S Range 27E	Tgt E-W: 351.46	
Bottom Hole Location: Section 36 , Township 26S Range 27E	VS: 7117.09	EOL TVD/MD: 7720.00 / 14627.50
	VS Az: 177.17	

MD	Inc	Azi	TVD	N/S	E/W	VS	DLS	Comments
0	0	0	0	0	0	0	0	
402.00	0.00	0.00	402.00	0.00	0.00	0.00	0.00	CASTILLE/LM/SD
1500.00	0.00	0.00	1500.00	0.00	0.00	0.00	0.00	TOS
2070.00	0.00	0.00	2070.00	0.00	0.00	0.00	0.00	BOS
2200.00	0.00	0.00	2200.00	0.00	0.00	0.00	0.00	LAMAR
2246.00	0.00	0.00	2246.00	0.00	0.00	0.00	0.00	BELL CANYON
3044.00	0.00	0.00	3044.00	0.00	0.00	0.00	0.00	CHERRY CANYON
3230.00	0.00	0.00	3230.00	0.00	0.00	0.00	0.00	MANZANITA MARKER
4752.00	0.00	0.00	4752.00	0.00	0.00	0.00	0.00	BRUSHY CANYON
5930.00	0.00	0.00	5930.00	0.00	0.00	0.00	0.00	BONE SPRING
6060.00	0.00	0.00	6060.00	0.00	0.00	0.00	0.00	AVALON
6794.00	0.00	0.00	6794.00	0.00	0.00	0.00	0.00	BONE SPRING 1/SD/
7237.87	0.00	0.00	7237.87	0.00	0.00	0.00	0.00	KOP
7250.00	1.46	177.17	7250.00	-0.15	0.01	0.15	12.00	
7275.00	4.46	177.17	7274.96	-1.44	0.07	1.44	12.00	
7300.00	7.46	177.17	7299.82	-4.03	0.20	4.04	12.00	
7325.00	10.46	177.17	7324.52	-7.92	0.39	7.93	12.00	
7350.00	13.46	177.17	7348.97	-13.09	0.65	13.11	12.00	
7375.00	16.46	177.17	7373.12	-19.53	0.97	19.56	12.00	
7400.00	19.46	177.17	7396.90	-27.23	1.35	27.26	12.00	
7425.00	22.46	177.17	7420.25	-36.16	1.79	36.20	12.00	
7450.00	25.46	177.17	7443.09	-46.30	2.29	46.35	12.00	
7475.00	28.46	177.17	7465.37	-57.61	2.85	57.68	12.00	
7500.00	31.46	177.17	7487.03	-70.08	3.46	70.17	12.00	
7525.00	34.46	177.17	7508.00	-83.66	4.14	83.76	12.00	
7550.00	37.46	177.17	7528.24	-98.32	4.86	98.44	12.00	
7575.00	40.46	177.17	7547.68	-114.02	5.64	114.16	12.00	
7578.06	40.82	177.17	7550.00	-116.00	5.74	116.14	12.00	BONE SPRING 2/SD/
7600.00	43.46	177.17	7566.27	-130.71	6.46	130.87	12.00	
7625.00	46.46	177.17	7583.96	-148.35	7.33	148.53	12.00	
7650.00	49.46	177.17	7600.70	-166.89	8.25	167.09	12.00	
7675.00	52.46	177.17	7616.44	-186.28	9.21	186.51	12.00	
7700.00	55.46	177.17	7631.15	-206.47	10.21	206.72	12.00	
7725.00	58.46	177.17	7644.78	-227.40	11.24	227.67	12.00	
7750.00	61.46	177.17	7657.30	-249.01	12.31	249.31	12.00	
7775.00	64.46	177.17	7668.66	-271.25	13.41	271.58	12.00	
7800.00	67.46	177.17	7678.85	-294.05	14.54	294.40	12.00	
7825.00	70.46	177.17	7687.82	-317.35	15.69	317.73	12.00	
7850.00	73.46	177.17	7695.57	-341.09	16.86	341.50	12.00	
7875.00	76.46	177.17	7702.06	-365.20	18.06	365.64	12.00	
7900.00	79.46	177.17	7707.27	-389.61	19.26	390.09	12.00	
7925.00	82.46	177.17	7711.20	-414.27	20.48	414.78	12.00	
7950.00	85.46	177.17	7713.83	-439.10	21.71	439.63	12.00	
7975.00	88.46	177.17	7715.16	-464.03	22.94	464.60	12.00	
7987.54	89.96	177.17	7715.34	-476.55	23.56	477.13	12.00	TARGET 2ND BONE SPRING
14627.50	89.96	177.17	7720.00	-7108.41	351.46	7117.09	0.00	EOL

Chamaeleon BIN State Com #2H

