

UNORTHODOX
LOCATION

RECEIVED

FEB 28 2014

OCD Artesia
NMOCD ARTESIA

FORM APPROVED

OMB No. 1004-0137

Expires October 31, 2014

Form 3160-3
(March 2012)UNITED STATES
DEPARTMENT OF THE INTERIOR
BUREAU OF LAND MANAGEMENT

APPLICATION FOR PERMIT TO DRILL OR REENTER

1a. Type of Work: <input checked="" type="checkbox"/> DRILL <input type="checkbox"/> REENTER		5. Lease Serial No. NMNM120895	
1b. Type of Well: <input checked="" type="checkbox"/> Oil Well <input type="checkbox"/> Gas Well <input type="checkbox"/> Other <input checked="" type="checkbox"/> Single Zone <input type="checkbox"/> Multiple Zone		6. If Indian, Allottee or Tribe Name	
2. Name of Operator COG Production LLC.		7. If Unit or CA Agreement, Name and No.	
3a. Address 2208 West Main Street Artesia, NM 88210		8. Lease Name and Well No. El Jimador Federal #3H	
3b. Phone No. (include area code) 575-748-6940		9. API Well No. 30-015-42125	
4. Location of Well (Report location clearly and in accordance with any State requirements. *) At surface 190' FSL & 1650' FWL Unit Letter N (SESW) Sec 23-T25S-R29E At proposed prod. Zone 330' FNL & 1750' FWL Unit Letter C (NENW) Sec 23-T25S-R29E		10. Field and Pool, or Exploratory Curral Canyon; Del., West	
14. Distance in miles and direction from nearest town or post office* Approximately 7 miles from Malaga		11. Sec., T.R.M. or Blk and Survey or Area Sec. 23 - T25S - R29E	
15. Distance from proposed* location to nearest property or lease line, ft. (Also to nearest drig. Unit line, if any) 330'		12. County or Parish Eddy	
16. No. of acres in lease 1280		13. State NM	
17. Spacing Unit dedicated to this well 160		18. Distance from location* to nearest well, drilling, completed, applied for, on this lease, ft. SHL: 2377' BHL: 866'	
19. Proposed Depth TVD: 11,566' MD: 6,980'		20. BLM/BIA Bond No. on file NMB000860 & NMB000845	
21. Elevations (Show whether DF, KDB, RT, GL, etc.) 3073.7' GL		22. Approximate date work will start* 4/1/2014	
		23. Estimated duration 30 days	

24. Attachments

The following, completed in accordance with the requirements of Onshore Oil and Gas Order No. 1, shall be attached to this form:

- | | |
|-------------------------------------------------------------------------------------------------------------------------------------------------|----------------------------------------------------------------------------------------------------|
| 1. Well plat certified by a registered surveyor. | 4. Bond to cover the operations unless covered by an existing bond on file (see Item 20 above). |
| 2. A Drilling Plan | 5. Operator certification |
| 3. A Surface Use Plan (if the location is on National Forest System Lands, the SUPO shall be filed with the appropriate Forest Service Office). | 6. Such other site specific information and/or plans as may be required by the authorized officer. |

25. Signature <i>Mayte Reyes</i>	Name (Printed/Typed) Mayte Reyes	Date 1/13/2014
Title Regulatory Analyst		
Approved by (Signature)	Name (Printed/Typed)	Date
Title FIELD MANAGER	Office CARLSBAD FIELD OFFICE	

Application approval does not warrant or certify that the applicant holds legan or equitable title to those rights in the subject lease which would entitle the applicant to conduct operations thereon.

APPROVAL FOR TWO YEARS

Conditions of approval, if any, are attached.

Title 18 U.S.C. Section 1001 and Title 43 U.S.C. Section 1212, make it a crime for any person knowingly and willfully to make to any department or agency of the United States any false, fictitious or fraudulent statements or representations as to any matter within its jurisdiction.

(Continued on page 2)

SEE ATTACHED FOR
CONDITIONS OF APPROVALApproval Subject to General Requirements
& Special Stipulations Attached

Carlsbad Controlled Water Basin

Surface Use Plan
COG Production LLC
El Jimador Federal #3H
SHL: 190' FSL & 1650' FWL UL N
Section 23, T25S, R29E
BHL: 330' FNL & 1750' FWL UL C
Section 23, T25S, R29E
Eddy County, New Mexico

OPERATOR CERTIFICATION

I hereby certify that I, or persons under my direct supervision, have inspected the drill site and access road proposed herein; that I am familiar with the conditions that presently exist; that I have full knowledge of State and Federal laws applicable to this operation; that the statements made in this APD package are, to the best of my knowledge, true and correct; and that the work associated with the operations proposed herein will be performed in conformity with this APD package and the terms and conditions under which it is approved. I also certify that I, or COG Production, LLC, am responsible for the operations conducted under this application. These statements are subject to the provisions of 18 U.S.C. 1001 for the filing of false statements. Executed this 13th day of January, 2014.

Signed: 

Printed Name: Melanie J. Parker

Position: Regulatory Coordinator

Address: 2208 W. Main Street, Artesia, NM 88210

Telephone: (575) 748-6940

Field Representative (if not above signatory): Rand French

E-mail: mparker@concho.com

DISTRICT I
1625 N. FRENCH DR., HOBBS, NM 88240
Phone: (575) 393-6161 Fax: (575) 393-0720

DISTRICT II
1301 W. GRAND AVENUE, ARTESIA, NM 88210
Phone: (575) 748-1283 Fax: (575) 748-9720

DISTRICT III
1000 RIO BRAZOS RD., AZTEC, NM 87410
Phone: (505) 334-6176 Fax: (505) 334-6170

DISTRICT IV
11885 S. ST. FRANCIS DR., SANTA FE, NM 87505
Phone: (505) 476-3460 Fax: (505) 476-3462

State of New Mexico
Energy, Minerals & Natural Resources Department
OIL CONSERVATION DIVISION
11885 SOUTH ST. FRANCIS DR.
Santa Fe, New Mexico 87505

Form C-102
Revised August 1, 2011
Submit one copy to appropriate

☐ AMENDED REPORT

WELL LOCATION AND ACREAGE DEDICATION PLAT

API Number 30-015- 42125	Pool Code 13365	Pool Name Corral Canyon Wildcat; Delaware; West
Property Code 40435	Property Name EL JIMADOR FEDERAL	Well Number 3H
OGRID No. 217955	Operator Name COG PRODUCTION, LLC	Elevation 3073.7'

Surface Location

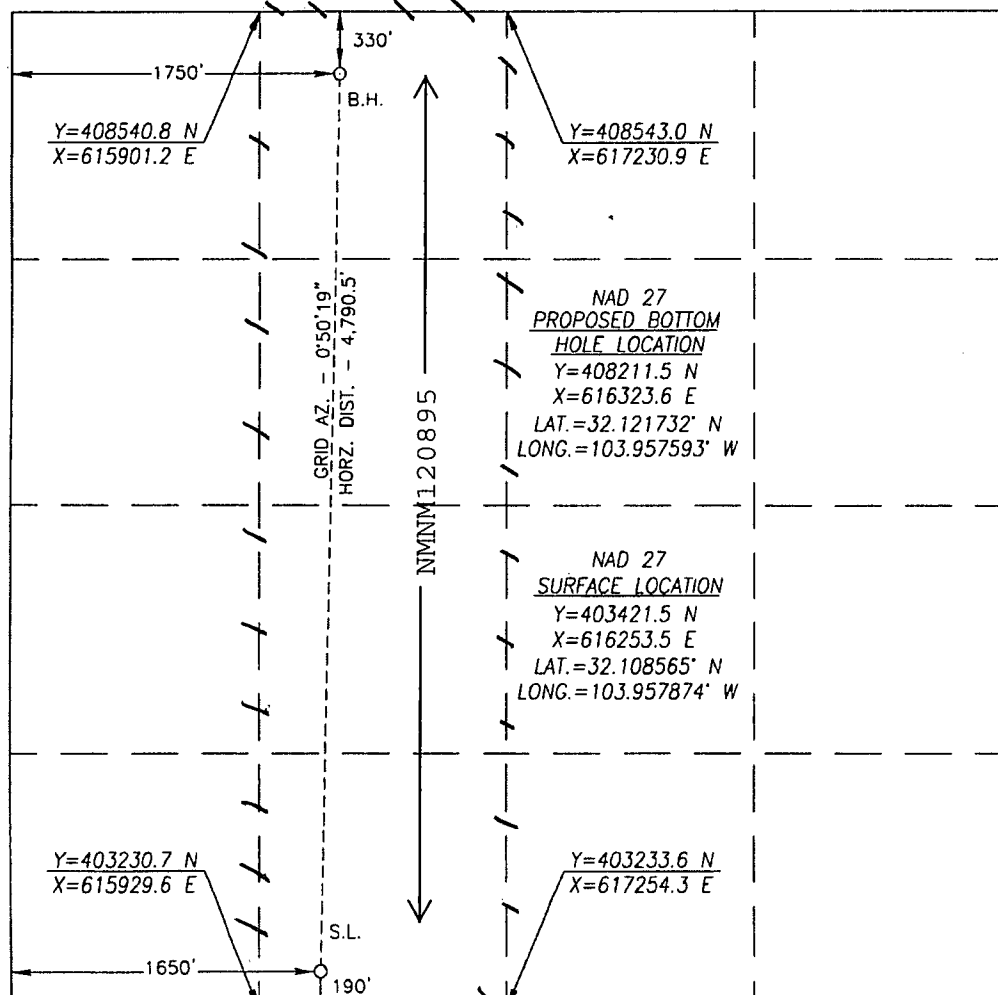
UL or lot No.	Section	Township	Range	Lot Idn	Feet from the	North/South line	Feet from the	East/West line	County
N	23	25-S	29-E		190	SOUTH	1650	WEST	EDDY

Bottom Hole Location If Different From Surface

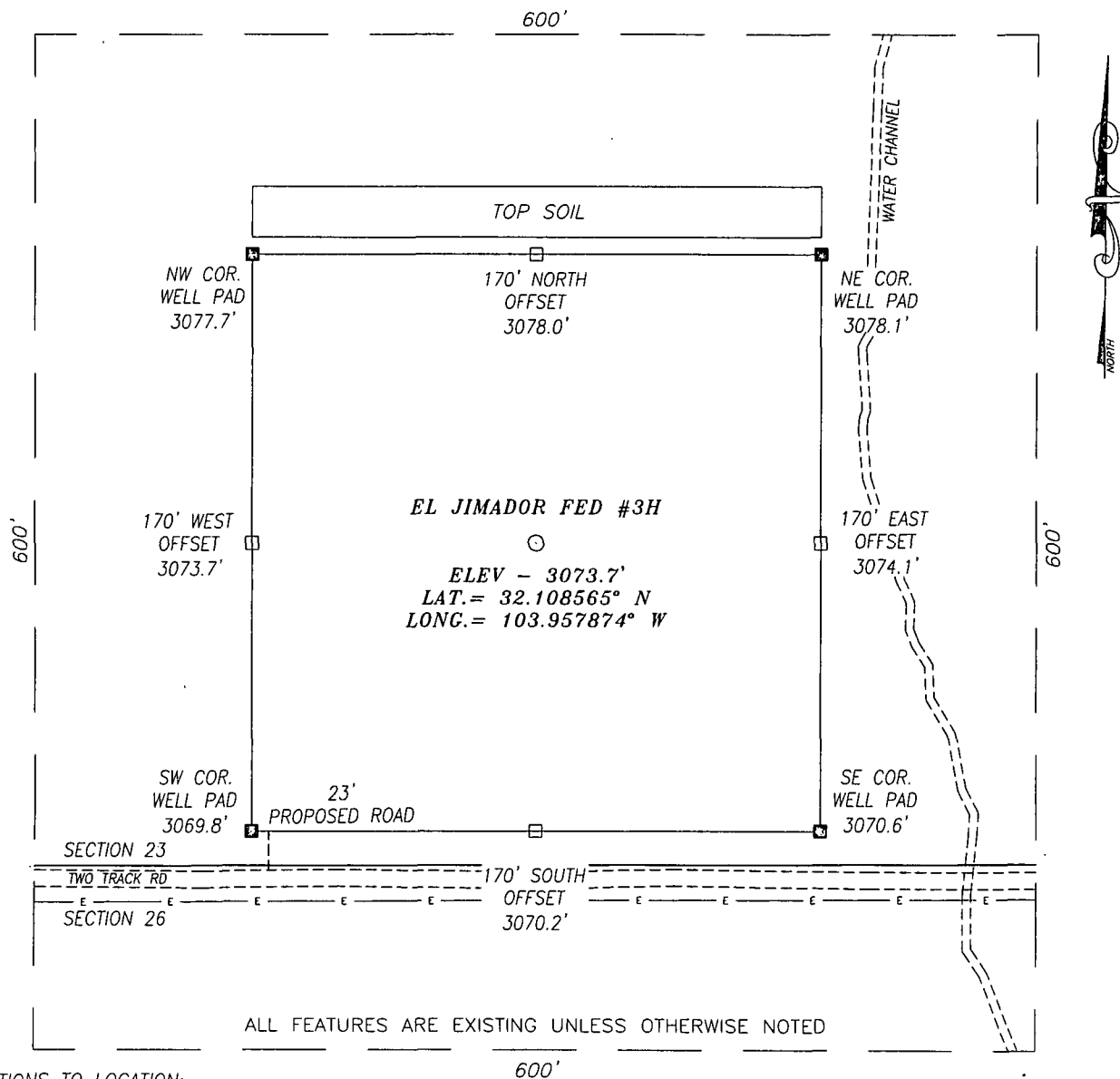
UL or lot No.	Section	Township	Range	Lot Idn	Feet from the	North/South line	Feet from the	East/West line	County
C	23	25-S	29-E		330	NORTH	1750	WEST	EDDY

Dedicated Acres 160	Joint or Infill	Consolidation Code	Order No. 2-28 11566
------------------------	-----------------	--------------------	------------------------------------------

NO ALLOWABLE WILL BE ASSIGNED TO THIS COMPLETION UNTIL ALL INTERESTS HAVE BEEN CONSOLIDATED
OR A NON-STANDARD UNIT HAS BEEN APPROVED BY THE DIVISION

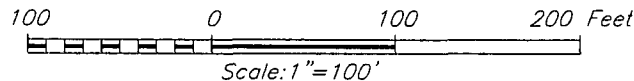
	<p>OPERATOR CERTIFICATION</p> <p>I hereby certify that the information herein is true and complete to the best of my knowledge and belief, and that this organization either owns a working interest or unleased mineral interest in the land including the proposed bottom hole location or has a right to drill this well at this location pursuant to a contract with an owner of such mineral or working interest, or to a voluntary pooling agreement or a compulsory pooling order heretofore entered by the division.</p> <p>Signature: <i>Melanie J. Parker</i> Date: <i>11/23/11</i> Printed Name: <i>Melanie J. Parker</i> E-mail Address: <i>mparker@concho.co</i></p> <p>SURVEYOR CERTIFICATION</p> <p>I hereby certify that the well location shown on this plat was plotted from field notes of actual surveys made by me or under my supervision, and that the same is true and correct to the best of my belief.</p> <p>AUGUST 9, 2013 Date of Survey</p> <p>Signature & Seal of Professional Surveyor</p> <p><i>Chad L. Harcrow</i> 8/29/13 Certificate No. CHAD HARCROW 17777 W.O. # 13-219 DRAWN BY: TL</p>
-------------------------------------------------------------------------------------	----------------------------------------------------------------------------------------------------------------------------------------------------------------------------------------------------------------------------------------------------------------------------------------------------------------------------------------------------------------------------------------------------------------------------------------------------------------------------------------------------------------------------------------------------------------------------------------------------------------------------------------------------------------------------------------------------------------------------------------------------------------------------------------------------------------------------------------------------------------------------------------------------------------------------------------------------------------------------------------------------------------------------------------------------------------------------------------------------------------------------------------------------------------------

SECTION 23, TOWNSHIP 25 SOUTH, RANGE 29 EAST, N.M.P.M.,
EDDY COUNTY NEW MEXICO



DIRECTIONS TO LOCATION:

TRAVELING SOUTH ON HWY 285 TURN LEFT (NORTHEAST) ONTO CR #725 (LONGHORN RD) AND GO APPROX. 3.8 MILES; THEN TURN RIGHT (SOUTHEAST) AND GO APPROX. 0.3 MILES; THEN TURN LEFT (NORTHEAST) ONTO PIPELINE RD #1 AND GO APPROX. 1.8 MILES; THEN TURN LEFT (NORTH) AND GO APPROX. 2.2 MILES; THEN TURN RIGHT (EAST) AND STAY ON ROAD FOR APPROX. 0.7 MILES; THEN TURN RIGHT (NORTHEAST) AND GO APPROX. 0.3 MILES; THEN TURN RIGHT (SOUTH) AND GO APPROX. 0.6 MILES; THEN TURN LEFT (EAST) AND FOLLOW TWO TRACK ROAD FOR APPROX. 0.6 MILES; THEN PROPOSED WELL IS APPROX. 200 FEET NORTH.



HARCROW SURVEYING, LLC
1107 WATSON, ARTESIA, N.M. 88210
PH: (575) 513-2570 FAX: (575) 746-2158
chad_harcrow77@yahoo.com



COG PRODUCTION, LLC

EL JIMADOR FEDERAL #3H WELL
LOCATED 190 FEET FROM THE SOUTH LINE
AND 1650 FEET FROM THE WEST LINE OF SECTION 23,
TOWNSHIP 25 SOUTH, RANGE 29 EAST, N.M.P.M.,
EDDY COUNTY, NEW MEXICO

SURVEY DATE: 08/09/2013

PAGE: 1 OF 1

DRAFTING DATE: 08/13/2013

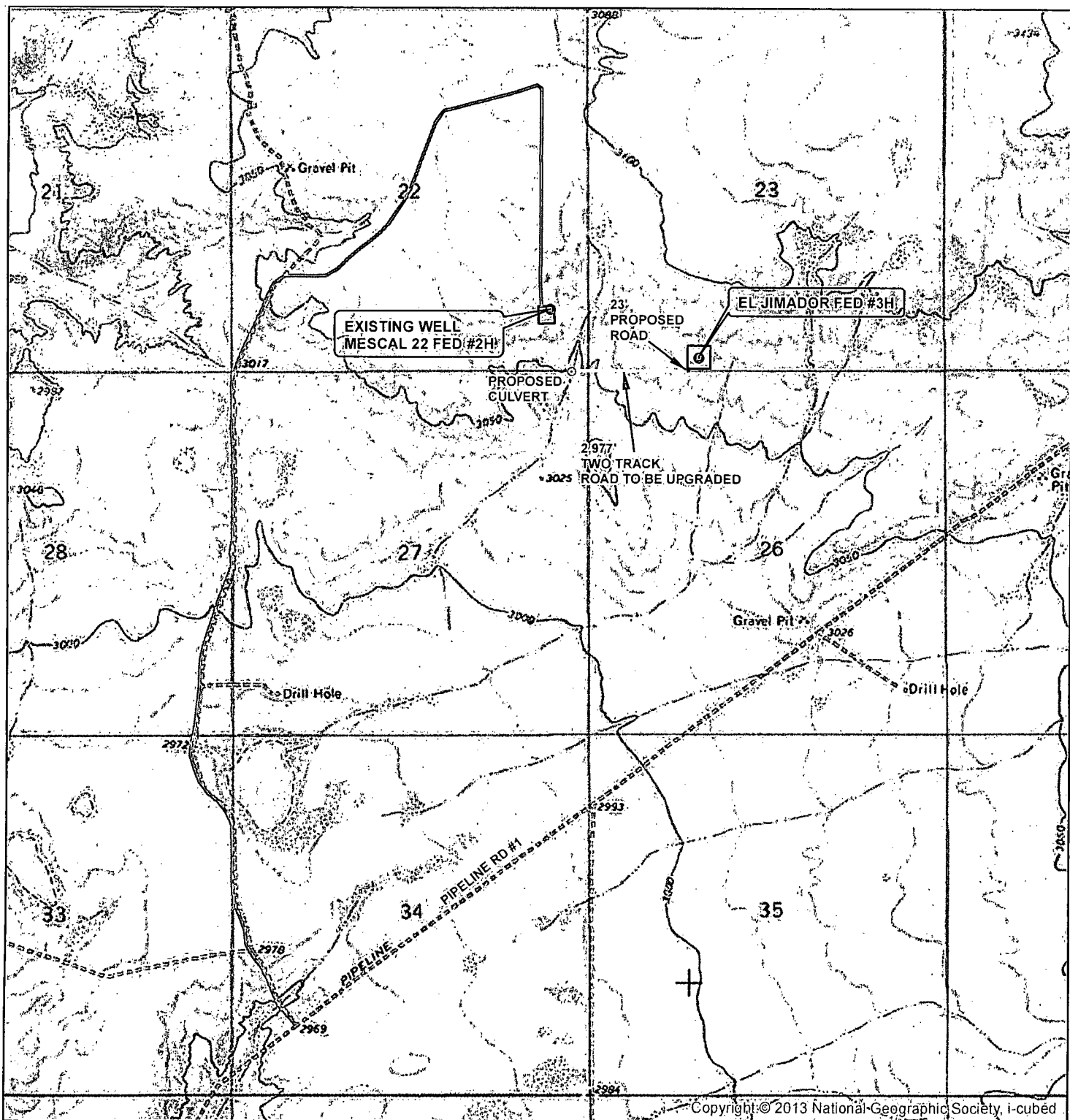
APPROVED BY: CH

DRAWN BY: TL

FILE: 13-219

EXHIBIT 2

LOCATION VERIFICATION MAP



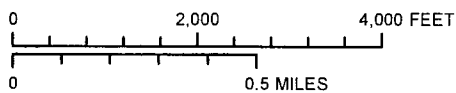
SEC. 23, TWP. 25S, RGE. 29E
 SURVEY: N.M.P.M
 COUNTY: EDDY STATE: NEW MEXICO
 DESCRIPTION: EL JIMADOR FED #1H
 190' FSL & 1650' FWL

ELEVATION: 3073.7
 LEASE: EL JIMADOR FED
 OPERATOR: COG PRODUCTION LLC

W.O. # 13-219

- ⊙ WELL
- WELL PAD
- MAIN ROAD
- PROPOSED ROAD
- TWO TRACK ROAD

1 IN = 2,000 FT

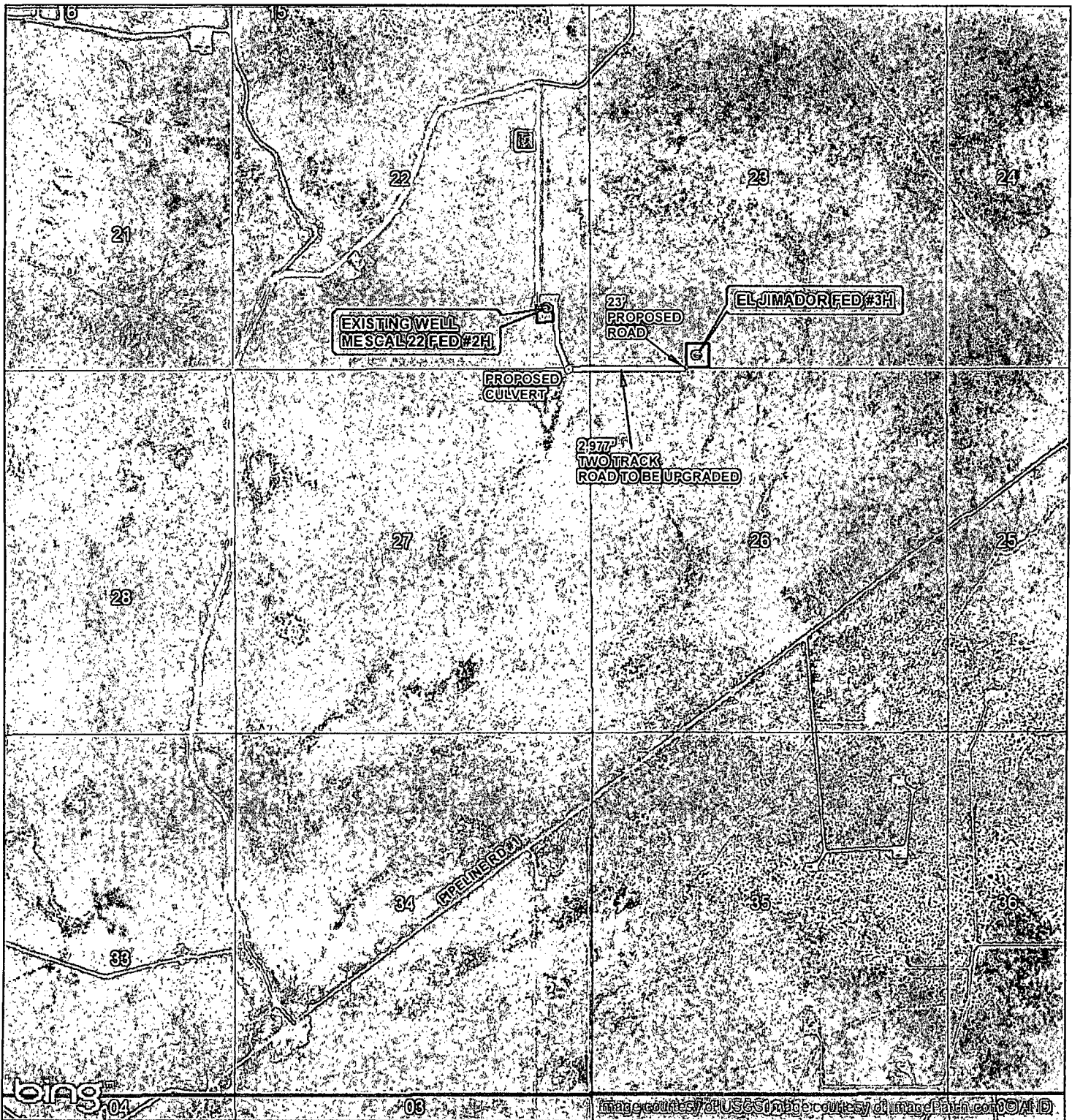


HARCROW SURVEYING, LLC
 1107 WATSON, ARTESIA N.M. 88210
 PH: (575) 513-2570 FAX: (575) 746-2158
 chad_harcrow77@yahoo.com



MAP DATE: 8/16/2013

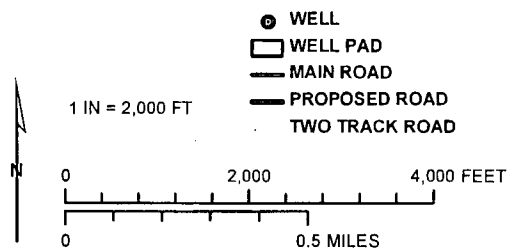
LOCATION VERIFICATION MAP



SEC. 23, TWP. 25S, RGE. 29E
 SURVEY: N.M.P.M.
 COUNTY: EDDY STATE: NEW MEXICO
 DESCRIPTION: EL JIMADOR FED #1H
 190' FSL & 1650' FWL

ELEVATION: 3073.7
 LEASE: EL JIMADOR FED
 OPERATOR: COG PRODUCTION LLC

W.O. # 13-219

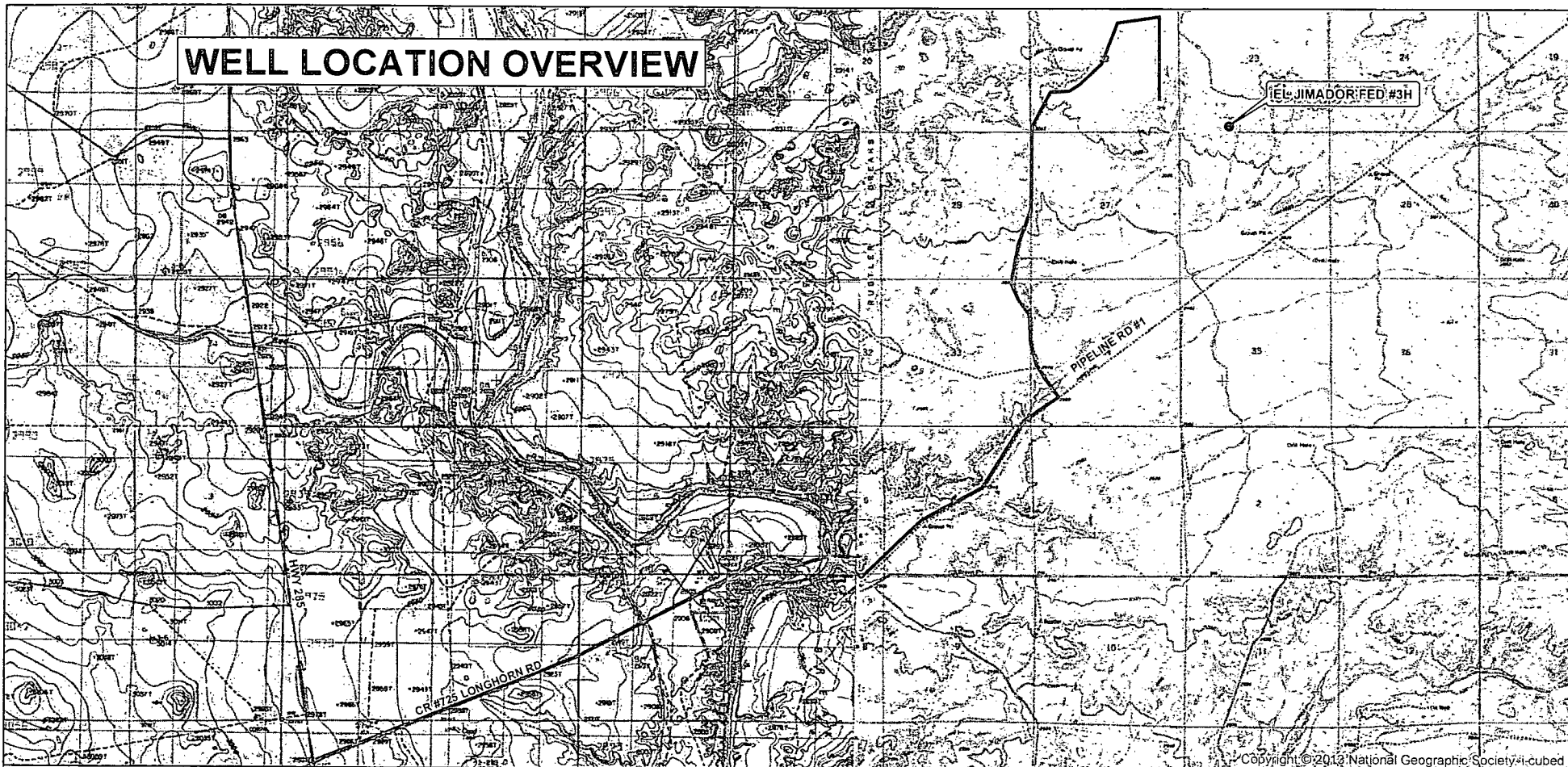


HARCROW SURVEYING, L.L.C.
 1107 WATSON, ARTESIA N.M. 88210
 PH: (575) 513-2570 FAX: (575) 746-2158
 chad_harcrow77@yahoo.com



MAP DATE: 8/16/2013

WELL LOCATION OVERVIEW

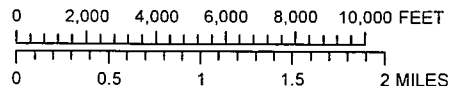


SEC. 23, TWP. 25S, RGE. 29E
SURVEY: N.M.P.M
COUNTY: EDDY STATE: NEW MEXICO
DESCRIPTION: EL JIMADOR FED #3H
OPERATOR: COG PRODUCTION LLC
LEASE: EL JIMADOR FED

W.O. # 13-219



1 IN = 4,250 FT



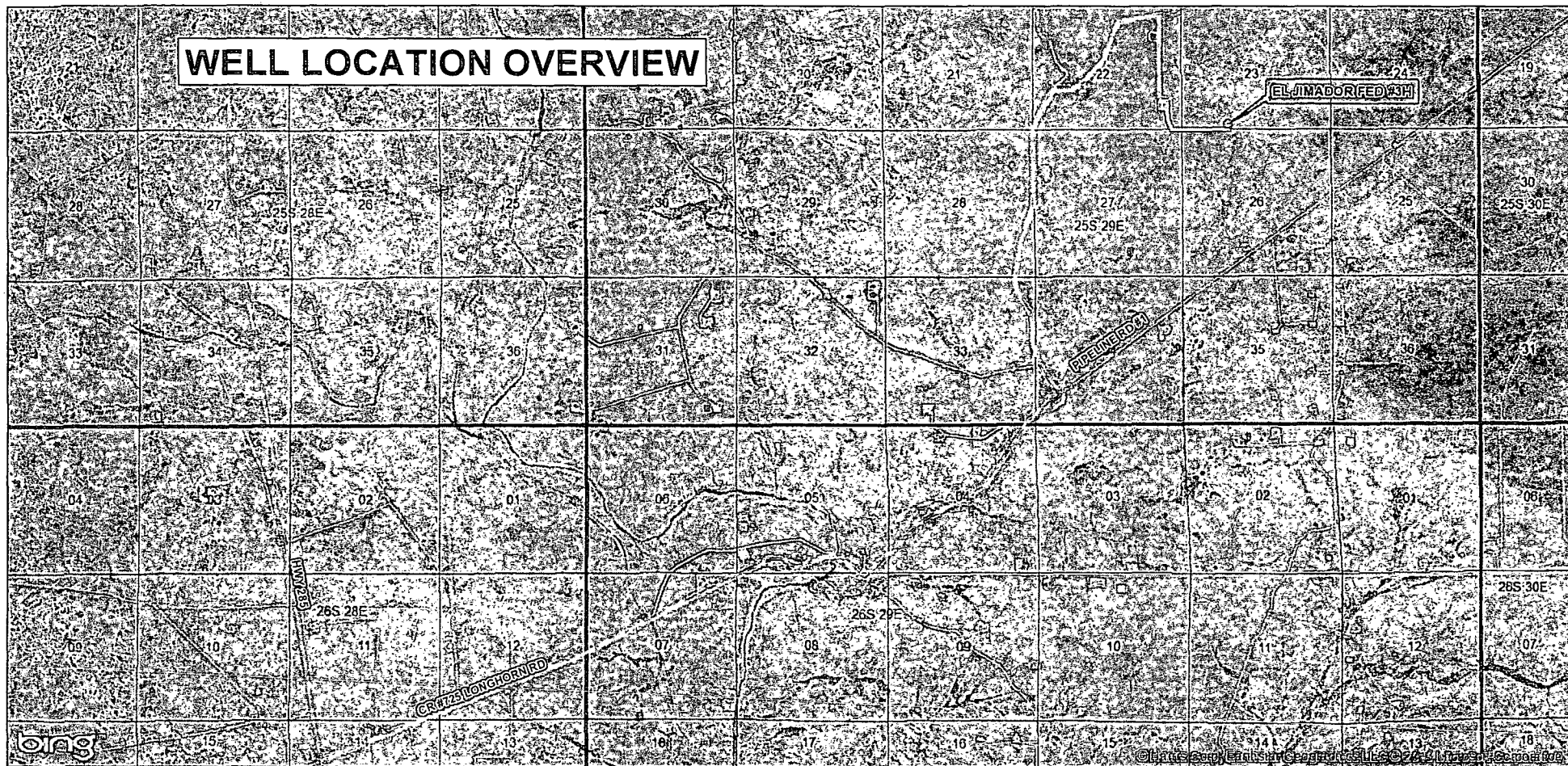
- WELL
- MAIN ROAD
- TWO TRACK ROAD

HARCROW SURVEYING, LLC
1107 WATSON, ARTESIA N.M. 88210
PH: (575) 513-2570 FAX: (575) 746-2158
chad_harcrow77@yahoo.com



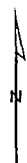
MAP DATE: 7/24/2013

WELL LOCATION OVERVIEW

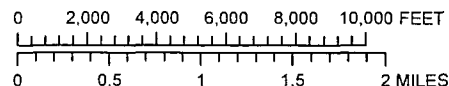


SEC. 23, TWP. 25S, RGE. 29E
 SURVEY: N.M.P.M
 COUNTY: EDDY STATE: NEW MEXICO
 DESCRIPTION: EL JIMADOR FED #3H
 OPERATOR: COG PRODUCTION LLC
 LEASE: EL JIMADOR FED

W.O. # 13-219



1 IN = 4,250 FT



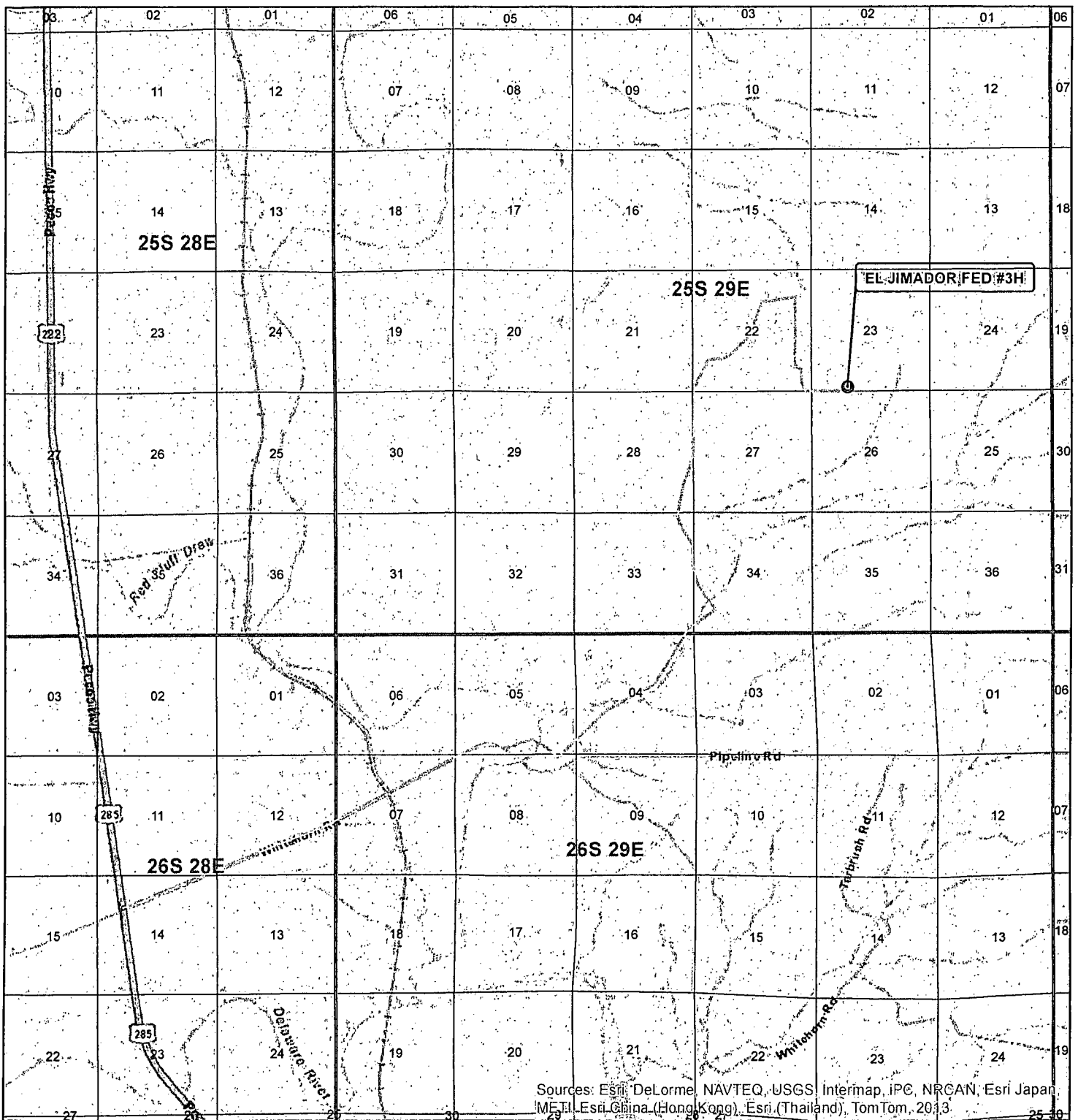
- WELL
- MAIN ROAD
- == TWO TRACK ROAD

HARCROW SURVEYING, LLC
 1107 WATSON, ARTESIA N.M. 88210
 PH: (575) 513-2570 FAX: (575) 746-2158
 chad_harcrow77@yahoo.com



MAP DATE: 7/24/2013

VICINITY MAP



Sources: Esri, DeLorme, NAVTEQ, USGS, Intermap, iPC, NRCAN, Esri Japan, METI, Esri China (Hong Kong), Esri (Thailand), TomTom, 2013

SEC. 23, TWP. 25S, RGE. 29E
 SURVEY: N.M.P.M
 COUNTY: EDDY STATE: NEW MEXICO
 DESCRIPTION: EL JIMADOR FED #3H
 190' FSL & 1650' FWL

ELEVATION: 3073.7
 LEASE: EL JIMADOR FED
 OPERATOR: COG PRODUCTION LLC

W.O. # 13-219



1 IN = 6,000 FT

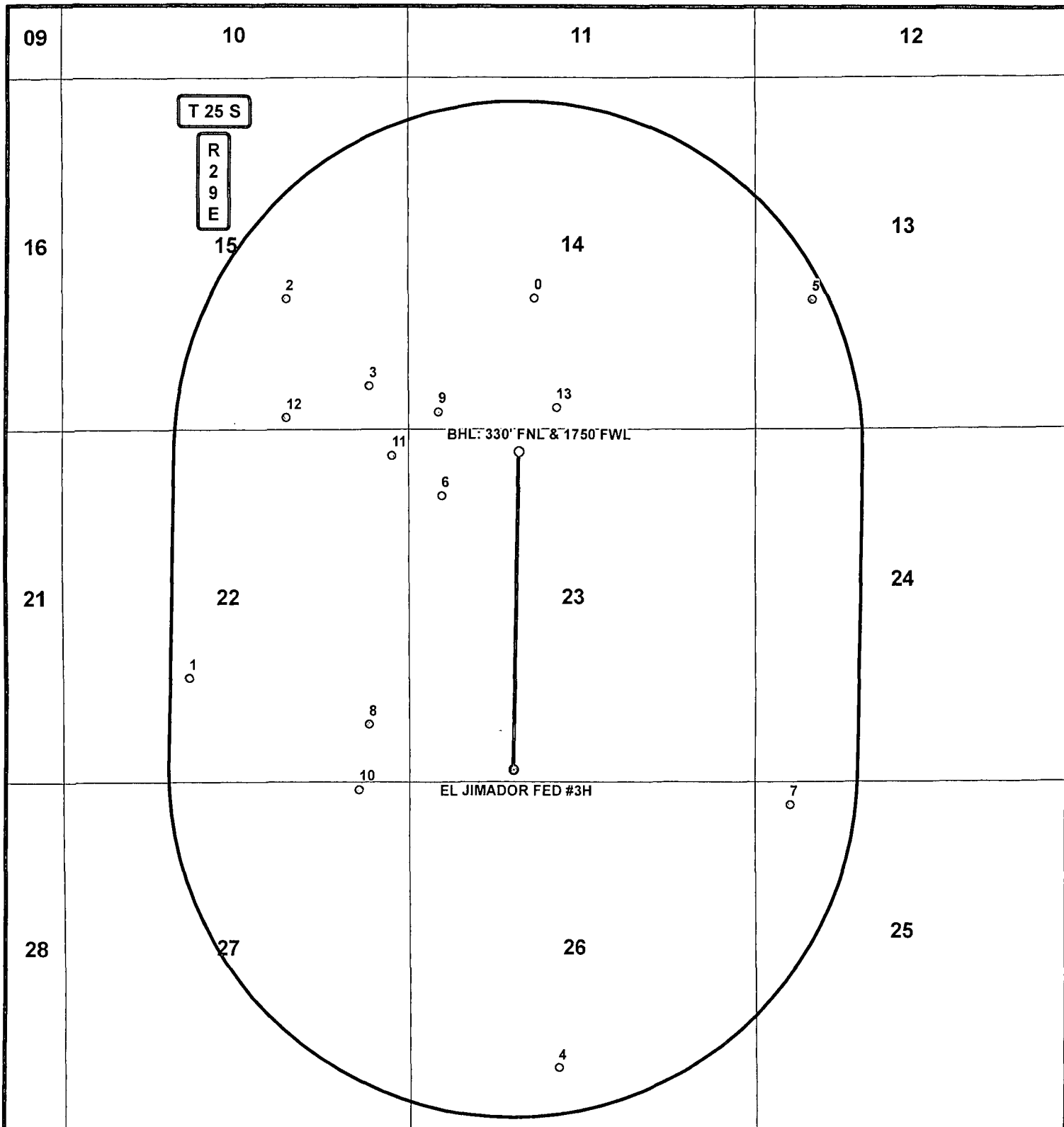
0 0.5 MILES

- WELL
- ▬ TOWNSHIP
- SECTION

HARCROW SURVEYING, LLC
 1107 WATSON, ARTESIA N.M. 88210
 PH: (575) 513-2570 FAX: (575) 746-2158
 chad_harcrow77@yahoo.com



MAP DATE: 8/16/2013



DATA FOR "WELLS WITHIN 1 MI." IS TAKEN FROM THE NEW MEXICO EMNRD WEBSITE. THE DATA HAS BEEN UPDATED THROUGH DECEMBER 2013.

LEGEND

- WELLS WITHIN 1 MI.
- BOTTOMHOLE
- WELL

1 MI. BUFFER

WELL NAME: EL JIMADOR FED #3H

SEC: 23 TWP: 25 S. RGE: 29 E. ELEVATION: 3073.7'

STATE: NEW MEXICO COUNTY: EDDY 190' FSL & 1650' FWL

W.O. # 14-19 LEASE: EL JIMADOR FED SURVEY: N.M.P.M

0 2,500 5,000 FEET

0 0.125 0.25 0.5 Miles

1 IN = 2,000 FT

1 MILE MAP

1/9/2014



CONCHO

COG PRODUCTION, LLC

HARCROW SURVEYING, LLC
1107 WATSON, ARTESIA N.M. 88210
PH: (575) 513-2570 FAX: (575) 746-2158
chat_harcrow77@yahoo.com



FID	OPERATOR	WELL_NAME	LATITUDE	LONGITUDE	API	TOWNSHIP	RANGE	SECTION	FTG_NS	NS_CD	FTG_EW	TVD_DEPT	COMPL_STAT
0	ENDEAVOR ENERGY RESOURCES, LP	CORRAL DRAW UNIT 001	32.128208	-103.957337	3001521054	25.0S	29E	14	1980 S		1980	0	Active
1	OXY USA INC	CORRAL DRAW 002	32.112486	-103.97442	3001521425	25.0S	29E	22	1580 S		1980	13840	Active
2	MOBIL OIL CORP	LATHAM FED 001	32.128203	-103.969607	3001522752	25.0S	29E	15	1980 S		1800	0	Plugged
3	BETTIS BOYLE & STOVALL, INC.	LATHAM FEDERAL 002	32.124583	-103.965478	3001524731	25.0S	29E	15	660 S		530	5500	Active
4	YATES PETROLEUM CORPORATION	CORRAL FED UT 002	32.096258	-103.956132	3001527554	25.0S	29E	26	990 S		2310	7040	Plugged
5	POGO PRODUCING CO	BRADLY 13 FEDERAL 002	32.128143	-103.943553	3001529257	25.0S	29E	13	1955 S		936	6000	Plugged
6	COG PRODUCTION, LLC	PATRON 23 FEDERAL 001H	32.120049	-103.961926	3001536776	25.0S	29E	23	990 N		560	7741	New (Not drilled or compl)
7	COG PRODUCTION, LLC	CABO WABO 25 FEDERAL 001H	32.10724	-103.94464	3001540440	25.0S	29E	25	330 N		600	7825	New (Not drilled or compl)
8	COG PRODUCTION, LLC	MESCAL 22 FEDERAL 002H	32.110574	-103.965525	3001537949	25.0S	29E	22	880 S		560	11193	New (Not drilled or compl)
9	EOG RESOURCES INC	HERD BULL 14 FEDERAL 004H	32.123512	-103.962083	3001538995	25.0S	29E	14	270 S		515	0	New (Not drilled or compl)
10	EOG RESOURCES INC	WBD 27 FEDERAL 001	32.107894	-103.966001	3001539170	25.0S	29E	27	95 N		710	0	New (Not drilled or compl)
11	COG PRODUCTION, LLC	MESCAL 22 FEDERAL 003H	32.121726	-103.964366	3001540929	25.0S	29E	22	380 N		190	0	New (Not drilled or compl)
12	COG PRODUCTION, LLC	BLACKBART 15 FEDERAL 002H	32.123282	-103.969598	3001540797	25.0S	29E	15	190 S		1800	7714	New (Not drilled or compl)
13	EOG RESOURCES INC	HERD BULL 14 FEDERAL 003H	32.123671	-103.956257	3001538994	25.0S	29E	14	330 S		2310	0	New (Not drilled or compl)

COG Operating LLC
DRILLING AND OPERATIONS PROGRAM
El Jimador Fed 3H
SHL: 190' FSL & 1650' FWL
BHL: 330' FNL & 1750' FWL
Section 23, T25S R29E
Eddy County, New Mexico

In conjunction with Form 3160-3, Application for Permit to Drill subject well, COG Operating LLC submits the following eleven items of pertinent information in accordance with BLM requirements.

1. Geological surface formation: Permian
2. The estimated tops of geologic markers & estimated depths at which anticipated water, oil or gas formations are expected to be encountered are as follows:

Fresh Water	60'	
Rustler	166'	
Top of Salt	1,537'	
BOS/Fletcher	3,024'	
Delaware/Lamar	3,223'	
Bell Canyon	3,251'	Oil
Cherry Canyon	4,097'	Oil
Brushy Canyon	5,380'	Oil
Brushy Canyon A	6,766'	Oil
Brushy Canyon 2	6,924'	Oil
Bone Spring	7,001'	Oil – Will not penetrate
TD MD	11,566'	
TD TVD	6,980'	

No other formations are expected to give up oil, gas or fresh water in measurable quantities.

The surface fresh water sands will be protected by setting 13-3/8" casing at 725' and circulating cement back to surface.

The salt sections will be isolated by setting 9-5/8" casing at 3,240' and circulating cement back to surface.

Other intervals will be isolated by setting 5 1/2" casing to total depth and circulating cement back to surface.

3. Proposed Casing Program: All casing is new and API approved

Hole Size	Depths	Section	OD Casing	New/Used	Wt	Collar	Grade	Collapse Design Factor	Burst Design Factor	Tension Design Factor
17 1/2"	0' – 725'	Surface	13 3/8"	New	54.5#	STC	J-55	1.125	1.125	1.6
12 1/4"	0' – 3,240'	Intrmd	9 5/8"	New	36#	LTC	J-55	1.125	1.125	1.6
7 7/8"	0' – 11,566'	Production Curve & Lateral	5 1/2"	New	17#	LTC	P-110	1.125	1.125	1.6

- While running all casing strings, the pipe will be kept a minimum of 1/3 full at all times to avoid approaching the collapse pressure of casing.
- Will run one centralizer per joint in lateral section of well.

4. Proposed Cement Program

- a. 13-3/8" Surface
- Lead: 330 sx Class C + 4% Gel + 2% CaCl₂
(13.5 ppg / 9.2 gal/sk / 1.75 cuft/sk)
- Tail: 250 sx Class C + 2% CaCl₂
(14.8 ppg / 6.35 gal/sk / 1.34 cuft/sk)
- **Calculated w/75% excess on OH volumes based on offset wells
- b. 9 5/8" Intermediate:
- Lead: 915 sx Class C + 4% Gel + 1% CaCl₂
(13.5 ppg / 9.2 gal/sk / 1.75 cuft/sk)
- Tail: 200 sx Class C + 2% CaCl₂
(14.8 ppg / 6.35 gal/sk / 1.34 cuft/sk)
- **Calculated w/100% excess on OH volumes
- c. 5 1/2" Production
- Lead: 800 sx 50:50:10 H w/ 8# salt, 5# kolseal, 0.5% Halad-322, 0.3% HR-601 & 1/4# D-Air 5000 (11.9 ppg / 14.07 gal/sk / 2.51 cuft/sk)
- Tail: 1125 sx 50:50:2 H w/ 1% salt, 0.4% GasStop, 0.3% CFR-3 & 0.1% HR601, & CFR-3 (14.4 ppg / 5.66 gal/sk 1.25 cuft/sk)
- **Calculated w/65% excess on OH volumes

- The above cement volumes could be revised pending caliper measurements.
- All casing strings are designed to circulate cement to surface.

5. Minimum Specifications for Pressure Control:

Nipple up on 13 3/8" with minimum 2M annular preventer. Annular will be tested to 50% of WP and remainder of system tested to 2000 psi by independent tester.

Nipple up on 9 5/8" with minimum 3M annular and double ram preventers. Annular will be tested to 50% of WP and remainder of system tested to 3000 psi by independent tester.

Pipe rams will be operationally checked each 24 hour period. Blind rams will be operationally checked on each trip out of the hole. These checks will be noted on the daily tour sheets.

A 2" kill line and a minimum 3" choke line will be included in the drilling spool located below the ram-type BOP. Other accessories to the BOP equipment will include a Kelly cock and floor safety valve (inside BOP) and choke lines and choke manifold with 3000 psi WP rating.

All casing strings below the conductor shall be pressure tested to 0.22 psi per foot of casing string depth or 1500 psig, whichever is greater, but not to exceed 70 percent of casing's minimum internal yield. If pressure declines more than 10 percent in 30 minutes, corrective action will be taken.

While drilling the intermediate section, if a reading of H₂S is greater than 100 ppm, well will be shut-in and a remote operated choke will be installed.

6. Estimated BHP & BHT:

Lateral TD = 3049 psi

Lateral TD = 126° F

7. Mud Program: The applicable depths and properties of this system are as follows:

Depth	Type System	Mud Weight	Viscosity (sec)	Waterloss (cc)
0' - 725'	Fresh Water	8.4	29	N.C.
725' - 3,240'	Brine	10.0	29	N.C.
3,240' - 11,566' (Lateral)	Cut Brine	8.5 – 8.7	29	N.C.

- The necessary mud products for weight addition and fluid loss control will be on location at all times.
- A visual and electronic mud monitoring system will be rigged up prior to spud to detect changes in the volume of mud system. The electronic system consists of a pit volume totalizer, stroke counter and flow sensor at flow line.
- If weight and/or viscosity are introduced to the mud system a daily mud check will be performed by mud contractor, along with tourly check by rig personnel.
- After setting intermediate casing, a third party gas unit detection system will be installed at the flow line.

8. Auxiliary Well Control and Monitoring Equipment:

- a. A Kelly cock will be in the drill string at all times.
- b. A full opening drill pipe stabbing valve having the appropriate connections will be on the rig floor at all times.
- c. Hydrogen Sulfide detection equipment will be in operation after drilling out the 13 3/8" casing shoe until the 5 1/2" casing is cemented. Breathing equipment will be on location upon drilling the 13 3/8" shoe until total depth is reached.

SEP
COA

9. Testing, Logging and Coring Program:

- a. Drill stem tests will be based on geological sample shows.
- b. If open hole electrical logging is performed, the program will be:
 - i. Total Depth to Intermediate Casing: Dual Laterolog-Micro Laterolog and Gamma Ray. Compensated Neutron – Z Density log with Gamma Ray and Caliper.
 - ii. Total Depth to Surface: Compensated Neutron with Gamma Ray
 - iii. No cores are planned.
 - iv. Additional testing will be initiated subsequent to setting the 5 1/2" production casing. Specific intervals will be targeted based on log evaluation, geological sample shows and drill stem tests.

10. Potential Hazards:

- a. No abnormal pressures or temperatures are expected. There is no known presence of H₂S in this area. If H₂S is encountered the operator will comply with the provisions of Onshore Oil and Gas Order No. 6. All personnel will be familiar with all aspects of safe operation of equipment being used to drill this well. No H₂S is anticipated to be encountered.

11. Anticipated starting date and Duration of Operations:

- a. Road and location construction will begin after the BLM has approved the APD. Anticipated spud date will be as soon as possible after BLM approval and as soon as a rig will be available. Move in operations and drilling is expected to take 30 days.



COG Production LLC

Eddy County, NM (NAD 27)

Sec 23, T25S, R29E

EL Jimador FED #3H

Wellbore #1

Plan: Design #1

DDC Well Planning Report

04 November, 2013





DDC
Well Planning Report



Database:	EDM 5000.1 Single User Db	Local Co-ordinate Reference:	Well EL Jimador FED #3H
Company:	COG Production LLC	TVD Reference:	WELL @ 3091.7usft (Precision #79)
Project:	Eddy County, NM (NAD 27)	MD Reference:	WELL @ 3091.7usft (Precision #79)
Site:	Sec 23, T25S, R29E	North Reference:	Grid
Well:	EL Jimador FED #3H	Survey Calculation Method:	Minimum Curvature
Wellbore:	Wellbore #1		
Design:	Design #1		

Project	Eddy County, NM (NAD 27)		
Map System:	US State Plane 1927 (Exact solution)	System Datum:	Mean Sea Level
Geo Datum:	NAD 1927 (NADCON CONUS)		
Map Zone:	New Mexico East 3001		

Site	Sec 23, T25S, R29E		
Site Position:		Northing:	403,421.50 usft
From:	Map	Easting:	616,253.50 usft
Position Uncertainty:	0.0 usft	Slot Radius:	13-3/16 "
		Latitude:	32° 6' 30.835 N
		Longitude:	103° 57' 28.345 W
		Grid Convergence:	0.20 °

Well:	EL Jimador FED #3H		
Well Position	+N/-S	0.0 usft	Northing:
	+E/-W	0.0 usft	Easting:
Position Uncertainty	0.0 usft	Wellhead Elevation:	Ground Level:
			3,073.7 usft

Wellbore	Wellbore #1		
Magnetics	Model Name	Sample Date	Declination
			(°)
	IGRF2010	10/24/2013	7.47
			Dip Angle
			(°)
			59.96
			Field Strength
			(nT)
			48,271

Design	Design #1		
Audit Notes:			
Version:	Phase:	PLAN	Tie On Depth:
			0.0
Vertical Section:	Depth From (TVD)	+N/-S	+E/-W
	(usft)	(usft)	(usft)
	0.0	0.0	0.0
			Direction
			(°)
			0.84

Plan Sections:										
Measured	Inclination	Azimuth	Vertical	+N/-S	+E/-W	Dogleg	Build	Turn	TFO	Target
Depth	(°)	(°)	Depth	(usft)	(usft)	Rate	Rate	Rate	(°)	
(usft)			(usft)			(°/100usft)	(°/100usft)	(°/100usft)		
0.0	0.00	0.00	0.0	0.0	0.0	0.00	0.00	0.00	0.00	
6,502.5	0.00	0.00	6,502.5	0.0	0.0	0.00	0.00	0.00	0.00	
7,252.5	90.00	0.84	6,980.0	477.4	7.0	12.00	12.00	0.11	0.84	
11,565.5	90.00	0.84	6,980.0	4,790.0	70.1	0.00	0.00	0.00	0.00	PBHL EL Jimador FE



DDC
Well Planning Report



Database:	EDM 5000.1 Single User Db	Local Co-ordinate Reference:	Well EL Jimador FED #3H
Company:	COG Production LLC	TVD Reference:	WELL @ 3091.7usft (Precision #79)
Project:	Eddy County, NM (NAD 27)	MD Reference:	WELL @ 3091.7usft (Precision #79)
Site:	Sec 23, T25S, R29E	North Reference:	Grid
Well:	EL Jimador FED #3H	Survey Calculation Method:	Minimum Curvature
Wellbore:	Wellbore #1		
Design:	Design #1		

Planned Survey									
Measured Depth (usft)	Inclination (°)	Azimuth (°)	Vertical Depth (usft)	+N/-S (usft)	+E/-W (usft)	Vertical Section (usft)	Dogleg Rate (°/100usft)	Build Rate (°/100usft)	Turn Rate (°/100usft)
Build 12° / 100'									
6,502.5	0.00	0.00	6,502.5	0.0	0.0	0.0	0.00	0.00	0.00
6,600.0	11.70	0.84	6,599.3	9.9	0.1	9.9	12.00	12.00	0.00
6,700.0	23.70	0.84	6,694.4	40.3	0.6	40.3	12.00	12.00	0.00
BYCN-A									
6,781.6	33.50	0.84	6,766.0	79.3	1.2	79.3	12.00	12.00	0.00
6,800.0	35.70	0.84	6,781.1	89.7	1.3	89.7	12.00	12.00	0.00
6,900.0	47.70	0.84	6,855.6	156.1	2.3	156.1	12.00	12.00	0.00
7,000.0	59.70	0.84	6,914.7	236.5	3.5	236.6	12.00	12.00	0.00
BC-S									
7,019.0	61.98	0.84	6,924.0	253.1	3.7	253.2	12.00	12.00	0.00
7,100.0	71.70	0.84	6,955.8	327.5	4.8	327.5	12.00	12.00	0.00
7,200.0	83.70	0.84	6,977.1	425.0	6.2	425.1	12.00	12.00	0.00
End of Curve / 90° Inc / .84° Azm / 6980' TVD									
7,252.5	90.00	0.84	6,980.0	477.4	7.0	477.5	12.00	12.00	0.00
7,300.0	90.00	0.84	6,980.0	524.9	7.7	525.0	0.00	0.00	0.00
7,400.0	90.00	0.84	6,980.0	624.9	9.1	625.0	0.00	0.00	0.00
7,500.0	90.00	0.84	6,980.0	724.9	10.6	725.0	0.00	0.00	0.00
7,600.0	90.00	0.84	6,980.0	824.9	12.1	825.0	0.00	0.00	0.00
7,700.0	90.00	0.84	6,980.0	924.9	13.5	925.0	0.00	0.00	0.00
7,800.0	90.00	0.84	6,980.0	1,024.9	15.0	1,025.0	0.00	0.00	0.00
7,900.0	90.00	0.84	6,980.0	1,124.8	16.5	1,125.0	0.00	0.00	0.00
8,000.0	90.00	0.84	6,980.0	1,224.8	17.9	1,225.0	0.00	0.00	0.00
8,100.0	90.00	0.84	6,980.0	1,324.8	19.4	1,325.0	0.00	0.00	0.00
8,200.0	90.00	0.84	6,980.0	1,424.8	20.9	1,425.0	0.00	0.00	0.00
8,300.0	90.00	0.84	6,980.0	1,524.8	22.3	1,525.0	0.00	0.00	0.00
8,400.0	90.00	0.84	6,980.0	1,624.8	23.8	1,625.0	0.00	0.00	0.00
8,500.0	90.00	0.84	6,980.0	1,724.8	25.2	1,725.0	0.00	0.00	0.00
8,600.0	90.00	0.84	6,980.0	1,824.8	26.7	1,825.0	0.00	0.00	0.00
8,700.0	90.00	0.84	6,980.0	1,924.8	28.2	1,925.0	0.00	0.00	0.00
8,800.0	90.00	0.84	6,980.0	2,024.7	29.6	2,025.0	0.00	0.00	0.00
8,900.0	90.00	0.84	6,980.0	2,124.7	31.1	2,125.0	0.00	0.00	0.00
9,000.0	90.00	0.84	6,980.0	2,224.7	32.6	2,225.0	0.00	0.00	0.00
9,100.0	90.00	0.84	6,980.0	2,324.7	34.0	2,325.0	0.00	0.00	0.00
9,200.0	90.00	0.84	6,980.0	2,424.7	35.5	2,425.0	0.00	0.00	0.00
9,300.0	90.00	0.84	6,980.0	2,524.7	36.9	2,525.0	0.00	0.00	0.00
9,400.0	90.00	0.84	6,980.0	2,624.7	38.4	2,625.0	0.00	0.00	0.00
9,500.0	90.00	0.84	6,980.0	2,724.7	39.9	2,725.0	0.00	0.00	0.00
9,600.0	90.00	0.84	6,980.0	2,824.7	41.3	2,825.0	0.00	0.00	0.00
9,700.0	90.00	0.84	6,980.0	2,924.7	42.8	2,925.0	0.00	0.00	0.00
9,800.0	90.00	0.84	6,980.0	3,024.6	44.3	3,025.0	0.00	0.00	0.00
9,900.0	90.00	0.84	6,980.0	3,124.6	45.7	3,125.0	0.00	0.00	0.00
10,000.0	90.00	0.84	6,980.0	3,224.6	47.2	3,225.0	0.00	0.00	0.00
10,100.0	90.00	0.84	6,980.0	3,324.6	48.7	3,325.0	0.00	0.00	0.00
10,200.0	90.00	0.84	6,980.0	3,424.6	50.1	3,425.0	0.00	0.00	0.00
10,300.0	90.00	0.84	6,980.0	3,524.6	51.6	3,525.0	0.00	0.00	0.00
10,400.0	90.00	0.84	6,980.0	3,624.6	53.0	3,625.0	0.00	0.00	0.00
10,500.0	90.00	0.84	6,980.0	3,724.6	54.5	3,725.0	0.00	0.00	0.00
10,600.0	90.00	0.84	6,980.0	3,824.6	56.0	3,825.0	0.00	0.00	0.00
10,700.0	90.00	0.84	6,980.0	3,924.5	57.4	3,925.0	0.00	0.00	0.00
10,800.0	90.00	0.84	6,980.0	4,024.5	58.9	4,025.0	0.00	0.00	0.00
10,900.0	90.00	0.84	6,980.0	4,124.5	60.4	4,125.0	0.00	0.00	0.00
11,000.0	90.00	0.84	6,980.0	4,224.5	61.8	4,225.0	0.00	0.00	0.00



DDC
Well Planning Report



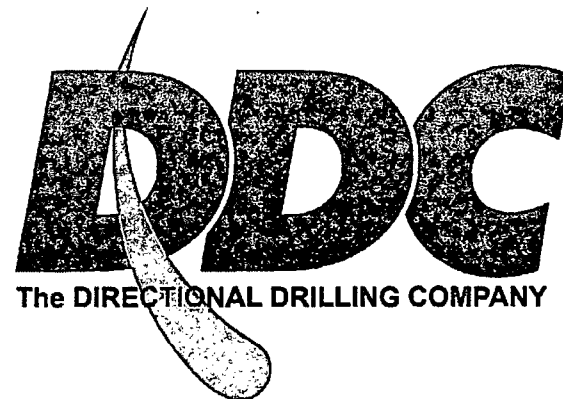
Database:	EDM 5000.1 Single User Db	Local Co-ordinate Reference:	Well EL Jimador FED #3H
Company:	COG Production LLC	TVD Reference:	WELL @ 3091.7usft (Precision #79)
Project:	Eddy County, NM (NAD 27)	MD Reference:	WELL @ 3091.7usft (Precision #79)
Site:	Sec 23, T25S, R29E	North Reference:	Grid
Well:	EL Jimador FED #3H	Survey Calculation Method:	Minimum Curvature
Wellbore:	Wellbore #1		
Design:	Design #1		

Planned Survey										
Measured Depth (usft)	Inclination (°)	Azimuth (°)	Vertical Depth (usft)	+N/-S (usft)	+E/-W (usft)	Vertical Section (usft)	Dogleg Rate (°/100usft)	Build Rate (°/100usft)	Turn Rate (°/100usft)	
11,100.0	90.00	0.84	6,980.0	4,324.5	63.3	4,325.0	0.00	0.00	0.00	
11,200.0	90.00	0.84	6,980.0	4,424.5	64.8	4,425.0	0.00	0.00	0.00	
11,300.0	90.00	0.84	6,980.0	4,524.5	66.2	4,525.0	0.00	0.00	0.00	
11,400.0	90.00	0.84	6,980.0	4,624.5	67.7	4,625.0	0.00	0.00	0.00	
11,500.0	90.00	0.84	6,980.0	4,724.5	69.1	4,725.0	0.00	0.00	0.00	
TD @ 11566' MD / 6980' TVD										
11,565.5	90.00	0.84	6,980.0	4,790.0	70.1	4,790.5	0.00	0.00	0.00	

Design Targets										
Target Name										
- hit/miss target	Dip Angle (°)	Dip Dir. (°)	TVD (usft)	+N/-S (usft)	+E/-W (usft)	Northing (usft)	Easting (usft)	Latitude	Longitude	
- Shape										
PBHL EL Jimador FED #	0.00	0.00	6,980.0	4,790.0	70.1	408,211.50	616,323.60	32° 7' 18.236 N	103° 57' 27.336 W	
- plan hits target center										
- Point										

Formations							
Measured Depth (usft)	Vertical Depth (usft)	Name	Lithology	Dip (°)	Dip Direction (°)		
166.0	166.0	Rustler		0.00	0.84		
1,537.0	1,537.0	TOS		0.00	0.84		
3,024.0	3,024.0	BOS		0.00	0.84		
3,223.0	3,223.0	Delaware		0.00	0.84		
3,251.0	3,251.0	BLNC		0.00	0.84		
4,097.0	4,097.0	CYCN		0.00	0.84		
5,380.0	5,380.0	BYCN		0.00	0.84		
6,781.6	6,766.0	BYCN-A		0.00	0.84		
7,019.0	6,924.0	BC-S		0.00	0.84		

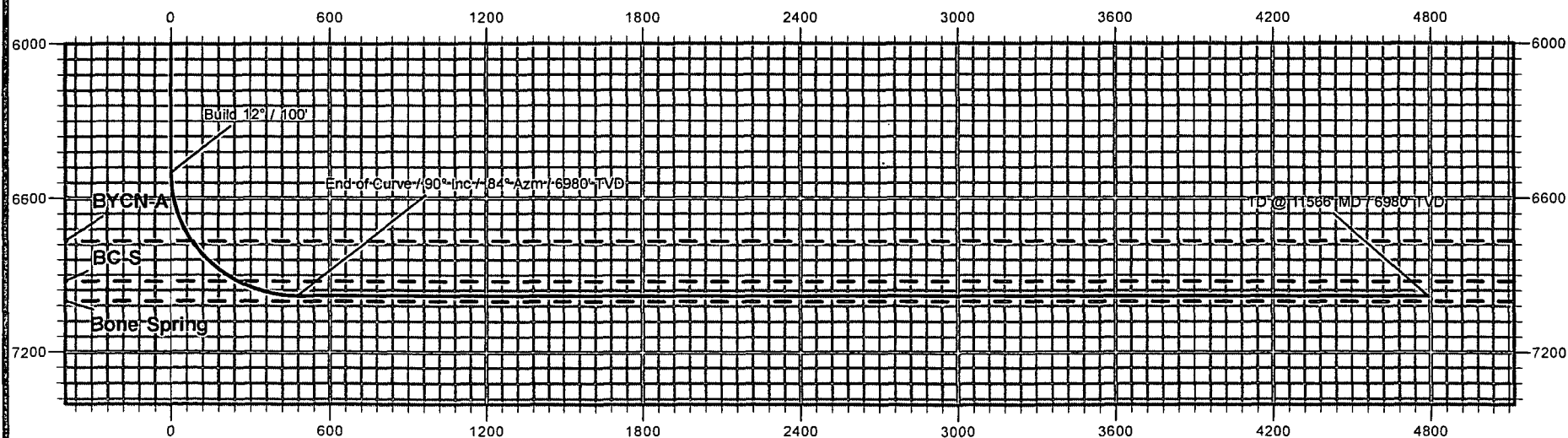
Plan Annotations					
Measured Depth (usft)	Vertical Depth (usft)	Local Coordinates		Comment	
		+N/-S (usft)	+E/-W (usft)		
6,502.5	6,502.5	0.0	0.0	Build 12° / 100'	
7,252.5	6,980.0	477.4	7.0	End of Curve / 90° Inc / .84° Azm / 6980' TVD	
11,565.5	6,980.0	4,790.0	70.1	TD @ 11566' MD / 6980' TVD	



Eddy County, NM (NAD 27)

EL Jimador FED #3H

Design #1



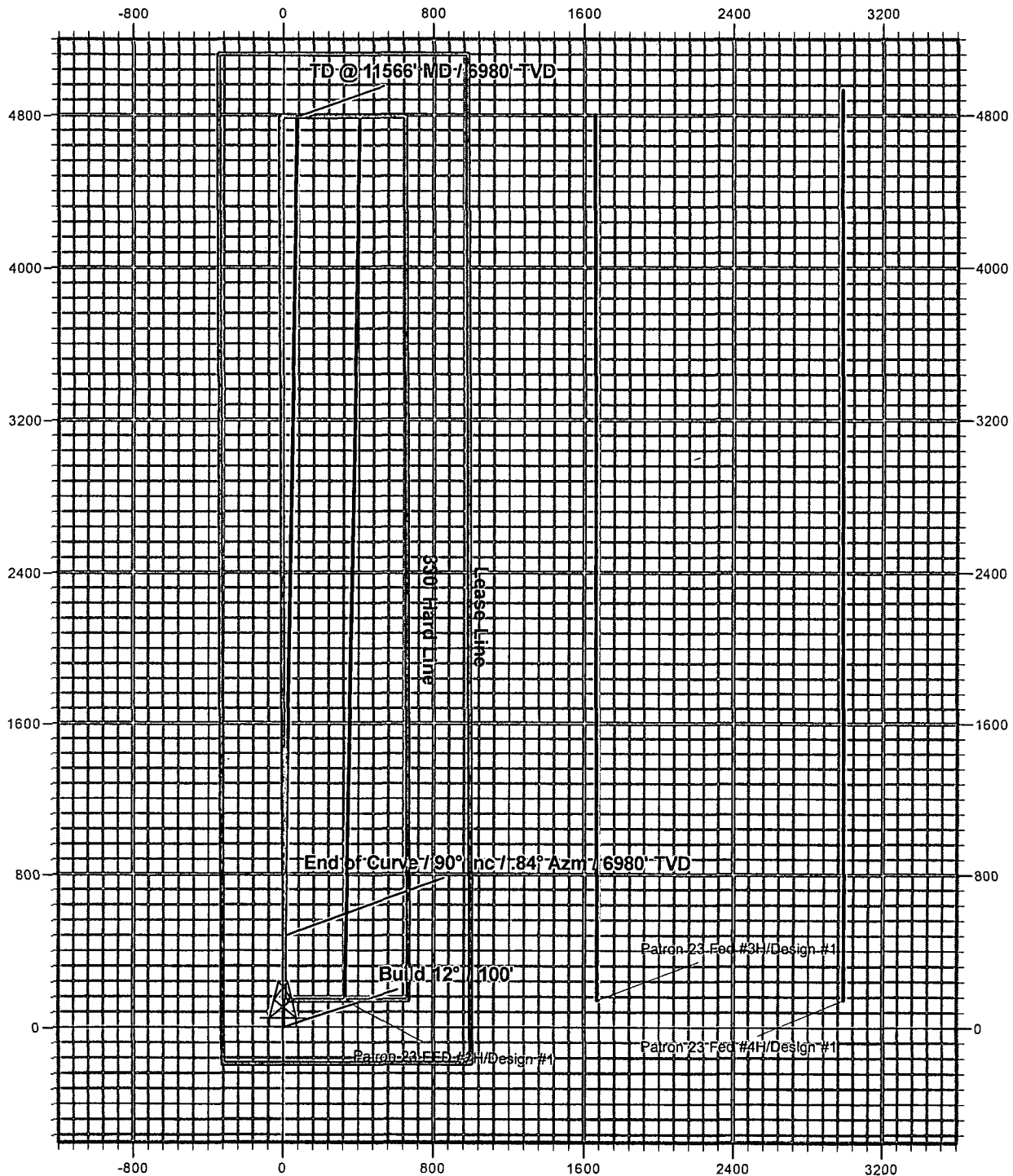
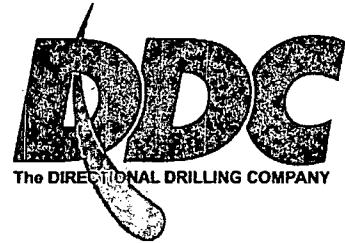
Vertical Section at 0.84° (600 usft/in)



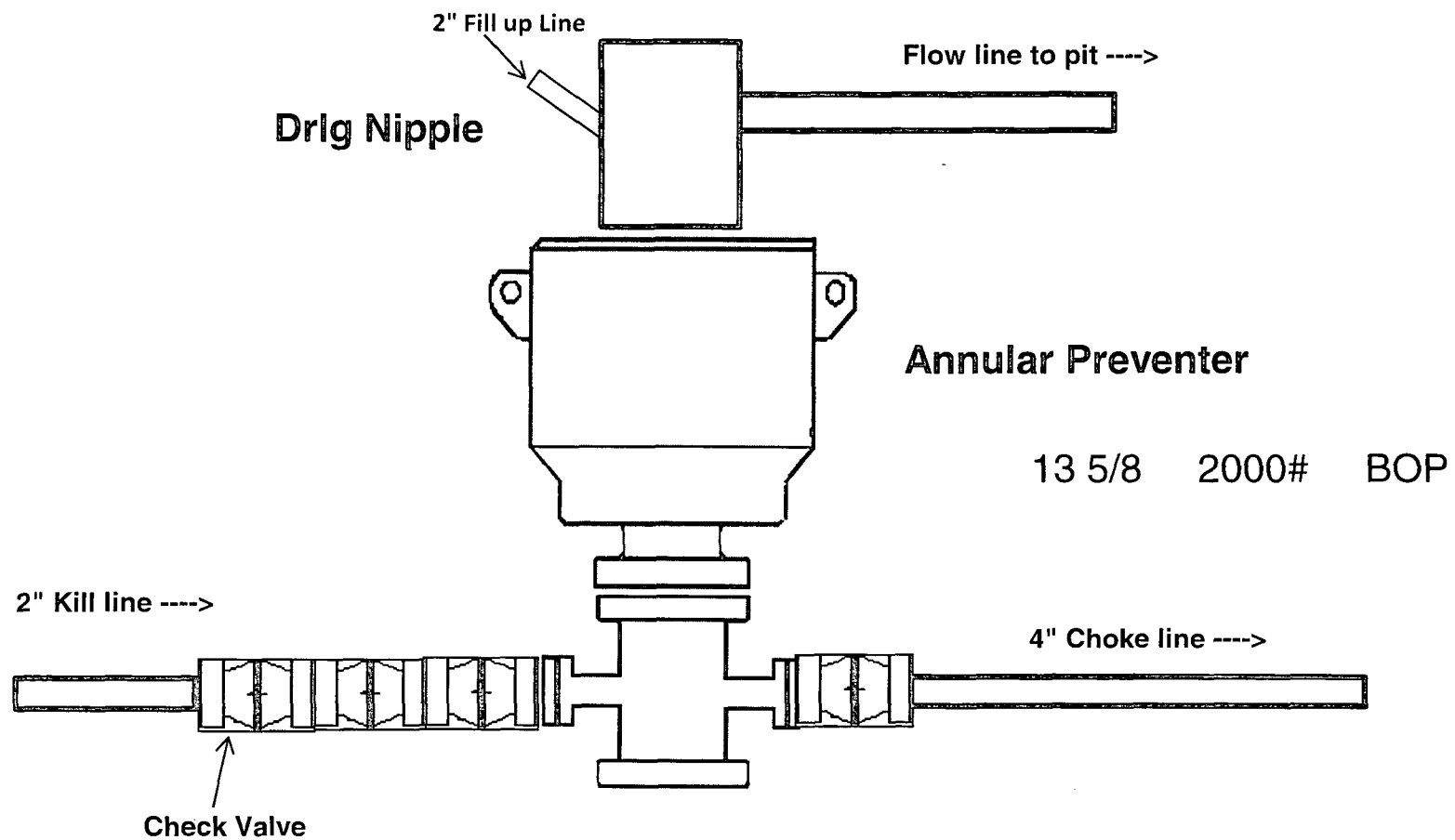
Eddy County, NM (NAD 27)

EL Jimador FED #3H

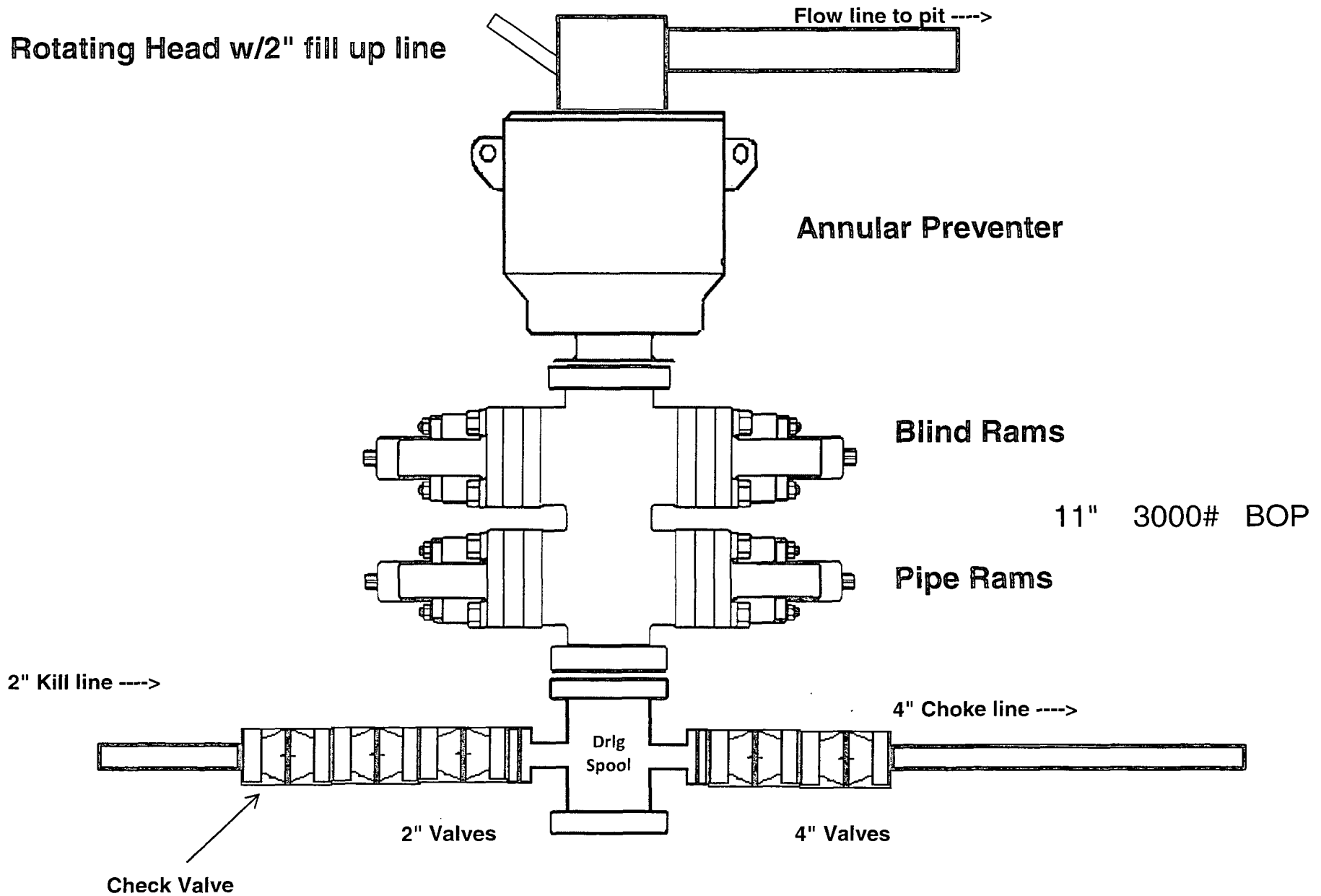
Design #1



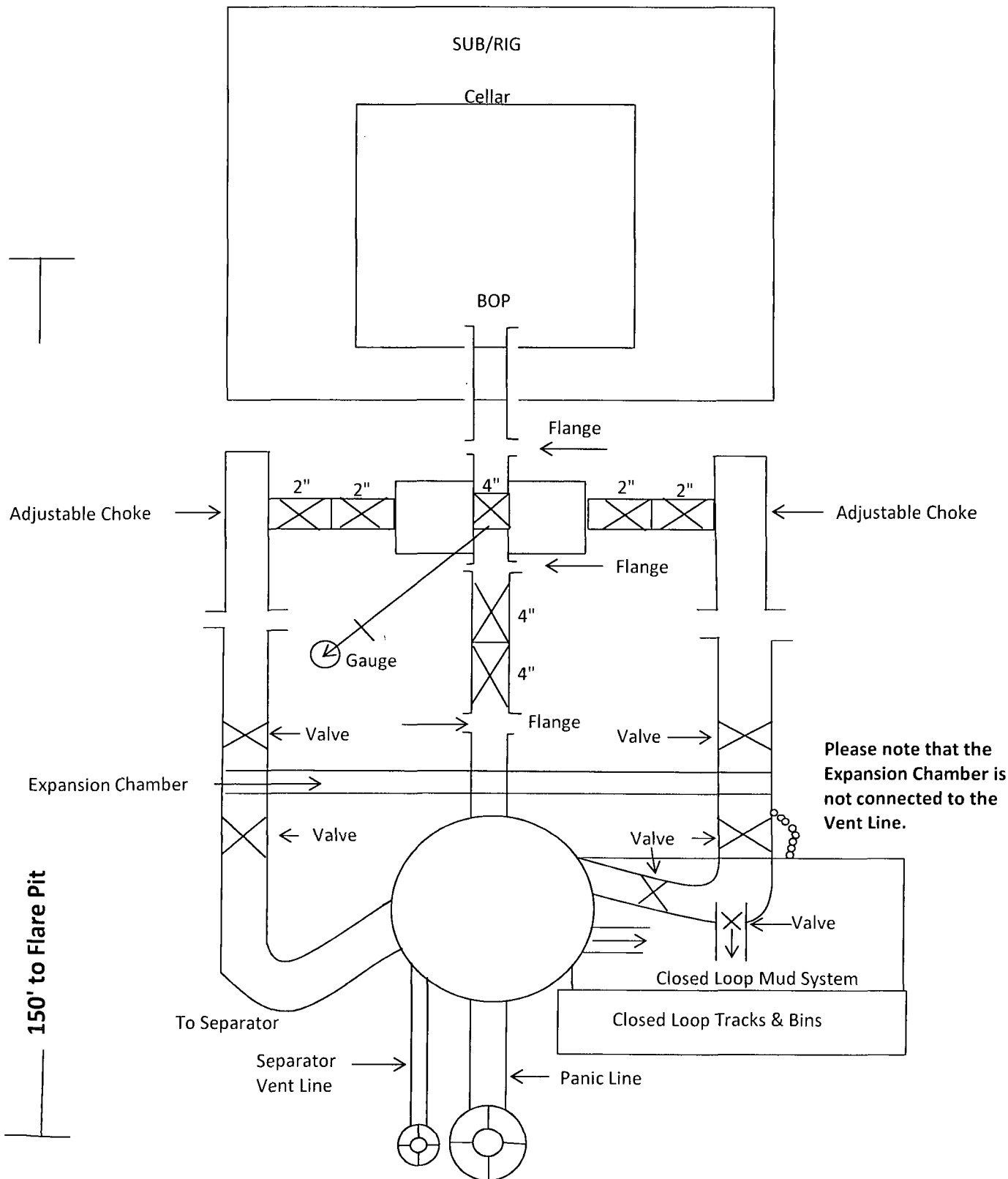
2,000 psi BOP Schematic



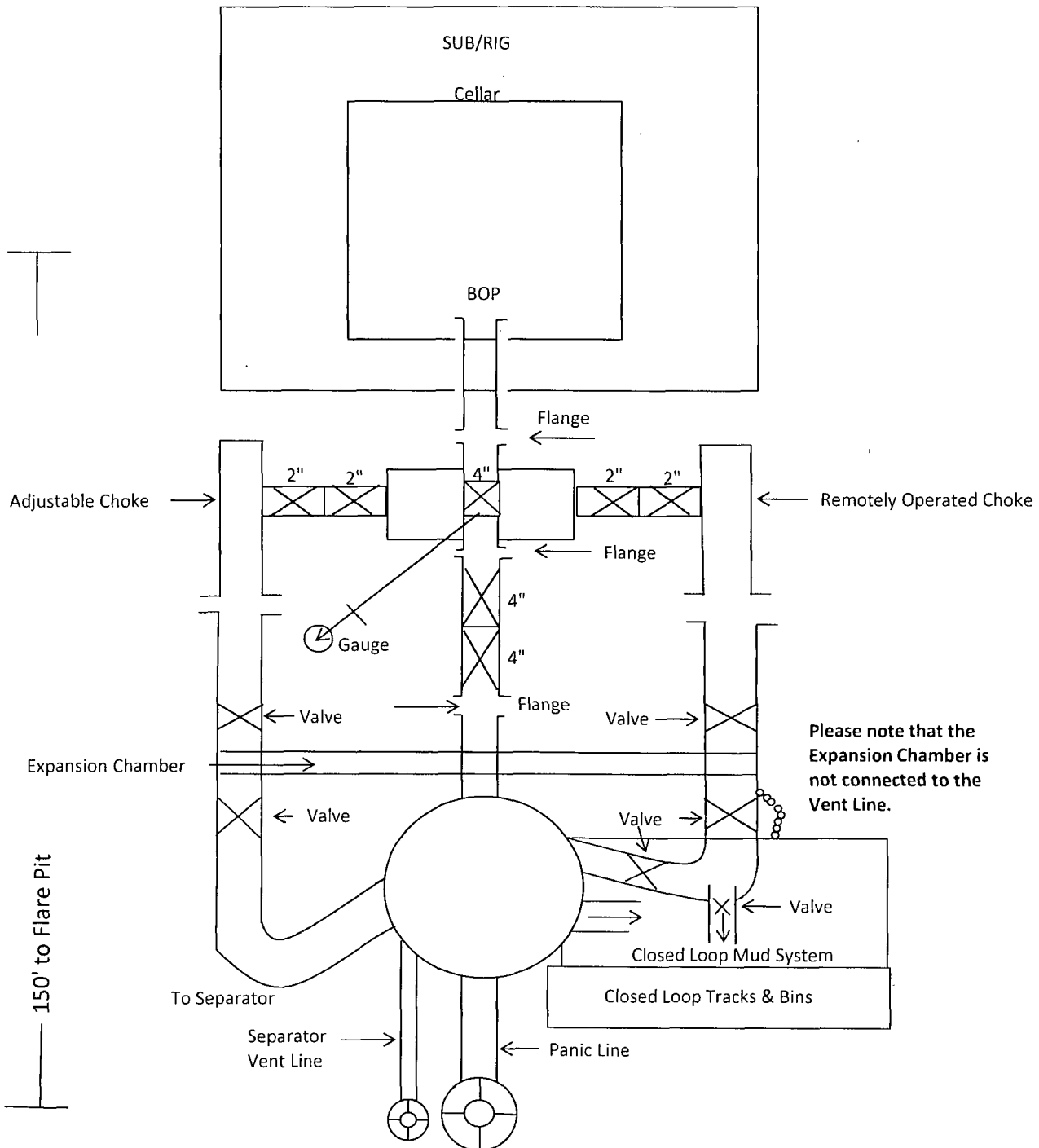
3,000 psi BOP Schematic



2M Choke Manifold Equipment

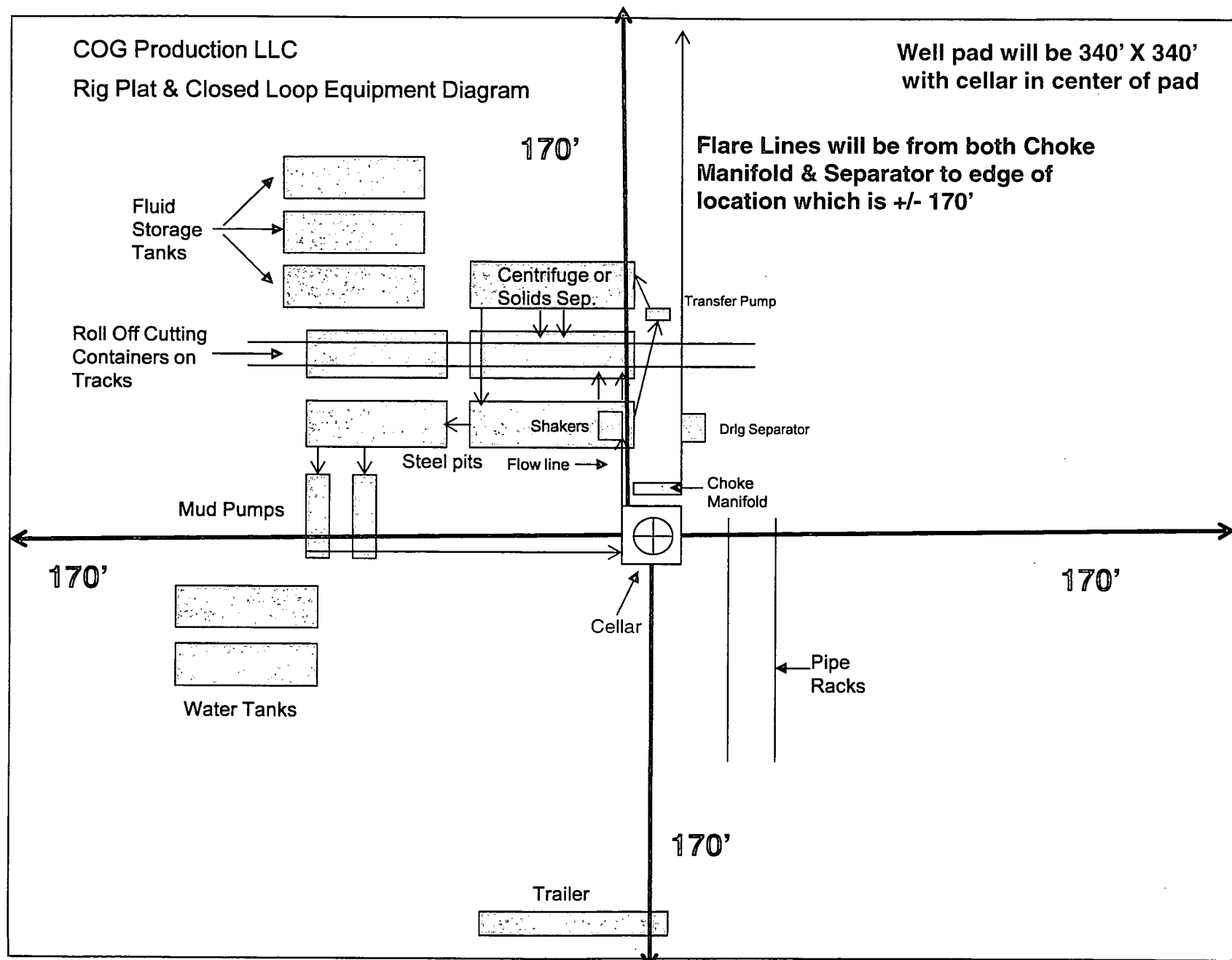


3M Choke Manifold Equipment



COG Production LLC
Rig Plat & Closed Loop Equipment Diagram

Well pad will be 340' X 340'
with cellar in center of pad



Flare Lines will be from both Choke
Manifold & Separator to edge of
location which is +/- 170'

Exhibit 1

"I further certify that COG will comply with Rule 19.15.17
NMAC by using a Closed Loop System."

COG PRODUCTION LLC
HYDROGEN SULFIDE DRILLING OPERATIONS PLAN

1. HYDROGEN SULFIDE TRAINING

All personnel, whether regularly assigned, contracted, or employed on an unscheduled basis, will receive training from a qualified instructor in the following areas prior to commencing drilling operations on this well:

- a. The hazards and characteristics of hydrogen sulfide (H₂S).
- b. The proper use and maintenance of personal protective equipment and life support systems.
- c. The proper use of H₂S detectors, alarms, warning systems, briefing areas, evacuation procedures, and prevailing winds.
- d. The proper techniques for first aid and rescue procedures.

In addition, supervisory personnel will be trained in the following areas:

- a. The effects of H₂S on metal components. If high tensile tubulars are to be used, personnel will be trained in their special maintenance requirements.
- b. Corrective action and shut-in procedures when drilling or reworking a well and blowout prevention and well control procedures.
- c. The contents and requirements of the H₂S Drilling Operations Plan and the Public Protection Plan.

There will be an initial training session just prior to encountering a known or probable H₂S zone (within 3 days or 500 feet) and weekly H₂S and well control drills for all personnel in each crew. The initial training session shall include a review of the site specific H₂S Drilling Operations Plan and the Public Protection Plan. This plan shall be available at the well site. All personnel will be required to carry documentation that they have received the proper training.

2. H₂S SAFETY EQUIPMENT AND SYSTEMS

Note: All H₂S safety equipment and systems will be installed, tested, and operational when drilling reaches a depth of 500 feet above, or three days prior to penetrating the first zone containing or reasonably expected to contain H₂S. If H₂S greater than 100 ppm is encountered in the gas stream we will shut in and install H₂S equipment.

- a. Well Control Equipment:
 - Flare line.
 - Choke manifold with remotely operated choke.
 - Blind rams and pipe rams to accommodate all pipe sizes with properly sized closing unit.
 - Auxiliary equipment to include: annular preventer, mud-gas separator, rotating head.

- b. Protective equipment for essential personnel:
Mark II Surviveair 30-minute units located in the dog house and at briefing areas.
- c. H2S detection and monitoring equipment:
2 - portable H2S monitor positioned on location for best coverage and response. These units have warning lights and audible sirens when H2S levels of 20 ppm are reached.
- d. Visual warning systems:
Caution/Danger signs shall be posted on roads providing direct access to location. Signs will be painted a high visibility yellow with black lettering of sufficient size to be readable at a reasonable distance from the immediate location. Bilingual signs will be used, when appropriate. See example attached.
- e. Mud Program:
The mud program has been designed to minimize the volume of H2S circulated to the surface.
- f. Metallurgy:
All drill strings, casings, tubing, wellhead, blowout preventers, drilling spool, kill lines, choke manifold and lines, and valves shall be suitable for H2S service.
- g. Communication:
Company vehicles equipped with cellular telephone.

COG PRODUCTION LLC has conducted a review to determine if an H2S contingency plan is required for the above referenced well. We were able to conclude that any potential hazardous volume would be minimal. H2S concentrations of wells in this area from surface to TD are low enough; therefore, we do not believe that an H2S contingency plan is necessary.

W A R N I N G

**YOU ARE ENTERING AN H₂S AREA
AUTHORIZED PERSONNEL ONLY**

- 1. BEARDS OR CONTACT LENSES NOT ALLOWED***
- 2. HARD HATS REQUIRED***
- 3. SMOKING IN DESIGNATED AREAS ONLY***
- 4. BE WIND CONSCIOUS AT ALL TIMES***
- 5. CK WITH COG OPERATING LLC FOREMAN AT MAIN OFFICE***

COG PRODUCTION LLC

1-575-748-6940

EMERGENCY CALL LIST

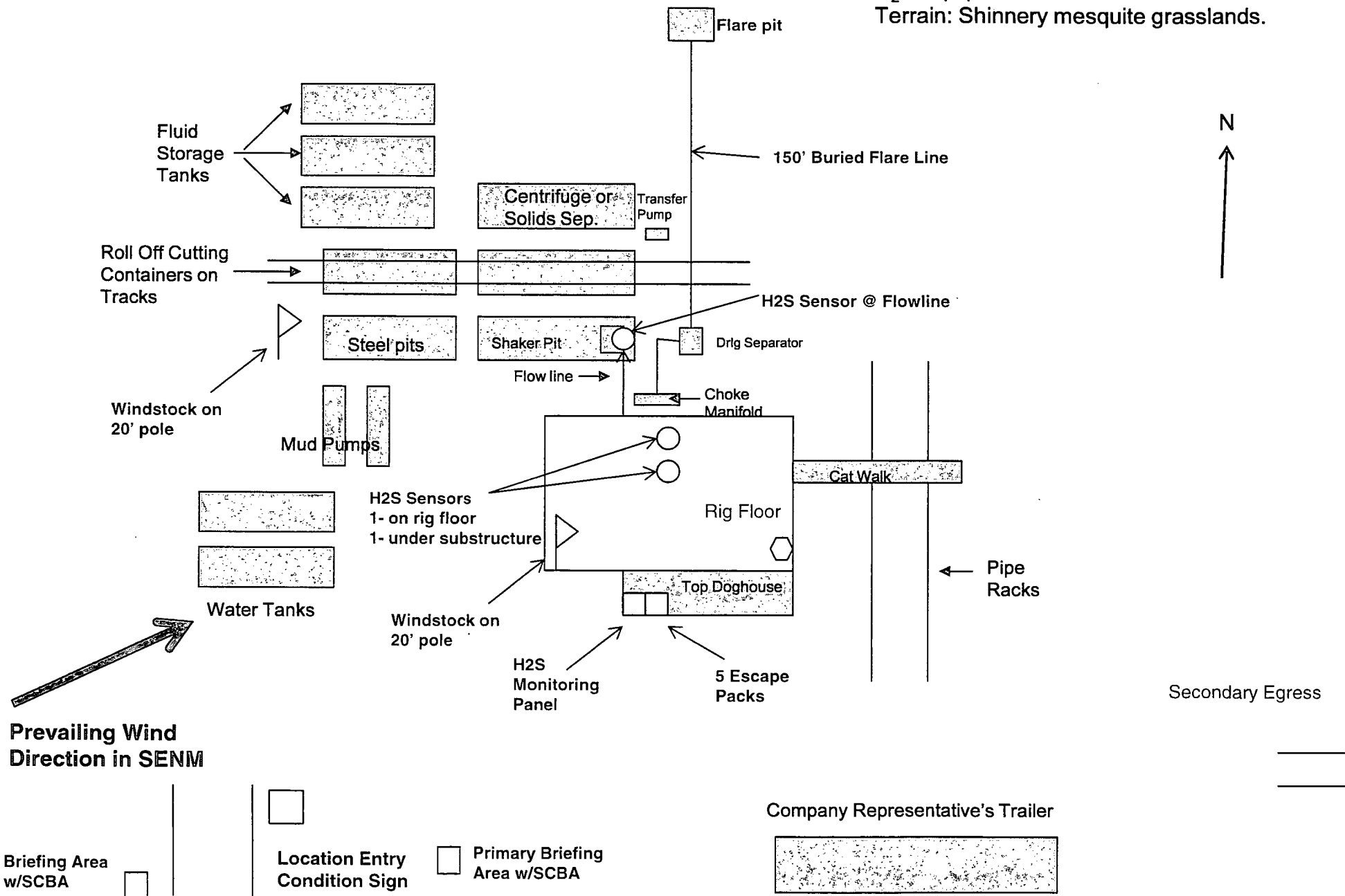
	<u>OFFICE</u>	<u>MOBILE</u>
COG PRODUCTION LLC OFFICE	575-748-6940	
SHERYL BAKER	575-748-6940	432-934-1873
KENT GREENWAY	575-746-2010	432-557-1694
SETH WILD	432-683-7443	432-528-3633
WALTER ROYE	575-748-6940	432-934-1886

EMERGENCY RESPONSE NUMBERS

	<u>OFFICE</u>
STATE POLICE	575-748-9718
EDDY COUNTY SHERIFF	575-746-2701
EMERGENCY MEDICAL SERVICES (AMBULANCE)	911 or 575-746-2701
EDDY COUNTY EMERGENCY MANAGEMENT (HARRY BURGESS)	575-887-9511
STATE EMERGENCY RESPONSE CENTER (SERC)	575-476-9620
CARLSBAD POLICE DEPARTMENT	575-885-2111
CARLSBAD FIRE DEPARTMENT	575-885-3125
NEW MEXICO OIL CONSERVATION DIVISION	575-748-1283
INDIAN FIRE & SAFETY	800-530-8693
HALLIBURTON SERVICES	800-844-8451

Well pad will be 340' X 340'
with cellar in center of pad

COG Production LLC
H₂S Equipment Schematic
Terrain: Shinnery mesquite grasslands.





COG Production LLC

2208 West Main

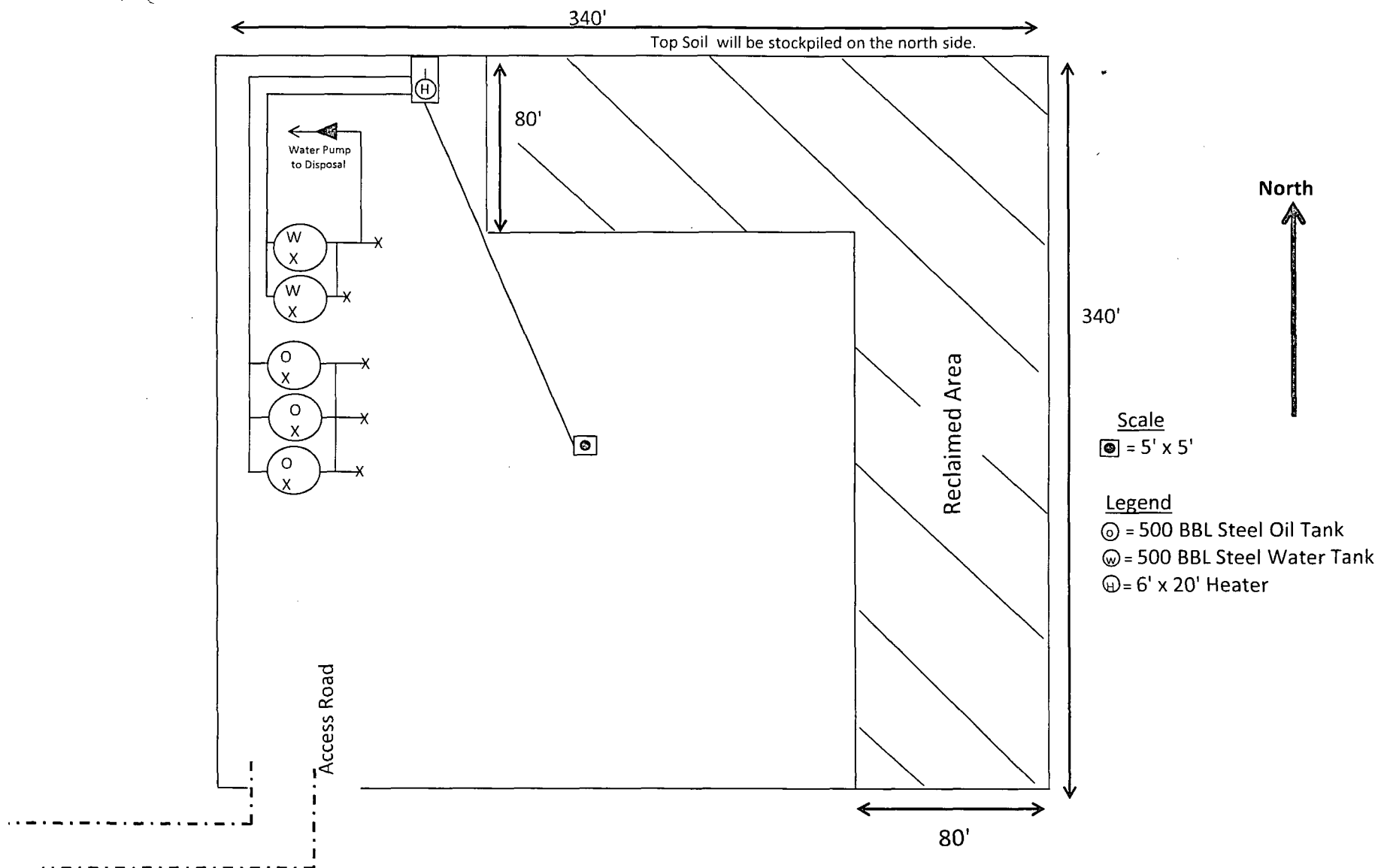
Artesia, NM 88210

Production Facility Layout

El Jimador Federal #3H

Section 23-T25S-R29E

Exhibit 3



Surface Use Plan
COG Production LLC
El Jimador Federal #3H
SHL: 190' FSL & 1650' FWL UL N
Section 23, T25S, R29E
BHL: 330' FNL & 1750' FWL UL C
Section 23, T25S, R29E
Eddy County, New Mexico

Surface Use & Operating Plan

El Jimador Federal #3H

- Surface Tenant: W. P. Ranches Family Partnership, Box 24, Cherokee, TX 76832
- New Road: 3000'
- Flow Line: On well pad
- Facilities: Will be constructed on well pad – see Exhibit 3

Well Site Information

V Door: East

Topsoil: North

Interim Reclamation: North and East

Notes

Onsite: On-site was done by Legion Brumley (BLM); Eric Conklin (COG) on August 1, 2013.

Surface Use Plan
COG Production LLC
El Jimador Federal #3H
SHL: 190' FSL & 1650' FWL UL N
Section 23, T25S, R29E
BHL: 330' FNL & 1750' FWL UL C
Section 23, T25S, R29E
Eddy County, New Mexico

SURFACE USE AND OPERATING PLAN

1. Existing & Proposed Access Roads

- A. The well site survey and elevation plat for the proposed well is attached with this application. It was staked by Harcrow Surveying, Artesia, NM.
- B. All roads to the location are shown on the Location Verification Map Exhibit 2. The existing lease roads are illustrated and are adequate for travel during drilling and production operations. Upgrading existing roads prior to drilling the well will be done where necessary. The road route to the well site is depicted in Exhibit #2. The road shown in Exhibit #2 will be used to access the well.
- C. Directions to location: See 600 x 600 plat
- D. Routine grading and maintenance of existing roads will be conducted as necessary to maintain their condition as long as any operations continue on this lease. Roads will be maintained according to specifications in section 2A of this Surface Use and Operating Plan.

2. Proposed Access Road:

The Location Verification Map shows that 3000' of new access road will be required for this location. If any road is required it will be constructed as follows:

The maximum width of the running surface will be 14'. The road will be crowned, ditched and constructed of 6" rolled and compacted caliche. Ditches will be at 3:1 slope and 4 feet wide. Water will be diverted where necessary to avoid ponding, prevent erosion, maintain good drainage, and to be consistent with local drainage patterns.

- A. The average grade will be less than 1%.
- B. No turnouts are planned.
- C. There is a culvert as indicated on the Location Verification Map. No cattleguard, gates, low water crossings or fence cuts are necessary.
- D. Surfacing material will consist of native caliche. Caliche will be obtained from the actual well site if available. If not available onsite, caliche will be hauled from the nearest BLM approved caliche pit.

Surface Use Plan
COG Production LLC
El Jimador Federal #3H
SHL: 190' FSL & 1650' FWL UL N
Section 23, T25S, R29E
BHL: 330' FNL & 1750' FWL UL C
Section 23, T25S, R29E
Eddy County, New Mexico

3. Location of Existing Well:

The One-Mile Radius Map shows existing wells within a one-mile radius of surface hole location and the bottom hole location.

4. Location of Existing and/or Proposed Facilities:

- A. COG Production LLC does operate an oil production facility on this Lease.
- B. If the well is productive, contemplated facilities will be as follows:
 - 1) A tank battery and facilities will be constructed as shown on Exhibit 3.
 - 2) The tank battery and facilities including all flow lines and piping will be installed according to API specifications.
 - 3) Any additional caliche will be obtained from the actual well site. If caliche does not exist or is not plentiful from the well site, the caliche will be hauled from a BLM approved caliche pit. Any additional construction materials will be purchased from contractors.
 - 4) It will be necessary to run electric power if this well is productive. Power will be provided by Xcel Energy and they will submit a separate plan and ROW for service to the well location.
 - 5) If the well is productive, rehabilitation plans will include the following:
 - The original topsoil from the well site will be returned to the location, and the site will be re-contoured as close as possible to the original site.

5. Location and Type of Water Supply:

The well will be drilled with combination brine and fresh water mud system as outlined in the drilling program. The water will be obtained from commercial water stations in the area and hauled to location by transport truck over the existing and proposed access roads shown in Exhibit #2. If a commercial fresh water source is nearby, fast line may be laid along existing road ROW's and fresh water pumped to the well. No water well will be drilled on the location.

6. Source of Construction Materials and Location "Turn-Over" Procedure:

Obtaining caliche: One primary way of obtaining caliche to build locations and roads will be by "turning over" the location. This means, caliche will be obtained from the actual well site. A caliche permit will be obtained from BLM prior to obtaining caliche. 2400 cubic yards is the maximum amount of caliche needed for pad and roads. Amount will vary for each pad. The procedure below has been approved by BLM personnel:

- A. The top 6 inches of topsoil is pushed off and stockpiled along the side of the location.
- B. An approximate 160' X 160' area is used within the proposed well site to remove caliche.
- C. Subsoil is removed and stockpiled within the surveyed well pad.
- D. When caliche is found, material will be stock piled within the pad site to build the location and road.
- E. Then subsoil is pushed back in the hole and caliche is spread accordingly across entire location and road.
- F. Once well is drilled, the stock piled top soil will be used for interim reclamation and spread along areas where caliche is picked up and the location size is reduced.
- G. Neither caliche, nor subsoil will be stock piled outside of the well pad. Topsoil will be stockpiled along the edge of the pad as depicted in the Well Site Layout or survey plat.

In the event that no caliche is found onsite, caliche will be hauled in from a BLM approved caliche pit or other established mineral pit. A BLM mineral material permit will be acquired prior to obtaining any mineral material from BLM pits or land.

7. Methods of Handling Water Disposal:

- A. The well will be drilled utilizing a closed loop mud system. Drill cuttings will be held in roll-off style mud boxes and taken to an NMOCD approved disposal site.
- B. Drilling fluids will be contained in steel mud pits.
- C. Water produced from the well during completion will be held temporarily in steel tanks and then taken to an NMOCD approved commercial disposal facility.

Surface Use Plan
COG Production LLC
El Jimador Federal #3H
SHL: 190' FSL & 1650' FWL UL N
Section 23, T25S, R29E
BHL: 330' FNL & 1750' FWL UL C
Section 23, T25S, R29E
Eddy County, New Mexico

- D. Garbage and trash produced during drilling or completion operations will be collected in a trash bin and hauled to an approved landfill. No toxic waste or hazardous chemicals will be produced by this operation.
- E. Human waste and grey water will need to be properly contained and disposed of. Proper disposal and elimination of waste and grey water may include but are not limited to portable septic systems and/or portable waste gathering systems (i.e. portable toilets).
- F. After the rig is moved out and the well is either completed or abandoned, all waste materials will be cleaned up within 30 days. In the event of a dry hole only a dry hole marker will remain.

8. Ancillary Facilities:

No airstrip, campsite or other facilities will be built as a result of the operation on this well.

9. Well Site Layout:

- A. The drill pad layout, with elevations staked by Harcrow Surveying, is shown in the Elevation Plat. Dimensions of the pad and pits are shown on the Rig Layout. V door direction is East. Topsoil, if available, will be stockpiled per BLM specifications. Because the pad is almost level no major cuts will be required.
- B. The Rig Layout Closed-Loop exhibit shows the proposed orientation of closed loop system and access road. No permanent living facilities are planned, but a temporary foreman/toolpusher's trailer will be on location during the drilling operations.

10. Plans for Restoration of the Surface:

- A. Interim Reclamation will take place after the well has been completed. The pad will be downsized by reclaiming the areas not needed for production operations. The portions of the pad that are not needed for production operations will be re-contoured to its original state as much as possible. The caliche that is removed will be reused to either build another pad site or for road repairs within the lease. The stockpiled topsoil will then be spread out reclaimed area and reseeded with a BLM approved seed mixture. In the event that the well must be worked over or maintained, it may be necessary to drive, park, and/or operate machinery on reclaimed land. This area will be repaired or reclaimed after work is complete.

Surface Use Plan
COG Production LLC
El Jimador Federal #3H
SHL: 190' FSL & 1650' FWL UL N
Section 23, T25S, R29E
BHL: 330' FNL & 1750' FWL UL C
Section 23, T25S, R29E
Eddy County, New Mexico

- B. Final Reclamation: Upon plugging and abandoning the well all caliche for well pad and lease road will be removed and surface will be recountoured to reflect its surroundings as much as possible. Caliche will be recycled for road repair or reused for another well pad within the lease. If any topsoil remains, it will be spread out and the area will be re-seeded with a BLM approved mixture and re-vegetated as per BLM orders.

11. Surface Ownership:

- A. The surface is owned by the U.S. Government and is administered by the Bureau of Land Management. The surface is multiple uses with the primary uses of the region for grazing of livestock and the production of oil and gas.
- B. The surface tenant is W. P. Ranches Family Limited Partnership, Box 24, Cherokee, TX 76832.
- C. The proposed road routes and surface location will be restored as directed by the BLM.

12. Other Information:

- A. The area around the well site is grassland and the topsoil is sandy. The vegetation is moderately sparse with native prairie grasses, some mesquite and shinnery oak. No wildlife was observed but it is likely that mule deer, rabbits, coyotes and rodents traverse the area.
- B. There is no permanent or live water in the immediate area.
- C. There are no dwellings within 2 miles of this location.
- D. If needed, a Cultural Resources Examination is being prepared by Boone Arch Services of NM, LLC., 2030 North Canal, Carlsbad, New Mexico, 88220, phone # 575-885-1352 and the results will be forwarded to your office in the near future. Otherwise, **COG will be participating in the Permian Basin MOA Program.**

13. Bond Coverage:

Bond Coverage is Statewide Bonds # NMB000845 and NMB000860

Surface Use Plan
COG Production LLC
El Jimador Federal #3H
SHL: 190' FSL & 1650' FWL UL N
Section 23, T25S, R29E
BHL: 330' FNL & 1750' FWL UL C
Section 23, T25S, R29E
Eddy County, New Mexico

14. Lessee's and Operator's Representative:

The COG Production LLC representative responsible for assuring compliance with the surface use plan is as follows:

Sheryl Baker
Drilling Superintendent
COG Production LLC
2208 West Main Street
Artesia, NM 88210
Phone (575) 748-6940 (office)
(432) 934-1873 (cell)

Ray Peterson
Drilling Manager
COG Production LLC
One Concho Center
600 W Illinois Ave
Midland, TX 79701
Phone (432) 685-4304 (office)
(432) 818-2254 (business)

PECOS DISTRICT CONDITIONS OF APPROVAL

OPERATOR'S NAME:	COG Operating LLC
LEASE NO.:	NMNM-120895
WELL NAME & NO.:	El Jimador Federal 3H
SURFACE HOLE FOOTAGE:	0190' FSL & 1650' FWL
BOTTOM HOLE FOOTAGE	0330' FNL & 1750' FWL
LOCATION:	Section 23, T. 25 S., R 29 E., NMPM
COUNTY:	Eddy County, New Mexico

TABLE OF CONTENTS

Standard Conditions of Approval (COA) apply to this APD. If any deviations to these standards exist or special COAs are required, the section with the deviation or requirement will be checked below.

- ☐ **General Provisions**
- ☐ **Permit Expiration**
- ☐ **Archaeology, Paleontology, and Historical Sites**
- ☐ **Noxious Weeds**
- ☐ **Special Requirements**
- ☐ **Construction**
 - Notification
 - Topsoil
 - Closed Loop System
 - Federal Mineral Material Pits
 - Well Pads
 - Roads
- ☐ **Road Section Diagram**
- ☒ **Drilling**
 - Cement Requirements
 - Medium Cave/Karst
 - Logging Requirements
 - Waste Material and Fluids
- ☒ **Production (Post Drilling)**
 - Well Structures & Facilities
 - Pipelines
 - Electric Lines
- ☐ **Interim Reclamation**
- ☐ **Final Abandonment & Reclamation**

I. GENERAL PROVISIONS

The approval of the Application For Permit To Drill (APD) is in compliance with all applicable laws and regulations: 43 Code of Federal Regulations 3160, the lease terms, Onshore Oil and Gas Orders, Notices To Lessees, New Mexico Oil Conservation Division (NMOCD) Rules, National Historical Preservation Act As Amended, and instructions and orders of the Authorized Officer. Any request for a variance shall be submitted to the Authorized Officer on Form 3160-5, Sundry Notices and Report on Wells.

II. PERMIT EXPIRATION

If the permit terminates prior to drilling and drilling cannot be commenced within 60 days after expiration, an operator is required to submit Form 3160-5, Sundry Notices and Reports on Wells, requesting surface reclamation requirements for any surface disturbance. However, if the operator will be able to initiate drilling within 60 days after the expiration of the permit, the operator must have set the conductor pipe in order to allow for an extension of 60 days beyond the expiration date of the APD. (Filing of a Sundry Notice is required for this 60 day extension.)

III. ARCHAEOLOGICAL, PALEONTOLOGY & HISTORICAL SITES

Any cultural and/or paleontological resource discovered by the operator or by any person working on the operator's behalf shall immediately report such findings to the Authorized Officer. The operator is fully accountable for the actions of their contractors and subcontractors. The operator shall suspend all operations in the immediate area of such discovery until written authorization to proceed is issued by the Authorized Officer. An evaluation of the discovery shall be made by the Authorized Officer to determine the appropriate actions that shall be required to prevent the loss of significant cultural or scientific values of the discovery. The operator shall be held responsible for the cost of the proper mitigation measures that the Authorized Officer assesses after consultation with the operator on the evaluation and decisions of the discovery. Any unauthorized collection or disturbance of cultural or paleontological resources may result in a shutdown order by the Authorized Officer.

IV. NOXIOUS WEEDS

The operator shall be held responsible if noxious weeds become established within the areas of operations. Weed control shall be required on the disturbed land where noxious weeds exist, which includes the roads, pads, associated pipeline corridor, and adjacent land affected by the establishment of weeds due to this action. The operator shall consult with the Authorized Officer for acceptable weed control methods, which include following EPA and BLM requirements and policies.

V. SPECIAL REQUIREMENT(S)

VI. CONSTRUCTION

A. NOTIFICATION

The BLM shall administer compliance and monitor construction of the access road and well pad. Notify the Carlsbad Field Office at (575) 234-5909 at least 3 working days prior to commencing construction of the access road and/or well pad.

When construction operations are being conducted on this well, the operator shall have the approved APD and Conditions of Approval (COA) on the well site and they shall be made available upon request by the Authorized Officer.

B. TOPSOIL

The operator shall strip the top portion of the soil (root zone) from the entire well pad area and stockpile the topsoil along the edge of the well pad as depicted in the APD. The root zone is typically six (6) inches in depth. All the stockpiled topsoil will be redistributed over the interim reclamation areas. Topsoil shall not be used for berming the pad or facilities. For final reclamation, the topsoil shall be spread over the entire pad area for seeding preparation.

Other subsoil (below six inches) stockpiles must be completely segregated from the topsoil stockpile. Large rocks or subsoil clods (not evident in the surrounding terrain) must be buried within the approved area for interim and final reclamation.

C. CLOSED LOOP SYSTEM

Tanks are required for drilling operations: No Pits.

The operator shall properly dispose of drilling contents at an authorized disposal site.

D. FEDERAL MINERAL MATERIALS PIT

Payment shall be made to the BLM prior to removal of any federal mineral materials. Call the Carlsbad Field Office at (575) 234-5972.

E. WELL PAD SURFACING

Surfacing of the well pad is not required.

If the operator elects to surface the well pad, the surfacing material may be required to be removed at the time of reclamation. The well pad shall be constructed in a manner which

creates the smallest possible surface disturbance, consistent with safety and operational needs.

F. EXCLOSURE FENCING (CELLARS & PITS)

Exclosure Fencing

The operator will install and maintain exclosure fencing for all open well cellars to prevent access to public, livestock, and large forms of wildlife before and after drilling operations until the pit is free of fluids and the operator initiates backfilling. (For examples of exclosure fencing design, refer to BLM's Oil and Gas Gold Book, Exclosure Fence Illustrations, Figure 1, Page 18.)

G. ON LEASE ACCESS ROADS

Road Width

The access road shall have a driving surface that creates the smallest possible surface disturbance and does not exceed fourteen (14) feet in width. The maximum width of surface disturbance, when constructing the access road, shall not exceed twenty-five (25) feet.

Surfacing

Surfacing material is not required on the new access road driving surface. If the operator elects to surface the new access road or pad, the surfacing material may be required to be removed at the time of reclamation.

Where possible, no improvements should be made on the unsurfaced access road other than to remove vegetation as necessary, road irregularities, safety issues, or to fill low areas that may sustain standing water.

The Authorized Officer reserves the right to require surfacing of any portion of the access road at any time deemed necessary. Surfacing may be required in the event the road deteriorates, erodes, road traffic increases, or it is determined to be beneficial for future field development. The surfacing depth and type of material will be determined at the time of notification.

Crowning

Crowning shall be done on the access road driving surface. The road crown shall have a grade of approximately 2% (i.e., a 1" crown on a 14' wide road). The road shall conform to Figure 1; cross section and plans for typical road construction.

Ditching

Ditching shall be required on both sides of the road.

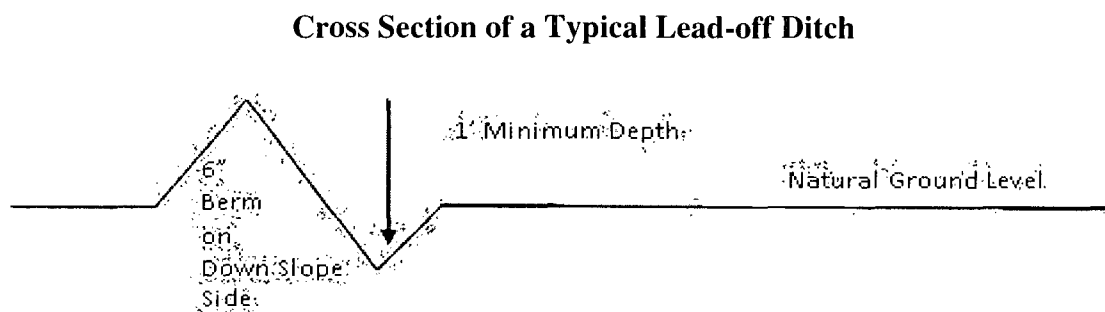
Turnouts

Vehicle turnouts shall be constructed on the road. Turnouts shall be intervisible with interval spacing distance less than 1000 feet. Turnouts shall conform to Figure 1; cross section and plans for typical road construction.

Drainage

Drainage control systems shall be constructed on the entire length of road (e.g. ditches, sidehill outslowing and insloping, lead-off ditches, culvert installation, and low water crossings).

A typical lead-off ditch has a minimum depth of 1 foot below and a berm of 6 inches above natural ground level. The berm shall be on the down-slope side of the lead-off ditch.



All lead-off ditches shall be graded to drain water with a 1 percent minimum to 3 percent maximum ditch slope. The spacing interval are variable for lead-off ditches and shall be determined according to the formula for spacing intervals of lead-off ditches, but may be amended depending upon existing soil types and centerline road slope (in %);

Formula for Spacing Interval of Lead-off Ditches

Example - On a 4% road slope that is 400 feet long, the water flow shall drain water into a lead-off ditch. Spacing interval shall be determined by the following formula:

$$400 \text{ foot road with } 4\% \text{ road slope: } \frac{400'}{4\%} + 100' = 200' \text{ lead-off ditch interval}$$

Cattleguards

An appropriately sized cattleguard sufficient to carry out the project shall be installed and maintained at fence/road crossings. Any existing cattleguards on the access road route shall be repaired or replaced if they are damaged or have deteriorated beyond practical use. The operator shall be responsible for the condition of the existing cattleguards that are in place and are utilized during lease operations.

Fence Requirement

Where entry is granted across a fence line, the fence shall be braced and tied off on both sides of the passageway prior to cutting. The operator shall notify the private surface landowner or the grazing allotment holder prior to crossing any fences.

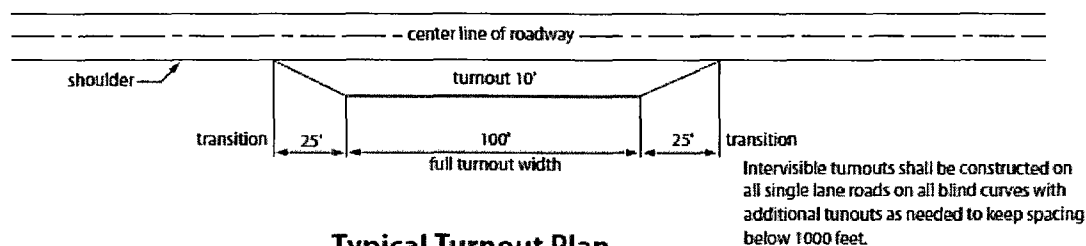
Public Access

Public access on this road shall not be restricted by the operator without specific written approval granted by the Authorized Officer.

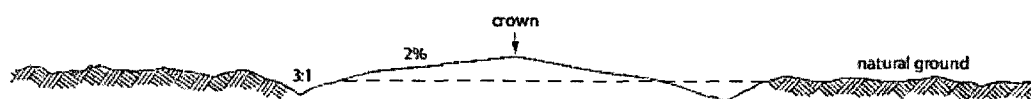
Construction Steps

1. Salvage topsoil
2. Construct road

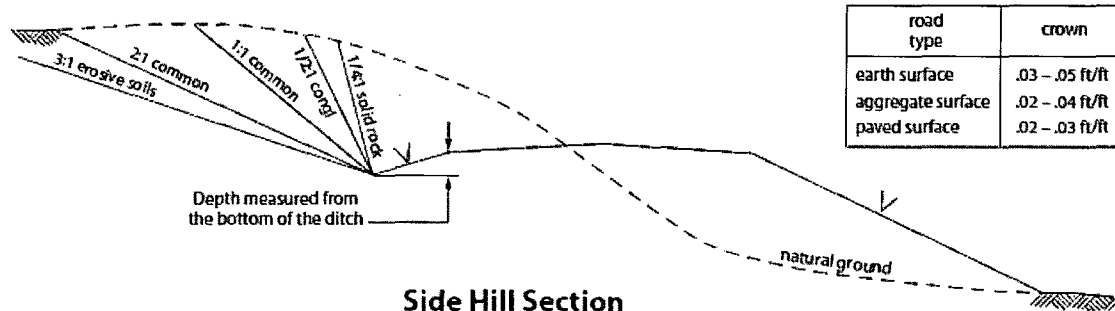
3. Redistribute topsoil
4. Revegetate slopes



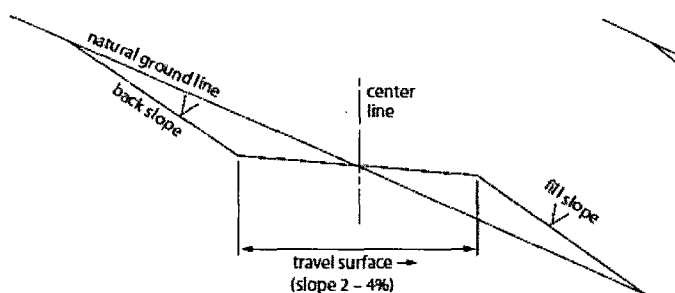
Typical Turnout Plan



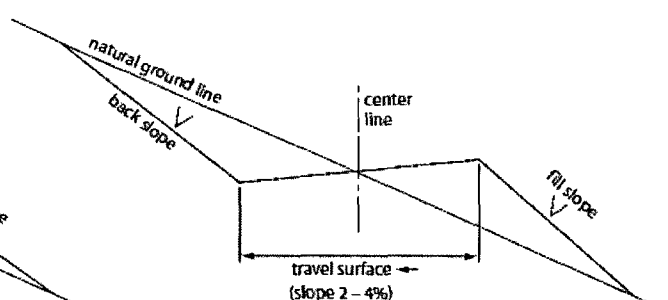
Level Ground Section



Side Hill Section



Typical Outsloped Section



Typical Insloped Section

Figure 1. Cross-sections and plans for typical road sections representative of BLM resource or FS local and higher-class roads.

VII. DRILLING

A. DRILLING OPERATIONS REQUIREMENTS

The BLM is to be notified in advance for a representative to witness:

- a. Spudding well (minimum of 24 hours)
- b. Setting and/or Cementing of all casing strings (minimum of 4 hours)
- c. BOPE tests (minimum of 4 hours)

☒ **Eddy County**

Call the Carlsbad Field Office, 620 East Greene St., Carlsbad, NM 88220,
(575) 361-2822

1. **Operator has stated that Hydrogen Sulfide (H₂S) monitors will be installed prior to drilling out the surface shoe. If H₂S is detected in concentrations greater than 100 ppm, the Hydrogen Sulfide area shall meet Onshore Order 6 requirements, which includes equipment and personnel/public protection items. If Hydrogen Sulfide is encountered, provide measured values and formations to the BLM.**
2. Unless the production casing has been run and cemented or the well has been properly plugged, the drilling rig shall not be removed from over the hole without prior approval. **If the drilling rig is removed without approval – an Incident of Non-Compliance will be written and will be a “Major” violation.**
3. Floor controls are required for 3M or Greater systems. These controls will be on the rig floor, unobstructed, readily accessible to the driller and will be operational at all times during drilling and/or completion activities. Rig floor is defined as the area immediately around the rotary table; the area immediately above the substructure on which the draw works is located, this does not include the dog house or stairway area.
4. **The record of the drilling rate along with the GR/N well log run from TD to surface (horizontal well – vertical portion of hole) shall be submitted to the BLM office as well as all other logs run on the borehole 30 days from completion. If available, a digital copy of the logs is to be submitted in addition to the paper copies. The Rustler top and top and bottom of Salt are to be recorded on the Completion Report.**

B. CASING

Changes to the approved APD casing program need prior approval if the items substituted are of lesser grade or different casing size. The Operator can exchange the components of the proposal with that of superior strength (i.e. changing from J-55 to N-80, or from 36# to 40#). Changes to the approved cement program need prior approval if the altered cement plan has less volume or strength or if the changes are substantial (i.e. Multistage tool, ECP, etc.).

Centralizers required on surface casing per Onshore Order 2.III.B.1.f.

Wait on cement (WOC) time prior to drilling out for a primary cement job will be a minimum 18 hours for a water basin, 24 hours in the potash area, or 500 pounds compressive strength, whichever is greater for all casing strings. DURING THIS WOC TIME, NO DRILL PIPE, ETC. SHALL BE RUN IN THE HOLE. Provide compressive strengths including hours to reach required 500 pounds compressive strength prior to cementing each casing string. IF OPERATOR DOES NOT HAVE THE WELL SPECIFIC CEMENT DETAILS ONSITE PRIOR TO PUMPING THE CEMENT FOR EACH CASING STRING, THE WOC WILL BE 30 HOURS. See individual casing strings for details regarding lead cement slurry requirements.

No pea gravel permitted for remedial or fall back remedial without prior authorization from the BLM engineer.

Medium Cave/Karst

Possibility of water and brine flows in the Salado, Castile, and Delaware.

Possibility of lost circulation in the Rustler and Delaware.

1. The **13-3/8** inch surface casing shall be set at approximately **725** feet (a minimum of 25 feet into the Rustler Anhydrite and above the salt) and cemented to the surface. **If salt is encountered, set casing at least 25 feet above the salt.**
 - a. If cement does not circulate to the surface, the appropriate BLM office shall be notified and a temperature survey utilizing an electronic type temperature survey with surface log readout will be used or a cement bond log shall be run to verify the top of the cement. Temperature survey will be run a minimum of six hours after pumping cement and ideally between 8-10 hours after completing the cement job.
 - b. **Wait on cement (WOC) time for a primary cement job is to include the lead cement slurry.**
 - c. Wait on cement (WOC) time for a remedial job will be a minimum of 4 hours after bringing cement to surface or 500 pounds compressive strength, whichever is greater.
 - d. If cement falls back, remedial cementing will be done prior to drilling out that string.
2. The minimum required fill of cement behind the **9-5/8** inch intermediate casing is:
 - ☒ Cement to surface. If cement does not circulate see B.1.a, c-d above. **Wait on cement (WOC) time for a primary cement job is to include the lead cement slurry due to cave/karst.**

Centralizers required on horizontal leg, must be type for horizontal service and a minimum of one every other joint.

3. The minimum required fill of cement behind the **5-1/2** inch production casing is:

☒ Cement to surface. If cement does not circulate, contact the appropriate BLM office.

4. If hardband drill pipe is rotated inside casing, returns will be monitored for metal. If metal is found in samples, drill pipe will be pulled and rubber protectors which have a larger diameter than the tool joints of the drill pipe will be installed prior to continuing drilling operations.

C. PRESSURE CONTROL

1. All blowout preventer (BOP) and related equipment (BOPE) shall comply with well control requirements as described in Onshore Oil and Gas Order No. 2 and API RP 53 Sec. 17.

2. Minimum working pressure of the blowout preventer (BOP) and related equipment (BOPE) required for drilling below the surface casing shoe shall be **2000 (2M)** psi.

a. **For surface casing only:** If the BOP/BOPE is to be tested against casing, the wait on cement (WOC) time for that casing is to be met (see WOC statement at start of casing section). Independent service company required.

3. Minimum working pressure of the blowout preventer (BOP) and related equipment (BOPE) required for drilling below the **9-5/8** intermediate casing shoe shall be **3000 (3M)** psi.

4. The appropriate BLM office shall be notified a minimum of 4 hours in advance for a representative to witness the tests.

a. In a water basin, for all casing strings utilizing slips, these are to be set as soon as the crew and rig are ready and any fallback cement remediation has been done. The casing cut-off and BOP installation can be initiated four hours after installing the slips, which will be approximately six hours after bumping the plug. For those casing strings not using slips, the minimum wait time before cut-off is eight hours after bumping the plug. BOP/BOPE testing can begin after cut-off or once cement reaches 500 psi compressive strength (including lead when specified), whichever is greater. However, if the float does not hold, cut-off cannot be initiated until cement reaches 500 psi compressive strength (including lead when specified).

- b. The tests shall be done by an independent service company utilizing a test plug **not a cup or J-packer**. The operator also has the option of utilizing an independent tester to test without a plug (i.e. against the casing) pursuant to Onshore Order 2 with the pressure not to exceed 70% of the burst rating for the casing. Any test against the casing must meet the WOC time for water basin (18 hours) or potash (24 hours) or 500 pounds compressive strength, whichever is greater, prior to initiating the test (see casing segment as lead cement may be critical item).
- c. The test shall be run on a 5000 psi chart for a 2-3M BOP/BOP, on a 10000 psi chart for a 5M BOP/BOPE and on a 15000 psi chart for a 10M BOP/BOPE. If a linear chart is used, it shall be a one hour chart. A circular chart shall have a maximum 2 hour clock. If a twelve hour or twenty-four hour chart is used, tester shall make a notation that it is run with a two hour clock.
- d. The results of the test shall be reported to the appropriate BLM office.
- e. All tests are required to be recorded on a calibrated test chart. **A copy of the BOP/BOPE test chart and a copy of independent service company test will be submitted to the appropriate BLM office.**
- f. The BOP/BOPE test shall include a low pressure test from 250 to 300 psi. The test will be held for a minimum of 10 minutes if test is done with a test plug and 30 minutes without a test plug. This test shall be performed prior to the test at full stack pressure.

D. DRILL STEM TEST

If drill stem tests are performed, Onshore Order 2.III.D shall be followed.

E. WASTE MATERIAL AND FLUIDS

All waste (i.e. drilling fluids, trash, salts, chemicals, sewage, gray water, etc.) created as a result of drilling operations and completion operations shall be safely contained and disposed of properly at a waste disposal facility. No waste material or fluid shall be disposed of on the well location or surrounding area.

Porto-johns and trash containers will be on-location during fracturing operations or any other crew-intensive operations.

JAM 021314

VIII. PRODUCTION (POST DRILLING)

A. WELL STRUCTURES & FACILITIES

Placement of Production Facilities

Production facilities should be placed on the well pad to allow for maximum interim recontouring and revegetation of the well location.

Exclosure Netting (Open-top Tanks)

Immediately following active drilling or completion operations, the operator will take actions necessary to prevent wildlife and livestock access, including avian wildlife, to all open-topped tanks that contain or have the potential to contain salinity sufficient to cause harm to wildlife or livestock, hydrocarbons, or Resource Conservation and Recovery Act of 1976-exempt hazardous substances. At a minimum, the operator will net, screen, or cover open-topped tanks to exclude wildlife and livestock and prevent mortality. If the operator uses netting, the operator will cover and secure the open portion of the tank to prevent wildlife entry. The operator will net, screen, or cover the tanks until the operator removes the tanks from the location or the tanks no longer contain substances that could be harmful to wildlife or livestock. Use a maximum netting mesh size of 1 ½ inches. The netting must not be in contact with fluids and must not have holes or gaps.

Chemical and Fuel Secondary Containment and Exclosure Screening

The operator will prevent all hazardous, poisonous, flammable, and toxic substances from coming into contact with soil and water. At a minimum, the operator will install and maintain an impervious secondary containment system for any tank or barrel containing hazardous, poisonous, flammable, or toxic substances sufficient to contain the contents of the tank or barrel and any drips, leaks, and anticipated precipitation. The operator will dispose of fluids within the containment system that do not meet applicable state or U. S. Environmental Protection Agency livestock water standards in accordance with state law; the operator must not drain the fluids to the soil or ground. The operator will design, construct, and maintain all secondary containment systems to prevent wildlife and livestock exposure to harmful substances. At a minimum, the operator will install effective wildlife and livestock exclosure systems such as fencing, netting, expanded metal mesh, lids, and grate covers. Use a maximum netting mesh size of 1 ½ inches.

Open-Vent Exhaust Stack Exclosures

The operator will construct, modify, equip, and maintain all open-vent exhaust stacks on production equipment to prevent birds and bats from entering, and to discourage perching, roosting, and nesting. (*Recommended exclosure structures on open-vent exhaust stacks are in the shape of a cone.*) Production equipment includes, but may not be limited to, tanks, heater-treaters, separators, dehydrators, flare stacks, in-line units, and compressor mufflers.

Containment Structures

Proposed production facilities such as storage tanks and other vessels will have a secondary containment structure that is constructed to hold the capacity of 1.5 times the

largest tank, plus freeboard to account for precipitation, unless more stringent protective requirements are deemed necessary.

Painting Requirement

All above-ground structures including meter housing that are not subject to safety requirements shall be painted a flat non-reflective paint color, **Shale Green** from the BLM Standard Environmental Color Chart (CC-001: June 2008).

B. PIPELINES

BURIED PIPELINE STIPULATIONS

A copy of the application (Grant, APD, or Sundry Notice) and attachments, including conditions of approval, survey plat and/or map, will be on location during construction. BLM personnel may request to you a copy of your permit during construction to ensure compliance with all stipulations.

Holder agrees to comply with the following stipulations to the satisfaction of the Authorized Officer:

1. The Holder shall indemnify the United States against any liability for damage to life or property arising from the occupancy or use of public lands under this grant.
2. The Holder shall comply with all applicable Federal laws and regulations existing or hereafter enacted or promulgated. In any event, the holder shall comply with the Toxic Substances Control Act of 1976 as amended, 15 USC 2601 et seq. (1982) with regards to any toxic substances that are used, generated by or stored on the right-of-way or on facilities authorized under this right-of-way grant. (See 40 CFR Part 702-799 and especially, provisions on polychlorinated biphenyls, 40 CFR 761.1-761.193.) Additionally, any release of toxic substances (leaks, spills, etc.) in excess of the reportable quantity established by 40 CFR Part 117 shall be reported as required by the Comprehensive Environmental Response, Compensation, and Liability Act, section 102b. A copy of any report required or requested by any Federal agency or State government as a result of a reportable release or spill of any toxic substances shall be furnished to the authorized officer concurrent with the filing of the reports to the involved Federal agency or State government.
3. The holder agrees to indemnify the United States against any liability arising from the release of any hazardous substance or hazardous waste (as these terms are defined in the Comprehensive Environmental Response, Compensation and Liability Act of 1980, 42 U.S.C. 9601, et seq. or the Resource Conservation and Recovery Act, 42 U.S.C. 6901, et seq.) on the Right-of-Way (unless the release or threatened release is wholly unrelated to the Right-of-Way holder's activity on the Right-of-Way), or resulting from the activity of the Right-of-Way holder on the Right-of-Way. This agreement applies without regard to whether a release is caused by the holder, its agent, or unrelated third parties.

4. If, during any phase of the construction, operation, maintenance, or termination of the pipeline, any oil or other pollutant should be discharged from the pipeline system, impacting Federal lands, the control and total removal, disposal, and cleaning up of such oil or other pollutant, wherever found, shall be the responsibility of holder, regardless of fault. Upon failure of holder to control, dispose of, or clean up such discharge on or affecting Federal lands, or to repair all damages resulting therefrom, on the Federal lands, the Authorized Officer may take such measures as he deems necessary to control and clean up the discharge and restore the area, including where appropriate, the aquatic environment and fish and wildlife habitats, at the full expense of the holder. Such action by the Authorized Officer shall not relieve holder of any responsibility as provided herein.

5. All construction and maintenance activity will be confined to the authorized right-of-way.

6. The pipeline will be buried with a minimum cover of 36 inches between the top of the pipe and ground level.

7. The maximum allowable disturbance for construction in this right-of-way will be 30 feet:

- Blading of vegetation within the right-of-way will be allowed: maximum width of blading operations will not exceed 20 feet. The trench is included in this area. (*Blading is defined as the complete removal of brush and ground vegetation.*)
- Clearing of brush species within the right-of-way will be allowed: maximum width of clearing operations will not exceed 30 feet. The trench and bladed area are included in this area. (*Clearing is defined as the removal of brush while leaving ground vegetation (grasses, weeds, etc.) intact. Clearing is best accomplished by holding the blade 4 to 6 inches above the ground surface.*)
- The remaining area of the right-of-way (if any) shall only be disturbed by compressing the vegetation. (*Compressing can be caused by vehicle tires, placement of equipment, etc.*)

8. The holder shall stockpile an adequate amount of topsoil where blading is allowed. The topsoil to be stripped is approximately 6 inches in depth. The topsoil will be segregated from other spoil piles from trench construction. The topsoil will be evenly distributed over the bladed area for the preparation of seeding.

9. The holder shall minimize disturbance to existing fences and other improvements on public lands. The holder is required to promptly repair improvements to at least their former state. Functional use of these improvements will be maintained at all times. The holder will contact the owner of any improvements prior to disturbing them. When necessary to pass through a fence line, the fence shall be braced on both sides of the passageway prior to cutting of the fence. No permanent gates will be allowed unless approved by the Authorized Officer.

10. Vegetation, soil, and rocks left as a result of construction or maintenance activity will be randomly scattered on this right-of-way and will not be left in rows, piles, or berms, unless otherwise approved by the Authorized Officer. The entire right-of-way shall be recontoured to match the surrounding landscape. The backfilled soil shall be compacted and a 6 inch berm will be left over the ditch line to allow for settling back to grade.

11. In those areas where erosion control structures are required to stabilize soil conditions, the holder will install such structures as are suitable for the specific soil conditions being encountered and which are in accordance with sound resource management practices.

12. The holder will reseed all disturbed areas. Seeding will be done according to the attached seeding requirements, using the following seed mix.

- | | |
|----------------------------------------------------|--------------------------------------------------|
| <input type="checkbox"/> seed mixture 1 | <input type="checkbox"/> seed mixture 3 |
| <input checked="" type="checkbox"/> seed mixture 2 | <input type="checkbox"/> seed mixture 4 |
| <input type="checkbox"/> seed mixture 2/LPC | <input type="checkbox"/> Aplomado Falcon Mixture |

13. All above-ground structures not subject to safety requirements shall be painted by the holder to blend with the natural color of the landscape. The paint used shall be color which simulates "Standard Environmental Colors" – **Shale Green**, Munsell Soil Color No. 5Y 4/2.

14. The pipeline will be identified by signs at the point of origin and completion of the right-of-way and at all road crossings. At a minimum, signs will state the holder's name, BLM serial number, and the product being transported. All signs and information thereon will be posted in a permanent, conspicuous manner, and will be maintained in a legible condition for the life of the pipeline.

15. The holder shall not use the pipeline route as a road for purposes other than routine maintenance as determined necessary by the Authorized Officer in consultation with the holder before maintenance begins. The holder will take whatever steps are necessary to ensure that the pipeline route is not used as a roadway. As determined necessary during the life of the pipeline, the Authorized Officer may ask the holder to construct temporary deterrence structures.

16. Any cultural and/or paleontological resources (historic or prehistoric site or object) discovered by the holder, or any person working on his behalf, on public or Federal land shall be immediately reported to the Authorized Officer. Holder shall suspend all operations in the immediate area of such discovery until written authorization to proceed is issued by the Authorized Officer. An evaluation of the discovery will be made by the Authorized Officer to determine appropriate actions to prevent the loss of significant cultural or scientific values. The holder will be responsible for the cost of evaluation and any decision as to proper mitigation measures will be made by the Authorized Officer after consulting with the holder.

17. The operator shall be held responsible if noxious weeds become established within the areas of operations. Weed control shall be required on the disturbed land where noxious weeds exist, which includes associated roads, pipeline corridor and adjacent land affected by the establishment of weeds due to this action. The operator shall consult with the Authorized Officer for acceptable weed control methods, which include following EPA and BLM requirements and policies.

18. Escape Ramps - The operator will construct and maintain pipeline/utility trenches that are not otherwise fenced, screened, or netted to prevent livestock, wildlife, and humans from becoming entrapped. At a minimum, the operator will construct and maintain escape ramps, ladders, or other methods of avian and terrestrial wildlife escape in the trenches according to the following criteria:

- a. Any trench left open for eight (8) hours or less is not required to have escape ramps; however, before the trench is backfilled, the contractor/operator shall inspect the trench for wildlife, remove all trapped wildlife, and release them at least 100 yards from the trench.
- b. For trenches left open for eight (8) hours or more, earthen escape ramps (built at no more than a 30 degree slope and spaced no more than 500 feet apart) shall be placed in the trench.

19. Special Stipulations:

C. ELECTRIC LINES

STANDARD STIPULATIONS FOR OVERHEAD ELECTRIC DISTRIBUTION LINES

A copy of the grant and attachments, including stipulations, survey plat and/or map, will be on location during construction. BLM personnel may request to you a copy of your permit during construction to ensure compliance with all stipulations.

Holder agrees to comply with the following stipulations to the satisfaction of the Authorized Officer:

1. The holder shall indemnify the United States against any liability for damage to life or property arising from the occupancy or use of public lands under this grant.

2. The holder shall comply with all applicable Federal laws and regulations existing or hereafter enacted or promulgated. In any event, the holder shall comply with the Toxic Substances Control Act of 1976 as amended, 15 USC 2601 et seq. (1982) with regards to any toxic substances that are used, generated by or stored on the right-of-way or on facilities authorized under this right-of-way grant. (See 40 CFR, Part 702-799 and especially, provisions on polychlorinated biphenyls, 40 CFR 761.1-761.193.) Additionally, any release of toxic substances (leaks, spills, etc.) in excess of the reportable quantity established by 40 CFR, Part 117 shall be reported as required by the Comprehensive Environmental Response, Compensation, and Liability Act, section 102b. A copy of any report required or requested by any Federal agency or State government as

a result of a reportable release or spill of any toxic substances shall be furnished to the authorized officer concurrent with the filing of the reports to the involved Federal agency or State government.

3. The holder agrees to indemnify the United States against any liability arising from the release of any hazardous substance or hazardous waste (as these terms are defined in the Comprehensive Environmental Response, Compensation and Liability Act of 1980, 42 U.S.C. 9601, et seq. or the Resource Conservation and Recovery Act, 42 U.S.C. 6901, et seq.) on the Right-of-Way (unless the release or threatened release is wholly unrelated to the Right-of-Way holder's activity on the Right-of-Way), or resulting from the activity of the Right-of-Way holder on the Right-of-Way. This agreement applies without regard to whether a release is caused by the holder, its agent, or unrelated third parties.

4. There will be no clearing or blading of the right-of-way unless otherwise agreed to in writing by the Authorized Officer.

5. Power lines shall be constructed and designed in accordance to standards outlined in "Suggested Practices for Avian Protection on Power lines: The State of the Art in 2006" Edison Electric Institute, APLIC, and the California Energy Commission 2006 . The holder shall assume the burden and expense of proving that pole designs not shown in the above publication deter raptor perching, roosting, and nesting. Such proof shall be provided by a raptor expert approved by the Authorized Officer. The BLM reserves the right to require modification or additions to all powerline structures placed on this right-of-way, should they be necessary to ensure the safety of large perching birds. Such modifications and/or additions shall be made by the holder without liability or expense to the United States.

Raptor deterrence will consist of but not limited to the following: triangle perch discouragers shall be placed on each side of the cross arms and a nonconductive perching deterrence shall be placed on all vertical poles that extend past the cross arms.

6. The holder shall minimize disturbance to existing fences and other improvements on public lands. The holder is required to promptly repair improvements to at least their former state. Functional use of these improvements will be maintained at all times. The holder will contact the owner of any improvements prior to disturbing them. When necessary to pass through a fence line, the fence shall be braced on both sides of the passageway prior to cutting the fence. No permanent gates will be allowed unless approved by the Authorized Officer.

7. The BLM serial number assigned to this authorization shall be posted in a permanent, conspicuous manner where the power line crosses roads and at all serviced facilities. Numbers will be at least two inches high and will be affixed to the pole nearest the road crossing and at the facilities served.

8. Upon cancellation, relinquishment, or expiration of this grant, the holder shall comply with those abandonment procedures as prescribed by the Authorized Officer.

9. All surface structures (poles, lines, transformers, etc.) shall be removed within 180 days of abandonment, relinquishment, or termination of use of the serviced facility or facilities or within 180 days of abandonment, relinquishment, cancellation, or expiration of this grant, whichever comes first. This will not apply where the power line extends service to an active, adjoining facility or facilities.

10. Any cultural and/or paleontological resource (historic or prehistoric site or object) discovered by the holder, or any person working on his behalf, on public or Federal land shall be immediately reported to the Authorized Officer. Holder shall suspend all operations in the immediate area of such discovery until written authorization to proceed is issued by the Authorized Officer. An evaluation of the discovery will be made by the Authorized Officer to determine appropriate actions to prevent the loss of significant cultural or scientific values. The holder will be responsible for the cost of evaluation and any decision as to proper mitigation measures will be made by the Authorized Officer after consulting with the holder.

11. Special Stipulations:

- The BLM, Carlsbad Field Office, will be informed immediately if any subsurface drainage channels, cave passages, or voids are penetrated during construction and no further construction will be done until clearance has been issued by the Authorized Officer. Special restoration stipulations or realignment may be required.
- For reclamation remove poles, lines, transformer, etc. and dispose of properly.
- Fill in any holes with native soil.
- To protect visual resources:
 - a. New construction will be contained within existing rights-of ways as much as possible
 - b. Vegetation will not be removed except to locate poles (no blading)
 - c. Large rocks removed while locating poles will be randomly distributed in a natural manner across the landscape and not be piled to attract attention
 - d. Surface disturbance in drainages shall be avoided
 - e. Pole height shall not exceed 40 feet above ground

IX. INTERIM RECLAMATION

During the life of the development, all disturbed areas not needed for active support of production operations should undergo interim reclamation in order to minimize the environmental impacts of development on other resources and uses.

Within six (6) months of well completion, operators should work with BLM surface management specialists (Jim Amos: 575-234-5909) to devise the best strategies to reduce

the size of the location. Interim reclamation should allow for remedial well operations, as well as safe and efficient removal of oil and gas.

During reclamation, the removal of caliche is important to increasing the success of revegetating the site. Removed caliche that is free of contaminants may be used for road repairs, fire walls or for building other roads and locations. In order to operate the well or complete workover operations, it may be necessary to drive, park and operate on restored interim vegetation within the previously disturbed area. Disturbing revegetated areas for production or workover operations will be allowed. If there is significant disturbance and loss of vegetation, the area will need to be revegetated. Communicate with the appropriate BLM office for any exceptions/exemptions if needed.

All disturbed areas after they have been satisfactorily prepared need to be reseeded with the seed mixture provided below.

Upon completion of interim reclamation, the operator shall submit a Sundry Notices and Reports on Wells, Subsequent Report of Reclamation (Form 3160-5).

X. FINAL ABANDONMENT & RECLAMATION

At final abandonment, well locations, production facilities, and access roads must undergo "final" reclamation so that the character and productivity of the land are restored.

Earthwork for final reclamation must be completed within six (6) months of well plugging. All pads, pits, facility locations and roads must be reclaimed to a satisfactory revegetated, safe, and stable condition, unless an agreement is made with the landowner or BLM to keep the road and/or pad intact.

After all disturbed areas have been satisfactorily prepared, these areas need to be revegetated with the seed mixture provided below. Seeding should be accomplished by drilling on the contour whenever practical or by other approved methods. Seeding may need to be repeated until revegetation is successful, as determined by the BLM.

Operators shall contact a BLM surface protection specialist prior to surface abandonment operations for site specific objectives (Jim Amos: 575-234-5909).

Seed Mixture 2, for Sandy Sites

The holder shall seed all disturbed areas with the seed mixture listed below. The seed mixture shall be planted in the amounts specified in pounds of pure live seed (PLS)* per acre. There shall be no primary or secondary noxious weeds in the seed mixture. Seed will be tested and the viability testing of seed will be done in accordance with State law (s) and within nine (9) months prior to purchase. Commercial seed will be either certified or registered seed. The seed container will be tagged in accordance with State law(s) and available for inspection by the authorized officer.

Seed will be planted using a drill equipped with a depth regulator to ensure proper depth of planting where drilling is possible. The seed mixture will be evenly and uniformly planted over the disturbed area (smaller/heavier seeds have a tendency to drop the bottom of the drill and are planted first). The holder shall take appropriate measures to ensure this does not occur. Where drilling is not possible, seed will be broadcast and the area shall be raked or chained to cover the seed. When broadcasting the seed, the pounds per acre are to be doubled. The seeding will be repeated until a satisfactory stand is established as determined by the authorized officer. Evaluation of growth will not be made before completion of at least one full growing season after seeding.

Species to be planted in pounds of pure live seed* per acre:

<u>Species</u>	<u>lb/acre</u>
Sand dropseed (<i>Sporobolus cryptandrus</i>)	1.0
Sand love grass (<i>Eragrostis trichodes</i>)	1.0
Plains bristlegrass (<i>Setaria macrostachya</i>)	2.0

*Pounds of pure live seed:

Pounds of seed x percent purity x percent germination = pounds pure live seed