

**District I**  
1625 N. French Dr., Hobbs, NM 88240  
Phone: (575) 393-6161 Fax: (575) 393-0720

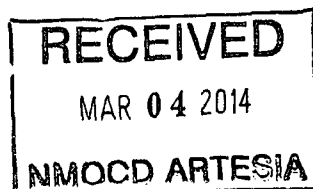
**District II**  
811 S. First St., Artesia, NM 88210  
Phone: (575) 748-1283 Fax: (575) 748-9720

**District III**  
1000 Rio Brazos Road, Aztec, NM 87410  
Phone: (505) 334-6178 Fax: (505) 334-6170

**District IV**  
1220 S. St. Francis Dr., Santa Fe, NM 87505  
Phone: (505) 476-3460 Fax: (505) 476-3462

**State of New Mexico**  
**Energy Minerals and Natural Resources**  
**Oil Conservation Division**  
**1220 South St. Francis Dr.**  
**Santa Fe, NM 87505**

Form C-101  
Revised July 18, 2013



**APPLICATION FOR PERMIT TO DRILL, RE-ENTER, DEEPEN, PLUGBACK, OR ADD A ZONE**

<sup>1</sup> Operator Name and Address <b>COG Operating LLC</b> <b>2208 West Main Street</b> <b>Artesia, NM 88210</b>		<sup>2</sup> OGRID Number <b>229137</b> <sup>3</sup> APP Number <b>30-015-42130</b>
<sup>4</sup> Property Code <b>40112</b>	<sup>5</sup> Property Name <b>SRO State Com</b>	<sup>6</sup> Well No <b>64H</b>

**<sup>7</sup> Surface Location**

UL - Lot	Section	Township	Range	Lot Idn	Feet from	N/S Line	Feet From	E/W Line	County
E	10	26S	28E		2450	North	710	West	Eddy

**<sup>8</sup> Proposed Bottom Hole Location**

UL - Lot	Section	Township	Range	Lot Idn	Feet from	N/S Line	Feet From	E/W Line	County
M	15	26S	28E		330	South	760	West	Eddy

**<sup>9</sup> Pool Information**

<sup>9a</sup> Pool Name <i>Hay Hollow</i> <b>Red Bluff Bone Spring, South</b>	<sup>9b</sup> Pool Code <b>51010</b>
---	---

**Additional Well Information**

<sup>11</sup> Work Type <b>New Well</b>	<sup>12</sup> Well Type <b>Oil</b>	<sup>13</sup> Cable/Rotary 	<sup>14</sup> Lease Type <b>State</b>	<sup>15</sup> Ground Level Elevation <b>3011.6'</b>
<sup>11a</sup> Multiple <b>N</b>	<sup>12a</sup> Proposed Depth <b>16896'</b>	<sup>13a</sup> Formation <b>Bone Spring</b>	<sup>14a</sup> Contractor 	<sup>15a</sup> Spud Date <b>3/15/2014</b>
<sup>16</sup> Depth to Ground water 		<sup>17</sup> Distance from nearest fresh water well 		<sup>18</sup> Distance to nearest surface water 

☒ We will be using a closed-loop system in lieu of lined pits

**<sup>21</sup> Proposed Casing and Cement Program**

Type	Hole Size	Casing Size	Casing Weight/ft	Setting Depth	Sacks of Cement	Estimated TOC
Surface	17.5"	13.375	48	400'	375	
Intmid	12.25"	9.625	36	2510'	850	
Production	8.75"	5.5	17	16896'	3265	2210

**Casing/Cement Program: Additional Comments**

Drill 17-1/2" hole to ~400' w/ fresh water spud mud. Run 13-3/8" 48# H40 STC casing to TD and cement to surface in one stage. Will use 1" tubing and Class C w/ 2% CaCl<sub>2</sub> to cement to surface, if necessary.

Drill 12-1/4" hole to ~2510' with saturated brine water. Run 9-5/8" 36# J55 LTC casing to TD and cement to surface in one stage.

Drill 8-3/4" vertical hole, curve and lateral to 16896' with cut brine. Run 5-1/2" 17# P110 Tenaris TXP BTC casing to TD and cement in one stage bringing TOC to 2210' (300' overlap).

**<sup>22</sup> Proposed Blowout Prevention Program**

Type	Working Pressure	Test Pressure	Manufacturer
Double Ram	3000	3000	Cameron

<sup>23</sup> I hereby certify that the information given above is true and complete to the best of my knowledge and belief. I further certify that I have complied with 19.15.14.9 (A) NMAC <input checked="" type="checkbox"/> and/or 19.15.14.9 (B) NMAC <input checked="" type="checkbox"/> , if applicable. Signature: <i>Mayte Reyes</i> Printed name: <b>Mayte Reyes</b> Title: <b>Regulatory Analyst</b> E-mail Address: <b>mreyes1@concho.com</b> Date: <b>3/4/2013</b>	<div style="text-align: center;"><b>OIL CONSERVATION DIVISION</b></div> Approved By: <i>T. C. Shepard</i> Title: <b>"Geologist"</b> Approved Date: <b>3-4-2014</b>   Expiration Date: <b>3-4-2016</b> Conditions of Approval Attached
Phone: <b>575-748-6945</b>	

DISTRICT I  
1625 N. FRENCH DR., HOBBES, NM 86240  
Phone: (875) 383-6161 Fax: (875) 383-0720

DISTRICT II  
811 S. FIRST ST., ARTESIA, NM 86210  
Phone: (505) 746-1283 Fax: (505) 746-8720

DISTRICT III  
1000 RIO BRAZOS RD., AZTEC, NM 87410  
Phone: (505) 334-6178 Fax: (505) 334-6170

DISTRICT IV  
1220 S. ST. FRANCIS DR., SANTA FE, NM 87505  
Phone: (505) 476-3460 Fax: (505) 476-3462

State of New Mexico  
Energy, Minerals & Natural Resources Department  
**OIL CONSERVATION DIVISION**  
1220 SOUTH ST. FRANCIS DR.  
Santa Fe, New Mexico 87505

Form C-102  
Revised August 1, 2011  
Submit one copy to appropriate  
District Office

☐ AMENDED REPORT

**WELL LOCATION AND ACREAGE DEDICATION PLAT**

API Number 30-015- <b>42130</b>	Pool Code <b>51010</b>	Pool Name <b>Red Bluff; Bone Spring, South</b>
Property Code 40112	Property Name <b>SRO STATE COM</b>	Well Number 64H
GRID No. 229137	Operator Name <b>COG OPERATING, LLC</b>	Elevation 3011.6

**Surface Location**

UL or lot No.	Section	Township	Range	Lot Idn	Feet from the	North/South line	Feet from the	East/West line	County
E	10	26-S	28-E		2450	NORTH	710	WEST	EDDY

**Bottom Hole Location If Different From Surface**

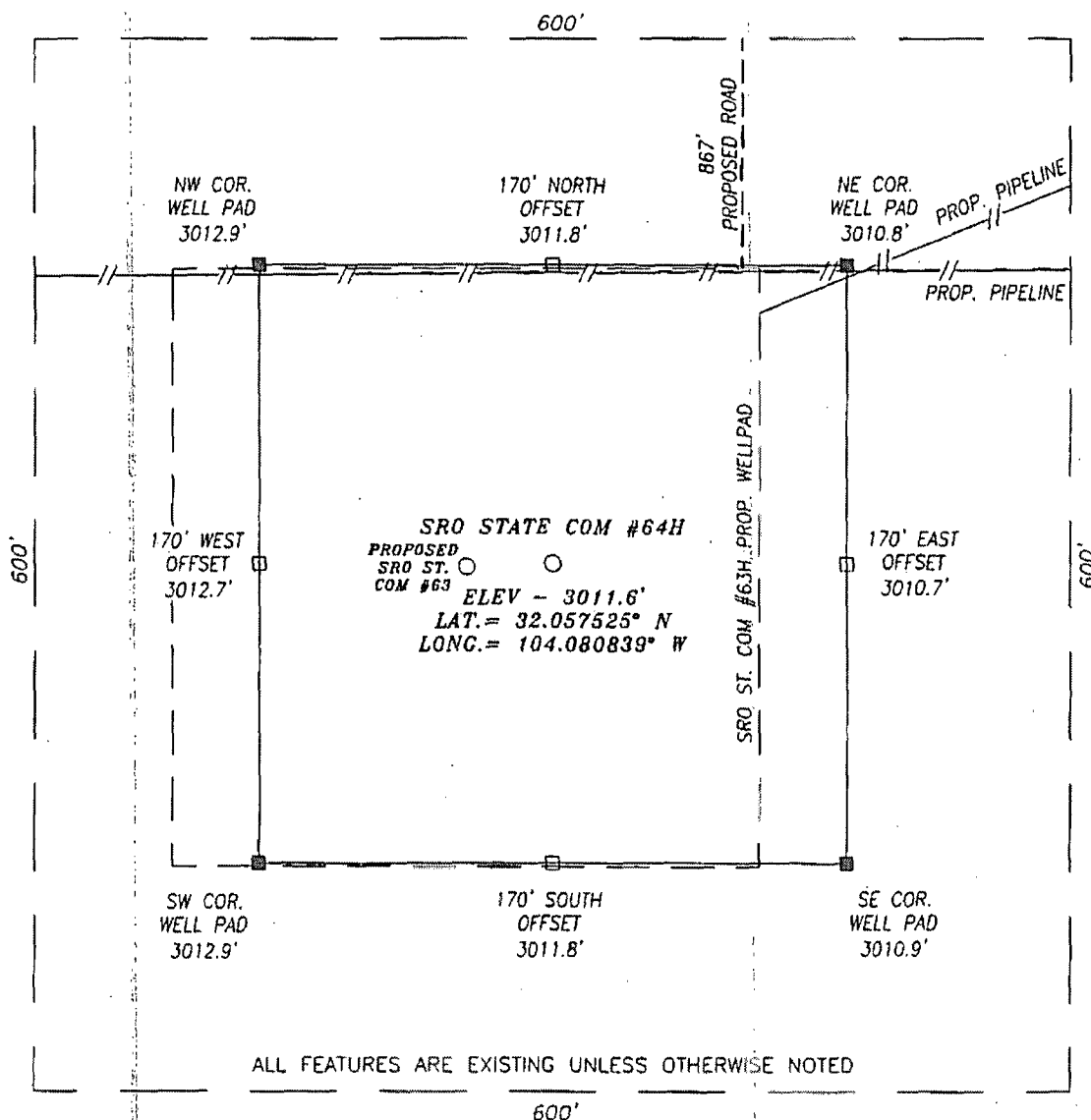
UL or lot No.	Section	Township	Range	Lot Idn	Feet from the	North/South line	Feet from the	East/West line	County
M	15	26-S	28-E		330	SOUTH	760	WEST	EDDY

Dedicated Acres	Joint or Infill	Consolidation Code	Order No.
240			

NO ALLOWABLE WILL BE ASSIGNED TO THIS COMPLETION UNTIL ALL INTERESTS HAVE BEEN CONSOLIDATED  
OR A NON-STANDARD UNIT HAS BEEN APPROVED BY THE DIVISION

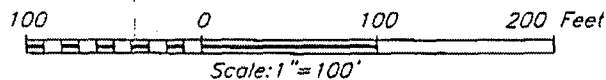
	<p>NAD 27 <u>SURFACE LOCATION</u> Y=384744.0 N X=578223.1 E LAT.=32.057525° N LONG.=104.080839° W</p> <p>NAD 27 <u>PROPOSED BOTTOM HOLE LOCATION</u> Y=376895.8 N X=578363.4 E LAT.=32.035949° N LONG.=104.080446° W</p>	<p><b>OPERATOR CERTIFICATION</b> I hereby certify that the information herein is true and complete to the best of my knowledge and belief, and that this organization either owns a working interest or unleased mineral interest in the land including the proposed bottom hole location or has a right to drill this well at this location pursuant to a contract with an owner of such mineral or working interest, or to a voluntary pooling agreement or a compulsory pooling order heretofore entered by the division.</p> <p>Signature <u>Melanie Parker</u> Date <u>3/4/14</u> Printed Name <u>Melanie J. Parker</u> E-mail Address <u>mparker@concho.com</u></p> <p><b>SURVEYOR CERTIFICATION</b> I hereby certify that the well location shown on this plat was plotted from field notes of actual surveys made by me or under my supervision, and that the same is true and correct to the best of my belief.</p> <p>FEBRUARY 18, 2014 Date of Survey</p> <p>Signature &amp; Seal of Professional Surveyor  Certificate No. <u>CHAD HARCROW</u> 17777 W.O. # 14-113 DRAWN BY: SP</p>
--	--	---

SECTION 10, TOWNSHIP 26 SOUTH, RANGE 28 EAST, N.M.P.M.,  
EDDY COUNTY NEW MEXICO



DIRECTIONS TO LOCATION

HEADING SOUTH ON HWY 285 TURN RIGHT (WEST) ONTO CR #724 (WHITE CITY RD) AND GO APPROX. 0.9 MILE, THEN TURN LEFT (SOUTHEAST) AND GO APPROX. 0.1 MILE; THEN PROPOSED WELL IS APPROX. 1040 FEET SOUTH.



HARCROW SURVEYING, LLC

2314 W. MAIN ST, ARTESIA, N.M. 88210  
PH: (575) 513-2570 FAX: (575) 746-2158  
chad\_harcrow77@yahoo.com



COG OPERATING, LLC

SRO ST. COM #64H WELL  
LOCATED 2450 FEET FROM THE NORTH LINE  
AND 710 FEET FROM THE WEST LINE OF SECTION 10,  
TOWNSHIP 26 SOUTH, RANGE 28 EAST, N.M.P.M.,  
EDDY COUNTY, NEW MEXICO

SURVEY DATE: 02/18/2014

PAGE: 1 OF 1

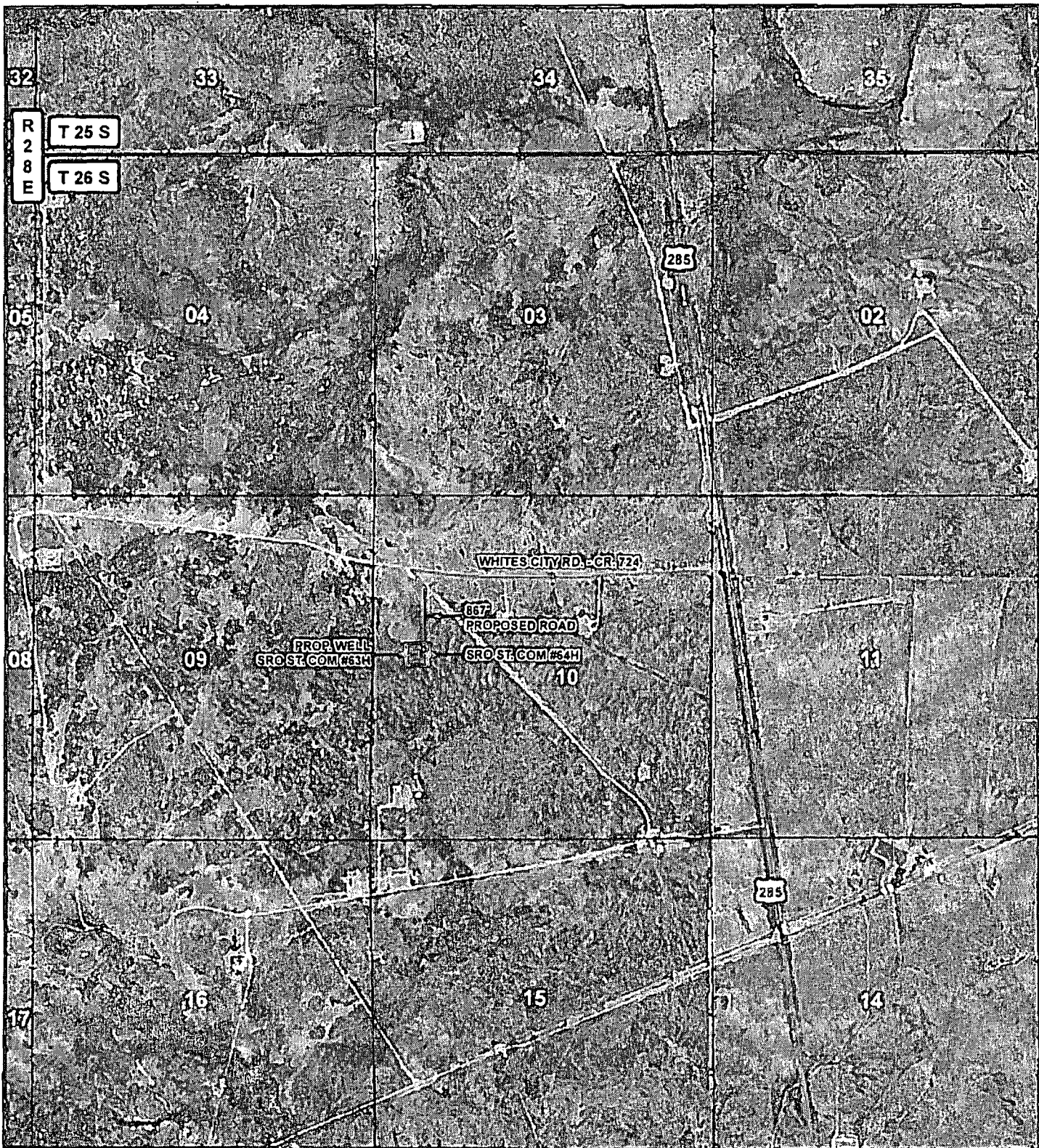
DRAFTING DATE: 02/19/2014

APPROVED BY: CH

DRAWN BY: SP

FILE: 14-113





# LEGEND

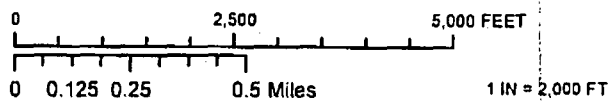
- WELL
- WELLPAD
- EXISTING ROAD
- PROPOSED ROAD

SRO ST. COM #64H

SEC: 10 TWP: 26 S. RGE: 28 E. ELEVATION: 3011.6'

STATE: NEW MEXICO COUNTY: EDDY 2450' FNL & 710' FWL

W.O. # 14-113 LEASE: SRO ST. COM SURVEY: N.M.P.M



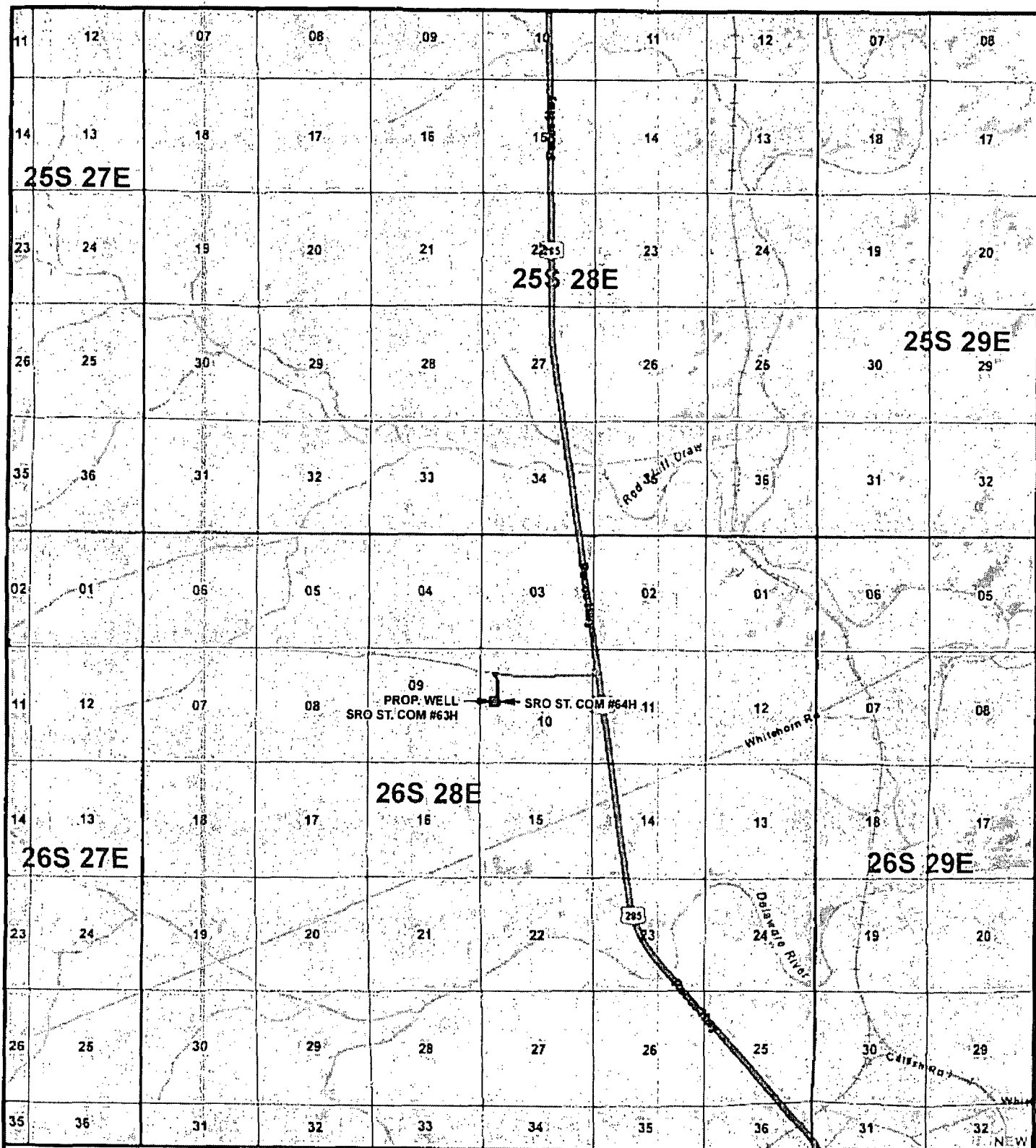
LOCATION MAP IMAGE 02/19/2014

**CONCHO**  
COG OPERATING, LLC

HARCROW SURVEYING, LLC  
1107 WATSON, ARTESIA NM 86210  
PH: (505) 813-2570 FAX: (505) 746-2155  
dud.junior77@yahoo.com







# LEGEND

- WELL
- WELLPAD
- EXISTING ROAD
- PROPOSED ROAD

SRO ST. COM #64H.11

SEC: 10 TWP: 26 S. RGE: 28 E. ELEVATION: 3011.6'

STATE: NEW MEXICO COUNTY: EDDY 2450' FNL & 710' FWL

W.O. # 14-113 LEASE: SRO ST. COM SURVEY: N.M.P.M.

0 2,500 5,000 7,500 10,000 12,500 15,000 FEET

0 0.4 0.8 1.6 Miles

1 IN = 6,000 FT

VICINITY MAP

02/19/2011



**CONCHO**  
COG OPERATING, LLC

HARCROW SURVEYING, LLC  
1107 WATSON, ARTESIA, NM 88210  
PH: (505) 313-2570 FAX: (505) 746-2158  
chad.j.harcrow@yahoo.com

