

Form 3160-3
(March 2012)**UNORTHODOX
LOCATION**

OCD Artesia

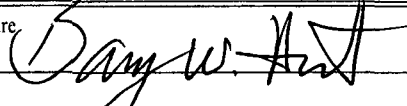

FORM APPROVED
OMB No. 1004-0137
Expires October 31, 2014**HIGH CAVEKARST**UNITED STATES
DEPARTMENT OF THE INTERIOR
BUREAU OF LAND MANAGEMENT**APPLICATION FOR PERMIT TO DRILL OR REENTER**

1a. Type of work: <input checked="" type="checkbox"/> DRILL <input type="checkbox"/> REENTER		5. Lease Serial No. NM-054290	
1b. Type of Well: <input checked="" type="checkbox"/> Oil Well <input type="checkbox"/> Gas Well <input type="checkbox"/> Other <input checked="" type="checkbox"/> Single Zone <input type="checkbox"/> Multiple Zone		6. If Indian, Allottee or Tribe Name	
2. Name of Operator RKI EXPLORATION & PRODUCTION, LLC.		7. If Unit or CA Agreement, Name and No.	
3a. Address 210 PARK AVENUE, SUITE 900 OKLAHOMA CITY, OKLAHOMA 73102		8. Lease Name and Well No. North Brushy Draw Federal 35-9H 313114	
3b. Phone No. (include area code) 405-987-2138 (JOEL ACOSTA)		9. API Well No. 30-015-42220	
4. Location of Well (Report location clearly and in accordance with any State requirements*) At surface 300 FNL & 260 FEL At proposed prod. zone 230 FSL & 350 FEL		10. Field and Pool, or Exploratory Corral Canyon; Bone Spring, South <133547	
11. Sec., T. R. M. or Bk. and Survey of Area SECTION 35, T. 25 S., R. 29 E.		12. County or Parish EDDY	
13. State NM		14. Distance in miles and direction from nearest town or post office* 14 MILES SOUTHEAST OF MALAGA, NM	
15. Distance from proposed* location to nearest property or lease line, ft. (Also to nearest drig. unit line, if any) SHL: 260' BHL: 230'	16. No. of acres in lease 480	17. Spacing Unit dedicated to this well 160	
18. Distance from proposed location* to nearest well, drilling, completed, applied for, on this lease, ft. SHL: 25' BHL: 195'	19. Proposed Depth TVD: 8970' MD: 13,545'	20. BLM/BIA Bond No. on file NLM-NMB-000460	
21. Elevations (Show whether DF, KDB, RT, GL, etc.) 3032' GL	22. Approximate date work will start* ASAP	23. Estimated duration 25 DAYS	

24. Attachments

The following, completed in accordance with the requirements of Onshore Oil and Gas Order No. 1, must be attached to this form:

- | | |
|--|---|
| 1. Well plat certified by a registered surveyor. | 4. Bond to cover the operations unless covered by an existing bond on file (see Item 20 above). |
| 2. A Drilling Plan. | 5. Operator certification |
| 3. A Surface Use Plan (if the location is on National Forest System Lands, the SUPO must be filed with the appropriate Forest Service Office). | 6. Such other site specific information and/or plans as may be required by the BLM. |

25. Signature 	Name (Printed/Typed) BARRY W. HUNT	Date 2/13/14
Title PERMIT AGENT FOR RKI EXPLORATION & PRODUCTION, LLC.		
Approved by (Signature) 	Name (Printed/Typed) /S/ STEPHEN J. CAFFEY	Date MAR 13 2014
Title FIELD MANAGER	Office CARLSBAD FIELD OFFICE	

Application approval does not warrant or certify that the applicant holds legal or equitable title to those rights in the subject lease which would entitle the applicant to conduct operations thereon.

Conditions of approval, if any, are attached.

APPROVAL FOR TWO YEARS

Title 18 U.S.C. Section 1001 and Title 43 U.S.C. Section 1212, make it a crime for any person knowingly and willfully to make to any department or agency of the United States any false, fictitious or fraudulent statements or representations as to any matter within its jurisdiction.

(Continued on page 2)

RECEIVED

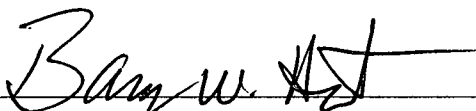
MAR 19 2014

NMOCD ARTESIACarlsbad Controlled Water Basin ^(Instructions on page 2)**SEE ATTACHED FOR
CONDITIONS OF APPROVAL**Approval Subject to General Requirements
& Special Stipulations AttachedMust be in compliance with NMOCD
Rule 5.9 prior to transporting/selling
product.

CERTIFICATION

I hereby certify that I, or persons under my direct supervision, have inspected the proposed drill site and access road proposed herein; that I am familiar with the conditions that presently exist; that I have full knowledge of State and Federal laws applicable to this operation; that the statements made in this APD package are, to the best of my knowledge, true and correct, and that the work associated with the operations proposed herein will be performed in conformity with this APD package and the terms and conditions under which it is approved. I also certify that I, or RKI Exploration and Production, LLC am responsible for the operations conducted under this application. These statements are subject to the provisions of 18 U. S. C. 1001 for the filing of false statements. Executed this 3rd. day of February 2014.

Signed: _____



Printed Name: Barry Hunt

Position: Agent for RKI Exploration & Production, LLC.

Address: 1403 Springs Farm Place, Carlsbad, NM 88220

Telephone: (575) 361-4078

E-mail: specialtpermitting@gmail.com

DISTRICT I
1625 N. French Dr., Hobbs, NM 88240
Phone: (575) 393-6161 Fax: (575) 393-0720

DISTRICT II
811 S. First St., Artesia, NM 88210
Phone: (575) 748-1283 Fax: (575) 748-9720

DISTRICT III
1000 Rio Pecos Rd., Artesia, NM 87410
Phone: (505) 334-6178 Fax: (505) 334-6170

DISTRICT IV
1220 S. St. Francis Dr., Santa Fe, NM 87505
Phone: (505) 476-3460 Fax: (505) 476-3462

State of New Mexico
Energy, Minerals & Natural Resources Department
OIL CONSERVATION DIVISION
1220 South St. Francis Dr.
Santa Fe, New Mexico 87505

Form C-102
Revised August 1, 2011
Submit one copy to appropriate
District Office
☐ AMENDED REPORT

WELL LOCATION AND ACREAGE DEDICATION PLAT

API Number 30-015-42220	Pool Code 13354	Pool Name CORRAL CANYON; BONE SPRING, SOUTH
Property Code 313114	Property Name NORTH BRUSHY DRAW FEDERAL 35	Well Number 9H
OGRID No. 246289	Operator Name RKI EXPLORATION & PRODUCTION	Elevation 3032'

Surface Location

UL or lot no.	Section	Township	Range	Lot Idn	Feet from the	North/South line	Feet from the	East/West line	County
A	35	25 S	29 E		300	NORTH	260	EAST	EDDY

Bottom Hole Location If Different From Surface

UL or lot no.	Section	Township	Range	Lot Idn	Feet from the	North/South line	Feet from the	East/West line	County
P	35	25 S	29 E		230	SOUTH	350	EAST	EDDY
Dedicated Acres 160	Joint or Infill	Consolidated Code	Order No.	3-13					

No allowable will be assigned to this completion until all interests have been consolidated or a non-standard unit has been approved by the division.

<p>NW COR SEC 35 NMSP-E (NAD 83) N (Y) = 397973.5 E (X) = 655831.6 LAT. = 32°05'36.84" N LONG. = 103°57'49.00" W</p>	<p>NORTH BRUSHY DRAW FEDERAL 35 9H SHL NMSP-E (NAD 83) N (Y) = 397687.6 E (X) = 660881.9 LAT. = 32°05'33.84" N LONG. = 103°56'50.29" W</p> <p>NMSP-E (NAD 27) N (Y) = 397629.6 E (X) = 619696.7 LAT. = 32.0926101°N LONG. = 103.9468205°W</p>	<p>FIRST TAKE 330' FNL 350' FEL</p> <p>NE COR SEC 35 NMSP-E (NAD 83) N (Y) = 397988.3 E (X) = 661140.7 LAT. = 32°05'36.81" N LONG. = 103°56'47.27" W</p>	<p>300'</p> <p>260'</p>
<p>SW COR SEC 35 NMSP-E (NAD 83) N (Y) = 392663.4 E (X) = 655847.1 LAT. = 32°04'44.30" N LONG. = 103°57'49.02" W</p>	<p>NORTH BRUSHY DRAW FEDERAL 35 9H BHL NMSP-E (NAD 83) N (Y) = 392909.6 E (X) = 660813.3 LAT. = 32°04'46.56" N LONG. = 103°56'51.29" W</p> <p>NMSP-E (NAD 27) N (Y) = 392851.7 E (X) = 619627.9 LAT. = 32.0794764°N LONG. = 103.9470980°W</p>	<p>SE COR SEC 35 NMSP-E (NAD 83) N (Y) = 392680.8 E (X) = 661164.4 LAT. = 32°04'44.28" N LONG. = 103°56'47.21" W</p> <p>LAST TAKE 330' FSL 545' FEL</p>	<p>350'</p> <p>230'</p>

OPERATOR CERTIFICATION

I hereby certify that the information contained herein is true and complete to the best of my knowledge and belief, and that this organization either owns a working interest or unleased mineral interest in the land including the proposed bottom hole location or has a right to drill this well at this location pursuant to a contract with an owner of such a mineral or working interest, or to voluntary pooling agreement or a compulsory pooling order heretofore entered by the division.

Signature: Barry W. Hunt Date: 2/3/14

Print Name: Barry W. Hunt

E-mail Address: _____

SURVEYORS CERTIFICATION

I hereby certify that the well location shown on this plat was plotted from field notes of actual surveys made by me or under my supervision, and that the same is true and correct to the best of my belief.

Date of Survey: December 29, 2013

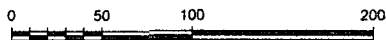
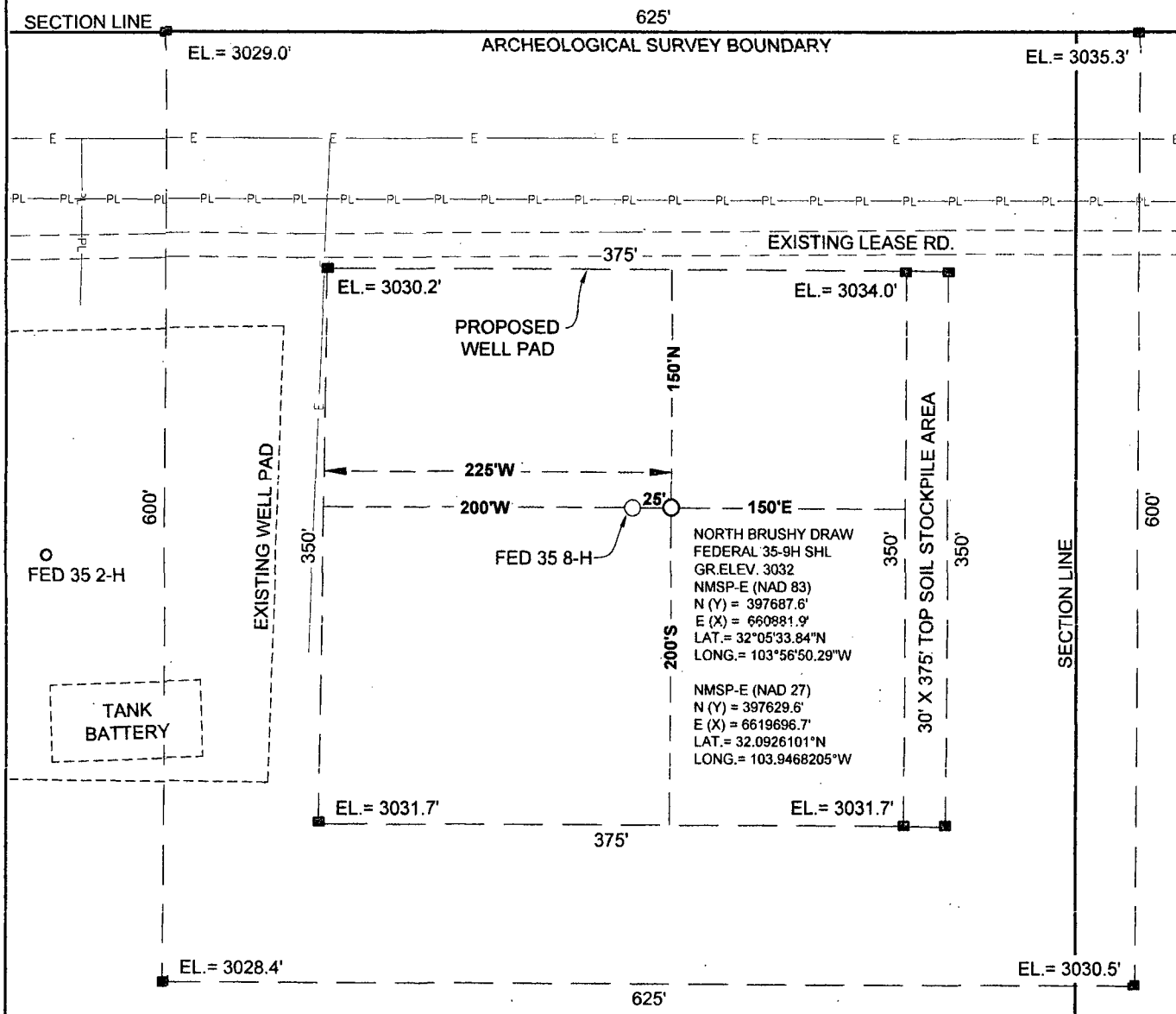
Signature and Seal of Professional Surveyor: James E. Tompkins

Job No.: WTC49483

JAMES E. TOMPKINS 14729

Certificate Number: _____

SITE LOCATION



GRAPHIC SCALE 1" = 100'

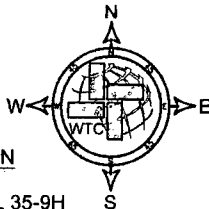
SECTION 35, T 25 S, R 29 E, N.M.P.M.

COUNTY: EDDY STATE: NM

DESCRIPTION: 300' FNL & 260' FEL

OPERATOR: RKI EXPLORATION & PRODUCTION

WELL NAME: NORTH BRUSHY DRAW FEDERAL 35-9H



DRIVING DIRECTIONS:

From the intersection of 285 and Longhorn County Road 725 go on 725 for 4.3 miles to a Lease Road. Go Northeast 3.7 miles to another Lease Road. Go South 0.2 mile to the Fed 35 1H Well location. Turn left and go East 0.3 mile to a point 208' North of location.

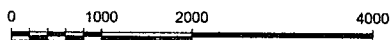
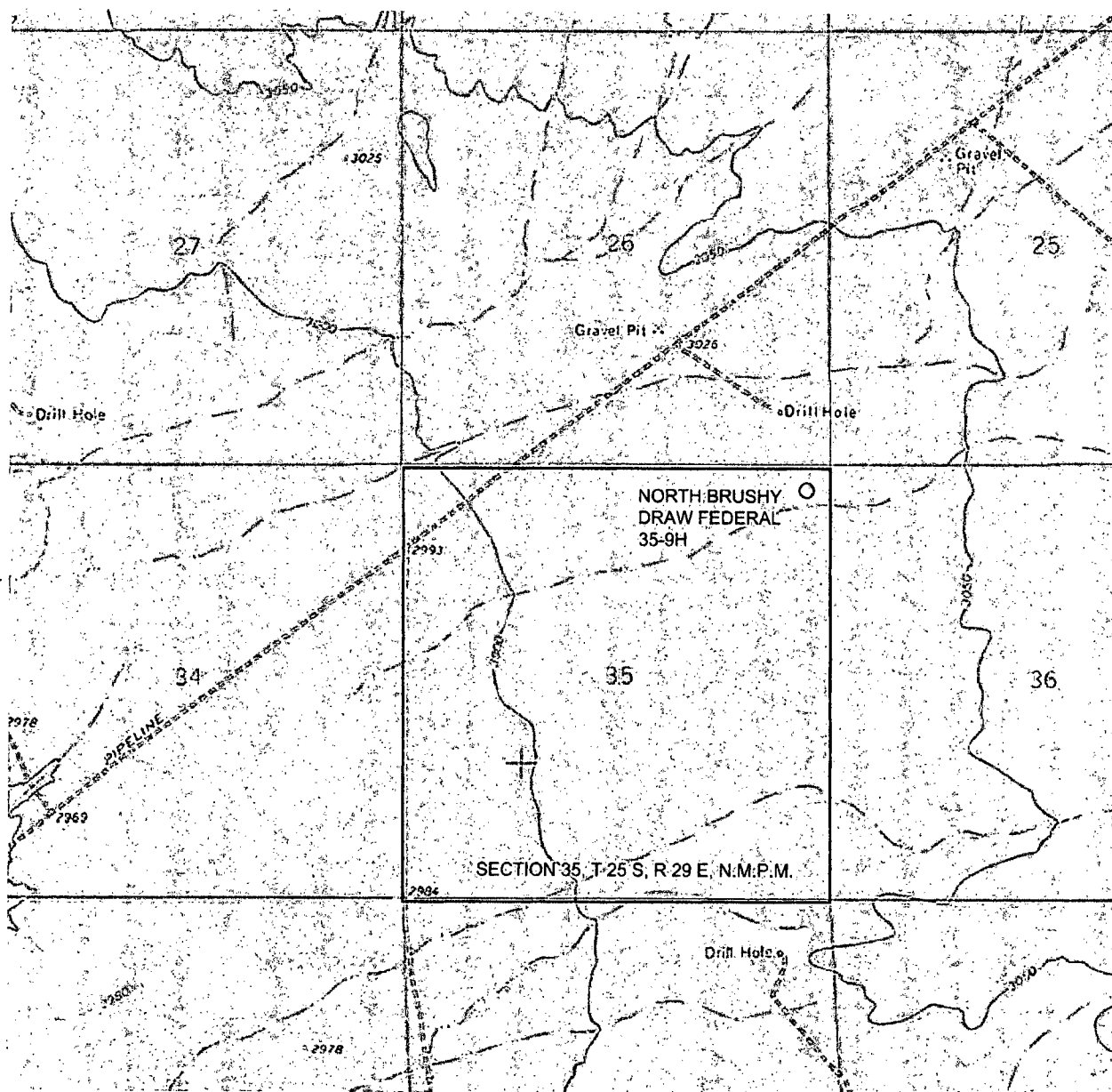


WTC, INC.
405 S.W. 1st STREET
ANDREWS, TEXAS 79714
(432) 523-2181

RKI EXPLORATION & PRODUCTION

JOB No.: WTC49483

LOCATION VERIFICATION MAP



GRAPHIC SCALE 1" = 2000'

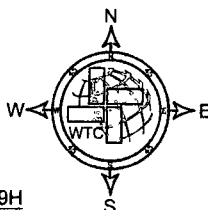
SECTION 35, T 25 S, R 29 E, N.M.P.M.

COUNTY: EDDY STATE: NM

DESCRIPTION: 300' FNL & 260' FEL

OPERATOR: RKI EXPLORATION & PRODUCTION

WELL NAME: NORTH BRUSHY DRAW FEDERAL 35-9H



DRIVING DIRECTIONS:

From the intersection of 285 and Longhorn County Road 725 go on 725 for 4.3 miles to a Lease Road. Go Northeast 3.7 miles to another Lease Road. Go South 0.2 mile to the Fed 35 1H Well location. Turn left and go East 0.3 mile to a point 206' North of location.

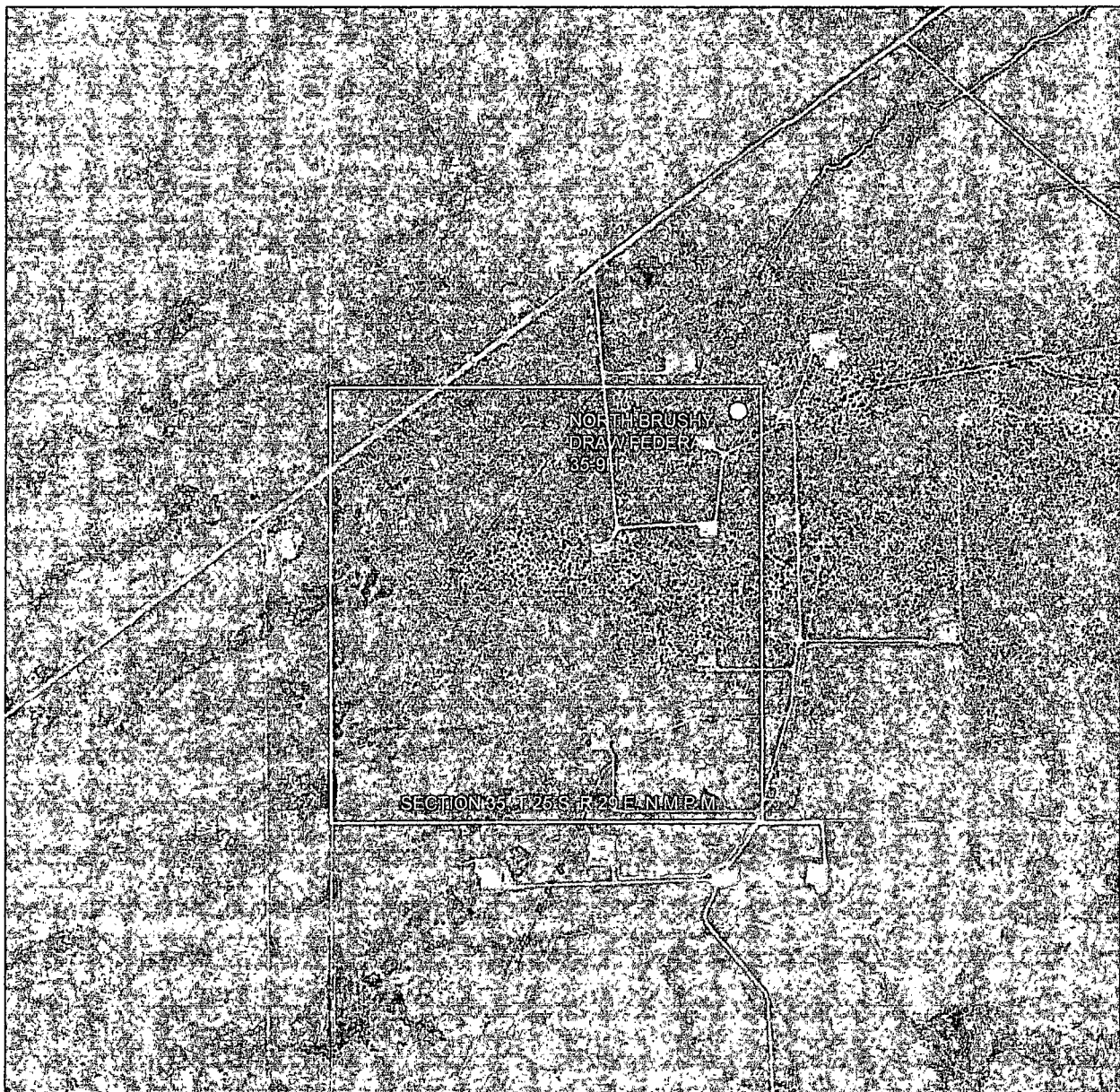


WTC, INC.
405 S.W. 1st STREET
ANDREWS, TEXAS
79714
(432) 523-2181

RKI EXPLORATION & PRODUCTION

JOB No.: WTC49483

AERIAL MAP



GRAPHIC SCALE 1" = 2000'

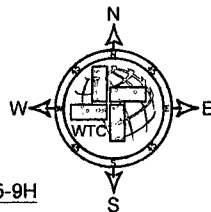
SECTION 35, T 25 S, R 29 E, N.M.P.M.

COUNTY: EDDY STATE: NM

DESCRIPTION: 300' FNL & 260' FEL

OPERATOR: RKI EXPLORATION & PRODUCTION

WELL NAME: NORTH BRUSHY DRAW FEDERAL 35-9H



DRIVING DIRECTIONS:

From the intersection of 285 and Longhorn County Road 725 go on 725 for 4.3 miles to a Lease Road. Go Northeast 3.7 miles to another Lease Road. Go South 0.2 mile to the Fed 35 1H Well location. Turn left and go East 0.3 mile to a point 206' North of location.

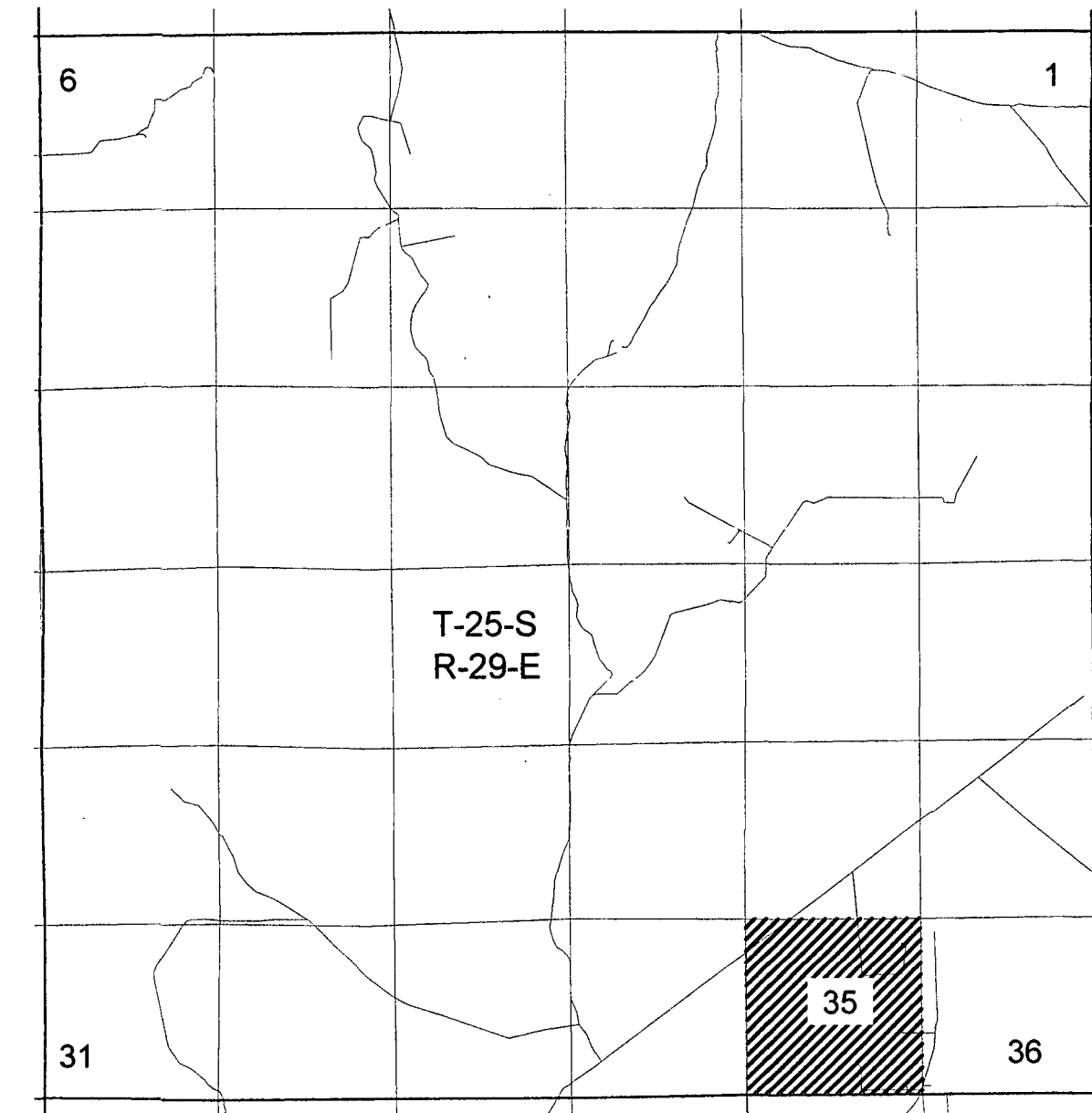


WTC, INC.
405 S.W. 1st. STREET
ANDREWS, TEXAS 79714
(432) 523-2181

RKI EXPLORATION & PRODUCTION

JOB No.: WTC49483

VICINITY MAP



0 1 2 3
GRAPHIC SCALE 1" = 1 MILE

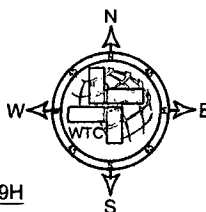
SECTION 35, T 25 S, R 29 E, N.M.P.M.

COUNTY: EDDY STATE: NM

DESCRIPTION: 300' FNL & 260' FEL

OPERATOR: RKI EXPLORATION & PRODUCTION

WELL NAME: NORTH BRUSHY DRAW FEDERAL 35-9H



DRIVING DIRECTIONS:

From the intersection of 285 and Longhorn County Road 725 go on 725 for 4.3 miles to a Lease Road. Go Northeast 3.7 miles to another Lease Road. Go South 0.2 mile to the Fed 35 1H Well location. Turn left and go East 0.3 mile to a point 206' North of location.



WTC, INC.
405 S.W. 1st STREET
ANDREWS, TEXAS 79714
(432) 523-2181

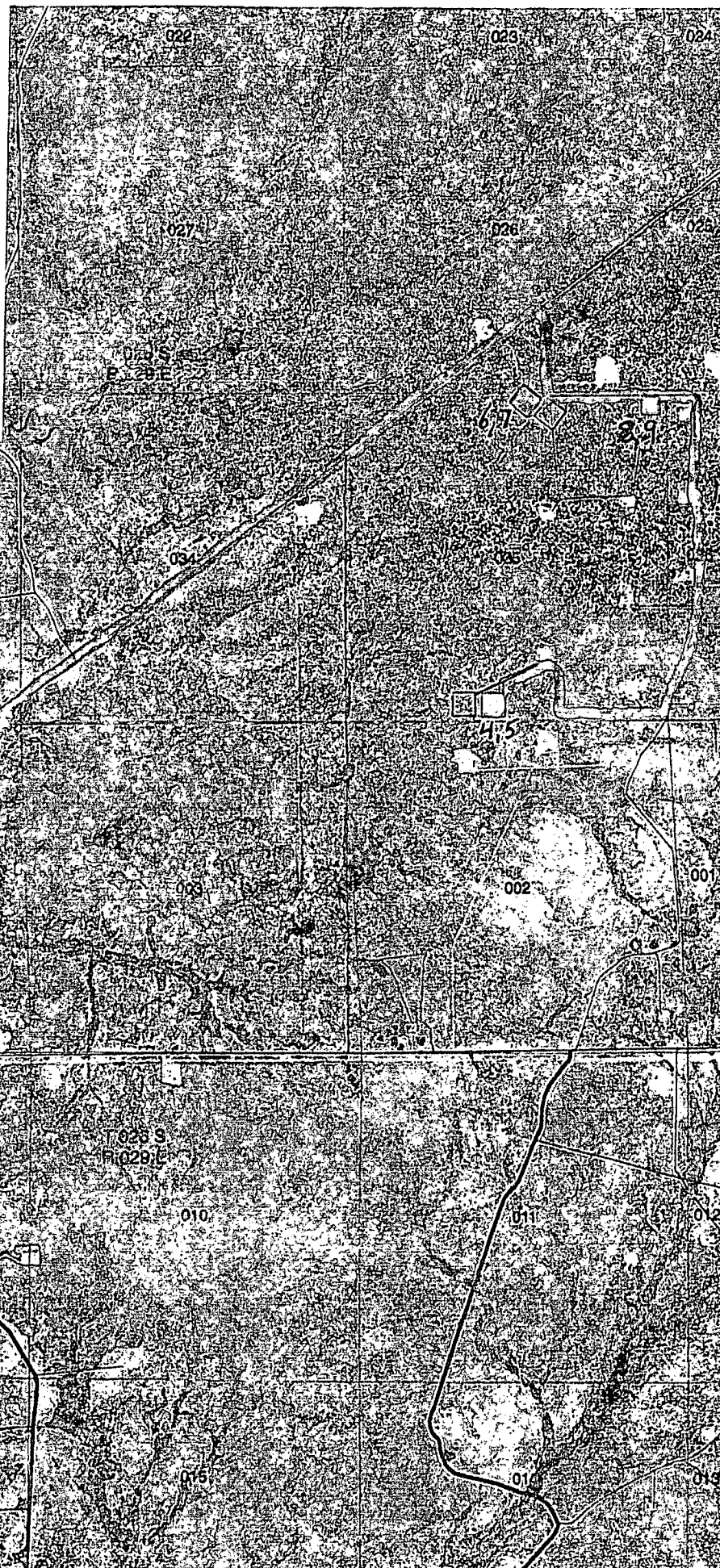
RKI EXPLORATION & PRODUCTION

JOB No.: WTC49483

Exhibit A

Access

2.2" = 1 mile



PATRON 23 FEDERAL #001H

Exhibit B

2.2" = 1 mile

PATRON 23 FEDERAL #001H

023 024 019

028 027 026 025 030 025 S 028 E

033 034 035 036 031

CORRAL FED UT #001

CORRAL FED UT #002

NORTH BRUSHY 26 FEDERAL #00125 FEDERAL #001

35-6H, 7H 35-8H, 9H 35-1H

BISON WALLOW UNIT #001

N BRUSHY DRAW A 35 FEDERAL #006

DUNES 36 STATE #001

N BRUSHY DRAW A 35 FEDERAL #007

NORTH BRUSHY DRAW 35 FEDERAL #001

POGO 36 STATE #001

POGO 36 STATE #001

DRAW BJL STATE #001

N BRUSHY DRAW A 35 FEDERAL #008

POGO 36 STATE #002

N BRUSHY DRAW A 35 FEDERAL #004

35-3H 35-4H, 5H

ESQUE 2 STATE #001

CAT CLAW ST #001

REPOSADO 2 STATE #001H

CHINA GROVE FEDERAL #001

BRUSHY DRAW 6 FEDERAL #001

004 003 002 001 006

PHILLIPS FEDERAL #001

009 010 011 012 007

GEHRIG FEDERAL #001

JR'S HORZ FEDERAL #001

JR'S HORZ FEDERAL #002

BRUSHY 12 A FEDERAL #001

BRUSHY 12 FEDERAL #004

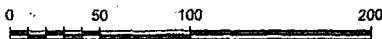
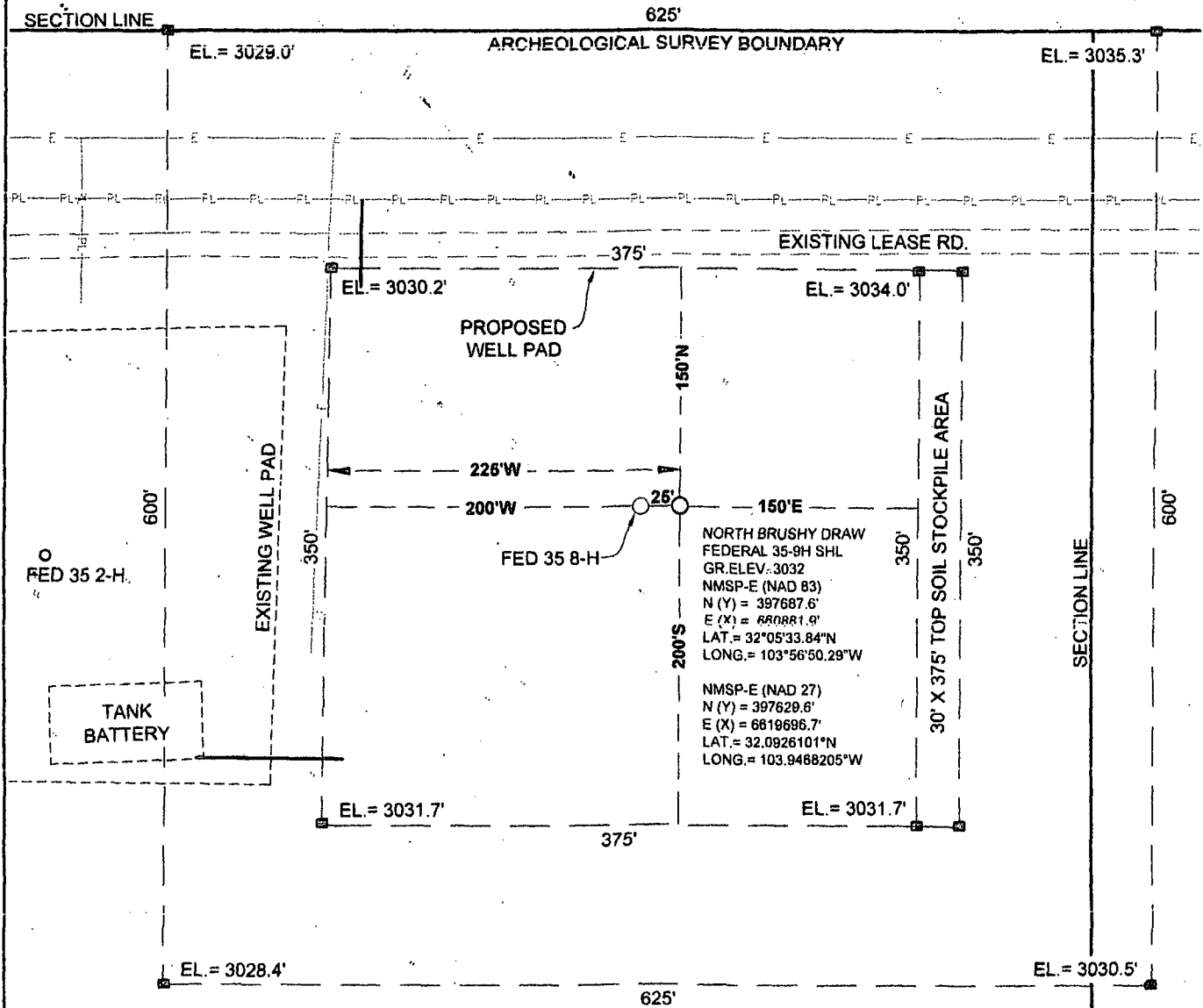
BRUSHY 12 FEDERAL #002

HANSON FEDERAL #001

BRUSHY 12 FEDERAL #001

PHICOU FEDERAL #001

Exhibit E SITE LOCATION



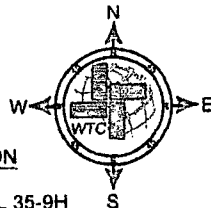
SECTION 35, T 25 S, R 29 E, N.M.P.M.

COUNTY: EDDY STATE: NM

DESCRIPTION: 300' FNL & 260' FEL

OPERATOR: RKI EXPLORATION & PRODUCTION

WELL NAME: NORTH BRUSHY DRAW FEDERAL 35-9H



DRIVING DIRECTIONS:

From the intersection of 285 and Longhorn County Road 725 go on 725 for 4.3 miles to a Lease Road. Go Northeast 3.7 miles to another Lease Road. Go South 0.2 mile to the Fed 35 1H Well location. Turn left and go East 0.3 mile to a point 206' North of location.



WTC, INC.
405 S.W. 1st. STREET
ANDREWS, TEXAS 79714
(432) 523-2181

RKI EXPLORATION & PRODUCTION

JOB No.: WTC49483

RKI Exploration & Production, LLC

Well North Brushy Draw Federal 35-9H
 Location Surface: 300 FNL 260 FEL Sec. 35-25S-29E
 Bottom Hole: 230 FSL 350 FEL Sec. 35-25S-29E
 County Eddy
 State New Mexico

- 1) The elevation of the unprepared ground is 3,032 feet above sea level.
- 2) The geologic name of the surface formation is Quaternary - Alluvium.
- 3) A rotary rig will be utilized to drill the well to 13,545 feet and run casing & cement.
 This equipment will then be rigged down and the well will be completed with a workover rig.
- 4) Proposed depth is 13,545 feet

5) Estimated tops:

	MD	TVD		
Rustler	800	800		
Salado	1,100	1,100		
Castile	1,450	1,450		
Lamar Lime	3,118	3,118		
Base of Lime	3,158	3,158		
Delaware Top	3,560	3,560		
Bell Canyon Sand	3,560	3,560	Oil	BHP = .44 psi/ft x depth 1,566 psi
Cherry Canyon Sand	4,242	4,242	Oil	1,866 psi
Brushy Canyon Sand	5,554	5,554	Oil	2,444 psi
Bone Spring	7,203	7,203	Oil	3,169 psi
KOP	8,401	8,401	Oil	3,696 psi
Landing Point (Bone Spring Sand)	9,424	9,050	Oil	3,982 psi
TD	13,545	8,970		3,947 psi

Water anticipated at 200 feet.

130 degree F

6) Pressure control equipment:

The blowout preventer equipment (BOP) shown in Exhibit #1 will consist of a double ram type (3,000 psi WP) preventer, a bag-type annular preventer (3,000 psi WP), and rotating head. Both units will be hydraulically operated and the ram type preventer will be equipped with blind rams on top and pipe rams (sized to accommodate the drill pipe size being utilized) on bottom. A 13 3/8" SOW x 13 5/8" 3M multi-bowl casing head will be installed on the 13 3/8" casing and utilized until total depth is reached. All BOP and associated equipment will be tested to 3,000 psi and the annular will be tested to 1,500 psi after initial installation. The 13 3/8" and 9 5/8" casing will be tested to .22 psi per ft of casing string length or 1,500 psi whichever is greater, but not to exceed 70% of the minimum yield.

The 9 5/8" casing will be hung in the casing multi-bowl head and the stack will not be nipped down at this point. The stack will not be isolated and tested after running the 9 5/8" casing, but will be tested along with the 9 5/8" casing. Pipe rams will be operated and checked each 24 hour period and each time the drill string is out of the hole.

These function test will be documented on the daily driller's log.

A drilling spool or blowout preventer with 2 side outlets (choke side shall be 3" minimum diameter, kill side shall be at least 2" diameter).

2 kill line valves, one of which will be a check valve.

2 chokes on the manifold along with a pressure gauge.

Upper kelly cock valve with handle available.

Safety valve and subs to fit all drill string connections in use.

All BOP equipment connections subjected to pressure will be flanged, welded, or clamped.

Fill-up line above the upper most preventer.

7) Casing program: ALL NEW CASING

Hole Size	Top	Bottom	OD Csg	Wt/Grade	Connection	Collapse Design Factor	Burst Design Factor	Tension Design Factor
17 1/2"	0	850 600	13 3/8"	54.5#/J-55	ST&C	3.02	14.60	11.10
12 1/4"	0	3,150	9 5/8"	40#/J-55	LT&C	1.46	5.70	4.13
8 3/4"	0	13,545	5 1/2"	17#/HCP-110	LT&C	2.07	1.55	5.24
Collapse	1.125							
Burst	1.0							
Tension	2.0							

8) Cement program:

Surface	17 1/2" hole
Pipe OD	13 3/8"
Setting Depth	850 ft
Annular Volume	0.69462 cf/ft
Excess	1
	100 %

Lead	523 sx	1.75 cf/sk	9.13 gal/sk	13.5 ppg
Tail	200 sx	1.33 cf/sk	6.32 gal/sk	14.8 ppg

Lead: "C" + 4% PF20 + 2% PF1 + .125 pps PF29 + .2% PF46

Tail: "C" + 1% PF1

Top of cement: Surface

Intermediate	12 1/4" hole
Pipe OD	9 5/8"
Setting Depth	3,150 ft
Annular Volume	0.31318 cf/ft
Excess	0.5
	50 %

Lead	596 sx	1.92 cf/sk	9.95 gal/sk	12.6 ppg
Tail	200 sx	1.33 cf/sk	6.32 gal/sk	14.8 ppg

Lead: 35/65 Poz "C" + 5% PF44 + 6% PF20 + 3 pps PF42 + .125 pps PF29 + .2% PF46 + 1% PF1

Tail: "C" + .2% PF13

Top of cement: Surface

Production	8 3/4" hole
Pipe OD	5 1/2"
Setting Depth	13,545 ft
Annular Volume	0.2526 cf/ft
Excess	0.32
DV Tool Depth	5,000 ft
	32 %

Stage 1

Lead:	689 sx	2.08 cf/sk	11.94 gal/sk	11.5 ppg
Tail:	757 sx	1.87 cf/sk	9.53 gal/sk	13.0 ppg

Lead: PVL + .5% CC + .3% PF79 (extender) + .25 pps PF46 (defoamer) + 3 pps PF42 (Kolite) + .125 pps + .125 pps PF29 (Cellophane) + .2% PF13 (retarder)

Tail: PVL + 30% PF151 (calcium carbonate) + .5% PF174 (expanding agent) + .7% PF606 + .7% PF606 (gel suppressing agent) + .2% PF153 (antisettling agent) + .25 pps PF46 (antifoam) + .2% PF13 (retarder)

Top of cement: DV tool

Stage 2

Lead:	258 sx	1.89 cf/sk	10.06 gal/sk	12.9 ppg
Tail:	175 sx	1.33 cf/sk	6.32 gal/sk	14.8 ppg

Lead: 35/65 Poz "C" + 5% PF44 (salt) + 6% PF20 (gel) + .125 pps PF29 (cellophane) + .25 pps PF46 (antifoam) + .2% PF13 (retarder)

Tail: "C" + .2% PF13 (retarder)

Top of cement: 2,850 ft

9) Mud program:

See COA

Top	Bottom	Mud Wt.	Vis	Fluid Loss	Type System
0	850 600	8.5 to 8.9	32 to 36	NC	Fresh Water
850	3,150	9.8 to 10.0	28 to 30	NC	Brine
3,150	13,545	8.9 to 9.1	28 to 36	NC	Fresh Water

The necessary mud products for weight addition and fluid loss control will be on location at all times. Electronic pit monitoring equipment will be utilized with a Pason system. Electronic mud monitoring and mud logging will be utilized below the 9 5/8" casing.

10) Logging, coring, and testing program:

No drill stem test are planned
 Total depth to intermediate: CNL, Caliper, GR, DLL,
 Intermediate to surface: CNL, GR
 No coring is planned

11) Potential hazards:

No abnormal pressure or temperature is expected. No H2S is known to exist in the area, although some form of H2S detection equipment will be utilized. If H2S is encountered the operator will comply with the provisions of Onshore Order No. 6. Lost circulation is not anticipated, but lost circulation material and weighting materials will be on location and readily available.

12) Anticipated start date: ASAP
 Duration: 25 days

RKI Exploration & Production

Eddy County (NM83E)

Sec 35-T25S-R29E

North Brushy Draw Fed 35-9H

Wellbore #1

Plan: Prelim Plan

Standard Planning Report

24 January, 2014

RKI Exploration & Production

Project: Eddy County (NM83E)
 Site: Sec 35-T25S-R29E
 Well: North Brushy Draw Fed 35-9H
 Wellbore: Wellbore #1
 Design: Prelim Plan



Azimuths to True North
 Magnetic North: 7.43°
 Magnetic Field
 Strength: 48260.7snT
 Dip Angle: 59.94°
 Date: 01/24/2014
 Model: IGRF2010

WOLVERINE
 DIRECTIONAL

WELL DETAILS: North Brushy Draw Fed 35-9H

Ground Level: 0.0
 +N/-S +E/-W Northing Easting Latitude Longitude
 0.0 0.0 397687.60 660881.90 32° 5' 33.844 N 103° 56' 50.293 W
 SHL: 300' FNL / 260' FEL
 BHL: 230' FSL / 350' FEL

SECTION DETAILS

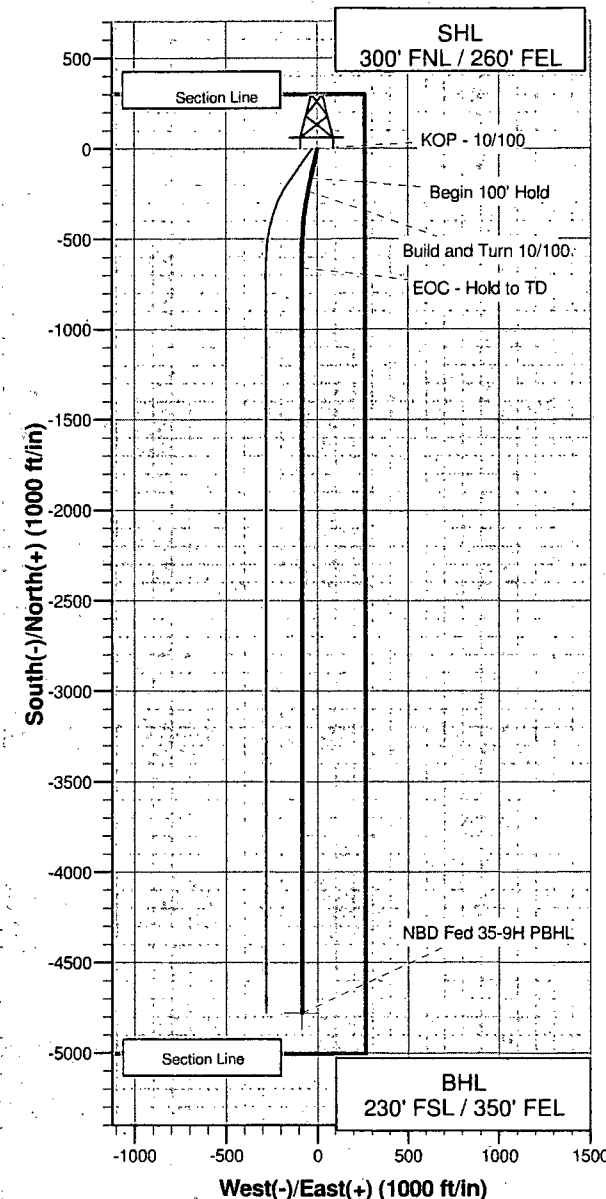
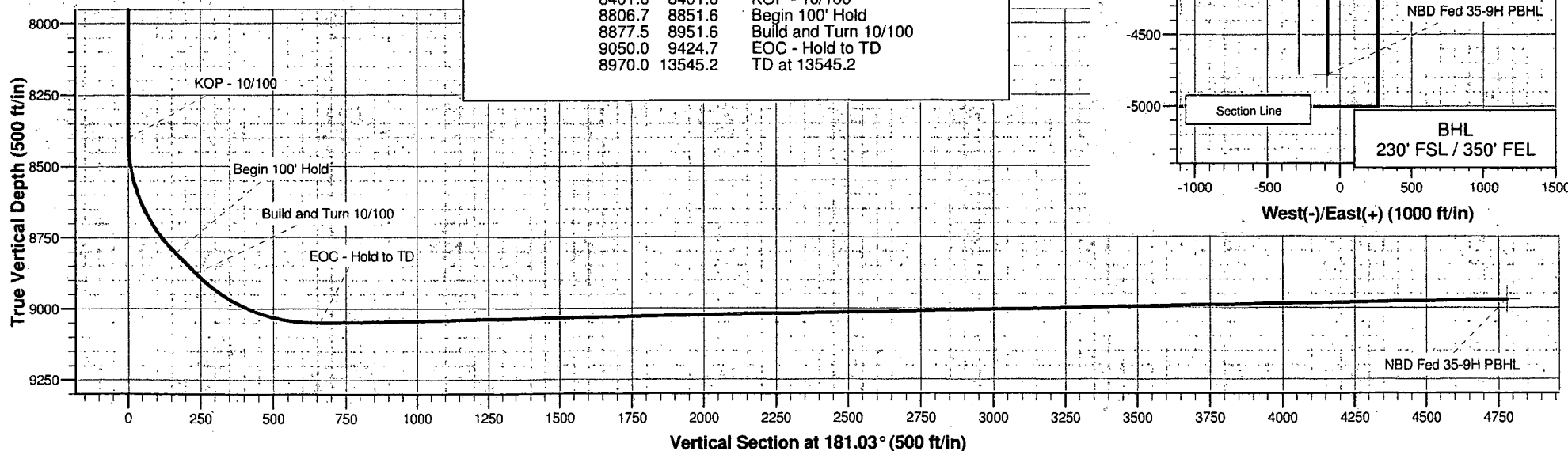
Sec	MD	Inc	Azi	TVD	+N/-S	+E/-W	DLeg	TFace	VSec	Target
1	0.0	0.00	0.00	0.0	0.0	0.0	0.00	0.00	0.0	
2	8401.6	0.00	0.00	8401.6	0.0	0.0	0.00	0.00	0.0	
3	8851.6	45.00	191.90	8806.7	-164.2	-34.6	10.00	191.90	164.8	
4	8951.6	45.00	191.90	8877.5	-233.4	-49.2	0.00	0.00	234.2	
5	9424.7	91.11	180.00	9050.0	-657.9	-85.8	10.00	-16.29	659.4	
6	13545.2	91.12	180.00	8970.0	-4777.7	-85.7	0.00	-18.14	4778.5	NBD Fed 35-9H PBHL

Wellbore TARGET DETAILS (MAP CO-ORDINATES)

Name	TVD	+N/-S	+E/-W	Northing	Easting	Shape
NBD Fed 35-9H PBHL	8970.0	-4777.7	-85.7	392909.60	660813.30	Point

Annotations

TVD	MD	Annotation
8401.6	8401.6	KOP - 10/100
8806.7	8851.6	Begin 100' Hold
8877.5	8951.6	Build and Turn 10/100
9050.0	9424.7	EOC - Hold to TD
8970.0	13545.2	TD at 13545.2



Wolverine Directional, LLC

Planning Report

Database:	EDM 2003.21 Single User.Db	Local Co-ordinate Reference:	Well North Brushy Draw Fed 35-9H
Company:	RKI Exploration & Production	TVD Reference:	WELL @ 0.0ft (Original Well Elev)
Project:	Eddy County (NM83E)	MD Reference:	WELL @ 0.0ft (Original Well Elev)
Site:	Sec 35-T25S-R29E	North Reference:	True
Well:	North Brushy Draw Fed 35-9H	Survey Calculation Method:	Minimum Curvature
Wellbore:	Wellbore #1		
Design:	Prelim Plan		

Project	Eddy County (NM83E)		
Map System:	US State Plane 1983	System Datum:	Mean Sea Level
Geo Datum:	North American Datum 1983		
Map Zone:	New Mexico Eastern Zone		

Site	Sec 35-T25S-R29E		
Site Position:		Northing:	397,657.00ft
From:	Map	Easting:	660,482.20ft
Position Uncertainty:	0.0 ft	Slot Radius:	"
		Latitude:	32° 5' 33.556 N
		Longitude:	103° 56' 54.941 W
		Grid Convergence:	0.20 °

Well	North Brushy Draw Fed 35-9H		
Well Position	+N/-S	29.2 ft	Northing: 397,687.60 ft
	+E/-W	399.8 ft	Easting: 660,881.90 ft
Position Uncertainty	0.0 ft	Wellhead Elevation:	ft
		Latitude:	32° 5' 33.844 N
		Longitude:	103° 56' 50.293 W
		Ground Level:	0.0ft

Wellbore	Wellbore #1		
Magnetics	Model Name	Sample Date	Declination
			(°)
	IGRF2010	01/24/14	7.43
			(°)
			59.94
			48,261
			(nT)

Design	Prelim Plan		
Audit Notes:			
Version:	Phase:	PLAN	Tie On Depth: 0.0
Vertical Section:	Depth From (TVD)	+N/-S	+E/-W
	(ft)	(ft)	(ft)
	0.0	0.0	0.0
			181.03
			(°)

Plan Sections										
Measured Depth (ft)	Inclination (°)	Azimuth (°)	Vertical Depth (ft)	+N/-S (ft)	+E/-W (ft)	Dogleg Rate (°/100ft)	Build Rate (°/100ft)	Turn Rate (°/100ft)	TFO (°)	Target
0.0	0.00	0.00	0.0	0.0	0.0	0.00	0.00	0.00	0.00	
8,401.6	0.00	0.00	8,401.6	0.0	0.0	0.00	0.00	0.00	0.00	
8,851.6	45.00	191.90	8,806.7	-164.2	-34.6	10.00	10.00	0.00	191.90	
8,951.6	45.00	191.90	8,877.5	-233.4	-49.2	0.00	0.00	0.00	0.00	
9,424.7	91.11	180.00	9,050.0	-657.9	-85.8	10.00	9.75	-2.52	-16.29	
13,545.2	91.12	180.00	8,970.0	-4,777.7	-85.7	0.00	0.00	0.00	-18.14	NBD Fed 35-9H PE

Wolverine Directional, LLC

Planning Report

Database:	EDM 2003.21 Single User Db	Local Co-ordinate Reference:	Well North Brushy Draw Fed 35-9H
Company:	RKI Exploration & Production	TVD Reference:	WELL @ 0.0ft (Original Well Elev)
Project:	Eddy County (NM83E)	MD Reference:	WELL @ 0.0ft (Original Well Elev)
Site:	Sec 35-T25S-R29E	North Reference:	True
Well:	North Brushy Draw Fed 35-9H	Survey Calculation Method:	Minimum Curvature
Wellbore:	Wellbore #1		
Design:	Prelim Plan		

Planned Survey									
Measured Depth (ft)	Inclination (°)	Azimuth (°)	Vertical Depth (ft)	+N-S (ft)	+E-W (ft)	Vertical Section (ft)	Dogleg Rate (°/100ft)	Build Rate (°/100ft)	Turn Rate (°/100ft)
0.0	0.00	0.00	0.0	0.0	0.0	0.0	0.00	0.00	0.00
100.0	0.00	0.00	100.0	0.0	0.0	0.0	0.00	0.00	0.00
200.0	0.00	0.00	200.0	0.0	0.0	0.0	0.00	0.00	0.00
300.0	0.00	0.00	300.0	0.0	0.0	0.0	0.00	0.00	0.00
400.0	0.00	0.00	400.0	0.0	0.0	0.0	0.00	0.00	0.00
500.0	0.00	0.00	500.0	0.0	0.0	0.0	0.00	0.00	0.00
600.0	0.00	0.00	600.0	0.0	0.0	0.0	0.00	0.00	0.00
700.0	0.00	0.00	700.0	0.0	0.0	0.0	0.00	0.00	0.00
800.0	0.00	0.00	800.0	0.0	0.0	0.0	0.00	0.00	0.00
900.0	0.00	0.00	900.0	0.0	0.0	0.0	0.00	0.00	0.00
1,000.0	0.00	0.00	1,000.0	0.0	0.0	0.0	0.00	0.00	0.00
1,100.0	0.00	0.00	1,100.0	0.0	0.0	0.0	0.00	0.00	0.00
1,200.0	0.00	0.00	1,200.0	0.0	0.0	0.0	0.00	0.00	0.00
1,300.0	0.00	0.00	1,300.0	0.0	0.0	0.0	0.00	0.00	0.00
1,400.0	0.00	0.00	1,400.0	0.0	0.0	0.0	0.00	0.00	0.00
1,500.0	0.00	0.00	1,500.0	0.0	0.0	0.0	0.00	0.00	0.00
1,600.0	0.00	0.00	1,600.0	0.0	0.0	0.0	0.00	0.00	0.00
1,700.0	0.00	0.00	1,700.0	0.0	0.0	0.0	0.00	0.00	0.00
1,800.0	0.00	0.00	1,800.0	0.0	0.0	0.0	0.00	0.00	0.00
1,900.0	0.00	0.00	1,900.0	0.0	0.0	0.0	0.00	0.00	0.00
2,000.0	0.00	0.00	2,000.0	0.0	0.0	0.0	0.00	0.00	0.00
2,100.0	0.00	0.00	2,100.0	0.0	0.0	0.0	0.00	0.00	0.00
2,200.0	0.00	0.00	2,200.0	0.0	0.0	0.0	0.00	0.00	0.00
2,300.0	0.00	0.00	2,300.0	0.0	0.0	0.0	0.00	0.00	0.00
2,400.0	0.00	0.00	2,400.0	0.0	0.0	0.0	0.00	0.00	0.00
2,500.0	0.00	0.00	2,500.0	0.0	0.0	0.0	0.00	0.00	0.00
2,600.0	0.00	0.00	2,600.0	0.0	0.0	0.0	0.00	0.00	0.00
2,700.0	0.00	0.00	2,700.0	0.0	0.0	0.0	0.00	0.00	0.00
2,800.0	0.00	0.00	2,800.0	0.0	0.0	0.0	0.00	0.00	0.00
2,900.0	0.00	0.00	2,900.0	0.0	0.0	0.0	0.00	0.00	0.00
3,000.0	0.00	0.00	3,000.0	0.0	0.0	0.0	0.00	0.00	0.00
3,100.0	0.00	0.00	3,100.0	0.0	0.0	0.0	0.00	0.00	0.00
3,200.0	0.00	0.00	3,200.0	0.0	0.0	0.0	0.00	0.00	0.00
3,300.0	0.00	0.00	3,300.0	0.0	0.0	0.0	0.00	0.00	0.00
3,400.0	0.00	0.00	3,400.0	0.0	0.0	0.0	0.00	0.00	0.00
3,500.0	0.00	0.00	3,500.0	0.0	0.0	0.0	0.00	0.00	0.00
3,600.0	0.00	0.00	3,600.0	0.0	0.0	0.0	0.00	0.00	0.00
3,700.0	0.00	0.00	3,700.0	0.0	0.0	0.0	0.00	0.00	0.00
3,800.0	0.00	0.00	3,800.0	0.0	0.0	0.0	0.00	0.00	0.00
3,900.0	0.00	0.00	3,900.0	0.0	0.0	0.0	0.00	0.00	0.00
4,000.0	0.00	0.00	4,000.0	0.0	0.0	0.0	0.00	0.00	0.00
4,100.0	0.00	0.00	4,100.0	0.0	0.0	0.0	0.00	0.00	0.00
4,200.0	0.00	0.00	4,200.0	0.0	0.0	0.0	0.00	0.00	0.00
4,300.0	0.00	0.00	4,300.0	0.0	0.0	0.0	0.00	0.00	0.00
4,400.0	0.00	0.00	4,400.0	0.0	0.0	0.0	0.00	0.00	0.00
4,500.0	0.00	0.00	4,500.0	0.0	0.0	0.0	0.00	0.00	0.00
4,600.0	0.00	0.00	4,600.0	0.0	0.0	0.0	0.00	0.00	0.00
4,700.0	0.00	0.00	4,700.0	0.0	0.0	0.0	0.00	0.00	0.00
4,800.0	0.00	0.00	4,800.0	0.0	0.0	0.0	0.00	0.00	0.00
4,900.0	0.00	0.00	4,900.0	0.0	0.0	0.0	0.00	0.00	0.00
5,000.0	0.00	0.00	5,000.0	0.0	0.0	0.0	0.00	0.00	0.00
5,100.0	0.00	0.00	5,100.0	0.0	0.0	0.0	0.00	0.00	0.00
5,200.0	0.00	0.00	5,200.0	0.0	0.0	0.0	0.00	0.00	0.00
5,300.0	0.00	0.00	5,300.0	0.0	0.0	0.0	0.00	0.00	0.00

Wolverine Directional, LLC

Planning Report

Database:	EDM:2003.21 Single User Db	Local Co-ordinate Reference:	Well North: Brushy Draw Fed 35-9H
Company:	RKI Exploration & Production	TVD Reference:	WELL @ 0.0ft (Original Well Elev)
Project:	Eddy County (NM83E)	MD Reference:	WELL @ 0.0ft (Original Well Elev)
Site:	Sec 35-T25S-R29E	North Reference:	True
Well:	North Brushy Draw Fed 35-9H	Survey Calculation Method:	Minimum Curvature
Wellbore:	Wellbore #1		
Design:	Prelim Plan		

Planned Survey										
Measured Depth (ft)	Inclination (°)	Azimuth (°)	Vertical Depth (ft)	+N/-S (ft)	+E/-W (ft)	Vertical Section (ft)	Dogleg Rate (°/100ft)	Build Rate (°/100ft)	Turn Rate (°/100ft)	
5,400.0	0.00	0.00	5,400.0	0.0	0.0	0.0	0.00	0.00	0.00	
5,500.0	0.00	0.00	5,500.0	0.0	0.0	0.0	0.00	0.00	0.00	
5,600.0	0.00	0.00	5,600.0	0.0	0.0	0.0	0.00	0.00	0.00	
5,700.0	0.00	0.00	5,700.0	0.0	0.0	0.0	0.00	0.00	0.00	
5,800.0	0.00	0.00	5,800.0	0.0	0.0	0.0	0.00	0.00	0.00	
5,900.0	0.00	0.00	5,900.0	0.0	0.0	0.0	0.00	0.00	0.00	
6,000.0	0.00	0.00	6,000.0	0.0	0.0	0.0	0.00	0.00	0.00	
6,100.0	0.00	0.00	6,100.0	0.0	0.0	0.0	0.00	0.00	0.00	
6,200.0	0.00	0.00	6,200.0	0.0	0.0	0.0	0.00	0.00	0.00	
6,300.0	0.00	0.00	6,300.0	0.0	0.0	0.0	0.00	0.00	0.00	
6,400.0	0.00	0.00	6,400.0	0.0	0.0	0.0	0.00	0.00	0.00	
6,500.0	0.00	0.00	6,500.0	0.0	0.0	0.0	0.00	0.00	0.00	
6,600.0	0.00	0.00	6,600.0	0.0	0.0	0.0	0.00	0.00	0.00	
6,700.0	0.00	0.00	6,700.0	0.0	0.0	0.0	0.00	0.00	0.00	
6,800.0	0.00	0.00	6,800.0	0.0	0.0	0.0	0.00	0.00	0.00	
6,900.0	0.00	0.00	6,900.0	0.0	0.0	0.0	0.00	0.00	0.00	
7,000.0	0.00	0.00	7,000.0	0.0	0.0	0.0	0.00	0.00	0.00	
7,100.0	0.00	0.00	7,100.0	0.0	0.0	0.0	0.00	0.00	0.00	
7,200.0	0.00	0.00	7,200.0	0.0	0.0	0.0	0.00	0.00	0.00	
7,300.0	0.00	0.00	7,300.0	0.0	0.0	0.0	0.00	0.00	0.00	
7,400.0	0.00	0.00	7,400.0	0.0	0.0	0.0	0.00	0.00	0.00	
7,500.0	0.00	0.00	7,500.0	0.0	0.0	0.0	0.00	0.00	0.00	
7,600.0	0.00	0.00	7,600.0	0.0	0.0	0.0	0.00	0.00	0.00	
7,700.0	0.00	0.00	7,700.0	0.0	0.0	0.0	0.00	0.00	0.00	
7,800.0	0.00	0.00	7,800.0	0.0	0.0	0.0	0.00	0.00	0.00	
7,900.0	0.00	0.00	7,900.0	0.0	0.0	0.0	0.00	0.00	0.00	
8,000.0	0.00	0.00	8,000.0	0.0	0.0	0.0	0.00	0.00	0.00	
8,100.0	0.00	0.00	8,100.0	0.0	0.0	0.0	0.00	0.00	0.00	
8,200.0	0.00	0.00	8,200.0	0.0	0.0	0.0	0.00	0.00	0.00	
8,300.0	0.00	0.00	8,300.0	0.0	0.0	0.0	0.00	0.00	0.00	
8,401.6	0.00	0.00	8,401.6	0.0	0.0	0.0	0.00	0.00	0.00	
KOP - 10/100										
8,450.0	4.84	191.90	8,449.9	-2.0	-0.4	2.0	10.00	10.00	0.00	
8,500.0	9.84	191.90	8,499.5	-8.2	-1.7	8.3	10.00	10.00	0.00	
8,550.0	14.84	191.90	8,548.3	-18.7	-3.9	18.8	10.00	10.00	0.00	
8,600.0	19.84	191.90	8,596.1	-33.3	-7.0	33.4	10.00	10.00	0.00	
8,650.0	24.84	191.90	8,642.3	-51.9	-10.9	52.1	10.00	10.00	0.00	
8,700.0	29.84	191.90	8,686.7	-74.3	-15.7	74.6	10.00	10.00	0.00	
8,750.0	34.84	191.90	8,728.9	-100.5	-21.2	100.9	10.00	10.00	0.00	
8,800.0	39.84	191.90	8,768.7	-130.2	-27.4	130.6	10.00	10.00	0.00	
8,851.6	45.00	191.90	8,806.7	-164.2	-34.6	164.8	10.00	10.00	0.00	
Begin 100' Hold										
8,900.0	45.00	191.90	8,841.0	-197.7	-41.7	198.4	0.00	0.00	0.00	
8,951.6	45.00	191.90	8,877.5	-233.4	-49.2	234.2	0.00	0.00	0.00	
Build and Turn 10/100										
9,000.0	49.66	190.12	8,910.2	-268.3	-56.0	269.3	10.00	9.63	-3.68	
9,050.0	54.50	188.52	8,941.0	-307.2	-62.3	308.3	10.00	9.68	-3.19	
9,100.0	59.36	187.11	8,968.2	-348.7	-68.0	349.9	10.00	9.72	-2.83	
9,150.0	64.23	185.83	8,991.9	-392.5	-73.0	393.7	10.00	9.74	-2.56	
9,200.0	69.11	184.65	9,011.7	-438.2	-77.1	439.5	10.00	9.76	-2.35	
9,250.0	74.00	183.55	9,027.5	-485.5	-80.5	486.9	10.00	9.78	-2.21	
9,300.0	78.89	182.50	9,039.2	-534.0	-83.1	535.4	10.00	9.79	-2.10	
9,350.0	83.79	181.49	9,046.7	-583.4	-84.8	584.8	10.00	9.80	-2.03	

Wolverine Directional, LLC

Planning Report

Database:	EDM 2003.21 Single User Db	Local Co-ordinate Reference:	Well North Brushy Draw Fed 35-9H
Company:	RKI Exploration & Production	TVD Reference:	WELL @ 0.0ft (Original Well Elev)
Project:	Eddy County (NM83E)	MD Reference:	WELL @ 0.0ft (Original Well Elev)
Site:	Sec 35-T25S-R29E	North Reference:	True
Well:	North Brushy Draw Fed 35-9H	Survey Calculation Method:	Minimum Curvature
Wellbore:	Wellbore #1		
Design:	Prelim Plan		

Planned Survey									
Measured Depth (ft)	Inclination (°)	Azimuth (°)	Vertical Depth (ft)	+N/-S (ft)	+E/-W (ft)	Vertical Section (ft)	Dogleg Rate (°/100ft)	Build Rate (°/100ft)	Turn Rate (°/100ft)
9,400.0	88.69	180.49	9,050.0	-633.3	-85.7	634.7	10.00	9.80	-1.99
9,424.7	91.11	180.00	9,050.0	-657.9	-85.8	659.4	10.00	9.80	-1.98
EOC Hold to TD									
9,500.0	91.11	180.00	9,048.6	-733.3	-85.8	734.7	0.00	0.00	0.00
9,600.0	91.11	180.00	9,046.6	-833.2	-85.8	834.6	0.00	0.00	0.00
9,700.0	91.11	180.00	9,044.7	-933.2	-85.8	934.6	0.00	0.00	0.00
9,800.0	91.11	180.00	9,042.8	-1,033.2	-85.8	1,034.6	0.00	0.00	0.00
9,900.0	91.11	180.00	9,040.8	-1,133.2	-85.8	1,134.5	0.00	0.00	0.00
10,000.0	91.11	180.00	9,038.9	-1,233.2	-85.8	1,234.5	0.00	0.00	0.00
10,100.0	91.11	180.00	9,037.0	-1,333.2	-85.8	1,334.5	0.00	0.00	0.00
10,200.0	91.11	180.00	9,035.0	-1,433.1	-85.8	1,434.4	0.00	0.00	0.00
10,300.0	91.11	180.00	9,033.1	-1,533.1	-85.8	1,534.4	0.00	0.00	0.00
10,400.0	91.11	180.00	9,031.1	-1,633.1	-85.8	1,634.4	0.00	0.00	0.00
10,500.0	91.11	180.00	9,029.2	-1,733.1	-85.8	1,734.3	0.00	0.00	0.00
10,600.0	91.11	180.00	9,027.3	-1,833.1	-85.8	1,834.3	0.00	0.00	0.00
10,700.0	91.11	180.00	9,025.3	-1,933.0	-85.8	1,934.3	0.00	0.00	0.00
10,800.0	91.11	180.00	9,023.4	-2,033.0	-85.8	2,034.2	0.00	0.00	0.00
10,900.0	91.11	180.00	9,021.4	-2,133.0	-85.8	2,134.2	0.00	0.00	0.00
11,000.0	91.11	180.00	9,019.5	-2,233.0	-85.8	2,234.2	0.00	0.00	0.00
11,100.0	91.11	180.00	9,017.6	-2,333.0	-85.8	2,334.1	0.00	0.00	0.00
11,200.0	91.11	180.00	9,015.6	-2,432.9	-85.8	2,434.1	0.00	0.00	0.00
11,300.0	91.11	180.00	9,013.7	-2,532.9	-85.8	2,534.1	0.00	0.00	0.00
11,400.0	91.11	180.00	9,011.7	-2,632.9	-85.8	2,634.0	0.00	0.00	0.00
11,500.0	91.11	180.00	9,009.8	-2,732.9	-85.8	2,734.0	0.00	0.00	0.00
11,600.0	91.11	180.00	9,007.8	-2,832.9	-85.8	2,834.0	0.00	0.00	0.00
11,700.0	91.11	180.00	9,005.9	-2,932.8	-85.8	2,933.9	0.00	0.00	0.00
11,800.0	91.11	180.00	9,004.0	-3,032.8	-85.8	3,033.9	0.00	0.00	0.00
11,900.0	91.11	180.00	9,002.0	-3,132.8	-85.8	3,133.8	0.00	0.00	0.00
12,000.0	91.11	180.00	9,000.1	-3,232.8	-85.7	3,233.8	0.00	0.00	0.00
12,100.0	91.11	180.00	8,998.1	-3,332.8	-85.7	3,333.8	0.00	0.00	0.00
12,200.0	91.11	180.00	8,996.2	-3,432.8	-85.7	3,433.7	0.00	0.00	0.00
12,300.0	91.11	180.00	8,994.2	-3,532.7	-85.7	3,533.7	0.00	0.00	0.00
12,400.0	91.11	180.00	8,992.3	-3,632.7	-85.7	3,633.7	0.00	0.00	0.00
12,500.0	91.11	180.00	8,990.3	-3,732.7	-85.7	3,733.6	0.00	0.00	0.00
12,600.0	91.11	180.00	8,988.4	-3,832.7	-85.7	3,833.6	0.00	0.00	0.00
12,700.0	91.11	180.00	8,986.5	-3,932.7	-85.7	3,933.6	0.00	0.00	0.00
12,800.0	91.11	180.00	8,984.5	-4,032.6	-85.7	4,033.5	0.00	0.00	0.00
12,900.0	91.12	180.00	8,982.6	-4,132.6	-85.7	4,133.5	0.00	0.00	0.00
13,000.0	91.12	180.00	8,980.6	-4,232.6	-85.7	4,233.5	0.00	0.00	0.00
13,100.0	91.12	180.00	8,978.7	-4,332.6	-85.7	4,333.4	0.00	0.00	0.00
13,200.0	91.12	180.00	8,976.7	-4,432.6	-85.7	4,433.4	0.00	0.00	0.00
13,300.0	91.12	180.00	8,974.8	-4,532.5	-85.7	4,533.4	0.00	0.00	0.00
13,400.0	91.12	180.00	8,972.8	-4,632.5	-85.7	4,633.3	0.00	0.00	0.00
13,500.0	91.12	180.00	8,970.9	-4,732.5	-85.7	4,733.3	0.00	0.00	0.00
13,545.2	91.12	180.00	8,970.0	-4,777.7	-85.7	4,778.5	0.00	0.00	0.00
TD at 13545.2 - NBD Fed 35-9H PBHL									

Wolverine Directional, LLC

Planning Report

Database:	EDM 2003.21 Single User Db	Local Co-ordinate Reference:	Well North Brushy Draw Fed 35-9H
Company:	RKI Exploration & Production	TVD Reference:	WELL @ 0.0ft (Original Well Elev)
Project:	Eddy County (NM83E)	MD Reference:	WELL @ 0.0ft (Original Well Elev)
Site:	Sec 35-T25S-R29E	North Reference:	True
Well:	North Brushy Draw Fed 35-9H	Survey Calculation Method:	Minimum Curvature
Wellbore:	Wellbore #1		
Design:	Prelim Plan		

Targets									
Target Name	Dip Angle	Dip Dir.	TVD	+N/-S	+E/-W	Northing	Easting	Latitude	Longitude
- hit/miss target	(°)	(°)	(ft)	(ft)	(ft)	(ft)	(ft)		
- Shape									
NBD Fed 35-9H PBHI	0.00	0.00	8,970.0	-4,777.7	-85.7	392,909.60	660,813.30	32° 4' 46.563 N	103° 56' 51.289 W
- plan hits target									
- Point									

Plan Annotations					
Measured Depth	Vertical Depth	Local Coordinates			
(ft)	(ft)	+N/-S	+E/-W	Comment	
(ft)	(ft)	(ft)	(ft)		
8,401.6	8,401.6	0.0	0.0	KOP - 10/100	
8,851.6	8,806.7	-164.2	-34.6	Begin 100' Hold	
8,951.6	8,877.5	-233.4	-49.2	Build and Turn 10/100	
9,424.7	9,050.0	-657.9	-85.8	EOC - Hold to TD	
13,545.2	8,970.0	-4,777.7	-85.7	TD at 13545.2	

RKI Exploration & Production

Eddy County (NM83E)

Sec 35-T25S-R29E

North Brushy Draw Fed 35-9H

Wellbore #1

Prelim Plan

Anticollision Report

24 January, 2014

Wolverine Directional, LLC

Anticollision Report

Company:	RKI Exploration & Production	Local Co-ordinate Reference:	Well North Brushy Draw Fed 35-9H
Project:	Eddy County (NM83E)	TVD Reference:	WELL @ 0.0ft (Original Well Elev)
Reference Site:	Sec 35-T25S-R29E	MD Reference:	WELL @ 0.0ft (Original Well Elev)
Site Error:	0.0ft	North Reference:	True
Reference Well:	North Brushy Draw Fed 35-9H	Survey Calculation Method:	Minimum Curvature
Well Error:	0.0ft	Output errors are at:	2.00 sigma
Reference Wellbore:	Wellbore #1	Database:	EDM 2003.21 Single User Db
Reference Design:	Prelim Plan	Offset TVD Reference:	Offset Datum

Reference	Prelim Plan		
Filter type:	NO GLOBAL FILTER: Using user defined selection & filtering criteria		
Interpolation Method:	Stations	Error Model:	ISCWSA
Depth Range:	Unlimited	Scan Method:	Closest Approach 3D
Results Limited by:	Maximum center-center distance of 10,000.0ft	Error Surface:	Elliptical Conic
Warning Levels Evaluated at:	2.00 Sigma		

Survey Tool Program		Date	01/24/14	
From (ft)	To (ft)	Survey (Wellbore)	Tool Name	Description
0.0	13,545.1	Prelim Plan (Wellbore #1)	MWD	MWD - Standard

Summary						
Site Name	Reference Measured Depth (ft)	Offset Measured Depth (ft)	Distance Between Centres (ft)	Distance Between Ellipses (ft)	Separation Factor	Warning
Offset Well - Wellbore - Design						
Sec 35-T25S-R29E						
North Brushy Draw Fed 35-8H - Wellbore #1 - Prelim Pla	7,100.0	7,100.0	24.9	-6.8	0.786	Level 1, CC, ES, SF

Offset Design: Sec 35-T25S-R29E - North Brushy Draw Fed 35-8H - Wellbore #1 - Prelim Plan												Offset Site Error:	0.0ft
Survey Program: 0-MWD												Offset Well Error:	0.0ft
Reference	Offset	Semi Major Axis		Distance		Minimum Separation		Warning					
Measured Depth (ft)	Vertical Depth (ft)	Measured Depth (ft)	Vertical Depth (ft)	Reference (ft)	Offset (ft)	Highside Toolface (°)	Offset Wellbore Centre +N/-S (ft)	+E/-W (ft)	Between Centres (ft)	Between Ellipses (ft)	Minimum Separation (ft)	Separation Factor	Warning
0.0	0.0	0.0	0.0	0.0	0.0	-90.26	-0.1	-24.9	24.9				
100.0	100.0	100.0	100.0	0.1	0.1	-90.26	-0.1	-24.9	24.9	24.7	0.22	110.786	
200.0	200.0	200.0	200.0	0.3	0.3	-90.26	-0.1	-24.9	24.9	24.2	0.67	36.929	
300.0	300.0	300.0	300.0	0.6	0.6	-90.26	-0.1	-24.9	24.9	23.8	1.12	22.157	
400.0	400.0	400.0	400.0	0.8	0.8	-90.26	-0.1	-24.9	24.9	23.3	1.57	15.827	
500.0	500.0	500.0	500.0	1.0	1.0	-90.26	-0.1	-24.9	24.9	22.9	2.02	12.310	
600.0	600.0	600.0	600.0	1.2	1.2	-90.26	-0.1	-24.9	24.9	22.4	2.47	10.071	
700.0	700.0	700.0	700.0	1.5	1.5	-90.26	-0.1	-24.9	24.9	22.0	2.92	8.522	
800.0	800.0	800.0	800.0	1.7	1.7	-90.26	-0.1	-24.9	24.9	21.5	3.37	7.386	
900.0	900.0	900.0	900.0	1.9	1.9	-90.26	-0.1	-24.9	24.9	21.1	3.82	6.517	
1,000.0	1,000.0	1,000.0	1,000.0	2.1	2.1	-90.26	-0.1	-24.9	24.9	20.6	4.27	5.831	
1,100.0	1,100.0	1,100.0	1,100.0	2.4	2.4	-90.26	-0.1	-24.9	24.9	20.2	4.72	5.276	
1,200.0	1,200.0	1,200.0	1,200.0	2.6	2.6	-90.26	-0.1	-24.9	24.9	19.7	5.17	4.817	
1,300.0	1,300.0	1,300.0	1,300.0	2.8	2.8	-90.26	-0.1	-24.9	24.9	19.3	5.62	4.431	
1,400.0	1,400.0	1,400.0	1,400.0	3.0	3.0	-90.26	-0.1	-24.9	24.9	18.8	6.07	4.103	
1,500.0	1,500.0	1,500.0	1,500.0	3.3	3.3	-90.26	-0.1	-24.9	24.9	18.4	6.52	3.820	
1,600.0	1,600.0	1,600.0	1,600.0	3.5	3.5	-90.26	-0.1	-24.9	24.9	17.9	6.97	3.574	
1,700.0	1,700.0	1,700.0	1,700.0	3.7	3.7	-90.26	-0.1	-24.9	24.9	17.5	7.42	3.357	
1,800.0	1,800.0	1,800.0	1,800.0	3.9	3.9	-90.26	-0.1	-24.9	24.9	17.0	7.87	3.165	
1,900.0	1,900.0	1,900.0	1,900.0	4.2	4.2	-90.26	-0.1	-24.9	24.9	16.6	8.32	2.994	
2,000.0	2,000.0	2,000.0	2,000.0	4.4	4.4	-90.26	-0.1	-24.9	24.9	16.1	8.77	2.841	
2,100.0	2,100.0	2,100.0	2,100.0	4.6	4.6	-90.26	-0.1	-24.9	24.9	15.7	9.22	2.702	
2,200.0	2,200.0	2,200.0	2,200.0	4.8	4.8	-90.26	-0.1	-24.9	24.9	15.2	9.66	2.576	
2,300.0	2,300.0	2,300.0	2,300.0	5.1	5.1	-90.26	-0.1	-24.9	24.9	14.8	10.11	2.462	
2,400.0	2,400.0	2,400.0	2,400.0	5.3	5.3	-90.26	-0.1	-24.9	24.9	14.3	10.56	2.357	
2,500.0	2,500.0	2,500.0	2,500.0	5.5	5.5	-90.26	-0.1	-24.9	24.9	13.9	11.01	2.261	

CC - Min centre to center distance or covergent point, SF - min separation factor, ES - min ellipse separation

Wolverine Directional, LLC

Anticollision Report

Company:	RKI Exploration & Production	Local Co-ordinate Reference:	Well North Brushy Draw Fed 35-9H
Project:	Eddy County (NM83E)	TVD Reference:	WELL @ 0.0ft (Original Well Elev)
Reference Site:	Sec 35-T25S-R29E	MD Reference:	WELL @ 0.0ft (Original Well Elev)
Site Error:	0.0ft	North Reference:	True
Reference Well:	North Brushy Draw Fed 35-9H	Survey Calculation Method:	Minimum Curvature
Well Error:	0.0ft	Output errors are at	2.00 sigma
Reference Wellbore:	Wellbore #1	Database:	EDM 2003.21 Single User Db
Reference Design:	Prelim Plan	Offset TVD Reference:	Offset Datum

Offset Design: Sec 35-T25S-R29E - North Brushy Draw Fed 35-8H - Wellbore #1 - Prelim Plan													Offset Site Error:	0.0 ft
Survey Program: 0-MWD													Offset Well Error:	0.0 ft
Reference	Offset	Semi Major Axis		Distance		Minimum Separation		Separation Factor		Warning				
Measured Depth (ft)	Vertical Depth (ft)	Measured Depth (ft)	Vertical Depth (ft)	Reference (ft)	Offset (ft)	Highside Toolface (°)	Offset Wellbore Centre +N/-S (ft)	+E/-W (ft)	Between Centres (ft)	Between Ellipses (ft)	Minimum Separation (ft)	Separation Factor		
2,600.0	2,600.0	2,600.0	2,600.0	5.7	5.7	-90.26	-0.1	-24.9	24.9	13.4	11.46	2.172		
2,700.0	2,700.0	2,700.0	2,700.0	6.0	6.0	-90.26	-0.1	-24.9	24.9	13.0	11.91	2.090		
2,800.0	2,800.0	2,800.0	2,800.0	6.2	6.2	-90.26	-0.1	-24.9	24.9	12.5	12.36	2.014		
2,900.0	2,900.0	2,900.0	2,900.0	6.4	6.4	-90.26	-0.1	-24.9	24.9	12.1	12.81	1.944		
3,000.0	3,000.0	3,000.0	3,000.0	6.6	6.6	-90.26	-0.1	-24.9	24.9	11.6	13.26	1.878		
3,100.0	3,100.0	3,100.0	3,100.0	6.9	6.9	-90.26	-0.1	-24.9	24.9	11.2	13.71	1.816		
3,200.0	3,200.0	3,200.0	3,200.0	7.1	7.1	-90.26	-0.1	-24.9	24.9	10.7	14.16	1.759		
3,300.0	3,300.0	3,300.0	3,300.0	7.3	7.3	-90.26	-0.1	-24.9	24.9	10.3	14.61	1.704		
3,400.0	3,400.0	3,400.0	3,400.0	7.5	7.5	-90.26	-0.1	-24.9	24.9	9.8	15.06	1.654		
3,500.0	3,500.0	3,500.0	3,500.0	7.8	7.8	-90.26	-0.1	-24.9	24.9	9.4	15.51	1.606		
3,600.0	3,600.0	3,600.0	3,600.0	8.0	8.0	-90.26	-0.1	-24.9	24.9	8.9	15.96	1.560		
3,700.0	3,700.0	3,700.0	3,700.0	8.2	8.2	-90.26	-0.1	-24.9	24.9	8.5	16.41	1.518		
3,800.0	3,800.0	3,800.0	3,800.0	8.4	8.4	-90.26	-0.1	-24.9	24.9	8.0	16.86	1.477 Level 3		
3,900.0	3,900.0	3,900.0	3,900.0	8.7	8.7	-90.26	-0.1	-24.9	24.9	7.6	17.31	1.439 Level 3		
4,000.0	4,000.0	4,000.0	4,000.0	8.9	8.9	-90.26	-0.1	-24.9	24.9	7.1	17.76	1.402 Level 3		
4,100.0	4,100.0	4,100.0	4,100.0	9.1	9.1	-90.26	-0.1	-24.9	24.9	6.7	18.21	1.368 Level 3		
4,200.0	4,200.0	4,200.0	4,200.0	9.3	9.3	-90.26	-0.1	-24.9	24.9	6.2	18.66	1.335 Level 3		
4,300.0	4,300.0	4,300.0	4,300.0	9.6	9.6	-90.26	-0.1	-24.9	24.9	5.8	19.11	1.303 Level 3		
4,400.0	4,400.0	4,400.0	4,400.0	9.8	9.8	-90.26	-0.1	-24.9	24.9	5.3	19.55	1.273 Level 3		
4,500.0	4,500.0	4,500.0	4,500.0	10.0	10.0	-90.26	-0.1	-24.9	24.9	4.9	20.00	1.245 Level 2		
4,600.0	4,600.0	4,600.0	4,600.0	10.2	10.2	-90.26	-0.1	-24.9	24.9	4.4	20.45	1.217 Level 2		
4,700.0	4,700.0	4,700.0	4,700.0	10.5	10.5	-90.26	-0.1	-24.9	24.9	4.0	20.90	1.191 Level 2		
4,800.0	4,800.0	4,800.0	4,800.0	10.7	10.7	-90.26	-0.1	-24.9	24.9	3.5	21.35	1.166 Level 2		
4,900.0	4,900.0	4,900.0	4,900.0	10.9	10.9	-90.26	-0.1	-24.9	24.9	3.1	21.80	1.142 Level 2		
5,000.0	5,000.0	5,000.0	5,000.0	11.1	11.1	-90.26	-0.1	-24.9	24.9	2.6	22.25	1.119 Level 2		
5,100.0	5,100.0	5,100.0	5,100.0	11.4	11.4	-90.26	-0.1	-24.9	24.9	2.2	22.70	1.097 Level 2		
5,200.0	5,200.0	5,200.0	5,200.0	11.6	11.6	-90.26	-0.1	-24.9	24.9	1.7	23.15	1.076 Level 2		
5,300.0	5,300.0	5,300.0	5,300.0	11.8	11.8	-90.26	-0.1	-24.9	24.9	1.3	23.60	1.055 Level 2		
5,400.0	5,400.0	5,400.0	5,400.0	12.0	12.0	-90.26	-0.1	-24.9	24.9	0.9	24.05	1.035 Level 2		
5,500.0	5,500.0	5,500.0	5,500.0	12.2	12.2	-90.26	-0.1	-24.9	24.9	0.4	24.50	1.016 Level 2		
5,600.0	5,600.0	5,600.0	5,600.0	12.5	12.5	-90.26	-0.1	-24.9	24.9	0.0	24.95	0.998 Level 1		
5,700.0	5,700.0	5,700.0	5,700.0	12.7	12.7	-90.26	-0.1	-24.9	24.9	-0.5	25.40	0.980 Level 1		
5,800.0	5,800.0	5,800.0	5,800.0	12.9	12.9	-90.26	-0.1	-24.9	24.9	-0.9	25.85	0.963 Level 1		
5,900.0	5,900.0	5,900.0	5,900.0	13.1	13.1	-90.26	-0.1	-24.9	24.9	-1.4	26.30	0.947 Level 1		
6,000.0	6,000.0	6,000.0	6,000.0	13.4	13.4	-90.26	-0.1	-24.9	24.9	-1.8	26.75	0.931 Level 1		
6,100.0	6,100.0	6,100.0	6,100.0	13.6	13.6	-90.26	-0.1	-24.9	24.9	-2.3	27.20	0.916 Level 1		
6,200.0	6,200.0	6,200.0	6,200.0	13.8	13.8	-90.26	-0.1	-24.9	24.9	-2.7	27.65	0.901 Level 1		
6,300.0	6,300.0	6,300.0	6,300.0	14.0	14.0	-90.26	-0.1	-24.9	24.9	-3.2	28.10	0.886 Level 1		
6,400.0	6,400.0	6,400.0	6,400.0	14.3	14.3	-90.26	-0.1	-24.9	24.9	-3.6	28.55	0.872 Level 1		
6,500.0	6,500.0	6,500.0	6,500.0	14.5	14.5	-90.26	-0.1	-24.9	24.9	-4.1	28.99	0.859 Level 1		
6,600.0	6,600.0	6,600.0	6,600.0	14.7	14.7	-90.26	-0.1	-24.9	24.9	-4.5	29.44	0.846 Level 1		
6,700.0	6,700.0	6,700.0	6,700.0	14.9	14.9	-90.26	-0.1	-24.9	24.9	-5.0	29.89	0.833 Level 1		
6,800.0	6,800.0	6,800.0	6,800.0	15.2	15.2	-90.26	-0.1	-24.9	24.9	-5.4	30.34	0.821 Level 1		
6,900.0	6,900.0	6,900.0	6,900.0	15.4	15.4	-90.26	-0.1	-24.9	24.9	-5.9	30.79	0.809 Level 1		
7,000.0	7,000.0	7,000.0	7,000.0	15.6	15.6	-90.26	-0.1	-24.9	24.9	-6.3	31.24	0.797 Level 1		
7,100.0	7,100.0	7,100.0	7,100.0	15.8	15.8	-90.26	-0.1	-24.9	24.9	-6.8	31.69	0.786 Level 1, CC, ES, SF		
7,200.0	7,200.0	7,198.9	7,196.5	16.1	16.0	-101.98	-6.2	-29.1	29.9	-2.2	32.10	0.933 Level 1		
7,300.0	7,300.0	7,288.7	7,285.6	16.3	16.2	-120.19	-24.2	-41.5	50.2	17.7	32.48	1.544		
7,400.0	7,400.0	7,371.7	7,362.2	16.5	16.3	-130.17	-50.3	-59.6	86.7	53.8	32.85	2.638		
7,500.0	7,500.0	7,444.2	7,424.8	16.7	16.5	-135.00	-80.4	-80.4	136.3	103.1	33.20	4.106		
7,600.0	7,600.0	7,500.0	7,469.4	17.0	16.7	-137.34	-107.8	-99.3	196.3	162.8	33.52	5.857		
7,700.0	7,700.0	7,560.5	7,514.0	17.2	16.9	-139.08	-141.4	-122.6	263.9	230.0	33.83	7.798		

CC - Min centre to center distance or convergent point, SF - min separation factor, ES - min ellipse separation

Wolverine Directional, LLC

Anticollision Report

Company:	RKI Exploration & Production	Local Co-ordinate Reference:	Well North Brushy Draw Fed 35-9H
Project:	Eddy County (NM83E)	TVD Reference:	WELL @ 0.0ft (Original Well Elev)
Reference Site:	Sec 35-T25S-R29E	MD Reference:	WELL @ 0.0ft (Original Well Elev)
Site Error:	0.0ft	North Reference:	True
Reference Well:	North Brushy Draw Fed 35-9H	Survey Calculation Method:	Minimum Curvature
Well Error:	0.0ft	Output errors are at:	2.00 sigma
Reference Wellbore:	Wellbore #1	Database:	EDM 2003.21 Single User Db
Reference Design:	Prelim Plan	Offset TVD Reference:	Offset Datum

Offset Design: Sec 35-T25S-R29E North Brushy Draw Fed 35-8H - Wellbore #1 - Prelim Plan													Offset Site Error:
Survey Program: 0-MWD													0.0ft
Reference:													Offset Well Error:
Offset													0.0ft
Semi Major Axis													
Measured Depth	Vertical Depth	Measured Depth	Vertical Depth	Reference	Offset	Highside Toolface	Offset Wellbore Centre	Distance	Between Centres	Between Ellipses	Minimum Separation	Separation Factor	Warning
(ft)	(ft)	(ft)	(ft)	(ft)	(ft)	(°)	+N/-S (ft)	+E/-W (ft)	(ft)	(ft)	(ft)		
7,800.0	7,800.0	7,631.2	7,564.0	17.4	17.1	-140.40	-182.5	-151.0	334.4	300.2	34.16	9.790	
7,900.0	7,900.0	7,686.5	7,602.7	17.6	17.4	-141.24	-215.4	-173.0	405.9	371.4	34.46	11.779	
8,000.0	8,000.0	7,729.3	7,630.7	17.9	17.6	-142.17	-243.4	-189.0	480.9	446.2	34.75	13.842	
8,100.0	8,100.0	7,766.8	7,653.8	18.1	17.8	-143.16	-269.9	-202.2	559.3	524.2	35.02	15.968	
8,200.0	8,200.0	7,800.0	7,672.9	18.3	18.0	-144.13	-294.7	-213.1	640.4	605.1	35.30	18.143	
8,300.0	8,300.0	7,828.6	7,688.4	18.5	18.2	-145.01	-317.1	-222.0	723.8	688.2	35.56	20.355	
8,401.6	8,401.6	7,850.0	7,699.3	18.8	18.3	-145.68	-334.4	-228.2	810.7	774.8	35.82	22.634	
8,450.0	8,449.9	7,866.5	7,707.3	18.9	18.4	19.21	-348.1	-232.9	851.7	815.8	35.81	23.780	
8,500.0	8,499.5	7,879.9	7,713.6	19.0	18.5	16.81	-359.4	-236.5	892.3	856.6	35.68	25.007	
8,550.0	8,548.3	7,900.0	7,722.5	19.0	18.6	14.88	-376.6	-241.6	930.9	895.5	35.37	26.318	
8,600.0	8,596.1	7,900.0	7,722.5	19.1	18.6	13.57	-376.6	-241.6	967.5	932.6	34.86	27.753	
8,650.0	8,642.3	7,924.9	7,732.9	19.2	18.8	12.31	-398.5	-247.6	1,001.6	967.4	34.21	29.279	
8,700.0	8,686.7	7,950.0	7,742.4	19.3	19.0	11.28	-421.0	-253.2	1,033.6	1,000.2	33.40	30.943	
8,750.0	8,728.9	7,950.0	7,742.4	19.4	19.0	10.60	-421.0	-253.2	1,062.9	1,030.5	32.42	32.786	
8,800.0	8,768.7	7,975.3	7,751.2	19.5	19.2	9.89	-444.1	-258.3	1,089.6	1,058.2	31.35	34.750	
8,851.6	8,806.7	8,000.0	7,758.9	19.6	19.4	9.28	-487.2	-262.8	1,114.4	1,084.3	30.16	36.952	
8,900.0	8,841.0	8,000.0	7,758.9	19.8	19.4	9.28	-467.2	-262.8	1,136.9	1,106.6	30.23	37.604	
8,951.6	8,877.5	8,027.9	7,766.5	20.0	19.6	9.10	-493.7	-267.3	1,161.7	1,131.3	30.36	38.260	
9,000.0	8,910.2	8,050.0	7,771.7	20.1	19.8	9.09	-514.9	-270.4	1,184.5	1,155.2	29.27	40.468	
9,050.0	8,941.0	8,050.0	7,771.7	20.4	19.8	9.13	-514.9	-270.4	1,205.6	1,177.5	28.07	42.953	
9,100.0	8,968.2	8,078.9	7,777.5	20.6	20.1	9.02	-543.0	-273.9	1,223.9	1,197.0	26.93	45.447	
9,150.0	8,991.9	8,100.0	7,780.9	20.9	20.3	8.94	-563.7	-276.0	1,239.7	1,213.9	25.83	47.991	
9,200.0	9,011.7	8,100.0	7,780.9	21.2	20.3	8.90	-563.7	-276.0	1,253.0	1,228.2	24.78	50.558	
9,250.0	9,027.5	8,132.3	7,784.9	21.5	20.6	8.83	-595.6	-278.5	1,263.1	1,239.1	23.98	52.679	
9,300.0	9,039.2	8,150.0	7,786.4	21.9	20.7	8.79	-613.2	-279.5	1,270.6	1,247.2	23.34	54.438	
9,350.0	9,046.7	8,168.4	7,787.5	22.3	20.9	8.77	-631.6	-280.2	1,275.3	1,252.3	22.96	55.532	
9,400.0	9,050.0	8,200.0	7,788.1	22.7	21.2	8.78	-663.2	-280.8	1,277.3	1,254.4	22.93	55.713	
9,424.7	9,050.0	8,200.0	7,788.1	23.0	21.2	8.79	-663.2	-280.8	1,277.0	1,254.0	22.97	55.598	
9,500.0	9,048.6	8,251.6	7,787.3	23.7	21.7	8.79	-714.8	-280.8	1,276.4	1,253.0	23.36	54.631	
9,600.0	9,046.6	8,351.6	7,785.9	24.7	22.6	8.79	-814.8	-280.8	1,275.9	1,251.8	24.06	53.027	
9,700.0	9,044.7	8,451.6	7,784.4	25.8	23.7	8.80	-914.8	-280.8	1,275.4	1,250.6	24.84	51.356	
9,800.0	9,042.8	8,551.6	7,782.9	27.0	24.8	8.80	-1,014.7	-280.8	1,275.0	1,249.3	25.68	49.649	
9,900.0	9,040.8	8,651.6	7,781.5	28.3	26.0	8.80	-1,114.7	-280.8	1,274.5	1,247.9	26.59	47.936	
10,000.0	9,038.9	8,751.6	7,780.0	29.6	27.3	8.81	-1,214.7	-280.8	1,274.0	1,246.5	27.55	46.238	
10,100.0	9,037.0	8,851.6	7,778.5	31.0	28.6	8.81	-1,314.7	-280.8	1,273.6	1,245.0	28.57	44.574	
10,200.0	9,035.0	8,951.6	7,777.1	32.4	30.0	8.81	-1,414.7	-280.8	1,273.1	1,243.5	29.64	42.958	
10,300.0	9,033.1	9,051.6	7,775.6	33.8	31.5	8.82	-1,514.7	-280.8	1,272.6	1,241.9	30.74	41.397	
10,400.0	9,031.1	9,151.6	7,774.2	35.3	32.9	8.82	-1,614.7	-280.8	1,272.2	1,240.3	31.89	39.898	
10,500.0	9,029.2	9,251.6	7,772.7	36.8	34.5	8.82	-1,714.7	-280.8	1,271.7	1,238.6	33.06	38.464	
10,600.0	9,027.3	9,351.6	7,771.2	38.4	36.0	8.83	-1,814.7	-280.8	1,271.2	1,236.9	34.27	37.095	
10,700.0	9,025.3	9,451.6	7,769.8	40.0	37.6	8.83	-1,914.7	-280.8	1,270.7	1,235.2	35.50	35.793	
10,800.0	9,023.4	9,551.6	7,768.3	41.6	39.2	8.83	-2,014.7	-280.8	1,270.3	1,233.5	36.76	34.555	
10,900.0	9,021.4	9,651.6	7,766.8	43.2	40.9	8.84	-2,114.7	-280.8	1,269.8	1,231.8	38.04	33.380	
11,000.0	9,019.5	9,751.6	7,765.4	44.8	42.5	8.84	-2,214.7	-280.8	1,269.3	1,230.0	39.34	32.264	
11,100.0	9,017.6	9,851.7	7,763.9	46.4	44.2	8.84	-2,314.6	-280.8	1,268.9	1,228.2	40.66	31.207	
11,200.0	9,015.6	9,951.7	7,762.5	48.1	45.9	8.85	-2,414.6	-280.8	1,268.4	1,226.4	41.99	30.204	
11,300.0	9,013.7	10,051.7	7,761.0	49.8	47.5	8.85	-2,514.6	-280.8	1,267.9	1,224.6	43.34	29.253	
11,400.0	9,011.7	10,151.7	7,759.5	51.4	49.3	8.85	-2,614.6	-280.8	1,267.4	1,222.7	44.71	28.350	
11,500.0	9,009.8	10,251.7	7,758.1	53.1	51.0	8.86	-2,714.6	-280.8	1,266.9	1,220.9	46.08	27.494	
11,600.0	9,007.8	10,351.7	7,756.6	54.8	52.7	8.86	-2,814.6	-280.8	1,266.5	1,219.0	47.47	26.681	
11,700.0	9,005.9	10,451.7	7,755.2	56.5	54.4	8.86	-2,914.6	-280.8	1,266.0	1,217.1	48.86	25.908	
11,800.0	9,004.0	10,551.7	7,753.7	58.2	56.2	8.87	-3,014.6	-280.8	1,265.5	1,215.2	50.27	25.174	

CC - Min centre to center distance or convergent point, SF - min separation factor, ES - min ellipse separation

Wolverine Directional, LLC

Anticollision Report

Company:	RKI Exploration & Production	Local Co-ordinate Reference:	Well North Brushy Draw Fed 35-9H
Project:	Eddy County (NM83E)	TVD Reference:	WELL @ 0.0ft (Original Well Elev)
Reference Site:	Sec 35-T25S-R29E	MD Reference:	WELL @ 0.0ft (Original Well Elev)
Site Error:	0.0ft	North Reference:	True
Reference Well:	North Brushy Draw Fed 35-9H	Survey Calculation Method:	Minimum Curvature
Well Error:	0.0ft	Output errors are at	2.00 sigma
Reference Wellbore	Wellbore #1	Database:	EDM 2003.21 Single User Db
Reference Design:	Prelim Plan	Offset TVD Reference:	Offset Datum

Offset Design													Sec 35-T25S-R29E - North Brushy Draw Fed 35-8H - Wellbore #1 - Prelim Plan		Offset Site Error: 0.0 ft	
Survey Program: 0-MWD													Offset Well Error: 0.0 ft			
Reference		Offset		Semi Major Axis		Highside Toolface (°)	Distance						Warning			
Measured Depth (ft)	Vertical Depth (ft)	Measured Depth (ft)	Vertical Depth (ft)	Reference (ft)	Offset (ft)		Offset Wellbore Centre +N/-S (ft)	+E/-W (ft)	Between Centres (ft)	Between Ellipses (ft)	Minimum Separation (ft)	Separation Factor				
11,900.0	8,002.0	10,651.7	7,752.2	60.0	57.9	8.87	-3,114.6	-280.8	1,265.0	1,213.4	51.69	24.476				
12,000.0	8,000.1	10,751.7	7,750.8	61.7	59.7	8.87	-3,214.6	-280.8	1,264.6	1,211.4	53.11	23.811				
12,100.0	8,998.1	10,851.7	7,749.3	63.4	61.5	8.88	-3,314.6	-280.8	1,264.1	1,209.5	54.54	23.177				
12,200.0	8,996.2	10,951.7	7,747.9	65.1	63.2	8.88	-3,414.6	-280.8	1,263.6	1,207.6	55.98	22.574				
12,300.0	8,994.2	11,051.7	7,746.4	66.9	65.0	8.88	-3,514.5	-280.8	1,263.1	1,205.7	57.42	21.998				
12,400.0	8,992.3	11,151.7	7,744.9	68.6	66.8	8.89	-3,614.5	-280.8	1,262.6	1,203.8	58.87	21.448				
12,500.0	8,990.3	11,251.7	7,743.5	70.4	68.6	8.89	-3,714.5	-280.8	1,262.2	1,201.8	60.33	20.922				
12,600.0	8,988.4	11,351.7	7,742.0	72.1	70.3	8.89	-3,814.5	-280.8	1,261.7	1,199.9	61.79	20.420				
12,700.0	8,986.5	11,451.7	7,740.6	73.9	72.1	8.90	-3,914.5	-280.8	1,261.2	1,197.9	63.25	19.939				
12,800.0	8,984.5	11,551.7	7,739.1	75.6	73.9	8.90	-4,014.5	-280.7	1,260.7	1,196.0	64.72	19.479				
12,900.0	8,982.6	11,651.7	7,737.7	77.4	75.7	8.90	-4,114.5	-280.7	1,260.2	1,194.0	66.20	19.038				
13,000.0	8,980.6	11,751.7	7,736.2	79.2	77.5	8.91	-4,214.5	-280.7	1,259.7	1,192.1	67.67	18.615				
13,100.0	8,978.7	11,851.7	7,734.7	80.9	79.3	8.91	-4,314.5	-280.7	1,259.3	1,190.1	69.15	18.209				
13,200.0	8,976.7	11,951.7	7,733.3	82.7	81.1	8.91	-4,414.5	-280.7	1,258.8	1,188.1	70.64	17.819				
13,300.0	8,974.8	12,051.7	7,731.8	84.5	82.9	8.92	-4,514.5	-280.7	1,258.3	1,186.2	72.13	17.445				
13,400.0	8,972.8	12,151.7	7,730.4	86.3	84.7	8.92	-4,614.5	-280.7	1,257.8	1,184.2	73.62	17.085				
13,500.0	8,970.9	12,251.7	7,728.9	88.0	86.6	8.92	-4,714.5	-280.7	1,257.3	1,182.2	75.11	16.739				
13,545.2	8,970.0	12,296.9	7,728.3	88.8	87.4	8.92	-4,759.7	-280.7	1,257.1	1,181.3	75.79	16.586				

CC - Min centre to center distance or convergent point, SF - min separation factor, ES - min ellipse separation

Wolverine Directional, LLC

Anticollision Report

Company:	RKI Exploration & Production	Local Co-ordinate Reference:	Well North Brushy Draw Fed 35-9H
Project:	Eddy County (NM83E)	TVD Reference:	WELL @ 0.0ft (Original Well Elev)
Reference Site:	Sec 35-T25S-R29E	MD Reference:	WELL @ 0.0ft (Original Well Elev)
Site Error:	0.0ft	North Reference:	True
Reference Well:	North Brushy Draw Fed 35-9H	Survey Calculation Method:	Minimum Curvature
Well Error:	0.0ft	Output errors are at	2.00 sigma
Reference Wellbore:	Wellbore #1	Database:	EDM 2003.21 Single User Db
Reference Design:	Prelim Plan	Offset TVD Reference:	Offset Datum

Reference Depths are relative to WELL @ 0.0ft (Original Well Elev)

Offset Depths are relative to Offset Datum

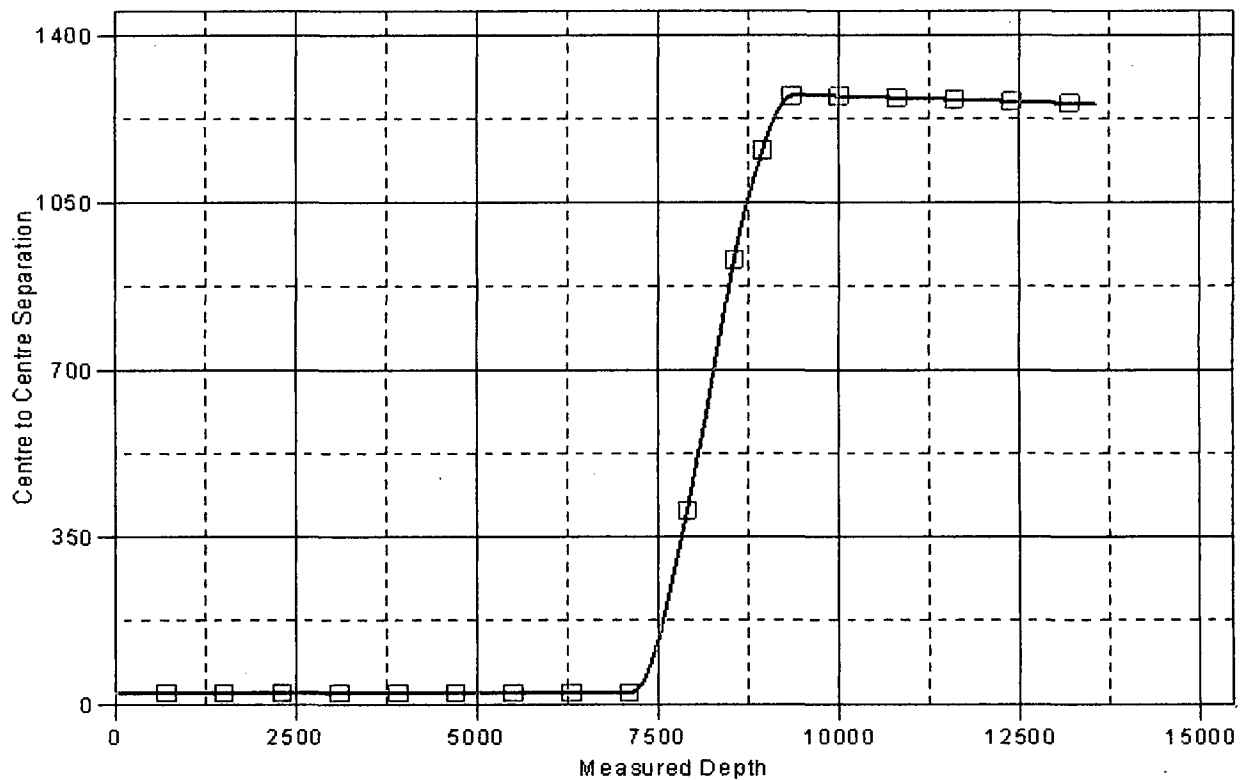
Central Meridian is 104° 20' 0.000 W °

Coordinates are relative to: North Brushy Draw Fed 35-9H

Coordinate System is US State Plane 1983, New Mexico Eastern Zone

Grid Convergence at Surface is: 0.21°

Ladder Plot



LEGEND

North Brushy Draw Fed 35-8 H, Wellbore #1, Prelim Plan V0

CC - Min centre to center distance or convergent point, SF - min separation factor, ES - min ellipse separation

Wolverine Directional, LLC

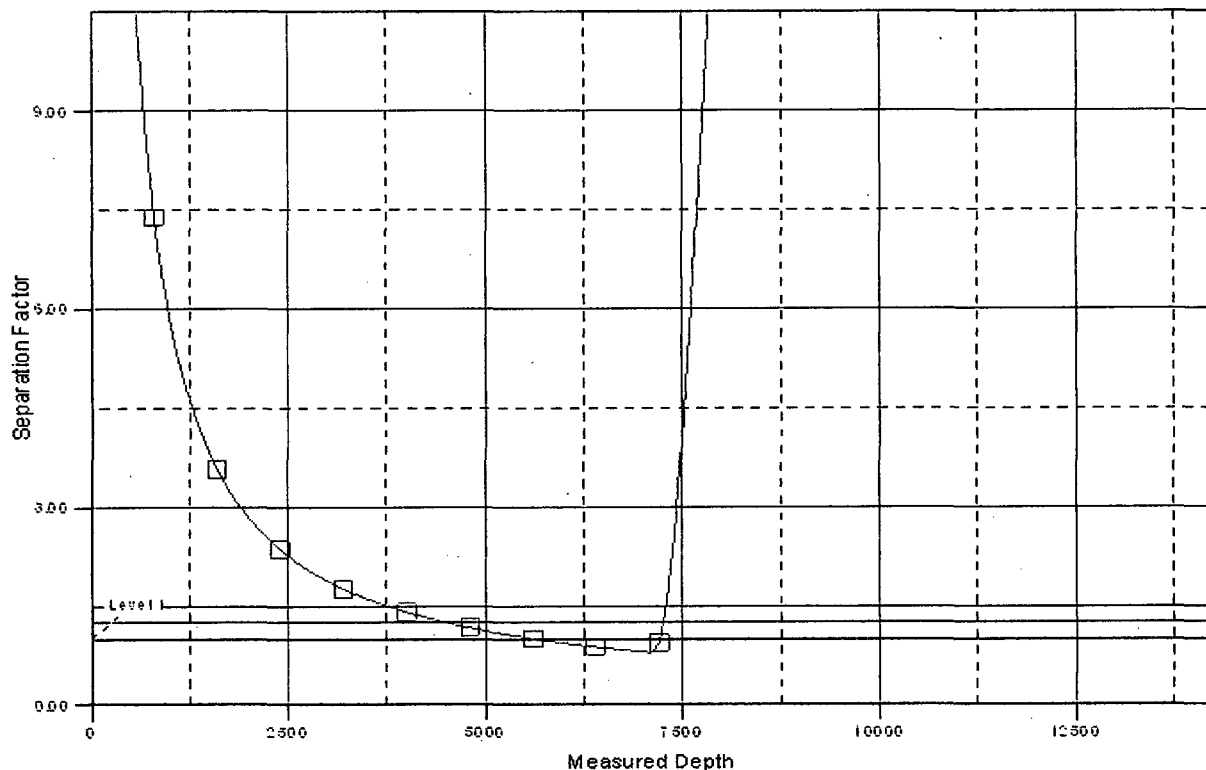
Anticollision Report

Company:	RKI Exploration & Production	Local Co-ordinate Reference:	Well North Brushy Draw Fed 35-9H
Project:	Eddy County (NM83E)	TVD Reference:	WELL @ 0.0ft (Original Well Elev)
Reference Site:	Sec 35-T25S-R29E	MD Reference:	WELL @ 0.0ft (Original Well Elev)
Site Error:	0.0ft	North Reference:	True
Reference Well:	North Brushy Draw Fed 35-9H	Survey Calculation Method:	Minimum Curvature
Well Error:	0.0ft	Output errors are at	2.00 sigma
Reference Wellbore	Wellbore #1	Database:	EDM 2003.21 Single User Db
Reference Design:	Prelim Plan	Offset TVD Reference:	Offset Datum

Reference Depths are relative to WELL @ 0.0ft (Original Well Elev)
 Offset Depths are relative to Offset Datum
 Central Meridian is 104° 20' 0.000 W °

Coordinates are relative to: North Brushy Draw Fed 35-9H
 Coordinate System is US State Plane 1983, New Mexico Eastern Zone
 Grid Convergence at Surface is: 0.21°

Separation Factor Plot

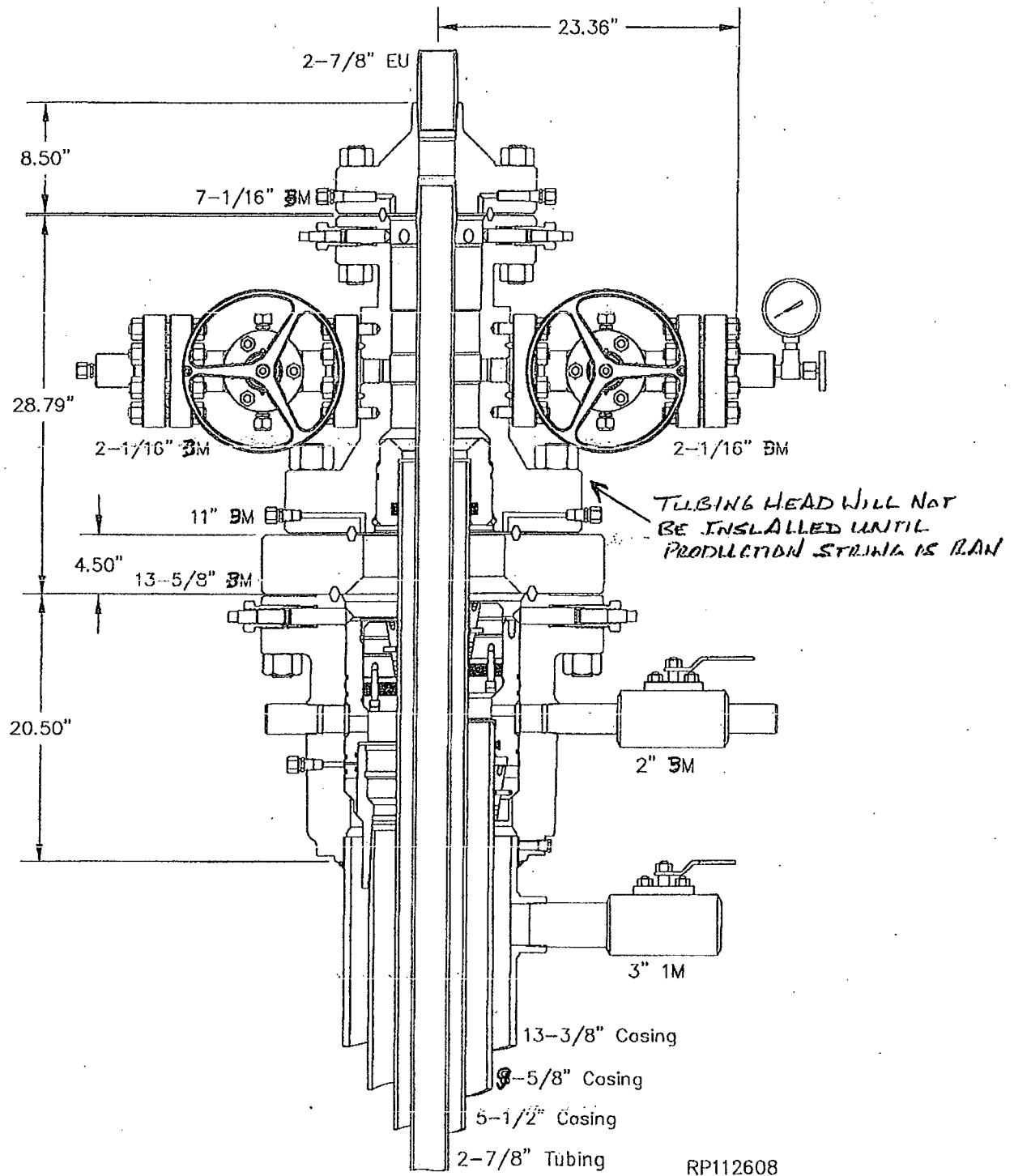


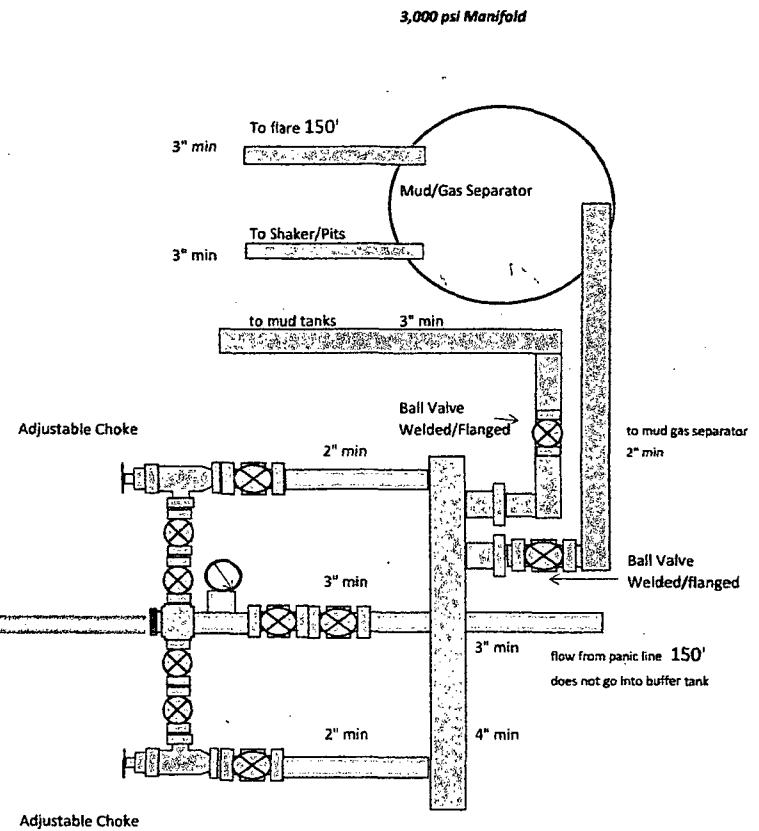
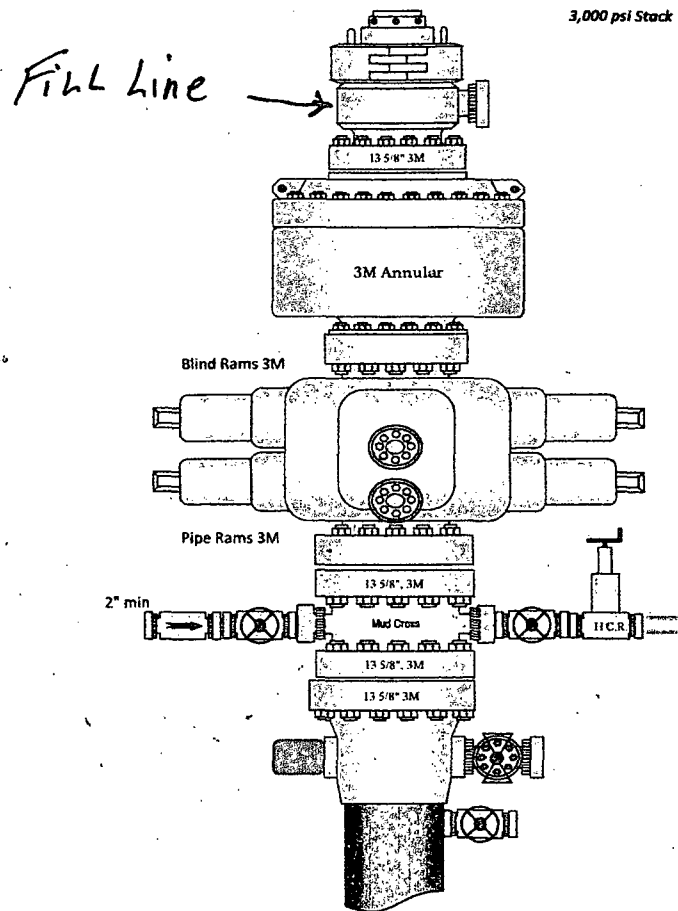
LEGEND

North Brushy Draw Fed 35-8 H, Wellbore #1, Prelim Plan V0

GE Oil & Gas multi-bowl wellhead

System Drawing





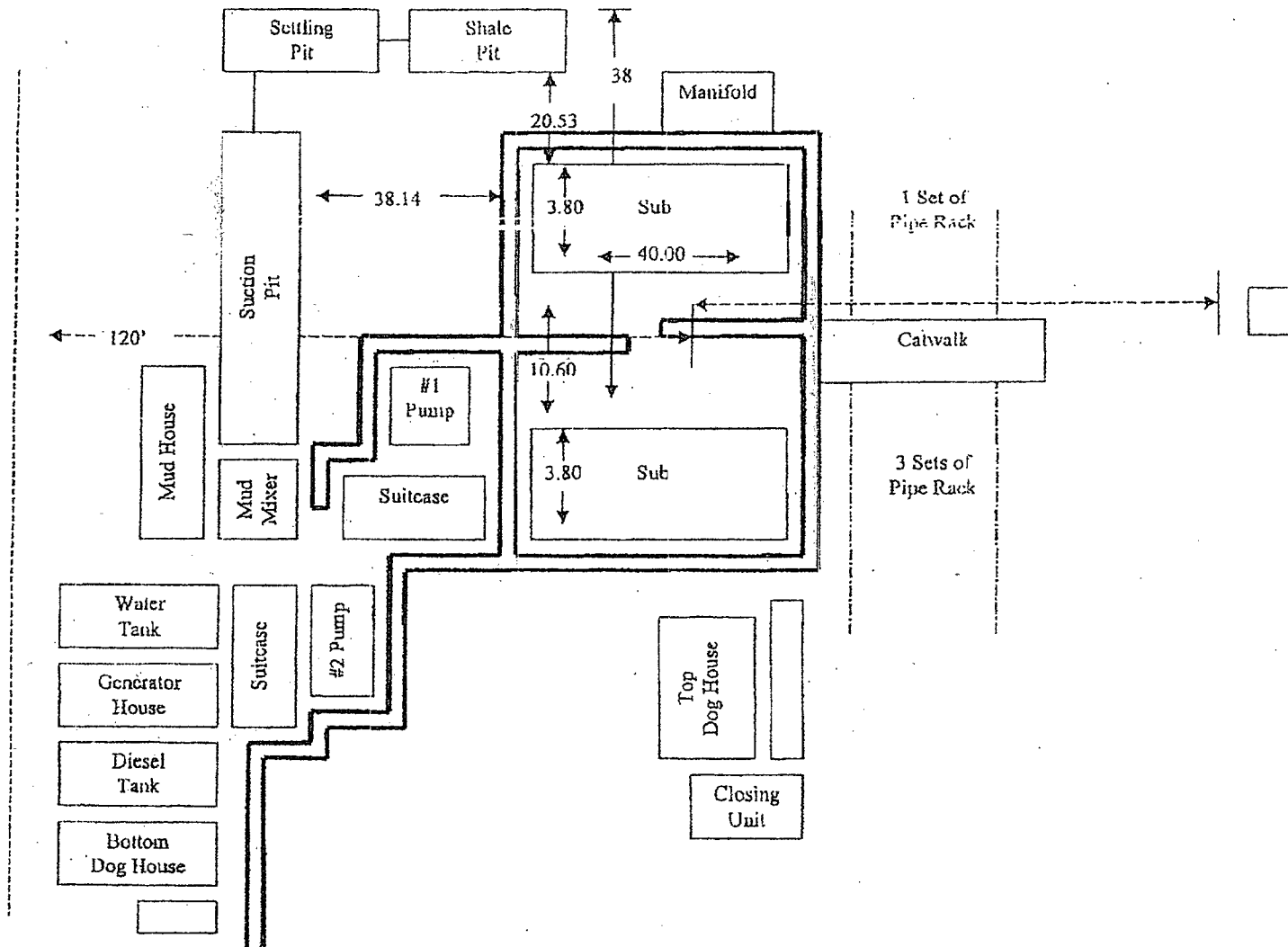


EXHIBIT D

Rig Plat Only
NORTH BRUSHY DRAW FEDERAL 35-8H & 35-9H
V-DOOR EAST

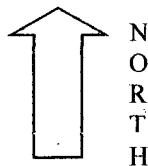
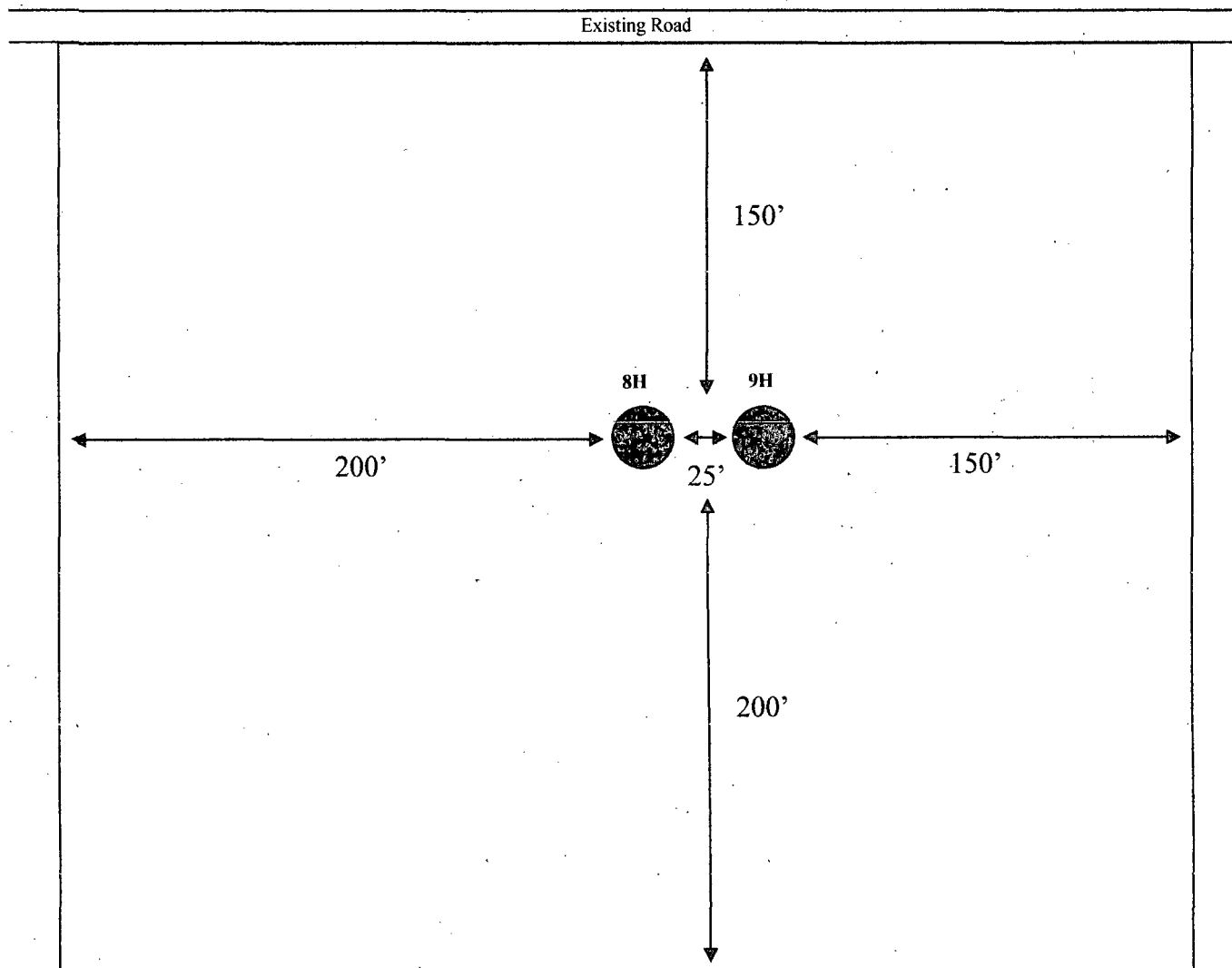
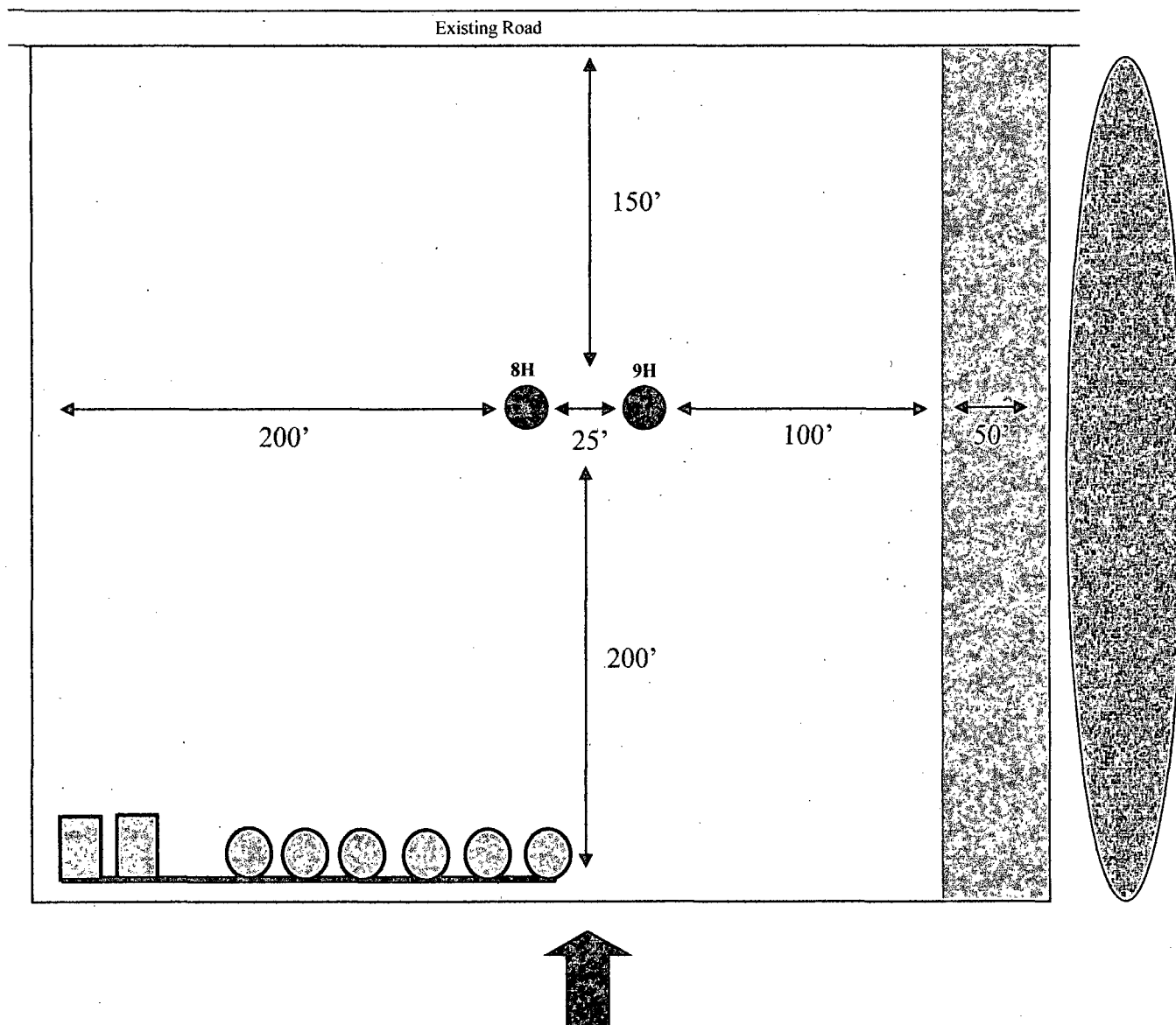


EXHIBIT C

Interim Reclamation & Production Facilities NORTH BRUSHY DRAW FEDERAL 35-8H & 35-9H V-DOOR EAST



LEGEND



Well Bore



Topsoil



Interim Reclamation



Production Facilities



Berm



NORTH

SURFACE USE PLAN

RKI Exploration & Production, LLC
North Brushy Draw Federal 35-9H
Surface Hole: 300 FNL & 260 FEL
Bottom Hole: 230 FSL & 350 FEL
Section 35, T. 25 S., R. 29 E
Eddy County, New Mexico

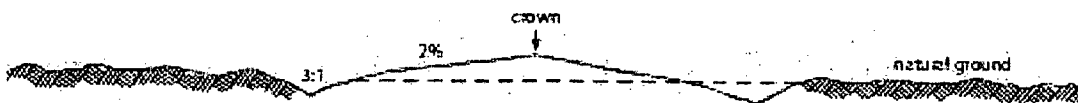
This plan is submitted with form 3160-3, Application for Permit to Drill, covering the above described well. The purpose of this plan is to describe the location of the proposed well, the proposed construction activities and operations plan, the magnitude of the surface disturbance involved and the procedures to be followed in rehabilitating the surface after completion of the operations, so that a complete appraisal can be made of the environmental effect associated with the operations.

1. EXISTING ROADS:

- A. DIRECTIONS: Go south of Carlsbad, NM, on Highway 285, for 30 miles. Turn east onto the Longhorn road (County Road 725) for 4.3 miles. Turn northeast off C. R. 725 on El Paso Natural Gas pipeline lease road for 3.7 miles. Turn south on lease road for 0.2 mile to the NBD Federal 35-1H. Turn east for 0.3 mile to location. All existing roads are either paved or a caliche lease road.
- B. See attached plats and maps provided by WTC Surveys.
- C. The access routes from Eddy County Road 725 to the well location is depicted on **Exhibit A**. The route highlighted in red has been authorized under a ROW permit.
- D. Existing roads on the access route will be improved and maintained to the standard set forth in Section 2 of this Surface Use Plan of Operations.

2. NEW OR RECONSTRUCTED ACCESS ROADS:

- A. No access road will be required. The location is adjacent to the east/west existing lease road.
- B. The maximum width of the driving surface will be 14 feet. The road will be crowned and ditched with a 2% slope from the tip of the crown to the edge of the driving surface. The ditches will be 1 foot deep with 3:1 slopes. The driving surface will be made of 6" rolled and compacted caliche.



Level Ground Section

- C. Surface material will be native caliche. The average grade of the entire road will be approximately 3%.
- D. Fence Cuts: No
- E. Cattle guards: No
- F. Turnouts: No
- G. Culverts: No

H. Cuts and Fills: Not significant

- I. Approximately 6 inches of topsoil (root zone) will be stripped from the proposed access road prior to any further construction activity. The topsoil that was stripped will be spread along the edge of the road and within the ditch. The topsoil will be seeded with the proper seed mix designated by the BLM.
- J. The access road will be constructed and maintained as necessary to prevent soil erosion and accommodate all-weather traffic. The road will be crowned and ditched with water turnouts installed as necessary to provide for proper drainage along the access road route.
- K. The access road and associated drainage structures will be constructed and maintained in accordance with road guidelines contained in the joint BLM/USFS publication: Surface Operating Standards for Oil and Gas Exploration and Development, The Gold Book, Fourth Edition and/or BLM Manual Section 9113 concerning road construction standards on projects subject to federal jurisdiction.

3. LOCATION OF EXISTING WELLS:

See attached map (**Exhibit B**) showing all wells within a one-mile radius.

4. LOCATION OF EXISTING AND/OR PROPOSED FACILITIES:

- A. In the event the well is found productive a battery will be placed on the south portion of the pad (**SEE EXHIBIT C**). There is power at the 35-2H and the line is on west edge of this location, which will tie-in this well. A 6" buried, steel, gas pipeline, of 250 psi, will be laid about 50 ft. to the existing gas line to the north. A 4", surface poly, SWD line of 90 psi, will be laid to the existing line at the 35-2H battery to the west. Both lines will be about 50 ft. in length. (**SEE EXHIBIT E**).
- B. All permanent (on site six months or longer) aboveground structures constructed or installed on location and not subject to safety requirements will be painted to BLM specifications.
- C. Containment berms will be constructed completely around production facilities designed to hold fluids. The containment berms will be constructed or compacted subsoil, be sufficiently impervious, hold 1 ½ times the capacity of the largest tank and away from cut or fill areas.

5. LOCATION AND TYPE OF WATER SUPPLY:

The well will be drilled using a combination of water mud systems as outlined in the Drilling Program. The water will be obtained from commercial water stations in the area and hauled to the location by transport truck using the existing and proposed roads shown in the attached survey plats. If a commercial water well is nearby, a temporary, surface poly line, will be laid along existing roads or other ROW easements and the water pumped to the well. No water well will be drilled on the location.

6. SOURCE OF CONSTRUCTION MATERIALS:

Any construction material that may be required for surfacing of the drill pad and access road will be from a contractor having a permitted source of materials within the general area. No construction materials will be removed from Federal lands without prior approval from the appropriate surface management agency. All roads will be constructed of 6" rolled and compacted caliche.

7. METHODS OF HANDLING WASTE DISPOSAL:

- A. The well will be drilled utilizing a closed loop mud system. Drill cuttings will be held in roll-off style mud boxes and taken to an NMOCD approved disposal site.
- B. Drilling fluids will be contained in steel mud pits.
- C. Water produced from the well during completion will be held temporarily in steel tanks and then taken to an NMOCD approved commercial disposal facility.
- D. Oil produced during operations will be stored in tanks until sold.
- E. Portable, self-contained chemical toilets will be provided for human waste disposal. Upon completion of operations, or as required, the toilet holding tanks will be pumped and the contents thereof disposed of in an approved sewage disposal facility. All state and local laws and regulations pertaining to disposal of human and solid waste will be complied with. This equipment will be properly maintained during the drilling and completion operations and will be removed when all operations are complete.
- F. All trash, junk, and other waste materials will be contained in trash cages or bins to prevent scattering and will be removed and deposited in an approved sanitary landfill. Immediately after drilling all debris and other waste materials on and around the well location, not contained in the trash cage will be cleaned up and removed from the location. No potentially adverse materials or substances will be left on the location.

8. ANCILLARY FACILITIES:

No campsite, airstrip, or other facilities will be built as a result of the operation of this well. No staging areas are needed.

9. WELL SITE LAYOUT:

- A. **Exhibit D** shows the dimensions of the proposed well pad.
- B. The proposed, 2 well pad location, (with the 35-8H 25 ft. west of the 35-9H), well pad size will be 350' x 375' (**See Exhibit D**). There will be no reserve pit due to the well being drilled utilizing a closed loop mud system. The closed loop system will meet the NMOCD requirements 19.15.17.
- C. The WTC Surveyor's plat, Form C-102 and **Exhibit D**, shows how the well will be turned to a V-Door East.
- D. A 600' x 600' area has been staked and flagged.
- E. All equipment and vehicles will be confined to the approved disturbed areas of this APD (i.e., access road, well pad, and topsoil storage areas)

10. PLANS FOR SURFACE RECLAMATION:

- A. After concluding the drilling and/or completion operations, if the well is found non-commercial, all the equipment will be removed, the surface material, caliche, will be removed from the well pad and road and transported to the original caliche pit or used for other roads. The original stock piled top soil will be returned to the pad and contoured, as close as possible, to the original topography. The access road will have the caliche removed and the road ripped, barricaded and seeded as directed by the BLM.
- B. If the well is a producer, the portions of the location not essential to production facilities or space required for workover operations, will be reclaimed and seeded as per BLM requirements.
(SEE EXHIBIT C FOR INTERIM RECLAMATION PLAT FOR THIS WELL)
- C. Reclamation Performance Standards
The following reclamation performance standards will be met:

Interim Reclamation – Includes disturbed areas that may be redisturbed during operations and will be redisturbed at final reclamation to achieve restoration of the original landform and a natural vegetative community.

- Disturbed areas not needed for active, long-term production operations or vehicle travel will be recontoured, protected from erosion, and revegetated with a self-sustaining, vigorous, diverse, native (or as otherwise approved) plant community sufficient to minimize visual impacts, provide forage, stabilize soils, and impede the invasion of noxious, invasive, and non-native weeds.

Final Reclamation – Includes disturbed areas where the original landform and a natural vegetative community will be restored and it is anticipated the site will not be redisturbed for future development.

- The original landform will be restored for all disturbed areas including well pads, production facilities, roads, pipelines, and utility corridors.
- A self-sustaining, vigorous, diverse, native (or otherwise approved) plant community will be established on the site, with a density sufficient to control erosion and invasion by non-native plants and to re-establish wildlife habitat or forage production. At a minimum, the established plant community will consist of species included in the seed mix and/or desirable species occurring in the surrounding natural vegetation.
- Erosion features are equal to or less than surrounding area and erosion control is sufficient so that water naturally infiltrates into the soil and gully, headcutting, slumping, and deep or excessive rills (greater than 3 inches) are not observed.
- The site will be free of State- or county-listed noxious weeds, oil field debris and equipment, and contaminated soil. Invasive and non-native weeds are controlled.

D. Reclamation Actions

Earthwork for interim and final reclamation will be completed within 6 months of well completion or plugging unless a delay is approved in writing by the BLM authorized officer.

The following minimum reclamation actions will be taken to ensure that the reclamation objectives and standards are met. It may be necessary to take additional reclamation actions beyond the minimum in order to achieve the Reclamation Standards.

Reclamation – General

Notification:

- The BLM will be notified at least 3 days prior to commencement of any reclamation operations.

Housekeeping:

- Within 30 days of well completion, the well location and surrounding areas(s) will be cleared of, and maintained free of, all debris, materials, trash, and equipment not required for production.
- No hazardous substances, trash, or litter will be buried or placed in pits.

Topsoil Management:

- Operations will disturb the minimum amount of surface area necessary to conduct safe and efficient operations.
- Topsoil depth is defined as the top layer of soil that contains 80% of the roots. In areas to be heavily disturbed, the topsoil will be stripped and stockpiled around the perimeter of the well location and along the perimeter of the access road to control run-on and run-off, to keep topsoil viable, and to make redistribution of topsoil more efficient during interim reclamation. Stockpiled topsoil will include vegetative material. Topsoil will be clearly segregated and stored separately from subsoils.
- Salvaging and spreading topsoil will not be performed when the ground or topsoil is frozen or too wet to adequately support construction equipment or so dry that dust clouds greater than 30 feet tall are created. If such equipment creates ruts in excess of four (4) inches deep, the soil will be deemed too wet.
- No major depressions will be left that would trap water and cause ponding unless the intended purpose is to trap runoff and sediment.

Seeding:

- Seedbed Preparation. Initial seedbed preparation will consist of recontouring to the appropriate interim or final reclamation standard. All compacted areas to be seeded will be ripped to a minimum depth of 18 inches with a minimum furrow spacing of 2 feet, followed by recontouring the surface and then evenly spreading the stockpiled topsoil. Prior to seeding, the seedbed will be scarified to a depth of no less than 4 – 6 inches. If the site is to be broadcast seeded, the surface will be left rough enough to trap seed and snow, control erosion, and increase water infiltration.
- If broadcast seeding is to be used and is delayed, final seedbed preparation will consist of contour cultivating to a depth of 4 to 6 inches within 24 hours prior to seeding, dozer tracking, or other imprinting in order to break the soil crust and create seed germination micro-sites.
- Seed Application. Seeding will be conducted no more than two weeks following completion of final seedbed preparation. A certified weed-free seed mix designed by the BLM to meet reclamation standards will be used.
- If the site is harrowed or dragged, seed will be covered by no more than 0.25 inch of soil.

11. SURFACE OWNERSHIP:

- A. The surface is owned by the U. S. Government and administered by the Bureau of Land Management. The surface is multiple use with the primary uses of the region for the grazing of livestock and the production of oil and gas.

12. OTHER INFORMATION:

- A. The area surrounding the well site is in a very flat, shallow sandy loam, within a rolling hills type area. The vegetation consists of Mesquite, Yucca, Sand Sage with three-awns and some dropseed species.
- B. There is no permanent or live water in the immediate area.
- C. There are no dwellings within 2 miles of this location.
- D. RKI is a participant with the Permian Basin MOA and a check for \$1507 is attached with this application.

13. BOND COVERAGE:

Bond Coverage is Nationwide; Bond Number NMB-000460.

OPERATORS REPRESENTATIVE:

The RKI Exploration and Production, LLC representatives responsible for ensuring compliance of the surface use plan are listed below:

Surface:

Barry W. Hunt – Permitting Agent
1403 Springs Farm Place
Carlsbad, NM 88220
(575) 885-1417 (Home)
(575) 361-4078 (Cell)

Drilling & Production:

Ken Fairchild – RKI Exploration and Production, LLC.
210 Park Avenue, Suite 900
Oklahoma City, Ok. 73102
(405) 996-5764 (Office)
(469) 693-6051 (Cell)

ON-SITE PERFORMED ON 12/5/13 RESULTED IN PROPOSED LOCATION BEING MOVED 125 FT. SOUTH. DUE TO PIPELINES, AND MOVED 225 FT. EAST DUE TO POWER LINE AND THE 35-2H FACILITIES. IT WAS AGREED TO TURN THE LOCATION TO A V-DOOR EAST. BATTERY WILL BE ON THE SOUTH SIDE AND TOP SOIL TO THE EAST. INTERIM RECLAMATION WOULD BE THE EAST PORTION OF PAD.

PRESENT AT ON-SITE:

BARRY HUNT – PERMIT AGENT FOR RKI EXPLORATION & PRODUCTION
INDRA DAHAL – BLM
WTC SURVEYORS
BECKIE HILL - BOONE ARCHAEOLOGICAL SERVICES

RKI Exploration & Production LLC

3817 NW Expressway, Suite 950, Oklahoma City, OK 73112
405-949-2221 Fax 405-949-2223

June 25th, 2012

To Whom It May Concern:

Please be advised that Mr. Barry Hunt has been retained by RKI Exploration & Production to sign as our agent on Application for Permit to Drill (APD) as well as Right of Way applications within the States of New Mexico and Texas.

If you have any questions or require additional information, please feel free to contact me at (405) 996-5771.

Sincerely,



Charles K. Ahn
EH&S/Regulatory Manager

PECOS DISTRICT

CONDITIONS OF APPROVAL

OPERATOR'S NAME:	RKI EXPLORATION & PRODUCTION LLC - Hunt, Barry
LEASE NO.:	NM54290
WELL NAME & NO.:	North Brushy Draw Federal 35 - 9H
SURFACE HOLE FOOTAGE:	[300] ' F [N] L [260] ' F [E] L
BOTTOM HOLE FOOTAGE:	[230] ' F [S] L [350] ' F [E] L
LOCATION:	Section 035, T025. S., R 029 E., NMPM
COUNTY:	Eddy County, New Mexico

TABLE OF CONTENTS

Standard Conditions of Approval (COA) apply to this APD. If any deviations to these standards exist or special COAs are required, the section with the deviation or requirement will be checked below.

- ☐ **General Provisions**
- ☐ **Permit Expiration**
- ☐ **Archaeology, Paleontology, and Historical Sites**
- ☐ **Noxious Weeds**
- ☒ **Special Requirements**
 - Cave/Karst
- ☐ **Construction**
 - Notification
 - Topsoil
 - Closed Loop System
 - Federal Mineral Material Pits
 - Well Pads
 - Roads
- ☐ **Road Section Diagram**
- ☒ **Drilling**
 - Cement Requirements
 - High Cave/Karst
 - Logging Requirements
 - Waste Material and Fluids
- ☒ **Production (Post Drilling)**
 - Well Structures & Facilities
 - Pipelines
- ☐ **Interim Reclamation**
- ☐ **Final Abandonment & Reclamation**

I. GENERAL PROVISIONS

The approval of the Application For Permit To Drill (APD) is in compliance with all applicable laws and regulations: 43 Code of Federal Regulations 3160, the lease terms, Onshore Oil and Gas Orders, Notices To Lessees, New Mexico Oil Conservation Division (NMOCD) Rules, National Historical Preservation Act As Amended, and instructions and orders of the Authorized Officer. Any request for a variance shall be submitted to the Authorized Officer on Form 3160-5, Sundry Notices and Report on Wells.

II. PERMIT EXPIRATION

If the permit terminates prior to drilling and drilling cannot be commenced within 60 days after expiration, an operator is required to submit Form 3160-5, Sundry Notices and Reports on Wells, requesting surface reclamation requirements for any surface disturbance. However, if the operator will be able to initiate drilling within 60 days after the expiration of the permit, the operator must have set the conductor pipe in order to allow for an extension of 60 days beyond the expiration date of the APD. (Filing of a Sundry Notice is required for this 60 day extension.)

III. ARCHAEOLOGICAL, PALEONTOLOGY & HISTORICAL SITES

Any cultural and/or paleontological resource discovered by the operator or by any person working on the operator's behalf shall immediately report such findings to the Authorized Officer. The operator is fully accountable for the actions of their contractors and subcontractors. The operator shall suspend all operations in the immediate area of such discovery until written authorization to proceed is issued by the Authorized Officer. An evaluation of the discovery shall be made by the Authorized Officer to determine the appropriate actions that shall be required to prevent the loss of significant cultural or scientific values of the discovery. The operator shall be held responsible for the cost of the proper mitigation measures that the Authorized Officer assesses after consultation with the operator on the evaluation and decisions of the discovery. Any unauthorized collection or disturbance of cultural or paleontological resources may result in a shutdown order by the Authorized Officer.

IV. NOXIOUS WEEDS

The operator shall be held responsible if noxious weeds become established within the areas of operations. Weed control shall be required on the disturbed land where noxious weeds exist, which includes the roads, pads, associated pipeline corridor, and adjacent land affected by the establishment of weeds due to this action. The operator shall consult with the Authorized Officer for acceptable weed control methods, which include following EPA and BLM requirements and policies.

V. SPECIAL REQUIREMENT(S)

Phantom Bank Heronries

Surface disturbance will not be allowed within up to 200 meters of active heronries or by delaying activity for up to 120 days, or a combination of both. Exhaust noise from pump jack engines must be muffled or otherwise controlled so as not to exceed 75 db measured at 30 ft. from the source of the noise.

Condition of Approval for protecting watershed:

- Surface disturbance will not be allowed (within x feet of drainage; or describe pad restriction).
- The entire well pad will be bermed to prevent oil, salt, and other chemical contaminants from leaving the well pad. Topsoil shall not be used to construct the berm. No water flow from the uphill side(s) of the pad shall be allowed to enter the well pad. The berm shall be maintained through the life of the well and after interim reclamation has been completed.
- Any water erosion that may occur due to the construction of the well pad during the life of the well will be quickly corrected and proper measures will be taken to prevent future erosion.
- Stockpiling of topsoil is required. The top soil shall be stockpiled in an appropriate location to prevent loss of soil due to water or wind erosion and not used for berming or erosion control.

Tank Battery COAs Only:

- Tank battery locations will be lined and bermed. A 20 mil permanent liner will be installed with a 4 oz. felt backing to prevent tears or punctures. Tank battery berms must be large enough to contain 1 ½ times the content of the largest tank.

Automatic shut off, check valves, or similar systems will be installed for tanks to minimize the effects of catastrophic line failures used in production or drilling

Cave and Karst

** Depending on location, additional Drilling, Casing, and Cementing procedures may be required by engineering to protect critical karst groundwater recharge areas.

Cave/Karst Surface Mitigation

The following stipulations will be applied to minimize impacts during construction, drilling and production.

Construction:

In the advent that any underground voids are opened up during construction activities, construction activities will be halted and the BLM will be notified immediately.

No Blasting:

No blasting will be utilized for pad construction. The pad will be constructed and leveled by adding the necessary fill and caliche.

Pad Berming:

The pad will be bermed to prevent oil, salt, and other chemical contaminants from leaving the pad. All sides will be bermed.

Tank Battery Liners and Berms:

Tank battery locations will be lined and bermed. A 20 mil permanent liner will be installed with a 4 oz. felt backing to prevent tears or punctures. Tank battery berms must be large enough to contain 1 ½ times the content of the largest tank.

Leak Detection System:

A method of detecting leaks is required. The method could incorporate gauges to measure loss, siting valves and lines so they can be visually inspected, or installing electronic sensors to alarm when a leak is present. Leak detection plan will be submitted to BLM for approval.

Automatic Shut-off Systems:

Automatic shut off, check valves, or similar systems will be installed for pipelines and tanks to minimize the effects of catastrophic line failures used in production or drilling.

Cave/Karst Subsurface Mitigation

The following stipulations will be applied to protect cave/karst and ground water concerns:

Rotary Drilling with Fresh Water:

Fresh water will be used as a circulating medium in zones where caves or karst features are expected. SEE ALSO: Drilling COAs for this well.

Directional Drilling:

Kick off for directional drilling will occur at least 100 feet below the bottom of the cave occurrence zone. SEE ALSO: Drilling COAs for this well.

Lost Circulation:

ALL lost circulation zones from the surface to the base of the cave occurrence zone will be logged and reported in the drilling report.

Regardless of the type of drilling machinery used, if a void of four feet or more and circulation losses greater than 70 percent occur simultaneously while drilling in any cave-bearing zone, the BLM will be notified immediately by the operator. The BLM will assess the situation and work with the operator on corrective actions to resolve the problem.

Abandonment Cementing:

Upon well abandonment in high cave karst areas additional plugging conditions of approval may be required. The BLM will assess the situation and work with the operator to ensure proper plugging of the wellbore.

Pressure Testing:

Annual pressure monitoring will be performed by the operator on all casing annuli and reported in a sundry notice. If the test results indicated a casing failure has occurred, remedial action will be undertaken to correct the problem to the BLM's approval.

VI. CONSTRUCTION

A. NOTIFICATION

The BLM shall administer compliance and monitor construction of the access road and well pad. Notify the Carlsbad Field Office at (575) 234-5909 at least 3 working days prior to commencing construction of the access road and/or well pad.

When construction operations are being conducted on this well, the operator shall have the approved APD and Conditions of Approval (COA) on the well site and they shall be made available upon request by the Authorized Officer.

B. TOPSOIL

The operator shall strip the top portion of the soil (root zone) from the entire well pad area and stockpile the topsoil along the edge of the well pad as depicted in the APD. The root zone is typically six (6) inches in depth. All the stockpiled topsoil will be redistributed over the interim reclamation areas. Topsoil shall not be used for berming the pad or facilities. For final reclamation, the topsoil shall be spread over the entire pad area for seeding preparation.

Other subsoil (below six inches) stockpiles must be completely segregated from the topsoil stockpile. Large rocks or subsoil clods (not evident in the surrounding terrain) must be buried within the approved area for interim and final reclamation.

C. CLOSED LOOP SYSTEM

Tanks are required for drilling operations: No Pits.

The operator shall properly dispose of drilling contents at an authorized disposal site.

D. FEDERAL MINERAL MATERIALS PIT

Payment shall be made to the BLM prior to removal of any federal mineral materials. Call the Carlsbad Field Office at (575) 234-5972.

E. WELL PAD SURFACING

Surfacing of the well pad is not required.

If the operator elects to surface the well pad, the surfacing material may be required to be removed at the time of reclamation. The well pad shall be constructed in a manner which creates the smallest possible surface disturbance, consistent with safety and operational needs.

F. EXCLOSURE FENCING (CELLARS & PITS)

Exclosure Fencing

The operator will install and maintain exclosure fencing for all open well cellars to prevent access to public, livestock, and large forms of wildlife before and after drilling operations until the pit is free of fluids and the operator initiates backfilling. (For examples of exclosure fencing design, refer to BLM's Oil and Gas Gold Book, Exclosure Fence Illustrations, Figure 1, Page 18.)

G. ON LEASE ACCESS ROADS**Road Width**

The access road shall have a driving surface that creates the smallest possible surface disturbance and does not exceed fourteen (14) feet in width. The maximum width of surface disturbance, when constructing the access road, shall not exceed twenty-five (25) feet.

Surfacing

Surfacing material is not required on the new access road driving surface. If the operator elects to surface the new access road or pad, the surfacing material may be required to be removed at the time of reclamation.

Where possible, no improvements should be made on the unsurfaced access road other than to remove vegetation as necessary, road irregularities, safety issues, or to fill low areas that may sustain standing water.

The Authorized Officer reserves the right to require surfacing of any portion of the access road at any time deemed necessary. Surfacing may be required in the event the road deteriorates, erodes, road traffic increases, or it is determined to be beneficial for future field development. The surfacing depth and type of material will be determined at the time of notification.

Crowning

Crowning shall be done on the access road driving surface. The road crown shall have a grade of approximately 2% (i.e., a 1" crown on a 14' wide road). The road shall conform to Figure 1; cross section and plans for typical road construction.

Ditching

Ditching shall be required on both sides of the road.

Turnouts

Vehicle turnouts shall be constructed on the road. Turnouts shall be intervisible with interval spacing distance less than 1000 feet. Turnouts shall conform to Figure 1; cross section and plans for typical road construction.

Drainage

Drainage control systems shall be constructed on the entire length of road (e.g. ditches, sidehill outslowing and inslaping, lead-off ditches, culvert installation, and low water crossings).

A typical lead-off ditch has a minimum depth of 1 foot below and a berm of 6 inches above natural ground level. The berm shall be on the down-slope side of the lead-off ditch.

Cross Section of a Typical Lead-off Ditch

All lead-off ditches shall be graded to drain water with a 1 percent minimum to 3 percent maximum ditch slope. The spacing interval are variable for lead-off ditches and shall be determined according to the formula for spacing intervals of lead-off ditches, but may be amended depending upon existing soil types and centerline road slope (in %);

Formula for Spacing Interval of Lead-off Ditches

Example - On a 4% road slope that is 400 feet long, the water flow shall drain water into a lead-off ditch. Spacing interval shall be determined by the following formula:

$$400 \text{ foot road with } 4\% \text{ road slope: } \frac{400'}{4\%} + 100' = 200' \text{ lead-off ditch interval}$$

Cattleguards

An appropriately sized cattleguard sufficient to carry out the project shall be installed and maintained at fence/road crossings. Any existing cattleguards on the access road route shall be repaired or replaced if they are damaged or have deteriorated beyond practical use. The operator shall be responsible for the condition of the existing cattleguards that are in place and are utilized during lease operations.

Fence Requirement

Where entry is granted across a fence line, the fence shall be braced and tied off on both sides of the passageway prior to cutting. The operator shall notify the private surface landowner or the grazing allotment holder prior to crossing any fences.

Public Access

Public access on this road shall not be restricted by the operator without specific written approval granted by the Authorized Officer.

I. DRILLING

A. DRILLING OPERATIONS REQUIREMENTS

The BLM is to be notified in advance for a representative to witness:

- a. Spudding well (minimum of 24 hours)
- b. Setting and/or Cementing of all casing strings (minimum of 4 hours)
- c. BOPE tests (minimum of 4 hours)

☒ **Eddy County**

Call the Carlsbad Field Office, 620 East Greene St., Carlsbad, NM 88220, (575) 361-2822

1. **Although Hydrogen Sulfide has not been reported in the area, it is always a potential hazard. If Hydrogen Sulfide is encountered, report measured amounts and formations to the BLM.**
2. Unless the production casing has been run and cemented or the well has been properly plugged, the drilling rig shall not be removed from over the hole without prior approval. **If the drilling rig is removed without approval – an Incident of Non-Compliance will be written and will be a “Major” violation.**
3. Floor controls are required for 3M or Greater systems. These controls will be on the rig floor, unobstructed, readily accessible to the driller and will be operational at all times during drilling and/or completion activities. Rig floor is defined as the area immediately around the rotary table; the area immediately above the substructure on which the draw works is located, this does not include the dog house or stairway area.
4. **The record of the drilling rate along with the GR/N well log run from TD to surface (horizontal well – vertical portion of hole) shall be submitted to the BLM office as well as all other logs run on the borehole 30 days from completion. If available, a digital copy of the logs is to be submitted in addition to the paper copies. The Rustler top and bottom of Salt are to be recorded on the Completion Report.**

B. CASING

Changes to the approved APD casing program need prior approval if the items substituted are of lesser grade or different casing size. The Operator can exchange the components of the proposal with that of superior strength (i.e. changing from J-55 to N-80, or from 36# to 40#). Changes to the approved cement program need prior approval if the altered cement plan has less volume or strength or if the changes are substantial (i.e. Multistage tool, ECP, etc.).

Centralizers required on surface casing per Onshore Order 2.III.B.1.f.

Wait on cement (WOC) time prior to drilling out for a primary cement job will be a minimum 18 hours for a water basin, 24 hours in the potash area, or 500 pounds compressive strength, whichever is greater for all casing strings. DURING THIS WOC TIME, NO DRILL PIPE, ETC. SHALL BE RUN IN THE HOLE. Provide compressive strengths including hours to reach required 500 pounds compressive strength prior to cementing each casing string. IF OPERATOR DOES NOT HAVE THE WELL SPECIFIC CEMENT DETAILS ONSITE PRIOR TO PUMPING THE CEMENT FOR EACH CASING STRING, THE WOC WILL BE 30 HOURS. See individual casing strings for details regarding lead cement slurry requirements.

No pea gravel permitted for remedial or fall back remedial without prior authorization from the BLM engineer.

Medium Cave/Karst

Possibility of water flows in the Salado and Castile.

Possibility of lost circulation in the Delaware.

1. The **13-3/8** inch surface casing shall be set at approximately **600** feet (a minimum of 25 feet into the Rustler Anhydrite and above the salt) and cemented to the surface. **If salt is encountered, set casing at least 25 feet above the salt.**
 - a. If cement does not circulate to the surface, the appropriate BLM office shall be notified and a temperature survey utilizing an electronic type temperature survey with surface log readout will be used or a cement bond log shall be run to verify the top of the cement. Temperature survey will be run a minimum of six hours after pumping cement and ideally between 8-10 hours after completing the cement job.
 - b. **Wait on cement (WOC) time for a primary cement job is to include the lead cement slurry.**
 - c. Wait on cement (WOC) time for a remedial job will be a minimum of 4 hours after bringing cement to surface or 500 pounds compressive strength, whichever is greater.
 - d. If cement falls back, remedial cementing will be done prior to drilling out that string.
2. The minimum required fill of cement behind the **9-5/8** inch intermediate casing is:
☒ Cement to surface. If cement does not circulate see B.1.a, c-d above.

If 75% or greater lost circulation occurs while drilling the intermediate casing hole, the cement on the production casing must come to surface.

Centralizers required on horizontal leg, must be type for horizontal service and a minimum of one every other joint.

3. The minimum required fill of cement behind the **5-1/2** inch production casing is:

Operator has proposed DV tool at depth of 5000'. Operator is to submit sundry if DV tool depth varies by more than 100' from approved depth.

a. First stage to DV tool:

- ☒ Cement to circulate. If cement does not circulate, contact the appropriate BLM office before proceeding with second stage cement job. Operator should have plans as to how they will achieve approved top of cement on the next stage.

b. Second stage above DV tool:

- ☒ Cement should tie-back at least 300 feet into previous casing string. Operator shall provide method of verification.

4. If hardband drill pipe is rotated inside casing, returns will be monitored for metal. If metal is found in samples, drill pipe will be pulled and rubber protectors which have a larger diameter than the tool joints of the drill pipe will be installed prior to continuing drilling operations.

C. PRESSURE CONTROL

1. All blowout preventer (BOP) and related equipment (BOPE) shall comply with well control requirements as described in Onshore Oil and Gas Order No. 2 and API RP 53 Sec. 17.
2. **Operator has proposed a multi-bowl wellhead assembly that has a weld on head with no o-ring seals. This assembly will only be tested when installed on the surface casing. Minimum working pressure of the blowout preventer (BOP) and related equipment (BOPE) required for drilling below the surface casing shoe shall be 3000 (3M) psi.**
 - a. **Wellhead manufacturer is supplying the test plug/retrieval tool for the operator's third party tester to use during the BOP/BOPE test. Operator shall use the supplied test plug/retrieval tool.**
 - b. **Operator shall install the wear bushing required by the wellhead manufacturer. This wear bushing shall be installed by using the test plug/retrieval tool.**
 - c. **Wellhead manufacturer representative shall be on location when the intermediate casing mandrel is landed. Operator shall submit copy of manufacturer's wellsite report with subsequent report.**
 - d. **Operator shall perform the intermediate casing integrity test to 70% of the casing burst. This will test the multi-bowl seals.**
 - e. **If the cement does not circulate and one inch operations would have been possible with a standard wellhead, the well head shall be cut off, cementing operations performed and another wellhead installed.**

3. The appropriate BLM office shall be notified a minimum of 4 hours in advance for a representative to witness the tests.
- a. In a water basin, for all casing strings utilizing slips, these are to be set as soon as the crew and rig are ready and any fallback cement remediation has been done. The casing cut-off and BOP installation can be initiated four hours after installing the slips, which will be approximately six hours after bumping the plug. For those casing strings not using slips, the minimum wait time before cut-off is eight hours after bumping the plug. BOP/BOPE testing can begin after cut-off or once cement reaches 500 psi compressive strength (including lead when specified), whichever is greater. However, if the float does not hold, cut-off cannot be initiated until cement reaches 500 psi compressive strength (including lead when specified).
 - a. The tests shall be done by an independent service company utilizing a test plug **not a cup or J-packer**.
 - b. The test shall be run on a 5000 psi chart for a 2-3M BOP/BOP, on a 10000 psi chart for a 5M BOP/BOPE and on a 15000 psi chart for a 10M BOP/BOPE. If a linear chart is used, it shall be a one hour chart. A circular chart shall have a maximum 2 hour clock. If a twelve hour or twenty-four hour chart is used, tester shall make a notation that it is run with a two hour clock.
 - c. The results of the test shall be reported to the appropriate BLM office.
 - d. All tests are required to be recorded on a calibrated test chart. **A copy of the BOP/BOPE test chart and a copy of independent service company test will be submitted to the appropriate BLM office.**
 - e. The BOP/BOPE test shall include a low pressure test from 250 to 300 psi. The test will be held for a minimum of 10 minutes if test is done with a test plug and 30 minutes without a test plug. This test shall be performed prior to the test at full stack pressure.

D. DRILL STEM TEST

If drill stem tests are performed, Onshore Order 2.III.D shall be followed.

E. WASTE MATERIAL AND FLUIDS

All waste (i.e. drilling fluids, trash, salts, chemicals, sewage, gray water, etc.) created as a result of drilling operations and completion operations shall be safely contained and disposed of properly at a waste disposal facility. No waste material or fluid shall be disposed of on the well location or surrounding area.

Porto-johns and trash containers will be on-location during fracturing operations or any other crew-intensive operations.

JAM 030614

II. PRODUCTION (POST DRILLING)

A. WELL STRUCTURES & FACILITIES

Placement of Production Facilities

Production facilities should be placed on the well pad to allow for maximum interim recontouring and revegetation of the well location.

Exclosure Netting (Open-top Tanks)

Immediately following active drilling or completion operations, the operator will take actions necessary to prevent wildlife and livestock access, including avian wildlife, to all open-topped tanks that contain or have the potential to contain salinity sufficient to cause harm to wildlife or livestock, hydrocarbons, or Resource Conservation and Recovery Act of 1976-exempt hazardous substances. At a minimum, the operator will net, screen, or cover open-topped tanks to exclude wildlife and livestock and prevent mortality. If the operator uses netting, the operator will cover and secure the open portion of the tank to prevent wildlife entry. The operator will net, screen, or cover the tanks until the operator removes the tanks from the location or the tanks no longer contain substances that could be harmful to wildlife or livestock. Use a maximum netting mesh size of 1 ½ inches. The netting must not be in contact with fluids and must not have holes or gaps.

Chemical and Fuel Secondary Containment and Exclosure Screening

The operator will prevent all hazardous, poisonous, flammable, and toxic substances from coming into contact with soil and water. At a minimum, the operator will install and maintain an impervious secondary containment system for any tank or barrel containing hazardous, poisonous, flammable, or toxic substances sufficient to contain the contents of the tank or barrel and any drips, leaks, and anticipated precipitation. The operator will dispose of fluids within the containment system that do not meet applicable state or U. S. Environmental Protection Agency livestock water standards in accordance with state law; the operator must not drain the fluids to the soil or ground. The operator will design, construct, and maintain all secondary containment systems to prevent wildlife and livestock exposure to harmful substances. At a minimum, the operator will install effective wildlife and livestock exclosure systems such as fencing, netting, expanded metal mesh, lids, and grate covers. Use a maximum netting mesh size of 1 ½ inches.

Open-Vent Exhaust Stack Exclosures

The operator will construct, modify, equip, and maintain all open-vent exhaust stacks on production equipment to prevent birds and bats from entering, and to discourage perching, roosting, and nesting. (*Recommended exclosure structures on open-vent exhaust stacks are in the shape of a cone.*) Production equipment includes, but may not be limited to, tanks, heater-treaters, separators, dehydrators, flare stacks, in-line units, and compressor mufflers.

Containment Structures

Proposed production facilities such as storage tanks and other vessels will have a secondary containment structure that is constructed to hold the capacity of 1.5 times the largest tank, plus freeboard to account for precipitation, unless more stringent protective requirements are deemed necessary.

Painting Requirement

All above-ground structures including meter housing that are not subject to safety requirements shall be painted a flat non-reflective paint color, **Shale Green** from the BLM Standard Environmental Color Chart (CC-001: June 2008).

B. PIPELINES

STANDARD STIPULATIONS FOR SURFACE INSTALLED PIPELINES

A copy of the application (Grant, Sundry Notice, APD) and attachments, including stipulations, survey plat and/or map, will be on location during construction. BLM personnel may request to you a copy of your permit during construction to ensure compliance with all stipulations.

Holder agrees to comply with the following stipulations to the satisfaction of the Authorized Officer:

1. The holder shall indemnify the United States against any liability for damage to life or property arising from the occupancy or use of public lands under this grant.
2. The holder shall comply with all applicable Federal laws and regulations existing or hereafter enacted or promulgated. In any event, the holder shall comply with the Toxic Substances Control Act of 1976 as amended, 15 USC 2601 et seq. (1982) with regards to any toxic substances that are used, generated by or stored on the right-of-way or on facilities authorized under this right-of-way grant. (See 40 CFR, Part 702-799 and especially, provisions on polychlorinated biphenyls, 40 CFR 761.1-761.193.) Additionally, any release of toxic substances (leaks, spills, etc.) in excess of the reportable quantity established by 40 CFR, Part 117 shall be reported as required by the Comprehensive Environmental Response, Compensation, and Liability Act, section 102b. A copy of any report required or requested by any Federal agency or State government as a result of a reportable release or spill of any toxic substances shall be furnished to the authorized officer concurrent with the filing of the reports to the involved Federal agency or State government.
3. The holder agrees to indemnify the United States against any liability arising from the release of any hazardous substance or hazardous waste (as these terms are defined in the Comprehensive Environmental Response, Compensation and Liability Act of 1980, 42 U.S.C. 9601, et seq. or the Resource Conservation and Recovery Act, 42 U.S.C. 6901, et seq.) on the Right-of-Way (unless the release or threatened release is wholly unrelated to activity of the Right-of-Way holder's activity on the Right-of-Way), or resulting from the activity of the Right-of-Way holder on the Right-of-Way. This agreement applies without regard to whether a release is caused by the holder, its agent, or unrelated third parties.
4. The holder shall be liable for damage or injury to the United States to the extent provided by 43 CFR Sec. 2883.1-4. The holder shall be held to a standard of strict liability for damage or injury to the United States resulting from pipe rupture, fire, or spills caused or substantially aggravated by any of the following within the right-of-way or permit area:
 - a. Activities of the holder including, but not limited to construction, operation, maintenance,

and termination of the facility.

b. Activities of other parties including, but not limited to:

- (1) Land clearing.
- (2) Earth-disturbing and earth-moving work.
- (3) Blasting.
- (4) Vandalism and sabotage.

c. Acts of God.

The maximum limitation for such strict liability damages shall not exceed one million dollars (\$1,000,000) for any one event, and any liability in excess of such amount shall be determined by the ordinary rules of negligence of the jurisdiction in which the damage or injury occurred.

This section shall not impose strict liability for damage or injury resulting primarily from an act of war or from the negligent acts or omissions of the United States.

5. If, during any phase of the construction, operation, maintenance, or termination of the pipeline, any oil, salt water, or other pollutant should be discharged from the pipeline system, impacting Federal lands, the control and total removal, disposal, and cleaning up of such oil, salt water, or other pollutant, wherever found, shall be the responsibility of the holder, regardless of fault. Upon failure of the holder to control, dispose of, or clean up such discharge on or affecting Federal lands, or to repair all damages resulting therefrom, on the Federal lands, the Authorized Officer may take such measures as he deems necessary to control and clean up the discharge and restore the area, including, where appropriate, the aquatic environment and fish and wildlife habitats, at the full expense of the holder. Such action by the Authorized Officer shall not relieve the holder of any responsibility as provided herein.

6. All construction and maintenance activity will be confined to the authorized right-of-way width of 20 feet. If the pipeline route follows an existing road or buried pipeline right-of-way, the surface pipeline must be installed no farther than 10 feet from the edge of the road or buried pipeline right-of-way. If existing surface pipelines prevent this distance, the proposed surface pipeline must be installed immediately adjacent to the outer surface pipeline. All construction and maintenance activity will be confined to existing roads or right-of-ways.

7. No blading or clearing of any vegetation will be allowed unless approved in writing by the Authorized Officer.

8. The holder shall install the pipeline on the surface in such a manner that will minimize suspension of the pipeline across low areas in the terrain. In hummocky or dune areas, the pipeline will be "snaked" around hummocks and dunes rather than suspended across these features.

9. The pipeline shall be buried with a minimum of 24 inches under all roads, "two-tracks," and trails. Burial of the pipe will continue for 20 feet on each side of each crossing. The condition of the road, upon completion of construction, shall be returned to at least its former state with no bumps or dips remaining in the road surface.

10. The holder shall minimize disturbance to existing fences and other improvements on public lands. The holder is required to promptly repair improvements to at least their former state. Functional use of these improvements will be maintained at all times. The holder will contact the owner of any improvements prior to disturbing them. When necessary to pass through a fence line, the fence shall be braced on both sides of the passageway prior to cutting of the fence. No permanent gates will be allowed unless approved by the Authorized Officer.

11. In those areas where erosion control structures are required to stabilize soil conditions, the holder will install such structures as are suitable for the specific soil conditions being encountered and which are in accordance with sound resource management practices.

12. Excluding the pipe, all above-ground structures not subject to safety requirement shall be painted by the holder to blend with the natural color of the landscape. The paint used shall be a color which simulates "Standard Environmental Colors" – **Shale Green**, Munsell Soil Color No. 5Y 4/2; designated by the Rocky Mountain Five State Interagency Committee.

13. The pipeline will be identified by signs at the point of origin and completion of the right-of-way and at all road crossings. At a minimum, signs will state the holder's name, BLM serial number, and the product being transported. Signs will be maintained in a legible condition for the life of the pipeline.

14. The holder shall not use the pipeline route as a road for purposes other than routine maintenance as determined necessary by the Authorized Officer in consultation with the holder. The holder will take whatever steps are necessary to ensure that the pipeline route is not used as a roadway.

15. Any cultural and/or paleontological resource (historic or prehistoric site or object) discovered by the holder, or any person working on his behalf, on public or Federal land shall be immediately reported to the authorized officer. Holder shall suspend all operations in the immediate area of such discovery until written authorization to proceed is issued by the authorized officer. An evaluation of the discovery will be made by the authorized officer to determine appropriate cultural or scientific values. The holder will be responsible for the cost of evaluation and any decision as to proper mitigation measures will be made by the authorized officer after consulting with the holder.

16. The operator shall be held responsible if noxious weeds become established within the areas of operations. Weed control shall be required on the disturbed land where noxious weeds exist, which includes the roads, powerline corridor, and adjacent land affected by the establishment of weeds due to this action. The operator shall consult with the Authorized Officer for acceptable weed control methods, which include following EPA and BLM requirements and policies.

17. Surface pipelines must be less than or equal to 4 inches and a working pressure below 125 psi.

BURIED PIPELINE STIPULATIONS

A copy of the application (Grant, APD, or Sundry Notice) and attachments, including conditions of approval, survey plat and/or map, will be on location during construction. BLM personnel may request to you a copy of your permit during construction to ensure compliance with all stipulations.

Holder agrees to comply with the following stipulations to the satisfaction of the Authorized Officer:

1. The Holder shall indemnify the United States against any liability for damage to life or property arising from the occupancy or use of public lands under this grant.
2. The Holder shall comply with all applicable Federal laws and regulations existing or hereafter enacted or promulgated. In any event, the holder shall comply with the Toxic Substances Control Act of 1976 as amended, 15 USC 2601 et seq. (1982) with regards to any toxic substances that are used, generated by or stored on the right-of-way or on facilities authorized under this right-of-way grant. (See 40 CFR Part 702-799 and especially, provisions on polychlorinated biphenyls, 40 CFR 761.1-761.193.) Additionally, any release of toxic substances (leaks, spills, etc.) in excess of the reportable quantity established by 40 CFR Part 117 shall be reported as required by the Comprehensive Environmental Response, Compensation, and Liability Act, section 102b. A copy of any report required or requested by any Federal agency or State government as a result of a reportable release or spill of any toxic substances shall be furnished to the authorized officer concurrent with the filing of the reports to the involved Federal agency or State government.
3. The holder agrees to indemnify the United States against any liability arising from the release of any hazardous substance or hazardous waste (as these terms are defined in the Comprehensive Environmental Response, Compensation and Liability Act of 1980, 42 U.S.C. 9601, et seq. or the Resource Conservation and Recovery Act, 42 U.S.C. 6901, et seq.) on the Right-of-Way (unless the release or threatened release is wholly unrelated to the Right-of-Way holder's activity on the Right-of-Way), or resulting from the activity of the Right-of-Way holder on the Right-of-Way. This agreement applies without regard to whether a release is caused by the holder, its agent, or unrelated third parties.
4. If, during any phase of the construction, operation, maintenance, or termination of the pipeline, any oil or other pollutant should be discharged from the pipeline system, impacting Federal lands, the control and total removal, disposal, and cleaning up of such oil or other pollutant, wherever found, shall be the responsibility of holder, regardless of fault. Upon failure of holder to control, dispose of, or clean up such discharge on or affecting Federal lands, or to repair all damages resulting therefrom, on the Federal lands, the Authorized Officer may take such measures as he deems necessary to control and clean up the discharge and restore the area, including where appropriate, the aquatic environment and fish and wildlife habitats, at the full expense of the holder. Such action by the Authorized Officer shall not relieve holder of any responsibility as provided herein.

5. All construction and maintenance activity will be confined to the authorized right-of-way.

6. The pipeline will be buried with a minimum cover of 36 inches between the top of the pipe and ground level.

7. The maximum allowable disturbance for construction in this right-of-way will be 30 feet:

- Blading of vegetation within the right-of-way will be allowed: maximum width of blading operations will not exceed 20 feet. The trench is included in this area. (*Blading is defined as the complete removal of brush and ground vegetation.*)
- Clearing of brush species within the right-of-way will be allowed: maximum width of clearing operations will not exceed 30 feet. The trench and bladed area are included in this area. (*Clearing is defined as the removal of brush while leaving ground vegetation (grasses, weeds, etc.) intact. Clearing is best accomplished by holding the blade 4 to 6 inches above the ground surface.*)
- The remaining area of the right-of-way (if any) shall only be disturbed by compressing the vegetation. (*Compressing can be caused by vehicle tires, placement of equipment, etc.*)

8. The holder shall stockpile an adequate amount of topsoil where blading is allowed. The topsoil to be stripped is approximately 6 inches in depth. The topsoil will be segregated from other spoil piles from trench construction. The topsoil will be evenly distributed over the bladed area for the preparation of seeding.

9. The holder shall minimize disturbance to existing fences and other improvements on public lands. The holder is required to promptly repair improvements to at least their former state. Functional use of these improvements will be maintained at all times. The holder will contact the owner of any improvements prior to disturbing them. When necessary to pass through a fence line, the fence shall be braced on both sides of the passageway prior to cutting of the fence. No permanent gates will be allowed unless approved by the Authorized Officer.

10. Vegetation, soil, and rocks left as a result of construction or maintenance activity will be randomly scattered on this right-of-way and will not be left in rows, piles, or berms, unless otherwise approved by the Authorized Officer. The entire right-of-way shall be recontoured to match the surrounding landscape. The backfilled soil shall be compacted and a 6 inch berm will be left over the ditch line to allow for settling back to grade.

11. In those areas where erosion control structures are required to stabilize soil conditions, the holder will install such structures as are suitable for the specific soil conditions being encountered and which are in accordance with sound resource management practices.

12. The holder will reseed all disturbed areas. Seeding will be done according to the attached seeding requirements, using the following seed mix.

- | | |
|---|--|
| <input type="checkbox"/> seed mixture 1 | <input type="checkbox"/> seed mixture 3 |
| <input type="checkbox"/> seed mixture 2 | <input checked="" type="checkbox"/> seed mixture 4 |
| <input type="checkbox"/> seed mixture 2/LPC | <input type="checkbox"/> Aplomado Falcon Mixture |

13. All above-ground structures not subject to safety requirements shall be painted by the holder to blend with the natural color of the landscape. The paint used shall be color which simulates "Standard Environmental Colors" – **Shale Green**, Munsell Soil Color No. 5Y 4/2.

14. The pipeline will be identified by signs at the point of origin and completion of the right-of-way and at all road crossings. At a minimum, signs will state the holder's name, BLM serial number, and the product being transported. All signs and information thereon will be posted in a permanent, conspicuous manner, and will be maintained in a legible condition for the life of the pipeline.

15. The holder shall not use the pipeline route as a road for purposes other than routine maintenance as determined necessary by the Authorized Officer in consultation with the holder before maintenance begins. The holder will take whatever steps are necessary to ensure that the pipeline route is not used as a roadway. As determined necessary during the life of the pipeline, the Authorized Officer may ask the holder to construct temporary deterrence structures.

16. Any cultural and/or paleontological resources (historic or prehistoric site or object) discovered by the holder, or any person working on his behalf, on public or Federal land shall be immediately reported to the Authorized Officer. Holder shall suspend all operations in the immediate area of such discovery until written authorization to proceed is issued by the Authorized Officer. An evaluation of the discovery will be made by the Authorized Officer to determine appropriate actions to prevent the loss of significant cultural or scientific values. The holder will be responsible for the cost of evaluation and any decision as to proper mitigation measures will be made by the Authorized Officer after consulting with the holder.

17. The operator shall be held responsible if noxious weeds become established within the areas of operations. Weed control shall be required on the disturbed land where noxious weeds exist, which includes associated roads, pipeline corridor and adjacent land affected by the establishment of weeds due to this action. The operator shall consult with the Authorized Officer for acceptable weed control methods, which include following EPA and BLM requirements and policies.

18. Escape Ramps - The operator will construct and maintain pipeline/utility trenches that are not otherwise fenced, screened, or netted to prevent livestock, wildlife, and humans from becoming entrapped. At a minimum, the operator will construct and maintain escape ramps, ladders, or other methods of avian and terrestrial wildlife escape in the trenches according to the following criteria:

- a. Any trench left open for eight (8) hours or less is not required to have escape ramps; however, before the trench is backfilled, the contractor/operator shall inspect the trench for wildlife, remove all trapped wildlife, and release them at least 100 yards from the trench.

- b. For trenches left open for eight (8) hours or more, earthen escape ramps (built at no more than a 30 degree slope and spaced no more than 500 feet apart) shall be placed in the trench.

III. INTERIM RECLAMATION

During the life of the development, all disturbed areas not needed for active support of production operations should undergo interim reclamation in order to minimize the environmental impacts of development on other resources and uses.

Within six (6) months of well completion, operators should work with BLM surface management specialists (Jim Amos: 575-234-5909) to devise the best strategies to reduce the size of the location. Interim reclamation should allow for remedial well operations, as well as safe and efficient removal of oil and gas.

During reclamation, the removal of caliche is important to increasing the success of revegetating the site. Removed caliche that is free of contaminants may be used for road repairs, fire walls or for building other roads and locations. In order to operate the well or complete workover operations, it may be necessary to drive, park and operate on restored interim vegetation within the previously disturbed area. Disturbing revegetated areas for production or workover operations will be allowed. If there is significant disturbance and loss of vegetation, the area will need to be revegetated. Communicate with the appropriate BLM office for any exceptions/exemptions if needed.

All disturbed areas after they have been satisfactorily prepared need to be reseeded with the seed mixture provided below.

Upon completion of interim reclamation, the operator shall submit a Sundry Notices and Reports on Wells, Subsequent Report of Reclamation (Form 3160-5).

X. FINAL ABANDONMENT & RECLAMATION

At final abandonment, well locations, production facilities, and access roads must undergo "final" reclamation so that the character and productivity of the land are restored.

Earthwork for final reclamation must be completed within six (6) months of well plugging. All pads, pits, facility locations and roads must be reclaimed to a satisfactory revegetated, safe, and stable condition, unless an agreement is made with the landowner or BLM to keep the road and/or pad intact.

After all disturbed areas have been satisfactorily prepared, these areas need to be revegetated with the seed mixture provided below. Seeding should be accomplished by drilling on the contour whenever practical or by other approved methods. Seeding may need to be repeated until revegetation is successful, as determined by the BLM.

Operators shall contact a BLM surface protection specialist prior to surface abandonment operations for site specific objectives (Jim Amos: 575-234-5909).

(Insert Seed Mixture Here)
Seed Mixture 4, for Gypsum Sites

The holder shall seed all disturbed areas with the seed mixture listed below. The seed mixture shall be planted in the amounts specified in pounds of pure live seed (PLS)* per acre. There shall be no primary or secondary noxious weeds in the seed mixture. Seed will be tested and the viability testing of seed will be done in accordance with State law(s) and within nine (9) months prior to purchase. Commercial seed will be either certified or registered seed. The seed container will be tagged in accordance with State law(s) and available for inspection by the authorized officer.

Seed will be planted using a drill equipped with a depth regulator to ensure proper depth of planting where drilling is possible. The seed mixture will be evenly and uniformly planted over the disturbed area (smaller/heavier seeds have a tendency to drop the bottom of the drill and are planted first). The holder shall take appropriate measures to ensure this does not occur. Where drilling is not possible, seed will be broadcast and the area shall be raked or chained to cover the seed. When broadcasting the seed, the pounds per acre are to be doubled. The seeding will be repeated until a satisfactory stand is established as determined by the authorized officer. Evaluation of growth will not be made before completion of at least one full growing season after seeding.

Species to be planted in pounds of pure live seed* per acre:

<u>Species</u>	<u>lb/acre</u>
Alkali Sacaton (Sporobolus airoides)	1.0
DWS□Four-wing saltbush (Atriplex canescens)	5.0

DWS: DeWinged Seed

*Pounds of pure live seed:

Pounds of seed x percent purity x percent germination = pounds pure live seed