

District I
1625 N. French Dr., Hobbs, NM 88240
Phone: (575) 393-6161 Fax: (575) 393-0720
District II
811 S. First St., Artesia, NM 88210
Phone: (575) 748-1283 Fax: (575) 748-9720
District III
1000 Rio Brazos Road, Artec, NM 87410
Phone: (505) 334-6178 Fax: (505) 334-6170
District IV
1220 S. St. Francis Dr., Santa Fe, NM 87505
Phone: (505) 476-3460 Fax: (505) 476-3462

State of New Mexico
Energy Minerals and Natural Resources
Oil Conservation Division
1220 South St. Francis Dr.
Santa Fe, NM 87505

Form C-101
Revised July 18, 2013

6-24-2014

APPLICATION FOR PERMIT TO DRILL, RE-ENTER, DEEPEN, PLUGBACK, OR ADD A ZONE

¹ Operator Name and Address COG Operating LLC 2208 West Main Street Artesia, NM 88210		² OGRID Number 229137 ³ API Number 30-015-42464
⁴ Property Code 308619	⁵ Property Name Graham Nash State Com	⁶ Well No 6H

7. Surface Location

UL - Lot	Section	Township	Range	Lot Idn	Feet from	N/S Line	Feet From	E/W Line	County
3/G	33	26S	28E	3	560	South	2200	East	Eddy

8. Proposed Bottom Hole Location

UL - Lot	Section	Township	Range	Lot Idn	Feet from	N/S Line	Feet From	E/W Line	County
B	28	26S	28E		330	North	1980	East	Eddy

9. Pool Information

Pool Name	Pool Code
Hay Hollow, Bone Spring	30215

Additional Well Information

¹¹ Work Type New Well	¹² Well Type Oil	¹³ Cable/Rotary	¹⁴ Lease Type State	¹⁵ Ground Level Elevation 3025.9'
¹⁶ Multiple N	¹⁷ Proposed Depth 14378'	¹⁸ Formation Bone Spring	¹⁹ Contractor	²⁰ Spud Date 6/30/2014
Depth to Ground water		Distance from nearest fresh water well		Distance to nearest surface water

☒ We will be using a closed-loop system in lieu of lined pits

21. Proposed Casing and Cement Program

Type	Hole Size	Casing Size	Casing Weight/ft	Setting Depth	Sacks of Cement	Estimated TOC
Surface	17.5	13.375	48	350'	350	
Intamd	12.25	9.625	36	2510'	725	
Pilot Hole Plug 1	8.75	-	-	9319'	150	9019'
Pilot Hole Plug	8.75	-	-	8050'	400	7250'
Production	8.75	5.5	17	14378'	2760	2210'

Casing/Cement Program: Additional Comments

Drill 17-1/2" hole to -350' w/ fresh water spud mud. Run 13-3/8" 48# H40 STC casing to TD and cement to surface in one stage. Will use 1" tubing and Class C w/ 2% CaCl2 to cement to surface, if necessary. Drill 12-1/4" hole to -2510' with saturated brine water. Run 9-5/8" 36# J55 LTC casing to TD and cement to surface in one stage. Drill 8-3/4" pilot hole to 10600', log and plug back with 150 sx cement plug f/ 9019' - 9319' and 400 sx cement plug f/ 7250' - 8050'. Drill 8-3/4" curve and lateral to 14378' with cut brine. Run 5-1/2" 17# P110 Tonaris TXP BTC casing to TD and cement in one stage bringing TOC to 2210' (300' overlap).

22. Proposed Blowout Prevention Program

Type	Working Pressure	Test Pressure	Manufacturer
Double Ram	5000	5000	Cameron

²³ I hereby certify that the information given above is true and complete to the best of my knowledge and belief.

I further certify that I have complied with 19.15.14.9 (A) NMAC ☒ and/or 19.15.14.9 (B) NMAC ☒, if applicable.

Signature: *Mayte Reyes*

Printed name: Mayte Reyes

Title: Regulatory Analyst

E-mail Address: mreyes1@concho.com

Date: 6/24/2014

Phone: 575-748-6945

OIL CONSERVATION DIVISION

Approved By:

T. C. Shepard
"Geologist"

Title:

Approved Date: 6-25-2014 Expiration Date: 6-25-2016

Conditions of Approval Attached ☒

DISTRICT I
1023 N. FRENCH DR., HOBBS, NM 88240
Phone: (575) 303-6161 Fax: (575) 303-0720

DISTRICT II
811 S. FIRST ST., ARTESIA, NM 86210
Phone: (575) 748-1283 Fax: (575) 748-0720

DISTRICT III
1000 RIO BRAZOS RD., AZTEC, NM 87410
Phone: (505) 334-6178 Fax: (505) 334-6170

DISTRICT IV
1220 S. ST. FRANCIS DR., SANTA FE, NM 87505
Phone: (505) 476-3460 Fax: (505) 476-3462

State of New Mexico
Energy, Minerals & Natural Resources Department
OIL CONSERVATION DIVISION
1220 SOUTH ST. FRANCIS DR.
Santa Fe, New Mexico 87505

Form C-102
Revised August 1, 2011
Submit one copy to appropriate
District Office

☐ AMENDED REPORT

WELL LOCATION AND ACREAGE DEDICATION PLAT

API Number 30-015- 4464	Pool Code 30215	Pool Name Hay Hollow; Bone Spring
Property Code 308619	Property Name GRAHAM NASH STATE COM	Well Number 6H
OGRID No. 229137	Operator Name COG OPERATING, LLC	Elevation 3025.9

Surface Location

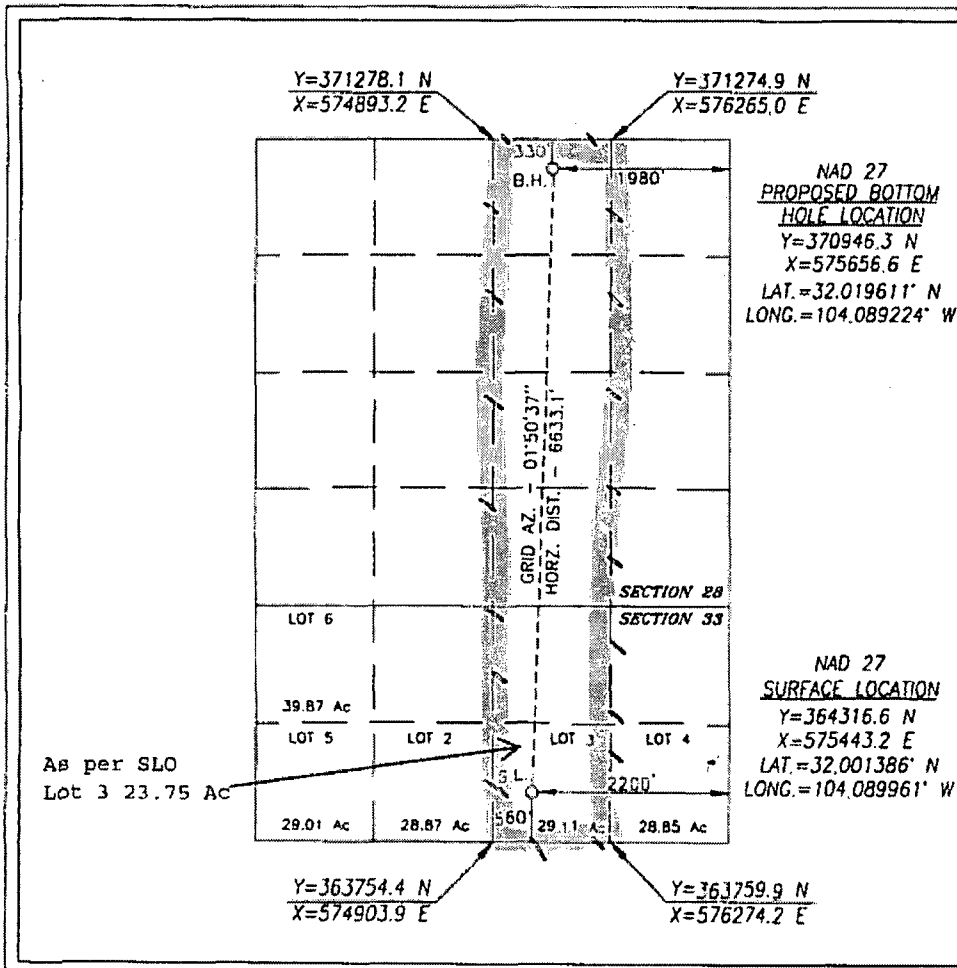
UL or lot No.	Section	Township	Range	Lot Idn	Feet from the	North/South line	Feet from the	East/West line	County
3	33	26-S	28-E		560	SOUTH	2200	EAST	EDDY

Bottom Hole Location If Different From Surface

UL or lot No.	Section	Township	Range	Lot Idn	Feet from the	North/South line	Feet from the	East/West line	County
B	28	26-S	28-E		330	NORTH	1980	EAST	EDDY

Dedicated Acres 223.75	Joint or Infill	Consolidation Code	Order No.
---------------------------	-----------------	--------------------	-----------

NO ALLOWABLE WILL BE ASSIGNED TO THIS COMPLETION UNTIL ALL INTERESTS HAVE BEEN CONSOLIDATED
OR A NON-STANDARD UNIT HAS BEEN APPROVED BY THE DIVISION



OPERATOR CERTIFICATION

I hereby certify that the information herein is true and complete to the best of my knowledge and belief, and that this organization either owns a working interest or unleased mineral interest in the land including the proposed bottom hole location or has a right to drill this well at this location pursuant to a contract with an owner of such mineral or working interest, or to a voluntary pooling agreement or a compulsory pooling order heretofore entered by the division.

Melanie J Parker 6/24/14
Signature Date

Melanie J Parker

Printed Name

mparker@concho.com

E-mail Address

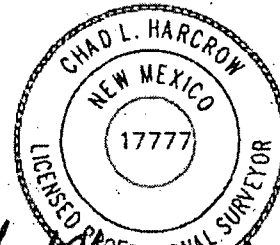
SURVEYOR CERTIFICATION

I hereby certify that the well location shown on this plat was plotted from field notes of actual surveys made by me or under my supervision, and that the same is true and correct to the best of my belief.

MARCH 8, 2014

Date of Survey

Signature & Seal of Professional Surveyor



Chad L. Hargrow 3/17/14
Certificate No. CHAD HARGROW 17777
W.O. # 14-154 DRAWN BY: VD

Permit Conditions of Approval

API: 30-015-42464

OCD Reviewer	Condition
CSHAPARD	Once the well is spud, to prevent ground water contamination through whole or partial conduits from the surface, the operator shall drill without interruption through the fresh water zone or zones and shall immediately set in cement the water protection string