

District I
1625 N. French Dr., Hobbs, NM 88240
Phone: (575) 393-6161 Fax: (575) 393-0720
District II
911 S. First St., Artesia, NM 88210
Phone: (575) 748-1283 Fax: (575) 748-9720
District III
1000 Rio Brazos Road, Aztec, NM 87410
Phone: (505) 334-6178 Fax: (505) 334-6170
District IV
1220 S. St. Francis Dr., Santa Fe, NM 87505
Phone: (505) 476-3460 Fax: (505) 476-3462

State of New Mexico
Energy, Minerals & Natural Resources Department
OIL CONSERVATION DIVISION
1220 South St. Francis Dr.
Santa Fe, NM 87505

Form C-102
Revised August 1, 2011
Submit one copy to appropriate
District Office

RECEIVED

MAR 27 2013

☒ AMENDED REPORT

WELL LOCATION AND ACREAGE DEDICATION

Artesia As Drilled

API Number 30.015.41231	Pool Code 910830	Pool Name Artesia, Glorieta-Yeso
Property Code 38784	Property Name EEYORE "34" STATE	Well Number 2
OGRID No. 157984	Operator Name OCCIDENTAL PERMIAN LIMITED PARTNERSHIP	Elevation 3675.3'

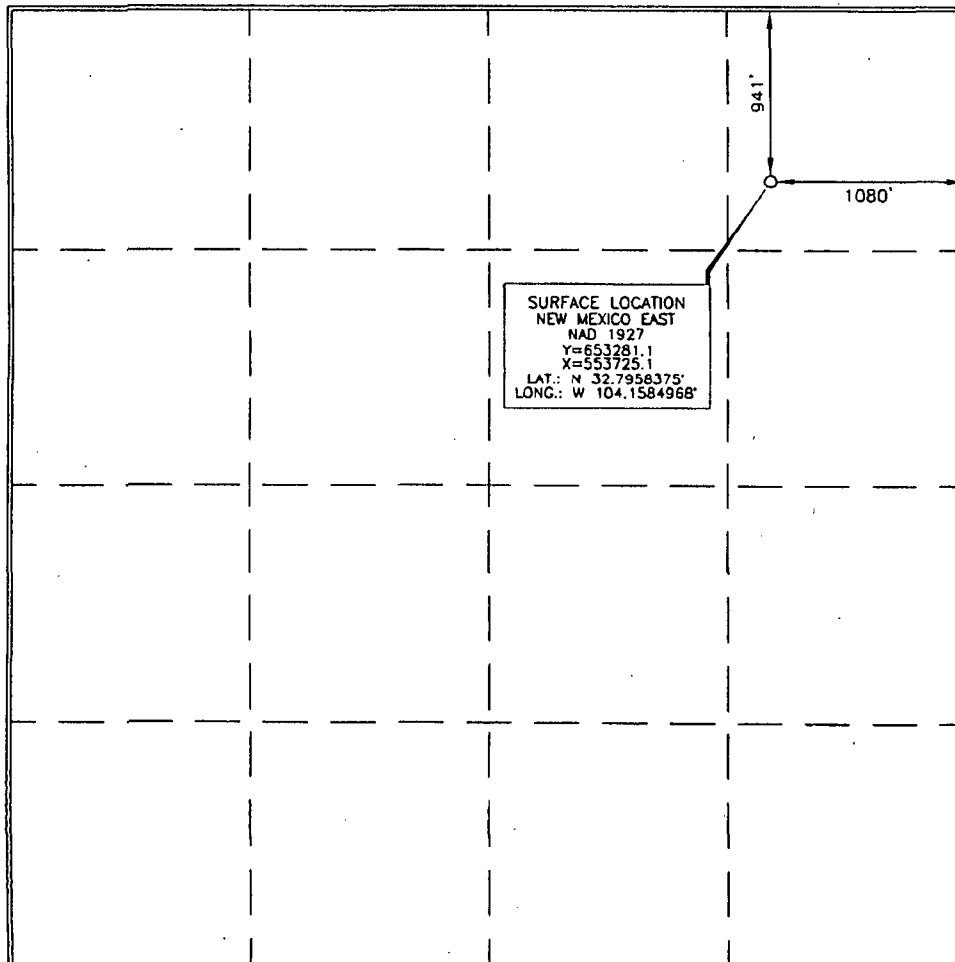
Surface Location

UL or lot no.	Section	Township	Range	Lot Idn	Feet from the	North/South line	Feet from the	East/West line	County
A	34	17 SOUTH	28 EAST, N.M.P.M.		941'	NORTH	1080'	EAST	EDDY

Bottom Hole Location If Different From Surface

UL or lot no.	Section	Township	Range	Lot Idn	Feet from the	North/South line	Feet from the	East/West line	County
A	34	17 south	28 East		786'	North	857'	East	Eddy
Dedicated Acres 40	Joint or Infill	Consolidation Code	Order No.						

No allowable will be assigned to this completion until all interests have been consolidated or a non-standard unit has been approved by the division.



OPERATOR CERTIFICATION

I hereby certify that the information contained herein is true and complete to the best of my knowledge and belief, and that this organization either owns a working interest or unleased mineral interest in the land including the proposed bottom hole location or has a right to drill this well at this location pursuant to a contract with an owner of such a mineral or working interest, or to a voluntary pooling agreement or a compulsory pooling order heretofore entered by the division.

Signature: Jennifer Duarte
Date: 3/21/13
Printed Name: Jennifer Duarte
E-mail Address: jennifer-duarte@oxy.com

SURVEYOR CERTIFICATION

I hereby certify that the well location shown on this plat was plotted from field notes of actual surveys made by me or under my supervision, and that the same is true and correct to the best of my belief.

Date of Survey: AUGUST 30, 2012
Signature and Seal: Terry J. Paul
Professional Surveyor

Certificate Number: 15079
Date: 9/17/2012