

NEW MEXICO OIL CONSERVATION DIVISION
SOUTHEAST NEW MEXICO PACKER LEAKAGE TEST

Revised 11/23/11

Operator YATES PETROLEUM CORP. Well API # 30-005-63590
Location Of Well: Unit 0 Section 21 Township 8 Range 26 E County CHAVES
Well Name & No. VALVE BOX ST. COM 1

	Name of Reservoir or Pool	Type of Prod. (Oil or Gas)	Method of Prod. (Flow Art. Lift)	Prod. Medium (Tbg. Or Cag.)	Choke Size
Upper Completion	<u>ABO</u>	<u>GAS</u>	<u>Flow</u>	<u>CSG.</u>	<u>24/64</u>
Lower Completion	<u>SILVRIAN</u>	<u>GAS</u>	<u>Flow</u>	<u>TRG.</u>	<u>16/64</u>

FLOW TEST NO. 1

Both zones shut-in at (hour, date): 7:30 AM 11-5-2014

Well opened at (hour, date): 9:30 AM 11-5-2014

Indicate by (X) the zone producing.....

Pressure at beginning of test.....

Stabilized? (Yes or No).....

Maximum pressure during test.....

Minimum pressure during test.....

Pressure at conclusion of test.....

Pressure change during test (Maximum minus Minimum).....

Was pressure change an increase or a decrease?.....

Well closed at (hour, date): 8:15 AM 11-6-14

Oil Production 0 bbls; Grav.

During Test: 0 bbls; Grav.

Remarks:

FLOW TEST NO. 2

Both zones shut-in at (hour, date): 8:15 11-6-14

Well opened at (hour, date): 8:45 11-6-14

Indicate by (X) the zone producing.....

Pressure at beginning of test.....

Stabilized? (Yes or No).....

Maximum pressure during test.....

Minimum pressure during test.....

Pressure at conclusion of test.....

Pressure change during test (Maximum minus Minimum).....

Was pressure change an increase or a decrease?.....

Well closed at (hour, date): 9:30 AM 11-7-14

Oil Production 0 bbls; Grav.

During Test: 0 bbls; Grav.

Remarks:

I hereby certify that the information herein contained is true and complete to the best of my knowledge.

Approved 11/20/14 20
New Mexico Oil Conservation Division

By REINHARD LUCAS

Title COMPLIANCE OFFICER

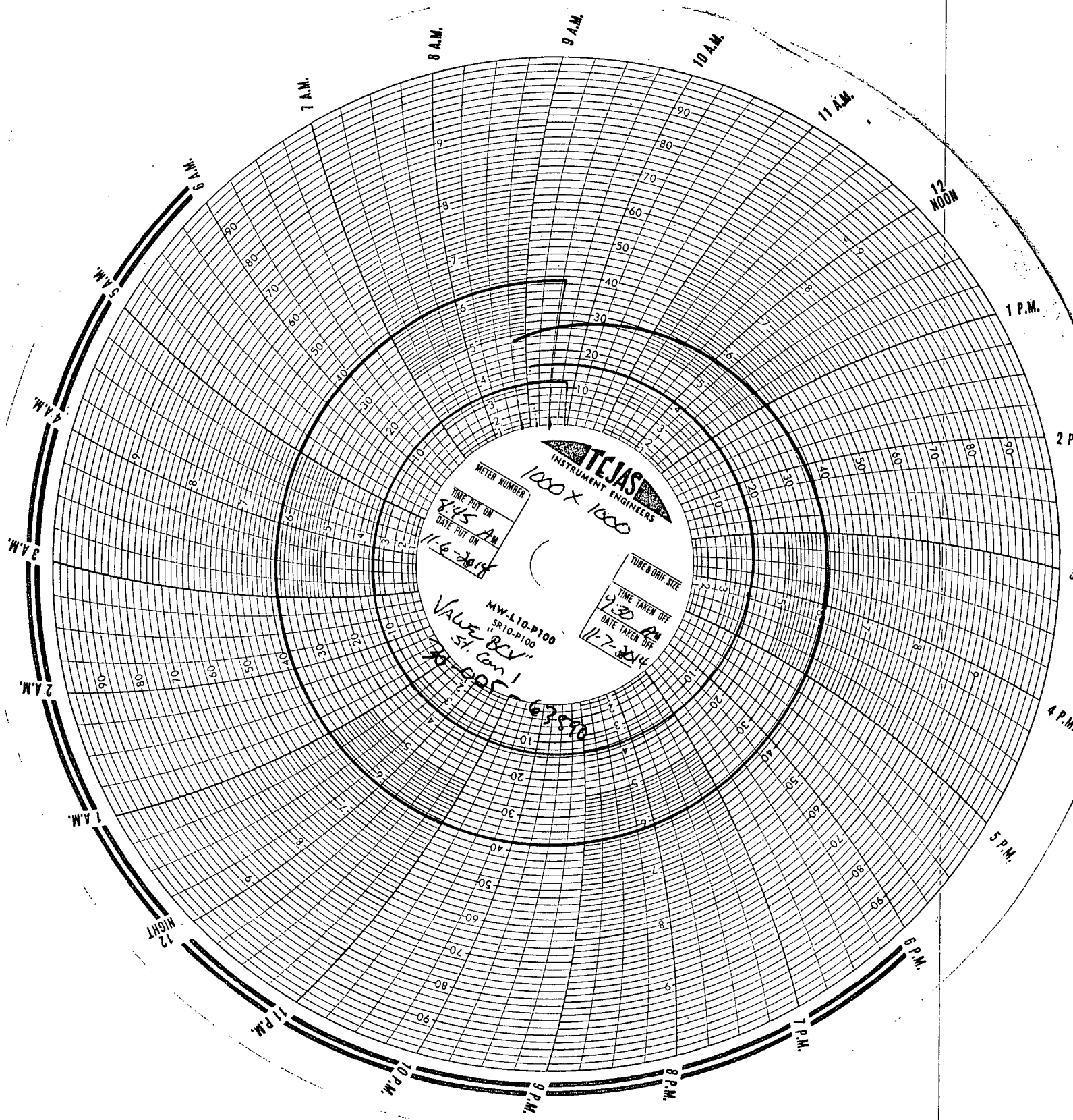
Operator YATES PETROLEUM CORP.

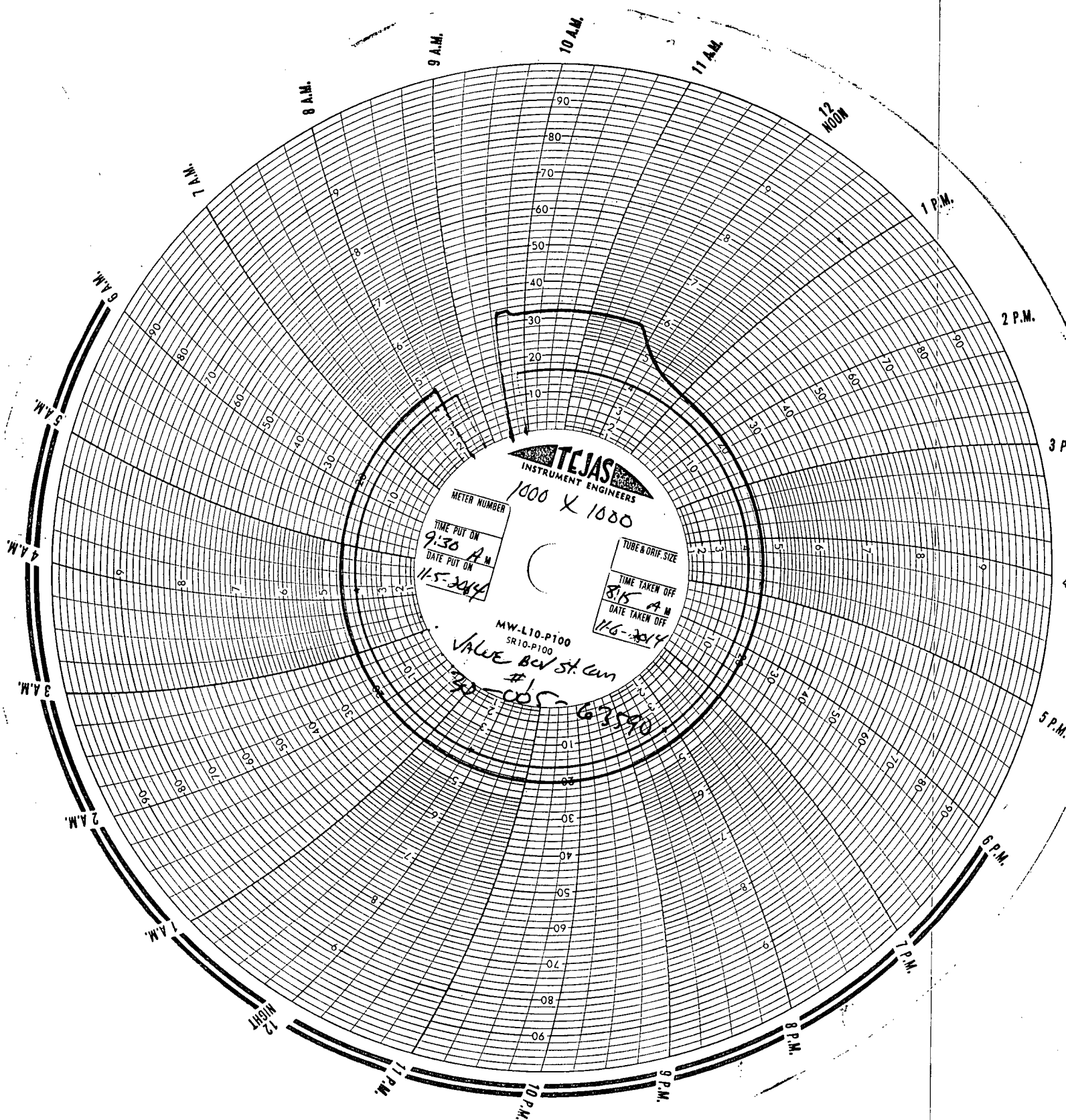
By JEFF DECK

Title MEASUREMENT TECH. III

E-mail Address deckj@questoffice.net

Date 11-7-14





TEJAS
INSTRUMENT ENGINEERS

METER NUMBER
1000 X 1000

TIME PUT ON
9:30 A.M.
DATE PUT ON
11-5-2014

TUBE & ORIF. SIZE
TIME TAKEN OFF
8:15 A.M.
DATE TAKEN OFF
11-6-2014

MW-L10-P100
SR10-P100

VALUE BEN ST. Cam
#1

340-005-63590