

UNITED STATES
DEPARTMENT OF THE INTERIOR
BUREAU OF LAND MANAGEMENT

APPLICATION FOR PERMIT TO DRILL, DEEPEN, OR PLUG BACK

1. TYPE OF WORK

DRILL ☒

DEEPEN ☐

PLUG BACK ☐

2. TYPE OF WELL

OIL
WELL ☐

GAS
WELL ☒

OTHER

SINGLE
ZONE ☐

MULTIPLE
ZONE ☐

3. NAME OF OPERATOR

The Petroleum Corporation of Delaware

4. ADDRESS OF OPERATOR

3131 Turtle Creek Blvd., Ste. 400, Dallas, Texas 75219-5415

5. LOCATION OF WELL (Report location clearly and in accordance with any State requirements.)

At surface

Unit letter K, 1,980' FSL and 1,980' FWL

At proposed prod. zone

Same

6. DISTANCE IN MILES AND DIRECTION FROM NEAREST TOWN OR POST OFFICE*

16 mi. ENE of Carlsbad, N.M.

7. DISTANCE FROM PROPOSED*

LOCATION TO NEAREST

PROPERTY OR LEASE LINE, FT.

(Also to nearest drig. unit line, if any)

1,980'

8. DISTANCE FROM PROPOSED LOCATION*

TO NEAREST WELL, DRILLING, COMPLETED,

OR APPLIED FOR, ON THIS LEASE, FT.

2,640'

9. NO. OF ACRES IN LEASE

1,743.54

10. PROPOSED DEPTH

11,800'

11. NO. OF ACRES ASSIGNED

320

12. ROTARY OR CABLE TOOLS

Rotary

13. ELEVATIONS (Show whether DF, RT, GR, etc.)

GL 3,280.0'

14.

PROPOSED CASING AND CEMENTING PROGRAM

SIZE OF HOLE	SIZE OF CASING	WEIGHT PER FOOT	SETTING DEPTH	QUANTITY OF CEMENT
15"	11 3/4"	42# & 47# SJS	350'	Circ. to surface
11"	8 5/8"	24# & 32#	3,100'	Circ. to surface
7 7/8"	5 1/2"	17# & 20#	11,800'	500 sx, exact quantity to be determined from caliper

Adequate BOP to be installed from 350' to TD.

Mud program outlined in Exhibit F.

Gas is not dedicated.

Original drilling permit approved 10/30/81, and cancelled 1/25/83.

RECEIVED

JUN 24 11 35 AM '87
CARLSBAD RESOURCES
AREA HEADQUARTERS

IN ABOVE SPACE DESCRIBE PROPOSED PROGRAM: If proposal is to deepen or plug back, give data on present productive zone and proposed new productive zone. If proposal is to drill or deepen directionally, give pertinent data on subsurface locations and measured and true vertical depths. Give blowout preventer program, if any.

24.

SIGNED

Ray P. Watkins

TITLE Petroleum Engineer

DATE June 22, 1987

(This space for Federal or State office use)

PERMIT NO.

1018 Sgd. Linda S. C. Boudell

APPROVAL DATE

APPROVED BY

Acting Area Manager

TITLE

DATE

7-1-87

CONDITIONS OF APPROVAL, IF ANY:

*See Instructions On Reverse Side

Title 18 U.S.C. Section 1001, makes it a crime for any person knowingly and willfully to make to any department or agency of the United States any false, fictitious or fraudulent statements or representations as to any matter within its jurisdiction.

NEW MEXICO OIL CONSERVATION COMMISSION
WELL LOCATION AND ACREAGE DEDICATION PLAT

Form C-102
Supersedes C-128
Effective 1-1-65

All distances must be from the outer boundaries of the Section.

Operator The Petroleum Corp.		Lease Superior Federal		Well No. 5	
Unit Letter K	Section 5	Township 20 South	Range 29 East	County Eddy	
Actual Footage Location of Well:					
1980 feet from the South line and		1980 feet from the West line			
Ground Level Elev. 3280.0'	Producing Formation Morrow	East Burton Flat (Morrow)		Dedicated Acreage: 320	Acres

1. Outline the acreage dedicated to the subject well by colored pencil or hachure marks on the plat below.
2. If more than one lease is dedicated to the well, outline each and identify the ownership thereof (both as to working interest and royalty).
3. If more than one lease of different ownership is dedicated to the well, have the interests of all owners been consolidated by communitization, unitization, force-pooling, etc?

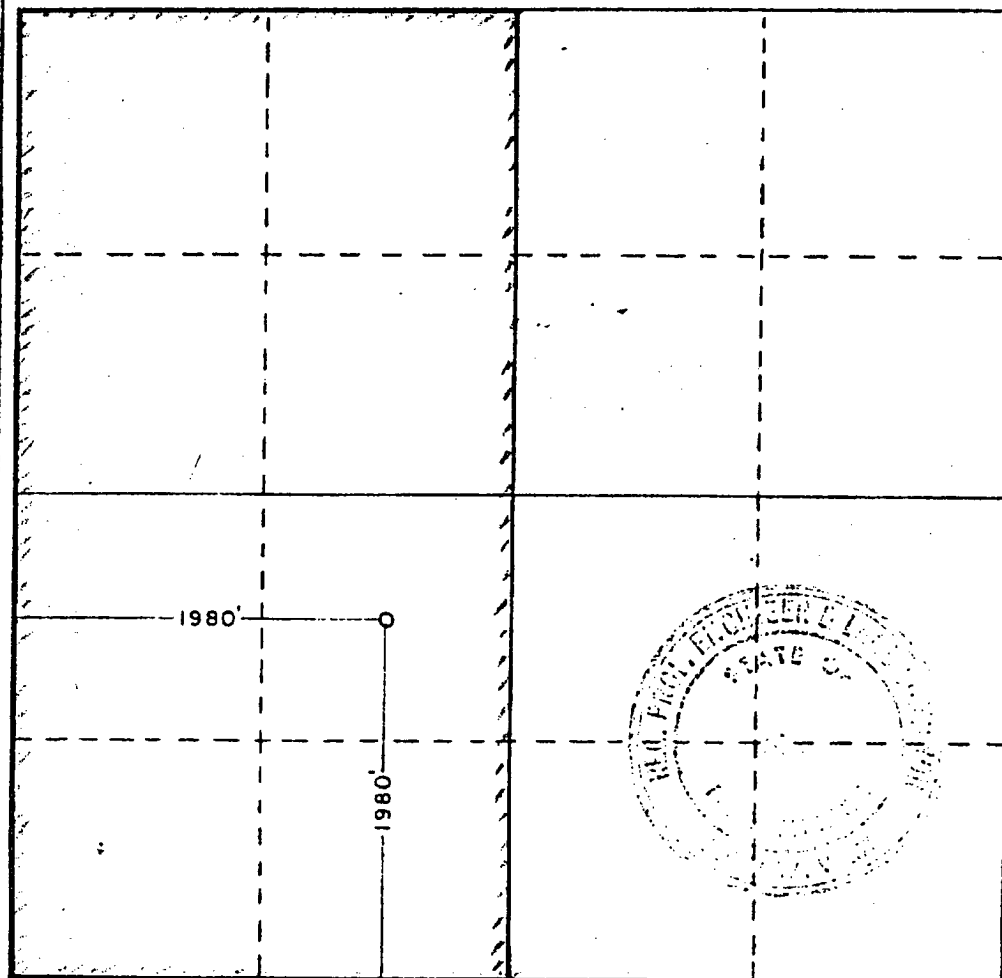
☐ Yes ☐ No If answer is "yes," type of consolidation

If answer is "no," list the owners and tract descriptions which have actually been consolidated. (Use reverse side of this form if necessary.)

No allowable will be assigned to the well until all interests have been consolidated (by communitization, unitization, forced-pooling, or otherwise) or until a non-standard unit, eliminating such interests, has been approved by the Commission.

RECEIVED BY
JUL -2 1987

O. C. D.
ARTESIA, OFFICE



CERTIFICATION

I hereby certify that the information contained herein is true and complete to the best of my knowledge and belief.

Name
L. E. Thomas
Position
Manager of Operations
Company
The Petroleum Corp.
Date
October 5, 1981

I hereby certify that the well location shown on this plat was plotted from field notes of actual surveys made by me or under my supervision, and that the same is true and correct to the best of my knowledge and belief.

Date Surveyed
Aug. 5, 1981

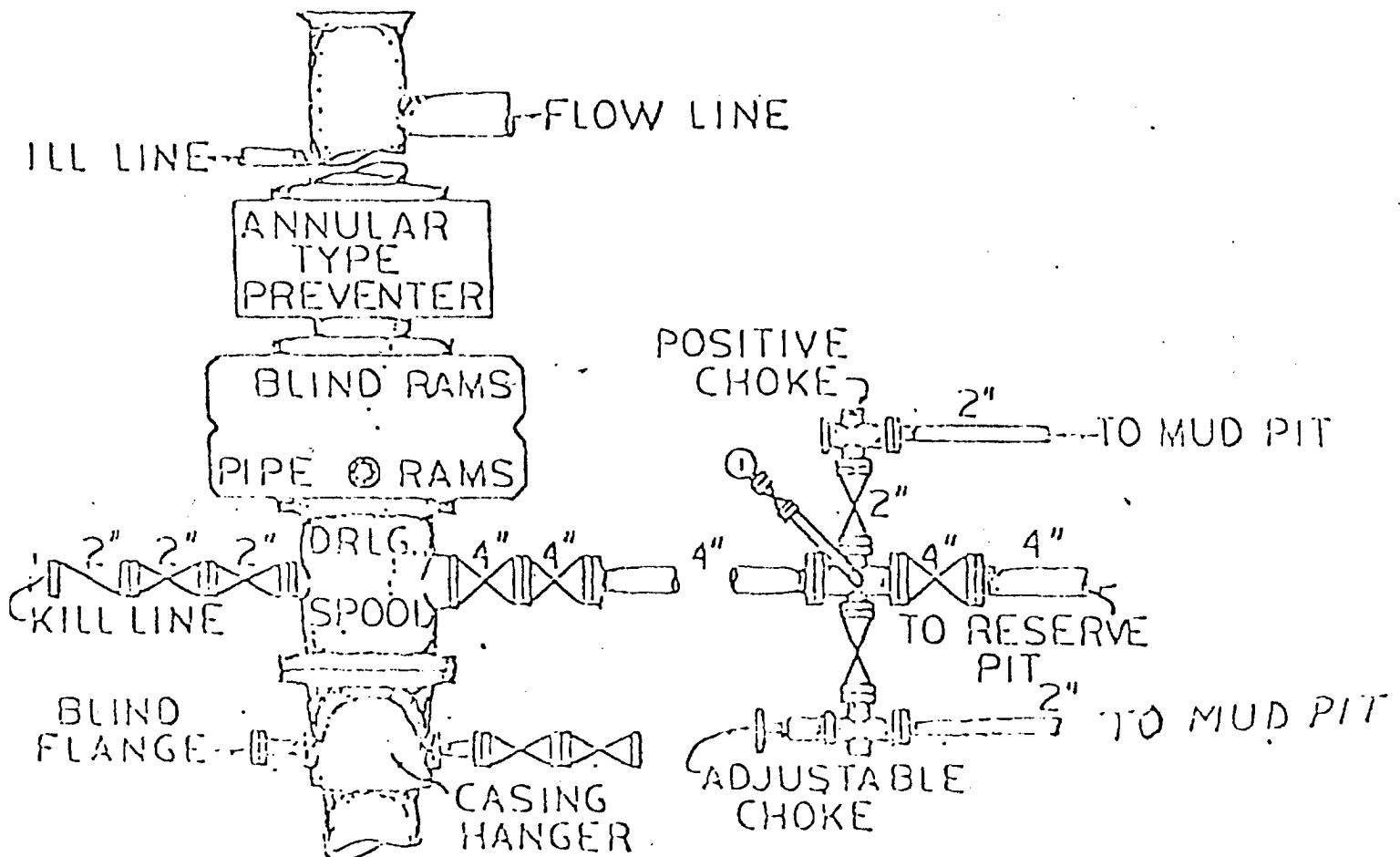
Registered Professional Engineer and/or Land Surveyor

John W. West

Certificate No. **JOHN W. WEST 876**
PATRICK A. ROMERO 6668
Revised 1-5-1980 3322

EXHIBIT E
The Petroleum Corporation
Superior Federal Well No. 5
1980' FSL and 1980' FWL
Section 5-T20S-R29E
Eddy County, New Mexico

B.O.P. ARRANGEMENT RIG NO. 3
3000 LB. W.P. B.O.P.
10" CAMERON TYPE-SS HYDRAULIC B.O.P. 3000 P.S.I.
12" G.K. HYDRILL 3000 W.P.
80 GALLON- STATION KOOMEY ACCUMULATOR
3000 LB. W.P. CHOKE MANIFOLD



APPLICATION FOR DRILLING
The Petroleum Corporation
Superior Federal Well No. 5
1980' FSL and 1980' FWL
Section 5-T20S-R29E
Eddy County, New Mexico

In conjunction with Form 9-331C, Application for Permit to Drill, subject well in Section 5, Township 20 South, Range 29 East, Eddy County, New Mexico, The Petroleum Corporation submits the following ten items of pertinent information in accordance with U.S.G.S. requirements:

1. The geologic surface formation is Alluvium and Bolson deposits.
2. The estimated tops of geologic markers are as follows:

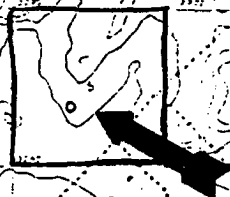
Yates	1,200'
Seven Rivers	1,425'
Delaware	3,225'
Bone Springs	5,025'
Wolfcamp	9,100'
Strawn	10,200'
Atoka	10,500'
Morrow	10,800'
Barnett Shale	11,450'

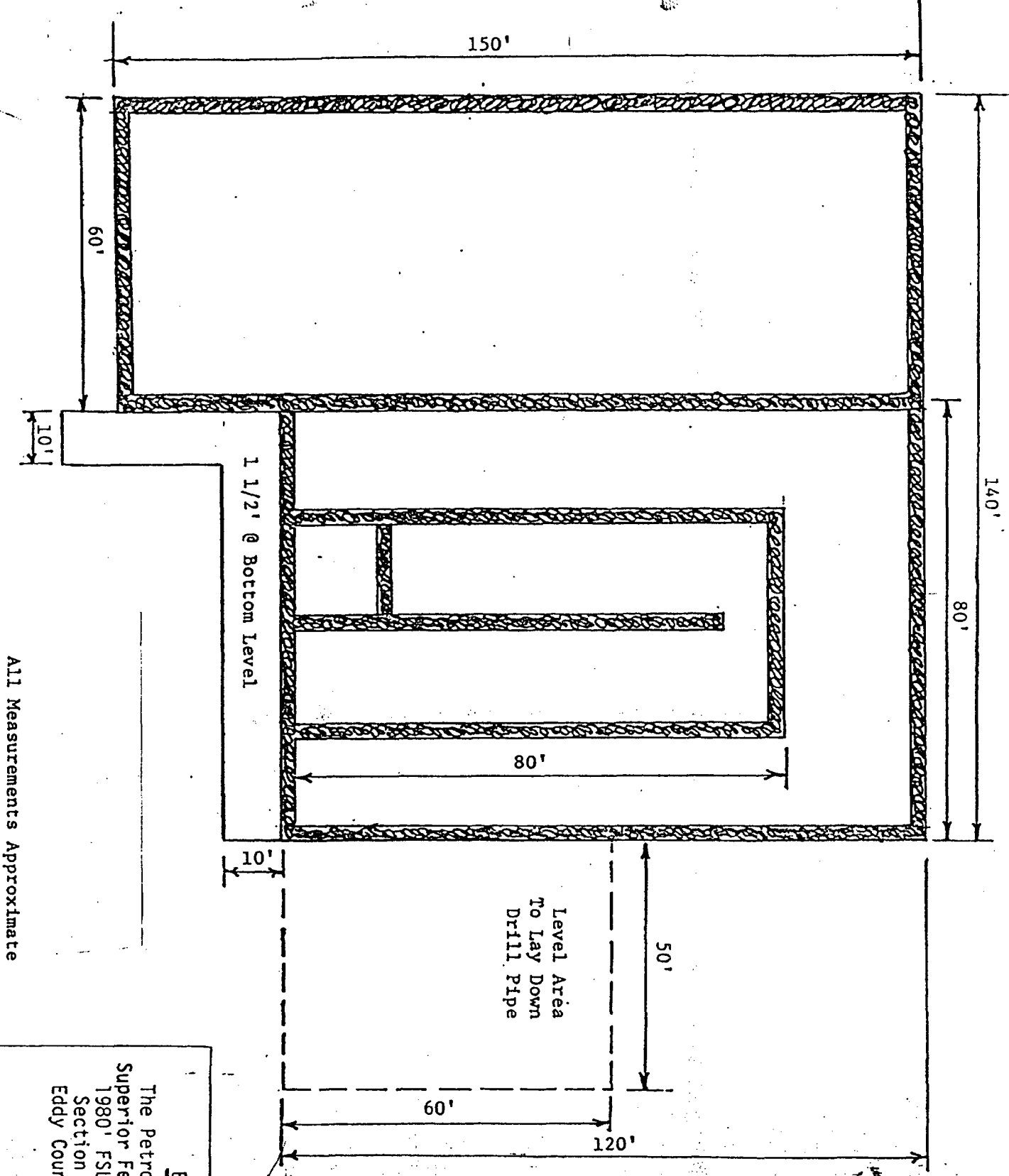
3. The estimated depths at which anticipated water, oil or gas formations are expected to be encountered are:
 Water: At approximately 240 feet.
 Oil or Gas: Wolfcamp at approximately 9,100'
 Strawn at approximately 10,200'
 Atoka at approximately 10,500'
 Morrow at approximately 10,800'
4. Proposed casing program: See Form 9-331C and Exhibit F (Page 2)
5. Pressure control equipment: See Form 9-331C and Exhibit E
6. Mud program: See Exhibit F (Page 3)
7. Testing, logging and coring programs: See Exhibit F (Page 2)
8. No abnormal pressures or temperatures are anticipated.
9. Anticipated starting date: As soon as possible.

EXHIBIT C
The Petroleum Corporation
Superior Federal Well No. 5
1930' FSL and 1980' FWL
Section 5-T20S-R29E
Eddy County, New Mexico

Topographic Map

LOCATION





All Measurements Approximate

EXHIBIT D-1

The Petroleum Corporation
Superior Federal Well No.
1980' FSL and 1980' FWL
Section 5-T20S-R29E
Eddy County, New Mexico

For Reserve Pits
See Attached Drawings

EXHIBIT D-2

