

**NM OIL CONSERVATION**  
ARTESIA DISTRICT

**FEB 20 2015**

Form C-102

Revised August 1, 2011

Submit one copy to appropriate  
District Office

**RECEIVED**

□ AMENDED REPORT

**DISTRICT I**  
1625 N. French Dr., Hobbs, NM 88240  
Phone: (575) 393-6161 Fax: (575) 393-0720

**DISTRICT II**  
811 S. First St., Artesia, NM 88210  
Phone: (575) 748-1283 Fax: (575) 748-9720

**DISTRICT III**  
1000 Rio Brazos Road, Aztec, NM 87410  
Phone: (505) 334-6178 Fax: (505) 334-6170

**DISTRICT IV**  
1220 S. St. Francis Dr., Santa Fe, NM 87505  
Phone: (505) 476-3460 Fax: (505) 476-3462

State of New Mexico  
Energy, Minerals & Natural Resources Department  
**OIL CONSERVATION DIVISION**  
1220 South St. Francis Dr.  
Santa Fe, New Mexico 87505

**WELL LOCATION AND ACREAGE DEDICATION PLAT**

API Number <b>30-015-42400</b>	Pool Code <b>96831</b>	Pool Name <b>Cedar Lake; Glorieta-Yeso</b>
Property Code <b>308710</b>	Property Name <b>COFFEE FEDERAL</b>	Well Number <b>018</b>
OGRID No. <b>873</b>	Operator Name <b>APACHE CORPORATION</b>	Elevation <b>3766'</b>

Surface Location

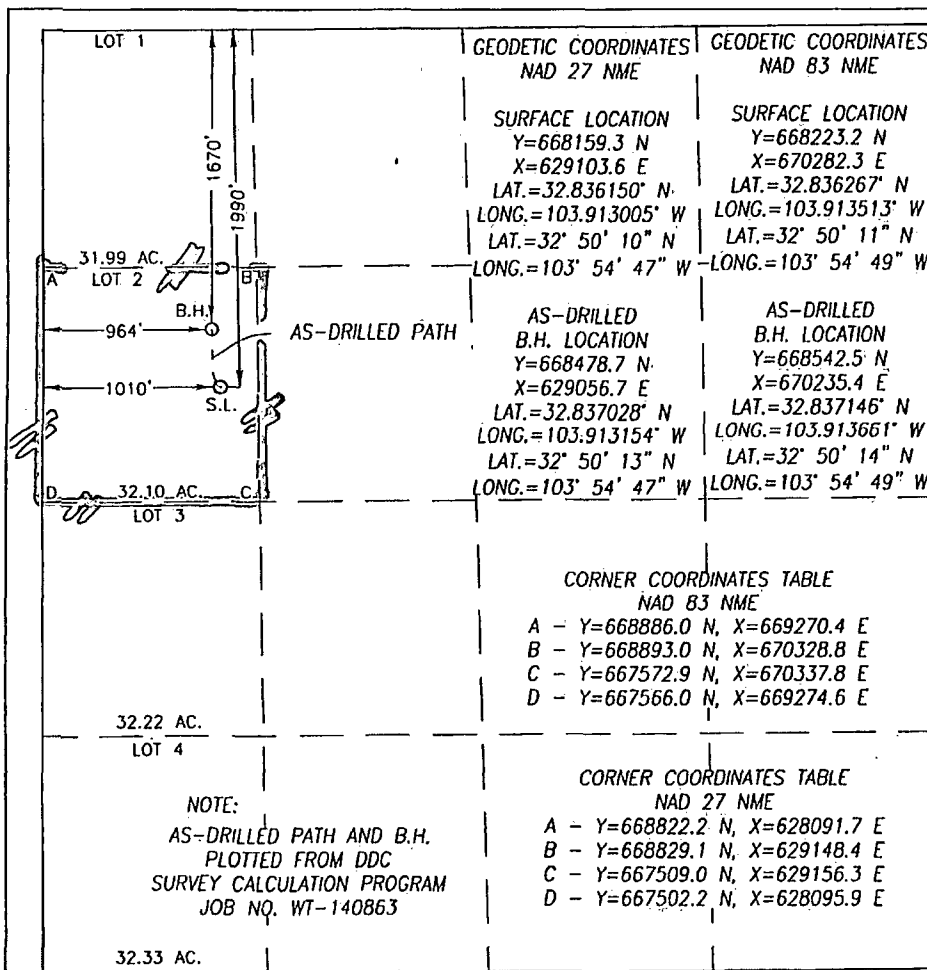
UL or lot No.	Section	Township	Range	Lot Idn	Feet from the	North/South line	Feet from the	East/West line	County
<b>E</b>	<b>18</b>	<b>17-S</b>	<b>31-E</b>	<b>2</b>	<b>1990</b>	<b>NORTH</b>	<b>1010</b>	<b>WEST</b>	<b>EDDY</b>

AS-Drilled Bottom Hole Location If Different From Surface

UL or lot No.	Section	Township	Range	Lot Idn	Feet from the	North/South line	Feet from the	East/West line	County
<b>E</b>	<b>18</b>	<b>17-S</b>	<b>31-E</b>	<b>2</b>	<b>1670</b>	<b>NORTH</b>	<b>964</b>	<b>WEST</b>	<b>EDDY</b>

Dedicated Acres <b>32.1</b>	Joint or Infill	Consolidation Code	Order No.
--------------------------------	-----------------	--------------------	-----------

NO ALLOWABLE WILL BE ASSIGNED TO THIS COMPLETION UNTIL ALL INTERESTS HAVE BEEN CONSOLIDATED OR A NON-STANDARD UNIT HAS BEEN APPROVED BY THE DIVISION



**OPERATOR CERTIFICATION**

I hereby certify that the information herein is true and complete to the best of my knowledge and belief, and that this organization either owns a working interest or unleased mineral interest in the land including the proposed bottom hole location or has a right to drill this well at this location pursuant to a contract with an owner of such mineral or working interest, or to a voluntary pooling agreement or a compulsory pooling order heretofore entered by the division.

*[Signature]* **02/17/15**  
Signature Date  
**Fatima Vasquez**  
Printed Name  
**Fatima.Vasquez@apache**  
E-mail Address **corp.com**

**SURVEYOR CERTIFICATION**

I hereby certify that the well location shown on this plat was plotted from field notes of actual surveys made by me or under my supervision, and that the same is true and correct to the best of my belief.

**MARCH 25, 2013**

Date of Survey  
Signature & Seal of Professional Surveyor:

**RONALD J. EIDSON**  
NEW MEXICO  
3239  
*[Signature]* **11/12/2014**  
Certificate Number **Gary G. Eidson 12641**  
**Ronald J. Eidson 3239**  
LSL REL. W.O. 14.13.0115 JWSC W.O. 14.13.1202