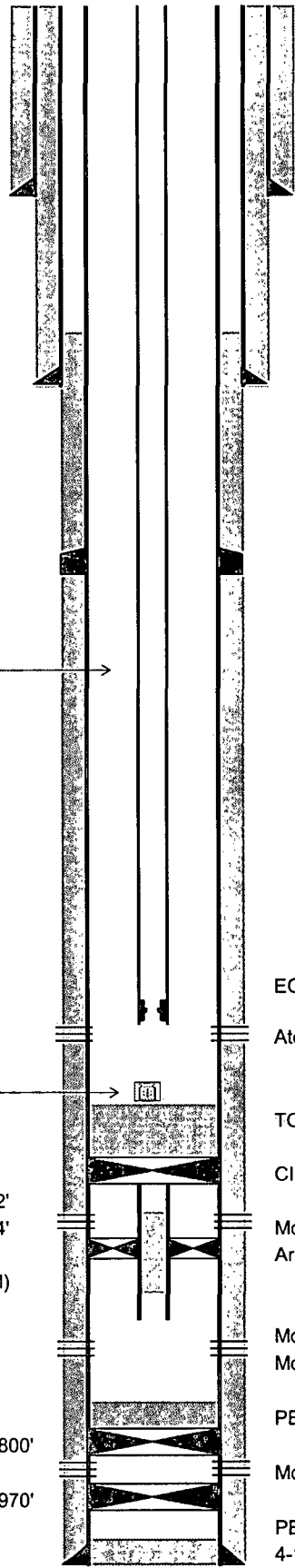


1535710



Cimarex Energy Co. of Colorado
Oracle 21 Federal #1
660' FNL & 660' FWL
Sec. 21, T-25-S, R-26-E, Eddy Co., NM
H.Hubbard 10/09/2014

KB - 19' above GL



13-3/8", 48# H-40 csg @ 267'
cmtd w/ 340 sx, cmt circ

TOC @ 2342' by CBL

9-5/8", 40# J-55 csg @ 2693'
cmtd w/ 975 sx, cmt circ

DV Tool @ 7967'
cmtd w/ 1110 sx

324 jts 2-3/8" 4.7# L80 tbg

EOT @ 10,598' w/ SN

Atoka perms (10642' - 10648')

Nine Energy TCP gun

TOC @ 11,055'

CIBP @ ± 11,330' w/ 25 sx cmt on top

Top of tbg @ 11,332'
Tag fill w/ WL @ 11,404'

Morrow perms (11485' - 11500')
Arrowset 1-X pkr @ 11499'

Tagged fill @ 11,590' (SLM)

EOT @ 11602'
Morrow perms (11662' - 11670')
Morrow perms (11735' - 11742')

CIBP @ 11800'

PBTD @ 11785'

CIBP @ 11970'

Morrow perms (11826' - 11870')

PBTD @ 12292'
4-1/2" 11.6# P-110 @ 12340' cmtd w/ 1250 sx
TD @ 12350'