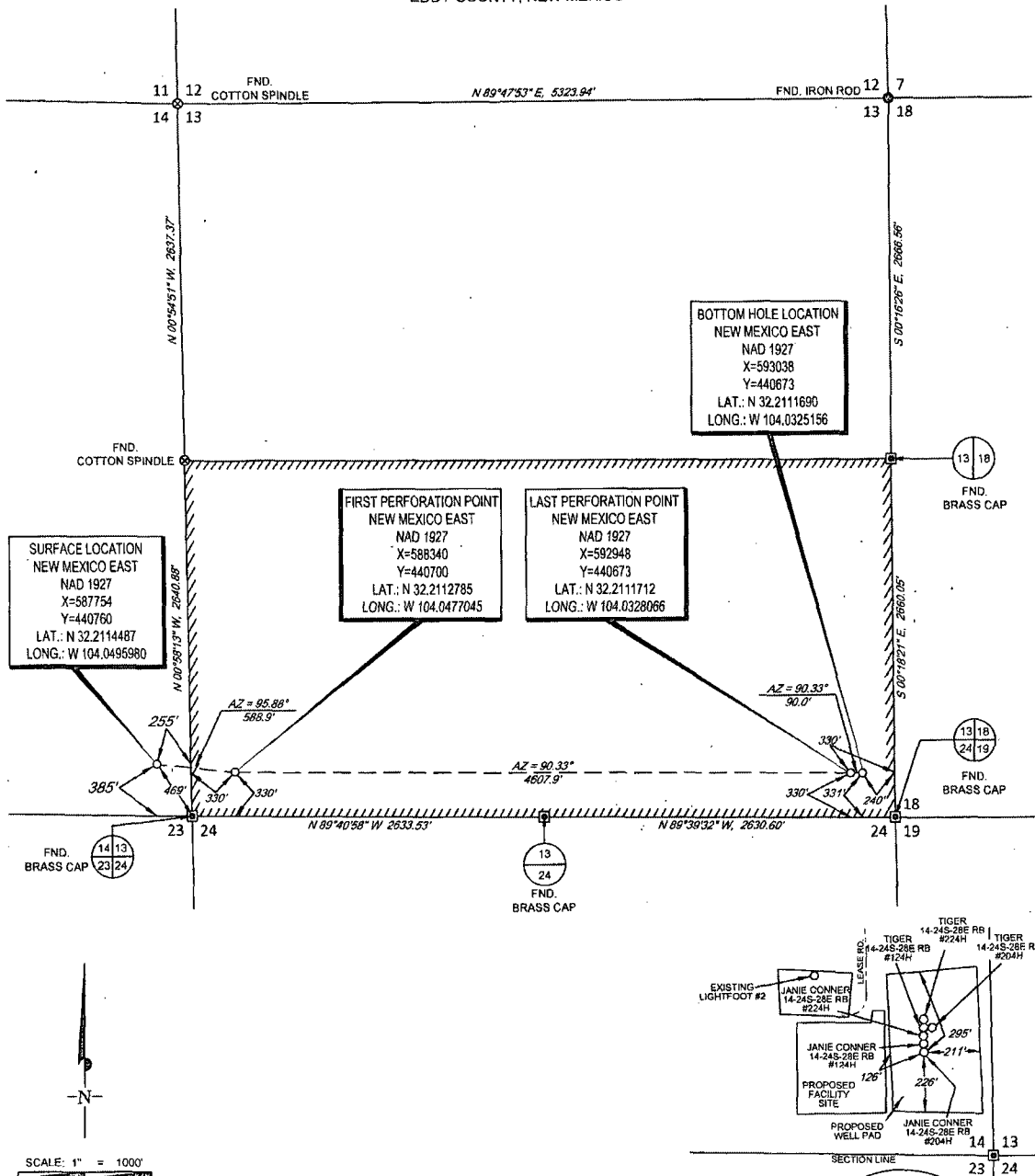


30-015-43317

820 9/1/2015



SECTION 14, TOWNSHIP 24-S, RANGE 28-E, N.M.P.M.  
EDDY COUNTY, NEW MEXICO



SCALE: 1" = 1000'  
0' 500' 1000'

LEASE NAME & WELL NO.: JANIE CONNER 13-24S-28E RB #204H

SECTION 14 TWP 24-S RGE 28-E SURVEY N.M.P.M.  
COUNTY EDDY STATE NM  
DESCRIPTION 385' FSL & 255' FEL

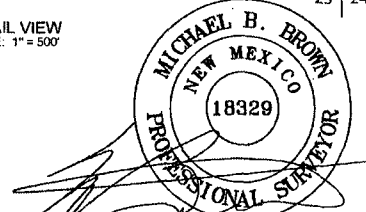
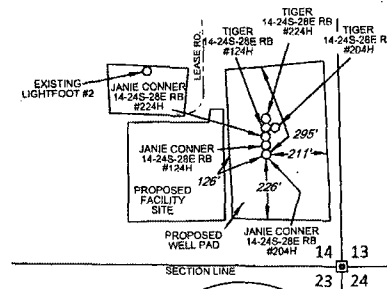
DISTANCE & DIRECTION

FROM INT. OF US-285 & DUARTE RD., GO EAST ON DUARTE RD.  
±1.3 MILES, THENCE SOUTH (RIGHT) ON McDONALD RD. ±0.8  
MILES, THENCE SOUTH (RIGHT) ON LEASE RD. ±0.1 MILES TO A  
POINT ±450 FEET EAST OF THE LOCATION.

ALL BEARINGS, DISTANCES, AND COORDINATE VALUES CONTAINED HEREON ARE GRID  
BASED UPON THE NEW MEXICO STATE PLANE COORDINATE SYSTEM, EAST ZONE OF THE  
NORTH AMERICAN DATUM 1927, U.S. SURVEY FEET

THIS EASEMENT/SERVITUDE LOCATION SHOWN HEREON HAS BEEN SURVEYED ON THE GROUND  
UNDER MY SUPERVISION AND PREPARED ACCORDING TO THE EVIDENCE FOUND AT THE TIME OF  
SURVEY, AND DATA PROVIDED BY MATADOR PRODUCTION COMPANY. THIS CERTIFICATION IS MADE  
AND LIMITED TO THOSE PERSONS OR ENTITIES SHOWN ON THE FACE OF THIS PLAT AND IS  
NON-TRANSFERABLE. THIS SURVEY IS CERTIFIED FOR THIS TRANSACTION ONLY.

DETAIL VIEW  
SCALE: 1" = 500'



Michael Blake Brown, P.S. No. 18329  
AUGUST 20, 2015



**TOPOGRAPHIC**  
LOYALTY INNOVATION LEGACY

1400 EVERMAN PARKWAY, SUITE 197 - FT. WORTH, TEXAS 76140  
TELEPHONE: (817) 744-7512 - FAX: (817) 744-7548  
2903 NORTH BIG SPRING - MIDLAND, TEXAS 79705  
TELEPHONE: (432) 682-1653 OR (800) 767-1653 - FAX: (432) 682-1743  
WWW.TOPOGRAPHIC.COM

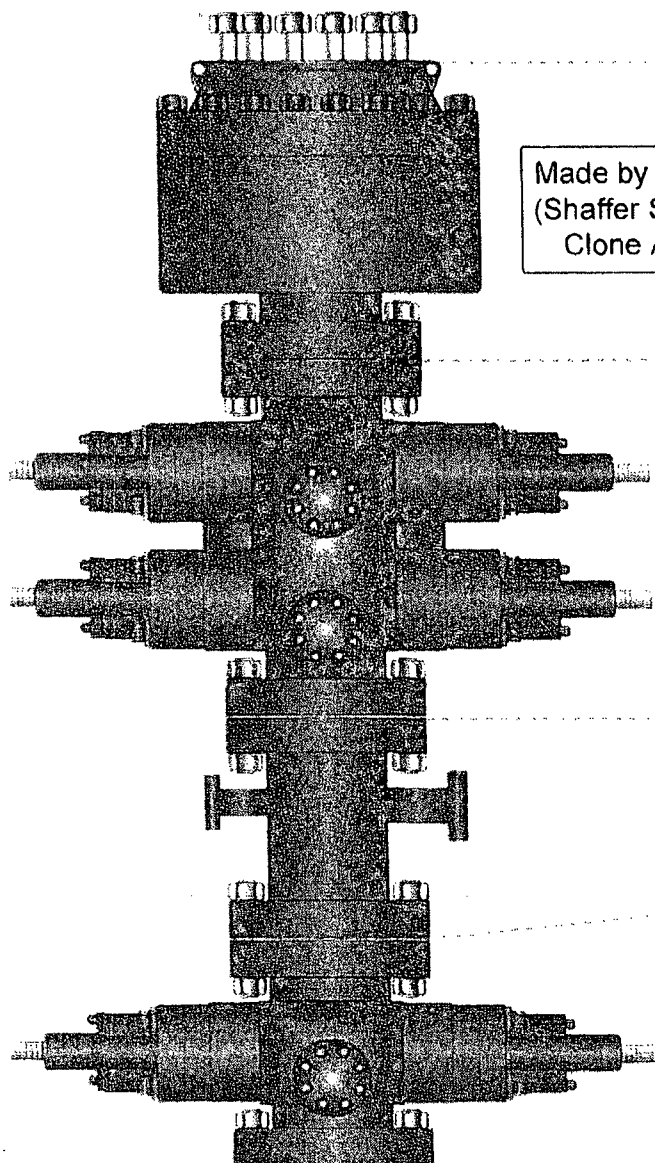


**PATTERSON-UTI**

*Well Control*

**RIG:** 29

30-015-43317



Made by Cameron  
(Shaffer Spherical)  
Clone Annular

PATTERSON-UTI # PS2-628

STYLE: New Shaffer Spheric

BORE 13 5/8" PRESSURE 5,000

HEIGHT: 48 1/2" WEIGHT: 13,800

PATTERSON-UTI # PC2-128

STYLE: New Cameron Type

BORE 13 5/8" PRESSURE 10,000

RAMS: TOP 5" Pipe BTM Blin

HEIGHT: 66 5/8" WEIGHT: 24,000

Length 40" Outlets 4" 10M

DSA 4" 10M x 2" 10M

PATTERSON-UTI # PC2-221

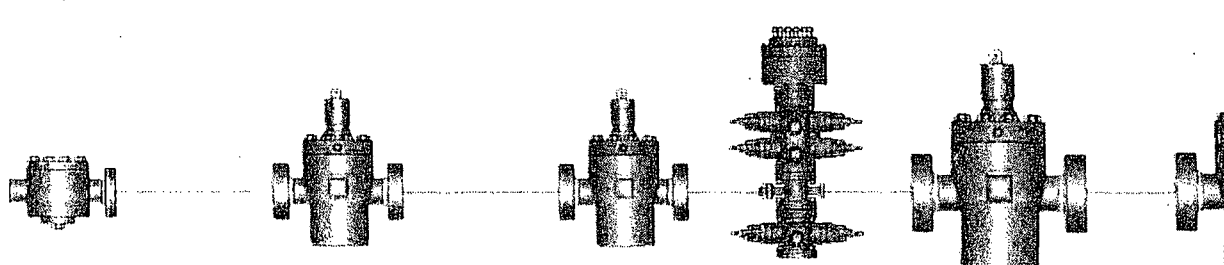
STYLE: New Cameron Type

BORE 13 5/8" PRESSURE 10,000

RAMS: 5" Pipe

HEIGHT: 41 5/8" WEIGHT: 13,000

### WING VALVES



Check Valve

2" Manual Valve

2" Manual Valve

4" Manual Valve

4" Hy