

District I  
1625 N. French Dr., Hobbs, NM 88240  
District II  
1301 W. Grand Avenue, Artesia, NM 88210  
District III  
1000 Rio Brazos Road, Aztec, NM 87410  
District IV  
1220 S. St. Francis Dr., Santa Fe, NM 87505

State of New Mexico

Form C-101  
May 27, 2004

NOTIFY OCD OF SPUD & TIME TO  
WITNESS CEMENTING OF  
SURFACE & INTERMEDIATE  
CASING

ources

n **RECEIVED** Submit to appropriate District Office

NOV 10 2005

☐ AMENDED REPORT

APPLICATION FOR PERMIT TO **DRILL**, RE-ENTER, DEEPEN, PLUGBACK, OR ADD A ZONE

Operator Name and Address Parallel Petroleum Corp. 1004 N. Big Spring Street, Suite 400, Midland, TX. 79701		OGRID Number 230387
Property Code 35236	Property Name Easy Jet	API Number 30-003-63784
Proposed Pool 1 Wildcat; Wolfcamp Gas 97489		Well No. 1
Proposed Pool 2		

Surface Location

UL or lot no.	Section	Township	Range	Lot ldn	Feet from the	North/South line	Feet from the	East/West line	County
M	4	15S	26E		400	S	760'	W	Chaves

Proposed Bottom Hole Location If Different From Surface

UL or lot no.	Section	Township	Range	Lot ldn	Feet from the	North/South line	Feet from the	East/West line	County
O	4	15S	26E		660'	N	760'	W	Chaves

Additional Well Information

Work Type Code N	Well Type Code O & G	Cable/Rotary R	Lease Type Code P	Ground Level Elevation 3451
Multiple No	Proposed Depth 9290MD, 5234TVD	Formation Wolfcamp	Contractor NA	Spud Date NA
Depth to Groundwater 65'		Distance from nearest fresh water well 800'		Distance from nearest surface water 1500'
Pit: Liner: Synthetic X 12_mils thick Clay <input type="checkbox"/> Pit Volume: 10,000 bbls Drilling Method: Closed-Loop System <input type="checkbox"/> Fresh Water X Brine <input type="checkbox"/> Diesel/Oil-based <input type="checkbox"/> Gas/Air <input type="checkbox"/>				

Proposed Casing and Cement Program

Hole Size	Casing Size	Casing weight/foot	Setting Depth	Sacks of Cement	Estimated TOC
* 17-1/2"	13-3/8"	48#	300'	440	Surface
* 12-1/4"	9-5/8"	36#	1300'	325	Surface
8-3/4"	5-1/2"	17#	TVD 5234'	NA	100' Above
			MD 9290'		Glorieta

22 Describe the proposed program. If this application is to DEEPEN or PLUG BACK, give the data on the present productive zone and proposed new productive zone. Describe the blowout prevention program, if any. Use additional sheets if necessary.

**Well to be Drilled as a Horizontal Wolfcamp test. The attached drilling plan will be utilized for this test and contains details on the cement and mud programs as well as the directional information. The following is a summary of this plan.**

1. Prepare surface location. Move in and rig up drilling rig, spud well and drill and set conductor. Install and test BOP's.
2. Drill 17 1/2" surface hole with rotary equipment to a minimum depth of 300'. Set 13 3/8" casing and cement.
3. Drill 12 1/4" intermediate hole to a minimum depth of 1300'. Set 9 5/8" casing and cement.
4. Drill 8 3/4" production hole 5500' TD and evaluate running mud logs as well as DLL/CNL/LDT/CAL/GR to TD.
5. Set Kickoff point at 4853' drill and advance hole to a Wolfcamp penetration point at approximately 700' N and 760' E of the SW corner of the section and continue drilling to BHL. (9290' MD & 5234' TVD)
6. Set 5 1/2" to TD and cement to a point 100' above Glorieta around 2525'. Perforate porosity and stimulate as necessary (specific procedure to be determined).
7. Place well on test.

23 I hereby certify that the information given above is true and complete to the best of my knowledge and belief. I further certify that the drilling pit will be constructed according to NMOCD guidelines X, a general permit ☐, or an (attached) alternative OCD-approved plan ☐.

Printed name: Deane Durham

Title: Drilling Engineer

E-mail Address: ddurham@plll.com

Date: 11-8-05

Phone: 432-684-3727

OIL CONSERVATION DIVISION

Approved by:

Title:

Approval Date:

Expiration Date:

Conditions of Approval Attached

☒ Fresh Water Mud to 1300' pg. 3



DISTRICT I  
1625 N. French Dr., Hobbs, NM 88240

State of New Mexico  
Energy, Minerals & Natural Resources Department

Form C-102  
Revised August 15, 2000  
Submit to Appropriate District Office  
State Lease - 4 Copies  
Fee Lease - 3 Copies

DISTRICT II  
P.O. Drawer DD, Artesia, NM 88211-0719

OIL CONSERVATION DIVISION  
2040 South Pacheco  
Santa Fe, NM 87505

DISTRICT III  
1000 Rio Brazos Rd., Artec, NM 87410

DISTRICT IV  
2040 South Pacheco, Santa Fe, NM 87505

☐ AMENDED REPORT

WELL LOCATION AND ACREAGE DEDICATION PLAT

API Number	9748	Pool Code		Pool Name	
Property Code		Property Name	EASY JET	Well Number	1
OGRID No.		Operator Name	PARALLEL PETROLEUM CORPORATION	Elevation	3425'

Surface Location

UL or lot No.	Section	Township	Range	Lot Idn	Feet from the	North/South line	Feet from the	East/West line	County
M	4	15 S	26 E		400	SOUTH	760	WEST	CHAVES

Bottom Hole Location If Different From Surface

UL or lot No.	Section	Township	Range	Lot Idn	Feet from the	North/South line	Feet from the	East/West line	County
D	4	15 S	26 E		660	NORTH	760	WEST	CHAVES

Dedicated Acres	Joint or Infill	Consolidation Code	Order No.
320			

NO ALLOWABLE WILL BE ASSIGNED TO THIS COMPLETION UNTIL ALL INTERESTS HAVE BEEN CONSOLIDATED OR A NON-STANDARD UNIT HAS BEEN APPROVED BY THE DIVISION

<p>Project Area</p> <p>Producing Area</p>	<table><tr><th colspan="2">Coordinate Table</th></tr><tr><th>Description</th><th>Plane Coordinate</th></tr><tr><td>Easy Jet #1</td><td>X = 494,834.4</td></tr><tr><td>Surface Location</td><td>Y = 741,465.7</td></tr><tr><td>Easy Jet #1</td><td>X = 494,835.9</td></tr><tr><td>Penetration Point</td><td>Y = 741,765.6</td></tr><tr><td>Easy Jet #1</td><td>X = 494,867.0</td></tr><tr><td>Bottom Hole Location</td><td>Y = 745,760.3</td></tr></table>	Coordinate Table		Description	Plane Coordinate	Easy Jet #1	X = 494,834.4	Surface Location	Y = 741,465.7	Easy Jet #1	X = 494,835.9	Penetration Point	Y = 741,765.6	Easy Jet #1	X = 494,867.0	Bottom Hole Location	Y = 745,760.3	<p>OPERATOR CERTIFICATION</p> <p>I hereby certify the the information contained herein is true and complete to the best of my knowledge and belief.</p> <p><i>Deane Dorian</i></p> <p>Signature</p> <p>Deane Dorian</p> <p>Printed Name</p> <p>Drilling Eng.</p> <p>Title</p> <p>11-8-05</p> <p>Date</p>
Coordinate Table																		
Description	Plane Coordinate																	
Easy Jet #1	X = 494,834.4																	
Surface Location	Y = 741,465.7																	
Easy Jet #1	X = 494,835.9																	
Penetration Point	Y = 741,765.6																	
Easy Jet #1	X = 494,867.0																	
Bottom Hole Location	Y = 745,760.3																	
		<p>SURVEYOR CERTIFICATION</p> <p>I hereby certify that the well location shown on this plat was plotted from field notes of ual surveys made by me or under my ervision and that the same is true and rect to the best of my belief.</p> <p>October 12, 2005</p> <p>Date Surveyed</p> <p>Signature &amp; Seal of Professional Surveyor</p> <p>12185</p> <p>W.O. Num. 2005-0971</p> <p>Certificate No.</p>																



**PARALLEL PETROLEUM CORPORATION**  
**Easy Jet #1**  
**SL: 760' FWL AND 400' FSL, BHL: 760' FWL AND 660' FNL**  
**SEC 4, T15S, R26E**  
**CHAVES COUNTY, NEW MEXICO**

**Objective**

Drill a vertical well through the Wolfcamp pay. Log and evaluate for a sidetrack to horizontal in the Wolfcamp.

**Expected Geologic Tops**

Est GL from topo: 3425', KB 3437'.  
Glorieta 2525'  
Tubb 3560'  
Abo Shale 4300'  
Wolfcamp 5235'  
Wolfcamp Shale 5420'

**Well Geometry**

- 13 3/8" casing at 300'
- 9 5/8" casing at 1300'
- Set kick-off plug for horizontal through the zone of interest
- 5 1/2" casing through the horizontal Wolfcamp; Cement per completion.

**Casing Program**

<u>Hole</u>	<u>MD</u> <u>(ft)</u>	<u>Casing</u>	<u>Weight</u>	<u>Grade</u>	<u>Coupling</u>	<u>COMMENT</u>
17-1/2"	0 – 300	13-3/8"	48	H40	ST&C	Must be below 300' (+KB).
12-1/4"	0 – 1300	9-5/8"	36	J55	LT&C	
8-3/4"	0 – 5500'	5-1/2"	17	N80	LT&C	Run through the horizontal lateral.



### Casing Cementing Program

13-3/8" slurry: 440 sacks Class C + 2% bwoc Calcium Chloride + 0.25 lbs/sack Cello Flake + 56.3% fresh water

9-5/8" slurry: Lead: 125 sacks (50:50) Poz (Fly Ash): Class C + 5% bwow Sodium Chloride + 10% bwoc Bentonite + 151.7% fresh water. Tail: 200 sacks Class C + 1% bwoc Calcium Chloride + 56.3% fresh water

Note: If cement does not circulate to surface, notify OCD. A temperature survey will most likely be required. Top out to surface with 1" pipe in the annulus.

Note: 5-1/2" Cement per completion procedure. Top of Cement should be a minimum of 100' above Glorieta at 2525'.

### Mud Program

<u>Depth</u>	<u>Hole</u>	<u>MW</u>	<u>Visc.</u>	<u>WL</u>	<u>Synopsis</u>
0 - 300	17-1/2"	8.4	32 - 38	No control	Fresh gel Lime flocc.(outer) reserve. Fresh gel sweeps, paper & cotton seed hulls for losses.
300 - 1300	12-1/4"	8.4 - 8.6	28 - 29	No control 1300 320	FRESH WATER mud only to 1300 ft. Severe loss potential. Circulate inner reserve. LCM: paper, fiber, cotton seed hulls.
1300 - 4100	8-3/4"	8.6 - 9.2	28 - 29	No control	Cut brine. Start w/existing & add brine t/80K-120K chlorides
4100 - TD	8-3/4"	8.9 - 9.5	38 - 45	6 - 10	XCD/Starch polymer as req'd for hole cleaning. Lubricants.
KOP - TD Horizontal	8-3/4" & 7-7/8"	8.9 - 9.5	38 - 45	6 - 10	XCD/Starch polymer as req'd for hole cleaning. Lubricants.



CONTOUR INTERVAL:  
HAGERMAN - 10'

U.S.G.S. TOPOGRAPHIC MAP  
HAGERMAN, N.M.

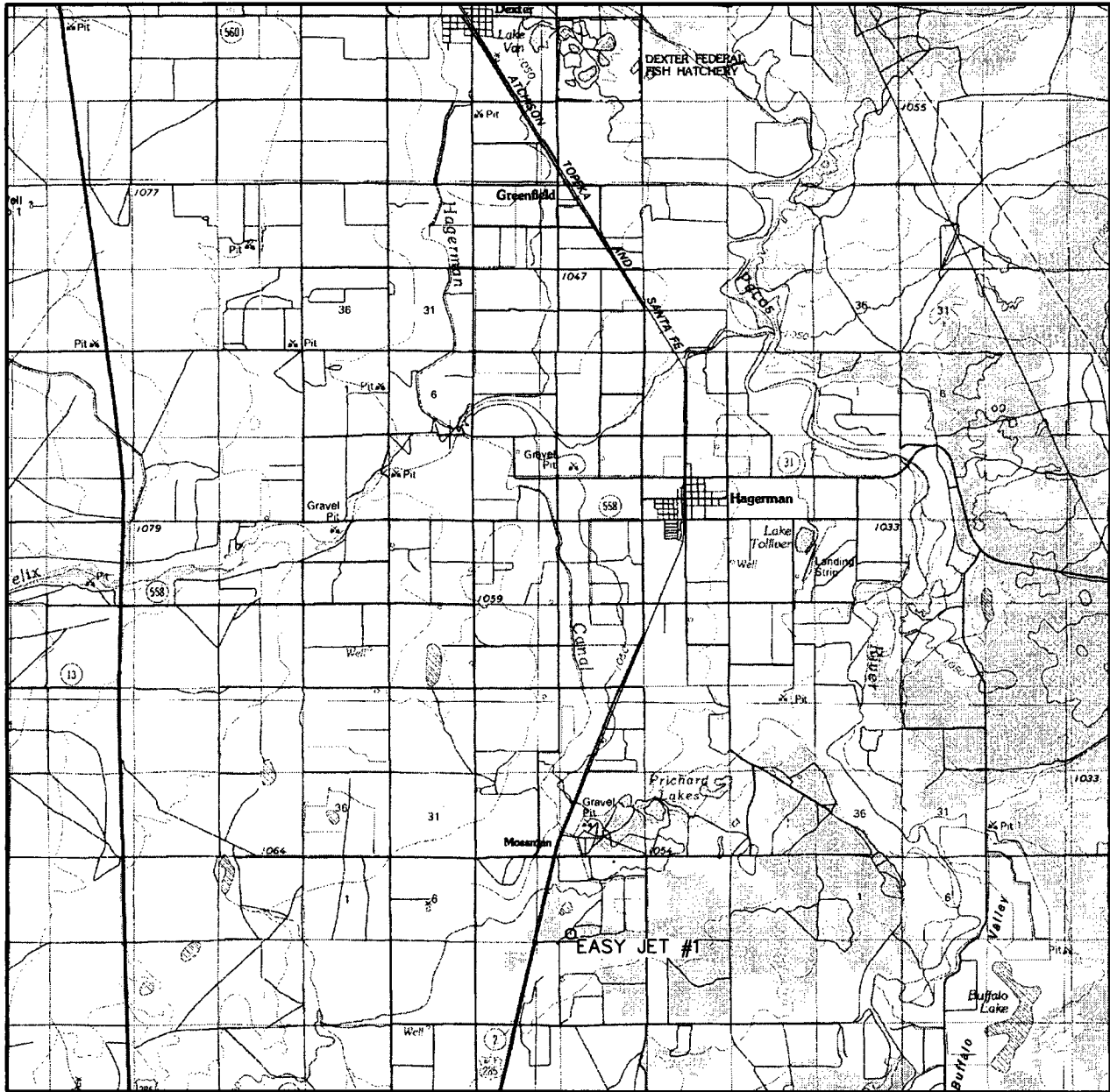


**WEST  
COMPANY**  
of Midland, Inc.

110 W. LOUISIANA, STE. 110  
MIDLAND TEXAS, 79701  
(432) 687-0865 - (432) 687-0868 FAX



## VICINITY MAP



SCALE: 1" = 2 MILES

SEC. 4 TWP. 15-S RGE. 26-E

SURVEY	N.M.P.M.
--------	----------

COUNTY CHAVES

DESCRIPTION 400' FSL & 760' FWL

ELEVATION 3425'

OPERATOR PARALLEL PETROLEUM CORPORATION

LEASE                      EASY JET



**WEST  
COMPANY**  
of Midland, Inc.

110 W. LOUISIANA, STE. 110  
MIDLAND TEXAS, 79701  
(432) 687-0865 - (432) 687-0868 FAX



# **PARALLEL** SURVEY CALCULATION PROGRAM PETROLEUM CORPORATION

OPERATOR:	Parallel Petroleum Corporation		Supervisors:	
WELL:	Easy Jet #1			
LOCATION:	Sec. 4 T-15-S R-26-E			
API NUMBER:				
COMMENTS:				

	MAG DEC. (-/+)	
	GRID CORR. (-/+)	
	TOTAL CORR. (-/+)	0.0

DATE: 11/04/05	TIME: 2:07 PM	TRUE TO GRID	▼
----------------	---------------	--------------	---

MINIMUM CURVATURE CALCULATIONS(SPE-3362)					PROPOSED DIRECTION		0.0	TARGET TRACKING TO CENTER	
SVY	MD	INC	GRID	VERT	N-S	E-W	DLS/100	ABOVE(+)	RIGHT(+)
NUM			AZM	TVD				BELOW(-)	LEFT(-)

TIE	0	0.0	0.0	0.0	0.0	0.0	0.0		
1	4853	0.0	0.0	4853.0	0.0	0.0	0.0	382.0	0.0
2	4863	1.5	0.0	4863.0	0.1	0.1	0.0	372.0	0.0
3	4873	3.0	0.0	4873.0	0.5	0.5	0.0	362.0	0.0
4	5452	90.0	0.0	5234.3	381.3	381.3	0.0	0.7	0.0
5	9290	90.0	0.0	5234.3	4219.3	4219.3	0.0	0.7	0.0

KOP @ 4853' MD  
 BUR = 15 DEG per 100 FT  
 End Curve @ 5452' MD, 5234.3' TVD  
 BHL @ 9290' MD, 5234.3' TVD, 4219.3' VS



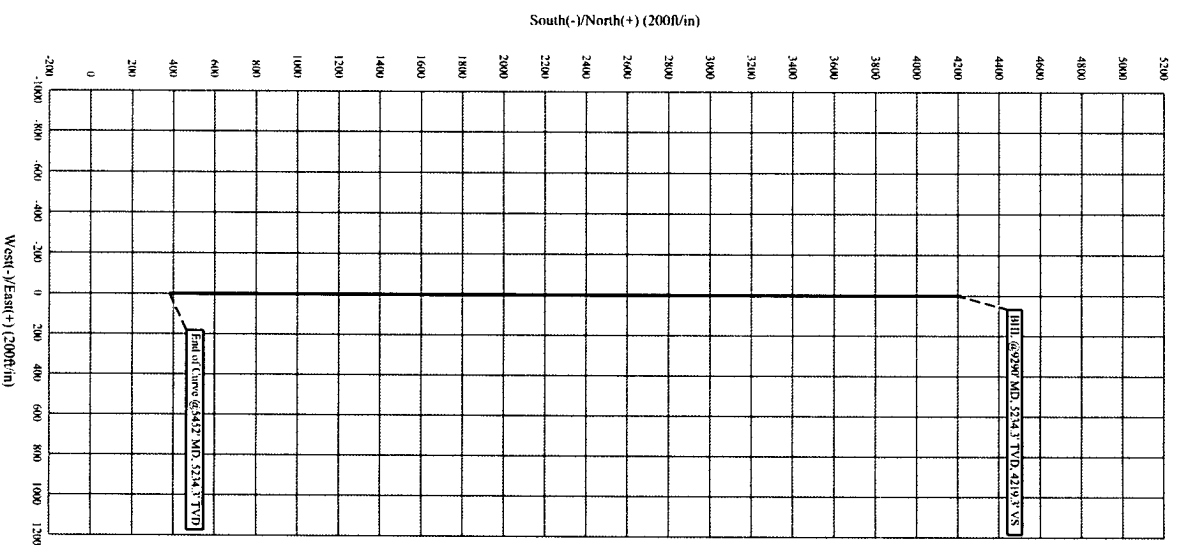
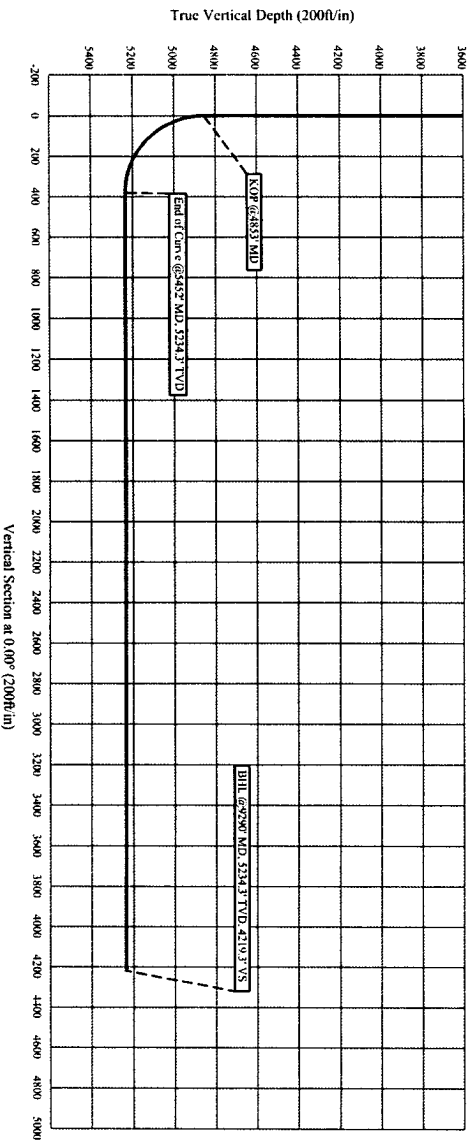
# Parallel Petroleum Corp.

Easy Jet #1

Section 4, T 15-S, R 26-E  
Chaves County, New Mexico

## COMPANY DETAILS

Parallel Petroleum Corp.  
1004 N. Big Spring, Ste 400  
Midland, Texas 79701







# PARALLEL

Petroleum Corporation

1004 North Big Spring, Suite 400 • Midland, TX 79701 • Ph: 432-684-3727 • Fax: 432-684-3905

October 21, 2005

New Mexico Oil conservation Division  
1301 W. Grand Ave.  
Artesia, New Mexico 88210

Re: Hydrogen Sulfide Potential  
Hagerman Area Wolfcamp Program  
Chavez County, New Mexico

Gentlemen:

Parallel Petroleum Corporation operates the Seabiscuit #1 well located in Section 33, T-14-S, R-26-E. The well which was tested in the Wolfcamp formation did not have any indications of hydrogen sulfide from this formation. We believe the potential for it on locations in this area are negligible.

Should you need any additional information regarding this issue, please contact me at the address or phone number listed above.

Sincerely,

Deane Durham  
Drilling Engineer