

UNITED STATES M. Oil Cons. Div. Dist. 2
DEPARTMENT OF THE INTERIOR
BUREAU OF LAND MANAGEMENT
1361 W. Grand Avenue
Artesia, NM 88210

APPLICATION FOR PERMIT TO DRILL OR DEEPEN

1a. TYPE OF WORK
DRILL ☒ DEEPEN ☐

b. TYPE OF WELL
OIL WELL ☒ GAS WELL ☐ OTHER ☐

2. NAME OF OPERATOR
CONCHO OIL & GAS CORP. (915-683-7443) GREG WILKES

3. ADDRESS AND TELEPHONE NO.
110 WEST LOUISIANA SUITE 410 MIDLAND, TEXAS (915-683-7443)

4. LOCATION OF WELL (Report location clearly and in accordance with any State requirements.)
At surface
1140' FSL & 330' FWL SECTION 30 T18S-R31E EDDY CO. NM
At proposed prod. zone SAME Shugart, 4-SR-GN-6B

14. DISTANCE IN MILES AND DIRECTION FROM NEAREST TOWN OR POST OFFICE
Approximately 15 miles Southwest of Loco Hills New Mexico

15. DISTANCE FROM PROPOSED LOCATION TO NEAREST PROPERTY OR LEASE LINE, FT. (Also to nearest drill unit line, if any)
330'

16. NO. OF ACRES IN LEASE
160

17. NO. OF ACRES ASSIGNED TO THIS WELL
40

18. DISTANCE FROM PROPOSED LOCATION TO NEAREST WELL, DRILLING, COMPLETED, OR APPLIED FOR, ON THIS LEASE, FT.
1130'

19. PROPOSED DEPTH
4000'

20. ROTARY OR CABLE TOOLS
ROTARY

21. ELEVATIONS (Show whether DF, RT, GR, etc.)
3561' GR. Captain Controlled Water Basin

22. APPROX. DATE WORK WILL START WHEN APPROVED

PROPOSED CASING AND CEMENTING PROGRAM

SIZE OF HOLE	GRADE, SIZE OF CASING	WEIGHT PER FOOT	SETTING DEPTH	QUANTITY OF CEMENT
25"	20"	NA	40'	Cement to surface with Redi-mix
12 1/4"	J-55 8 5/8"	32	800' 750'	450 Sx. circulate cement
7 7/8"	J-55 5 1/2"	15.5	4000'	500 Sx.

1. Drill 25" hole to 40'. Set 40' of 20" conductor and cement to surface with Redi-mix.
2. Drill 12 1/4" hole to 800'. Run and set 800' of 8 5/8 32# J-55 ST&C casing. Cement with 250 Sx. of Class "C" 35/65 POZ = 6% Gel, + 1/4# Flocele/Sx., + 2% CaCl, tail in with 200 Sx. of Class "C" cement + 2% CaCl, circulate cement to surface.
3. Drill 7 7/8" hole to 4000'. Run and set 4000' of 5 1/2" 15.5# J-55 ST&C casing. Cement with 300 Sx. of Class "C" 50/50 POX, + 10% Gel, + 5% Salt, + 3# Gilsonite/Sx., + 1/4# Flocele/Sx., tail in with 200 Sx. of Class "C" cement + fluid loss + dispersant, + 5% Salt. Estimate top of cement 400' from surface.

APPROVAL SUBJECT TO
GENERAL REQUIREMENTS AND
SPECIAL STIPULATIONS
ATTACHED

* Concho Oil & Gas Corp. accepts the responsibility for operating this lease.

IN ABOVE SPACE DESCRIBE PROPOSED PROGRAM: If proposal is to deepen, give data on present productive zone and proposed new productive zone. If proposal is to drill or deepen directionally, give pertinent data on subsurface locations and measured and true vertical depths. Give blowout preventer program, if any.

24.

SIGNED Joe T Janica TITLE Agent DATE 02/10/03

(This space for Federal or State office use)

PERMIT NO. / APPROVAL DATE

Application approval does not warrant or certify that the applicant holds legal or equitable title to those rights in the subject lease which would entitle the applicant to conduct operations thereon.

CONDITIONS OF APPROVAL IF ANY:

APPROVED BY /s/ LESLIE A. THEISS TITLE FIELD MANAGER DATE APR 14 2003

*See Instructions On Reverse Side

APPROVAL FOR 1 YEAR

Title 18 U.S.C. Section 1001, makes it a crime for any person knowingly and willfully to make to any department or agency of the United States any false, fictitious or fraudulent statements or representations as to any matter within its jurisdiction.

DISTRICT I

P.O. Box 1980, Hobbs, NM 88241-1980

State of New Mexico

Energy, Minerals and Natural Resources Department

Form C-102

Revised February 10, 1994

Submit to Appropriate District Office

State Lease - 4 Copies

Fee Lease - 3 Copies

DISTRICT II

P.O. Drawer DD, Artesia, NM 88211-0719

OIL CONSERVATION DIVISION

P.O. Box 2088

Santa Fe, New Mexico 87504-2088

DISTRICT III

1000 Rio Brazos Rd., Aztec, NM 87410

DISTRICT IV

P.O. BOX 2088, SANTA FE, N.M. 87504-2088

WELL LOCATION AND ACREAGE DEDICATION PLAT

☐ AMENDED REPORT

API Number	Pool Code 5300	Pool Name BENSON-QUEEN-GRAYBURG, NORTH
Property Code	Property Name BENSON SHUGART WATERFLOOD UNIT	Well Number 36
OGRID No. 193407	Operator Name CONCHO OIL & GAS CORPORATION	Elevation 3561'

Surface Location

UL or lot No.	Section	Township	Range	Lot Idn	Feet from the	North/South line	Feet from the	East/West line	County
M	30	18-S	31-E		1140'	SOUTH	330'	WEST	EDDY

Bottom Hole Location If Different From Surface

UL or lot No.	Section	Township	Range	Lot Idn	Feet from the	North/South line	Feet from the	East/West line	County
Dedicated Acres 40	Joint or Infill	Consolidation Code	Order No.						

NO ALLOWABLE WILL BE ASSIGNED TO THIS COMPLETION UNTIL ALL INTERESTS HAVE BEEN CONSOLIDATED
OR A NON-STANDARD UNIT HAS BEEN APPROVED BY THE DIVISION

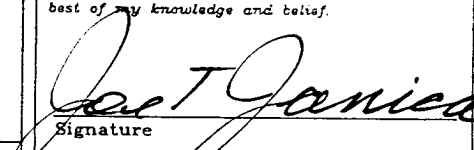
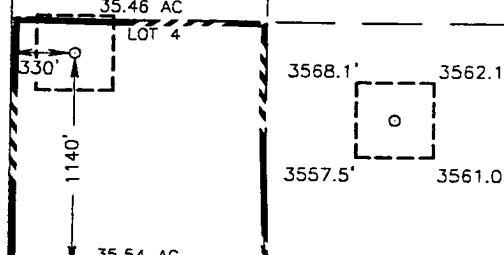
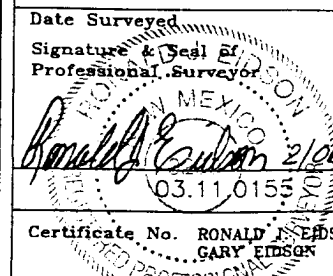
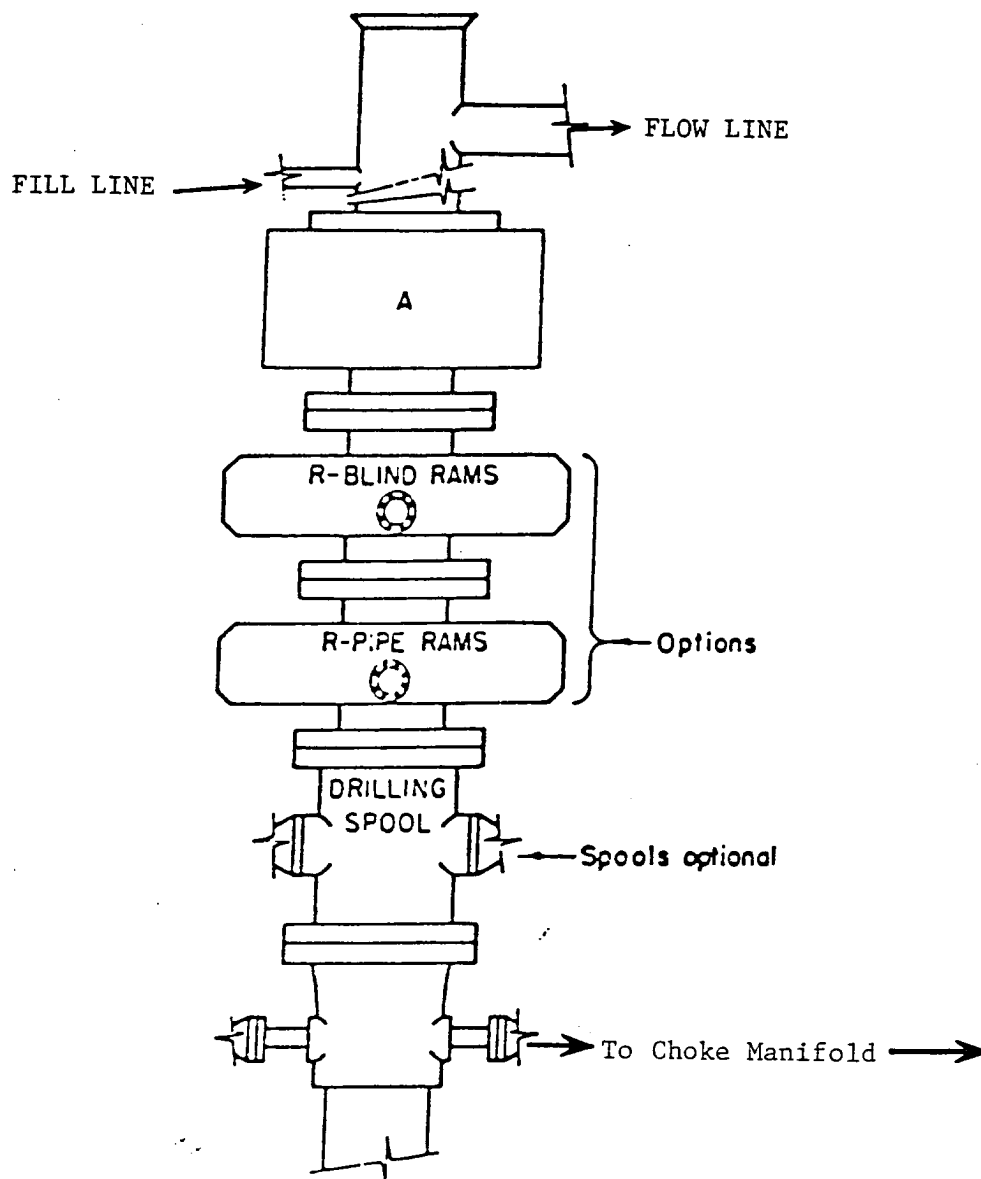
LOT 1						OPERATOR CERTIFICATION I hereby certify the the information contained herein is true and complete to the best of my knowledge and belief.  Signature Joe T. Janica Printed Name Agent Title 02/10/03 Date
35.30 AC LOT 2						
35.38 AC LOT 3						
35.46 AC LOT 4						
						SURVEYOR CERTIFICATION I hereby certify that the well location shown on this plat was plotted from field notes of actual surveys made by me or under my supervision, and that the same is true and correct to the best of my belief. FEBRUARY 05, 2003 Date Surveyed Signature & Seal of Professional Surveyor  03.11.0155 Certificate No. RONALD J. EIDSON 3239 GARY EIDSON 12841

EXHIBIT "A"



ARRANGEMENT SRRA

900 Series
3000 PSI WP

EXHIBIT "E"
SKETCH OF B.O.P. TO BE USED ON

CONCHO OIL & GAS CORP.
BENSON SHUGART WATERFLOOD UNIT # 36
UNIT "M" SECTION 30
T18S-R31E EDDY CO. NM

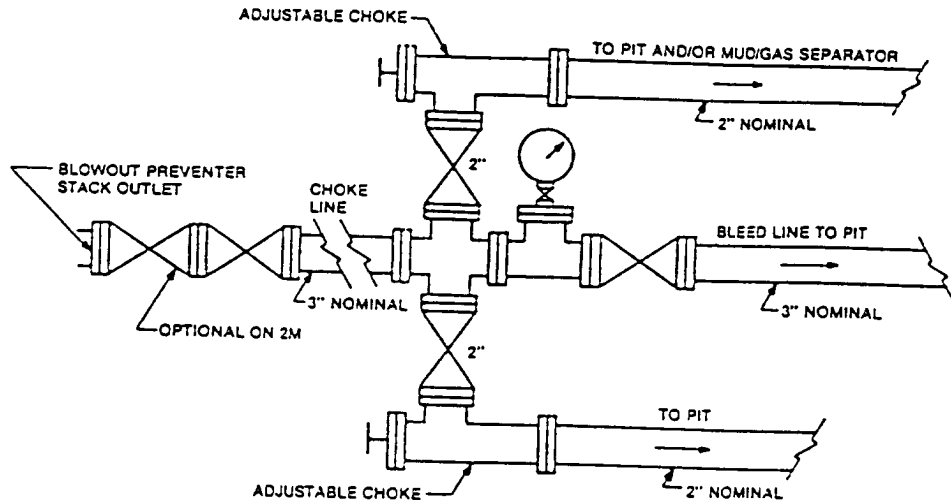


FIGURE K4-1. Typical choke manifold assembly for 2M and 3M rated working pressure service — surface installation.

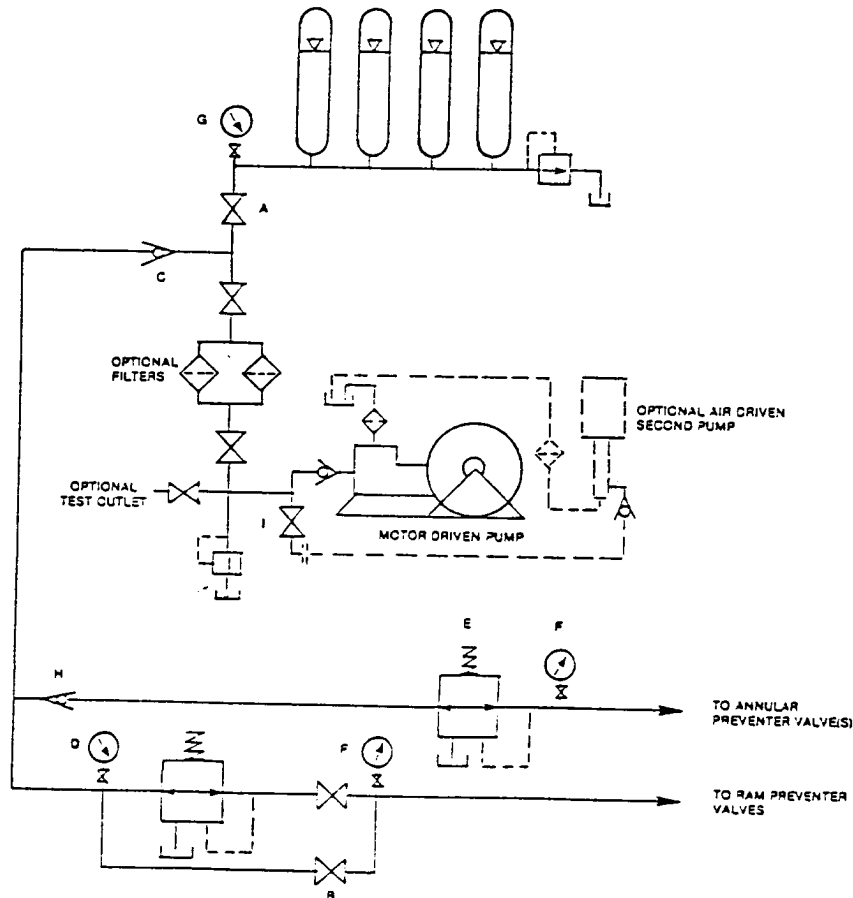


FIGURE K6-1. The schematic sketch of an accumulator system shows required and optional components.

EXHIBIT "E-1"
CHOKE MANIFOLD & CLOSING UNIT

CONCHO OIL & GAS CORP.
BENSON SHUGART WATERFLOOD UNIT # 36
UNIT "M" SECTION 30
T18S-R31E EDDY CO. NM