

PLEASE EXPEDITE

UNITED STATES
DEPARTMENT OF THE INTERIOR
BUREAU OF LAND MANAGEMENT
Oil & Gas
DIV-Dist. 2
1001 W. Grand Avenue
Artesia, NM 88210ONLINE APPROVED
OMB NO. 1004-0136
Expires: February 28, 1995

APPLICATION FOR PERMIT TO DRILL OR DEEPEN

1A. TYPE OF WORK

DRILL ☒DEEPEN ☐

B. TYPE OF WELL

OIL
WELL ☒GAS
WELL ☐

OTHER

168489

SINGLE
ZONE ☒MULTIPLE
ZONE ☐

2. NAME OF OPERATOR

RICKS EXPLORATION, INC. (GREG WILKES 915-683-7443)

3. ADDRESS AND TELEPHONE NO.

110 WEST LOUISIANA SUITE 410 MIDLAND, TEXAS 79701 (915-683-7443)

4. LOCATION OF WELL (Report location clearly and in accordance with any State requirements.)*

At surface

1980' FNL & 1980' FEL SECTION 27 T18S-R31E
At proposed prod. zone SAME

14. DISTANCE IN MILES AND DIRECTION FROM NEAREST TOWN OR POST OFFICE*

Approximately 12 miles Southeast of Loco Hills New Mexico

15. DISTANCE FROM PROPOSED*

LOCATION TO NEAREST

PROPERTY OR LEASE LINE, FT.

(Also to nearest drg. unit line, if any) 1980'

18. DISTANCE FROM PROPOSED LOCATION*

TO NEAREST WELL, DRILLING COMPLETED,

OR APPLIED FOR, ON THIS LEASE, FT. 330'

21. ELEVATIONS (Show whether DF, RT, GR, etc.)

3637' GR.

23.

PROPOSED CASING AND CEMENTING PROGRAM

SIZE OF HOLE	GRADE, SIZE OF CASING	WEIGHT PER FOOT	SETTING DEPTH	QUANTITY OF CEMENT
25"	Conductor	NA	40'	Cement to surface with Redi-mix.
WITNESS 17 1/2"	H-40 13 3/8"	48	650' WITNESS	300 Sx. circulate cement to surface
12 1/4"	J-55 8 5/8"	32	4100'	1200 Sx. " " "
7 7/8"	N-80 5 1/2"	17	8500'	475 Sx. Estimate top of cement 5000'

1. Drill 25" hole to 40'. Set 40' of 20" conductor and cement to surface with Redi-mix.
2. Drill 17 1/2" hole to 650'. Run and set 650' of 13 3/8" 48# H-40 ST&C casing. Cement with 300 Sx. of Light Class "C" cement + 2% CaCl, tail in with 200 Sx. of Class "C" cement + 1/2# Flocele/Sx, + 2% CaCl, circulate cement to surface.
3. Drill 12 1/4" hole to 4100'. Run and set 4100' of 8 5/8" 32# J-55 ST&C casing. Cement with 1000 Sx. of Class "C" Light weight cement + additives, tail in with 200 Sx. of Class "C" cement + 1% CaCl, circulate cement to surface.
4. Drill 7 7/8" hole to 8500'. Run and set 8500' of 5 1/2" 17# N-80 LT&C casing. Cement with 250 Sx. of Class "H" Light weight cement + additives, tail on with 225 Sx. of Class "H" cement + additives, estimate top of cement 5000' from surface. Cement top to be at least 500' above the top of any productive interval.

CAPITAN CONTROLLED WATER BASIN

APPROVAL SUBJECT TO
GENERAL REQUIREMENTS
AND SPECIAL STIPULATIONS

APPROVED

ABOVE SPACE DESCRIBE PROPOSED PROGRAM: If proposal is to deepen, give data on present productive zone and proposed productive zone. If proposal is to drill or open directionally, give pertinent data on subsurface locations and measured and true vertical depths. Give blowout prevention program, if any.

SIGNED

Agent

DATE 04/18/03

(This space for Federal or State office use)

PERMIT NO.

Application approval does not warrant or certify that the applicant holds legal or equitable title to those rights in the subject lands which would entitle the applicant to conduct operations thereon.

CONDITIONS OF APPROVAL IF ANY:

APPROVED BY /s/ Leslie A. Theiss

FIELD MANAGER

DATE 09 JUN 2003

*See Instructions On Reverse Side

APPROVAL FOR 1 YEAR

1e 18 U.S.C. Section 1001, makes it a crime for any person knowingly and willfully to make to any department or agency of the United States any false, fictitious or fraudulent statements or representations as to any matter within its jurisdiction.

DISTRICT I
1825 N. French Dr., Hobbs, NM 88240
DISTRICT II
811 South First, Artesia, NM 88210

DISTRICT III
1000 Rio Brazos Rd., Aztec, NM 87410
DISTRICT IV
2040 South Pacheco, Santa Fe, NM 87505

State of New Mexico
Energy, Minerals and Natural Resources Department

Form C-102
Revised March 17, 1999

Submit to Appropriate District Office
State Lease - 4 Copies
Fee Lease - 3 Copies

OIL CONSERVATION DIVISION

2040 South Pacheco
Santa Fe, New Mexico 87505

☐ AMENDED REPORT

WELL LOCATION AND ACREAGE DEDICATION PLAT

API Number	Pool Code	Pool Name
	56400	SHUGART-BONE SPRING
Property Code	Property Name	Well Number
	GREENWOOD PRE-GRAYBURG UNIT	20
OGRID No.	Operator Name	Elevation
168489	RICKS EXPLORATION INC.	3637'

Surface Location

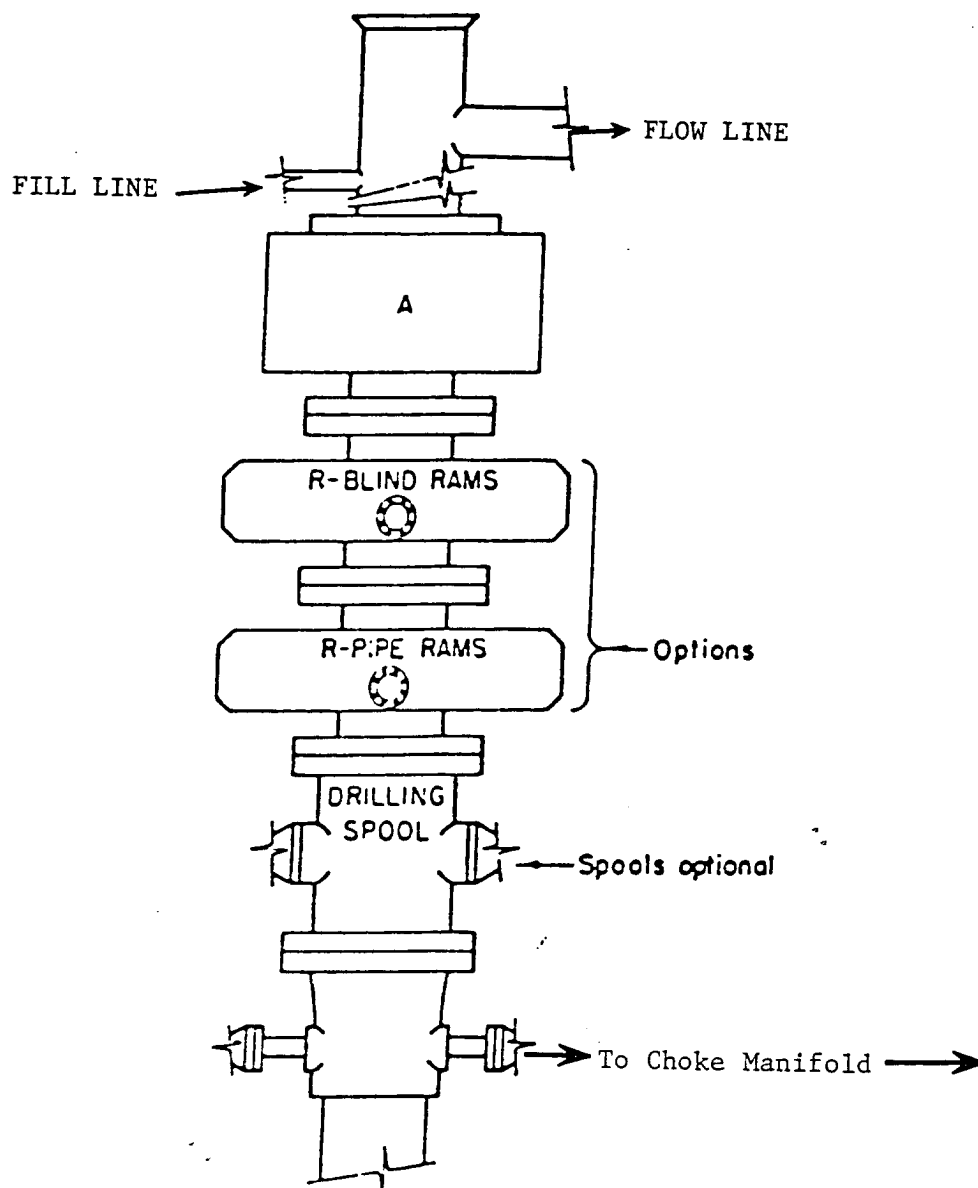
UL or lot No.	Section	Township	Range	Lot Idn	Feet from the	North/South line	Feet from the	East/West line	County
G	27	18 S	31 E		1980	NORTH	1980	EAST	EDDY

Bottom Hole Location If Different From Surface

UL or lot No.	Section	Township	Range	Lot Idn	Feet from the	North/South line	Feet from the	East/West line	County
Dedicated Acres	Joint or Infill	Consolidation Code	Order No.						
40									

NO ALLOWABLE WILL BE ASSIGNED TO THIS COMPLETION UNTIL ALL INTERESTS HAVE BEEN CONSOLIDATED
OR A NON-STANDARD UNIT HAS BEEN APPROVED BY THE DIVISION

	OPERATOR CERTIFICATION <i>I hereby certify the the information contained herein is true and complete to the best of my knowledge and belief.</i> Signature Joe T. Janica Printed Name Agrnt Title 04/18/03 Date	
	SURVEYOR CERTIFICATION <i>I hereby certify that the well location shown on this plat was plotted from field notes of actual surveys made by me or under my supervision and that the same is true and correct to the best of my belief.</i> APRIL 9, 2003 Date Surveyed Signature & Seal of Professional Surveyor NEW MEXICO W.O. No. 3197A Certificate No. Gary L. Jones 7977 BASIN SURVEYS	

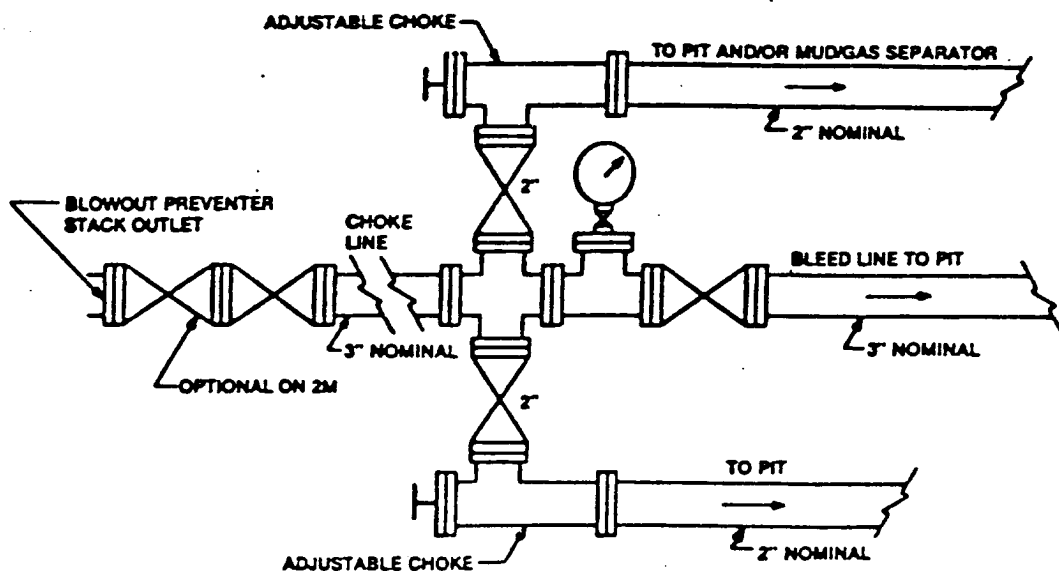


ARRANGEMENT SRRA

900 Series
3000 PSI WP

EXHIBIT "E"
SKETCH OF B.O.P. TO BE USED ON

RICKS EXPLORATION, INC.
GREENWOOD PRE-GRAYBURG UNIT # 20
UNIT "G" SECTION 27
T18S-R31E EDDY CO. NM



Typical choke manifold assembly for 3M WP system

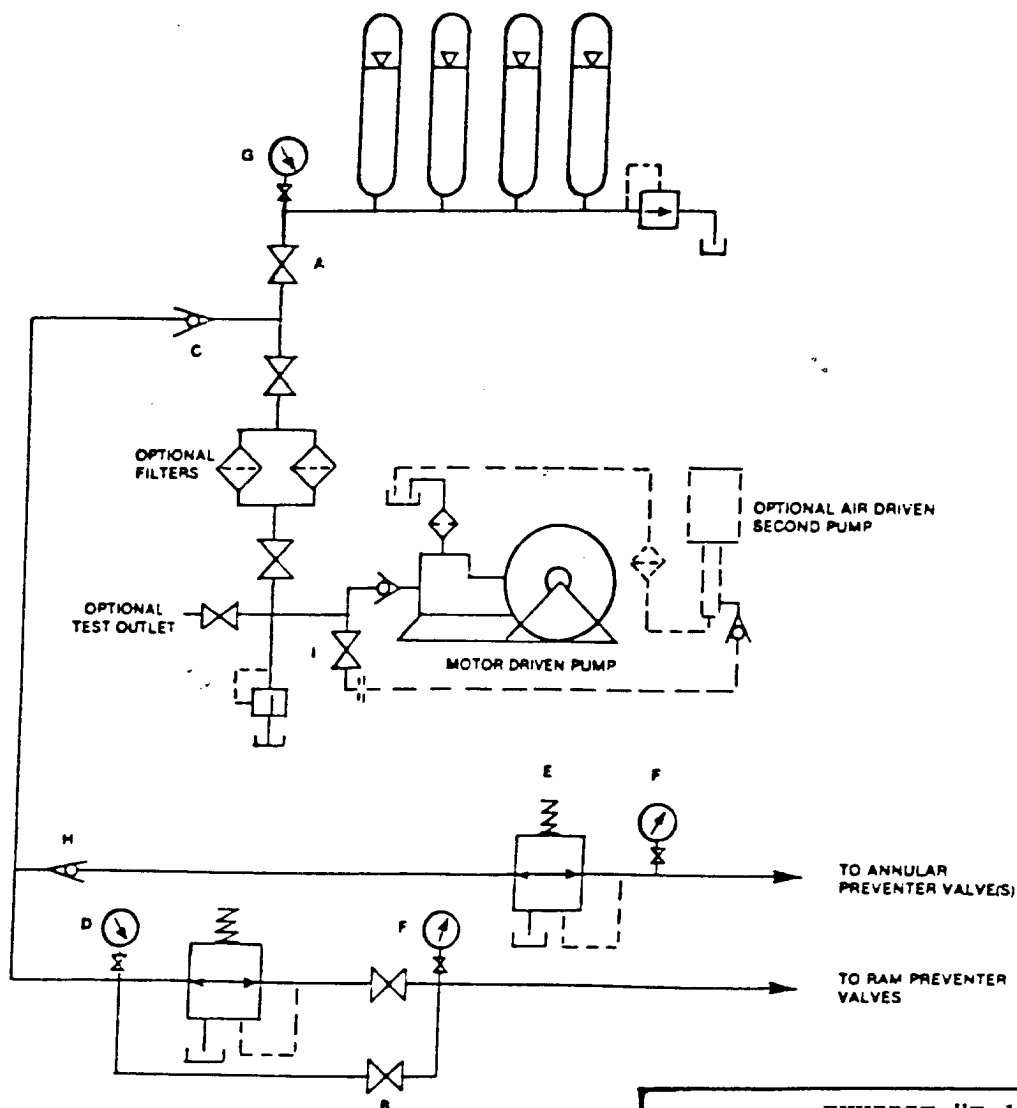


EXHIBIT "E-1"
CHOKE MANIFOLD & CLOSING UNIT

RICKS EXPLORATION, INC.
GREENWOOD PRE-GRAYBURG UNIT # 20
UNIT "G" SECTION 27
T18S-R31E EDDY CO. NM