

the 18 U.S.C. Section 1001, makes it a crime for any person knowingly and willfully to make to any department or agency of the United States any false, fictitious or fraudulent statement.

DISTRICT I

1825 N. French Dr., Hobbs, NM 88240

DISTRICT II

811 South First, Artesia, NM 88210

DISTRICT III

1000 Rio Brazos Rd., Aztec, NM 87410

DISTRICT IV

2040 South Pacheco, Santa Fe, NM 87505

State of New Mexico

Energy, Minerals and Natural Resources Department

Form C-102

Revised March 17, 1999

Submit to Appropriate District Office

State Lease - 4 Copies

Fee Lease - 3 Copies

OIL CONSERVATION DIVISION

2040 South Pacheco

Santa Fe, New Mexico 87505

☐ AMENDED REPORT

WELL LOCATION AND ACREAGE DEDICATION PLAT

API Number	Pool Code 85300	Pool Name SHUGART - MORROW GAS
Property Code	Property Name GREENWOOD PRE-GRAYBURG UNIT	Well Number 22
OGRD No. 168489	Operator Name RICKS EXPLORATION INC.	Elevation 3642'

Surface Location

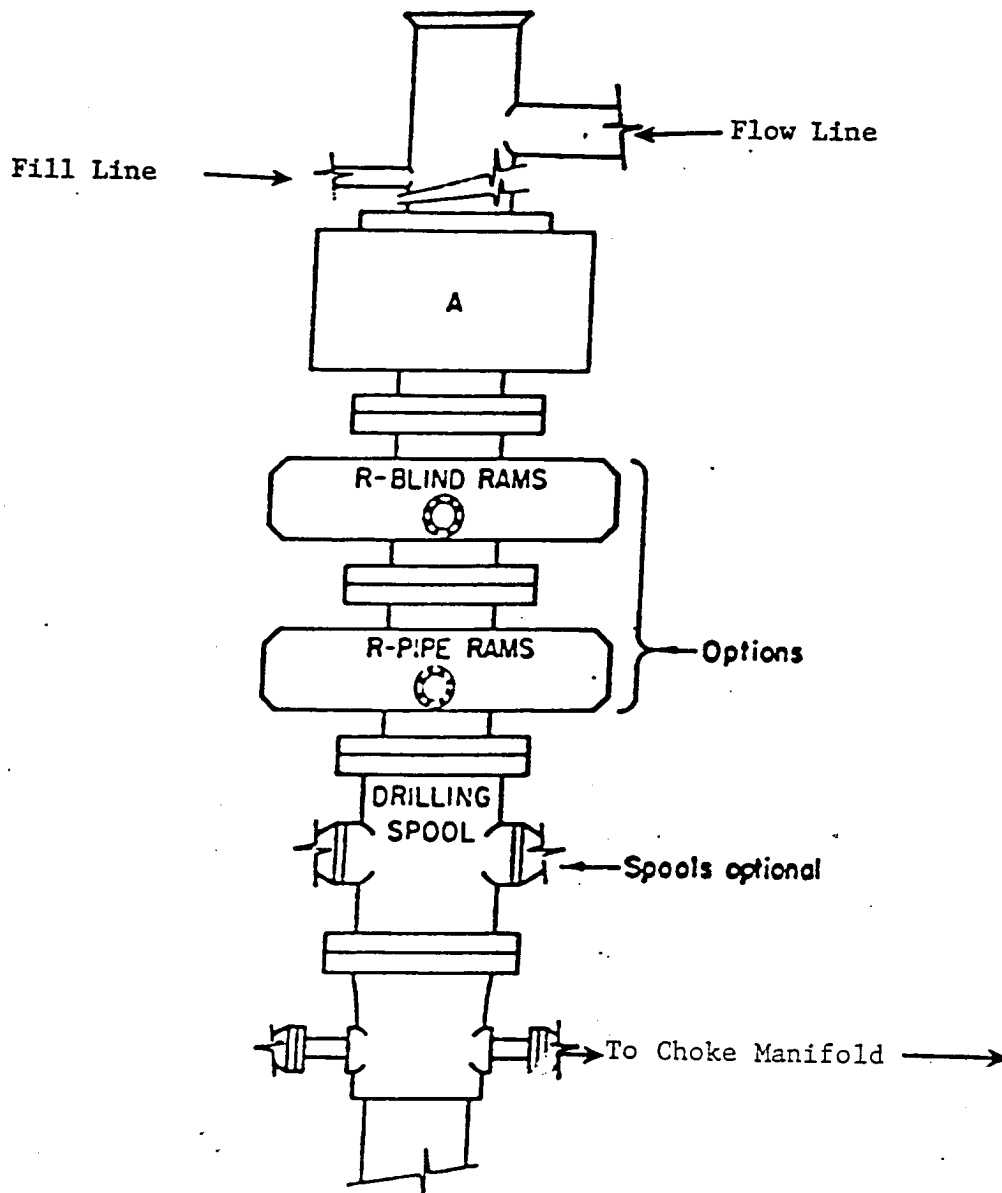
UL or lot No.	Section	Township	Range	Lot Idn	Feet from the	North/South line	Feet from the	East/West line	County
D	35	18 S	31 E		660	NORTH	910	WEST	EDDY

Bottom Hole Location If Different From Surface

UL or lot No.	Section	Township	Range	Lot Idn	Feet from the	North/South line	Feet from the	East/West line	County
Dedicated Acres 320	Joint or Infill	Consolidation Code	Order No.						

NO ALLOWABLE WILL BE ASSIGNED TO THIS COMPLETION UNTIL ALL INTERESTS HAVE BEEN CONSOLIDATED
OR A NON-STANDARD UNIT HAS BEEN APPROVED BY THE DIVISION

	OPERATOR CERTIFICATION I hereby certify the the information contained herein is true and complete to the best of my knowledge and belief. Signature: <i>Joe T. Janica</i> Printed Name: Joe T. Janica Title: Agent Date: 04/18/03	
	SURVEYOR CERTIFICATION I hereby certify that the well location shown on this plat was plotted from field notes of actual surveys made by me or under my supervision, and that the same is true and correct to the best of my belief. Date Surveyed: APRIL 9, 2003 Signature: <i>[Signature]</i> Professional Surveyor: <i>[Signature]</i> W.C. No. 5199A Certificate No. Gary Jones 7977 PROFESSIONAL LAND SURVEYORS	
	EXHIBIT "A"	
	(Empty space for additional notes or signatures)	



ARRANGEMENT SRRA

1500 Series
5000# Working Pressure

EXHIBIT "E"
SKETCH OF W.B.O.P. TO BE USED ON

RICKS EXPLORATION, INC.
GREENWOOD PRE-GRAYBURG UNIT # 22
UNIT "D" SECTION 35
T18S-R31E EDDY CO. NM

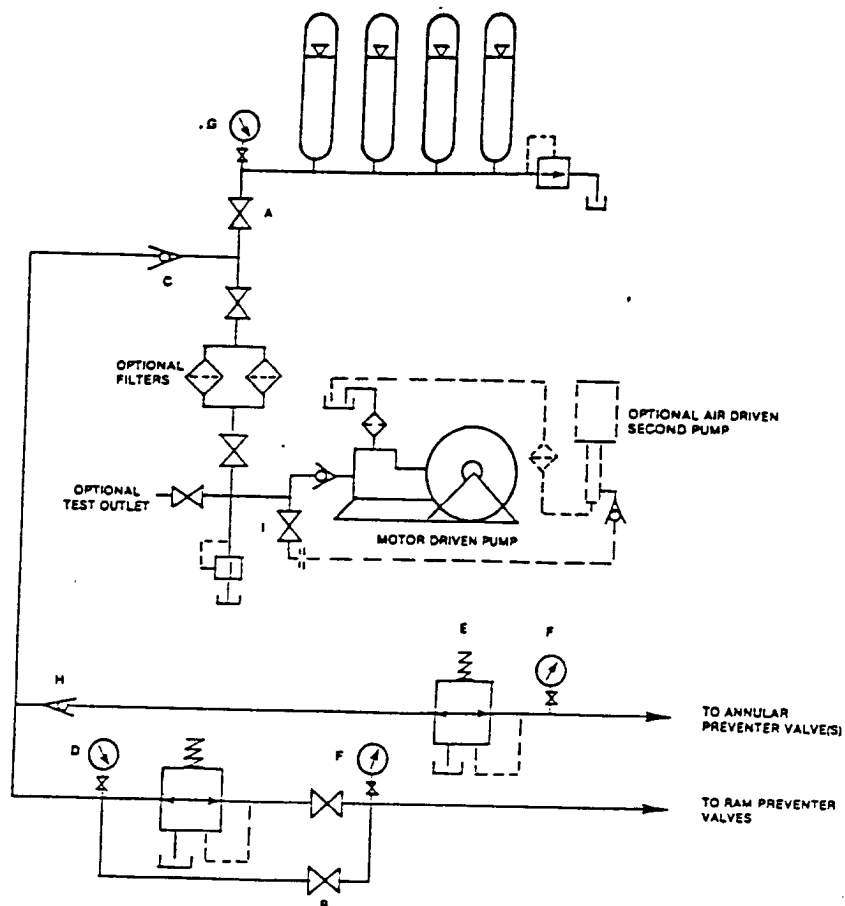


FIGURE K4-1. The schematic sketch of an accumulator system shows required and optional components.

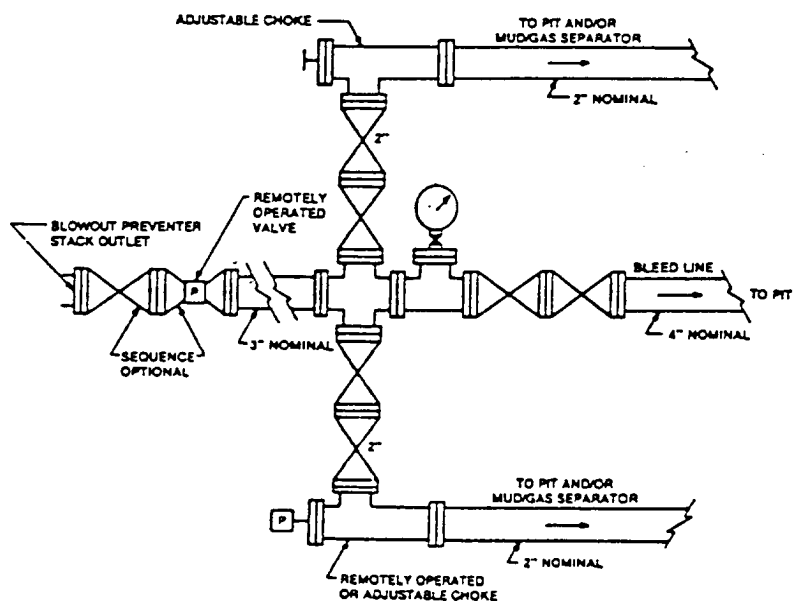


FIGURE K4-2. Typical choke manifold assembly for 5M rated working pressure service — surface installation.

EXHIBIT "E-1"
CHOKE MANIFOLD & CLOSING UNIT

RICKS EXPLORATION, INC.
GREENWOOD PRE-GRAYBURG UNIT # 22
UNIT "D" SECTION 35
T18S-R31E EDDY CO. NM