

NEW MEXICO OIL CONSERVATION COMMISSION
WELL LOCATION AND ACREAGE DEDICATION PLAT

Form C-102
Supersedes C-128
Effective 1-1-85

All distances must be from the outer boundaries of the Section.

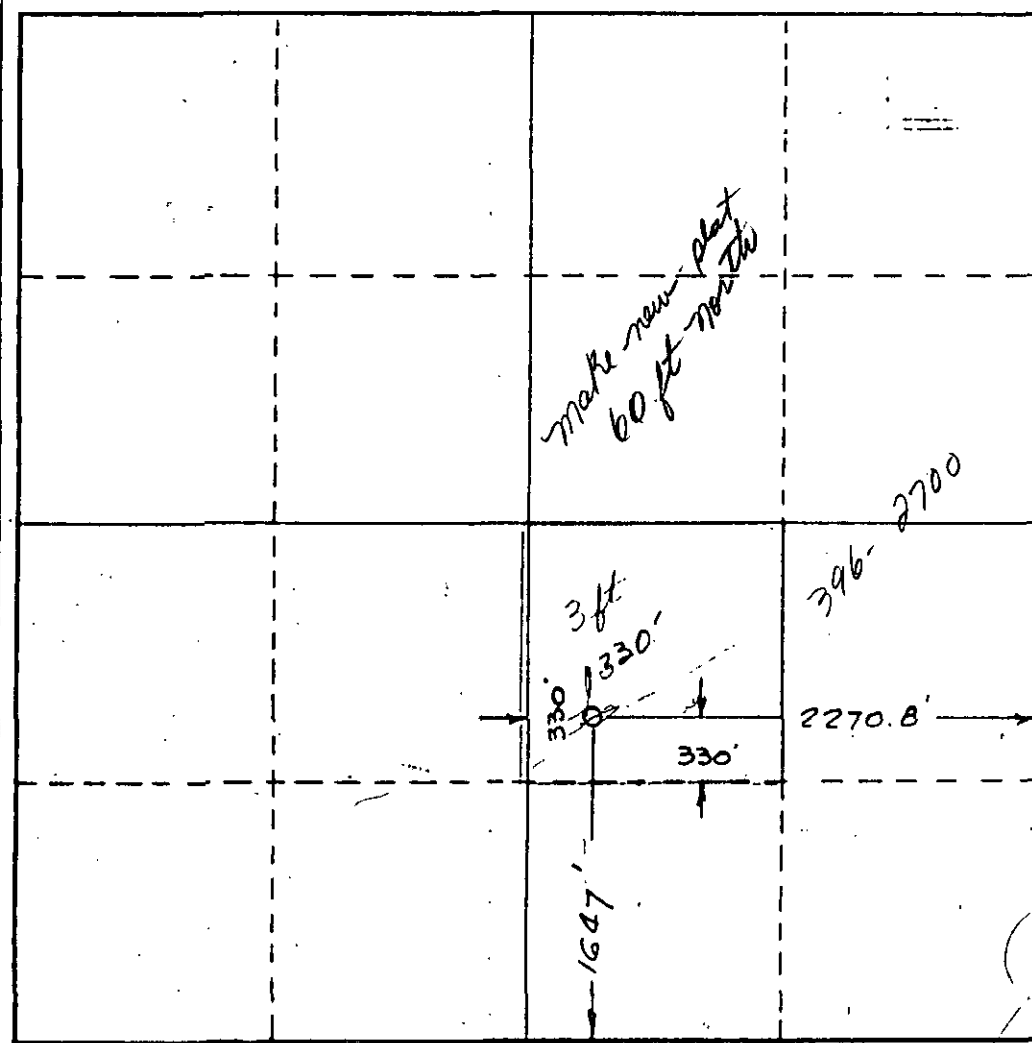
Operator HARLAN OIL COMPANY		Lease ANGELL STATE		Well No. 5
Unit Letter J	Section 21	Township 19 South	Range 28 East	County EDDY
Actual Footage Location of Well: 1647 feet from the South line and 2270.8 feet from the East line				
Ground Level Elev. 3465	Producing Formation Seven Rivers	Pool Millman Seven Rivers East	Dedicated Acreage: 40 Acres	

1. Outline the acreage dedicated to the subject well by colored pencil or hatchure marks on the plat below.
2. If more than one lease is dedicated to the well, outline each and identify the ownership thereof (both as to working interest and royalty).
3. If more than one lease of different ownership is dedicated to the well, have the interests of all owners been consolidated by communitization, unitization, force-pooling, etc?

☐ Yes ☐ No If answer is "yes," type of consolidation _____

If answer is "no," list the owners and tract descriptions which have actually been consolidated. (Use reverse side of this form if necessary.) _____

No allowable will be assigned to the well until all interests have been consolidated (by communitization, unitization, forced-pooling, or otherwise) or until a non-standard unit, eliminating such interests, has been approved by the Commission.



CERTIFICATION

I hereby certify that the information contained herein is true and complete to the best of my knowledge and belief.

Name
Norothy Hammond
Position
Secretary

Company
Harlan Oil Company

Date
June 24, 1981

I hereby certify that the well location shown on this plat was plotted from field notes of actual surveys made by me or under my supervision, and that the same is true and correct to the best of my knowledge and belief.

Date Surveyed
March 25 & 26, 1981

Registered Professional Engineer
and/or Land Surveyor

W. W. Shearn

Certificate No.
1559