

District I*
1625 N French Dr., Hobbs, NM 88240
Phone: (575) 393-6161 Fax: (575) 393-0720
District II
811 S. First St., Artesia, NM 88210
Phone: (575) 748-1283 Fax: (575) 748-9720
District III
1000 Rio Brazos Road, Aztec, NM 87410
Phone: (505) 334-6178 Fax: (505) 334-6170
District IV
1220 S. St. Francis Dr., Santa Fe, NM 87505
Phone: (505) 476-3460 Fax: (505) 476-3462

NM OIL CONSERVATION
ARTESIA DISTRICT

OCT 13 2015

RECEIVED

State of New Mexico

Energy Minerals and Natural Resources

Oil Conservation Division

1220 South St. Francis Dr.

Santa Fe, NM 87505

Form C-101
Revised July 18, 2013

☐ AMENDED REPORT

APPLICATION FOR PERMIT TO DRILL, RE-ENTER, DEEPEN, PLUGBACK, OR ADD A ZONE

1. Operator Name and Address BC Operating, Inc. P.O. Box 50820 Midland, Texas 79710		2. OGRID Number 160825
3. Property Code 315313		4. API Number 30-015-43446
5. Property Name Man Cave 6 State		6. Well No. 2H

7. Surface Location

UL - Lot	Section	Township	Range	Lot Idn	Feet from	N/S Line	Feet From	E/W Line	County
C	7	23S	26E		240	North	2150	West	Eddy

8. Proposed Bottom Hole Location

UL - Lot	Section	Township	Range	Lot Idn	Feet from	N/S Line	Feet From	E/W Line	County
3	6	23S	26E		240	North	2150	West	Eddy

9. Pool Information

WC-015 52326060	Pool Name Wolcamp (GAS)	Pool Code 98770
-----------------	----------------------------	--------------------

Additional Well Information

11. Work Type New Well	12. Well Type Gas	13. Cable/Rotary Rotary	14. Lease Type State	15. Ground Level Elevation 3420'
16. Multiple No	17. Proposed Depth 14,119' MD/9000' TVD	18. Formation Wolcamp	19. Contractor TBD	20. Spud Date 02/01/2016
Depth to Ground water		Distance from nearest fresh water well		Distance to nearest surface water

☒ We will be using a closed-loop system in lieu of lined pits

21. Proposed Casing and Cement Program

Type	Hole Size	Casing Size	Casing Weight/ft	Setting Depth	Sacks of Cement	Estimated TOC
Surface	16"	13 3/8"	48#	400'	400	0'
Intermediate	12 1/4"	9 5/8"	40#	5100'	1400	0'
Production	8 3/4"	5 1/2"	17#	14,119'	1800	5000'

Casing/Cement Program: Additional Comments

--

22. Proposed Blowout Prevention Program

Type	Working Pressure	Test Pressure	Manufacturer
Double Ram Annular	3000#	2000#	Hydrill/Shaeffer

23. I hereby certify that the information given above is true and complete to the best of my knowledge and belief. I further certify that I have complied with 19.15.14.9 (A) NMAC <input checked="" type="checkbox"/> and/or 19.15.14.9 (B) NMAC <input checked="" type="checkbox"/> , if applicable. Signature: Pam Stevens		OIL CONSERVATION DIVISION	
Printed name: Pam Stevens		Approved By: [Signature]	
Title: Regulatory Analyst		Title: DST #Supervisor	
E-mail Address: pstevens@bcoperating.com		Approved Date: 11/5/2015	
Date: 09/30/2015		Expiration Date: 11/5/2017	
Phone: 432-684-9696		Conditions of Approval Attached	

District I
1625 N. French Dr., Hobbs, NM 88240
Phone: (575) 393-6161 Fax: (575) 393-0720
District II
811 S. First St., Artesia, NM 88210
Phone: (575) 748-1283 Fax: (575) 748-9720
District III
1000 Rio Brazos Road, Aztec, NM 87410
Phone: (505) 334-6178 Fax: (505) 334-6170
District IV
1220 S. St. Francis Dr., Santa Fe, NM 87505
Phone: (505) 476-3460 Fax: (505) 476-3462

State of New Mexico
Energy, Minerals & Natural Resources Department
OIL CONSERVATION DIVISION
1220 South St. Francis Dr.
Santa Fe, NM 87505

Form C-102
Revised August 1, 2011
Submit one copy to appropriate
District Office
☐ AMENDED REPORT

WELL LOCATION AND ACREAGE DEDICATION PLAT

¹ API Number 30-015-43446		² Pool Code 98170		³ Pool Name Wildcat, Wolfcamp (6AS)	
⁴ Property Code 315313		⁵ Property Name MAN CAVE 6 STATE			⁶ Well Number 2H
⁷ OGRID No. 160825		⁸ Operator Name B.C. OPERATING, INC.			⁹ Elevation 3420'

¹⁰ Surface Location

UL or lot no.	Section	Township	Range	Lot Idn	Feet from the	North/South line	Feet from the	East/West line	County
C	7	T23S	R26E		240'	NORTH	2150'	WEST	EDDY

¹¹ Bottom Hole Location If Different From Surface

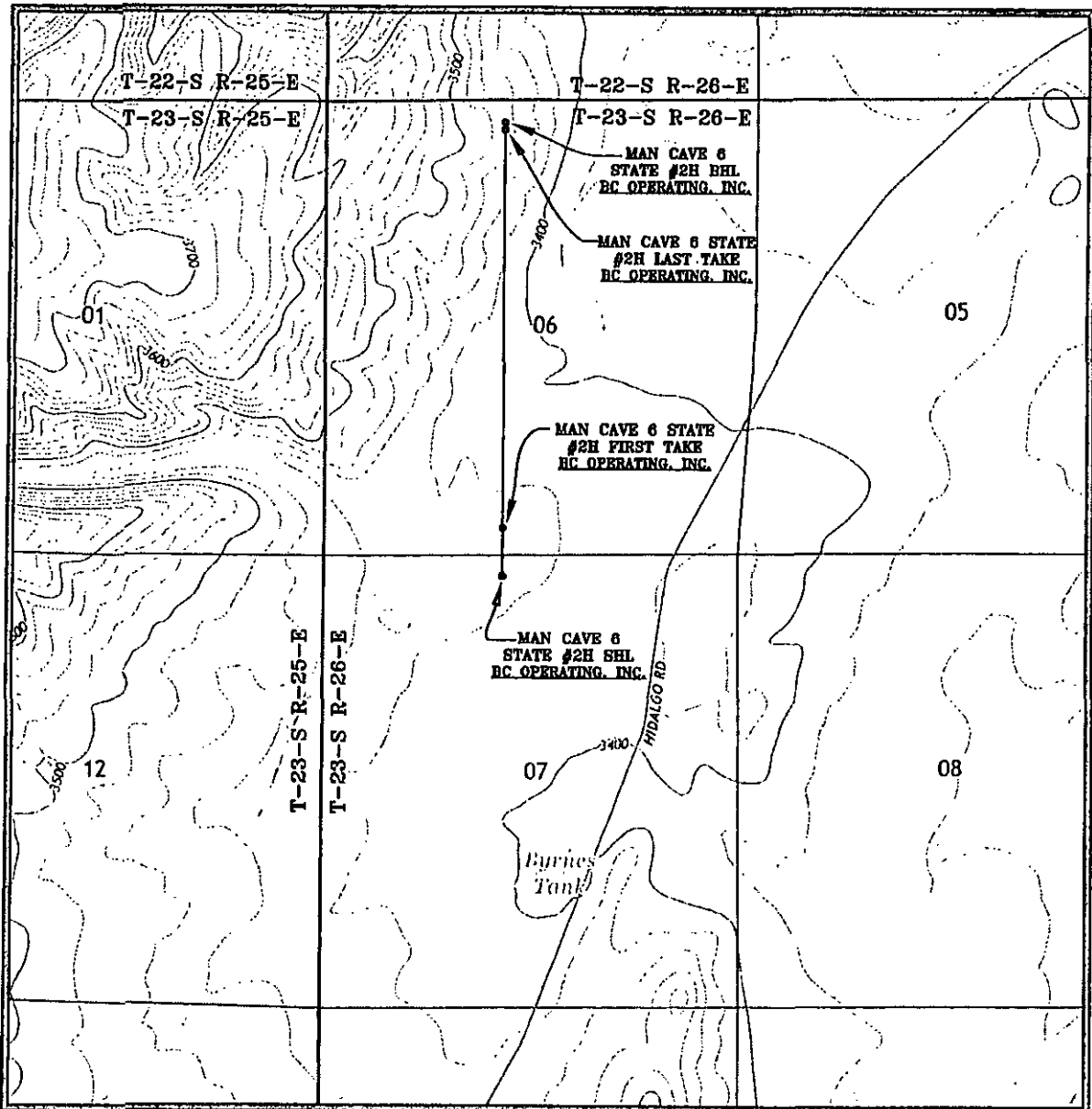
UL or lot no.	Section	Township	Range	Lot Idn	Feet from the	North/South line	Feet from the	East/West line	County
3	6	T23S	R26E		240'	NORTH	2150'	WEST	EDDY

¹² Dedicated Acres 320.00	¹³ Joint or Infill 313.48	¹⁴ Consolidation Code (99948)	¹⁵ Order No.
---	---	---	-------------------------

No allowable will be assigned to this completion until all interests have been consolidated or a non-standard unit has been approved by the division.

<p>¹⁶</p>		<p>CORNER COORDINATES NAD 83, SPCS NM EAST A - Y: 487737.38 / X: 539106.59 B - Y: 487774.24 / X: 541645.91 C - Y: 482416.90 / X: 541589.19 D - Y: 482392.07 / X: 539113.81 T22S-R26E SECTION 31</p> <p>BOTTOM HOLE LOCATION 240' FNL 2150' FVL, SECTION 6 NAD 83, SPCS NM EAST Y: 487528.57 / X: 541257.16 LAT: 32.34028745N / LON: 104.33359347W NAD 27, SPCS NM EAST Y: 487470.14 / X: 500075.93 LAT: 32.34017123N / LON: 104.33308750W</p> <p>LAST TAKE POINT 330' FNL 2150' FVL, SECTION 6 NAD 83, SPCS NM EAST Y: 487438.57 / X: 541257.40 LAT: 32.34004004N / LON: 104.33359268W NAD 27, SPCS NM EAST Y: 487380.14 / X: 500076.16 LAT: 32.33992382N / LON: 104.33308672W</p> <p>FIRST TAKE POINT 330' FSL 2150' FVL, SECTION 6 NAD 83, SPCS NM EAST Y: 482743.66 / X: 541263.82 LAT: 32.32713440N / LON: 104.33357188W NAD 27, SPCS NM EAST Y: 482685.37 / X: 500082.47 LAT: 32.32701814N / LON: 104.33306635W</p> <p>SURFACE HOLE LOCATION 240' FNL 2150' FVL, SECTION 7 NAD 83, SPCS NM EAST Y: 482173.52 / X: 541263.17 LAT: 32.32556716N / LON: 104.33357398W NAD 27, SPCS NM EAST Y: 482115.25 / X: 500081.81 LAT: 32.32545090N / LON: 104.33306850W</p> <p>CORNER COORDINATES NAD 27, SPCS NM EAST A - Y: 487678.99 / X: 497925.40 B - Y: 487715.80 / X: 500464.68 C - Y: 482358.61 / X: 500407.83 D - Y: 482333.84 / X: 497932.49</p>		<p>¹⁷ OPERATOR CERTIFICATION I hereby certify that the information contained herein is true and complete to the best of my knowledge and belief, and that this organization either owns a working interest or unless mineral interest in the land including the proposed bottom hole location or has a right to drill this well at this location pursuant to a contract with an owner of such a mineral or working interest, or to a voluntary pooling agreement or a compulsory pooling order heretofore entered by the division.</p> <p><i>Pam Stevens</i> 09/30/15 Signature Date Pam Stevens Printed Name pstevens@bcoperating.com E-mail Address</p> <p>¹⁸ SURVEYOR CERTIFICATION I hereby certify that the well location shown on this plat was plotted from field notes of actual surveys made by me or under my supervision, and that the same is true and correct to the best of my belief.</p> <p>SEPTEMBER 24, 2015 Date of Survey Signature and Seal of Professional Surveyor <i>Lloyd P. Short</i> Certificate Number LLOYD P. SHORT 21653 NEW MEXICO PROFESSIONAL SURVEYOR</p>	
----------------------	--	--	--	--	--

LOCATION VERIFICATION MAP

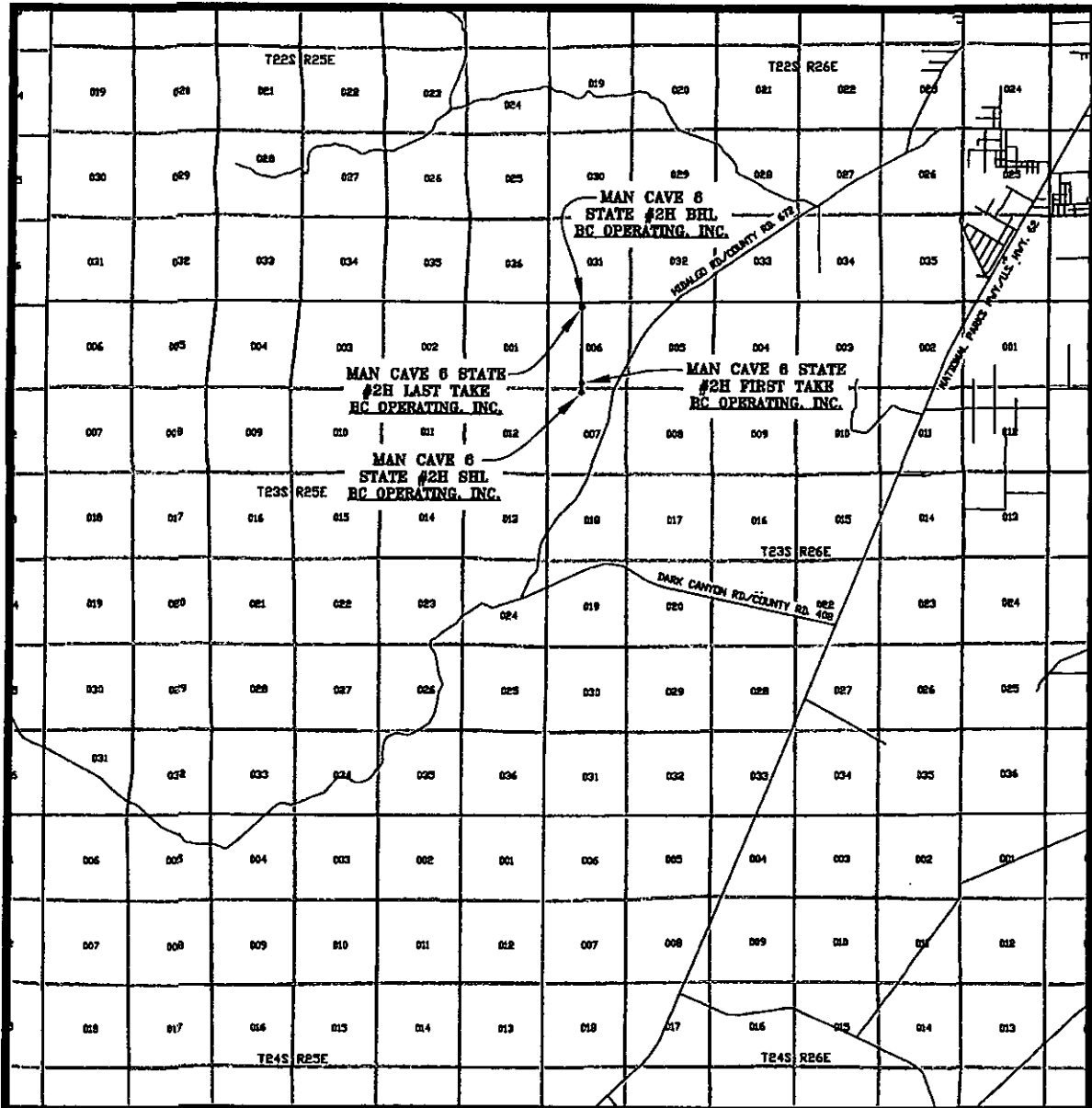


SEC. 7 TWP. 23 S RGE. 26 E
 SURVEY: N.M.P.M.
 COUNTY: EDDY
 DESCRIPTION: 240' FNL & 2150' FWL
 ELEVATION: 3420'
 OPERATOR: B.C. OPERATING, INC.
 LEASE: MAN CAVE 6 STATE
 U.S.G.S. TOPOGRAPHIC MAP: KITCHEN COVE, N.M.

SCALE: 1" = 2000'
 CONTOUR INTERVAL: 20'

PREPARED BY:
 R-SQUARED GLOBAL, LLC
 1309 LOUISVILLE AVENUE, MONROE, LA 71201
 318-323-6900 OFFICE
 JOB No. R3589_002

VICINITY MAP



SEC. 7 TWP. 23 S RGE. 26 E
 SURVEY: N.M.P.M.
 COUNTY: EDDY
 DESCRIPTION: 240' FNL & 2150' FWL
 ELEVATION: 3420'
 OPERATOR: B.C. OPERATING, INC.
 LEASE: MAN CAVE 6 STATE
 U.S.G.S. TOPOGRAPHIC MAP: KITCHEN COVE, N.M.

SCALE: 1" = 2 MILES

PREPARED BY:
 R-SQUARED GLOBAL, LLC
 1309 LOUISVILLE AVENUE, MONROE, LA 71201
 318-323-6900 OFFICE
 JOB No. R3589_002

NEW MEXICO OIL CONSERVATION DIVISION
DISTRICT 2 OFFICE
811 S. FIRST
ARTESIA, NM 88210
(575)748-1283

CONDITIONS OF APPROVAL:

NAME OF OPERATOR: BC. Operating
WELL NAME & NUMBER: MAN CAVE Co State 2H
30-015 - 43446

1. Trucking companies being used to haul oilfield waste to disposal facilities - commercial or private- shall have an approved NMOCD C-133 Permit. A copy of this permit shall be available in each truck used to transport waste products. It is the responsibility of the operator as well as the contractor to verify that this permit is in place. Drivers shall make permit available upon request of an OCD inspector. It is the responsibility of the operator to see to it that waste from their wells is being disposed of in a proper manner.
2. Once well is spud, to prevent groundwater contamination through whole or partial conduits from the surface, the operator shall drill without interruption through the freshwater zone or zones and shall immediately set in cement the water protection string.

INITIALS RD
DATE 11/5/2015