

District I  
1625 N. French Dr., Hobbs, NM 88240  
Phone: (575) 393-6161 Fax: (575) 393-0720  
District II  
811 S. First St., Artesia, NM 88210  
Phone: (575) 748-1283 Fax: (575) 748-9720  
District III  
1000 Rio Brazos Road, Aztec, NM 87410  
Phone: (505) 334-6178 Fax: (505) 334-6170  
District IV  
1220 S. St. Francis Dr., Santa Fe, NM 87505  
Phone: (505) 476-3460 Fax: (505) 476-3462

State of New Mexico  
Energy, Minerals & Natural Resources Department  
OIL CONSERVATION DIVISION  
1220 South St. Francis Dr.  
Santa Fe, NM 87505

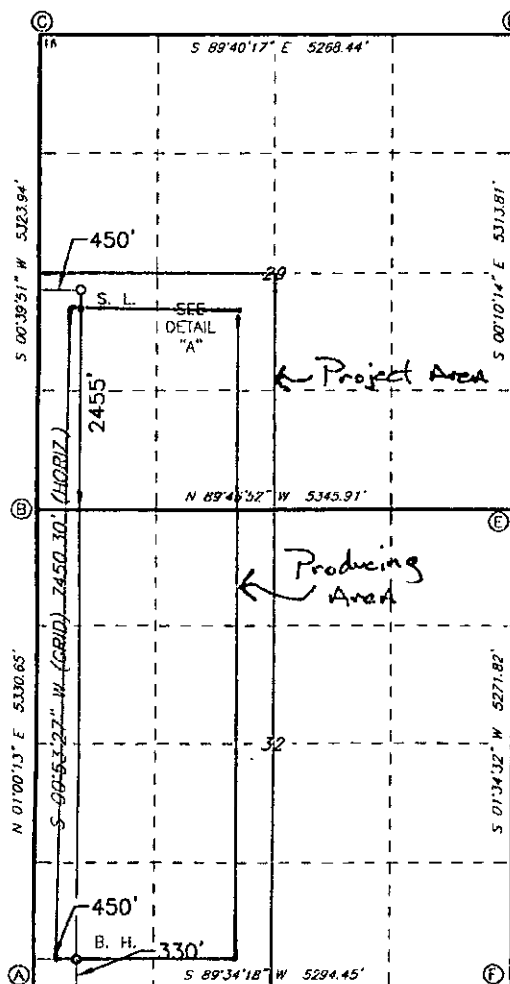
Form C-102  
Revised August 1, 2011  
Submit one copy to appropriate  
District Office

☐ AMENDED REPORT

WELL LOCATION AND ACREAGE DEDICATION PLAT

1 API Number		2 Pool Code 76780		3 Pool Name FOREHAND RANCH SOUTHWEST	
4 Property Code		5 Property Name VIPER 29/32 W2LM FED COM			
6 Well Number 1H		7 OGRID NO. 14744			
8 Operator Name MEWBOURNE OIL COMPANY		9 Elevation 3198'			
10 Surface Location					
UL or lot no. L	Section 29	Township 23S	Range 27E	Lot Idn	Feet from the 2455
North/South line SOUTH		Feet from the 450		East/West line WEST	
County EDDY					
11 Bottom Hole Location If Different From Surface					
UL or lot no. M	Section 32	Township 23S	Range 27E	Lot Idn	Feet from the 330
North/South line SOUTH		Feet from the 450		East/West line WEST	
County EDDY					
12 Dedicated Acres 480		13 Joint or Infill		14 Consolidation Code	
15 Order No.					

No allowable will be assigned to this completion until all interest have been consolidated or a non-standard unit has been approved by the division.



**GEODETC DATA**  
NAD 27 GRID - NM EAST  
**SURFACE LOCATION**  
N 463802.2 - E 535416.2  
LAT: 32.27505717° N  
LONG: 104.21874220° W  
**BOTTOM HOLE**  
N 456354.6 - E 535300.4  
**CORNER DATA**  
NAD 27 GRID - NM EAST  
A: CALCULATED CORNER  
N 456021.2 - E 534844.5  
B: CALCULATED CORNER  
N 461349.8 - E 534937.8  
C: CALCULATED CORNER  
N 466672.1 - E 534999.5  
D: FOUND 1-1/2" IRON PIPE  
N 466641.9 - E 540265.6  
E: FOUND 1/2" REBAR  
N 461329.4 - E 540282.4  
F: CALCULATED CORNER  
N 456060.8 - E 540137.5

**DETAIL "A"**  
3196.7' 600' 3195.8'  
600' 3200.3' 3200.3'

17 OPERATOR CERTIFICATION

I hereby certify that the information contained herein is true and complete to the best of my knowledge and belief, and that this organization either owns a working interest or unleased mineral interest in the land including the proposed bottom hole location or has a right to drill this well at this location pursuant to a contract with an owner of such a mineral or working interest, or to a voluntary pooling agreement or a compulsory pooling order heretofore entered by the division

Signature: B. P. B. 7-16-15  
Date: 7-16-15  
Printed Name: BRADLEY BISHOP  
E-mail Address: \_\_\_\_\_

18 SURVEYOR CERTIFICATION

I hereby certify that the well location shown on this plat was plotted from field notes of actual surveys made by me or under my supervision, and that the same is true and correct to the best of my belief.

6-22-2015

Date of Survey

Signature and Seal of Professional Surveyor

19680

Certificate Number

