

District I  
1625 N. French Dr., Hobbs, NM 88240  
District II  
1301 W. Grand Avenue, Artesia, NM 88210  
District III  
1000 Rio Brazos Rd., Aztec, NM 87410  
District IV  
1220 S. St. Francis Dr., Santa Fe, NM 87505

State of New Mexico  
Energy, Minerals & Natural Resources  
OIL CONSERVATION DIVISION  
1220 South St. Francis Dr.  
Santa Fe, NM 87505

**NEW OIL CONSERVATION**  
ARTESIA DISTRICT  
FEB 29 2016  
RECEIVED

Form C-102  
Revised October 12, 2005  
Submit to Appropriate District Office  
State Lease - 4 Copies  
Fee Lease - 3 Copies

AMENDED REPORT

WELL LOCATION AND ACREAGE DEDICATION PLAT

<sup>1</sup> API Number 30-015-43088	<sup>2</sup> Pool Code 96831	<sup>3</sup> Pool Name Cedar Lake; Glorieta - Yeso
<sup>4</sup> Property Code 315935	<sup>5</sup> Property Name Cedar Lake Federal C A	
<sup>7</sup> OGRID No. 873	<sup>6</sup> Operator Name Apache Corporation: 303 Veterans Airpark Lane, Suite 1000 Midland, TX 79705	<sup>8</sup> Well Number 858H
<sup>9</sup> Elevation		

<sup>10</sup> Surface Location

UL or lot no.	Section	Township	Range	Lot Idn	Feet from the	North/South line	Feet from the	East/West line	County
									Eddy Co, NM

<sup>11</sup> Bottom Hole Location If Different From Surface

UL or lot no.	Section	Township	Range	Lot Idn	Feet from the	North/South line	Feet from the	East/West line	County

<sup>12</sup> Dedicated Acres	<sup>13</sup> Joint or Infill	<sup>14</sup> Consolidation Code	<sup>15</sup> Order No. SEE ATTACHED - ORIGINAL C-102
-------------------------------	-------------------------------	----------------------------------	--

No allowable will be assigned to this completion until all interests have been consolidated or a non-standard unit has been approved by the division.

16				<p><b>17 OPERATOR CERTIFICATION</b> I hereby certify that the information contained herein is true and complete to the best of my knowledge and belief, and that this organization either owns a working interest or unleased mineral interest in the land including the proposed bottom hole location or has a right to drill this well at this location pursuant to a contract with an owner of such a mineral or working interest, or to a voluntary pooling agreement or a compulsory pooling order heretofore entered by the division.</p> <p><i>Emily Follis</i> 02/16/2016 Signature Date</p> <p>Emily Follis Printed Name</p>	
				<p><b>18 SURVEYOR CERTIFICATION</b> I hereby certify that the well location shown on this plat was plotted from field notes of actual surveys made by me or under my supervision, and that the same is true and correct to the best of my belief.</p> <p>Date of Survey Signature and Seal of Professional Surveyor:</p>	
				<p>Certificate Number</p>	

DISTRICT I  
1625 N. French Dr., Hobbs, NM 88240  
Phone: (575) 393-6161 Fax: (575) 393-0720

DISTRICT II  
811 S. First St. Artesia, NM 88210  
Phone: (575) 748-1283 Fax: (575) 748-9720

DISTRICT III  
1000 Rio Brazos Road, Aztec, NM 87410  
Phone: (505) 334-6178 Fax: (505) 334-6170

DISTRICT IV  
1220 S. St. Francis Dr., Santa Fe, NM 87505  
Phone: (505) 476-3460 Fax: (505) 476-3462

State of New Mexico  
Energy, Minerals & Natural Resources Department  
OIL CONSERVATION DIVISION  
1220 South St. Francis Dr.  
Santa Fe, New Mexico 87505

NM OIL CONSERVATION  
ARTESIA DISTRICT  
FEB 29 2016

Form C-102  
Revised August 1, 2011  
Submit one copy to appropriate  
District Office

RECEIVED DAMENDED REPORT

WELL LOCATION AND ACREAGE DEDICATION PLAT

API Number <b>30-015-43088</b>	Pool Code <b>96831</b>	Pool Name <b>Cedarlake; Glorieta Yeso</b>
Property Code <b>314794</b>	Property Name <b>NFE FEDERAL COM</b>	Well Number <b>58H</b>
OGRID No. <b>873</b>	Operator Name <b>APACHE CORPORATION</b>	Elevation <b>3868'</b>

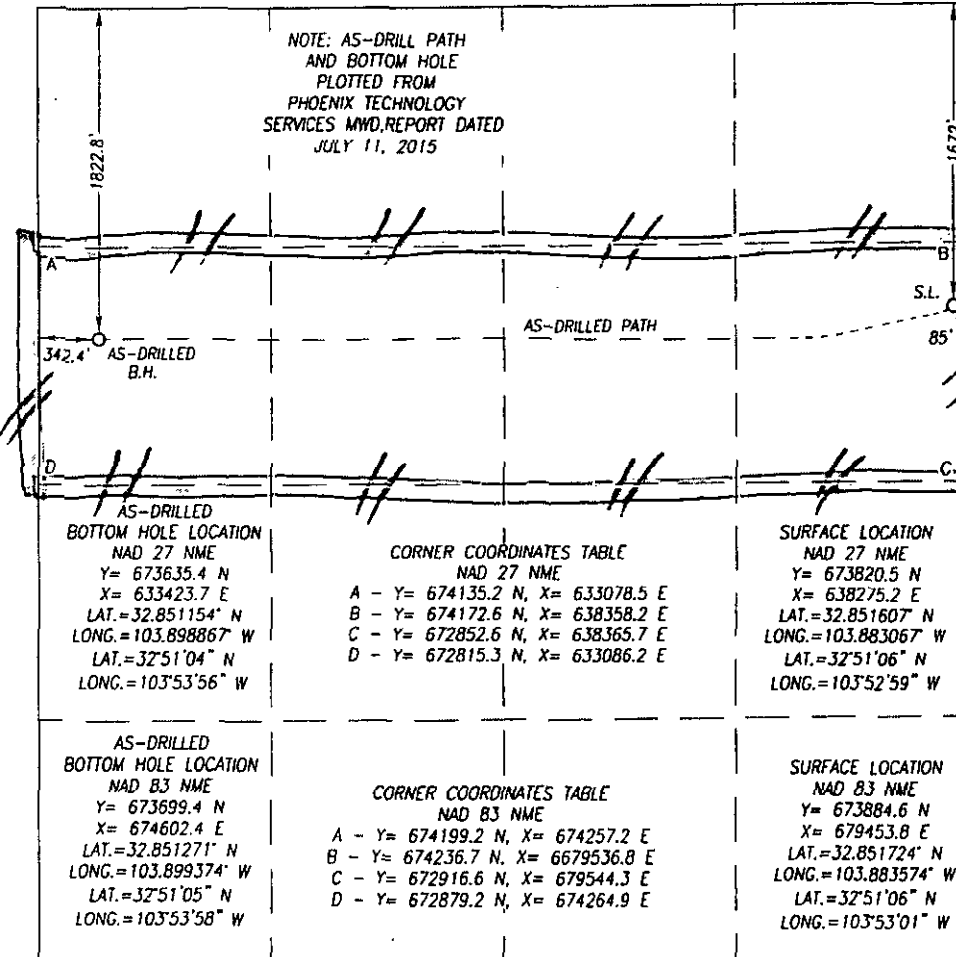
Surface Location

UL or lot No.	Section	Township	Range	Lot Idn	Feet from the	North/South line	Feet from the	East/West line	County
H	8	17-S	31-E		1672	NORTH	85	EAST	EDDY

AS-Drilled Bottom Hole Location If Different From Surface

UL or lot No.	Section	Township	Range	Lot Idn	Feet from the	North/South line	Feet from the	East/West line	County
E	8	17-S	31-E		1822.8	NORTH	342.4	WEST	EDDY
Dedicated Acres <b>160</b>	Joint or Infill	Consolidation Code	Order No.						

NO ALLOWABLE WILL BE ASSIGNED TO THIS COMPLETION UNTIL ALL INTERESTS HAVE BEEN CONSOLIDATED OR A NON-STANDARD UNIT HAS BEEN APPROVED BY THE DIVISION



**OPERATOR CERTIFICATION**  
I hereby certify that the information herein is true and complete to the best of my knowledge and belief, and that this organization either owns a working interest or unleased mineral interest in the land including the proposed bottom hole location or has a right to drill this well at this location pursuant to a contract with an owner of such mineral or working interest, or to a voluntary pooling agreement or a compulsory pooling order heretofore entered by the division.

*Emily Follis*  
Signature Date  
Emily Follis  
Printed Name  
emily.follis@apachecorp.com  
E-mail Address

**SURVEYOR CERTIFICATION**  
I hereby certify that the well location shown on this plat was plotted from field notes of actual surveys made by me or under my supervision, and that the same is true and correct to the best of my belief.

MAY 15, 2015  
Date of Survey  
Signature & Seal of Professional Surveyor:  
*Ronald J. Eidson*  
Certificate Number Gary G. Eidson 12641  
Ronald J. Eidson 3239

LSL Rel. W.D.: 15.11 0572 JWSC W.O.: 15.13 0725