

UNITED STATES **Carlsbad Field Office**  
DEPARTMENT OF THE INTERIOR  
BUREAU OF LAND MANAGEMENT **NMOC Artesia**FORM APPROVED  
OMB NO. 1004-0135  
Expires: July 31, 2010**SUNDRY NOTICES AND REPORTS ON WELLS**  
*Do not use this form for proposals to drill or to re-enter an abandoned well. Use form 3160-3 (APD) for such proposals.*5. Lease Serial No.  
NMNM118109

6. If Indian, Allottee or Tribe Name

7. If Unit or CA/Agreement, Name and/or No.

8. Well Name and No.  
Multiple--See Attached9. API Well No.  
Multiple--See Attached10. Field and Pool, or Exploratory  
EMPIRE  
EMPIRE GLORIETA-YESO11. County or Parish, and State  
EDDY COUNTY, NM**SUBMIT IN TRIPLICATE - Other instructions on reverse side.**

1. Type of Well

☒ Oil Well ☐ Gas Well ☐ Other2. Name of Operator  
COG OPERATING LLCContact: KANICIA CASTILLO  
E-Mail: kcastillo@concho.com3a. Address  
600 W ILLINOIS AVENUE  
MIDLAND, TX 797013b. Phone No. (include area code)  
Ph: 432-685-43324. Location of Well (Footage, Sec., T., R., M., or Survey Description)  
Multiple--See Attached**12. CHECK APPROPRIATE BOX(ES) TO INDICATE NATURE OF NOTICE, REPORT, OR OTHER DATA**

TYPE OF SUBMISSION	TYPE OF ACTION			
<input checked="" type="checkbox"/> Notice of Intent	<input type="checkbox"/> Acidize	<input type="checkbox"/> Deepen	<input type="checkbox"/> Production (Start/Resume)	<input type="checkbox"/> Water Shut-Off
<input type="checkbox"/> Subsequent Report	<input type="checkbox"/> Alter Casing	<input type="checkbox"/> Fracture Treat	<input type="checkbox"/> Reclamation	<input type="checkbox"/> Well Integrity
<input type="checkbox"/> Final Abandonment Notice	<input type="checkbox"/> Casing Repair	<input type="checkbox"/> New Construction	<input type="checkbox"/> Recomplete	<input checked="" type="checkbox"/> Other
	<input type="checkbox"/> Change Plans	<input type="checkbox"/> Plug and Abandon	<input type="checkbox"/> Temporarily Abandon	Off-Lease Measuremen t
	<input type="checkbox"/> Convert to Injection	<input type="checkbox"/> Plug Back	<input type="checkbox"/> Water Disposal	

13. Describe Proposed or Completed Operation (clearly state all pertinent details, including estimated starting date of any proposed work and approximate duration thereof. If the proposal is to deepen directionally or recomple horizontally, give subsurface locations and measured and true vertical depths of all pertinent markers and zones. Attach the Bond under which the work will be performed or provide the Bond No. on file with BLM/BIA. Required subsequent reports shall be filed within 30 days following completion of the involved operations. If the operation results in a multiple completion or recompletion in a new interval, a Form 3160-4 shall be filed once testing has been completed. Final Abandonment Notices shall be filed only after all requirements, including reclamation, have been completed, and the operator has determined that the site is ready for final inspection.)

COG Operating LLC respectfully request off lease measurement of gas production for the following wells:

Tumak Federal #1 API# 30-015-40463  
Tumak Federal #2 API# 30-015-40464  
Tumak Federal #3 API# 30-015-40459  
Tumak Federal #4 API# 30-015-40460

PD 11/20/15  
Accepted for record  
NMOC

NM OIL CONSERVATION  
ARTESIA DISTRICT

NOV 09 2015

RECEIVED

Production from these wells will be routed and measured at the CTB located at Tumak Federal #3 CTB. A test separator will be used to determine allocation using the well test method. Test Vessel S/N# 7637-J containing meters: (O) 394136, (G) D-390123. Lease# NMNM-118109, Eddy County, NM, SWSW, Sec 14, T1S, R28E.

14. I hereby certify that the foregoing is true and correct.

Electronic Submission #291518 verified by the BLM Well Information System  
For COG OPERATING LLC, sent to the Carlsbad  
Committed to AFMSS for processing by CATHY QUEEN on 06/10/2015 (15CQ0231SE)

Name (Printed/Typed) KANICIA CASTILLO

Title PREPARER

Signature (Electronic Submission)

Date 02/12/2015

**THIS SPACE FOR FEDERAL OR STATE OFFICE USE**

Approved By

Title LPET

Date 10/28/15

Conditions of approval, if any, are attached. Approval of this notice does not warrant or certify that the applicant holds legal or equitable title to those rights in the subject lease which would entitle the applicant to conduct operations thereon.

Office CFO

Title 18 U.S.C. Section 1001 and Title 43 U.S.C. Section 1212, make it a crime for any person knowingly and willfully to make to any department or agency of the United States any false, fictitious or fraudulent statements or representations as to any matter within its jurisdiction.

**\*\* BLM REVISED \*\* BLM REVISED \*\* BLM REVISED \*\* BLM REVISED \*\* BLM REVISED \*\***

## Additional data for EC transaction #291518 that would not fit on the form

### Wells/Facilities, continued

Agreement	Lease	Well/Fac Name, Number	API Number	Location
NMNM118109	NMNM118109	TUMAK FEDERAL 3	30-015-40459-00-S1	Sec 14 T17S R28E SWSW 245FSL 230FWL
NMNM118109	NMNM118109	TUMAK FEDERAL 1	30-015-40463-00-X1	Sec 14 T17S R28E SWSW 1024FSL 305FWL
NMNM118109	NMNM118109	TUMAK FEDERAL 2	30-015-40464-00-S1	Sec 14 T17S R28E SWSW 984FSL 474FWL
NMNM118109	NMNM118109	TUMAK FEDERAL 4	30-015-40460-00-X1	Sec 14 T17S R28E SWSW 455FSL 1275FWL

### 32. Additional remarks, continued

Gas measurement will take place off lease at our White Oak State #19 CTB. Lease# VB-492, Eddy County, NM, NWNE, Sec 23, T17S, R28E. Tumak will have it's own DCP sales meter at this location, DCP meter# 727044-00.

COG Operating LLC has 100% ownership in these wells.

DCP Midstream has found it uneconomical to build a gas line to the Tumak wells, therefore COG Operating LLC will run its gas lines following pre-existing lease roads to the DCP sales line. COG Operating LLC will be responsible for pipeline leaks and loss of production between facility and sales meter off lease.

Row #3: NMSLU RW# 33175

Please see attachments.

BLM NM-129229

**TUMAK FEDERAL 3 BATTERY**  
SWSW SECTION 14, T17S, R28E, UNIT M  
EDDY COUNTY, NM

WELLS:  
TUMAK FEDERAL #002: 30-015-40464  
TUMAK FEDERAL #003: 30-015-40459

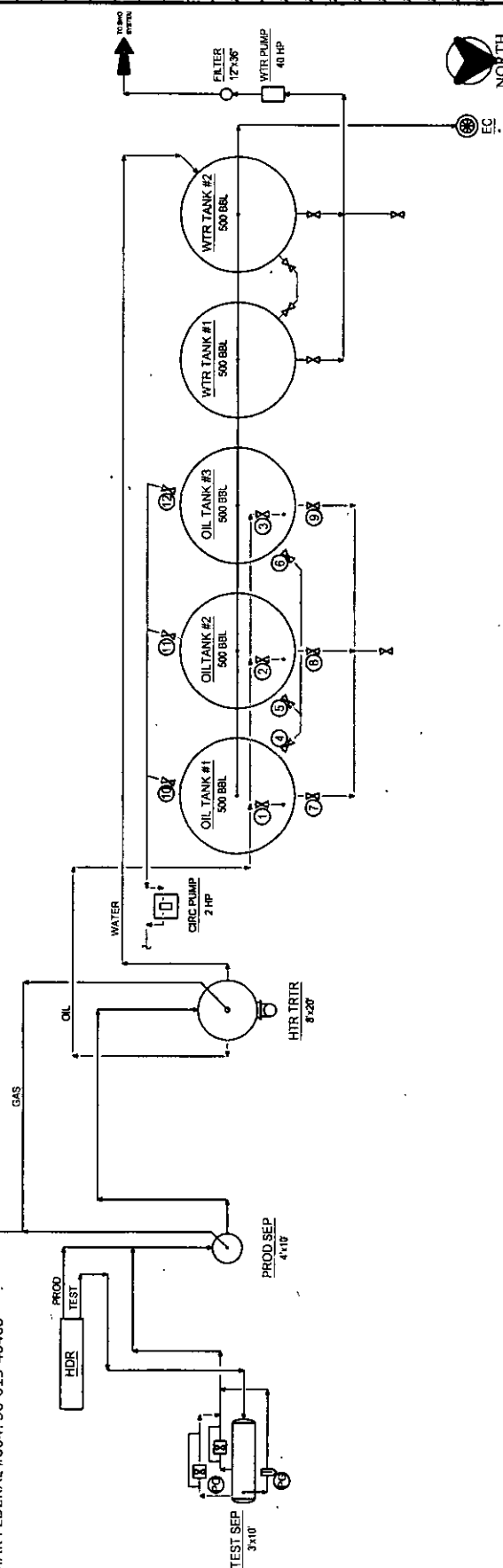
**FUTURE WELLS:**  
TUMAK FEDERAL #001: 30-015-40463  
TUMAK FEDERAL #004: 30-015-40460

**Production Phase - Oil Tank #1**

- Valve 1 open
- Valves 2 and 3 closed
- Valves 4, 5, and 6 open
- Valves 7, 8, and 9 closed
- Valves 10, 11, and 12 closed

Sales Phase - Oil Tank #1

- Valve 1 closed
- Valves 2 or 3 open
- Valve 4 closed
- Valves 5 and 6 open
- Valve 7 open
- Valves 8 and 9 closed
- Valves 10, 11, and 12 closed



**COG Operating LLC**  
**Site Security Plans Located At:**  
**One Concho Center**  
**600 W. Illinois Ave.**  
**Midland, TX 79701**

**Ledger for Site Diagram**

Produced Fluid:	_____
Produced Oil:	_____
Produced Gas:	_____
Produced Water:	_____

[illegible]

An aerial photograph of a rural landscape, likely in a desert region, showing a network of roads, fields, and some structures. The map is overlaid with several labels and a legend. The labels include: 'NMNM 0012896' in the top left; 'NMIC 0068742' in the top center; 'NMNM 0080268' in the bottom left; 'NMNM 118109' in the center; 'NMNM 118706' in the center-right; 'NMNM 0001510' in the bottom right; 'Tumak CTB' in the center, pointing to a small structure; 'Gas flow line' in the center, pointing to a line; and 'DCP Twin Meter White Oak State Battery' in the bottom right, pointing to a large structure. The map is oriented with North at the top.

NMNM 0042896

NMIC 0068742

NMNM 0080268

NMIC 0068742A

NMNM 118109

Tumak CTB

Gas flow line

NMNM 0001510

DCP Twin Meter  
White Oak State Battery

This is a high-contrast, black and white aerial photograph of a rural landscape. The image shows a network of roads, fields, and some buildings. Several labels are overlaid on the image, identifying specific locations and features:

- NMNM 0042896**: Located in the upper left quadrant.
- NMIC 0068742**: Located in the upper center.
- NMNM 0080268**: Located in the lower left quadrant.
- NMIC 0068742A**: Located in the lower center.
- NMNM 118109**: Located in the lower right quadrant.
- Tumak CTB**: Located in the lower right quadrant, near the center.
- Gas flow line**: Located in the lower right quadrant, near the center.
- NMNM 0001510**: Located in the lower right quadrant, near the center.
- DCP Twin Meter**: Located in the lower right quadrant, near the center.
- White Oak State Battery**: Located in the lower right quadrant, near the center.
- NMNM 118706**: Located in the lower right quadrant, near the center.

An aerial photograph of a rural landscape, likely in a desert region, showing a network of roads, fields, and some structures. Several labels are overlaid on the map, pointing to specific locations or features. The labels include: 'NMNM 0012896' in the top left; 'NMIC 0068742' in the top center; 'NMNM 0080268' in the top right; 'NMNM 0068742A' in the middle left; 'NMNM 118706' in the middle center; 'NMNM 118109' in the middle right; 'Tumak CTB' in the bottom left; 'Gas flow line' in the bottom center; 'DCP Twin Meter White Oak State Battery' in the bottom right; and 'NMNM 0001510' in the far right. The map shows a mix of open land, some buildings, and what appears to be a power or gas line running through the area.

NMNM 0042896

NMIC 0068742

NMNM 0080268

NMIC 0068742A

NMNM 118109

Tumak CTB

Gas flow line

NMNM 0001510

DCP Twin Meter  
White Oak State Battery

NMNM 118706

An aerial photograph of a rural landscape, likely in a desert region, showing a network of roads, fields, and some structures. Several labels are overlaid on the map, pointing to specific locations or features. The labels include: 'NMNM 0012896' in the top left; 'NMIC 0068742' in the top center; 'NMNM 0080268' in the top right; 'NMNM 0068742A' in the middle left; 'NMNM 118706' in the middle center; 'NMNM 118109' in the middle right; 'Tumak CTB' in the bottom left; 'Gas flow line' in the bottom center; 'DCP Twin Meter White Oak State Battery' in the bottom right; and 'NMNM 0001510' in the far right. The map shows a mix of open land, some buildings, and what appears to be a power or gas line running through the area.

An aerial photograph of a rural landscape, likely in a desert region, showing a network of roads, fields, and some buildings. The map is overlaid with several labels and a legend. The labels include: 'NMNM 0042896' in the top left; 'NMIC 0068742' in the top center; 'NMNM 0080268' in the bottom left; 'NMNM 118109' in the center; 'NMNM 118706' in the center-right; 'NMNM 0001510' in the bottom right; 'Tumak CTB' with a line pointing to a small structure; and 'Gas flow line' with a line pointing to a road. A legend in the bottom right corner identifies 'DCP Twin Meter' and 'White Oak State Battery' with corresponding symbols. The map is oriented with North at the top.

An aerial photograph of a rural landscape, likely in a desert region, showing a network of roads, fields, and some buildings. The map is overlaid with several labels and a legend. The labels include: 'NMNM 0042896' in the top left; 'NMIC 0068742' in the top center; 'NMNM 0080268' in the bottom left; 'NMNM 118109' in the center; 'NMNM 118706' in the center-right; 'NMNM 0001510' in the bottom right; 'Tumak CTB' with a line pointing to a small structure; and 'Gas flow line' with a line pointing to a road. A legend in the bottom right corner identifies 'DCP Twin Meter' and 'White Oak State Battery' with corresponding symbols. The map is oriented with North at the top.

An aerial photograph of a rural landscape, likely in a desert region, showing a network of roads, fields, and some buildings. The map is overlaid with several labels and a legend. The labels include: 'NMNM 0042896' in the top left; 'NMIC 0068742' in the top center; 'NMNM 0080268' in the bottom left; 'NMNM 118109' in the center; 'NMNM 118706' in the center-right; 'NMNM 0001510' in the bottom right; 'Tumak CTB' with a line pointing to a small structure; and 'Gas flow line' with a line pointing to a road. A legend in the bottom right corner identifies 'DCP Twin Meter' and 'White Oak State Battery' with corresponding symbols. The map is oriented with North at the top.

An aerial photograph of a rural landscape, likely in a desert region, showing a network of roads, fields, and some buildings. The map is overlaid with several labels and property boundaries. The labels include: 'NMNM 0012896' in the top left; 'NMIC 0068742' in the top center; 'NMNM 0080268' in the top right; 'NMNM 118706' in the middle left; 'NMNM 118109' in the middle center; 'Tumak CTB' in the middle right; 'Gas flow line' in the bottom center; 'DCP Twin Meter White Oak State Battery' in the bottom right; and 'NMNM 0001510' in the bottom right corner. The map shows a grid-like pattern of roads and fields, with some areas appearing more developed than others. The overall tone is grainy and high-contrast, typical of an aerial photograph.



**Bureau of Land Management  
Carlsbad Field Office  
620 East Greene Street  
Carlsbad, New Mexico 88220  
575-234-5972**

**Off-Lease Sales of gas production  
Conditions of Approval**

**COG Operating LLC  
Tumak Federal #1,#2,#3 and #4  
NM118109**

Approval of off-lease measurement is subject to the following conditions of approval:

1. This agency shall be notified of any change in sales method or location of the Sales point.
2. This agency shall be notified of any spill or discharge as required by NTL-3A. No gas may be vented/flared without proper measurement and prior approval. Any gas vented must be flared.
3. This agency reserves the right to modify or rescind approval whenever it determines continued use of the approved method may adversely affect the surface or subsurface environments and/or product accountability.
4. This approval is subject to like approval by the New Mexico Oil Conservation Division.
5. Additional wells and/or leases require additional approvals.
6. This approval does not constitute right-of-way approval for any off-lease activities. Within 30 days, an application for right-of-way approval must be submitted to the Realty Section if not already done.
7. Approval for off-lease from various sources is a privilege which is granted to lessees/operators for the purpose of aiding conservation and extending the economic life of leases. Applicants should be cognizant that failure to operate in accordance with the provisions outlined in the Authorized Officer's conditions of approval and/or subsequent stipulations or modifications will subject such approval to revocation.

7

SWSW SECTION 14, T17S, R28E, UNIT M  
EDDY COUNTY, NM

TUMAK FEDERAL #002: 30-015-40464  
TUMAK FEDERAL #003: 30-015-40459

TUMAK FEDERAL #001: 30-015-40463  
TUMAK FEDERAL #004: 30-015-40460



### Ledger for Site Diagram

COG Operating LLC  
Site Security Plans Located At:  
One Concho Center  
600 W. Illinois Ave.  
Midland, TX 79701

- Valve 1 open
- Valves 2 and 3 closed
- Valves 4, 5, and 6 open
- Valves 7, 8, and 9 closed
- Valves 10, 11, and 12 closed

- Sales Phase - Oil Tank #1
- Valve 1 closed
- Valves 2 or 3 open
- Valve 4 closed
- Valves 5 and 6 open
- Valve 7 open
- Valves 8 and 9 closed
- Valves 10, 11, and 12 closed

NOTES:									
Type of Lease: Federal									
Federal Lease #: NMMNM - 118109									
Property Code: 39326									
OGRID #: 229137									
CONFIDENTIALITY NOTICE									
THIS DRAWING IS PROPERTY OF COG OPERATING LLC AND IS LOANED TO THE BORROWER FOR CONFIDENTIAL USE ONLY. IT IS NOT TO BE REPRODUCED, COPIED, LENT OR OTHERWISE DISPOSED OF ORIGINALLY OR INDIRECTLY, NOR USED FOR ANY PURPOSE OTHER THAN THAT WHICH IT IS SPECIFICALLY FURNISHED.									
REFERENCE DRAWINGS			REVISIONS			ENGINEERING RECORD			
NO.	TITLE	NO.	DATE	DESCRIPTION	BY	CHK.	APP.	BY	DATE
A		1	08/01/12	ISSUE FOR SITE PERMITTING	CMB				08/01/12
B		2	08/30/13	UPDATED FOR TUMAK FED 3 BTRY	CMS				08/01/12
COG OPERATING LLC									
600 WEST ILLINOIS AVENUE									
MIDLAND, TEXAS 79701									
FACIL NAME C. BLEDGEE									
FACIL NAME WABERS									
SCALE: NONE									
EDDY COUNTY									
TUMAK FEDERAL 3 BATTERY									
NEW MEXICO									
NEW MEXICO SHELF ASSET									
PRODUCTION FACILITIES									
SITE FACILITY DIAGRAM									
TUMAK FEDERAL 3 BATTERY									
D-1700-81-005									
REV B									