

DISTRICT I
1625 N. French Dr., Hobbs, NM 88240
Phone: (575) 393-6161 Fax: (575) 393-6162

DISTRICT II
811 S. First St., Artesia, NM 88210
Phone: (575) 748-1283 Fax: (575) 748-9720

DISTRICT III
1000 Rio Brazos Rd., Aztec, NM 87410
Phone: (505) 334-6178 Fax: (505) 334-6170

DISTRICT IV
1220 S. St. Francis Dr., Santa Fe, NM 87505
Phone: (505) 476-3460 Fax: (505) 476-3462

NM OIL CONSERVATION **ARTESIA DISTRICT**

OCT 31 2016

RECEIVED

State of New Mexico
Energy, Minerals & Natural Resources Department
OIL CONSERVATION DIVISION
1220 South St. Francis Dr.
Santa Fe, New Mexico 87505

Form C-102
Revised August 1, 2011
Submit one copy to appropriate
District Office
☐ AMENDED REPORT

WELL LOCATION AND ACREAGE DEDICATION PLAT AS DRILLED PLAT

API Number 30-015-43634	Pool Code 97136	Pool Name BRUSHY DRAW; WOLFCAMP
Property Code 313813	Property Name RDX FEDERAL COM 17	Well Number 40H
OGRID No. 246289	Operator Name RKI EXPLORATION & PRODUCTION	Elevation 3086'

Surface Location

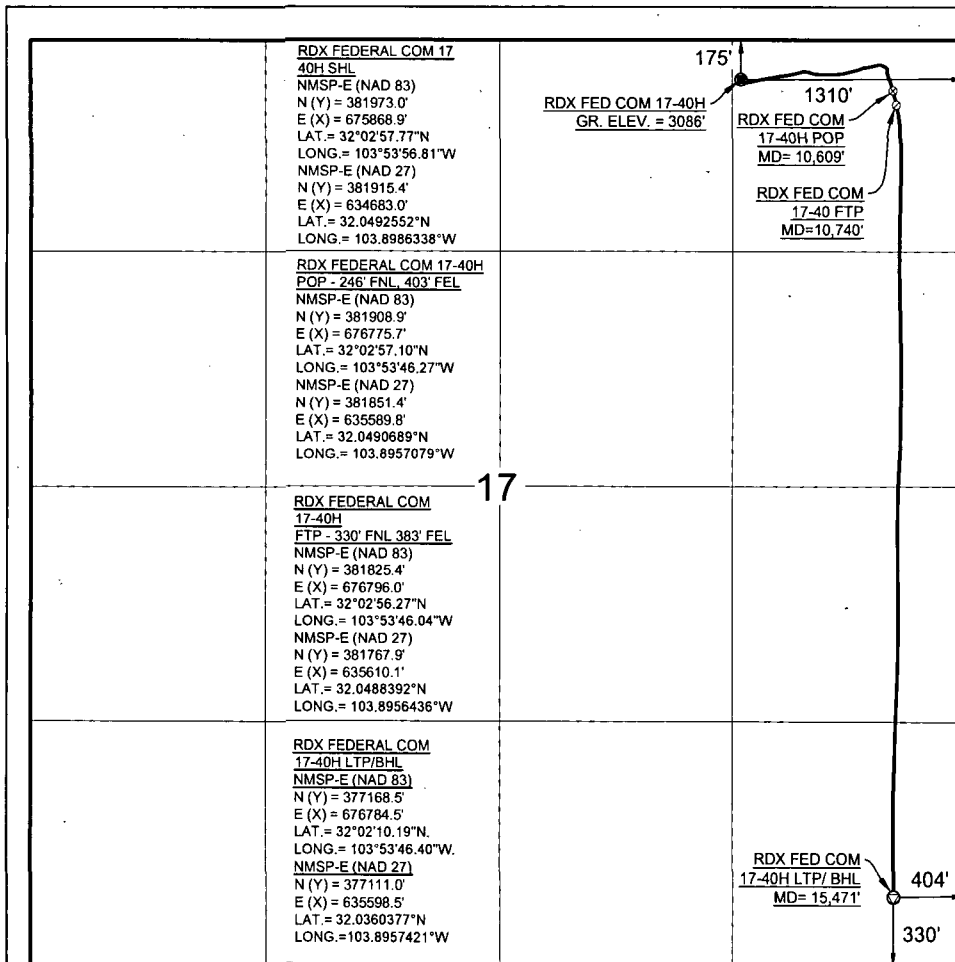
UL or lot no.	Section	Township	Range	Lot Idn	Feet from the	North/South line	Feet from the	East/West line	County
A	17	26S	30E		175	N	1310	E	EDDY

Bottom Hole Location If Different From Surface

UL or lot no.	Section	Township	Range	Lot Idn	Feet from the	North/South line	Feet from the	East/West line	County
P	17	26S	30E		330	S	404	E	EDDY

Dedicated Acres 160.00	Joint or Infill	Consolidated Code	Order No.
----------------------------------	-----------------	-------------------	-----------

No allowable will be assigned to this completion until all interests have been consolidated or a non-standard unit has been approved by the division.



OPERATOR CERTIFICATION

I hereby certify that the information contained herein is true and complete to the best of my knowledge and belief, and that this organization either owns a working interest or unleased mineral interest in the land including the proposed bottom hole location or has a right to drill this well at this location pursuant to a contract with an owner of such a mineral or working interest, or to voluntary pooling agreement or a compulsory pooling order heretofore entered by the division.

Signature _____ Date **9/15/2016**
Ashlee Fechino
Print Name
ashlee.fechino@wpenergy.com
E-mail Address

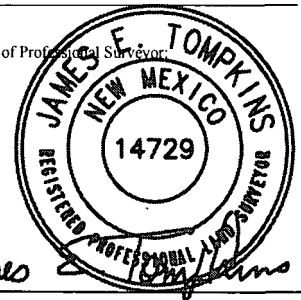
SURVEYORS CERTIFICATION

I hereby certify that the well location shown on this plat was plotted from field notes of actual surveys made by me or under my supervision, and that the same is true and correct to the best of my belief.

AUGUST 22, 2016

Date of Survey

Signature and Seal of Professional Surveyor



Job No.: **WTC51325**

JAMES E. TOMPKINS 14729

Certificate Number

Company Name: WPX
RDX Fed Com 17-40H
Eddy County, NM (Nad83NME)
Rig: Orion - Phoenix
Created By: Keith Noack
Date: 08/12/2016

RDX Fed Com 17-40H
Eddy County, NM (Nad83NME)
Q160264 & WT-160156
Design #1

WPXENERGY



Azimuths to Grid North
Magnetic North: 6.98°
Magnetic Field
Strength: 47912.3nT
Dip Angle: 59.86°
Date: 5/18/2016
Model: IGRF2015

PROJECT DETAILS: Eddy County, NM (Nad83NME)

Geodetic System: US State Plane 1983
Datum: North American Datum 1983
Ellipsoid: GRS 1980
Zone: New Mexico Eastern Zone
System Datum: Mean Sea Level

WELL DETAILS: RDX Fed Com 17-40H

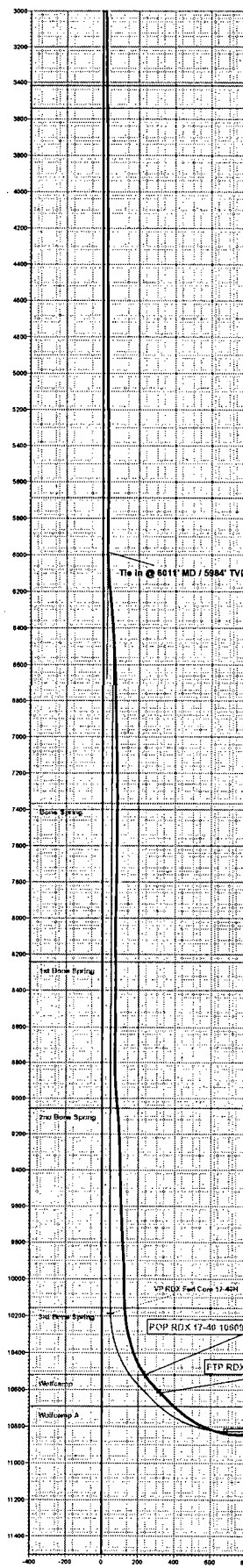
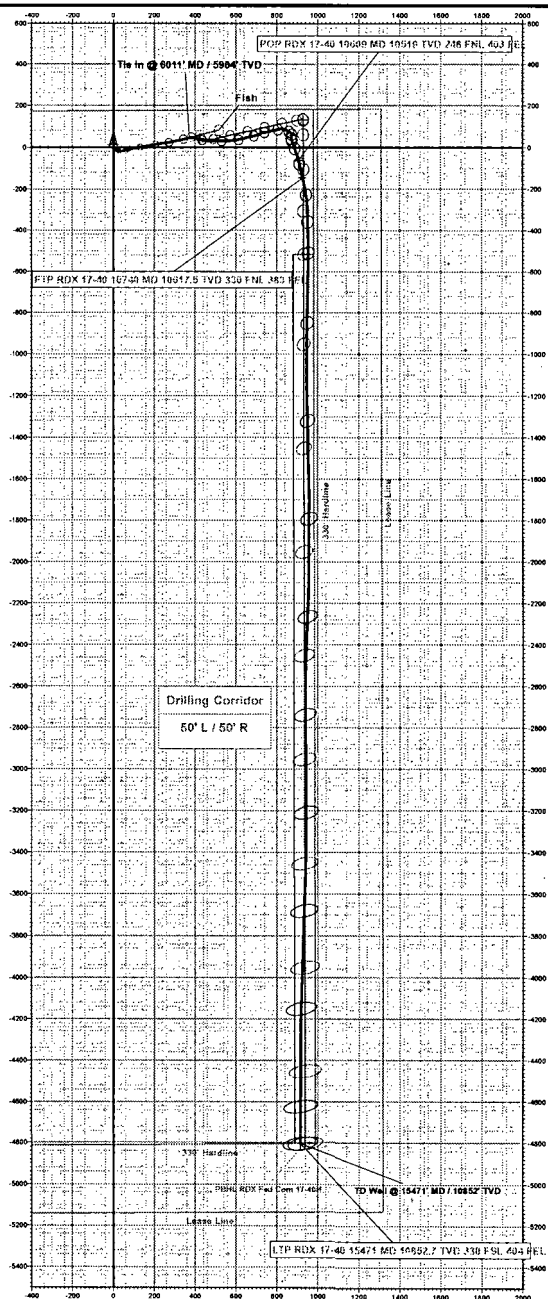
Ground Level: 3086.0		Northing		Easting		Latitude		Longitude	
+N/-S	0.0	+E/-W	0.0	381873.00	675868.90	32° 2' 57.708 N	103° 53' 56.808 W		

DESIGN TARGET DETAILS

Name	TVD	+N/-S	+E/-W	Northing	Easting	Latitude	Longitude
VP RDX Fed Com 17-40H	10188.7	122.3	929.8	382105.25	676788.70	32° 2' 59.040 N	103° 53' 45.988 W
POP RDX 17-40	10519.9	-64.0	906.9	381900.02	676775.75	32° 2' 57.099 N	103° 53' 46.274 W
FTP RDX 17-40	10817.5	-147.8	827.1	381825.38	676795.97	32° 2' 56.270 N	103° 53' 46.043 W
PBHL RDX Fed Com 17-40H	10783.9	-8804.7	238.2	377168.25	676808.10	32° 2' 10.183 N	103° 53' 46.121 W
LTP RDX 17-40	10852.7	-8804.5	815.8	377168.53	676784.53	32° 2' 10.186 N	103° 53' 46.395 W

ANNOTATIONS

MD	Ino	Azi	TVD	+N/-S	+E/-W	V-Set Departure	Annotation
8011.0	8.80	75.00	5984.5	45.0	372.7	28.3	Tie in @ 8011' MD / 5984' TVD
15471.0	88.70	179.00	10852.7	-8804.5	915.6	4890.9	TD Well @ 15471' MD / 10852' TVD



Vertical Section at 168.94° (200 usf/in)