

UNITED STATES
DEPARTMENT OF THE INTERIOR
BUREAU OF LAND MANAGEMENT**Carlsbad Field Office**
OCD Artesia
FORM APPROVED
B NO. 1004-0135
Expires: July 31, 2010
Case Serial No.
NMNM0557370**SUNDRY NOTICES AND REPORTS ON WELLS**
*Do not use this form for proposals to drill or to re-enter an abandoned well. Use form 3160-3 (APD) for such proposals.***SUBMIT IN TRIPLICATE - Other instructions on reverse side.**

1. Type of Well <input checked="" type="checkbox"/> Oil Well <input type="checkbox"/> Gas Well <input type="checkbox"/> Other		8. Well Name and No. EAGLE 34 J FEDERAL 81
2. Name of Operator LIME ROCK RESOURCES II A LP Contact: MIKE PIPPIN E-Mail: MIKE@PIPPINLLC.COM		9. API Well No.
3a. Address 1111 BAGBY STREET SUITE 4600 HOUSTON, TX 77002	3b. Phone No. (include area code) Ph: 505-327-4573	10. Field and Pool, or Exploratory RED LAKE
4. Location of Well (Footage, Sec., T., R., M., or Survey Description) Sec 34 T17S R27E NWSE 1790FSL 1650FEL		11. County or Parish, and State EDDY COUNTY, NM

12. CHECK APPROPRIATE BOX(ES) TO INDICATE NATURE OF NOTICE, REPORT, OR OTHER DATA

TYPE OF SUBMISSION	TYPE OF ACTION			
<input checked="" type="checkbox"/> Notice of Intent	<input type="checkbox"/> Acidize	<input type="checkbox"/> Deepen	<input type="checkbox"/> Production (Start/Resume)	<input type="checkbox"/> Water Shut-Off
<input type="checkbox"/> Subsequent Report	<input type="checkbox"/> Alter Casing	<input type="checkbox"/> Fracture Treat	<input type="checkbox"/> Reclamation	<input type="checkbox"/> Well Integrity
<input type="checkbox"/> Final Abandonment Notice	<input type="checkbox"/> Casing Repair	<input type="checkbox"/> New Construction	<input type="checkbox"/> Recomplete	<input checked="" type="checkbox"/> Other
	<input type="checkbox"/> Change Plans	<input type="checkbox"/> Plug and Abandon	<input type="checkbox"/> Temporarily Abandon	Change to Original APD
	<input type="checkbox"/> Convert to Injection	<input type="checkbox"/> Plug Back	<input type="checkbox"/> Water Disposal	

13. Describe Proposed or Completed Operation (clearly state all pertinent details, including estimated starting date of any proposed work and approximate duration thereof. If the proposal is to deepen directionally or recompleat horizontally, give subsurface locations and measured and true vertical depths of all pertinent markers and zones. Attach the Bond under which the work will be performed or provide the Bond No. on file with BLM/BIA. Required subsequent reports shall be filed within 30 days following completion of the involved operations. If the operation results in a multiple completion or recompleat in a new interval, a Form 3160-4 shall be filed once testing has been completed. Final Abandonment Notices shall be filed only after all requirements, including reclamation, have been completed, and the operator has determined that the site is ready for final inspection.)

LIME ROCK WOULD LIKE TO CHANGE THE ORIGINAL APD FROM A DIRECTIONAL WELL TO A VERTICAL WELL:

For economic reasons, Lime Rock would like to change this well to a vertical well. The well will have the same surface location but be drilled vertical. See the attached new C-102 and drilling program. The only other change to the original drilling program will be the surface bit, which will be changed from 12-1/4" to 11".

Lime Rock would like to spud this well on about October 17, 2016.

All Previous COAs
still Apply

NM OIL CONSERVATION
ARTESIA DISTRICT

NOV 09 2016

RECEIVED

14. I hereby certify that the foregoing is true and correct. Electronic Submission #353000 verified by the BLM Well Information System For LIME ROCK RESOURCES II A LP, sent to the Carlsbad Committed to AFMSS for processing by DEBORAH MCKINNEY on 10/04/2016 (17DLM0010SE)	
Name (Printed/Typed) MIKE PIPPIN	Title PETROLEUM ENGINEER
Signature (Electronic Submission)	Date 09/29/2016

THIS SPACE FOR FEDERAL OR STATE OFFICE USE

Approved By CHARLES NIMMER	Title PETROLEUM ENGINEER	Date 10/28/2016
Conditions of approval, if any, are attached. Approval of this notice does not warrant or certify that the applicant holds legal or equitable title to those rights in the subject lease which would entitle the applicant to conduct operations thereon.		
Office Carlsbad		

Title 18 U.S.C. Section 1001 and Title 43 U.S.C. Section 1212, make it a crime for any person knowingly and willfully to make to any department or agency of the United States any false, fictitious or fraudulent statements or representations as to any matter within its jurisdiction.

** BLM REVISED ** BLM REVISED ** BLM REVISED ** BLM REVISED ** BLM REVISED **

District I
1625 N. French Dr., Hobbs, NM 88240
Phone: (575) 393-6161 Fax: (575) 393-0720
District II
811 S. First St., Artesia, NM 88210
Phone: (575) 748-1283 Fax: (575) 748-9720
District III
1000 Rio Brazos Road, Aztec, NM 87410
Phone: (505) 334-6178 Fax: (505) 334-6170
District IV
1220 S. St. Francis Dr., Santa Fe, NM 87505
Phone: (505) 476-3460 Fax: (505) 476-3462

State of New Mexico
Energy, Minerals & Natural Resources Department
OIL CONSERVATION DIVISION
1220 South St. Francis Dr.
Santa Fe, NM 87505

Form C-102
Revised August 1, 2011
Submit one copy to appropriate
District Office

☐ AMENDED REPORT

WELL LOCATION AND ACREAGE DEDICATION PLAT

1 API Number 30-015-43772		2 Pool Code 96836		3 Pool Name Red Lake; Glorita - Yeco NE	
4 Property Code 308956		5 Property Name EAGLE 34J FEDERAL			6 Well Number 81
7 OGRID No. 277558		8 Operator Name LIME ROCK RESOURCES II-A, L.P.			9 Elevation 3590.8

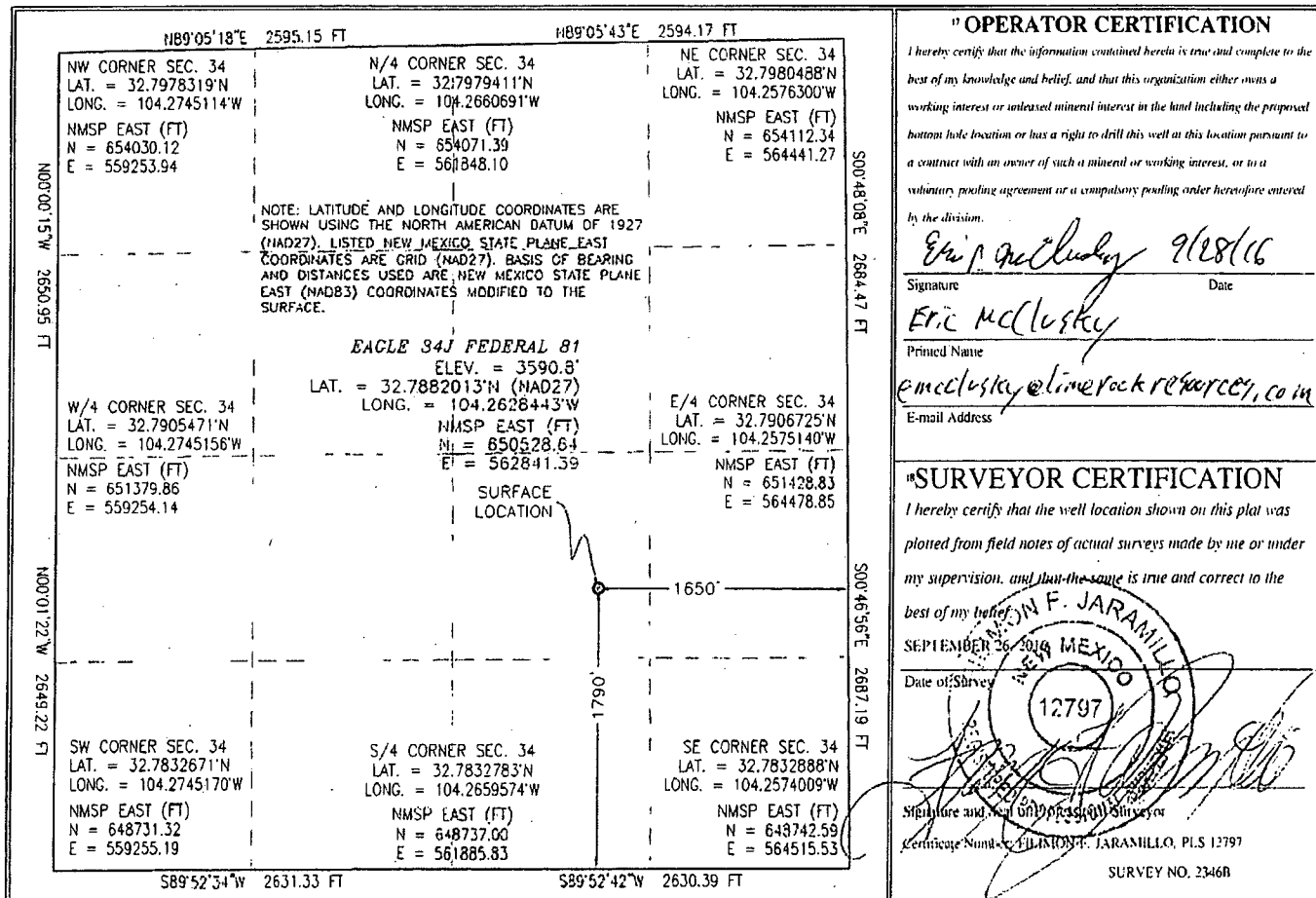
10 Surface Location

UL or lot no.	Section	Township	Range	Lot Idn	Feet from the	North/South line	Feet from the	East/West line	County
J	34	17 S	27 E		1790	SOUTH	1650	EAST	EDDY

11 Bottom Hole Location If Different From Surface

UL or lot no.	Section	Township	Range	Lot Idn	Feet from the	North/South line	Feet from the	East/West line	County
12 Dedicated Acres 40		13 Joint or Infill		14 Consolidation Code		15 Order No.			

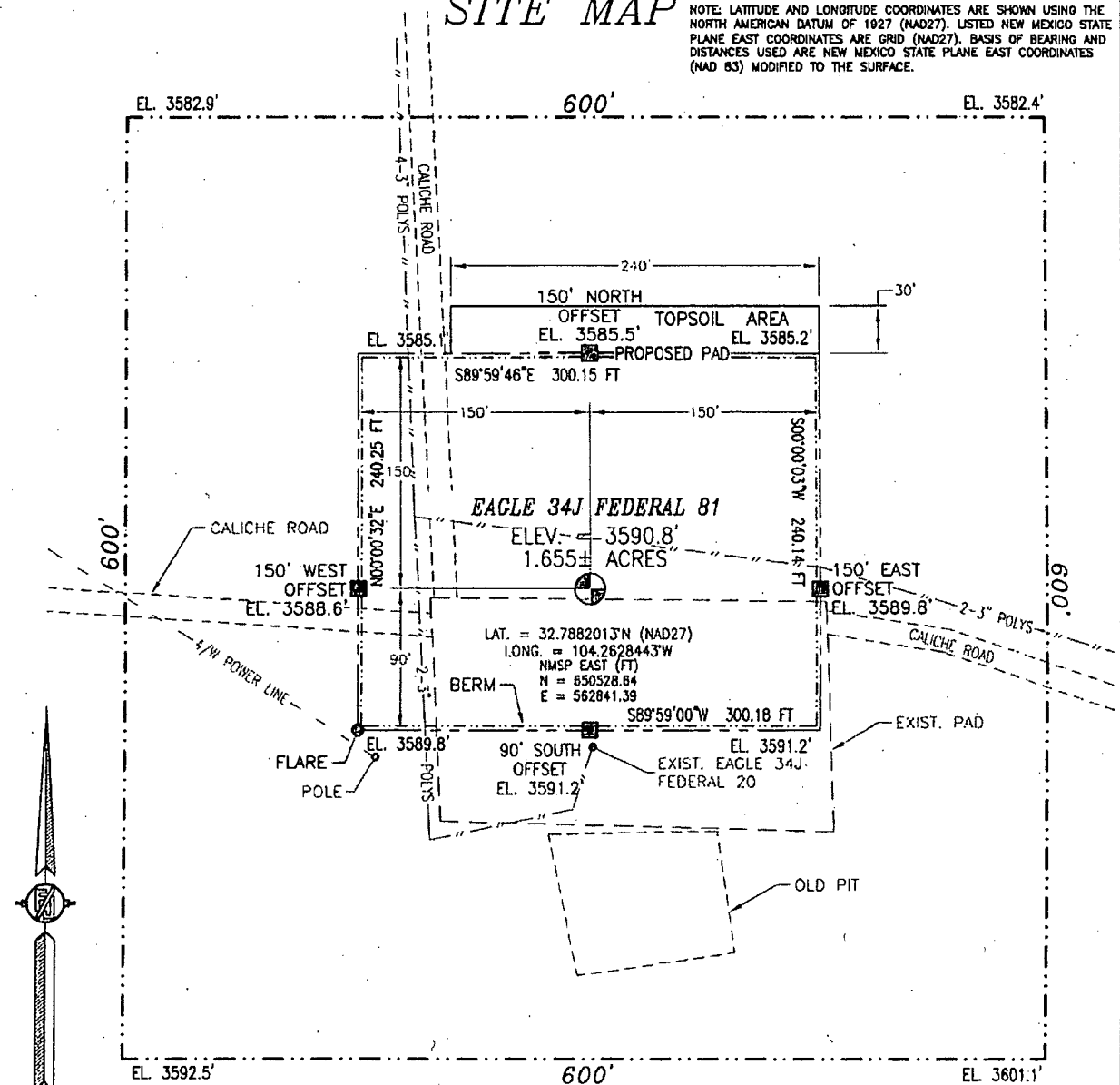
No allowable will be assigned to this completion until all interests have been consolidated or a non-standard unit has been approved by the division.



SECTION 34, TOWNSHIP 17 SOUTH, RANGE 27 EAST, N.M.P.M.
EDDY COUNTY, STATE OF NEW MEXICO

SITE MAP

NOTE: LATITUDE AND LONGITUDE COORDINATES ARE SHOWN USING THE NORTH AMERICAN DATUM OF 1927 (NAD27). LISTED NEW MEXICO STATE PLANE EAST COORDINATES ARE GRID (NAD27). BASIS OF BEARING AND DISTANCES USED ARE NEW MEXICO STATE PLANE EAST COORDINATES (NAD 83) MODIFIED TO THE SURFACE.



010 50 100 200

SCALE 1" = 100'
DIRECTIONS TO LOCATION

FROM CR 225 (EMPIRE) AND CR 227 (LITTLE DIAMOND) GO SOUTHWEST ON CR 227 0.5 MILE, TURN RIGHT ON CALICHE ROAD AND GO NORTH 0.1 MILE, BEND LEFT AND GO NORTHWEST 0.7 MILE, TURN RIGHT AND GO EAST 0.11 MILE, TURN LEFT AND GO NORTH 0.1 MILE, TURN RIGHT AND GO EAST 0.25 MILE, TURN RIGHT AND GO SOUTH 660' AND LOCATION IS 84' ON THE LEFT (EAST).

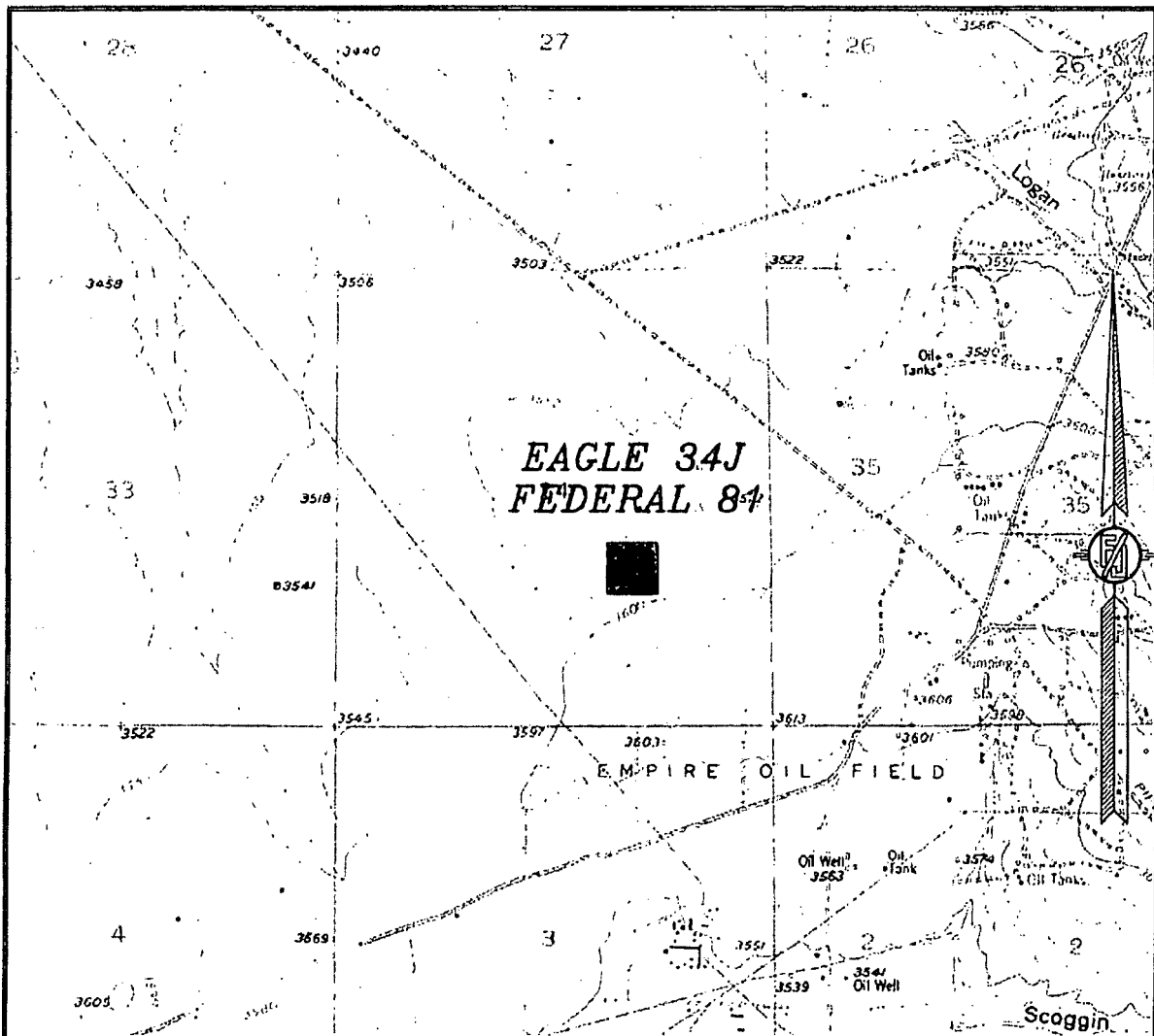
LIME ROCK RESOURCES II-A, L.P.
EAGLE 34J FEDERAL 81
LOCATED 1790 FT. FROM THE SOUTH LINE
AND 1650 FT. FROM THE EAST LINE OF
SECTION 34, TOWNSHIP 17 SOUTH,
RANGE 27 EAST, N.M.P.M.
EDDY COUNTY, STATE OF NEW MEXICO

SEPTEMBER 26, 2016

SURVEY NO. 2346B

MADRON SURVEYING, INC. 301 SOUTH CANAL (575) 234-3341 CARLSBAD, NEW MEXICO

SECTION 34, TOWNSHIP 17 SOUTH, RANGE 27 EAST, N.M.P.M.
EDDY COUNTY, STATE OF NEW MEXICO
LOCATION VERIFICATION MAP



USGS QUAD MAP:
SPRING LAKE

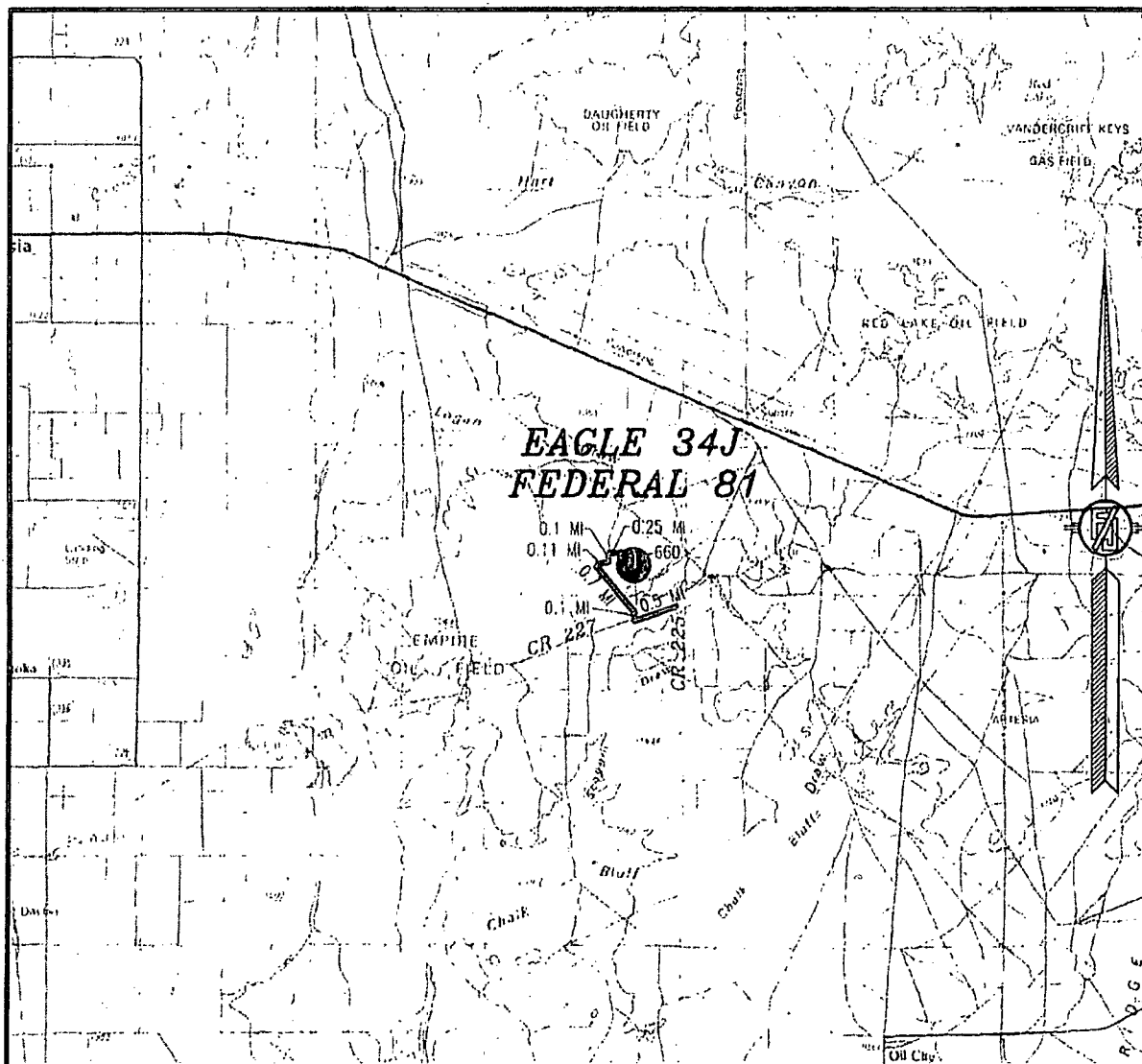
NOT TO SCALE

LIME ROCK RESOURCES II-A, L.P.
EAGLE 34J FEDERAL 81
LOCATED 1790 FT. FROM THE SOUTH LINE
AND 1650 FT. FROM THE EAST LINE OF
SECTION 34, TOWNSHIP 17 SOUTH,
RANGE 27 EAST, N.M.P.M.
EDDY COUNTY, STATE OF NEW MEXICO

SEPTEMBER 26, 2016

MADRON SURVEYING, INC. 301 SOUTH CANAL (575) 234-3341 CARLSBAD, NEW MEXICO
SURVEY NO. 2346B

SECTION 34, TOWNSHIP 17 SOUTH, RANGE 27 EAST, N.M.P.M.
EDDY COUNTY, STATE OF NEW MEXICO
VICINITY MAP



DISTANCES IN MILES

NOT TO SCALE

DIRECTIONS TO LOCATION

FROM CR 225 (EMPIRE) AND CR 227 (LITTLE DIAMOND) GO
SOUTHWEST ON CR 227 0.5 MILE, TURN RIGHT ON CALICHE ROAD
AND GO NORTH 0.1 MILE, BEND LEFT AND GO NORTHWEST 0.7 MILE,
TURN RIGHT AND GO EAST 0.11 MILE, TURN LEFT AND GO NORTH 0.1
MILE, TURN RIGHT AND GO EAST 0.25 MILE, TURN RIGHT AND GO
SOUTH 660' AND LOCATION IS 94' ON THE LEFT (EAST).

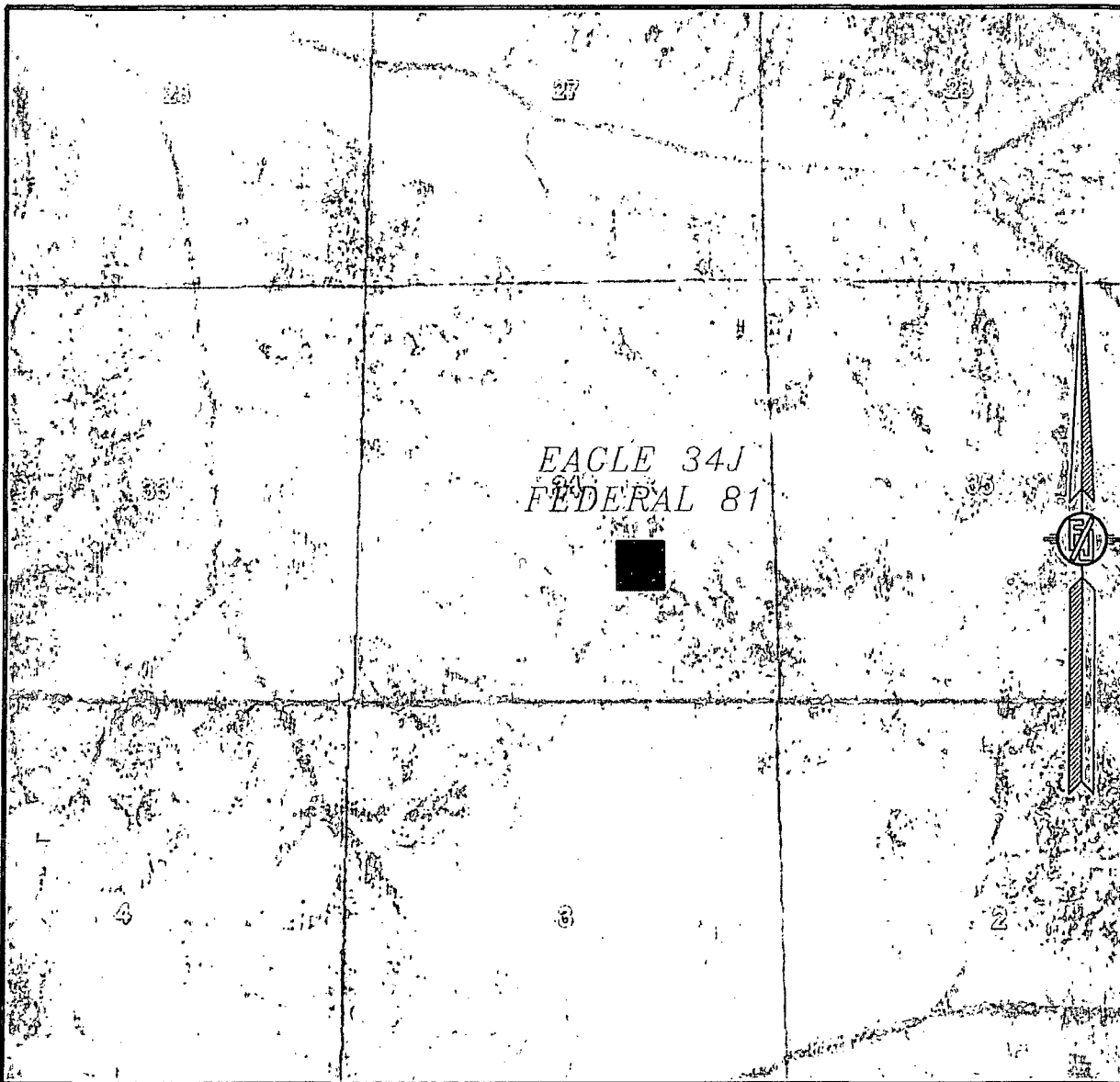
LIME ROCK RESOURCES II-A, L.P.
EAGLE 34J FEDERAL 81
LOCATED 1790 FT. FROM THE SOUTH LINE
AND 1650 FT. FROM THE EAST LINE OF
SECTION 34, TOWNSHIP 17 SOUTH,
RANGE 27 EAST, N.M.P.M.
EDDY COUNTY, STATE OF NEW MEXICO

SEPTEMBER 26, 2016

SURVEY NO. 2346B

MADRON SURVEYING, INC. 301 SOUTH CANAL (575) 234-3341 CARLSBAD, NEW MEXICO

SECTION 34, TOWNSHIP 17 SOUTH, RANGE 27 EAST, N.M.P.M.
EDDY COUNTY, STATE OF NEW MEXICO
AERIAL PHOTO



NOT TO SCALE
AERIAL PHOTO:
GOOGLE EARTH
MAY 2014

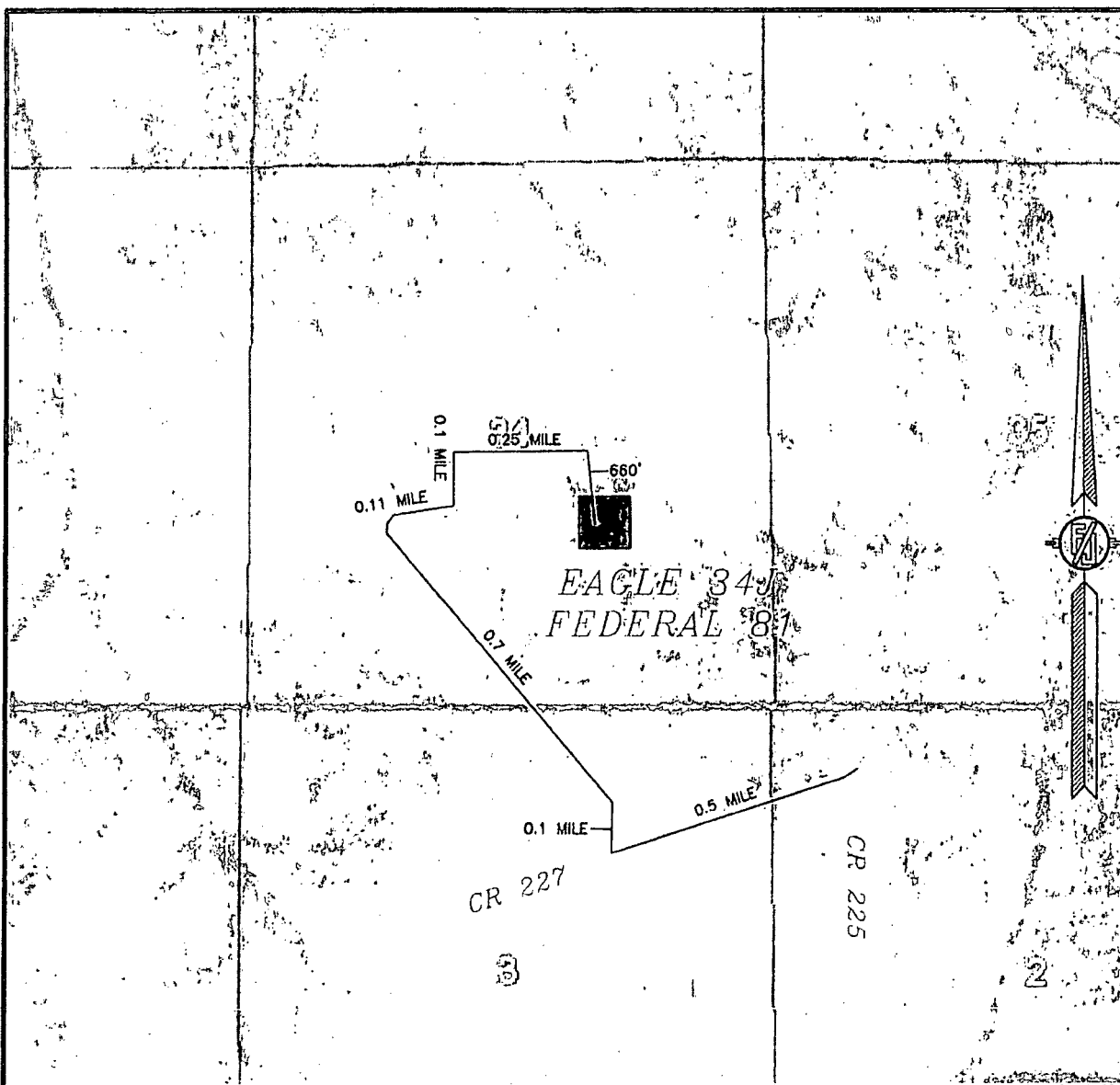
LIME ROCK RESOURCES II-A, L.P.
EAGLE 34J FEDERAL 81
LOCATED 1790 FT. FROM THE SOUTH LINE
AND 1650 FT. FROM THE EAST LINE OF
SECTION 34, TOWNSHIP 17 SOUTH,
RANGE 27 EAST, N.M.P.M.
EDDY COUNTY, STATE OF NEW MEXICO

SEPTEMBER 26, 2016

SURVEY NO. 2346B

MADRON SURVEYING, INC. 301 SOUTH CANAL CARLSBAD, NEW MEXICO
(575) 234-3341

SECTION 34, TOWNSHIP 17 SOUTH, RANGE 27 EAST, N.M.P.M.
EDDY COUNTY, STATE OF NEW MEXICO
ACCESS AERIAL ROUTE MAP



NOT TO SCALE
AERIAL PHOTO:
GOOGLE EARTH
MAY 2014

LIME ROCK RESOURCES II-A, L.P.
EAGLE 34J FEDERAL 81
LOCATED 1790 FT. FROM THE SOUTH LINE
AND 1650 FT. FROM THE EAST LINE OF
SECTION 34, TOWNSHIP 17 SOUTH,
RANGE 27 EAST, N.M.P.M.
EDDY COUNTY, STATE OF NEW MEXICO

SEPTEMBER 26, 2016

SURVEY NO. 2346B

MADRON SURVEYING, INC. 301 SOUTH CANAL (575) 234-3341 CARLSBAD, NEW MEXICO

State of New Mexico
Energy Minerals and Natural Resources

Form C-101
Revised July 18, 2013

Oil Conservation Division
1220 South St. Francis Dr
Santa Fe, NM 87505

☐ AMENDED Report

APPLICATION FOR PERMIT TO DRILL, RE-ENTER, DEEPEN, PLUGBACK, OR ADD A ZONE

¹ Operator Name and Address Lime Rock Resources II-A, L.P. 1111 Bagby Street, Suite 4600 Houston, Texas 77002		² OGRID Number 277558
		³ API Number 30-015-43772
⁴ Property Code 308956	⁵ Property Name Eagle 34J Federal	⁶ Well No. #81

⁷ Surface Location

UL - Lot	Section	Township	Range	Lot Idn	Feet From	N/S Line	Feet From	E/W Line	County
J	34	17S	27E		1790	S	1650	E	Eddy

⁸ Proposed Bottom Hole Location

UL - Lot	Section	Township	Range	Lot Idn	Feet From	N/S Line	Feet From	E/W Line	County
J	34	17S	27E		1790	S	1650	E	Eddy

⁹ Pool Information

Red Lake; Glorieta-Yeso NE	96836
----------------------------	-------

Additional Well Information

⁹ Work Type N	¹⁰ Well Type O	¹¹ Cable/Rotary R	¹² Lease Type F	¹³ Ground Level Elevation 3590.8
¹⁴ Multiple N	¹⁵ Proposed Depth 5250' MD / 5250' TVD	¹⁶ Formation Yeso	¹⁷ Contractor United Drilling, Inc.	¹⁸ Soud Date After 10/7/2016
Depth to Ground Water: Ft.		Distance from nearest fresh water well: Miles		Distance from nearest surface water: Miles

☒ We will be using a closed-loop system in lieu of lined

¹⁹ Proposed Casing and Cement Program

Type	Hole Size	Casing Size	Casing Weight/ft	Setting Depth	Sacks of Cement	Estimated TOC
Conductor	20"	14"	68.7	40	40	Surface
Surface	11"	8-5/8"	24	350	300	Surface
Production	7-7/8"	5-1/2"	17	5250	1000	Surface

Casing/Cement Program: Additional Comments

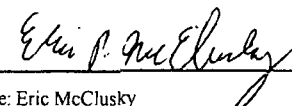
Surface Csg set 50' above first oil show & top of San Andres. Cement will be circulated as required.

Proposed Blowout Prevention Program

Type	Working Pressure	Test Pressure	Manufacturer
XLT 11"	5000	2000	National Varco

I hereby certify that the information given above is true and complete to the best of my knowledge and belief.

I further certify that I have complied with 19.15.14.9 (A) ☐ and/or 19.15.14.9 (B) NMAC 0, if ☒

Signature: 
Printed Name: Eric McClusky

Title: Operations Engineer

E-mail Address: EMcClusky@Limerockresources.com

Date: 9/28/2016

Phone: 713-360-5714

OIL CONSERVATION DIVISION

Approved By:

Title:

Approved Date:

Expiration Date:

Conditions of Approval Attached

Lime Rock Resources II-A, L.P.
Drilling Plan

Eagle 34J Federal #81
1790' FSL 1650' FEL
(J) 34-17S-27E
Eddy County, NM

1. The elevation of the unprepared ground is 3590.8 feet above sea level.
2. The geologic name of the surface formation is Quaternary – Alluvium.
3. A rotary rig will be utilized to drill the well to 5250' and run casing. This equipment will be rigged down and the well will be completed with a workover rig.
4. Well will be drilled to a total proposed depth of 5250' MD.
5. Estimated tops of geologic markers:
6. Estimated depths at which anticipated oil, gas, or other mineral bearing formations are expected to be encountered:

	MD	TVD
Quaternary – Alluvium	Surface	Surface
Yates	98	98
7 Rivers	328	328
Queen	840	840
Grayburg	638	638
Premier	922	922
San Andres	965	965
Glorieta	2406	2406
Yeso	2496	2496
Tubb	3909	3909
TD	5250	5250

	MD	TVD
Yates	98	98
7 Rivers	328	328
Queen	840	840
Grayburg	638	638
Premier	922	922
San Andres	965	965
Glorieta	2406	2406
Yeso	2496	2496
Tubb	3909	3909
TD	5250	5250

7. Proposed Casing and Cement program is as follows

Type	Hole	Casing	Wt	Grade	Thread	Depth	Sx	Density	Yield	Components
Conductor	20"	14"	68.7	B	Welded	40	40			Ready Mix
Surface	11"	8-5/8"	24	J-55	ST&C	350	300	14.8	1.4	Cl C Cmt + 0.25 lbs/sk Cello Flake + 2% CaCl ₂
Intermediate										
Production	7-7/8"	5-1/2"	17	J-55	LT&C	5250	300	12.8	1.9	(35:65) Poz/Cl C Cmt + 5% NaCl + 0.25 lbs/sk Cello Flake + 5 lbs/sk LCM-1 + 0.2% R-3 + 6% Gel
							700	14.8	1.3	Class C w/ 0.6% R-3 and 1/4 pps cello flake

8. Proposed Mud Program is as follows

Depth	0-350	350-5000	5000-5250
Mud Type	Fresh Water Mud	Brine	Brine, Salt Gel, & Starch
Properties			
MW	8.4-9.2	9.8-10.1	9.9-10.1
pH	9.0-10.5	10.0-12.0	10.0-12.0
WL	NC	NC	20-30
Vis	28-34	28-29	32-34
MC	NC	NC	<2
Solids	NC	<2%	<3%
Pump Rate	300-500 gpm	375-425 gpm	400-425 gpm
Special		Use Poymers sticks and MF-55 Hi-Vis Sweeps as necessary	Hi Vis Sweeps, add acid and starch as req. Raise Vis to 35 for log.

9. **Pressure Control Equipment:** See Attached Description and diagram of Pressure Control Equipment.

10. **Testing, Logging and Coring Program**

Testing Program No drill stem tests are anticipated

Electric Logging Program SGR-DLL-CDL-CNL Quad Combo from 5250 to surf. Csg. SGR-CNL to Surf.

Coring Program: No full or sidewall-cores are anticipated.

11. **Potential Hazards:**

No abnormal temperatures or pressures are expected. There is no known presence of H₂S in this H₂S is encountered the operator will comply with the provisions of Onshore Oil and Gas Order No. personnel will be familiar with all aspects of safe operation of equipment being used to drill this well Estimated BHP 2310 psi based on 0.44 x TD. The estimated BHT is 125 degrees F.

12. **Duration of Operations:**

Anticipated spud date will be soon after approval and as soon as a rig will be available. Move in operations and drilling is expected to take 10 days. An additional 14 days will be needed it complet well and to construct surface facilities.

Hydrogen Sulfide Drilling Plan Summary

A. All personnel shall receive proper H₂S training in accordance with Onshore Order 6 III.C.3.a.

B. Briefing Area: two perpendicular areas will be designated by signs and readily accessible.

C. Required Emergency Equipment:

■ Well control equipment

- a. Flare line 150' from wellhead to be ignited by flare gun.
- b. Choke manifold with a remotely operated choke.
- c. Mud/gas separator

■ Protective equipment for essential personnel.

Breathing apparatus:

- a. Rescue Packs (SCBA) — 1 unit shall be placed at each breathing area, 2 shall be stored in the safety trailer.
- b. Work/Escape packs — 4 packs shall be stored on the rig floor and contain sufficiently long air hoses as to not to restrict work activity.
- c. Emergency Escape Packs — 4 packs shall be stored in the doghouse for emergency evacuation.

Auxiliary Rescue Equipment:

- a. Stretcher
- b. Two OSHA full body harness
- c. 100 ft 5/8 inch OSHA approved rope
- d. 1-20# class ABC fire extinguisher

■ H₂S detection and monitoring equipment:

The stationary detector with three sensors will be placed in the upper dog house if equipped, set to visually alarm @ 10 ppm and audible @ 14 ppm. Calibrate a minimum of every 30 days or as needed.

The sensors will be placed in the following places: Rig floor / Bell nipple / End of flow line or where well bore fluid is being discharged.

(Gas sample tubes will be stored in the safety trailer)

■ Visual warning systems:

- a. One color code condition sign will be placed at the entrance to the site reflecting the possible conditions at the site.
- b. A colored condition flag will be on display, reflecting the current condition at the site at the time.
- c. Two wind socks will be placed in strategic locations, visible from all angles.

■ Mud program:

The mud program has been designed to minimize the volume of H₂S circulated to surface. The operator will have the necessary mud products to minimize hazards while drilling in H₂S bearing zones.

Metallurgy:

- a. All drill strings, casings, tubing, wellhead, blowout preventer, drilling spool, kill lines, choke manifold and lines, and valves shall be suitable for H₂S service.
- b. All elastomers used for packing and seals shall be H₂S trim.

Communication:

Communication will be via two way radio in emergency and company vehicles. Cell phones and land lines where available.

H2S CONTINGENCY DRILLING PLAN EMERGENCY CONTACTS

Company Offices Lime Rock Houston Office	713-292-9510
Answering Service (After Hours)	713-292-9555
Artesia, NM Office	575-748-9724
Roswell, NM	575-623-8424

KEY PERSONNEL

Name	Title	Location	Office #	Cell #	Home #
Steve Hunter	Production Manager	Houston	713-292-9516	832-330-7313	Same as Cell
Spencer Cox	Operations Engineer	Houston	713-292-9528	432-254-5140	Same as Cell
Eric McClusky	Operations Engineer	Houston	713-360-5714	832-491-3079	405-821-0534
Jerry Smith	Assistant Production Supervisor	Artesia	575-748-9724	505-918-0556	575-746-2478
Michael Barrett	Production Supervisor	Roswell	575-623-8424	505-353-2644	575-623-4707
Gary McClland	Well Site Supervisor	Rotates on Site	NA	903-503-8997	NA
Dave Williamson	Well Site Supervisor	Rotates on Site	NA	575-308-9980	NA

Agency Call List		
City	Agency or Office	Telephone #
Artesia	Ambulance	911
Artesia	State Police	575-746-2703
Artesia	Sherriff's Office	575-746-9888
Artesia	City Police	575-746-2703
Artesia	Fire Department	575-746-2701
Artesia	Local Emergency Planning Committee	575-746-2122
Artesia	New Mexico OCD District II	575-748-1283
Carlsbad	Ambulance	911
Carlsbad	State Police	575-885-3137
Carlsbad	Sherriff's Office	575-887-7551
Carlsbad	City Police	575-885-2111
Carlsbad	Fire Department	575-885-2111
Carlsbad	Local Emergency Planning Committee	575-887-3798
Carlsbad	US DOI Bureau of Land Management	575-887-6544
State Wide	New Mexico Emergency Response Commisssion ("NMERC")	505-476-9600
State Wide	NMERC 24 Hour Number	505-827-9126
State Wide	New Mexico State Emergency Operations Center	505-476-9635
National	National Emergency Response Center (Washington D.C.)	800-424-8802

Emergency Services				
Name	Service	Location	Telephone Number	Alternate Number
Boots & Coots International Well Control	Well Control	Houston / Odessa	1-800-256-9688	281-931-8884
Cudd Pressure Control	Well Control/Pumping	Odessa	915-699-0139	915-563-3356
Baker Hughes Inc.	Pumping Services	Artesia, Hobbs & Odessa	575-746-2757	Same
Total Safety	Safety Equipment & Personnel	Artesia	575-746-2847	Same
Cutter Oilfield Services	Drilling Systems Equipment	Midland	432-488-6707	Same
Safety Dog	Safety Equipment & Personnel	Artesia	575-748-5847	575-441-1370
Fighting for Life	Emergency Helicopter Evacuation	Lubbock	806-743-9911	Same
Aerocare	Emergency Helicopter Evacuation	Lubbock	806-747-8923	Same
Med Flight Air Ambulance	Emergency Helicopter Evacuation	Albuquerque	505-842-4433	Same
Artesia General Hospital	Emergency Medical Care	Artesia	575-748-3333	702 North 13th Street

Pressure Control

The blowout preventer equipment (BOP) will consist of a 5000 psi rated, "XLT" type, National VARCO double ram preventer that will be tested to a maximum pressure of 2000 psi. The unit will be hydraulically operated and the ram type preventer will be equipped with blind rams on top and drill pipe rams on bottom. The 2M BOP will be installed on the 8 5/8" surface casing and utilized continuously until total depth is reached. All casing strings will be tested as per Onshore Order #2. This also includes a thirty day (30) test, should the rig still be operating on the same well in thirty days

Pipe rams will be operated and checked each 24 hour period and each time the drill pipe is out of the hole. These functional tests will be documented on the daily

The BOP equipment will consist of the following:

- Double ram with blind rams (top) and pipe rams (bottom),
- Drilling spool, or blowout preventer with 2 side outlets (choke side shall be a 2" minimum diameter, kill side will be at least 2 inch diameter),
- Kill line (2 inch minimum),
- A minimum of 2 choke line valves (2 inch minimum),
- 2 inch diameter choke line,
- 2 kill valves, one of which will be a check valve (2 inch minimum),
- 2 chokes, one of which will be capable of remote operation,
- Pressure gauge on choke manifold,
- Upper Kelly cock valve with handle available,
- Safety valve and subs to fit all drill string connections in use,
- All BOPE connections subjected to well pressure will be flanged, welded, or clamped,
- A Fill-up line above the uppermost preventer.

MGV = Manual Gate Valve
CKV = Check Valve
HCR = Hydraulically Controlled Remote Valve

NOTE: All lines, valves and chokes are shown minimum size allowed, but may be larger

Lime Rock Resources II-A, L.P.

Eagle 34J Federal #81

Unit J, S34-T17S-R27E, Eddy County, NM

Design: Closed Loop System with roll-off steel bins (pits)

CRI/HOBBS will supply (2) bins (100 bbl) volume, rails and transportation relating to the Close Loop System. Specification of the Closed Loop System is attached.

Contacts: Gary Wallace (432) 638-4076 Cell (575) 393-1079 Office

Scomi Oil Tool: Supervisor – Armando Soto (432) 553-7979 Hobbs, NM

Monitoring 24 Hour service

Equipment:

Centrifuges – Derrick Brand

Rig Shakers – Brandt Brand

D-watering Unit

Air pumps on location for immediate remediation process

Layout of Close Loop System with bins, centrifuges and shakers attache

Cuttings and associated liquids will be hauled to a State regulated third party disposal site (CRI or Controlled Recc Inc.). The disposal site permit is DFP = #R916

2- (250 bbl) tanks to hold fluid

2-CRI bins with track system

2-500 bbl frac tanks with fresh water

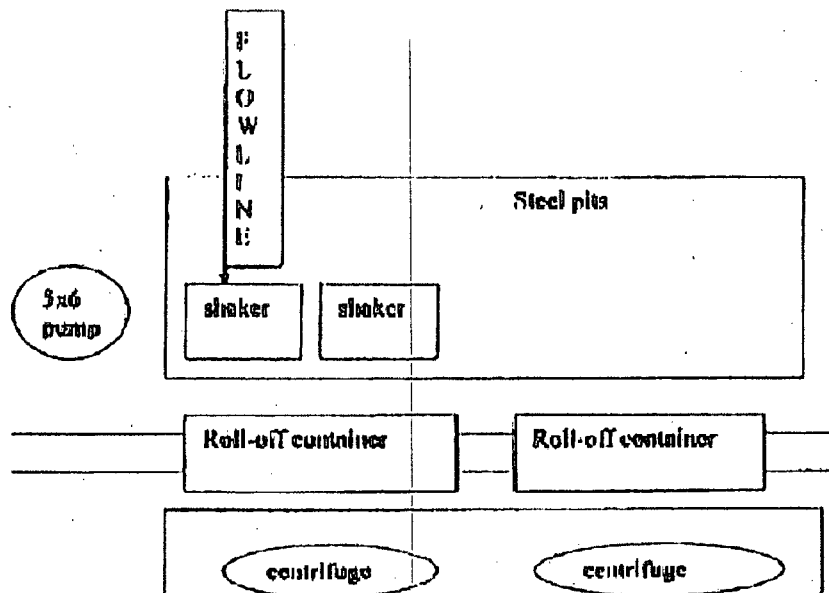
2-500 bbl frac tanks for brine water

Operations:

Closed Loop System equipment will be inspected daily by each tour and any necessary maintenance perfo leak in system will be repaired and/or contained immediately. OCD will be notified within 48 hours of ar Remediation process will start immediate!

Closure:

During drilling operations all liquids, drilling fluids and cuttings will be hauled off via CRI equipment to DFP #



This will be maintained by 24 hour solids control personnel that stay on location.

TOMMY WILSON



**CLOSED LOOP
SPECIALTY**

Office: 575.746.1699

Cell: 575.746.6367