

DISTRICT I
1625 N. French Dr., Hobbs, NM 88240
Phone: (575) 393-6161 Fax: (575) 393-0720

DISTRICT II
811 S. First St., Artesia, NM 88210
Phone: (575) 748-1283 Fax: (575) 748-9720

DISTRICT III
1000 Rio Brazos Road, Aztec, NM 87410
Phone: (505) 334-6178 Fax: (505) 334-6170

DISTRICT IV
1220 S. St. Francis Dr., Santa Fe, NM 87505
Phone: (505) 476-3460 Fax: (505) 476-3462

State of New Mexico
Energy, Minerals & Natural Resources Department
OIL CONSERVATION DIVISION
1220 South St. Francis Dr.
Santa Fe, New Mexico 87505

OIL CONSERVATION
ARTESIA DISTRICT

Form C-102
Revised August 1, 2011
Submit one copy to appropriate
District Office

MAR 05 2013

RECEIVED DAMENDED REPORT

WELL LOCATION AND ACREAGE DEDICATION PLAT

API Number 30-015-43428	Pool Code 9627	Pool Name Willow Lake, Bone Spring, SE
Property Code 317429	Property Name CORRAL CANYON FEDERAL CORN	Well Number 1H
OGRID No. 005380	Operator Name XTO ENERGY	Elevation 2912'

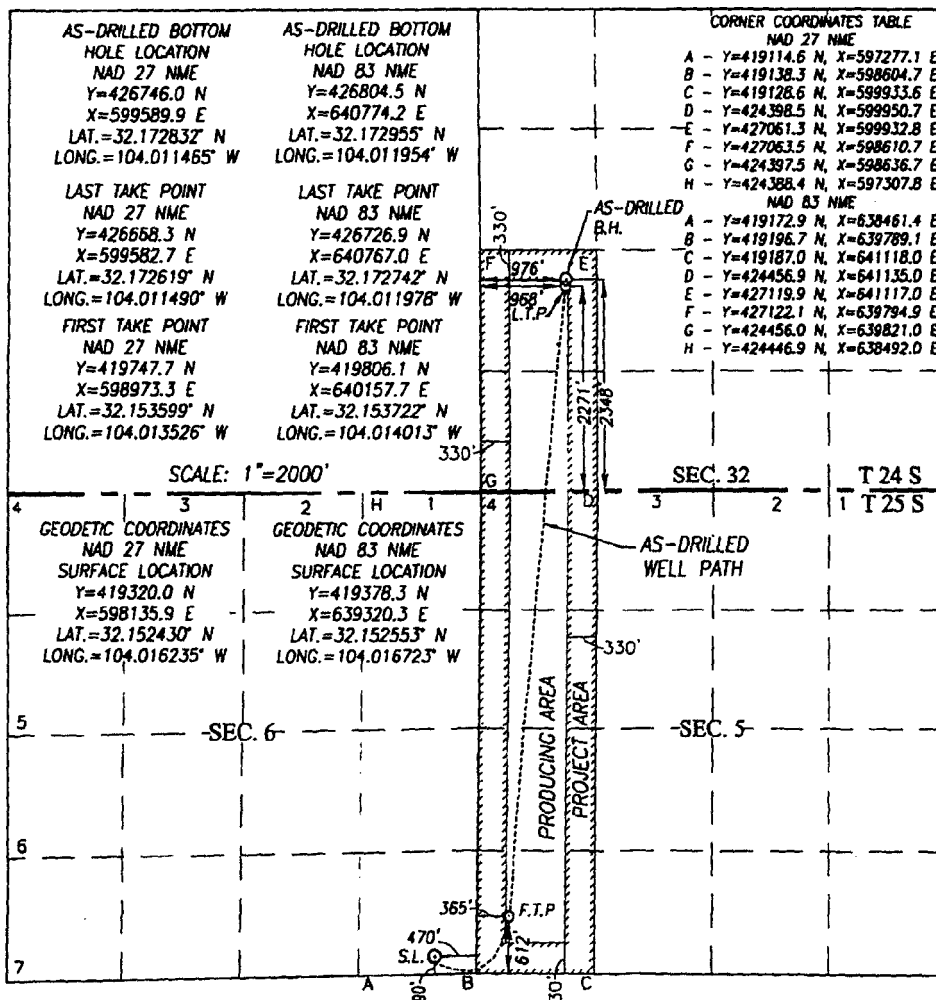
Surface Location

UL or lot No.	Section	Township	Range	Lot Idn	Feet from the	North/South line	Feet from the	East/West line	County
P	6	25-S	29-E		190	SOUTH	470	EAST	EDDY

As-Drilled Bottom Hole Location If Different From Surface

UL or lot No.	Section	Township	Range	Lot Idn	Feet from the	North/South line	Feet from the	East/West line	County
L	32	24-S	29-E		2348	SOUTH	976	WEST	EDDY
Dedicated Acres 239.44	Joint or Infill	Consolidation Code	Order No.						

NO ALLOWABLE WILL BE ASSIGNED TO THIS COMPLETION UNTIL ALL INTERESTS HAVE BEEN CONSOLIDATED OR A NON-STANDARD UNIT HAS BEEN APPROVED BY THE DIVISION



<p>OPERATOR CERTIFICATION</p> <p>I hereby certify that the information herein is true and complete to the best of my knowledge and belief, and that this organization either owns a working interest or unleased mineral interest in the land including the proposed bottom hole location or has a right to drill this well at this location pursuant to a contract with an owner of such mineral or working interest, or to a voluntary pooling agreement or a compulsory pooling order heretofore entered by the division.</p> <p>Signature: <u>Anthony Rabreau</u> Date: <u>11-2-10</u></p> <p>Printed Name: <u>Anthony Rabreau</u></p> <p>E-mail Address: <u>xtoenergy.com</u></p>	
<p>SURVEYOR CERTIFICATION</p> <p>I hereby certify that the well location shown on this plat was plotted from field notes of actual surveys made by me or under my supervision, and that the same is true and correct to the best of my belief.</p> <p>APRIL 2, 2014</p> <p>Date of Survey</p> <p>Signature & Seal of Professional Surveyor:</p> <p><u>Ronald J. Eidson</u> 10/27/2010</p> <p>Certificate Number: <u>12641</u> Gary G. Eidson <u>3239</u> Ronald J. Eidson</p> <p>ACK REL. W.O.: 14110214 JWSC W.O.: 16.13 0851</p>	