

District I  
1625 N. French Dr., Hobbs, NM 88240  
Phone: (575) 393-6161 Fax: (575) 393-0720  
District II  
811 S. First St., Artesia, NM 88210  
Phone: (575) 748-1283 Fax: (575) 748-9720  
District III  
1000 Rio Brazos Road, Aztec, NM 87410  
Phone: (505) 334-6178 Fax: (505) 334-6170  
District IV  
1220 S. St. Francis Dr., Santa Fe, NM 87505  
Phone: (505) 476-3460 Fax: (505) 476-3462

**NM OIL CONSERVATION**  
State of New Mexico  
Energy, Minerals & Natural Resources Department  
**OIL CONSERVATION DIVISION**  
1220 South St. Francis Dr.  
Santa Fe, NM 87505

Form C-102  
Revised August 1, 2011  
Submit one copy to appropriate  
District Office

RECEIVED

☒ AMENDED REPORT

**WELL LOCATION AND ACREAGE DEDICATION PLAT**

1 API Number <b>30-015-43455</b>	2 Pool Code <b>97816</b>	3 Pool Name <b>WC-015-S2S271SA; Bone Spring</b>
4 Property Code <b>315640</b>	5 Property Name <b>COTTONBERRY 20 FEDERAL COM</b>	
6 Well Number <b>2H</b>	7 OGRID No. <b>215099</b>	
8 Operator Name <b>CIMAREX ENERGY CO.</b>		9 Elevation <b>3136.8'</b>

**10 Surface Location**

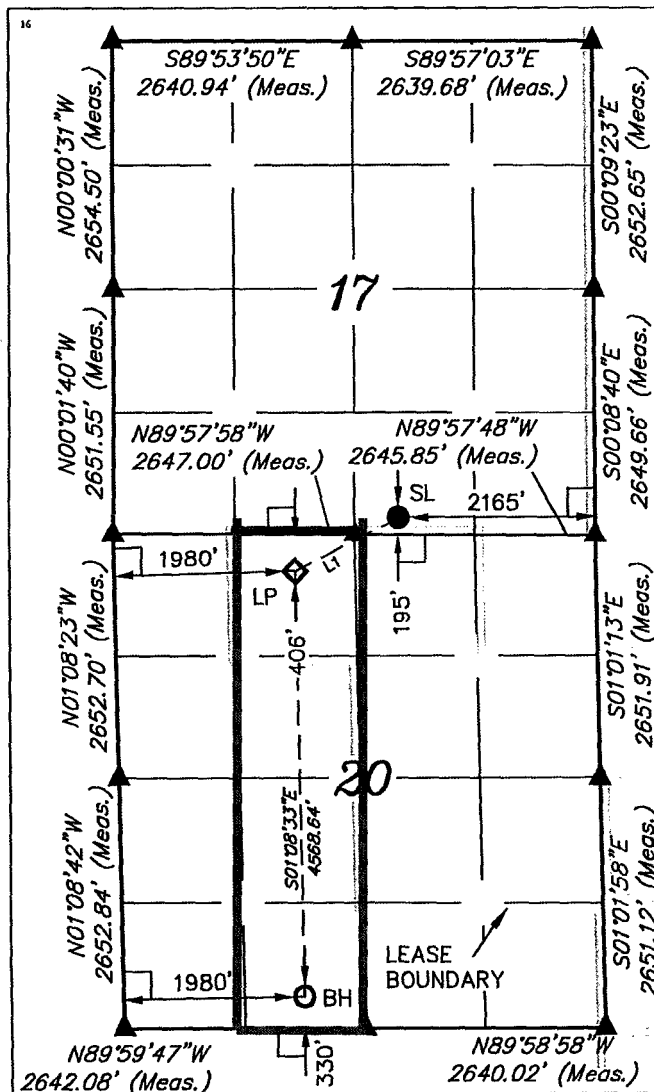
UL or lot no.	Section	Township	Range	Lot Idn	Feet from the	North/South line	Feet from the	East/West line	County
O	17	25S	27E		195	SOUTH	2165	EAST	EDDY

**11 Bottom Hole Location If Different From Surface**

UL or lot no.	Section	Township	Range	Lot Idn	Feet from the	North/South line	Feet from the	East/West line	County
N	20	25S	27E		330	SOUTH	1978	WEST	EDDY

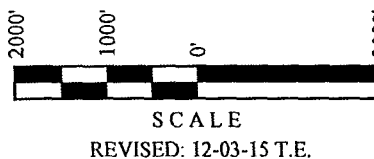
12 Dedicated Acres <b>160</b>	13 Joint or Infill	14 Consolidation Code	15 Order No.
----------------------------------	--------------------	-----------------------	--------------

No allowable will be assigned to this completion until all interests have been consolidated or a non-standard unit has been approved by the division.



<b>NAD 83 (SURFACE LOCATION)</b>	
LATITUDE = 32°07'23.80" (32.123278)	
LONGITUDE = 104°12'38.90" (104.210806)	
<b>NAD 27 (SURFACE LOCATION)</b>	
LATITUDE = 32°07'23.36" (32.123156)	
LONGITUDE = 104°12'37.12" (104.210322)	
<b>STATE PLANE NAD 83 (N.M. EAST)</b>	
N: 408605.68 E: 579268.84	
<b>STATE PLANE NAD 27 (N.M. EAST)</b>	
N: 408548.29 E: 538085.60	
<b>NAD 83 (TARGET BOTTOM HOLE)</b>	
LATITUDE = 32°06'32.67" (32.109075)	
LONGITUDE = 104°12'51.09" (104.214192)	
<b>NAD 27 (TARGET BOTTOM HOLE)</b>	
LATITUDE = 32°06'32.23" (32.108953)	
LONGITUDE = 104°12'49.31" (104.213697)	
<b>STATE PLANE NAD 83 (N.M. EAST)</b>	
N: 403438.22 E: 578226.06	
<b>STATE PLANE NAD 27 (N.M. EAST)</b>	
N: 403380.94 E: 537042.75	

LINE TABLE		
LINE	DIRECTION	LENGTH
L1	S62°13'05"W	1287.21'



▲ = SECTION CORNERS LOCATED.

**11 OPERATOR CERTIFICATION**

I hereby certify that the information contained herein is true and complete to the best of my knowledge and belief, and that this organization either owns a working interest or unleased mineral interest in the land including the proposed bottom hole location or has a right to drill this well at this location pursuant to a contract with an owner of such a mineral or working interest, or to a voluntary pooling agreement or a compulsory pooling order heretofore entered by the division.

Signature: *Terri Stathem* Date: **2-21-17**

Printed Name: **Terri Stathem**

E-mail Address: **tstathem@cimarex.com**

**12 SURVEYOR CERTIFICATION**

I hereby certify that the well location shown on this plat was plotted from field notes of actual surveys made by me or under my supervision, and that the same is true and correct to the best of my belief.

November 13, 2015

Date of Survey  
Signature and Seal of Professional Surveyor:



Certificate Number: