

DISTRICT I
1625 N. French Dr., Hobbs, NM 88240
Phone (575) 393-6161 Fax (575) 393-0720
DISTRICT II
811 S. First St., Artesia, NM 88210
Phone (575) 748-1283 Fax (575) 748-9720
DISTRICT III
1000 Rio Brazos Road, Aztec, NM 87410
Phone (505) 334-6178 Fax (505) 334-6170
DISTRICT IV
1220 S. St. Francis Dr., Santa Fe, NM 87505
Phone (505) 476-3460 Fax (505) 476-3462

State of New Mexico
Energy, Minerals & Natural Resources **HOBBS OCD**
OIL CONSERVATION DIVISION
1220 South St. Francis Dr.
Santa Fe, New Mexico 87505

Form C-102
Revised August 1, 2011
Submit one copy to appropriate
District Office

X AMENDED REPORT

RECEIVED

WELL LOCATION AND ACREAGE DEDICATION PLAT

API Number 30-015-43720	Pool Code 76780 98220	Pool Name Forehand Ranch-Wolfeamp
Property Code 316111	Property Name FOREHAND RANCH 22 FEDERAL COM	Well Number 6H
OGRID No. 249099	Operator Name CAZA OPERATING, LLC	Elevation 3143'

Surface Location

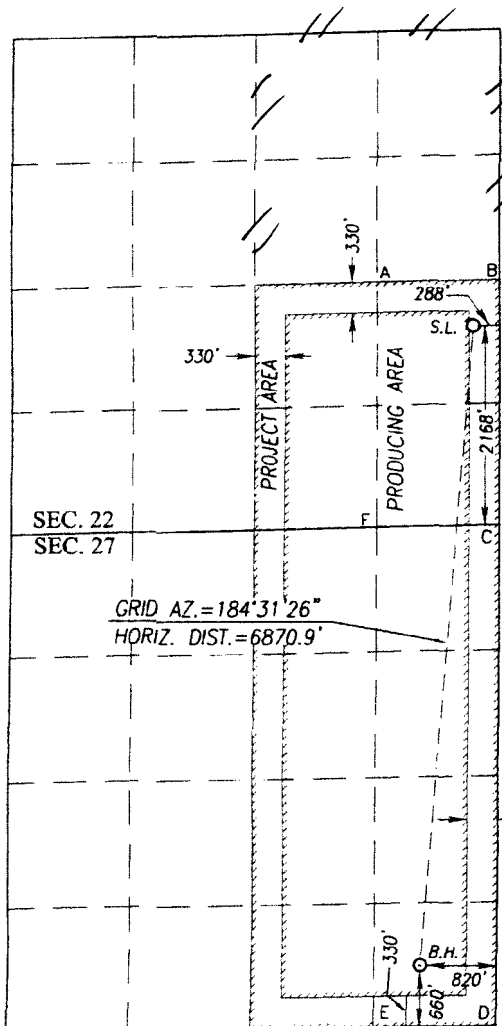
UL or lot No.	Section	Township	Range	Lot Idn	Feet from the	North/South line	Feet from the	East/West line	County
I	22	23-S	27-E		2168	SOUTH	288	EAST	EDDY

Bottom Hole Location If Different From Surface

UL or lot No.	Section	Township	Range	Lot Idn	Feet from the	North/South line	Feet from the	East/West line	County
P	27	23-S	27-E		660	SOUTH	820	EAST	EDDY

Dedicated Acres 480 640	Joint or Infill	Consolidation Code	Order No.
----------------------------	-----------------	--------------------	-----------

NO ALLOWABLE WILL BE ASSIGNED TO THIS COMPLETION UNTIL ALL INTERESTS HAVE BEEN CONSOLIDATED OR A NON-STANDARD UNIT HAS BEEN APPROVED BY THE DIVISION



GEODETIC COORDINATES
SURFACE LOCATION
NAD 83 NME
Y= 469034.6 N
X= 591678.2 E
LAT.=32.289345° N
LONG.=104.170424° W

GEODETIC COORDINATES
SURFACE LOCATION
NAD 27 NME
Y= 468975.8 N
X= 550495.8 E
LAT.=32.289225° N
LONG.=104.169926° W

CORNER COORDINATES TABLE
NAD 27 NME

A - Y= 469440.1 N, X= 549470.5 E
B - Y= 469470.1 N, X= 550784.5 E
C - Y= 466813.9 N, X= 550780.2 E
D - Y= 461480.4 N, X= 550772.7 E
E - Y= 461460.8 N, X= 549453.0 E
F - Y= 466785.2 N, X= 549466.6 E

CORNER COORDINATES TABLE
NAD 83 NME

A - Y= 469498.9 N, X= 590652.9 E
B - Y= 469528.9 N, X= 591966.9 E
C - Y= 466872.8 N, X= 591962.6 E
D - Y= 461539.0 N, X= 591955.3 E
E - Y= 461519.4 N, X= 590635.5 E
F - Y= 466844.0 N, X= 590649.1 E

BOTTOM HOLE LOCATION
NAD 83 NME
Y= 462186.7 N
X= 591136.4 E
LAT.=32.270523° N
LONG.=104.172211° W

BOTTOM HOLE LOCATION
NAD 27 NME
Y= 462128.1 N
X= 549953.8 E
LAT.=32.270404° N
LONG.=104.171713° W

OPERATOR CERTIFICATION

I hereby certify that the information herein is true and complete to the best of my knowledge and belief, and that this organization either owns a working interest or unleased mineral interest in the land including the proposed bottom hole location or has a right to drill this well at this location pursuant to a contract with an owner of such mineral or working interest, or to a voluntary pooling agreement or a compulsory pooling order heretofore entered by the division.

Signature: Steve Morris
Date: 02/01/2017
Printed Name: Steve Morris
E-mail Address: steve.morris@mojoenergy.com

SURVEYOR CERTIFICATION

I hereby certify that the well location shown on this plat was plotted from field notes of actual surveys made by me or under my supervision, and that the same is true and correct to the best of my belief.

JANUARY 28, 2015

Date of Survey
Signature & Seal of Professional Surveyor:

Signature: Ronald J. Eidson
Date: 02/01/2017
Certificate Number: Gary G. Eidson 12641
Ronald J. Eidson 3239
ACK REV: 201/17 REL W.O.: 15.13.0309 JWSC W.O.: 15.13.0357