

NM OIL CONSERVATION ARTESIA DISTRICT

DISTRICT I
1625 N. French Dr., Hobbs, NM 88240
Phone (575) 393-6161 Fax: (575) 393-0720

DISTRICT II
811 S. First St., Artesia, NM 88210
Phone (575) 748-1253 Fax: (575) 748-9720

DISTRICT III
1000 Rio Brazos Rd., Aztec, NM 87410
Phone (505) 334-6176 Fax: (505) 334-6170

DISTRICT IV
1220 S. St. Francis Dr., Santa Fe, NM 87505
Phone (505) 476-3480 Fax: (505) 476-3482

APR 26 2017

State of New Mexico
Energy, Minerals and Natural Resources Department

NM OIL CONSERVATION Form C-102
ARTESIA DISTRICT Revised August 1, 2011

APR 26 2017 Submit one copy to appropriate District Office

RECEIVED OIL CONSERVATION DIVISION
1220 South St. Francis Dr.
Santa Fe, New Mexico 87505

RECEIVED

WELL LOCATION AND ACREAGE DEDICATION PLAT

☐ AMENDED REPORT

API Number 30-015-44144	Pool Code 64010	Pool Name Welch Bone Spring 64010
Property Code 317672	Property Name PLUCKY BUU FEDERAL COM	Well Number 5H
OGRID No. 125575	Operator Name EOG Y RESOURCES, INC.	Elevation 3367'

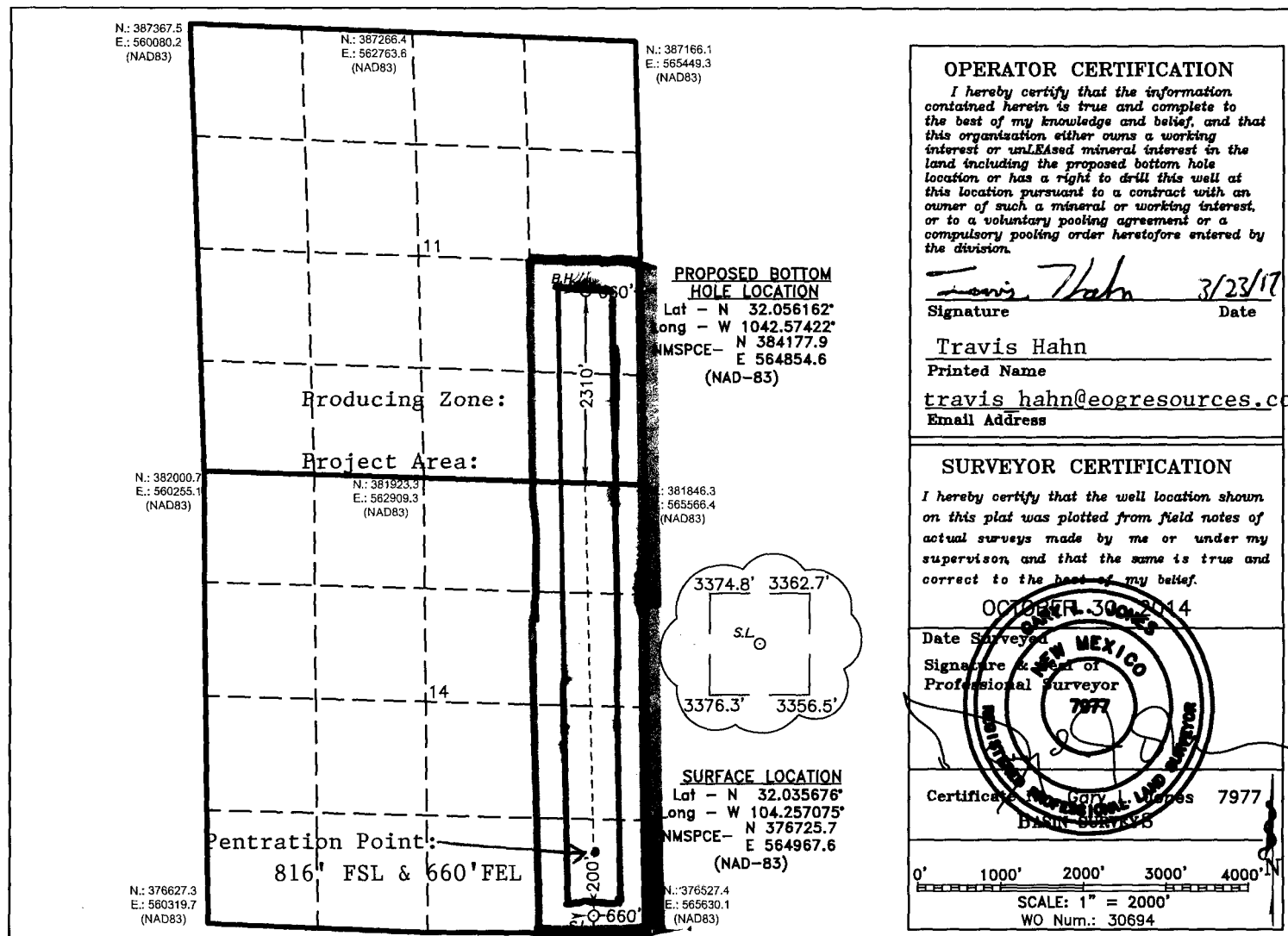
Surface Location									
UL or lot No.	Section	Township	Range	Lot Idn	Feet from the	North/South line	Feet from the	East/West line	County
P	14	26 S	26 E		200	SOUTH	660	EAST	EDDY

Bottom Hole Location If Different From Surface

UL or lot No.	Section	Township	Range	Lot Idn	Feet from the	North/South line	Feet from the	East/West line	County
I	11	26 S	26 E		2310	SOUTH	660	EAST	EDDY

Dedicated Acres	Joint or Infill	Consolidation Code	Order No.

NO ALLOWABLE WILL BE ASSIGNED TO THIS COMPLETION UNTIL ALL INTERESTS HAVE BEEN CONSOLIDATED OR A NON-STANDARD UNIT HAS BEEN APPROVED BY THE DIVISION



OPERATOR CERTIFICATION

I hereby certify that the information contained herein is true and complete to the best of my knowledge and belief, and that this organization either owns a working interest or undivided mineral interest in the land including the proposed bottom hole location or has a right to drill this well at this location pursuant to a contract with an owner of such a mineral or working interest, or to a voluntary pooling agreement or a compulsory pooling order heretofore entered by the division.

Travis Hahn 3/23/17
Signature Date

Travis Hahn
Printed Name
travis.hahn@eogresources.com
Email Address

SURVEYOR CERTIFICATION

I hereby certify that the well location shown on this plat was plotted from field notes of actual surveys made by me or under my supervision and that the same is true and correct to the best of my belief.

OCT 26 2014
Date Surveyed
Signature of Professional Surveyor
7977

Certificate No. 7977
Basin Surveyor

0' 1000' 2000' 3000' 4000'
SCALE: 1" = 2000'
WO Num.: 30694

Rev 4-27-11