

DISTRICT I  
1625 N. French Dr., Hobbs, NM 88240  
Phone: (575) 393-6161 Fax: (575) 393-0720

DISTRICT II  
811 S. First St., Artesia, NM 88210  
Phone: (505) 334-6178 Fax: (505) 748-9720

DISTRICT III  
1000 Rio Brazos Road, Aztec, NM 87410  
Phone: (505) 334-6178 Fax: (505) 334-6170

DISTRICT IV  
1220 S. St. Francis Dr., Santa Fe, NM 87505  
Phone: (505) 476-3460 Fax: (505) 476-3462

**NM OIL CONSERVATION**  
ARTESIA DISTRICT  
APR 24 2017  
**RECEIVED**

State of New Mexico  
Energy, Minerals & Natural Resources Department  
**OIL CONSERVATION DIVISION**  
1220 South St. Francis Dr.  
Santa Fe, New Mexico 87505

Form C-102  
Revised August 1, 2011  
Submit one copy to appropriate  
District Office

□ AMENDED REPORT

**WELL LOCATION AND ACREAGE DEDICATION PLAT**

API Number <b>30-015-44130</b>	Pool Code <b>96217</b>	Pool Name <b>willow lake; Bone Spring, Southern</b>
Property Code <b>317085</b>	Property Name <b>CATTLE BARON STATE</b>	Well Number <b>1Y</b>
OGRID No. <b>005380</b>	Operator Name <b>XTO ENERGY</b>	Elevation <b>2915'</b>

Surface Location

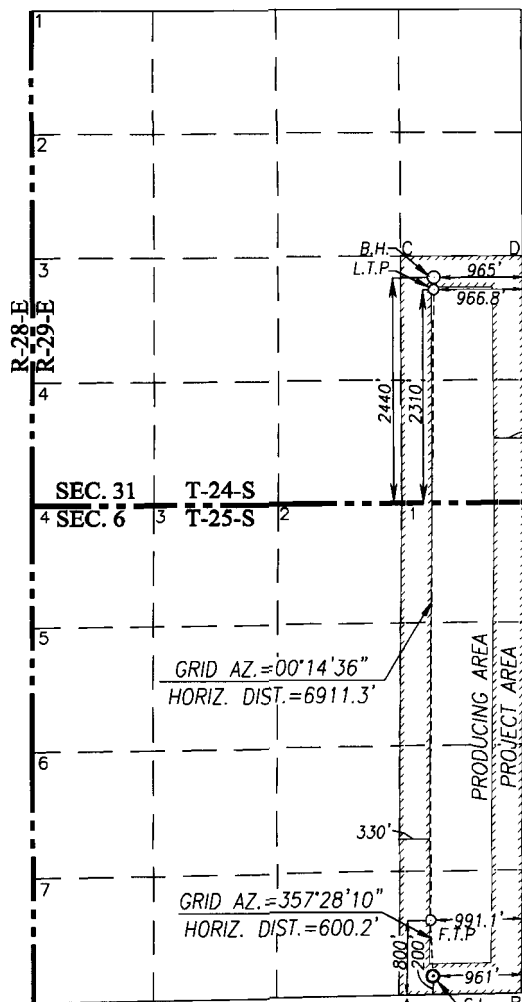
UL or lot No.	Section	Township	Range	Lot Idn	Feet from the	North/South line	Feet from the	East/West line	County
<b>P</b>	<b>6</b>	<b>25-S</b>	<b>29-E</b>		<b>200</b>	<b>SOUTH</b>	<b>961</b>	<b>EAST</b>	<b>EDDY</b>

Bottom Hole Location If Different From Surface

UL or lot No.	Section	Township	Range	Lot Idn	Feet from the	North/South line	Feet from the	East/West line	County
<b>I</b>	<b>31</b>	<b>24-S</b>	<b>29-E</b>		<b>2440</b>	<b>SOUTH</b>	<b>965</b>	<b>EAST</b>	<b>EDDY</b>

Dedicated Acres	Joint or Infill	Consolidation Code	Order No.
<b>239.47</b>			

**NO ALLOWABLE WILL BE ASSIGNED TO THIS COMPLETION UNTIL ALL INTERESTS HAVE BEEN CONSOLIDATED OR A NON-STANDARD UNIT HAS BEEN APPROVED BY THE DIVISION**



SCALE: 1"=2000'

<p>GEODETIC COORDINATES NAD 83 NME BOTTOM HOLE LOCATION Y = 426888.8 N X = 638832.3 E LAT. = 32.173203° N LONG. = 104.018229° W</p> <p>LAST TAKE POINT NAD 83 NME Y = 426758.8 N X = 638831.8 E LAT. = 32.172845° N LONG. = 104.018232° W</p> <p>CORNER COORDINATES TABLE NAD 27 NME A - Y = 419114.6 N, X = 597277.1 E B - Y = 419138.4 N, X = 598604.8 E C - Y = 427057.5 N, X = 597288.3 E D - Y = 427063.5 N, X = 598610.7 E</p> <p>CORNER COORDINATES TABLE NAD 83 NME A - Y = 419172.9 N, X = 638461.4 E B - Y = 419196.7 N, X = 639789.2 E C - Y = 427116.0 N, X = 638472.5 E D - Y = 427122.1 N, X = 639794.9 E</p> <p>FIRST TAKE POINT NAD 83 NME Y = 419979.0 N X = 638803.0 E LAT. = 32.154209° N LONG. = 104.018389° W</p> <p>SURFACE LOCATION NAD 83 NME Y = 419379.5 N X = 638829.5 E LAT. = 32.152606° N LONG. = 104.018309° W</p>	<p>GEODETIC COORDINATES NAD 27 NME BOTTOM HOLE LOCATION Y = 426830.3 N X = 597648.1 E LAT. = 32.173080° N LONG. = 104.017740° W</p> <p>LAST TAKE POINT NAD 27 NME Y = 426700.3 N X = 597647.6 E LAT. = 32.172722° N LONG. = 104.017743° W</p> <p>FIRST TAKE POINT NAD 27 NME Y = 419920.6 N X = 597618.6 E LAT. = 32.154086° N LONG. = 104.017901° W</p> <p>SURFACE LOCATION NAD 27 NME Y = 419321.2 N X = 597645.1 E LAT. = 32.152437° N LONG. = 104.017821° W</p>
---	---

**OPERATOR CERTIFICATION**

I hereby certify that the information herein is true and complete to the best of my knowledge and belief, and that this organization either owns a working interest or unleased mineral interest in the land including the proposed bottom hole location or has a right to drill this well at this location pursuant to a contract with an owner of such mineral or working interest, or to a voluntary pooling agreement or a compulsory pooling order heretofore entered by the division.

*Stephane Rabadue* 4-13-17  
Signature Date

*Stephane Rabadue*  
Printed Name

*Stephane-rabadue@xtcenergy.com*  
E-mail Address

**SURVEYOR CERTIFICATION**

I hereby certify that the well location shown on this plat was plotted from field notes of actual surveys made by me or under my supervision, and that the same is true and correct to the best of my belief.

APRIL 12, 2017  
Date of Survey

*Ronald J. Eidson*  
Signature of Professional Surveyor

**REGISTRATION SURVEYOR**  
NEW MEXICO  
3239

*Ronald J. Eidson* 4/12/2017  
Certificate Number

Gary G. Eidson 12641  
Ronald J. Eidson 3239

ACK REL. W.O. 17130333 JWSC W.O.: 17.11.0333