

District I
1625 N. French Dr., Hobbs, NM 88240
Phone: (575) 393-6161 Fax: (575) 393-0720

District II
811 S. First St., Artesia, NM 88210
Phone: (575) 748-1283 Fax: (575) 748-9720

District III
1000 Rio Brazos Road, Aztec, NM 87410
Phone: (505) 334-6178 Fax: (505) 334-6170

District IV
1220 S. St. Francis Dr., Santa Fe, NM 87505
Phone: (505) 476-3460 Fax: (505) 476-3462

State of New Mexico OIL CONSERVATION
ARTESIA DISTRICT
Energy Minerals and Natural Resources
Oil Conservation Division
1220 South St. Francis Dr.
Santa Fe, NM 87505

Form C-101
Revised July 18, 2013

JUN 09 2017

☐ AMENDED REPORT

RECEIVED

APPLICATION FOR PERMIT TO DRILL, RE-ENTER, DEEPEN, PLUGBACK, OR ADD A ZONE

¹ Operator Name and Address DELAWARE ENERGY, LLC 3001 W. LOOP 250 N. SUITE #C-105-318 MIDLAND TEXAS 78705		² OGRID Number 371195
⁴ Property Code 318045		³ API Number 30-015- 44262
⁵ Property Name GOMEZ SWD		⁶ Well No. 1

⁷ Surface Location

UL - Lot	Section	Township	Range	Lot Idn	Feet from	N/S Line	Feet From	E/W Line	County
O	9	24S	28E		700	SOUTH	1550	EAST	EDDY

⁸ Proposed Bottom Hole Location

UL - Lot	Section	Township	Range	Lot Idn	Feet from	N/S Line	Feet From	E/W Line	County

⁹ Pool Information

Pool Name DEVONIAN SWD	Pool Code 96101
---------------------------	--------------------

Additional Well Information

¹¹ Work Type N	¹² Well Type S	¹³ Cable/Rotary ROTARY	¹⁴ Lease Type P	¹⁵ Ground Level Elevation 3,024'
¹⁶ Multiple N	¹⁷ Proposed Depth 15,000FT	¹⁸ Formation DEVONIAN	¹⁹ Contractor TO BE DETERMINED	²⁰ Spud Date 7/15/2017
Depth to Ground water 30-100'		Distance from nearest fresh water well 4,000FT		Distance to nearest surface water 2,500FT

We will be using a closed-loop system in lieu of lined pits: YES

²¹ Proposed Casing and Cement Program

Type	Hole Size	Casing Size	Casing Weight/ft	Setting Depth	Sacks of Cement	Estimated TOC
SURFACE	26"	20"	106.5	400	1400	0
INTER	17.5"	13.375"	61	2,600	2000	0
INTER	12.25"	9.625"	47	9,500	2200	0
PROD	8.5"	7"	32	13,650	2200	0

Casing/Cement Program: Additional Comments

SWD ORDER: SWD-1660

²² Proposed Blowout Prevention Program

Type	Working Pressure	Test Pressure	Manufacturer
BOP: DOUBLE RAM	5000	5000	CAMERON
ANNULAR	5000	5000	CAMERON

²³ I hereby certify that the information given above is true and complete to the best of my knowledge and belief. I further certify that I have complied with 19.15.14.9 (A) NMAC <input checked="" type="checkbox"/> and/or 19.15.14.9 (B) NMAC <input checked="" type="checkbox"/> if applicable. Signature: Printed name: MIKE MCCURDY	OIL CONSERVATION DIVISION Approved By: Title: <i>Geologist</i> 6-9-17
---	--

Title: ENGINEER		Approved Date:	Expiration Date:
E-mail Address: mmccurdy@delawareenergyllc.com			
Date: 5/23/2017	Phone: 432-312-5251	Conditions of Approval Attached	

DISTRICT I
1625 N. French Dr., Hobbs, NM 88240
Phone (505) 393-8181 Fax: (505) 393-0780

DISTRICT II
811 S. First St., Artesia, NM 88210
Phone (505) 745-1203 Fax: (505) 745-0780

DISTRICT III
1000 Rio Brazos Rd., Aztec, NM 87410
Phone (505) 334-6178 Fax: (505) 334-6170

DISTRICT IV
1220 S. St. Francis Dr., Santa Fe, NM 87505
Phone (505) 476-3460 Fax: (505) 476-3468

State of New Mexico
Energy, Minerals and Natural Resources Department

NM OIL CONSERVATION
ARTESIA DISTRICT
Form C-102
Revised August 1, 2011

OIL CONSERVATION DIVISION

1220 South St. Francis Dr.
Santa Fe, New Mexico 87505

Submit one copy to appropriate
District Office

RECEIVED

WELL LOCATION AND ACREAGE DEDICATION PLAT

☐ AMENDED REPORT

API Number 30-015-44262	Pool Code	Pool Name
Property Code 318045	Property Name GOMEZ SWD	Well Number 1
OGRID No. 371195	Operator Name DELAWARE ENERGY	Elevation 3024'

Surface Location

UL or lot No. 0	Section 9	Township 24 S	Range 28 E	Lot Idn	Feet from the 700	North/South line SOUTH	Feet from the 1550	East/West line EAST	County EDDY
---------------------------	---------------------	-------------------------	----------------------	---------	-----------------------------	----------------------------------	------------------------------	-------------------------------	-----------------------

Bottom Hole Location If Different From Surface

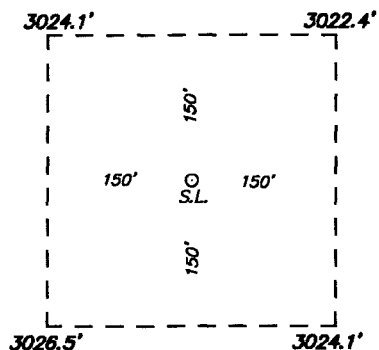
UL or lot No.	Section	Township	Range	Lot Idn	Feet from the	North/South line	Feet from the	East/West line	County
---------------	---------	----------	-------	---------	---------------	------------------	---------------	----------------	--------

Dedicated Acres	Joint or Infill	Consolidation Code	Order No.
-----------------	-----------------	--------------------	-----------

NO ALLOWABLE WILL BE ASSIGNED TO THIS COMPLETION UNTIL ALL INTERESTS HAVE BEEN CONSOLIDATED
OR A NON-STANDARD UNIT HAS BEEN APPROVED BY THE DIVISION

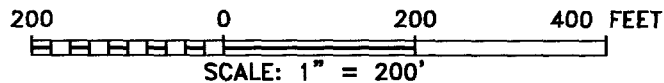
N.: 451054.9 E.: 613167.0 (NAD83)				N.: 451087.7 E.: 618511.2 (NAD83)	OPERATOR CERTIFICATION <i>I hereby certify that the information contained herein is true and complete to the best of my knowledge and belief, and that this organization either owns a working interest or undivided mineral interest in the land including the proposed bottom hole location or has a right to drill this well at this location pursuant to a contract with an owner of such a mineral or working interest, or to a voluntary pooling agreement or a compulsory pooling order heretofore entered by the division.</i> Signature <i>Mike McCurdy</i> Date <i>6/6/07</i> Printed Name <i>Mike McCurdy</i> Email Address <i>mmccurdy@delawarellc.com</i>
					SURVEYOR CERTIFICATION <i>I hereby certify that the well location shown on this plat was plotted from field notes of actual surveys made by me or under my supervision and that the same is true and correct to the best of my belief.</i> Date Surveyed <i>May 1, 2007</i> Signature & Seal of Professional Surveyor <i>[Seal]</i> Certificate No. <i>7977</i> BASIC SURVEYS
					SURFACE LOCATION Lat - N 32.227286° Long - W 104.089043° NMSPC- N 448508.4 E 616877.2 (NAD-83)
					SCALE: 1" = 2000' WQ Num.: 32902

**SECTION 9, TOWNSHIP 24 SOUTH, RANGE 28 EAST, N.M.P.M.,
EDDY COUNTY, NEW MEXICO.**



GOMEZ SWD #1
ELEV. - 3024'
 Lat - N 32.227286°
 Long - W 104.089043°
 NMSPE- N 446506.4
 E 616877.2
 (NAD-83)

LOVING, NM IS ±4 MILES TO THE NORTH OF LOCATION.



Directions to Location:

FROM THE VILLAGE OF MALAGA, GO WEST ON
 COUNTY ROAD 396 (BLACK RIVER) 1.0 MILE TO SITE
 ON NORTH.

basin
surveys
 focused on excellence
 in the oilfield

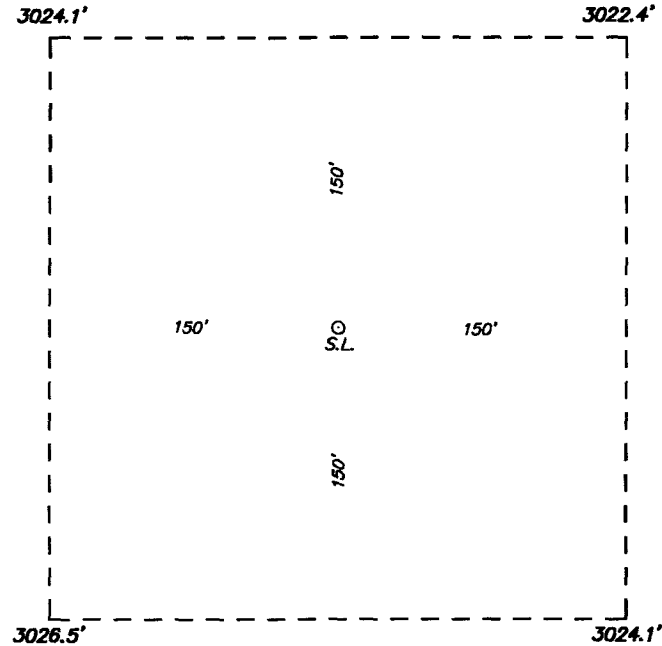
P.O. Box 1786 (575) 393-7316 - Office
 1120 N. West County Rd. (575) 392-2206 - Fax
 Hobbs, New Mexico 88241 basin-surveys.com

DELTARE ENERGY

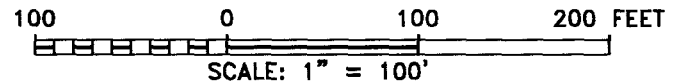
REF: GOMEZ SWD #1 / WELL PAD TOPO

THE GOMEZ SWD #1 LOCATED 700' FROM
 THE SOUTH LINE AND 1550' FROM THE EAST LINE OF
 SECTION 9, TOWNSHIP 24 SOUTH, RANGE 28 EAST.
 N.M.P.M., EDDY COUNTY, NEW MEXICO.

**SECTION 9, TOWNSHIP 24 SOUTH, RANGE 28 EAST, N.M.P.M.,
EDDY COUNTY, NEW MEXICO.**



GOMEZ SWD #1
ELEV. - 3024'
Lat - N 32.227286°
Long - W 104.089043°
NMSPCE- N 448506.4
E 616877.2
(NAD-83)



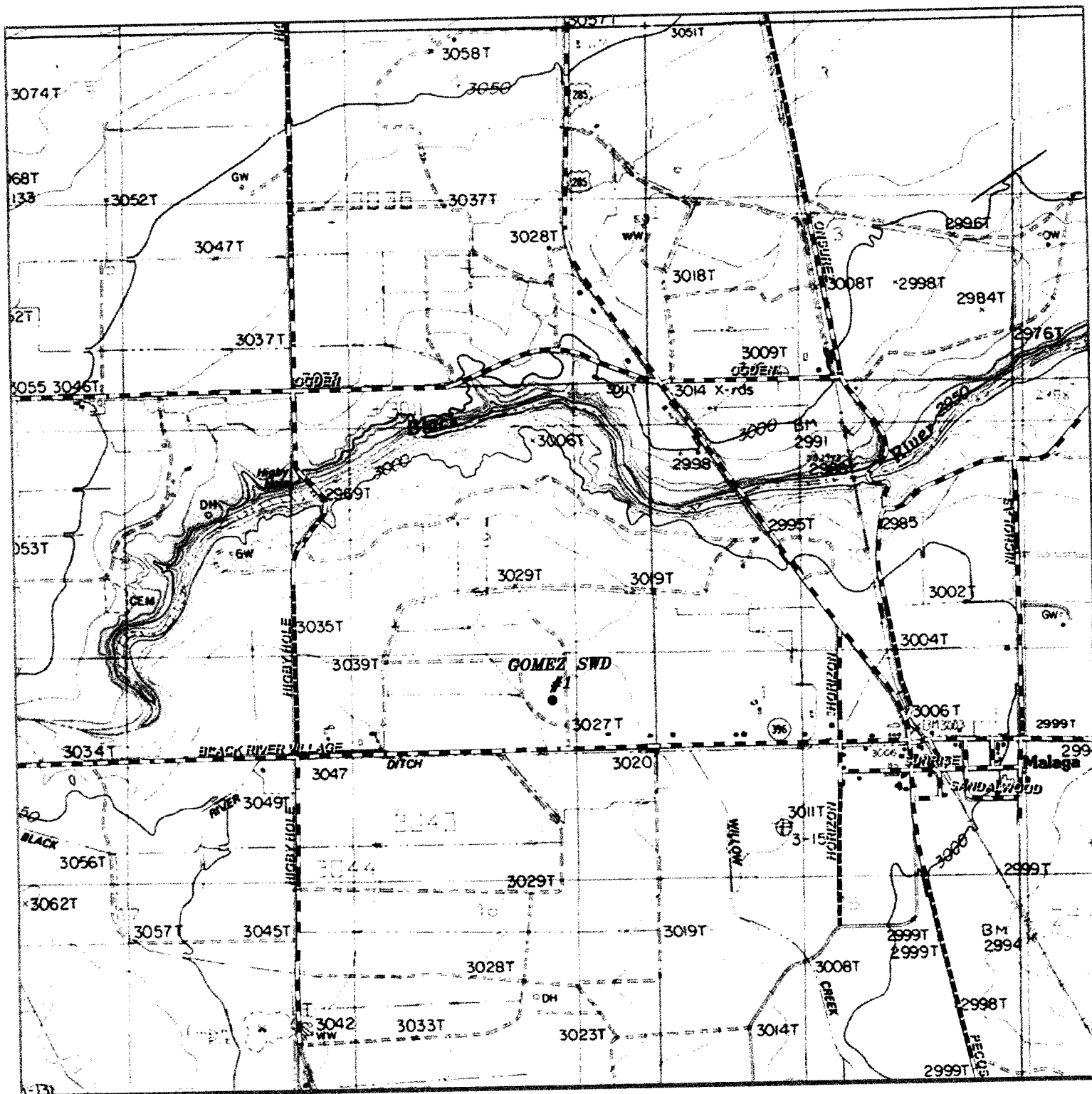
DELWARE ENERGY

REF: GOMEZ SWD #1 / WELL PAD TOPO

THE GOMEZ SWD #1 LOCATED 700' FROM
THE SOUTH LINE AND 1550' FROM THE EAST LINE OF
SECTION 9, TOWNSHIP 24 SOUTH, RANGE 28 EAST.
N.M.P.M., EDDY COUNTY, NEW MEXICO.

basin
surveys
focused on excellence
in the oilfield

P.O. Box 1786 (575) 393-7316 - Office
1120 N. West County Rd. (575) 392-2206 - Fax
Hobbs, New Mexico 88241 basin-surveys.com



GOMEZ SWD #1

Located 700' FSL and 1550' FEL
 Section 9, Township 24 South, Range 28 East,
 N.M.P.M., Eddy County, New Mexico.

basin
surveys

focused on excellence
 in the oilfield

P.O. Box 1786
 1120 N. West County Rd.
 Hobbs, New Mexico 88241
 (575) 393-7316 - Office
 (575) 392-2206 - Fax
 basinsurveys.com

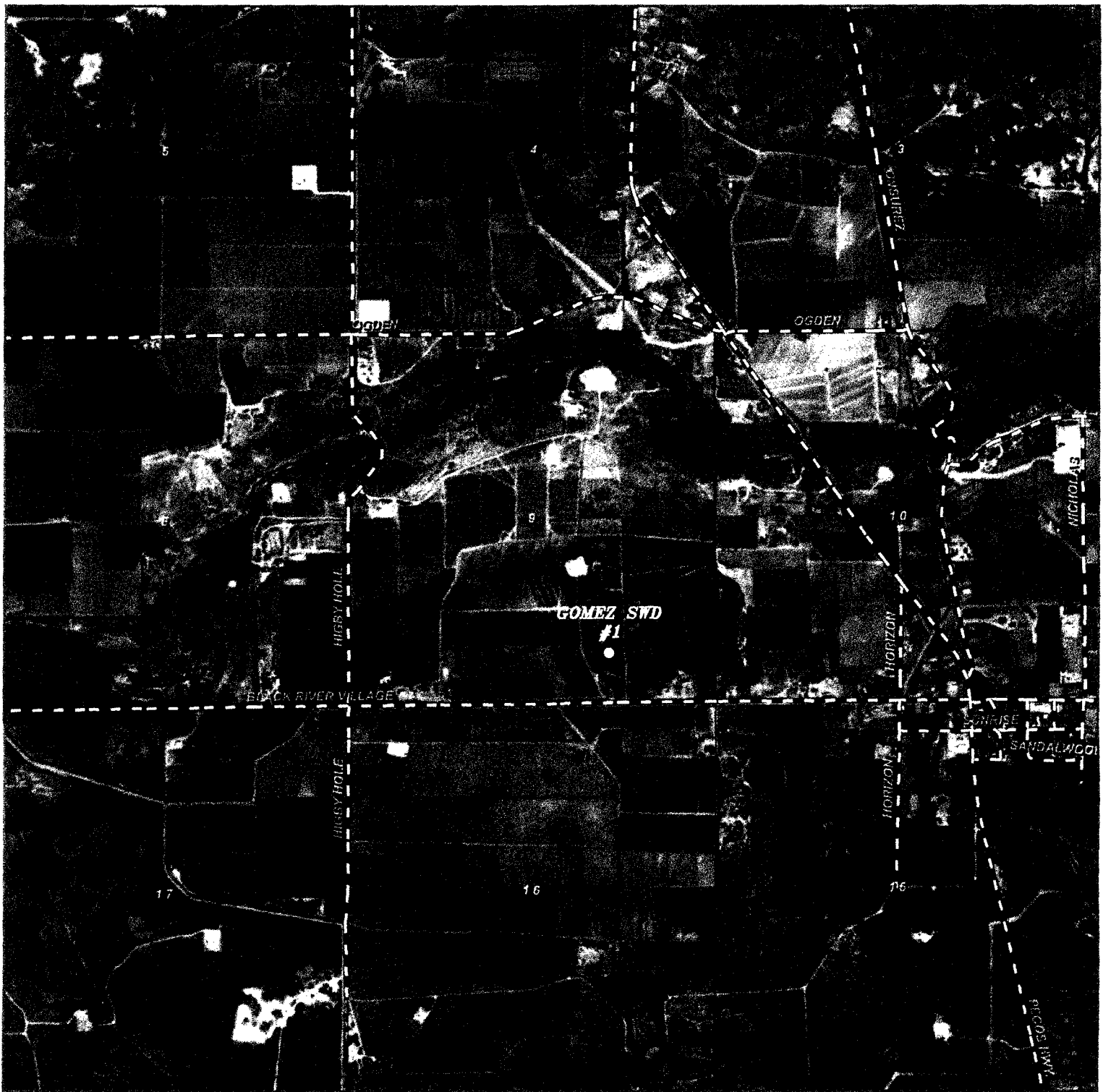
0' 1000' 2000' 3000' 4000'
 SCALE: 1" = 2000'

W.O. Number: KJG 32902

Survey Date: 05-01-2017

YELLOW TINT - USA LAND
 BLUE TINT - STATE LAND
 NATURAL COLOR - FEE LAND

DELMARE
ENERGY



GOMEZ SWD #1

Located 700' FSL and 1550' FEL
 Section 9, Township 24 South, Range 28 East,
 N.M.P.M., Eddy County, New Mexico.

basin
surveys

focused on excellence
 in the oilfield

P.O. Box 1786
 1120 N. West County Rd.
 Hobbs, New Mexico 88241
 (575) 393-7316 - Office
 (575) 392-2206 - Fax
 basinsurveys.com

0' 1000' 2000' 3000' 4000'
 SCALE: 1" = 2000'

W.O. Number: KJG 32902

Survey Date: 05-01-2017

YELLOW TINT - USA LAND
 BLUE TINT - STATE LAND
 NATURAL COLOR - FEE LAND



DELMARE
ENERGY

