

District I

1625 N. French Dr., Hobbs, NM 88240
Phone: (575) 393-6161 Fax: (575) 393-0720

District II

811 S. First St., Artesia, NM 88210
Phone: (575) 748-1283 Fax: (575) 748-9720

District III

1000 Rio Brazos Road, Aztec, NM 87410
Phone: (505) 334-6178 Fax: (505) 334-6170

District IV

1220 S. St. Francis Dr., Santa Fe, NM 87505
Phone: (505) 476-3460 Fax: (505) 476-3462

NM OIL CONSERVATION

ARTESIA DISTRICT

Energy, Minerals & Natural Resources Department

JUL 14 2017

OIL CONSERVATION DIVISION

RECEIVED

1220 South St. Francis Dr.

Santa Fe, NM 87505

Form C-102

Revised August 1, 2011

Submit one copy to appropriate

District Office

☐ AMENDED REPORT

WELL LOCATION AND ACREAGE DEDICATION PLAT

¹ API Number 30-005-64295	² Pool Code 52770	³ Pool Name Round Tank; San Andries
⁴ Property Code 318348	⁵ Property Name KLONDIKE STATE COM	
⁷ OGRID No. 13837	⁸ Operator Name MACK ENERGY CORPORATION	
		⁶ Well Number 1H
		⁹ Elevation 3579.5

¹⁰ Surface Location

UL or lot no.	Section	Township	Range	Lot Idn	Feet from the	North/South line	Feet from the	East/West line	County
O	23	15 S	28 E		700	SOUTH	2285	EAST	CHAVES

¹¹ Bottom Hole Location If Different From Surface

UL or lot no.	Section	Township	Range	Lot Idn	Feet from the	North/South line	Feet from the	East/West line	County
G	35	15 S	28 E		2370	NORTH	2285	EAST	CHAVES

¹² Dedicated Acres	¹³ Joint or Infill	¹⁴ Consolidation Code	¹⁵ Order No.
280			

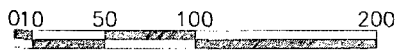
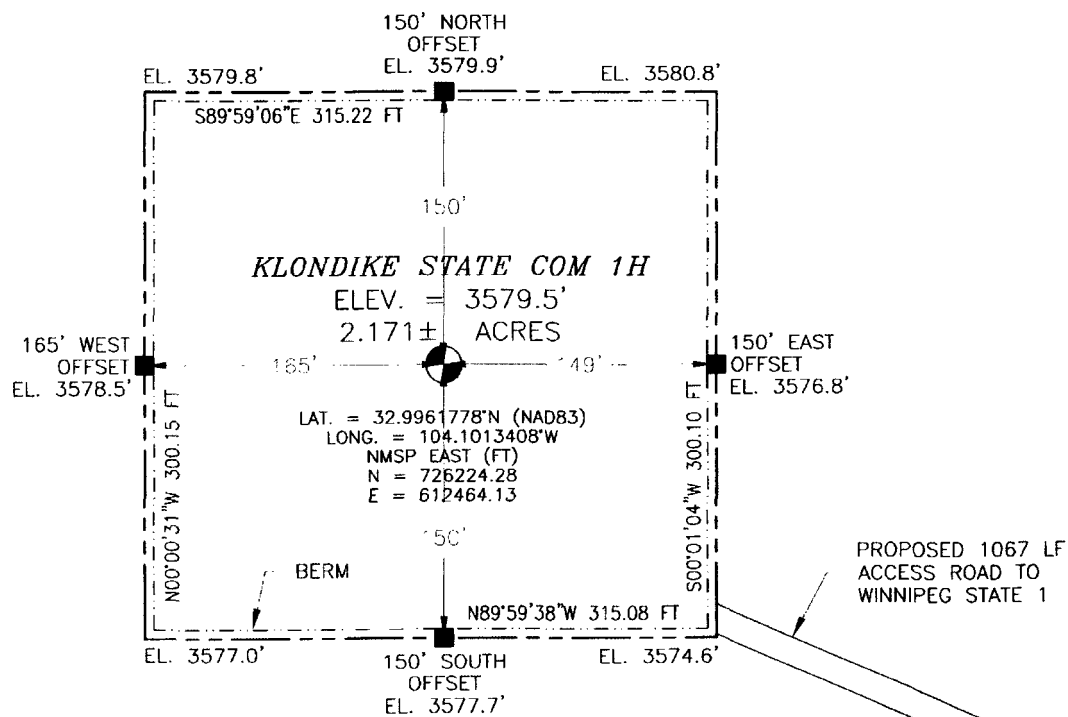
No allowable will be assigned to this completion until all interests have been consolidated or a non-standard unit has been approved by the division.

	<p>¹⁷ OPERATOR CERTIFICATION</p> <p>I hereby certify that the information contained herein is true and complete to the best of my knowledge and belief, and that this organization either owns a working interest or unleased mineral interest in the land including the proposed bottom hole location or has a right to drill this well at this location pursuant to a contract with an owner of such a mineral or working interest, or to a voluntary pooling agreement or a compulsory pooling order heretofore entered by the division.</p> <p><i>Jerry W. Sherrell</i> 7/14/2017 Signature Date</p> <p><i>Jerry W. Sherrell</i> Printed Name</p> <p><i>jerryse@mec.com</i> Email Address</p> <p>¹⁸ SURVEYOR CERTIFICATION</p> <p>I hereby certify that the well location shown on this plat was plotted from field notes of actual surveys made by me or under my supervision, and that the same is true and correct to the best of my belief.</p> <p>MAY 18, 2017 Date of Survey</p> <p><i>[Signature]</i> Signature and Seal of Professional Surveyor</p> <p>Certificate Number FJLIMON E. JARAMILLO, PLS 12797</p> <p>SURVEY NO. 5265</p>
--	---

AsP 7-17-17

SECTION 23, TOWNSHIP 15 SOUTH, RANGE 28 EAST, N.M.P.M.
CHAVES COUNTY, STATE OF NEW MEXICO
SITE MAP

NOTE: LATITUDE AND LONGITUDE COORDINATES ARE SHOWN USING THE NORTH AMERICAN DATUM OF 1983 (NAD83). LISTED NEW MEXICO STATE PLANE EAST COORDINATES ARE GRID (NAD83). BASIS OF BEARING AND DISTANCES USED ARE NEW MEXICO STATE PLANE EAST COORDINATES MODIFIED TO THE SURFACE



SCALE 1" = 100'
DIRECTIONS TO LOCATION

FROM THE INTERSECTION OF US HIGHWAY 82 AND CR 209 (TURKEY TRACK) GO NORTH ON CR 209 FOR APPROX. 5.0 MILES TO END OF CR MAINTENANCE. CONTINUE NORTH ON TURKEY TRACK ROAD FOR APPROX. 7.7 MILES TO THE QUEBEC STATE 1 LOCATION. GO NORTH APPROX. 0.5 OF A MILE TO THE SOUTHWEST PAD CORNER OF WINNIPEG STATE 1, THEN GO NORTHWEST APPROX. 1067' TO THE SOUTHEAST PAD CORNER FOR THIS LOCATION.

MACK ENERGY CORPORATION
KLONDIKE STATE COM 1H
LOCATED 700 FT. FROM THE SOUTH LINE
AND 2285 FT. FROM THE EAST LINE OF
SECTION 23, TOWNSHIP 15 SOUTH,
RANGE 28 EAST, N.M.P.M.
CHAVES COUNTY, STATE OF NEW MEXICO

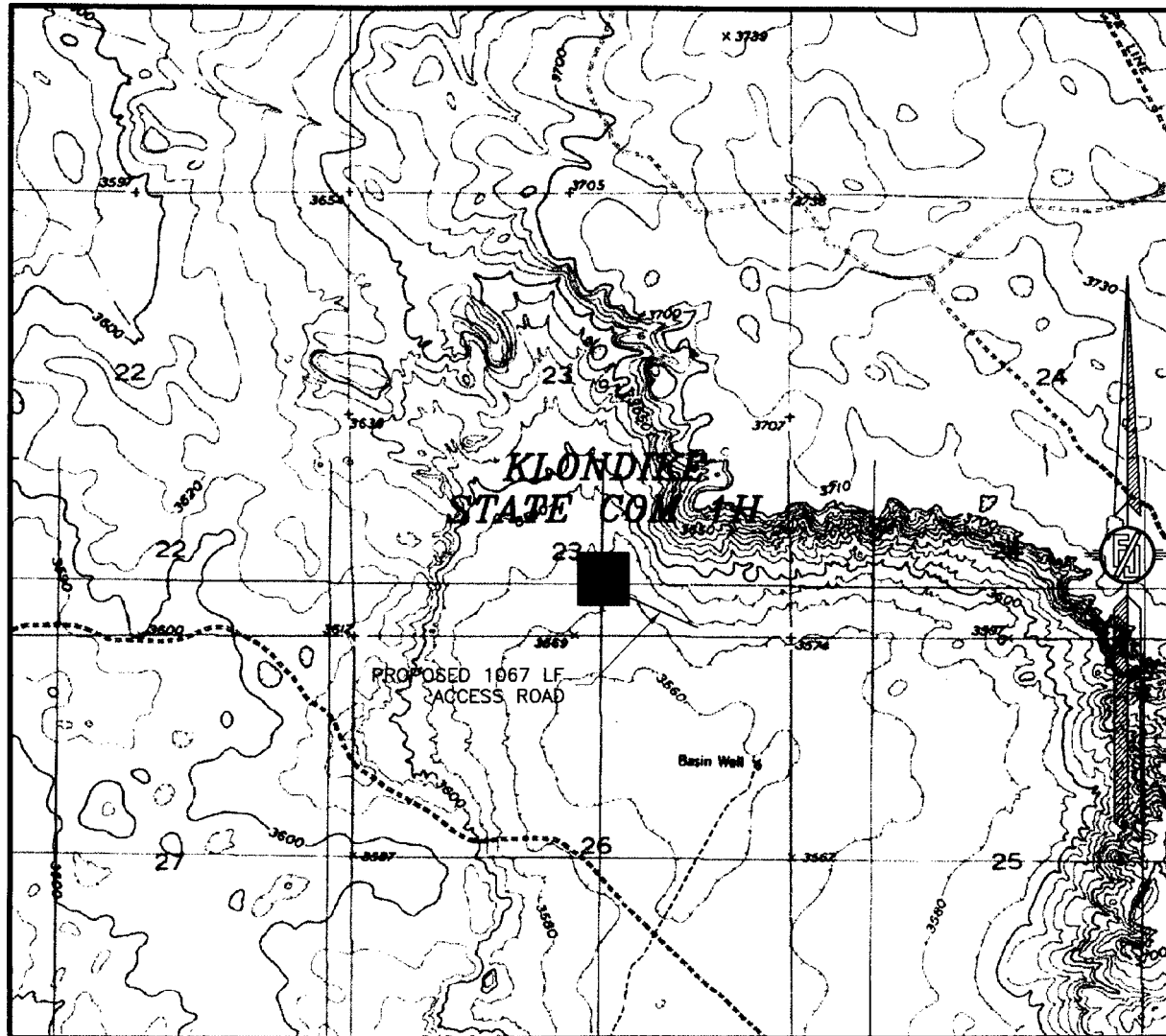
MAY 18, 2017

SURVEY NO. 5265

MADRON SURVEYING, INC. 301 SOUTH CANAL
(505) 234-3241

CARLSBAD, NEW MEXICO

SECTION 23, TOWNSHIP 15 SOUTH, RANGE 28 EAST, N.M.P.M.
CHAVES COUNTY, STATE OF NEW MEXICO
LOCATION VERIFICATION MAP



USGS QUAD MAP:
BASIN WELL

NOT TO SCALE

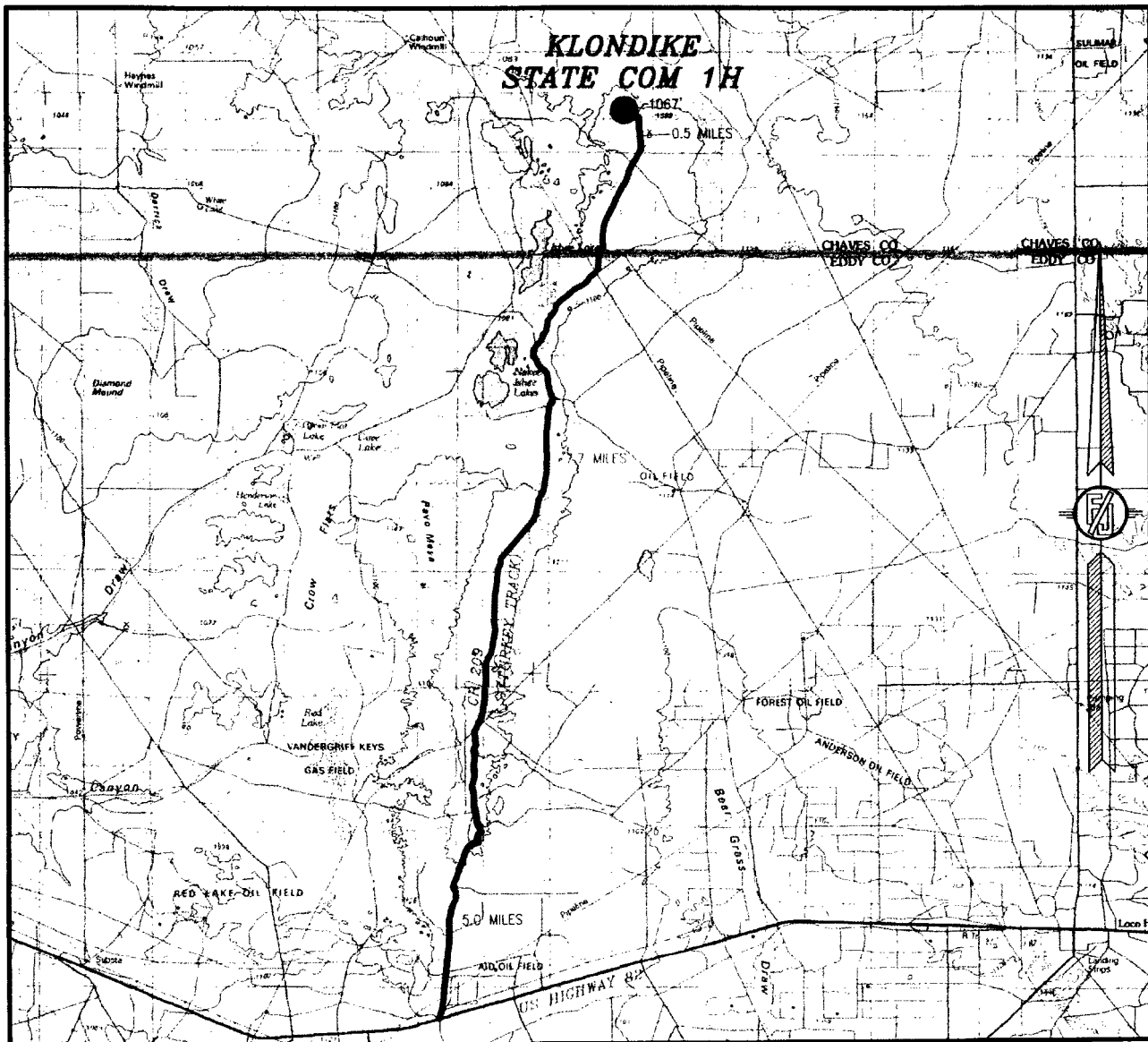
MACK ENERGY CORPORATION
KLONDIKE STATE COM 1H
LOCATED 700 FT. FROM THE SOUTH LINE
AND 2285 FT. FROM THE EAST LINE OF
SECTION 23, TOWNSHIP 15 SOUTH,
RANGE 28 EAST, N.M.P.M.
CHAVES COUNTY, STATE OF NEW MEXICO

MAY 18, 2017

SURVEY NO. 5265

MADRON SURVEYING, INC. 301 SOUTH CANAL CARLSBAD, NEW MEXICO
(575) 234-3341

SECTION 23, TOWNSHIP 15 SOUTH, RANGE 28 EAST, N.M.P.M.
CHAVES COUNTY, STATE OF NEW MEXICO
VICINITY MAP



DISTANCES IN MILES

NOT TO SCALE

DIRECTIONS TO LOCATION

FROM THE INTERSECTION OF US HIGHWAY 82 AND CR 209 (TURKEY TRACK) GO NORTH ON CR 209 FOR APPROX. 5.0 MILES TO END OF CR MAINTENANCE. CONTINUE NORTH ON TURKEY TRACK ROAD FOR APPROX. 7.7 MILES TO THE QUEBEC STATE 1 LOCATION. GO NORTH APPROX. 0.5 OF A MILE TO THE SOUTHWEST PAD CORNER OF WINNIPEG STATE 1, THEN GO NORTHWEST APPROX. 1067' TO THE SOUTHEAST PAD CORNER FOR THIS LOCATION.

MACK ENERGY CORPORATION
KLONDIKE STATE COM 1H
LOCATED 700 FT. FROM THE SOUTH LINE
AND 2285 FT. FROM THE EAST LINE OF
SECTION 23, TOWNSHIP 15 SOUTH,
RANGE 28 EAST, N.M.P.M.
CHAVES COUNTY, STATE OF NEW MEXICO

MAY 18, 2017

SURVEY NO. 5265

MADRON SURVEYING, INC. 301 SOUTH CANAL

(575) 754-5341

CARLSBAD, NEW MEXICO

SECTION 23, TOWNSHIP 15 SOUTH, RANGE 28 EAST, N.M.P.M.
CHAVES COUNTY, STATE OF NEW MEXICO
AERIAL PHOTO



NOT TO SCALE
AERIAL PHOTO:
GOOGLE EARTH
FEBRUARY 2017

MACK ENERGY CORPORATION
KLONDIKE STATE COM 1H
LOCATED 700 FT. FROM THE SOUTH LINE
AND 2285 FT. FROM THE EAST LINE OF
SECTION 23, TOWNSHIP 15 SOUTH,
RANGE 28 EAST, N.M.P.M.
CHAVES COUNTY, STATE OF NEW MEXICO

MAY 18, 2017

SURVEY NO. 5265

MADRON SURVEYING, INC. 30' SOUTH CANAL (575) 234-3341 CARLSBAD, NEW MEXICO

MACK ENERGY CORPORATION
KLONDIKE STATE COM 1H
LOCATED 700 FT. FROM THE SOUTH LINE
AND 2285 FT. FROM THE EAST LINE OF
SECTION 23, TOWNSHIP 15 SOUTH,
RANGE 28 EAST, N.M.P.M.
CHAVES COUNTY, STATE OF NEW MEXICO

SURVEY NO. 5265

MADRON SURVEYING, INC. 301 SOUTH CANAL CARLSBAD, NEW MEXICO
(505) 234-3341

301 SOUTH CANAL
(5/5) 234-3341