

DISTRICT I  
1625 N. French Dr., Hobbs, NM 88240  
Phone (575) 393-6161 Fax (575) 393-0720

DISTRICT II  
811 S. First St., Artesia, NM 88210  
Phone (575) 748-1283 Fax (575) 748-9720

DISTRICT III  
1000 Rio Brazos Road, Aztec, NM 87410  
Phone (505) 334-6178 Fax (505) 334-6170

DISTRICT IV  
1220 S. St. Francis Dr., Santa Fe, NM 87505  
Phone (505) 476-3460 Fax (505) 476-3462

State of New Mexico  
Energy, Minerals & Natural Resources Department  
OIL CONSERVATION DIVISION  
1220 South St. Francis Dr.  
Santa Fe, New Mexico 87505

NM OIL CONSERVATION Form C-102  
ARTESIA DISTRICT Revised August 1, 2011  
Submit one copy to appropriate District Office

JUL 24 2017

RECEIVED ☐ AMENDED REPORT

WELL LOCATION AND ACREAGE DEDICATION PLAT

API Number 30-015-43472	Pool Code 98106	Pool Name NC-05-G-075262950, Upper Wolfcamp
Property Code 315688	Property Name ROSS DRAW 25	Well Number 2H
OGRID No. 005380	Operator Name XTO ENERGY	Elevation 2927'

Surface Location

UL or lot No.	Section	Township	Range	Lot Idn	Feet from the	North/South line	Feet from the	East/West line	County
D	25	26-S	29-E		170	NORTH	380	WEST	EDDY

As-Drilled Bottom Hole Location If Different From Surface

UL or lot No.	Section	Township	Range	Lot Idn	Feet from the	North/South line	Feet from the	East/West line	County
1	36	26-S	29-E		236.8	SOUTH	440.6	WEST	EDDY
Dedicated Acres	Joint or Infill	Consolidation Code	Order No.						

NO ALLOWABLE WILL BE ASSIGNED TO THIS COMPLETION UNTIL ALL INTERESTS HAVE BEEN CONSOLIDATED OR A NON-STANDARD UNIT HAS BEEN APPROVED BY THE DIVISION

SCALE: 1"=2000'

GEODETIC COORDINATES  
NAD 27 NME  
SURFACE LOCATION  
Y=370919.9 N  
X=620674.7 E  
LAT.=32.019175° N  
LONG.=103.943973° W

GEODETIC COORDINATES  
NAD 83 NME  
SURFACE LOCATION  
Y=370977.3 N  
X=661860.7 E  
LAT.=32.019300° N  
LONG.=103.944454° W

FIRST TAKE POINT  
Y=370157.8 N  
X=620635.4 E  
LAT.=32.017081° N  
LONG.=103.944109° W

FIRST TAKE POINT  
Y=370215.2 N  
X=661821.4 E  
LAT.=32.017206° N  
LONG.=103.944589° W

CORNER COORDINATES TABLE

NAD 27 NME  
A - Y=371066.8 N, X=620302.2 E  
B - Y=371147.1 N, X=621575.8 E  
C - Y=365747.2 N, X=620011.1 E  
D - Y=365830.5 N, X=621363.3 E  
E - Y=363935.3 N, X=619647.7 E  
F - Y=363940.8 N, X=621243.2 E

CORNER COORDINATES TABLE

NAD 83 NME  
A - Y=371124.2 N, X=661488.2 E  
B - Y=371204.5 N, X=662761.8 E  
C - Y=365804.5 N, X=661197.2 E  
D - Y=365887.8 N, X=662549.4 E  
E - Y=363992.5 N, X=661033.8 E  
F - Y=363998.0 N, X=662429.4 E

GEODETIC COORDINATES  
NAD 27 NME  
LAST TAKE POINT  
Y=364363.5 N  
X=620311.1 E  
LAT.=32.001155° N  
LONG.=103.945223° W

GEODETIC COORDINATES  
NAD 83 NME  
LAST TAKE POINT  
Y=364420.8 N  
X=661497.2 E  
LAT.=32.001281° N  
LONG.=103.945702° W

AS-DRILLED  
BOTTOM HOLE LOCATION  
Y=364173.9 N  
X=620311.4 E  
LAT.=32.000634° N  
LONG.=103.945224° W

AS-DRILLED  
BOTTOM HOLE LOCATION  
Y=364231.1 N  
X=661497.6 E  
LAT.=32.000759° N  
LONG.=103.945703° W

OPERATOR CERTIFICATION

I hereby certify that the information herein is true and complete to the best of my knowledge and belief, and that this organization either owns a working interest or unleased mineral interest in the land including the proposed bottom hole location or has a right to drill this well at this location pursuant to a contract with an owner of such mineral or working interest, or to a voluntary pooling agreement or a compulsory pooling order heretofore entered by the division.

Signature: Patricia Donald  
Date:

Printed Name: Patricia Donald

E-mail Address: Patricia.Donald@xtrmg.com

SURVEYOR CERTIFICATION

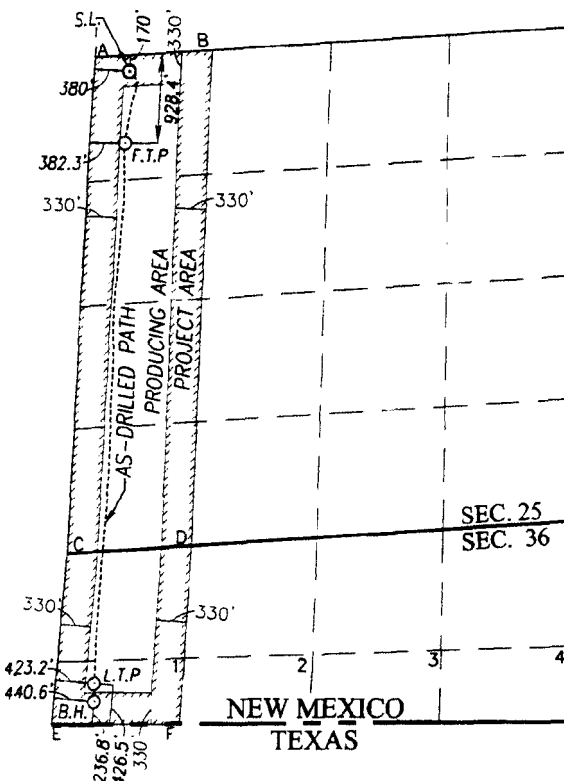
I hereby certify that the well location shown on this plat was plotted from field notes of actual surveys made by me or under my supervision, and that the same is true and correct to the best of my belief.

MAY 6, 2014

Date of Survey  
Signature & Seal of Professional Surveyor:

Signature: Ronald J. Eidson  
Certificate Number: 12641  
Ronald J. Eidson 3239

ACK REL W.O. 16130461 JWSC W.O. 16.13.0988



NOTE: AS-DRILLED BOTTOM HOLE PLOTTED FROM DATA FURNISHED BY XTO ENERGY