

NM OIL CONSERVATION ARTESIA DISTRICT

District I
1625 N. French Dr., Hobbs, NM 88240
Phone: (575) 393-6161 Fax: (575) 393-0720
District II
811 S. First St., Artesia, NM 88210
Phone: (575) 748-1283 Fax: (575) 748-9720
District III
1000 Rio Brazos Road, Aztec, NM 87410
Phone: (505) 334-6178 Fax: (505) 334-6170
District IV
1220 S. St. Francis Dr., Santa Fe, NM 87505
Phone: (505) 476-3460 Fax: (505) 476-3462

State of New Mexico JUL 28 2017
Energy, Minerals & Natural Resources
Department
OIL CONSERVATION DIVISION
1220 South St. Francis Dr.
Santa Fe, NM 87505

FORM C-102
Revised August 1, 2011
Submit one copy to appropriate
District Office

☐ AMENDED REPORT

WELL LOCATION AND ACREAGE DEDICATION PLAT

¹ API Number 30-015-43842	² Pool Code 98220	³ Pool Name PURPLE SAGE; WOLFCAMP (GAS)
⁴ Property Code 315131	⁵ Property Name B BANKER 33-23S-28E RB	⁶ Well Number #206H
⁷ OGRID No. 228937	⁸ Operator Name MATADOR PRODUCTION COMPANY	⁹ Elevation 3060'

¹⁰Surface Location

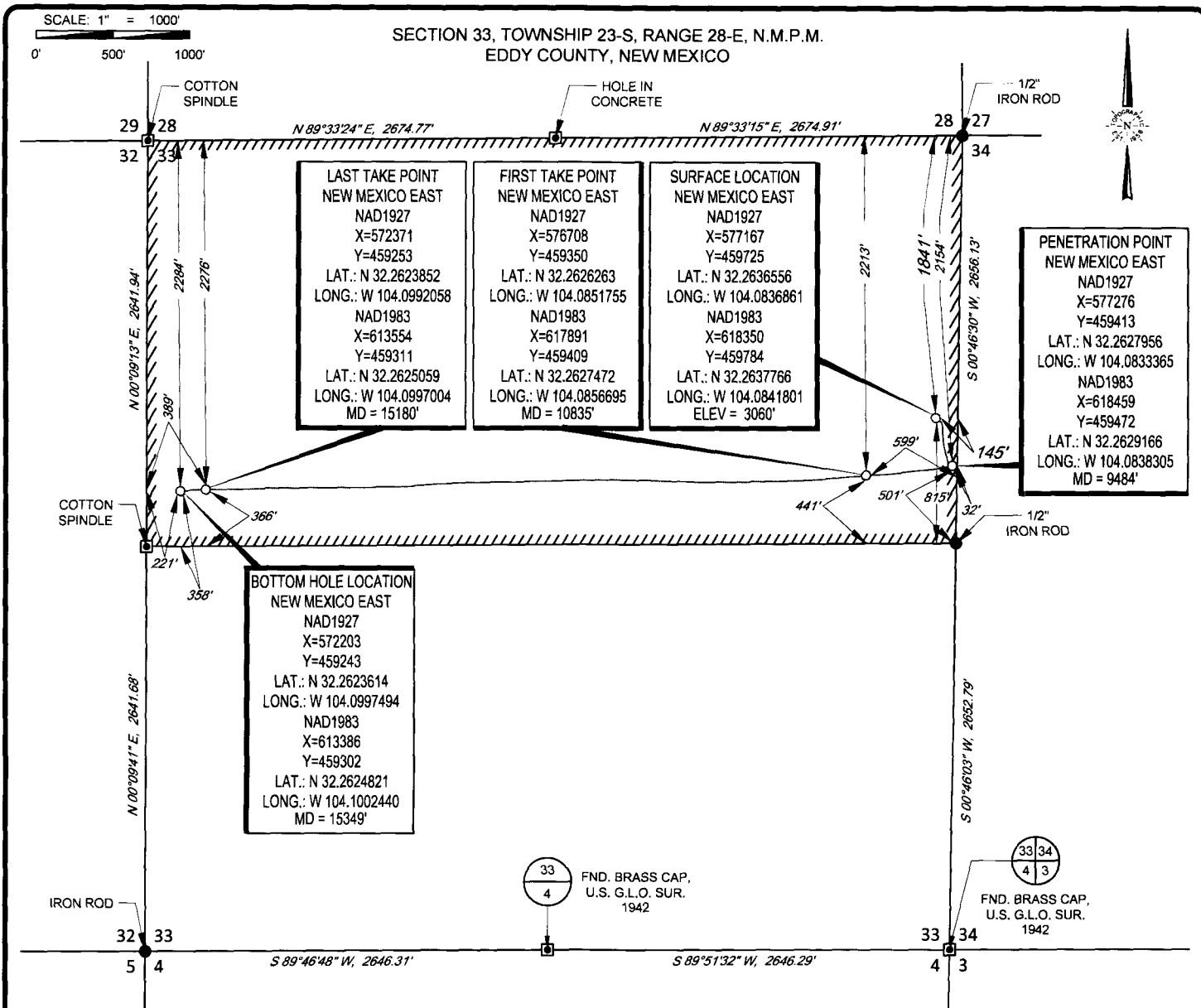
UL or lot no.	Section	Township	Range	Lot Idn	Feet from the	North/South line	Feet from the	East/West line	County
H	33	23-S	28-E	-	1841'	NORTH	145'	EAST	EDDY

UL or lot no.	Section	Township	Range	Lot Idn	Feet from the	North/South line	Feet from the	East/West line	County
E	33	23-S	28-E	-	2284'	NORTH	221'	WEST	EDDY

¹² Dedicated Acres 320	¹³ Joint or Infill	¹⁴ Consolidation Code	¹⁵ Order No.
--------------------------------------	-------------------------------	----------------------------------	-------------------------

No allowable will be assigned to this completion until all interests have been consolidated or a non-standard unit has been approved by the division.

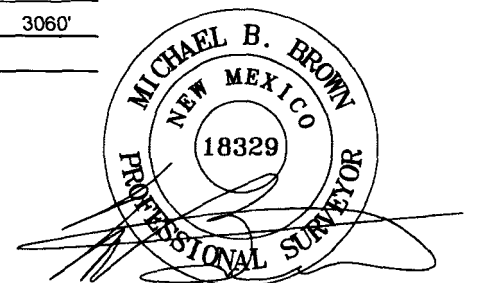
<p>LAST TAKE POINT NEW MEXICO EAST NAD1927 X=572371 Y=459253 LAT.: N 32.2623852 LONG.: W 104.0992058 NAD1983 X=613554 Y=459311 LAT.: N 32.2625059 LONG.: W 104.0997004 MD = 15180'</p>	<p>SURFACE LOCATION NEW MEXICO EAST NAD1927 X=577167 Y=459725 LAT.: N 32.2636556 LONG.: W 104.0836861 NAD1983 X=618350 Y=459784 LAT.: N 32.2637766 LONG.: W 104.0841801 ELEV = 3060'</p>	<p>¹⁷OPERATOR CERTIFICATION I hereby certify that the information contained herein is true and complete to the best of my knowledge and belief, and that this organization either owns a working interest or unleased mineral interest in the land including the proposed bottom hole location or has a right to drill this well at this location pursuant to a contract with an owner of such a mineral or working interest, or to a voluntary pooling agreement or a compulsory pooling order heretofore entered by the division.</p> <p><i>Trey Goodwin</i> 7/27/2017 Signature Date</p> <p>Trey Goodwin Printed Name</p> <p>TGoodwin@matadorresources.com E-mail Address</p>
<p>BOTTOM HOLE LOCATION NEW MEXICO EAST NAD1927 X=572203 Y=459243 LAT.: N 32.2623614 LONG.: W 104.0997494 NAD1983 X=613386 Y=459302 LAT.: N 32.2624821 LONG.: W 104.1002440 MD = 15349'</p>	<p>FIRST TAKE POINT NEW MEXICO EAST NAD1927 X=576708 Y=459350 LAT.: N 32.2626263 LONG.: W 104.0851755 NAD1983 X=617891 Y=459409 LAT.: N 32.2627472 LONG.: W 104.0856695 MD = 10835'</p>	<p>¹⁸SURVEYOR CERTIFICATION I hereby certify that the well location shown on this plat was plotted from field notes of actual surveys made by me or under my supervision, and that the same is true to the best of my belief.</p> <p>03/15/2017 Date of Survey MICHAEL BROWN Signature and Printed Name NEW MEXICO 18329 PROFESSIONAL SURVEYOR</p> <p>Certificate Number</p>



LEASE NAME & WELL NO.: B BANKER 33-23S-28E RB #206H
 SECTION 33 TWP 23-S RGE 28-E SURVEY N.M.P.M.
 COUNTY EDDY STATE NM ELEVATION 3060'
 DESCRIPTION 1841' FNL & 145' FEL



TOPOGRAPHIC
LOYALTY INNOVATION LEGACY
1400 EVERMAN PARKWAY, Ste. 197 • FT. WORTH, TEXAS 76140
TELEPHONE: (817) 744-7512 • FAX: (817) 744-7548
2903 NORTH BIG SPRING • MIDLAND, TEXAS 79705
TELEPHONE: (432) 682-1653 OR (800) 767-1653 • FAX: (432) 682-1743
WWW.TOPOGRAPHIC.COM



Michael Blake Brown, P.S. No. 18329
JULY 27, 2017

<p>B BANKER 33-23S-28E RB #206H AS-DRILLED</p> <p>DATE: 07/26/17</p> <p>FILE: AD_B_BANKER_33-23S-28E_RB_206H</p> <p>DRAWN BY: MML</p> <p>SHEET: 1 OF 1</p>	<p>REVISION:</p>	<p>NOTES:</p> <ol style="list-style-type: none"> 1. ORIGINAL DOCUMENT SIZE: 8.5" X 11" 2. ALL BEARINGS, DISTANCES, AND COORDINATE VALUES CONTAINED HEREIN ARE GRID BASED UPON THE NEW MEXICO STATE PLANE COORDINATE SYSTEM, EAST ZONE, U.S. SURVEY FEET, NORTH AMERICAN DATUM 1983. 3. THIS WELL LOCATION SHOWN HEREON HAS BEEN SURVEYED ON THE GROUND UNDER MY SUPERVISION AND PREPARED ACCORDING TO THE EVIDENCE FOUND AT THE TIME OF SURVEY, AND DATA PROVIDED BY MATADOR PRODUCTION COMPANY. THIS CERTIFICATION IS MADE AND LIMITED TO THOSE PERSONS OR ENTITIES SHOWN ON THE FACE OF THIS PLAT AND IS NON-TRANSFERABLE. THIS SURVEY IS CERTIFIED FOR THIS TRANSACTION ONLY.
---	------------------	---