

**NM OIL CONSERVATION  
ARTESIA DISTRICT**

Form C-101  
Revised July 18, 2013

**District I**  
1625 N. French Dr., Hobbs, NM 88240  
Phone: (575) 393-6161 Fax: (575) 393-0720  
**District II**  
811 S. First St. Artesia, NM 88210  
Phone: (575) 748-1283 Fax: (575) 748-9720  
**District III**  
1000 Rio Brazos Rd., Aztec, NM 87410  
Phone: (505) 334-6178 Fax (505) 334-6170  
**District IV**  
1220 S. St. Francis Dr., Santa Fe, NM 87505  
Phone: (505) 476-3460 Fax (505) 476-3462

**State of New Mexico**  
**Energy, Minerals & Natural Resources**  
**Oil Conservation Division**  
**1220 S. St. Francis Dr.**  
**Santa Fe, NM 87505**

**JUL 28 2017**

**RECEIVED**

☐ AMENDED REPORT

**APPLICATION FOR PERMIT TO DRILL, RE-ENTER, DEEPEN, PLUGBACK, OR ADD A ZONE**

<sup>1</sup> Operator Name and Address <b>XTO ENERGY INC</b> <b>500 W. ILLINOIS, STE. 100, MIDLAND, TX 79701</b>		<sup>2</sup> OGRID Number <b>005380</b>
<sup>4</sup> Property Code <b>318423</b>		<sup>3</sup> API Number <b>30-015-44342</b>
<sup>5</sup> Property Name <b>REUMDA NORTH 31 STATE</b>		<sup>6</sup> Well No. <b>703H</b>

**<sup>7</sup> Surface Location**

UL- lot	Section	Township	Range	Lot.Idn	Feet from	N/S Line	Feet from	E/W Line	County
<b>K</b>	<b>31</b>	<b>23S</b>	<b>30E</b>		<b>2310</b>	<b>SOUTH</b>	<b>1950</b>	<b>WEST</b>	<b>EDDY</b>

**<sup>8</sup> Proposed Bottom Hole Location**

UL- lot	Section	Township	Range	Lot.Idn	Feet from	N/S Line	Feet from	E/W Line	County
<b>C</b>	<b>19</b>	<b>23S</b>	<b>30E</b>		<b>200</b>	<b>NORTH</b>	<b>1677</b>	<b>WEST</b>	<b>EDDY</b>

**<sup>9</sup> Pool Information**

Pool Name	Pool Code
<b>NASH DRAW; DELAWARE/BS (AVALON SAND)</b>	<b>47545</b>

**Additional Well Information**

<sup>11</sup> Work Type <b>NEW WELL</b>	<sup>12</sup> Well Type <b>OIL</b>	<sup>13</sup> Cable/Rotary	<sup>14</sup> Lease Type <b>STATE</b>	<sup>15</sup> Ground Level Elevation <b>3208'</b>
<sup>16</sup> Multiple <b>N</b>	<sup>17</sup> Proposed Depth <b>23,130'</b>	<sup>18</sup> Formation <b>BONE SPRING</b>	<sup>19</sup> Contractor	<sup>20</sup> Spud Date
Depth to Groundwater		Distance from nearest fresh water well		Distance to nearest surface water

☒ We will be using a closed-loop system in lieu of lined pits

**<sup>21</sup> Proposed Casing and Cement Program**

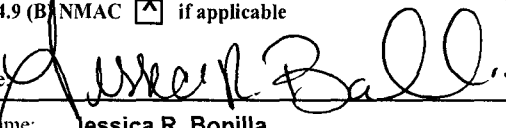
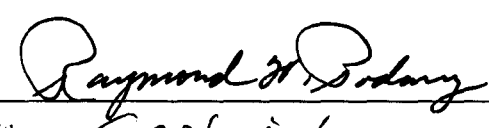
Type	Hole Size	Casing Size	Casing weight/ft	Setting Depth	Sacks of Cement	Estimated TOC
<b>SURF</b>	<b>17.5</b>	<b>13.375</b>	<b>54.5</b>	<b>550</b>	<b>475</b>	<b>0</b>
<b>INT1</b>	<b>12.25</b>	<b>9.625</b>	<b>36</b>	<b>3450</b>	<b>828</b>	<b>0</b>
<b>PROD</b>	<b>8.75</b>	<b>5.5</b>	<b>17</b>	<b>23130</b>	<b>2842</b>	<b>0</b>

**Casing/Cement Program: Additional Comments**

**Prod: 8-3/4" hole fr/0-9663'. 8-1/2" hole fr/9663-23,130'. 5-1/2" P-110 csg run from 0-23,130'**

**<sup>22</sup> Proposed Blowout Prevention Program**

Type	Working Pressure	Test Pressure	Maintenance
<b>DOUBLE RAM</b>	<b>3000</b>	<b>3000</b>	<b>CAMERON</b>

<sup>23</sup> I hereby certify that the information given above is true and complete to the best of my knowledge and belief. I further certify that I have complied with 19.15.14.9 (A) NMAC <input checked="" type="checkbox"/> and/or 19.15.14.9 (B) NMAC <input checked="" type="checkbox"/> if applicable  Signature:  Printed name: <b>Jessica R. Bonilla</b> Title: <b>Regulatory Analyst</b> E-mail Address: <b>jessica_bonilla@xtoenergy.com</b> Date: <b>07/24/2017</b> Phone: <b>432-620-6704</b>		<b>OIL CONSERVATION DIVISION</b>  Approved by:  Title: <b>Geologist</b> Approval Date: <b>7-31-17</b> Expiration Date: <b>7-31-19</b>  Conditions of Approval Attached	
---	--	--	--

District I  
1625 N French Dr., Hobbs, NM 88240  
Phone (575) 393-6161 Fax: (575) 393-0720  
District II  
811 S. First St., Artesia, NM 88210  
Phone: (575) 748-1283 Fax: (575) 748-9720  
District III  
1000 Rio Brazos Road, Aztec, NM 87410  
Phone: (505) 334-6178 Fax: (505) 334-6170  
District IV  
1220 S. St. Francis Dr., Santa Fe, NM 87505  
Phone: (505) 476-3460 Fax: (505) 476-3462

State of New Mexico **NM OIL CONSERVATION**  
Energy, Minerals & Natural Resources Department **ARTESIA DISTRICT**  
OIL CONSERVATION DIVISION **JUL 28 2017**  
1220 South St. Francis Dr.  
Santa Fe, NM 87505

Form C-102  
Revised August 1, 2011  
Submit one copy to appropriate  
District Office

**RECEIVED**

☐ AMENDED REPORT

**WELL LOCATION AND ACREAGE DEDICATION PLAT**

<sup>1</sup> API Number <b>30-015-44342</b>	<sup>2</sup> Pool Code <b>47545</b>	<sup>3</sup> Pool Name <b>Nash Draw; Delaware/ BS (Avalon Sand)</b>
<sup>4</sup> Property Code <b>318423</b>	<sup>5</sup> Property Name <b>REMUDA NORTH 31 STATE</b>	
<sup>7</sup> GRID NO. <b>005380</b>	<sup>8</sup> Operator Name <b>XTO ENERGY, INC.</b>	<sup>6</sup> Well Number <b>703H</b>
		<sup>9</sup> Elevation <b>3208'</b>

<sup>10</sup> Surface Location

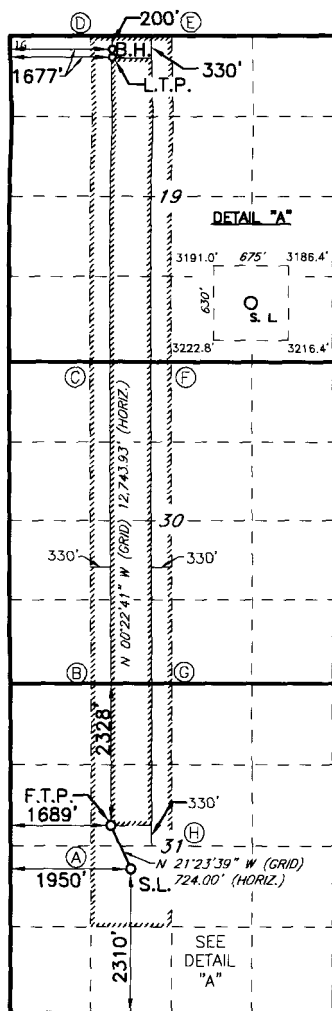
UL or lot no.	Section	Township	Range	Lot Idn	Feet from the	North/South line	Feet From the	East/West line	County
<b>K</b>	<b>31</b>	<b>23S</b>	<b>30E</b>		<b>2310</b>	<b>SOUTH</b>	<b>1950</b>	<b>WEST</b>	<b>EDDY</b>

<sup>11</sup> Bottom Hole Location If Different From Surface

UL or lot no.	Section	Township	Range	Lot Idn	Feet from the	North/South line	Feet from the	East/West line	County
<b>C</b>	<b>19</b>	<b>23S</b>	<b>30E</b>		<b>200</b>	<b>NORTH</b>	<b>1677</b>	<b>WEST</b>	<b>EDDY</b>

<sup>12</sup> Dedicated Acres <b>400</b>	<sup>13</sup> Joint or Infill <b>440</b>	<sup>14</sup> Consolidation Code	<sup>15</sup> Order No.
---	---	----------------------------------	-------------------------

No allowable will be assigned to this completion until all interest have been consolidated or a non-standard unit has been approved by the division.



**GEODETTIC DATA**  
NAD 27 GRID - NM EAST

**BOTTOM HOLE**  
N: 472029.7 - E: 626563.4  
LAT: 32.2970617° N  
LONG: 103.9237326° W

**LAST TAKE POINT**  
N: 471899.7 - E: 626564.3  
LAT: 32.2967044° N  
LONG: 103.9237315° W

**CORNER DATA**  
NAD 27 GRID - NM EAST

A: CALCULATED CORNER  
N: 458958.7 - E: 626319.7  
B: CALCULATED CORNER  
N: 461615.5 - E: 626302.5  
C: CALCULATED CORNER  
N: 466922.8 - E: 626269.6  
D: CALCULATED CORNER  
N: 472229.0 - E: 626232.2  
E: FOUND BRASS CAP "1916"  
N: 472231.8 - E: 627570.3  
F: FOUND BRASS CAP "1942"  
N: 466926.0 - E: 627608.5  
G: FOUND BRASS CAP "1942"  
N: 461620.4 - E: 627639.1  
H: CALCULATED CORNER  
N: 458963.9 - E: 627657.8

**GEODETTIC DATA**  
NAD 27 GRID - NM EAST

**FIRST TAKE POINT**  
N: 459288.8 - E: 626647.5  
LAT: 32.2620374° N  
LONG: 103.9236180° W

**SURFACE LOCATION**  
N: 458614.9 - E: 626911.6  
LAT: 32.2601819° N  
LONG: 103.9227721° W

**GEODETTIC DATA**  
NAD 83 GRID - NM EAST

**BOTTOM HOLE**  
N: 472089.3 - E: 667746.7  
LAT: 32.2971840° N  
LONG: 103.9242224° W

**LAST TAKE POINT**  
N: 471959.3 - E: 667747.6  
LAT: 32.2968266° N  
LONG: 103.9242213° W

**CORNER DATA**  
NAD 83 GRID - NM EAST

A: CALCULATED CORNER  
N: 459018.0 - E: 667503.3  
B: CALCULATED CORNER  
N: 461674.8 - E: 667485.9  
C: CALCULATED CORNER  
N: 466982.2 - E: 667452.9  
D: CALCULATED CORNER  
N: 472288.5 - E: 667415.4  
E: FOUND BRASS CAP "1916"  
N: 472291.3 - E: 668753.5  
F: FOUND BRASS CAP "1942"  
N: 466985.5 - E: 668791.9  
G: FOUND BRASS CAP "1942"  
N: 461679.6 - E: 668822.5  
H: CALCULATED CORNER  
N: 459023.1 - E: 668841.3

**GEODETTIC DATA**  
NAD 83 GRID - NM EAST

**FIRST TAKE POINT**  
N: 459348.0 - E: 667831.1  
LAT: 32.2621599° N  
LONG: 103.9241067° W

**SURFACE LOCATION**  
N: 458674.1 - E: 668095.1  
LAT: 32.2603045° N  
LONG: 103.9232608° W

<sup>17</sup> OPERATOR CERTIFICATION

I hereby certify that the information contained herein is true and complete to the best of my knowledge and belief, and that this organization either owns a working interest or unleased mineral interest in the land including the proposed bottom hole location or has a right to drill this well at this location pursuant to a contract with an owner of such a mineral or working interest, or to a voluntary pooling agreement or a compulsory pooling order heretofore entered by the division.

*Jessica Bonilla* 7/24/2017  
Signature Date  
**Jessica R Bonilla**  
Printed Name  
**jessica\_bonilla@xtoenergy.com**  
E-mail Address

<sup>18</sup> SURVEYOR CERTIFICATION

I hereby certify that the well location shown on this plat was plotted from field notes of actual surveys made by me or under my supervision, and that the same is true and correct to the best of my belief.

**4-22-2017**  
Date of Survey

Signature and Seal of Professional Surveyor  
**19680**  
Certificate Number

