

DISTRICT I
1625 N. French Dr., Hobbs, NM 88240
Phone: (505) 393-6161 Fax (505) 393-0720

DISTRICT II
811 S. First St., Artesia, NM 88210
Phone: (505) 748-1283 Fax (505) 748-9720

DISTRICT III
1900 Rio Brazos Road, Aztec, NM 87410
Phone: (505) 334-6178 Fax (505) 334-6170

DISTRICT IV
1220 S. St. Francis Dr., Santa Fe, NM 87505
Phone: (505) 476-3460 Fax (505) 476-3462

State of New Mexico
Energy, Minerals & Natural Resources Department
OIL CONSERVATION DIVISION
1220 South St. Francis Dr.
Santa Fe, New Mexico 87505

Form C-102
Revised August 1, 2011
Submit one copy to appropriate
District Office

JAN 09 2018

DAMENDED REPORT

RECEIVED

WELL LOCATION AND ACREAGE DEDICATION PLAT

API Number 30-015-43559	Pool Code 96831	Pool Name CEDAR LAKE; GLORIETA-YESO
Property Code 315935	Property Name CEDAR LAKE FEDERAL CA	Well Number 303H
OGRID No. 873	Operator Name APACHE CORPORATION	Elevation 3952'

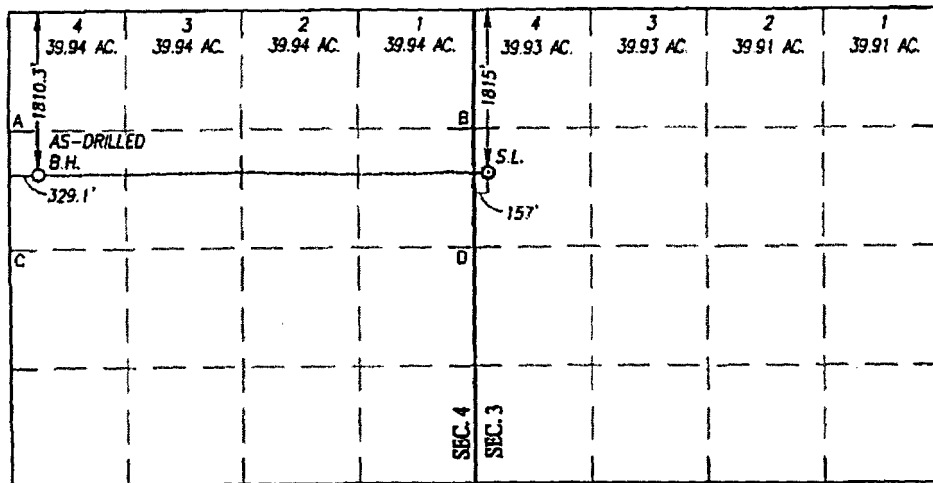
Surface Location

UL or lot No.	Section	Township	Range	Lot Idn	Feet from the	North/South line	Feet from the	East/West line	County
E	3	17-S	31-E		1815	NORTH	157	WEST	EDDY

As-Drilled Bottom Hole Location If Different From Surface

UL or lot No.	Section	Township	Range	Lot Idn	Feet from the	North/South line	Feet from the	East/West line	County
E	4	17-S	31-E		1810.3	NORTH	329.1	WEST	EDDY
Dedicated Acres 160	Joint or Infill	Consolidation Code	Order No.						

NO ALLOWABLE WILL BE ASSIGNED TO THIS COMPLETION UNTIL ALL INTERESTS HAVE BEEN CONSOLIDATED OR A NON-STANDARD UNIT HAS BEEN APPROVED BY THE DIVISION



OPERATOR CERTIFICATION

I hereby certify that the information herein is true and complete to the best of my knowledge and belief, and that this organization either owns a working interest or unEDDYed mineral interest in the land including the proposed bottom hole location or has a right to drill this well at this location pursuant to a contract with an owner of such mineral or working interest, or to a voluntary pooling agreement or a compulsory pooling order heretofore entered by the court.

Emily Follis 1/8/18
Signature Date

Emily Follis

Printed Name

emily.follis@apachecorp.com

E-mail Address

SURVEYOR CERTIFICATION

I hereby certify that the well location shown on this plat was plotted from field notes of actual surveys made by me or under my supervision, and that the same is true and correct to the best of my belief.

MAY 4, 2012

Date of Survey
Signature of Surveyor

RONALD J. EIDSON
NEW MEXICO
3239
REGISTERED SURVEYOR
Certificate Number 12641
Ronald J. Eidson 3239
ACK REL W.O. 1713.0726 JWSC W.O. 1713.0833

AS-DRILLED
BOTTOM HOLE LOCATION
NAD 83 NME
Y= 679026.8 N
X= 679838.6 E
LAT.=32.865853° N
LONG.=103.882250° W
LAT.=32° 51' 57" N
LONG.=103° 52' 56" W

CORNER COORDINATES TABLE
NAD 83 NME

A - Y= 679515.7 N, X= 679506.7 E
B - Y= 679553.5 N, X= 684786.9 E
C - Y= 678195.5 N, X= 679514.2 E
D - Y= 678231.9 N, X= 684794.9 E

GEODETIC COORDINATES

NAD 83 NME
SURFACE LOCATION
Y= 679055.8 N
X= 684946.4 E
LAT.=32.865872° N
LONG.=103.865614° W
LAT.=32° 51' 57" N
LONG.=103° 51' 56" W

NOTE: AS-DRILLED BOTTOM HOLE PLOTTED FROM DATA FURNISHED BY
PHOENIX TECHNOLOGY SERVICES SURVEY REPORT; AUGUST 18, 2017