

District I
1625 N. French Dr., Hobbs, NM 88240
Phone: (575) 393-6161 Fax: (575) 393-0720
District II
811 S. First St., Artesia, NM 88210
Phone: (575) 748-1283 Fax: (575) 748-9720
District III
1000 Rio Brazos Road, Aztec, NM 87410
Phone: (505) 334-6178 Fax: (505) 334-6170
District IV
1220 S. St. Francis Dr., Santa Fe, NM 87505
Phone: (505) 476-3460 Fax: (505) 476-3462

State of New Mexico
Energy, Minerals & Natural Resources Department

OIL CONSERVATION DISTRICT

1220 South St. Francis Dr.

Santa Fe, NM 87505

ARTESIA DISTRICT

Form C-102

Revised August 1, 2011

one copy to appropriate

District Office

MAR 26 2018

☐ AMENDED REPORT

WELL LOCATION AND ACREAGE DEDICATION

RECEIVED

¹ API Number 30-015-44831	² Pool Code 98220	³ Pool Name PURPLE SAGE, WOLFCAMP (GAS)
⁴ Property Code 321145	⁵ Property Name SOUTHERN COMFORT STATE 24 28 25 WA	⁶ Well Number 5H
⁷ OGRID No. 372098	⁸ Operator Name MARATHON OIL PERMIAN LLC	⁹ Elevation 2919'

" Surface Location

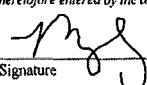
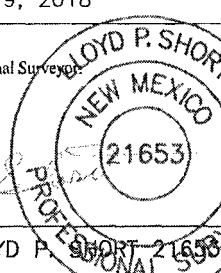
UL or lot no.	Section	Township	Range	Lot Idn	Feet from the	North/South line	Feet from the	East/West line	County
J	25	T24S	R28E		2424'	SOUTH	1808	EAST	EDDY

" Bottom Hole Location If Different From Surface

UL or lot no.	Section	Township	Range	Lot Idn	Feet from the	North/South line	Feet from the	East/West line	County
O	36	T24S	R28E		330	SOUTH	1325	EAST	EDDY

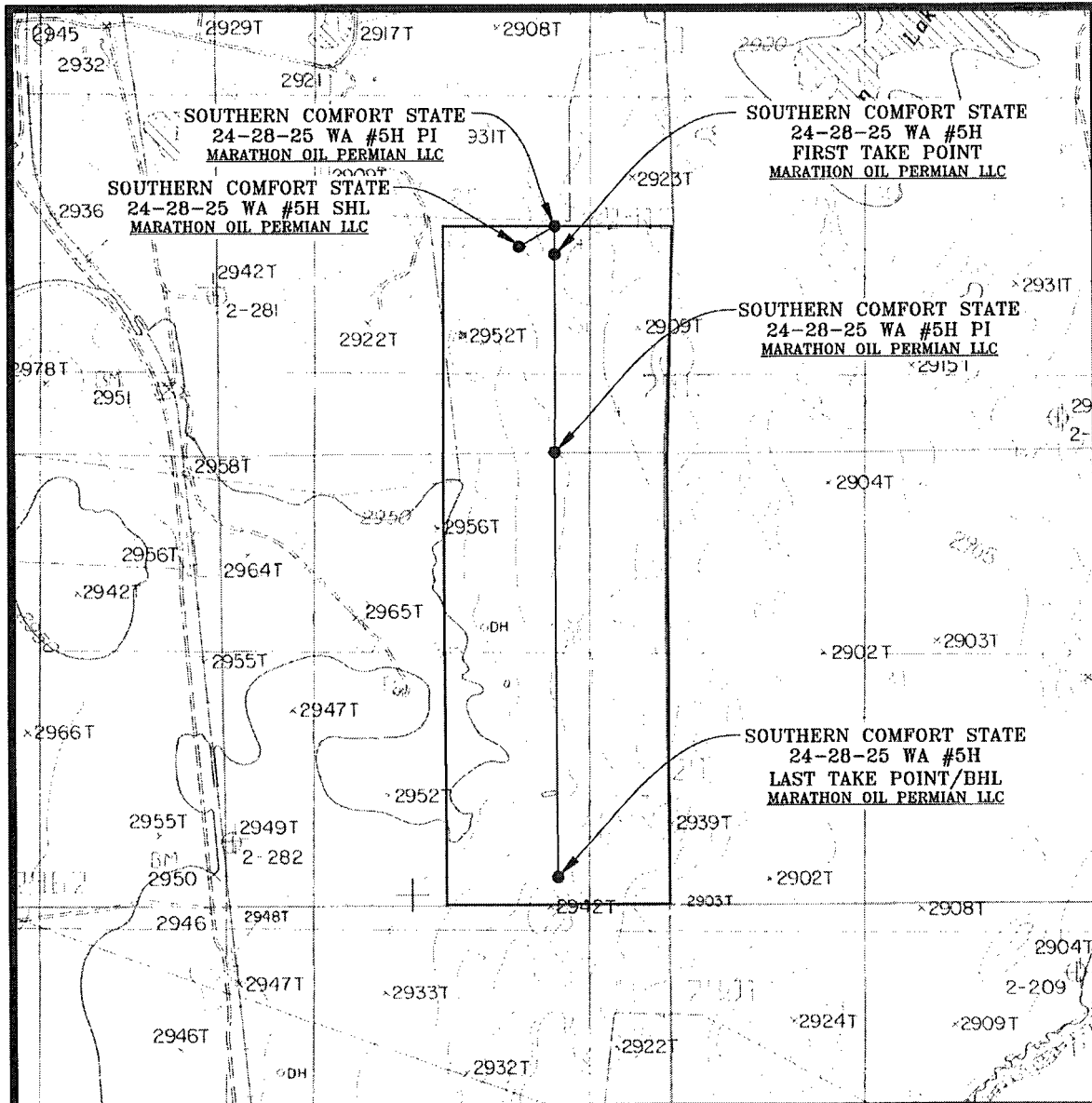
¹¹ Dedicated Acres 480.00	¹² Joint or Infill	¹³ Consolidation Code	¹⁴ Order No.
---	-------------------------------	----------------------------------	-------------------------

No allowable will be assigned to this completion until all interests have been consolidated or a non-standard unit has been approved by the division.

<p>¹⁶</p> <p>SURFACE HOLE LOCATION 2424' FSL 1808' FEL, SECTION 25 NAD 83, SPCS NM EAST X:632742.95' / Y:432187.43' LAT:32.18781563N / LON:104.03786240W NAD 27, SPCS NM EAST X:591559.01' / Y:432128.89' LAT:32.18769307N / LON:104.03737273W</p> <p>FIRST TAKE POINT 2332' FSL 1381' FEL, SECTION 25 NAD 83, SPCS NM EAST X:633167.26' / Y:432096.06' LAT:32.18756128N / LON:104.03649160W NAD 27, SPCS NM EAST X:591983.31' / Y:432037.52' LAT:32.18743869N / LON:104.03600203W</p> <p>CORNER COORDINATES NAD 83, SPCS NM EAST A - X: 631832.26' / Y: 432425.89' B - X: 634556.81' / Y: 432426.25' C - X: 634500.87' / Y: 424428.61' D - X: 631852.62' / Y: 424424.60'</p> <p>CORNER COORDINATES NAD 27, SPCS NM EAST A - X: 590648.34' / Y: 432367.36' B - X: 593372.84' / Y: 432367.68' C - X: 593316.72' / Y: 424370.20' D - X: 590668.52' / Y: 424366.23'</p> <p>LAST TAKE POINT/BOTTOM HOLE LOCATION 330' FSL 1325' FEL, SECTION 36 NAD 83, SPCS NM EAST X:633175.56' / Y:424756.60' LAT:32.16738585N / LON:104.03653020W NAD 27, SPCS NM EAST X:591991.44' / Y:424698.21' LAT:32.16726301N / LON:104.03604129W</p>	<p>SHL 228' 330'</p> <p>PI 1808'</p> <p>1381'</p> <p>FIRST TAKE</p> <p>PI</p> <p>2424'</p> <p>2332'</p> <p>S 00°14'10"W 2,332.29'</p> <p>S 00°12'18"W 5,007.22'</p> <p>1325'</p> <p>330'</p>	<p>" OPERATOR CERTIFICATION</p> <p>I hereby certify that the information contained herein is true and complete to the best of my knowledge and belief, and that this organization either owns a working interest or unleased mineral interest in the land including the proposed bottom hole location or has a right to drill this well at this location pursuant to a contract with an owner of such a mineral or working interest, or to a voluntary pooling agreement or a compulsory pooling order heretofore entered by the division.</p> <p>Signature  Date 03/27/2018</p> <p>Printed Name Melissa Szudera</p> <p>E-mail Address mszudera@marathonoil.com</p> <p>" SURVEYOR CERTIFICATION</p> <p>I hereby certify that the well location shown on this plat was plotted from field notes of actual surveys made by me or under my supervision, and that the same is true and correct to the best of my belief.</p> <p>MARCH 19, 2018</p> <p>Date of Survey</p> <p>Signature and Seal of Professional Surveyor </p> <p>Certificate Number LLOYD P. SHORT 21653</p>
--	--	---

MAR 26 2018

RECEIVED

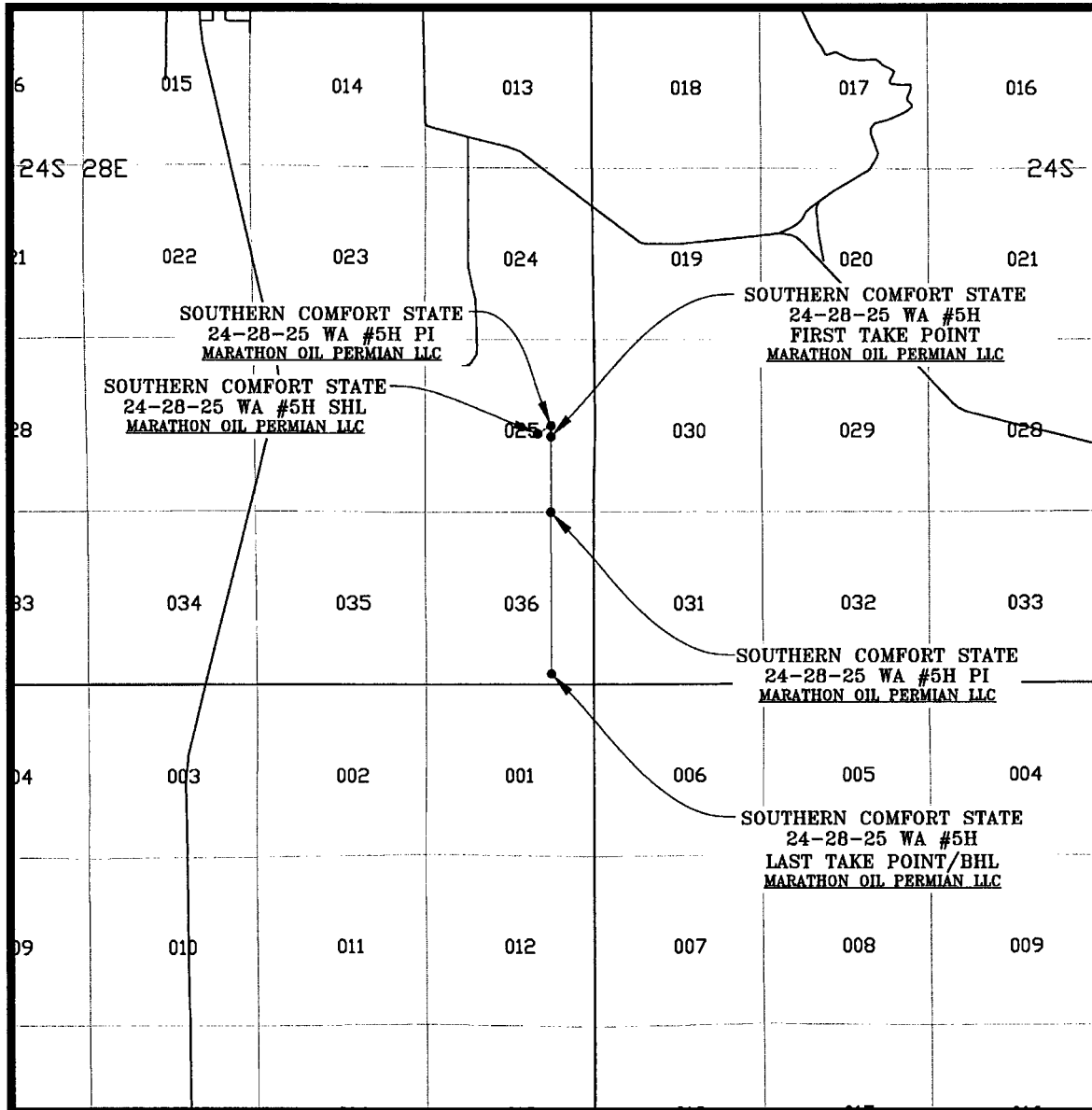


SEC. 25 TWP. 24-S RGE. 28-E
SURVEY: N.M.P.M.
COUNTY: EDDY
DESCRIPTION: 2424' FSL & 1808' FEL
ELEVATION: 2919'
OPERATOR: MARATHON OIL PERMIAN LLC
LEASE: SOUTHERN COMFORT STATE 24 28 25
U.S.G.S. TOPOGRAPHIC MAP: MALAGA, N.M.

SCALE: 1" = 2000'
CONTOUR INTERVAL = 10'

PREPARED BY:
R-SQUARED GLOBAL, LLC
1309 LOUISVILLE AVENUE, MONROE, LA 71201
318-323-6900 OFFICE
JOB No. R3746_005

VICINITY MAP



SEC. 25 TWP. 24-S RGE. 28-E
 SURVEY: N.M.P.M.
 COUNTY: EDDY
 DESCRIPTION: 2424' FSL & 1808' FEL
 ELEVATION: 2919'
 OPERATOR: MARATHON OIL PERMIAN LLC
 LEASE: SOUTHERN COMFORT STATE 24 28 25
 U.S.G.S. TOPOGRAPHIC MAP: MALAGA, N.M.

PREPARED BY:
 R-SQUARED GLOBAL, LLC
 1309 LOUISVILLE AVENUE, MONROE, LA 71201
 318-323-6900 OFFICE
 JOB No. R3748_005