

District I  
1625 N. French Dr., Hobbs, NM 88240  
Phone: (575) 393-6161 Fax: (575) 393-0720  
District II  
811 S. First St., Artesia, NM 88210  
Phone: (575) 748-1283 Fax: (575) 748-9720  
District III  
1000 Rio Brazos Road, Aztec, NM 87410  
Phone: (505) 334-6178 Fax: (505) 334-6170  
District IV  
1220 S. St. Francis Dr., Santa Fe, NM 87505  
Phone: (505) 476-3460 Fax: (505) 476-3462

State of New Mexico  
Energy, Minerals & Natural Resources Department  
OIL CONSERVATION DIVISION  
1220 South St. Francis Dr.  
Santa Fe, NM 87505

Form C-102  
Revised August 1, 2011  
Submit a copy to appropriate  
District Office

MAR 26 2018 ☐ AMENDED REPORT

WELL LOCATION AND ACREAGE DEDICATION **RECEIVED**

<sup>1</sup> API Number 30-015-44833	<sup>2</sup> Pool Code 98220	<sup>3</sup> Pool Name PURPLE SAGE; WOLFCAMP (GAS)
<sup>4</sup> Property Code 321147	<sup>5</sup> Property Name SOUTHERN COMFORT STATE 24 28 25 WD	<sup>6</sup> Well Number 9H
<sup>7</sup> OGRID No. 372098	<sup>8</sup> Operator Name MARATHON OIL PERMIAN LLC	<sup>9</sup> Elevation 2919'

<sup>10</sup> Surface Location

UL or lot no.	Section	Township	Range	Lot Idn	Feet from the	North/South line	Feet from the	East/West line	County
J	25	T24S	R28E		2423'	SOUTH	1748	EAST	EDDY

<sup>11</sup> Bottom Hole Location If Different From Surface

UL or lot no.	Section	Township	Range	Lot Idn	Feet from the	North/South line	Feet from the	East/West line	County
P	36	T24S	R28E		330	SOUTH	330	EAST	EDDY

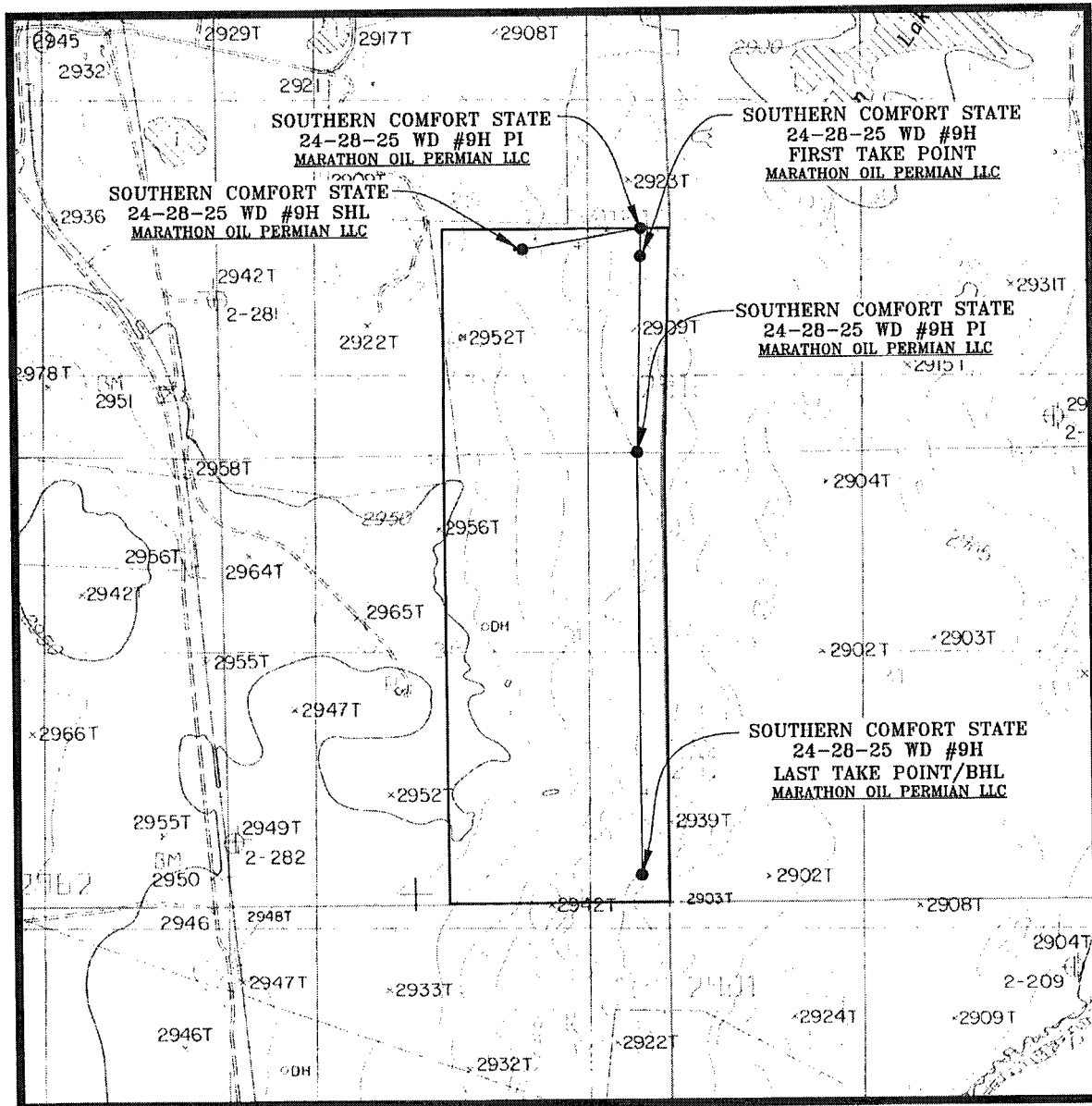
<sup>12</sup> Dedicated Acres 480.00	<sup>13</sup> Joint or Infill	<sup>14</sup> Consolidation Code	<sup>15</sup> Order No.
---	-------------------------------	----------------------------------	-------------------------

No allowable will be assigned to this completion until all interests have been consolidated or a non-standard unit has been approved by the division.

<p><b>16</b></p> <p><b>SURFACE HOLE LOCATION</b> 2423' FSL 1748' FEL, SECTION 25 NAD 83, SPCS NM EAST X:632802.95' / Y:432187.43' LAT:32.18781510N / LON:104.03766840W NAD 27, SPCS NM EAST X:591619.01' / Y:432128.89' LAT:32.18769261N / LON:104.03717879W</p> <p><b>FIRST TAKE POINT</b> 2332' FSL 330' FEL, SECTION 25 NAD 83, SPCS NM EAST X:634218.46' / Y:432096.20' LAT:32.18755365N / LON:104.03309360W NAD 27, SPCS NM EAST X:593034.49' / Y:432027.65' LAT:32.18743100N / LON:104.03260419W</p> <p><b>CORNER COORDINATES</b> NAD 83, SPCS NM EAST A - X: 631832.26' / Y: 432425.89' B - X: 634556.81' / Y: 432426.25' C - X: 634500.87' / Y: 424428.61' D - X: 631852.62' / Y: 424424.60'</p> <p><b>CORNER COORDINATES</b> NAD 27, SPCS NM EAST A - X: 590648.34' / Y: 432367.36' B - X: 593372.84' / Y: 432367.68' C - X: 593316.72' / Y: 424370.20' D - X: 590668.52' / Y: 424366.23'</p> <p><b>LAST TAKE POINT/BOTTOM HOLE LOCATION</b> 330' FSL 330' FEL, SECTION 36 NAD 83, SPCS NM EAST X:634170.22' / Y:424758.11' LAT:32.16738240N / LON:104.03331570W NAD 27, SPCS NM EAST X:592986.08' / Y:424699.70' LAT:32.16725952N / LON:104.03282692W</p> <p>SECTION 26 SECTION 25 SECTION 35 SECTION 36</p> <p>SECTION 35 SECTION 36 T-24-S SECTION 2 SECTION 1 T-25-S</p> <p>SHL 2423' 2332' 330' 1748' 330'</p> <p>S 01°25'53" W 2,337.54'</p> <p>S 00°06'52" W 5,007.30'</p> <p>PI 1748' 330'</p> <p>FIRST TAKE</p> <p>LAST TAKE/BHL</p> <p>330' SECTION 31 330' SECTION 31 R-28-E R-29-E</p>	<p><b>17 OPERATOR CERTIFICATION</b> I hereby certify that the information contained herein is true and complete to the best of my knowledge and belief, and that this organization either owns a working interest or unleased mineral interest in the land including the proposed bottom hole location or has a right to drill this well at this location pursuant to a contract with an owner of such a mineral or working interest, or to a voluntary pooling agreement or a compulsory pooling order heretofore entered by the division.</p> <p><i>[Signature]</i> 03/27/2018 Signature Date</p> <p>Melissa Szudera Printed Name</p> <p>mszudera@marathonoil.com E-mail Address</p> <p><b>18 SURVEYOR CERTIFICATION</b> I hereby certify that the well location shown on this plat was plotted from field notes of actual surveys made by me or under my supervision, and that the same is true and correct to the best of my belief.</p> <p>MARCH 19, 2018 Date of Survey</p> <p><i>[Signature]</i> Signature and Seal of Professional Surveyor</p> <p>LLOYD P. SHORT Certificate Number</p> <p><b>LLOYD P. SHORT</b> NEW MEXICO 21653 PROFESSIONAL SURVEYOR</p>
---	--

NSP  
KW<sup>2</sup>3-30-18

# LOCATION VERIFICATION MAP

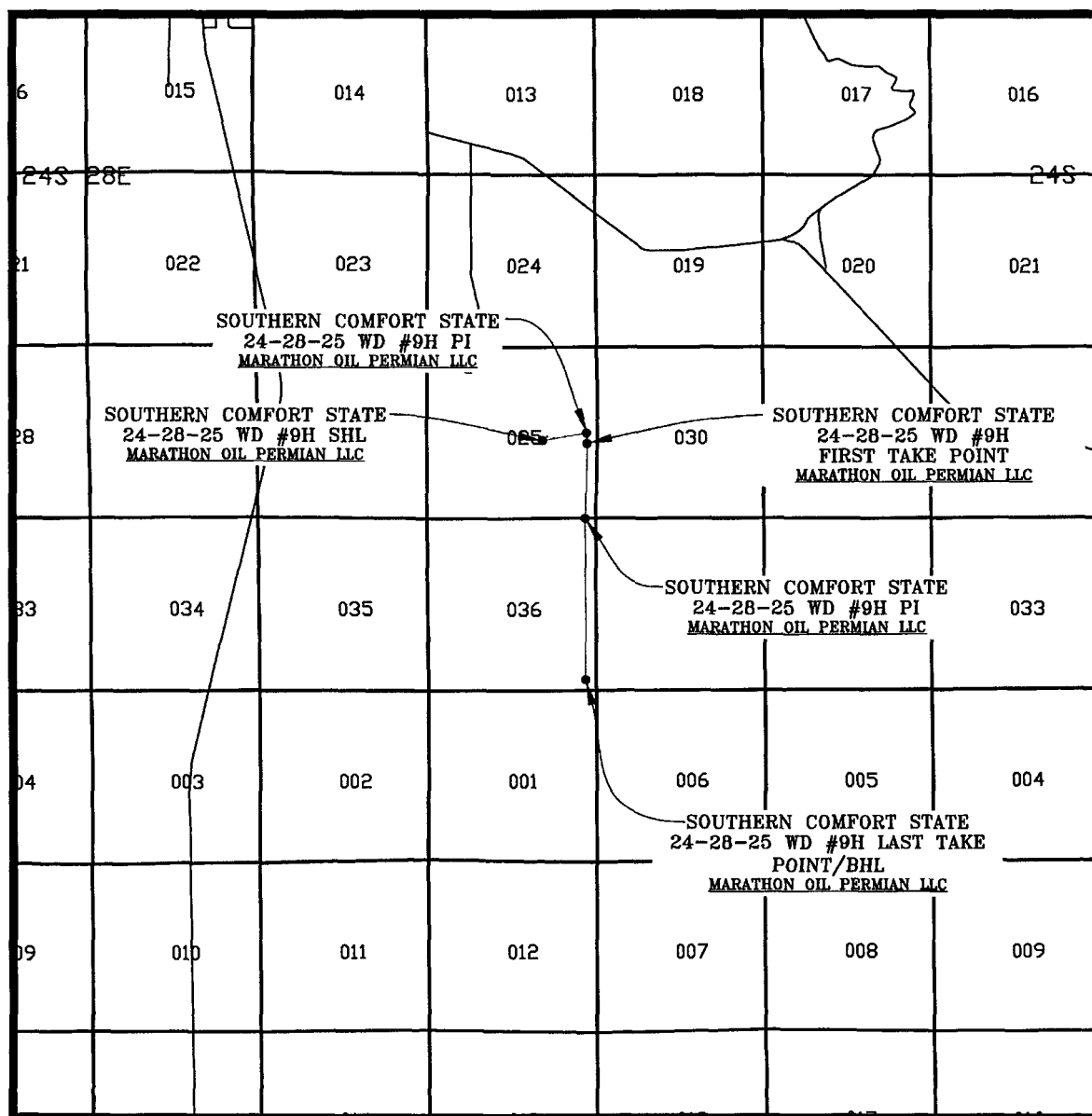


SEC. 25 TWP. 24-S RGE. 28-E  
 SURVEY: N.M.P.M.  
 COUNTY: EDDY  
 DESCRIPTION: 2423' FSL & 1748' FEL  
 ELEVATION: 2919'  
 OPERATOR: MARATHON OIL PERMIAN LLC  
 LEASE: SOUTHERN COMFORT STATE 24 28 25  
 U.S.G.S. TOPOGRAPHIC MAP: MALAGA, N.M.

SCALE: 1" = 2000'  
 CONTOUR INTERVAL = 10'

PREPARED BY:  
 R-SQUARED GLOBAL, LLC  
 1309 LOUISVILLE AVENUE, MONROE, LA 71201  
 318-323-8900 OFFICE  
 JOB No. R3746\_007

# VICINITY MAP



SEC. 25 TWP. 24-S RGE. 28-E

SCALE: 1" = 1 MILE

SURVEY: N.M.P.M.

COUNTY: EDDY

DESCRIPTION: 2423' FSL & 1748' FEL

ELEVATION: 2919'

OPERATOR: MARATHON OIL PERMIAN LLC

LEASE: SOUTHERN COMFORT STATE 24 28 25

U.S.G.S. TOPOGRAPHIC MAP: MALAGA, N.M.

PREPARED BY:  
R-SQUARED GLOBAL, LLC  
1309 LOUISVILLE AVENUE, MONROE, LA 71201  
318-323-6900 OFFICE  
JOB No. R3746\_007