

District I
1625 N. French Dr., Hobbs, NM 88240
Phone: (575) 393-6161 Fax: (575) 393-0720
District II
811 S. First St., Artesia, NM 88210
Phone: (575) 748-1283 Fax: (575) 748-9720
District III
1000 Rio Brazos Road, Aztec, NM 87410
Phone: (505) 334-6178 Fax: (505) 334-6170
District IV
1220 S. St. Francis Dr., Santa Fe, NM 87505
Phone: (505) 476-3460 Fax: (505) 476-3462

State of New Mexico
Energy, Minerals & Natural Resources Department
OIL CONSERVATION DIVISION
1220 South St. Francis Dr.
Santa Fe, NM 87505

Form C-102
Revised August 1, 2011
Submit one copy to appropriate District Office

MAR 26 2018

AMENDED REPORT

WELL LOCATION AND ACREAGE DEDICATION PLAT

¹ API Number 30-015-44834	² Pool Code 98220	³ Pool Name PURPLE SAGE; WOLFCAMP (GAS)
⁴ Property Code 321147	⁵ Property Name SOUTHERN COMFORT STATE 24-28-25 WD	⁶ Well Number 10H
⁷ OGRID No. 372098	⁸ Operator Name MARATHON OIL PERMIAN LLC	⁹ Elevation 2918'

" Surface Location

UL or lot no.	Section	Township	Range	Lot Idn	Feet from the	North/South line	Feet from the	East/West line	County
J	25	24S	28E		2424	SOUTH	1838	EAST	EDDY

" Bottom Hole Location If Different From Surface

UL or lot no.	Section	Township	Range	Lot Idn	Feet from the	North/South line	Feet from the	East/West line	County
O	36	24S	28E		330	SOUTH	2319	EAST	EDDY

¹² Dedicated Acres 480.00	¹³ Joint or Infill	¹⁴ Consolidation Code	¹⁵ Order No.
---	-------------------------------	----------------------------------	-------------------------

No allowable will be assigned to this completion until all interests have been consolidated or a non-standard unit has been approved by the division.

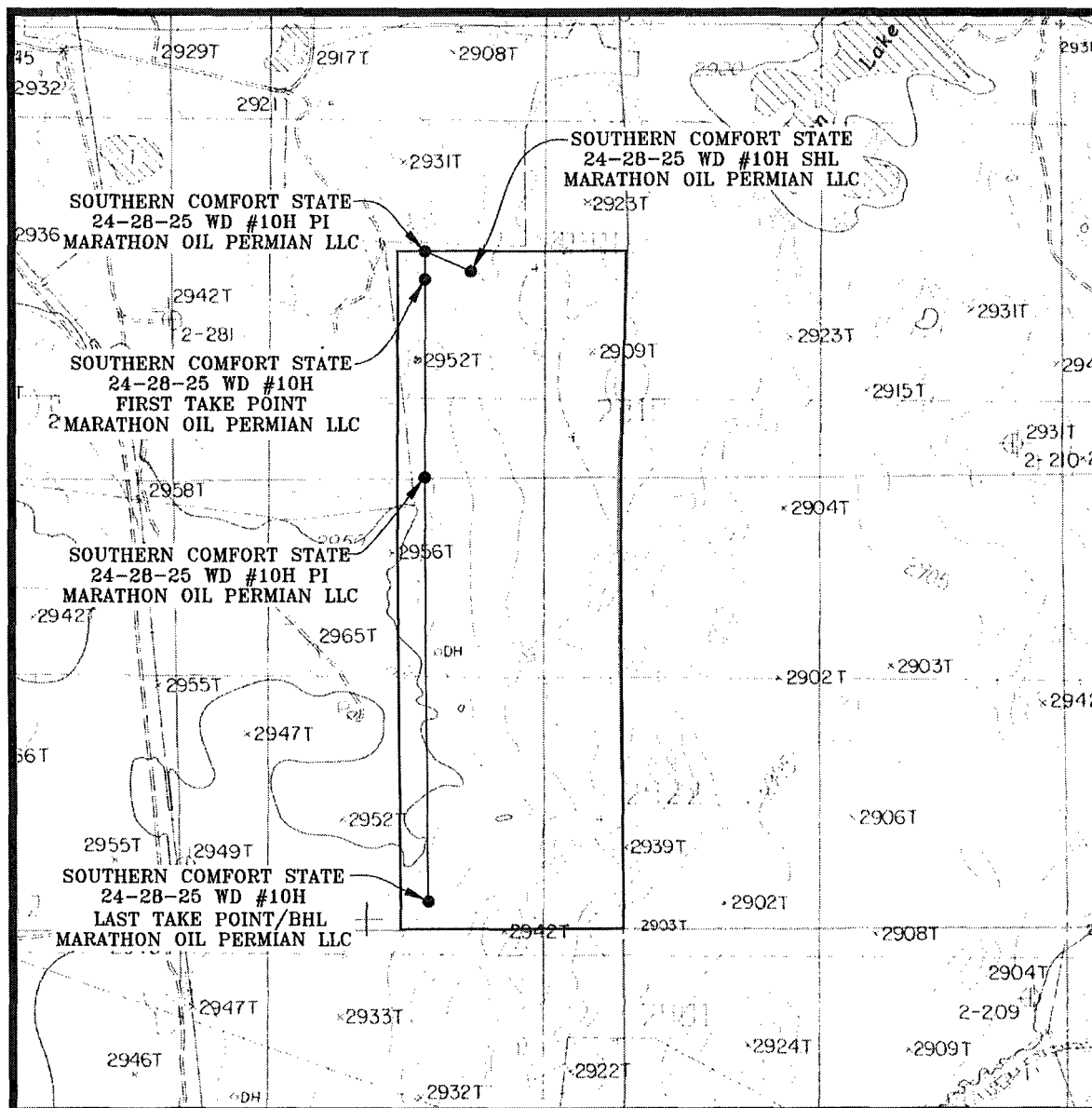
<p>SURFACE HOLE LOCATION 2424' FSL 1838' FEL, SECTION 25 NAD 83, SPCS NM EAST X:632712.95' / Y:432187.43' LAT:32.18781586N / LON:104.03795940W NAD 27, SPCS NM EAST X:591529.01' / Y:432128.89' LAT:32.18769330N / LON:104.03746971W</p> <p>FIRST TAKE POINT 2334' FSL 2387' FEL, SECTION 25 NAD 83, SPCS NM EAST X:632161.36' / Y:4322095.93' LAT:32.18756850N / LON:104.03974320W NAD 27, SPCS NM EAST X:590977.43' / Y:432037.40' LAT:32.18744596N / LON:104.03925345W</p> <p>LAST TAKE POINT/BOTTOM HOLE LOCATION 330' FSL 2319' FEL, SECTION 36 NAD 83, SPCS NM EAST X:632180.91' / Y:424755.10' LAT:32.16738921N / LON:104.03974470W NAD 27, SPCS NM EAST X:590996.81' / Y:424696.72' LAT:32.16726642N / LON:104.03925565W</p> <p>CORNER COORDINATES NAD 83, SPCS NM EAST A - X: 631832.26' / Y: 432425.89' B - X: 634556.81' / Y: 432426.25' C - X: 634500.87' / Y: 424428.61' D - X: 631952.62' / Y: 424424.60'</p> <p>CORNER COORDINATES NAD 27, SPCS NM EAST A - X: 590648.34' / Y: 432367.36' B - X: 593372.84' / Y: 432367.68' C - X: 593316.72' / Y: 424370.20' D - X: 590668.52' / Y: 424366.23'</p> <p>LAST TAKE POINT/BHL 330' T-24-S 330' T-25-S</p>		<p>" OPERATOR CERTIFICATION I hereby certify that the information contained herein is true and complete to the best of my knowledge and belief, and that this organization either owns a working interest or unleased mineral interest in the land including the proposed bottom hole location or has a right to drill this well at this location pursuant to a contract with an owner of such a mineral or working interest, or to a voluntary pooling agreement or a compulsory pooling order heretofore entered by the division.</p> <p>Signature: <i>[Signature]</i> Date: 03/23/2018 Printed Name: Melissa Szudera E-mail Address: mszudera@marathonoil.com</p> <p>"SURVEYOR CERTIFICATION I hereby certify that the well location shown on this plat was plotted from field notes of actual surveys made by me or under my supervision, and that the same is true and correct to the best of my belief.</p> <p>MARCH 19, 2018 Date of Survey Signature and Seal of Professional Surveyor: <i>[Signature]</i> Certificate Number: LLOYD P. SHORT 21653</p>	
---	--	---	--

1	03/19/2018	CAP
REV.	DATE	BY

NSP

RW 3-30-18.

LOCATION VERIFICATION MAP

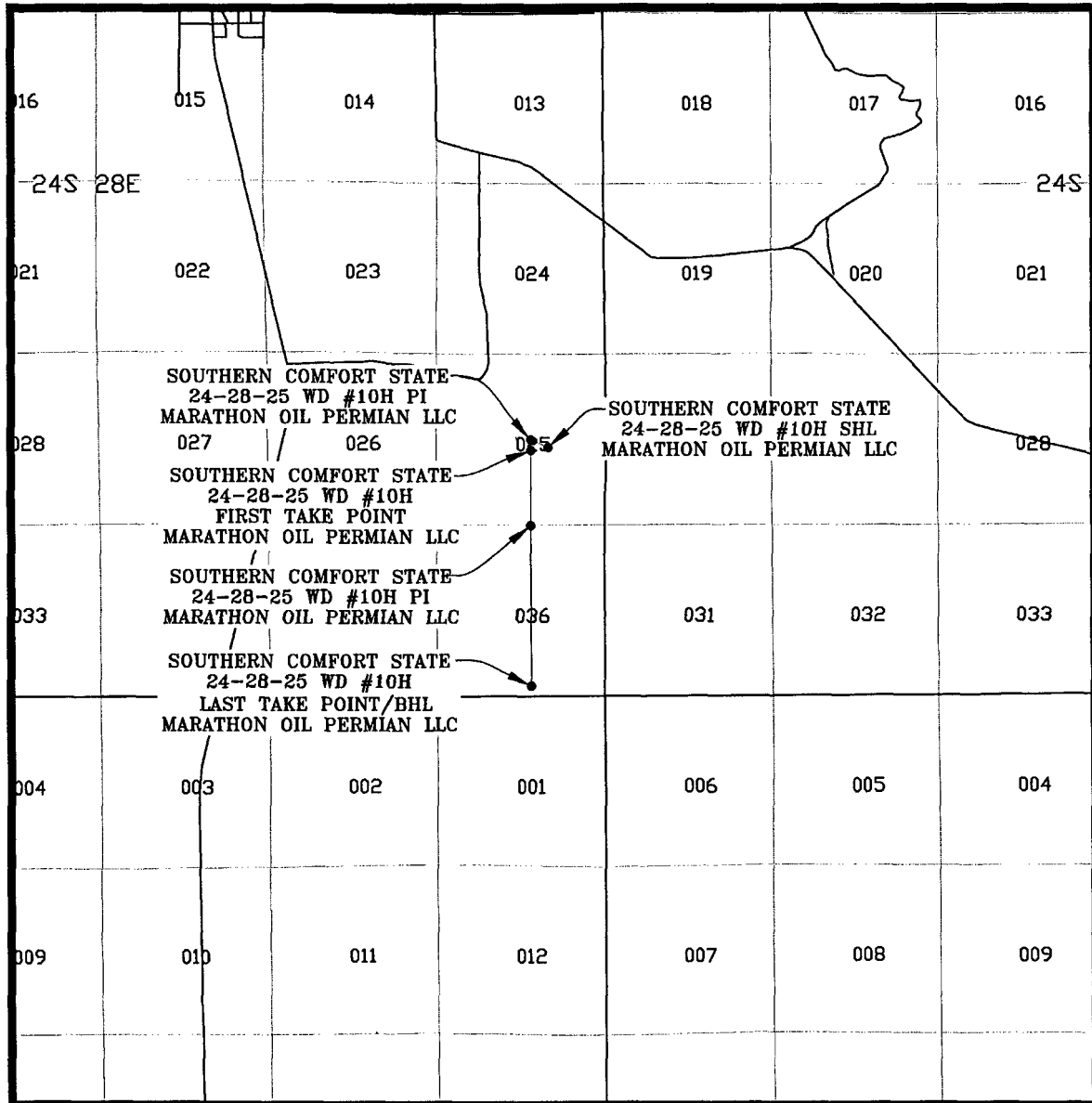


SEC. 24 TWP. 24-S RGE. 28-E
 SURVEY: N.M.P.M.
 COUNTY: EDDY
 DESCRIPTION: 2424' FSL & 1838' FEL
 ELEVATION: 2918'
 OPERATOR: MARATHON OIL PERMIAN LLC
 LEASE: SOUTHERN COMFORT STATE 24-28-25
 U.S.G.S. TOPOGRAPHIC MAP: MALAGA, N.M.

SCALE: 1" = 2000'
 CONTOUR INTERVAL = 10'

PREPARED BY:
 R-SQUARED GLOBAL, LLC
 1309 LOUISVILLE AVENUE, MONROE, LA 71201
 318-323-6900 OFFICE
 JOB No. R3746_008

VICINITY MAP



SEC. 24 TWP. 24-S RGE. 28-E

SURVEY: N.M.P.M.

COUNTY: EDDY

DESCRIPTION: 2424' FSL & 1838' FEL

ELEVATION: 2918'

OPERATOR: MARATHON OIL PERMIAN LLC

LEASE: SOUTHERN COMFORT STATE 24-28-25

U.S.G.S. TOPOGRAPHIC MAP: MALAGA, N.M.

SCALE: 1" = 1 MILE

PREPARED BY:
R-SQUARED GLOBAL, LLC
1309 LOUISVILLE AVENUE, MONROE, LA 71201
318-323-6900 OFFICE
JOB No. R3746_008