

District I
1625 N. French Dr., Hobbs, NM 88240
Phone: (575) 393-6161 Fax: (575) 393-0720
District II
811 S. First St., Artesia, NM 88210
Phone: (575) 748-1283 Fax: (575) 748-9720
District III
1000 Rio Brazos Road, Aztec, NM 87410
Phone: (505) 334-6178 Fax: (505) 334-6170
District IV
1220 S. St. Francis Dr., Santa Fe, NM 87505
Phone: (505) 476-3460 Fax: (505) 476-3462

State of New Mexico
Energy, Minerals & Natural Resources
Department
OIL CONSERVATION DIVISION
1220 South St. Francis Dr.
Santa Fe, NM 87505

FORM C-102
Revised August 1, 2011
Submit one copy to appropriate
District Office

☐ AMENDED REPORT

WELL LOCATION AND ACREAGE DEDICATION PLAT

| | | |
|--|---|---|
| ¹ API Number 30-015-44998 | ² Pool Code 9B220 | ³ Pool Name Purple Sage Wolfcamp (gas) |
| ⁴ Property Code 321472 | ⁵ Property Name PLINY THE ELDER 23S27E0508 | |
| ⁶ GRID No. 372043 | ⁷ Operator Name TAP ROCK OPERATING, LLC. | ⁸ Well Number 201H |
| | | ⁹ Elevation 3150' |

¹⁰Surface Location

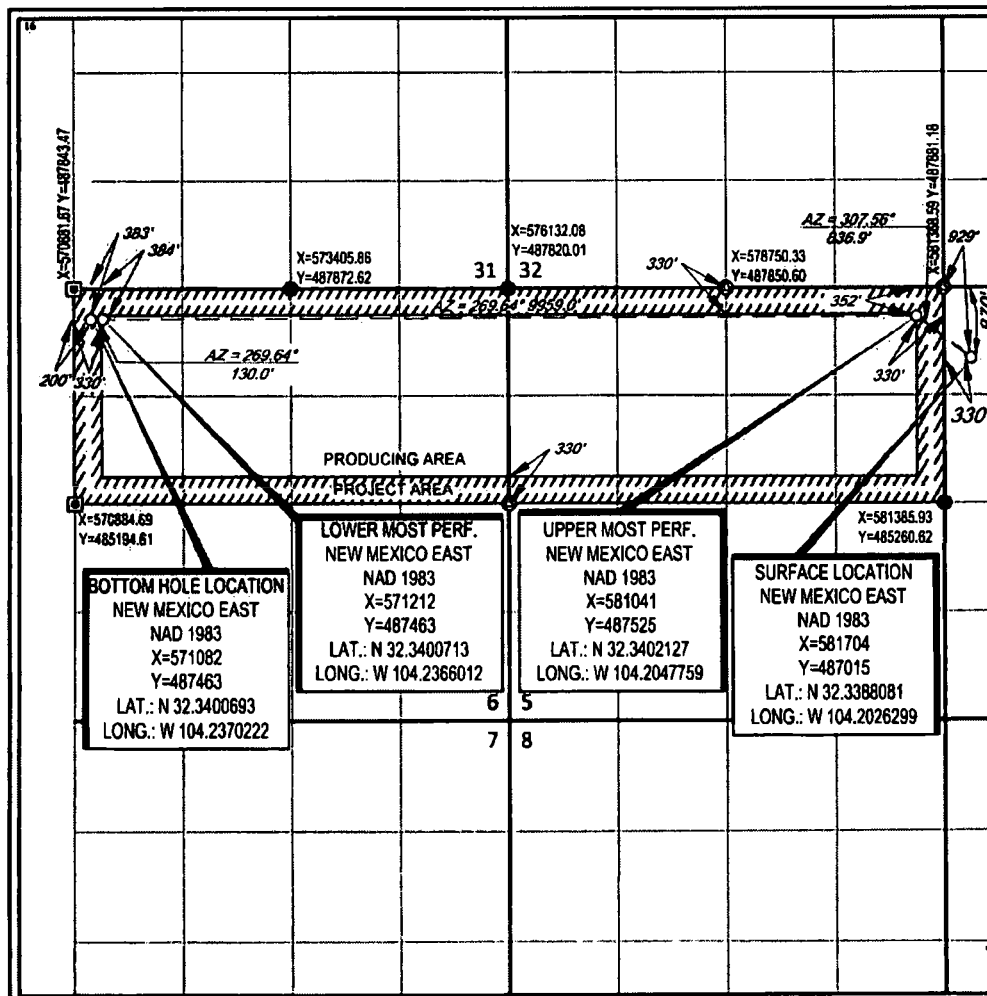
| UL or lot no. | Section | Township | Range | Lot Idn | Feet from the | North/South line | Feet from the | East/West line | County |
|---------------|----------|-------------|-------------|-----------|---------------|------------------|---------------|----------------|-------------|
| 4 | 4 | 23-S | 27-E | -4 | 870' | NORTH | 330' | WEST | EDDY |

¹¹Bottom Hole Location If Different From Surface

| UL or lot no. | Section | Township | Range | Lot Idn | Feet from the | North/South line | Feet from the | East/West line | County |
|---------------|----------|-------------|-------------|----------|---------------|------------------|---------------|----------------|-------------|
| 4 | 6 | 23-S | 27-E | 7 | 383' | NORTH | 200' | WEST | EDDY |

| | | | |
|--|--|----------------------------------|-------------------------|
| ¹² Dedicated Acres 635.88 | ¹³ Joint or Infill 638.54 | ¹⁴ Consolidation Code | ¹⁵ Order No. |
|--|--|----------------------------------|-------------------------|

No allowable will be assigned to this completion until all interests have been consolidated or a non-standard unit has been approved by the division.



¹⁷OPERATOR CERTIFICATION

I hereby certify that the information contained herein is true and complete to the best of my knowledge and belief, and that this organization either owns a working interest or released mineral interest in the land including the proposed bottom hole location or has a right to drill this well at this location pursuant to a contract with an owner of such a mineral or working interest, or to a secondary pooling agreement or a compulsory pooling order heretofore entered by the division.

Rachelle Reese
Signature Date: **6/1/18**

Rachelle Reese
Printed Name

rreese@taprk.com
E-mail Address

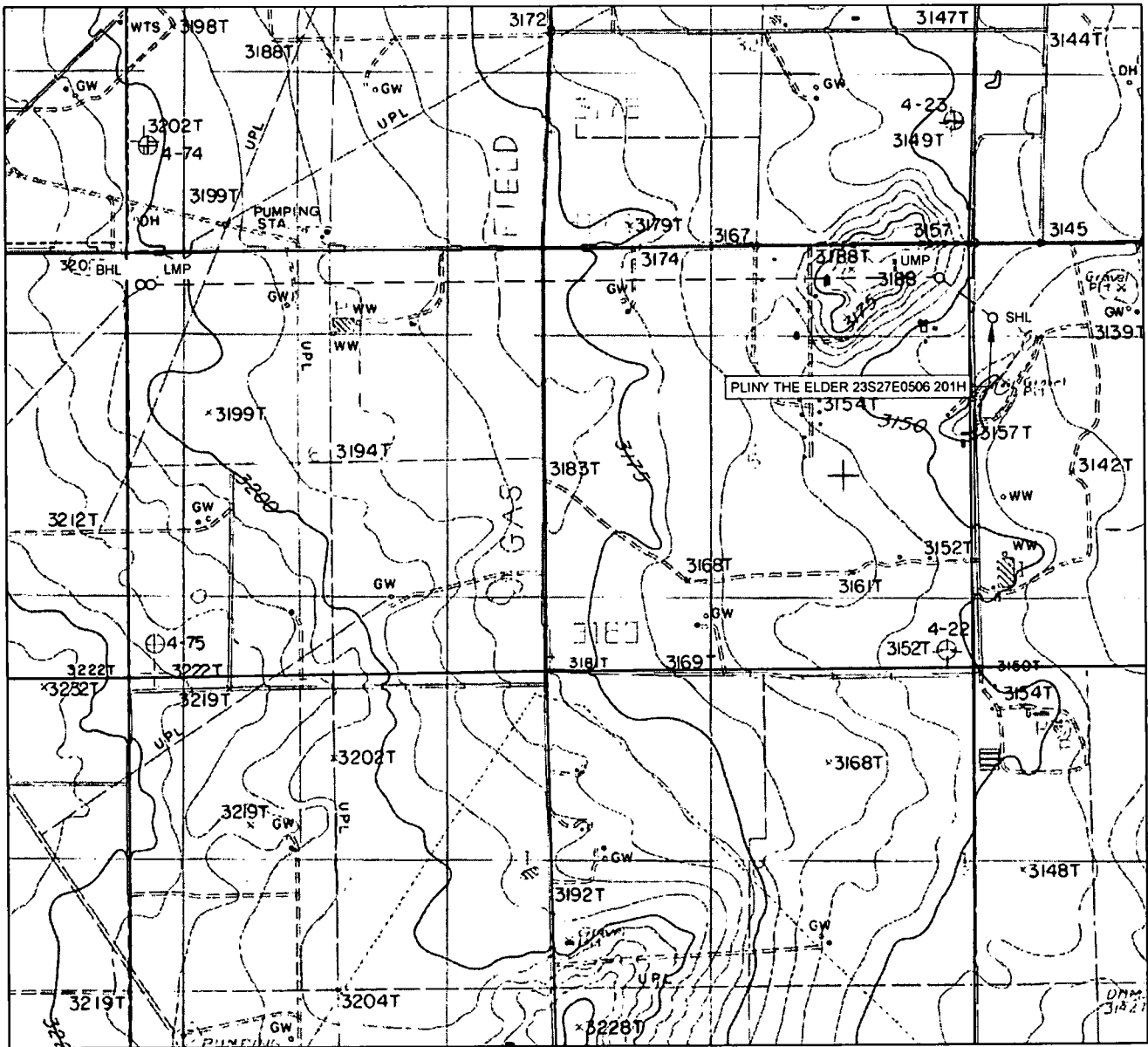
¹⁸SURVEYOR CERTIFICATION

I hereby certify that the well location shown on this plat was plotted from field notes of actual surveys made by me or under my supervision, and that the same is true to the best of my belief.

05/07/2018
Date of Survey
Signature and Seal of Professional Surveyor

NEW MEXICO
19642
PROFESSIONAL SURVEYOR
Stan W. Lloyd
Certificate Number

LOCATION & ELEVATION VERIFICATION MAP



LEASE NAME & WELL NO.: PLINY THE ELDER 23S27E0506 201H

SECTION 4 TWP 23-S RGE 27-E SURVEY N.M.P.M.
 COUNTY EDDY STATE NM ELEVATION 3150'
 DESCRIPTION 870' FNL & 330' FWL

LATITUDE N 32.3388081 LONGITUDE W 104.2026299



SCALE: 1" = 2000'
 0' 1000' 2000'



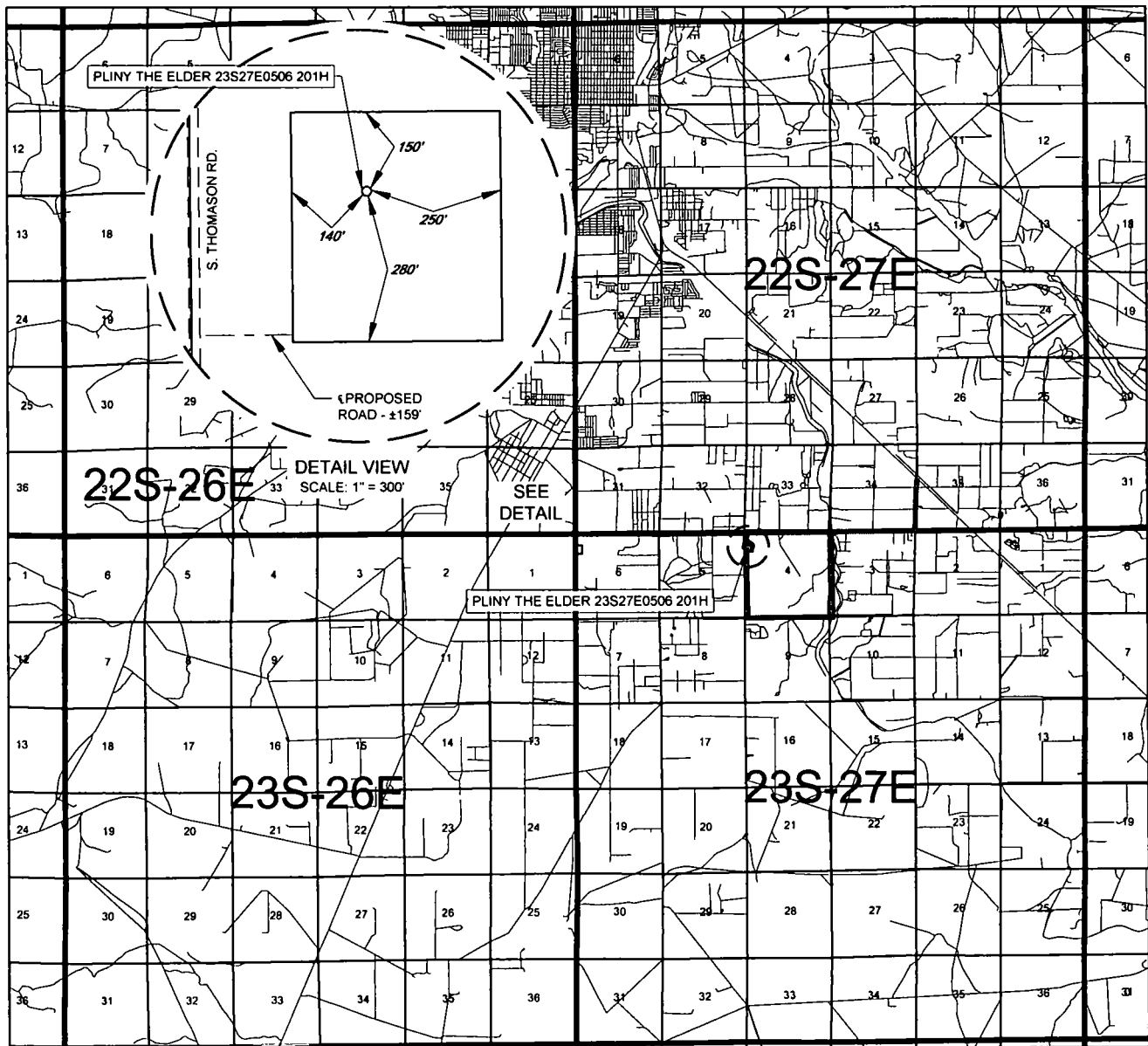
TOPOGRAPHIC
 LOYALTY INNOVATION LEGACY

1400 EVERMAN PARKWAY, Ste. 146 • FT. WORTH, TEXAS 76140
 TELEPHONE: (817) 744-7512 • FAX (817) 744-7554
 2803 NORTH BIG SPRING • MIDLAND, TEXAS 79705
 TELEPHONE: (432) 682-1653 OR (800) 767-1653 • FAX (432) 682-1743
 WWW.TOPOGRAPHIC.COM

THIS EASEMENT/SERVITUDE LOCATION SHOWN HEREON HAS BEEN SURVEYED ON THE GROUND UNDER MY SUPERVISION AND PREPARED ACCORDING TO THE EVIDENCE FOUND AT THE TIME OF SURVEY, AND DATA PROVIDED BY TAP ROCK OPERATING, LLC. THIS CERTIFICATION IS MADE AND LIMITED TO THOSE PERSONS OR ENTITIES SHOWN ON THE FACE OF THIS PLAT AND IS NON-TRANSFERABLE. THIS SURVEY IS CERTIFIED FOR THIS TRANSACTION ONLY.

ALL BEARINGS, DISTANCES, AND COORDINATE VALUES CONTAINED HEREON ARE GRID BASED UPON THE NEW MEXICO COORDINATE SYSTEM OF 1983, EAST ZONE, U.S. SURVEY FEET.

EXHIBIT 2 VICINITY MAP



LEASE NAME & WELL NO.: PLINY THE ELDER 23S27E0506 201H

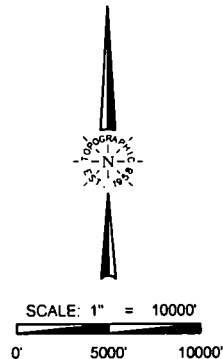
SECTION 4 TWP 23-S RGE 27-E SURVEY N.M.P.M.
 COUNTY EDDY STATE NM
 DESCRIPTION 870' FNL & 330' FWL

DISTANCE & DIRECTION

FROM INT. OF GRANDI RD. & US-285, GO SOUTH ON GRANDI RD. ±0.6 MILES,
THENCE WEST (RIGHT) ON E DERRICK RD. ±2.0 MILES, THENCE SOUTH
(LEFT) ON S. THOMASON RD. ±1142 FEET, THENCE EAST (LEFT) ±159 FEET TO
A POINT ±300 FEET SOUTHWEST OF THE LOCATION.

THIS EASEMENT/SERVITUDE LOCATION SHOWN HEREON HAS BEEN SURVEYED ON THE GROUND UNDER MY SUPERVISION AND PREPARED ACCORDING TO THE EVIDENCE FOUND AT THE TIME OF SURVEY, AND DATA PROVIDED BY TAP ROCK OPERATING, LLC. THIS CERTIFICATION IS MADE AND LIMITED TO THOSE PERSONS OR ENTITIES SHOWN ON THE FACE OF THIS PLAT AND IS NON-TRANSFERABLE. THIS SURVEY IS CERTIFIED FOR THIS TRANSACTION ONLY.

ALL BEARINGS, DISTANCES, AND COORDINATE VALUES CONTAINED HEREON ARE GRID BASED UPON THE NEW MEXICO COORDINATE SYSTEM OF 1983, EAST ZONE, U.S. SURVEY FEET.



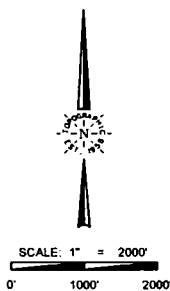
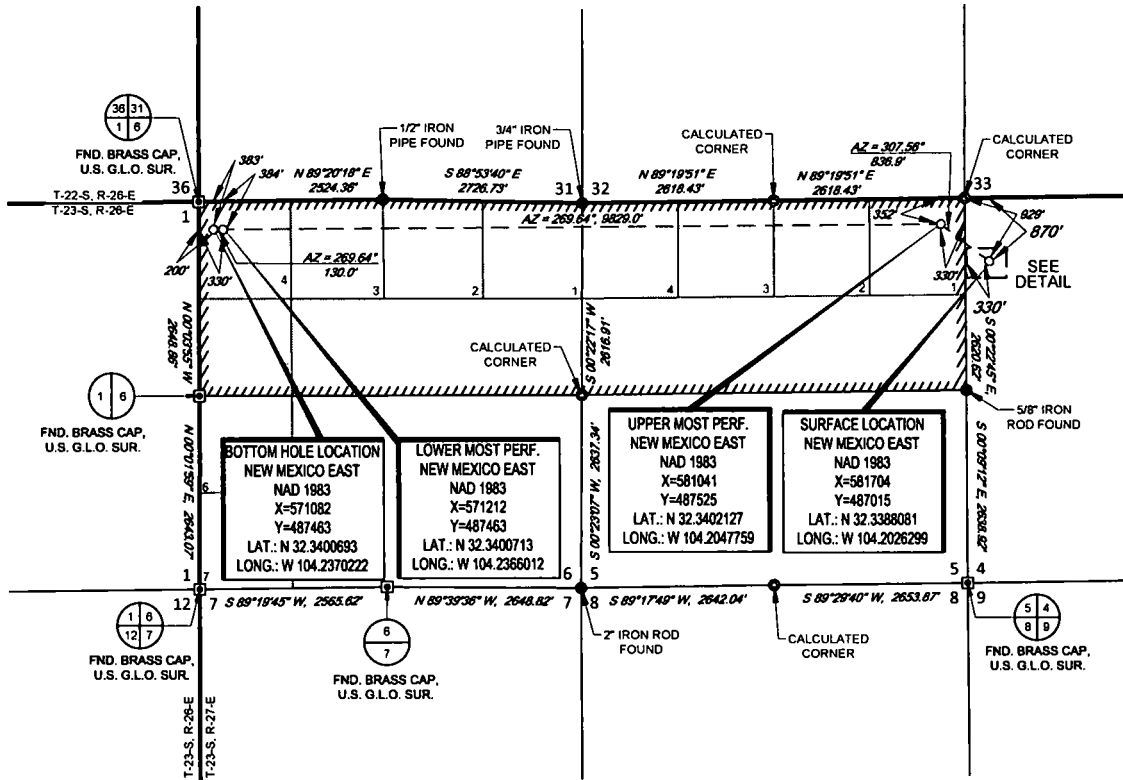
TOPOGRAPHIC
 LOYALTY INNOVATION LEGACY

1400 EVERMAN PARKWAY, Ste. 146 • FT. WORTH, TEXAS 76140
 TELEPHONE: (817) 744-7512 • FAX (817) 744-7554
 2803 NORTH BIG SPRING • MIDLAND, TEXAS 79705
 TELEPHONE: (432) 682-1653 OR (800) 767-1653 • FAX (432) 682-1743
 WWW.TOPOGRAPHIC.COM

TAP ROCK

EXHIBIT 2A

SECTION 4, TOWNSHIP 23-S, RANGE 27-E, N.M.P.M.
EDDY COUNTY, NEW MEXICO



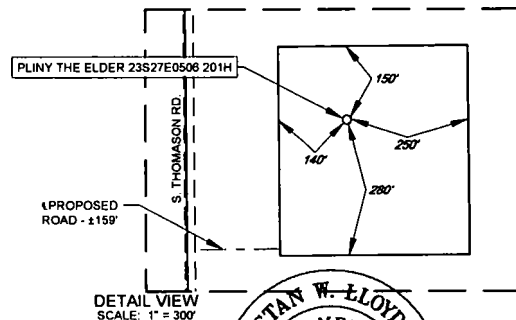
LEASE NAME & WELL NO.: PLINY THE ELDER 23S27E0506 201H

SECTION 4 TWP 23-S RGE 27-E SURVEY N.M.P.M.
COUNTY EDDY STATE NM
DESCRIPTION 870' FNL & 330' FWL

DISTANCE & DIRECTION
FROM INT. OF GRANDI RD. & US-285, GO SOUTH ON GRANDI RD. ± 0.6 MILES,
THENCE WEST (RIGHT) ON E DERRICK RD. ± 2.0 MILES, THENCE SOUTH (LEFT)
ON S. THOMASON RD. ± 1142 FEET, THENCE EAST (LEFT) ± 159 FEET TO A
POINT ± 300 FEET SOUTHWEST OF THE LOCATION.

ALL BEARINGS, DISTANCES, AND COORDINATE VALUES CONTAINED HEREON ARE GRID
BASED UPON THE NEW MEXICO COORDINATE SYSTEM OF 1983, EAST ZONE, U.S. SURVEY
FEET.

THIS EASEMENT/SERVITUDE LOCATION SHOWN HEREON HAS BEEN SURVEYED ON THE GROUND
UNDER MY SUPERVISION AND PREPARED ACCORDING TO THE EVIDENCE FOUND AT THE TIME OF
SURVEY, AND DATA PROVIDED BY TAP ROCK OPERATING, LLC THIS CERTIFICATION IS MADE AND
LIMITED TO THOSE PERSONS OR ENTITIES SHOWN ON THE FACE OF THIS PLAT AND IS
NON-TRANSFERABLE. THIS SURVEY IS CERTIFIED FOR THIS TRANSACTION ONLY.



Stan W. Lloyd, P.S. No. 19642
MAY 15, 2018

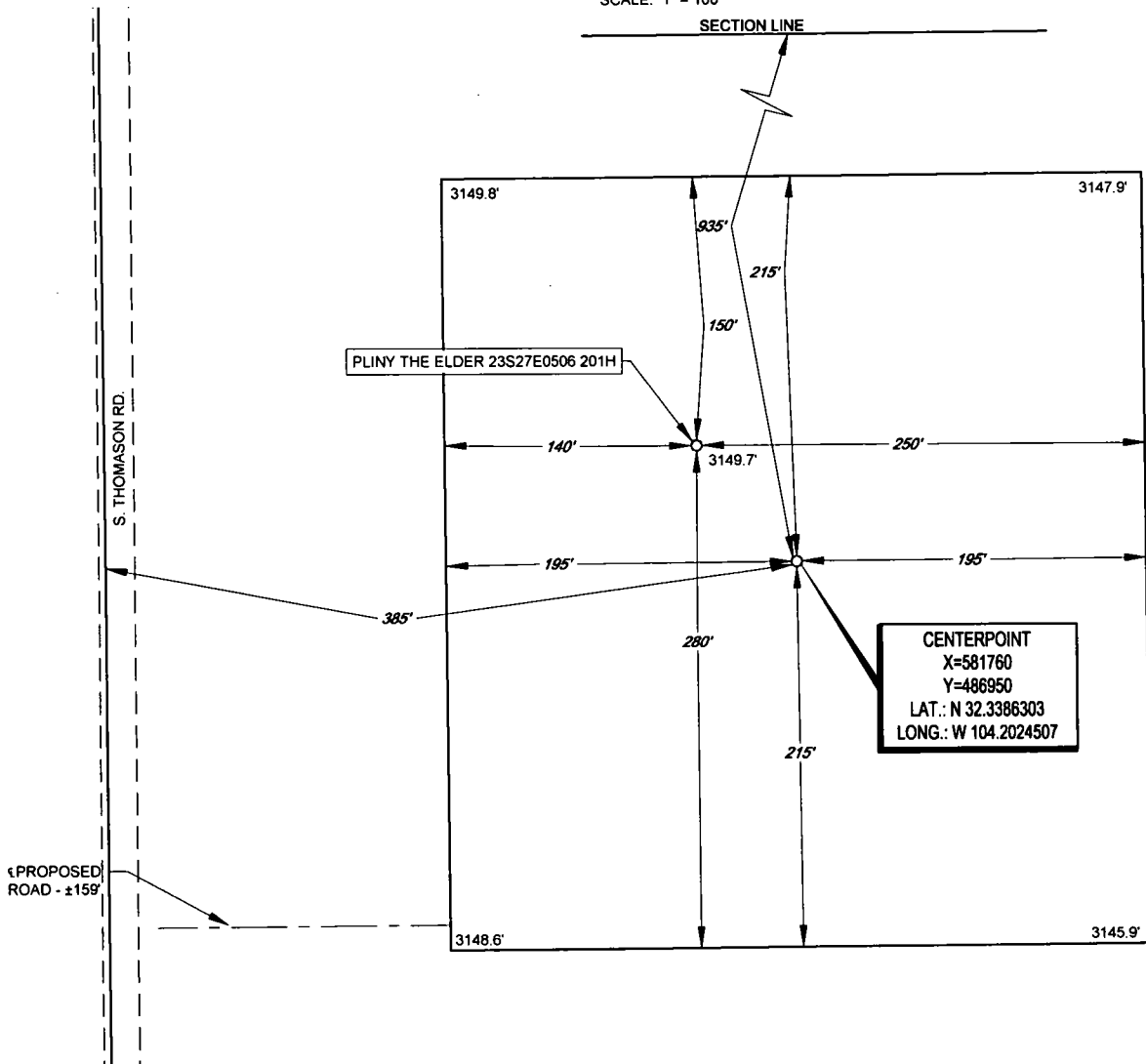
TOPOGRAPHIC
LOYALTY INNOVATION LEGACY
1400 EVERMAN PARKWAY, Ste. 140 • FT. WORTH, TEXAS 76140
TELEPHONE: (817) 744-7512 • FAX (817) 744-7554
2903 NORTH BIG SPRING • MIDLAND, TEXAS 79705
TELEPHONE: (432) 682-1853 OR (800) 767-1853 • FAX (432) 682-1743
WWW.TOPOGRAPHIC.COM

EXHIBIT 2B



SECTION 4, TOWNSHIP 23-S, RANGE 27-E, N.M.P.M.
EDDY COUNTY, NEW MEXICO

DETAIL VIEW
SCALE: 1" = 100'



LEASE NAME & WELL NO.: PLINY THE ELDER 23S27E0506 201H
201H LATITUDE N 32.3388081 201H LONGITUDE W 104.2026299

CENTERLINE POINT IS 935' FNL & 385' FWL



SCALE: 1" = 100'
0' 50' 100'

ALL BEARINGS, DISTANCES, AND COORDINATE VALUES CONTAINED HEREON ARE GRID
BASED UPON THE NEW MEXICO COORDINATE SYSTEM OF 1983, EAST ZONE, U.S. SURVEY
FEET.

THIS PROPOSED PAD SITE LOCATION SHOWN HEREON HAS BEEN SURVEYED ON THE GROUND UNDER
MY SUPERVISION AND PREPARED ACCORDING TO THE EVIDENCE FOUND AT THE TIME OF SURVEY,
AND DATA PROVIDED BY TAP ROCK OPERATING, L.L.C. THIS CERTIFICATION IS MADE AND LIMITED TO
THOSE PERSONS OR ENTITIES SHOWN ON THE FACE OF THIS PLAT AND IS NON-TRANSFERABLE. THIS
SURVEY IS CERTIFIED FOR THIS TRANSACTION ONLY.



TOPOGRAPHIC
LOYALTY INNOVATION LEGACY

1400 EVERMAN PARKWAY, Ste. 146 • FT. WORTH, TEXAS 76140
TELEPHONE: (817) 744-7512 • FAX (817) 744-7554
2903 NORTH BIG SPRING • MIDLAND, TEXAS 79705
TELEPHONE: (432) 682-1653 OR (800) 767-1653 • FAX (432) 682-1743
WWW.TOPOGRAPHIC.COM