

UNITED STATES
DEPARTMENT OF THE INTERIOR
BUREAU OF LAND MANAGEMENT

OCD Artesia

FORM APPROVED
OMB NO. 1004-0137
Expires: January 31, 2018**SUNDRY NOTICES AND REPORTS ON WELLS**
*Do not use this form for proposals to drill or to re-enter an abandoned well. Use form 3160-3 (APD) for such proposals.*5. Lease Serial No.
NMNM101110

6. If Indian, Allottee or Tribe Name

7. If Unit or CA/Agreement, Name and/or No.

SUBMIT IN TRIPLICATE - Other instructions on page 28. Well Name and No.
RDX FEDERAL COM 17 044H9. API Well No.
30-015-4440910. Field and Pool or Exploratory Area
PURPLE SAGE; WOLFCAMP (GAS)11. County or Parish, State
EDDY COUNTY, NM1. Type of Well
☐ Oil Well ☒ Gas Well ☐ Other2. Name of Operator
RKI EXPLORATION & PRODUCTION
Contact: CAITLIN O'HAIR
E-Mail: caitlin.ohair@wpenergy.com3a. Address
3500 ONE WILLIAMS CENTER MD 35
TULSA, OK 741723b. Phone No. (include area code)
Ph: 539-573-35274. Location of Well (Footage, Sec., T., R., M., or Survey Description)
Sec 17 T26S R30E 75FNL 2460FWL**12. CHECK THE APPROPRIATE BOX(ES) TO INDICATE NATURE OF NOTICE, REPORT, OR OTHER DATA**

TYPE OF SUBMISSION	TYPE OF ACTION			
<input checked="" type="checkbox"/> Notice of Intent	<input type="checkbox"/> Acidize	<input type="checkbox"/> Deepen	<input type="checkbox"/> Production (Start/Resume)	<input type="checkbox"/> Water Shut-Off
<input type="checkbox"/> Subsequent Report	<input type="checkbox"/> Alter Casing	<input type="checkbox"/> Hydraulic Fracturing	<input type="checkbox"/> Reclamation	<input type="checkbox"/> Well Integrity
<input type="checkbox"/> Final Abandonment Notice	<input type="checkbox"/> Casing Repair	<input type="checkbox"/> New Construction	<input type="checkbox"/> Recomplete	<input type="checkbox"/> Other
	<input type="checkbox"/> Change Plans	<input type="checkbox"/> Plug and Abandon	<input type="checkbox"/> Temporarily Abandon	
	<input type="checkbox"/> Convert to Injection	<input type="checkbox"/> Plug Back	<input checked="" type="checkbox"/> Water Disposal	

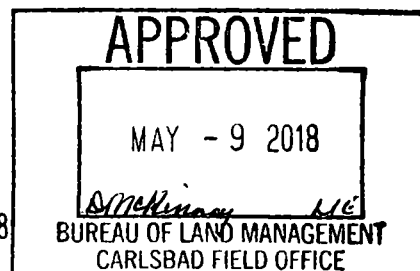
13. Describe Proposed or Completed Operation: Clearly state all pertinent details, including estimated starting date of any proposed work and approximate duration thereof. If the proposal is to deepen directionally or recomple horizontally, give subsurface locations and measured and true vertical depths of all pertinent markers and zones. Attach the Bond under which the work will be performed or provide the Bond No. on file with BLM/BIA. Required subsequent reports must be filed within 30 days following completion of the involved operations. If the operation results in a multiple completion or recomple in a new interval, a Form 3160-4 must be filed once testing has been completed. Final Abandonment Notices must be filed only after all requirements, including reclamation, have been completed and the operator has determined that the site is ready for final inspection.

RKI EXPLORATION AND PRODUCTION, LLC PROPOSES TO DISPOSE WATER TO THE FOLLOWING FACILITIES LOCATED IN LOVING, TX:

DAMSITE UNIT #1, API 42-301-30047, UIC 000102256 ✓
STATELINE SWD 2 #1, API 42-301-31961, UIC 000107340 ✓
STATELINE SWD 2 #2, API 42-301-31958, UIC 000107045 ✓
STATELINE SWD 2 #3, API 42-301-31959, UIC 000107341 ✓
STATELINE SWD 2 #4, API 42-301-31960, UIC 000107342 ✓
RED BLUFF 8 #1, API 42-301-30294, UIC 000100957 ✓
RED BLUFF 8 #2D, API 42-301-30333, UIC 000101482 ✓
RED BLUFF DEEP #1D, API 42-301-30225, UIC 000102257 ✓

RECEIVED

MAY 31 2018



Accepted for record 6-4-18 NMOC

DISTRICT II-ARTESIA O.C.D.

14. I hereby certify that the foregoing is true and correct.

Electronic Submission #412791 verified by the BLM Well Information System
For RKI EXPLORATION & PRODUCTION, sent to the Carlsbad
Committed to AFMSS for processing by DEBORAH MCKINNEY on 05/01/2018 ()

Name (Printed/Typed) CAITLIN O'HAIR

Title SUBMITTER

Signature (Electronic Submission)

Date 04/30/2018

THIS SPACE FOR FEDERAL OR STATE OFFICE USE

Approved By

Title

Date

Conditions of approval, if any, are attached. Approval of this notice does not warrant or certify that the applicant holds legal or equitable title to those rights in the subject lease which would entitle the applicant to conduct operations thereon.

Office

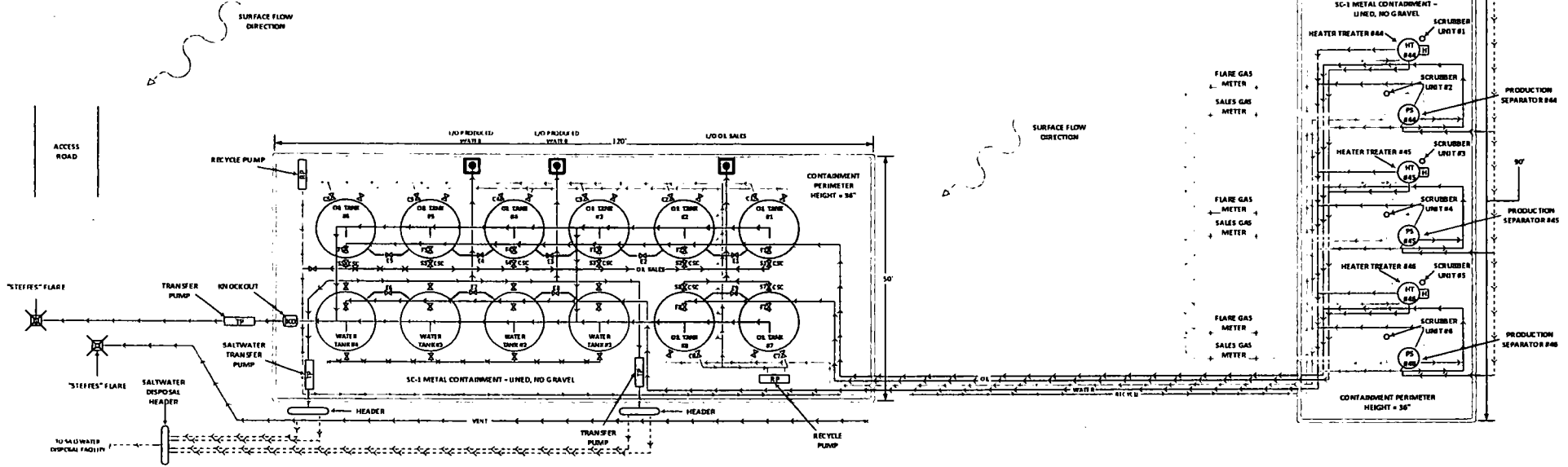
Title 18 U.S.C. Section 1001 and Title 43 U.S.C. Section 1212, make it a crime for any person knowingly and willfully to make to any department or agency of the United States any false, fictitious or fraudulent statements or representations as to any matter within its jurisdiction.

(Instructions on page 2)

**** OPERATOR-SUBMITTED ** OPERATOR-SUBMITTED ** OPERATOR-SUBMITTED ****



RDX 17-46H WELLHEAD
RDX 17-45H WELLHEAD
RDX 17-44H WELLHEAD



Equipment: Volume & Dimensions

- Oil Tank #1: 500 Bbl oil, 12.0' diameter
- Oil Tank #2: 500 Bbl oil, 12.0' diameter
- Oil Tank #3: 500 Bbl oil, 12.0' diameter
- Oil Tank #4: 500 Bbl oil, 12.0' diameter
- Oil Tank #5: 500 Bbl oil, 12.0' diameter
- Oil Tank #6: 500 Bbl oil, 12.0' diameter
- Oil Tank #7: 500 Bbl oil, 12.0' diameter
- Oil Tank #8: 500 Bbl oil, 12.0' diameter
- Water Tank #1: 500 Bbl produced water, 12.0' diameter
- Water Tank #2: 500 Bbl produced water, 12.0' diameter
- Water Tank #3: 500 Bbl produced water, 12.0' diameter
- Water Tank #4: 500 Bbl produced water, 12.0' diameter
- Heater Treater #44: 100.72 Bbl 6.0' diameter
- Heater Treater #45: 100.72 Bbl 6.0' diameter
- Heater Treater #46: 100.72 Bbl 6.0' diameter
- Prod action Separator #44: 179.10 Bbl 8.0' diameter
- Prod action Separator #45: 179.10 Bbl 8.0' diameter
- Prod action Separator #46: 179.10 Bbl 8.0' diameter
- Scrubber Unit #1: 0.42 Bbl 1.0' diameter
- Scrubber Unit #2: 0.42 Bbl 1.0' diameter
- Scrubber Unit #3: 0.42 Bbl 1.0' diameter
- Scrubber Unit #4: 0.42 Bbl 1.0' diameter
- Scrubber Unit #5: 0.42 Bbl 1.0' diameter
- Scrubber Unit #6: 0.42 Bbl 1.0' diameter

Production Phase: Sales valves S1 through S8 sealed closed. Fill valve to tank that is in production will be open. Equalizer valve to tank that is in production will be open. Circulating valves will be open as necessary, then released.

Sales Phase: The tank from which sales are being made will be isolated by sealing closed the fill valve, circulating valve, and the equalizer valve during sales and opening the sales valve. Upon completion of the sale the sales valve will be released. Sales by truck will be by tank gauge.

Valve	Production Phase	Sales Phase	Circulating	F1	Flow	Flow	Flow	Flow
S1	Closed	Open	Closed	F1	Closed or Open	Closed	Closed or Open	Closed or Open
S2	Closed	Open	Closed	F2	Closed or Open	Closed	Closed or Open	Closed or Open
S3	Closed	Open	Closed	F3	Closed or Open	Closed	Closed or Open	Closed or Open
S4	Closed	Open	Closed	F4	Closed or Open	Closed	Closed or Open	Closed or Open
S5	Closed	Open	Closed	F5	Closed or Open	Closed	Closed or Open	Closed or Open
S6	Closed	Open	Closed	F6	Closed or Open	Closed	Closed or Open	Closed or Open
S7	Closed	Open	Closed	F7	Closed or Open	Closed	Closed or Open	Closed or Open
S8	Closed	Open	Closed	F8	Closed or Open	Closed	Closed or Open	Closed or Open
S9	Closed or Open	Closed	Closed	C1	Closed or Open	Closed	Closed	Closed
S10	Closed or Open	Closed	Closed	C2	Closed or Open	Closed	Closed	Closed
S11	Closed or Open	Closed	Closed	C3	Closed or Open	Closed	Closed	Closed
S12	Closed or Open	Closed	Closed	C4	Closed or Open	Closed	Closed	Closed
S13	Closed or Open	Closed	Closed	C5	Closed or Open	Closed	Closed	Closed
S14	Closed or Open	Closed	Closed	C6	Closed or Open	Closed	Closed	Closed
S15	Closed or Open	Closed	Closed	C7	Closed or Open	Closed	Closed	Closed
S16	Closed or Open	Closed	Closed	C8	Closed or Open	Closed	Closed	Closed
S17	Closed or Open	Closed	Closed	C9	Closed or Open	Closed	Closed	Closed
S18	Closed or Open	Closed	Closed	C10	Closed or Open	Closed	Closed	Closed

NOTE: Some measurements on drawing are estimates and not field verified.

FACILITY SITE DIAGRAM
RKI Exploration & Production, LLC - Permian Basin
RDX 17-44H (45, 46)
Latitude: 32.048586° Longitude: -103.906195°
UNIT D, SEC. 17, T26S, R30E
API: 30-015-44409
EDDY COUNTY, NM

DRAWN BY: Kevin Fox
DATE: 1.17.2018

LEGEND

- ABOVE-GRADE EQUIPMENT
- BELOW-GRADE EQUIPMENT
- SECONDARY CONTAINMENT
- WELL HEAD
- HEATER
- OVERFILL ALARM
- FENCE
- OIL DUMP LINE
- WATER DUMP LINE
- FLOW LINE
- VENT LINE
- RECYCLE LINE
- ROLL LINE
- PRV LINE
- GAS LINE
- FUEL GAS LINE
- SKIMMER

THIS SITE IS SUBJECT TO THE SITE SECURITY PLAN FOR THE PERMIAN BASIN.

